



DE VALK
YACHT BROKERS



SALONA 42



DE VALK
YACHT BROKERS

SALONA 42

BROKER'S COMMENTS

If you can't decide whether you want a racing sailboat or a cruiser, the Salona 42 is a good starting point for your search. It's difficult not to like the new 42-footer from Salona. It's got sharp lines, good design, handles well and is a sprightly performer. This well maintained Salona 42 is ready to go!

Johan Schootstra

SPECIFICATIONS

Dimensions	12.80 x 3.79 x 2.25 (m)	Builder	Salona Yachts (AD Boats Ltd.)
Built	2007	Cabins	2
Material	GRP	Berths	5
Engine(s)	1 x Volvo Penta D2-40B diesel	Hp/Kw	40.00 (hp), 29.40 (kw)
Asking price	€ 129.000 (VAT Paid)	Lying	at sales office

CONTACT

Sales office	De Valk Hindeloopen B.V.	Telephone	+31 514 52 40 00
Address	Oosterstrand 1 8713 JS Hindeloopen NL	E-mail	hindeloopen@devalk.nl

DISCLAIMER

These particulars are given in good faith as supplied but cannot be guaranteed.



GENERAL

Model	SALONA 42
Type	sailing yacht
LOA (m)	12,80
LWL (m)	11,45
Beam (m)	3,79
Draft (m)	2,25
Headroom (m)	1,95
Year built	2007
Builder	Salona Yachts (AD Boats Ltd.)
Country	Croatia
Designer	J&J Design
Displacement (t)	7,35
Ballast (tonnes)	2,4
Gross tonnage	13
Net tonnage	4
CE norm	A
Hull material	GRP
Hull colour	white RAL 9010
Hull shape	round-bilged
Keel type	fin keel with bulb
Superstructure material	GRP
Deck material	GRP
Deck finish	non-skid moulded in
Superstructure deck finish	non-skid moulded in
Cockpit deck finish	non-skid moulded in with teak
Window frame	aluminium
Window material	perspex
Deckhatch	4x (Moonlight)
Fuel tank (litre)	polyethylene Approx 200 ltr.
Level indicator (fuel tank)	yes



Freshwater tank (litre)	polyethylene Approx 198 ltr.
Level indicator (freshwater)	yes
Blackwater tank (litre)	polyethylene
Level indicator (blackwater)	yes
Blackwater tank extraction	deck extraction + pump
Wheel steering	mechanical Steering Wheel type Jefa with leather
Outside helm position	yes
Emergency tiller	yes

ACCOMMODATION

Cabins	2
Berths	5
Interior	teak
Floor	teak and holly
Open cockpit	yes
Headroom saloon (m)	1.95 mtr.
Heating	diesel ducted hot air Webasto 3900 EVO new 2022
Navigation center	yes
Chart table	yes
Aft Cabin	1x
Galley	yes
Countertop	Duropol
Sink	stainless steel double
Cooker	calor gas Domatic 2 burner
Oven	In cooker
Fridge	Top loader Vitrefrigo new 2021 frontloader LC with freezer compartment new 2025
Hot water system	220V + engine
Water pressure system	electrical
Owners cabin	v-bed Botman/Neptune with flex bottom new 2019
Bed length (m)	2.10 mtr.



Wardrobe	shelves 2x
Guest cabin 1	double bed Botman/Neptune with flex bottom new 2019
Bed length (m)	2.10 mtr.
Wardrobe	hanging and shelves
Bathroom	shared
Toilet	Jabsco
Toilet system	manual
Wash basin	yes
Shower	Separate
Extra info	Storage compartment behind the Bathroom.

MACHINERY

No of engines	1
Make	Volvo Penta
Type	D2-40B
HP	40
kW	29.40
Fuel	diesel
Year installed	2007
Maximum speed (kn)	8
Cruising speed (kn)	7
Consumption (l/hr)	3
Engine hours	808
Engine cooling system	freshwater heat exchanger
Drive	shaft
Saildrive seal	2017
Engine controls	bowden cable
Gearbox	mechanical
Exhaust	watercooled
Propeller type	folding Volvo
Propeller blades	3



Manual bilge pump	2x
Electric bilge pump	2x front and rear
Generator	Fuel cell, SFC EFOY 2200 on Methanol needs to be check
Start battery	Varta 12V - 140 AH
Service battery	6x AMG 330Ah new 2023
Battery charger	WhisperPower WP-BC Supreme 12v - 40A
Inverter	Victron Inverter 12 - 350
Shorepower	with cable

NAVIGATION

Compass	Plastimo
Electric compass	Data from: 2x Raymarine ST60 Plus + Graphic
Multi control display	Raymarine i70s new 2023 Raymarine ST60 Tridata
Depth sounder	Data from: 2x Raymarine ST60 Plus + Graphic
Log	Data from: 2x Raymarine ST60 Plus + Graphic
Windset	Raymarine ST60+ Wind
VHF	B&G V60 new 2023
VHF handheld	B&G H60 (bluetooth connected)
Autopilot	2x Raymarine P70s new 2023
Rudder angle indicator	In autopilot
Radar	Raymarine Quantum Q24D 45cm doppler scanner new 2022
GPS	Data from: ST60 Plus Graphic
Radar/GPS/plotter	Raymarine Axiom+ 7"
Navtex	ICS NAV6 (MC Murdo)
AIS transceiver	Raymarine
Personal MOB transmitter	2x AccuSat MT410G
Extra info	Jonbuoy Recovery Module (Ocean Safety, 07-2018)

EQUIPMENT

Sprayhood with grab rail	yes
Window cover	yes



Cockpit cushions	yes
Cockpit table	yes
Boarding ladder	yes
Deck shower	yes
Anchor	Bruce
Anchor chain	yes
Anchor 2	Fortress
Anchor chain	yes
Windlass	electrical Quick High Performance
Sea railing	wire
Grab rail (superstructure)	stainless steel
Pushpit	yes
Pulpit	yes
Lifebuoy	Jonbuoy Recovery Module (Ocean Safety, 07-2018)
Radar reflector	Detector and active reflector (SeaMe)
Fenders	yes
Mooring lines	yes
Radio-cd player	Fusion MS-RA70
Cockpit speakers	2x
Speakers in salon	2x
Fire extinguisher	2x new 2025

RIGGING

Rigging	sloop
Standing rigging	Rod
Brand mast	Nordic
Material mast	carbon
Spreaders	2x
Keel stepped mast	yes
Mainsail	Hagoort Filmless 52.23 m² new 2020
Mainsail cover	HR zeilen



Battcars	yes
Fully battened mainsail	yes
Jib	Hagoort Filmless 36.76 m² new 2020
Genoa	Non overlap high aspect Hagoort Genua 3 High aspect Working Jib (UK De Vries) Genua 4
Code Zero	With own furling system (UK De Vries)
Gennaker	Top hoisted running Gennaker: Collor Red, with own snuffer (UK / de Vries) 7/8 reaching gennaker with own snuffer (UK De Vries)
Stormjib	yes
Reefing System	quick-one-line-reefing 2x reefs controlled from cockpit
Backstay adjuster	hydraulic Navtec. Backstay made of fiber line (PBO)
Boomvang	gasspring Southern Spars
Secondary sheet winch	2x 44 Harken 2 speed
Genoa sheetwinches	2x 53 Harken 2 speed
Halyard winches	1x 44 Harken 2 speed and Harken 900 unipower electric winches
Spi-pole	carbon
Isolated backstay	yes
Extra info	Optimized for short-handed sailing



SALONA 42



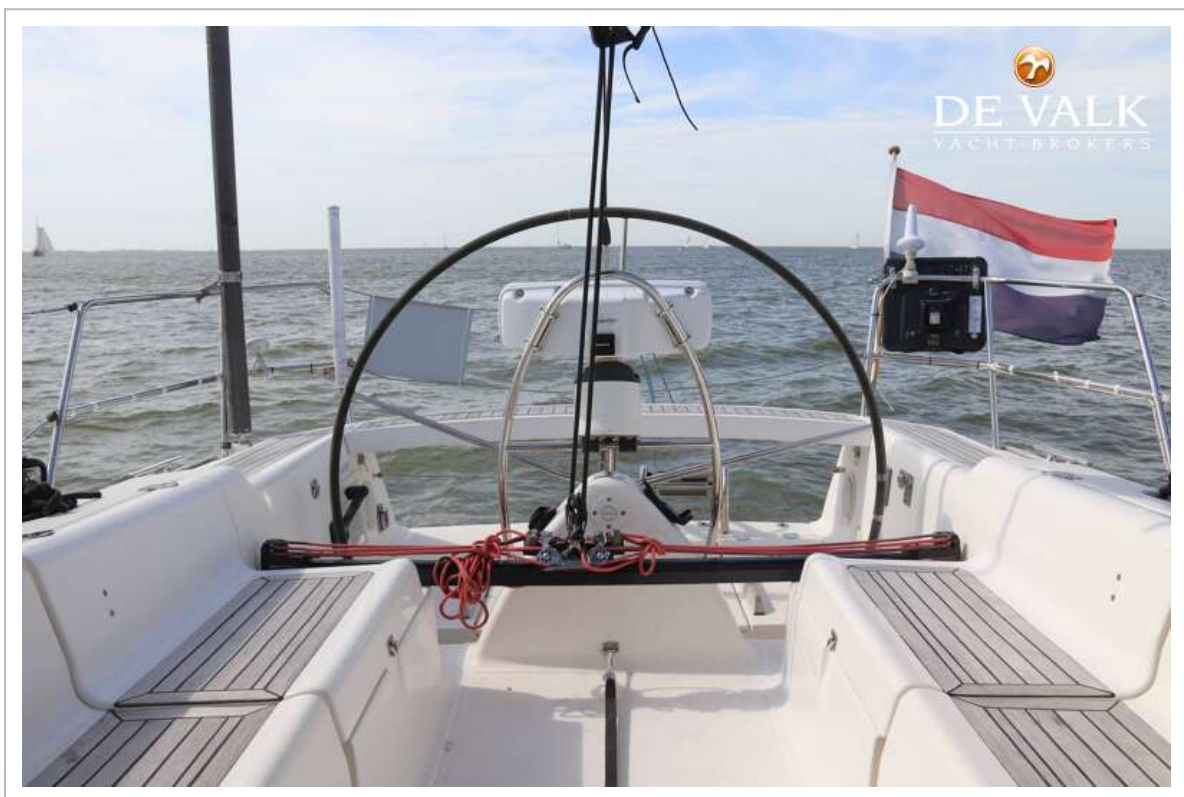
SALONA 42













SALONA 42



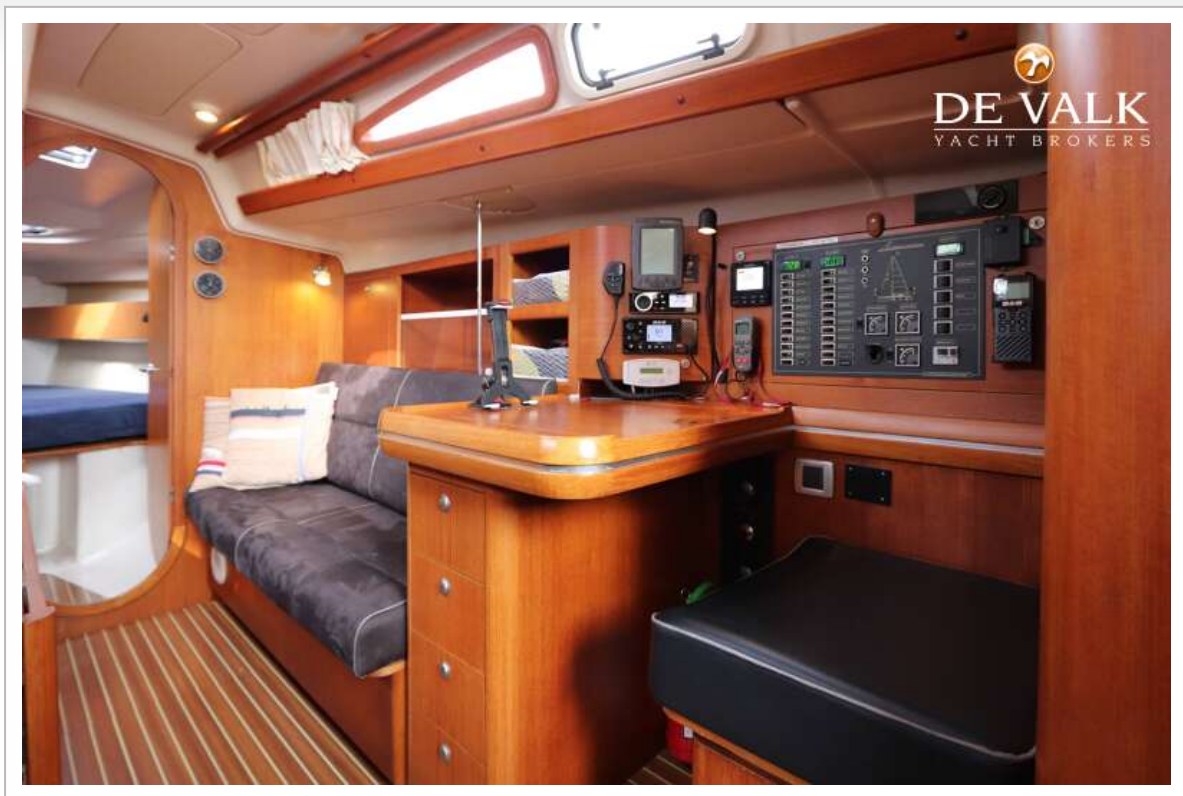




SALONA 42



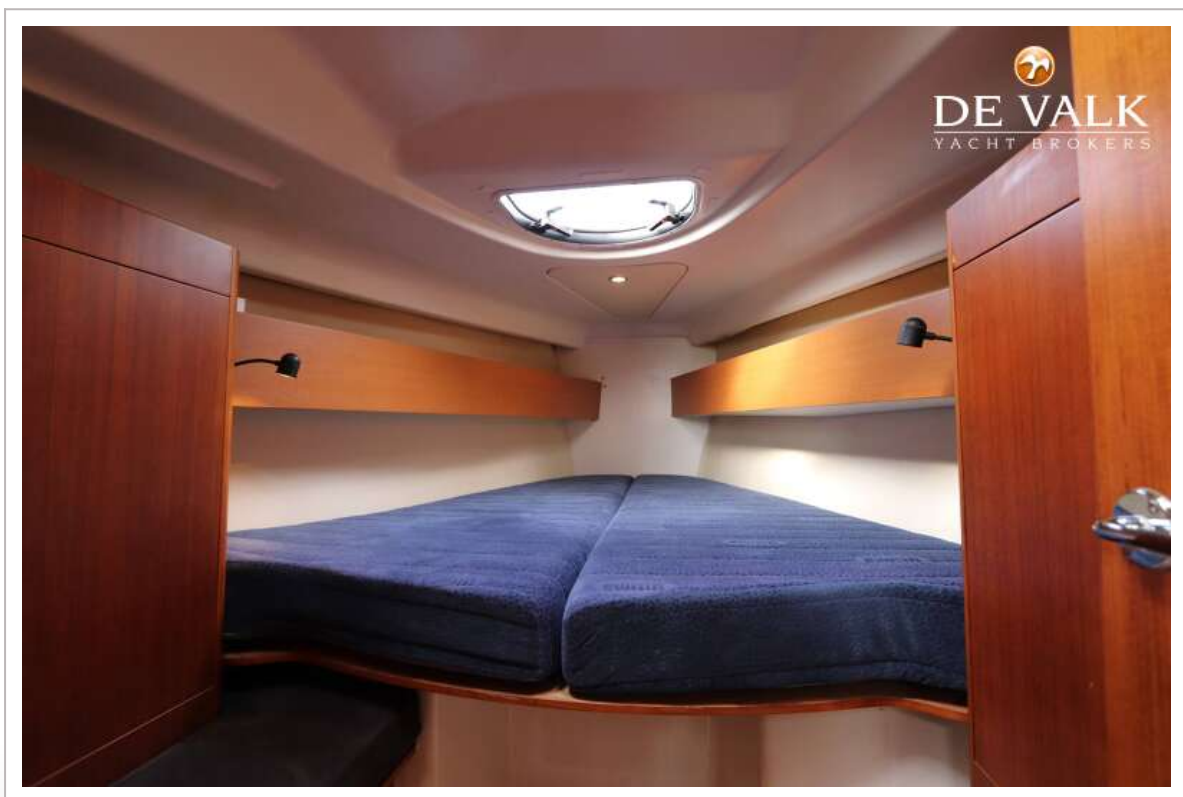
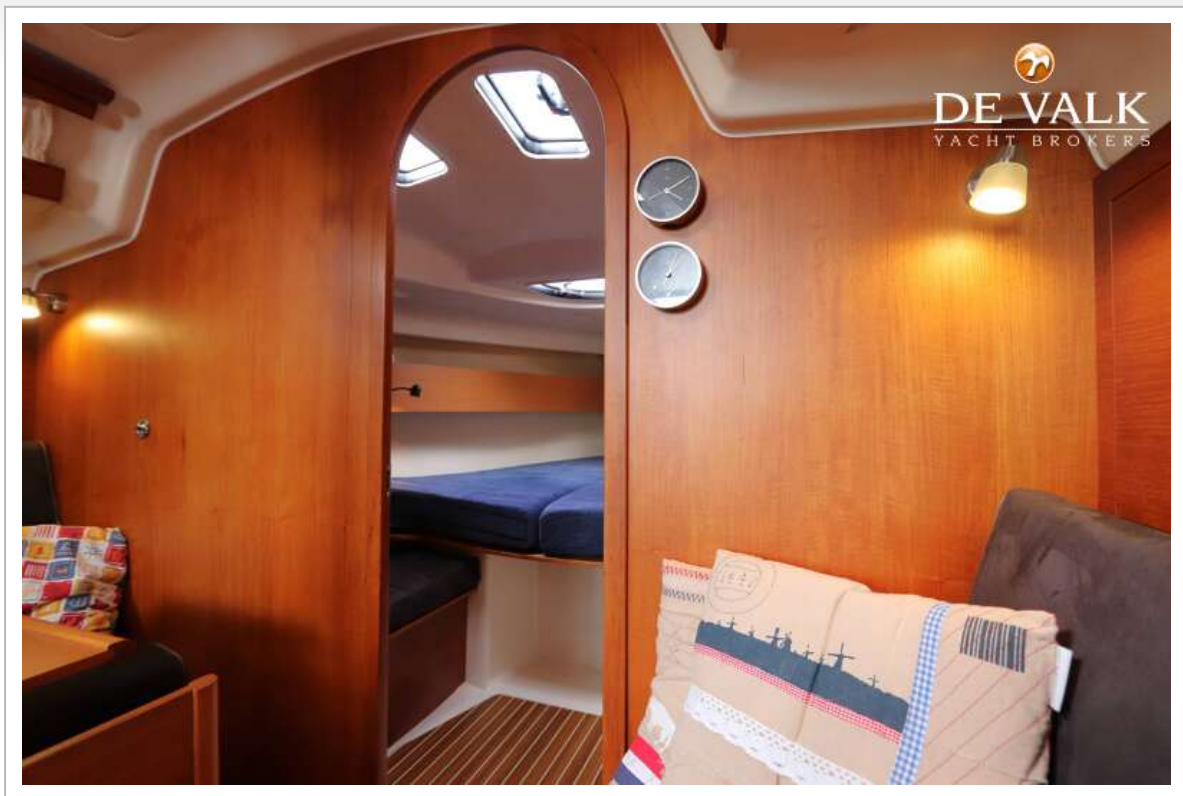
SALONA 42



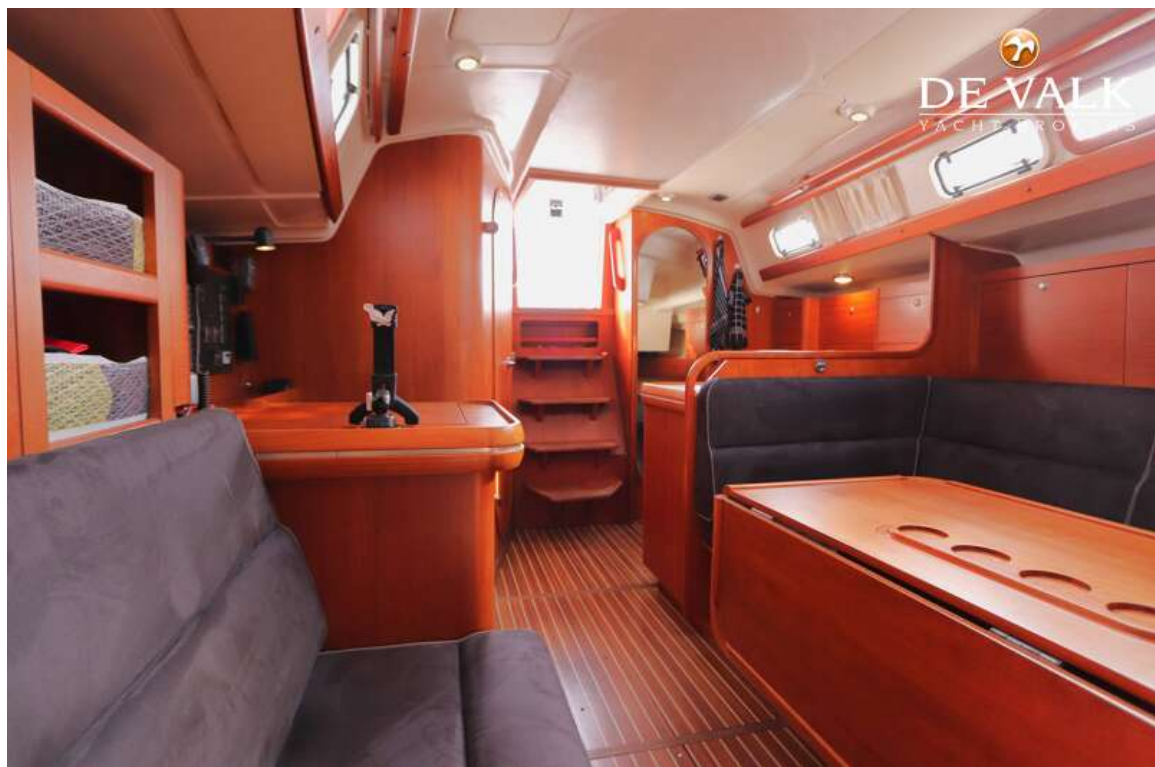
SALONA 42



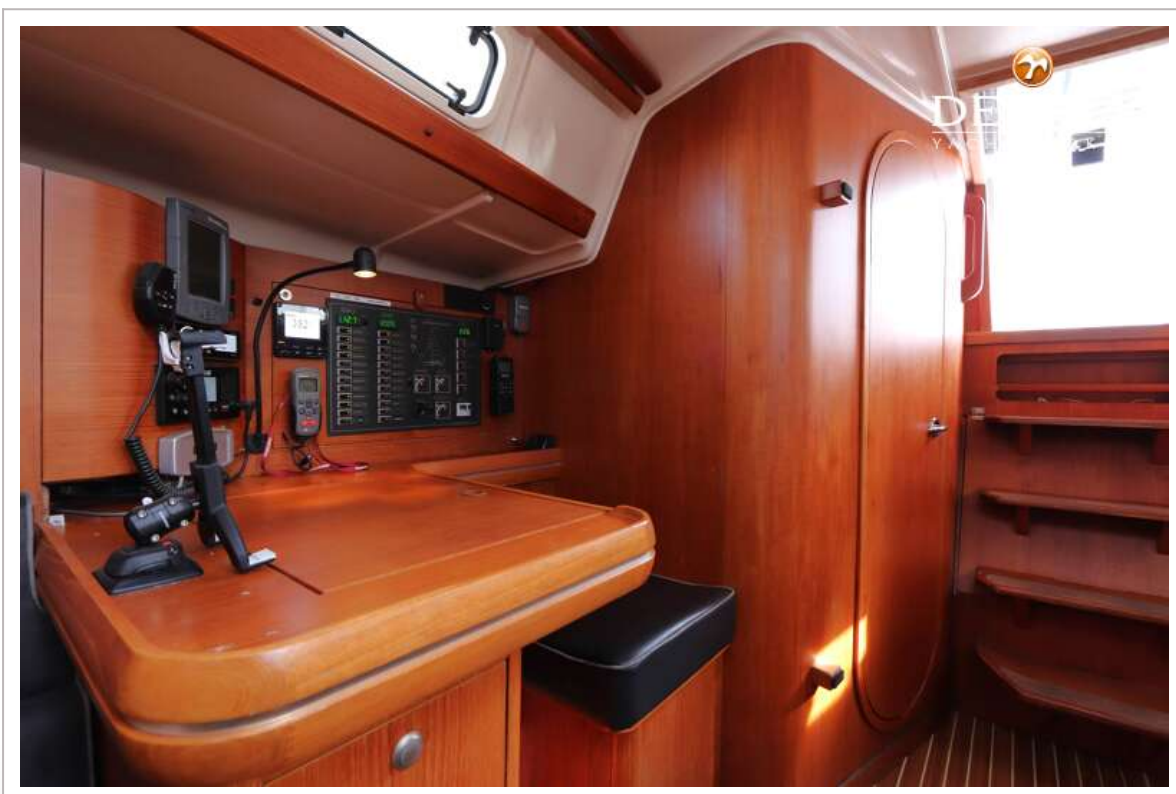
SALONA 42



SALONA 42



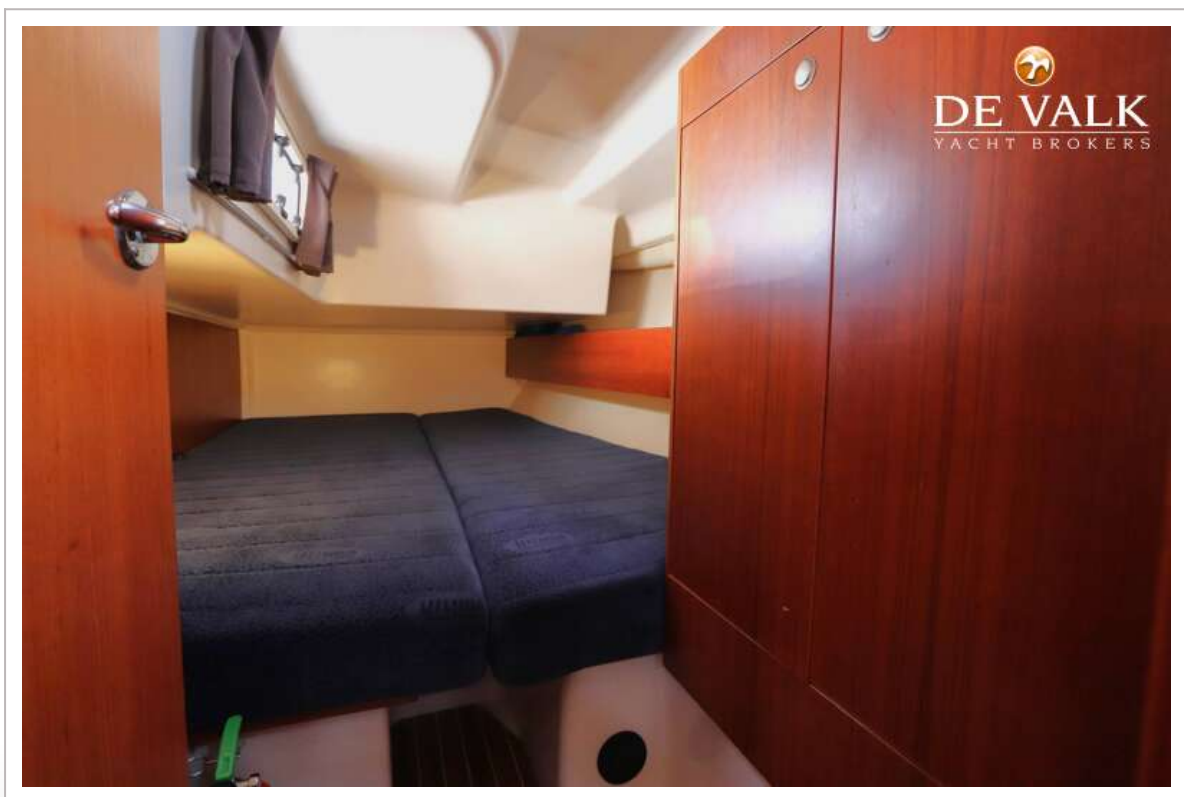
SALONA 42



SALONA 42



SALONA 42



SALONA 42

