



## HALLBERG RASSY 36

# HALLBERG RASSY 36

## BROKER'S COMMENTS

This Hallberg Rassy 36 is designed by German Frers and here excellent sailing capacities is very easy to manoeuvre. Below decks the accommodations are spacious and light. Over the years the current second owner invested a lot, you can find all the updates in the brochure. The biggest update is that she has a new sails and instruments (2016). She comes well equipped and maintained. Now ready to be admired and inspected 7 days in Hindeloopen.

*Johan Nooitgedagt*

## SPECIFICATIONS

<b>Dimensions</b>	10.87 x 3.55 x 1.70 (m)	<b>Builder</b>	Hallberg Rassy Varv AB
<b>Built</b>	1991	<b>Cabins</b>	2
<b>Material</b>	GRP	<b>Berths</b>	6
<b>Engine(s)</b>	1 x MD22 A Volvo Penta diesel	<b>Hp/Kw</b>	57.00 (hp), 41.90 (kw)
<b>Asking price</b>	sold (VAT )	<b>Lying</b>	contact Hindeloopen

## CONTACT

<b>Sales office</b>	De Valk Hindeloopen B.V.	<b>Telephone</b>	+31 514 52 40 00
<b>Address</b>	Oosterstrand 1 8713 JS Hindeloopen NL	<b>E-mail</b>	hindeloopen@devalk.nl

## DISCLAIMER

These particulars are given in good faith as supplied but cannot be guaranteed.



## GENERAL

Model	HALLBERG RASSY 36
Type	sailing yacht
LOA (m)	10,87
LWL (m)	8,72
Beam (m)	3,55
Draft (m)	1,70
Air draft (m)	16,00
Headroom (m)	1,90
Year built	1991
Builder	Hallberg Rassy Varv AB
Country	Sweden
Designer	German Frers
Displacement (t)	7,5
Ballast (tonnes)	cast iron and lead 3,4
CE norm	A
Hull material	GRP
Hull colour	white
Hull shape	round-bilged
Keel type	fin keel
Superstructure material	GRP
Rubbing strake	stainless steel
Deck material	GRP
Deck finish	teak
Superstructure deck finish	non-skid moulded in
Cockpit deck finish	teak
Antifouling (year)	2018
Dorades	yes
Window frame	aluminium
Window material	tempered glass
Deckhatch	yes



Fuel tank (litre)	stainless steel 330
Level indicator (fuel tank)	yes
Freshwater tank (litre)	stainless steel 350
Level indicator (freshwater)	yes
Blackwater tank (litre)	polyethylene 50
Wheel steering	mechanical
Emergency tiller	yes
More info on hull	2014 under water complete redone international Gelschield 200
More info on paintwork	2009 Complete hull repainted Awl grip

## ACCOMMODATION

Cabins	2
Berths	6
Interior	mahogany
Floor	teak and holly
Pilot house	yes
Headroom saloon (m)	1,90
Heating	Webasto HL32 D
Chart table	yes
Galley	yes
Countertop	corian
Sink	stainless steel
Cooker	Eno 3 burner
Oven	yes
Fridge	Frigo boat
Hot water system	220V + engine
Water pressure system	electrical
Manual and/or foot pump	yes
Crockery	yes
Owners cabin	double bed + single bed
Bed length (m)	2,0



Wardrobe	hanging and shelves
Bathroom	shared
Toilet	shared Jabsco
Toilet system	manual
Wash basin	at the toilet
Shower	separate
Guest cabin 1	v-bed
Bed length (m)	1,90
Wardrobe	hanging and shelves

## MACHINERY

No of engines	1
Make	MD22 A
Type	Volvo Penta
HP	57,00
kW	41,90
Fuel	diesel
Year installed	1991
Maximum speed (kn)	7
Cruising speed (kn)	6
Consumption (l/hr)	3
Engine hours	3955
Engine cooling system	freshwater heat exchanger
Drive	shaft
Engine controls	bowden cable
Gearbox	mechanical
Bowthruster	electric Max Power
Exhaust	watercooled
Propeller type	fixed Max power
Propeller blades	3
Propeller shaft material	stainless steel



Shaft lubrication	water
Manual bilge pump	yes
Electric bilge pump	yes
Start battery	1x Varta 68 Ah 2017
Service battery	2x Vetus 115 Ah 2015
Bowthruster battery	2x Exide Dual 50 Ah 2016
Battery charger	3x
Battery charger/inverter	yes
Diode battery combiners	yes
Shorepower	with cable

## NAVIGATION

Depth sounder	Raymarine I 50 2016
Depth sounder/log	Raymarine I 50 2016
Log	Raymarine I 50 2016
Windset	Raymarine I 50 2016
Repeater	Autohelm ST50
VHF	yes
Autopilot	Robertson HLD 2000
GPS	Furuno

## EQUIPMENT

Fixed windscreen	yes
Sprayhood	2018
Cockpit cover	2018
Winter cover	yes
Cockpit table	yes
Boarding ladder	stainless steel
Anchor	CQR Plough 20kg
Anchor chain	30m
Windlass	electrical Lofrans



Davits	stainless steel
Davits controls	manual
Sea railing	wire
Grab rail (superstructure)	teak
Railing side opening gates	yes
Pushpit	yes
Pulpit	yes
Radar reflector	Trilius trilens 12" 2016
Fenders	yes
Mooring lines	yes
Spare parts	yes
Radio-cd player	Kenwood
Speakers in salon	yes
Clock - barometer	yes
Fire extinguisher	yes

## RIGGING

Rigging	sloop
Standing rigging	wire
Brand mast	Seldén
Material mast	aluminium
Spreaders	2 pair
Mainsail	2017 30m2
Stoway mast	yes
Cutterstay	yes
Jib	yes
Genoa	44m2
Genoa furler	Furlex 204 S 8mm 2016
Cutter furler	Removable
Gennaker	yes
Self tacking jib installation	yes



<b>Reefing System</b>	main in-mast furling
<b>Backstay adjuster</b>	mechanical Hasslefors
<b>Boomvang</b>	gasspring
<b>Primary sheet winch</b>	2x Lewmar T40
<b>Genoa sheetwinches</b>	2x Lewmar ST46
<b>Reefing winch</b>	1x Lewmar ST30
<b>Multifunctional winches</b>	halyard/sheet winches 2x Lewmar ST16 on mast

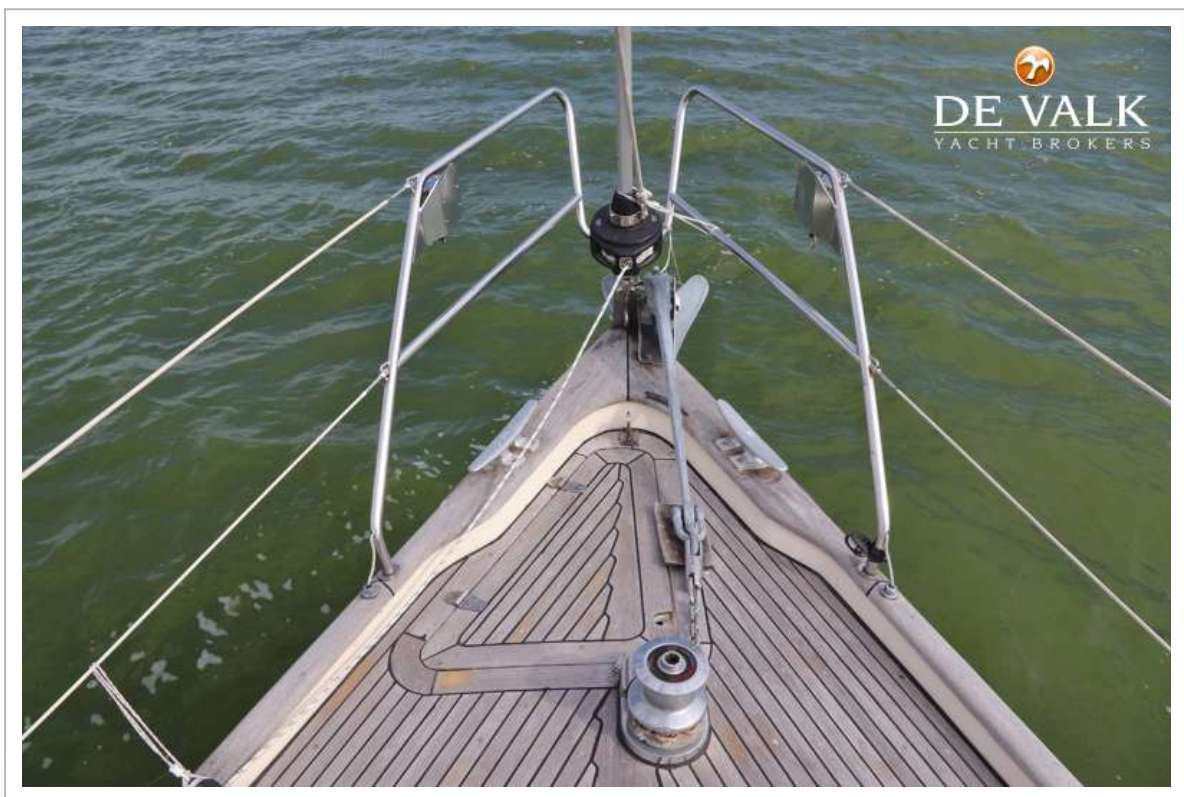




# HALLBERG RASSY 36



# HALLBERG RASSY 36

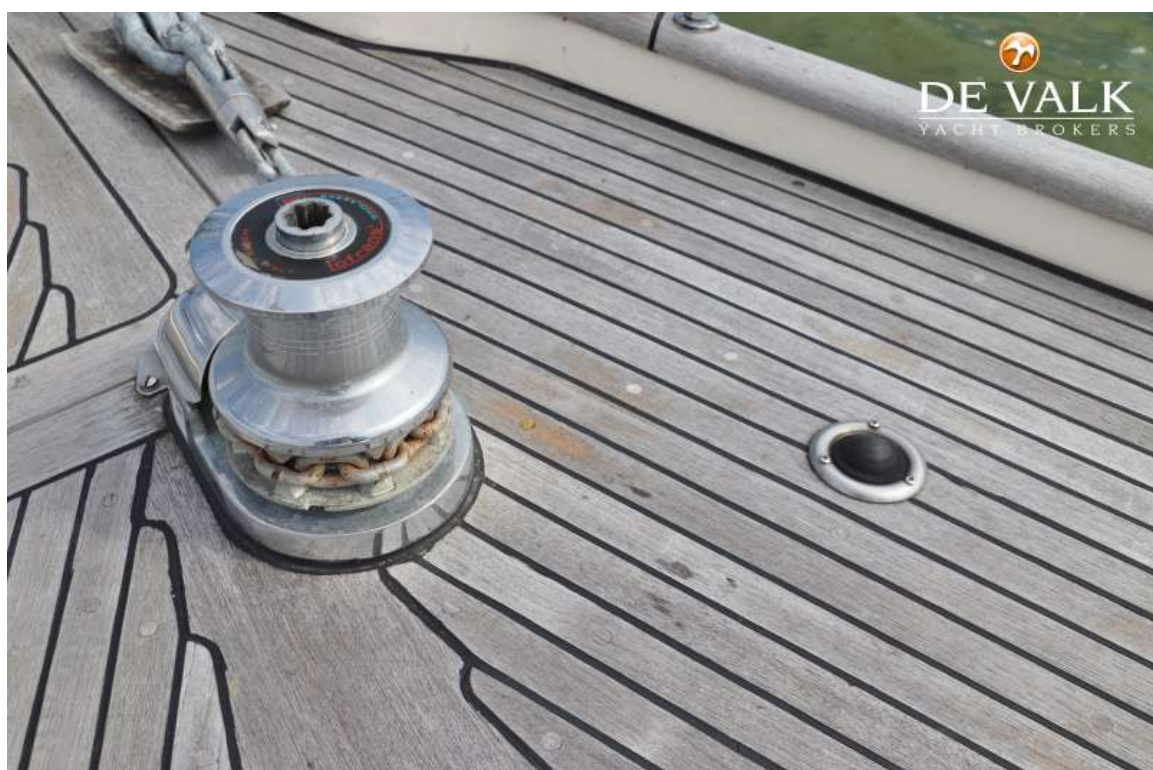




# HALLBERG RASSY 36



# HALLBERG RASSY 36





# HALLBERG RASSY 36



# HALLBERG RASSY 36





# HALLBERG RASSY 36



# HALLBERG RASSY 36





# HALLBERG RASSY 36



# HALLBERG RASSY 36





# HALLBERG RASSY 36

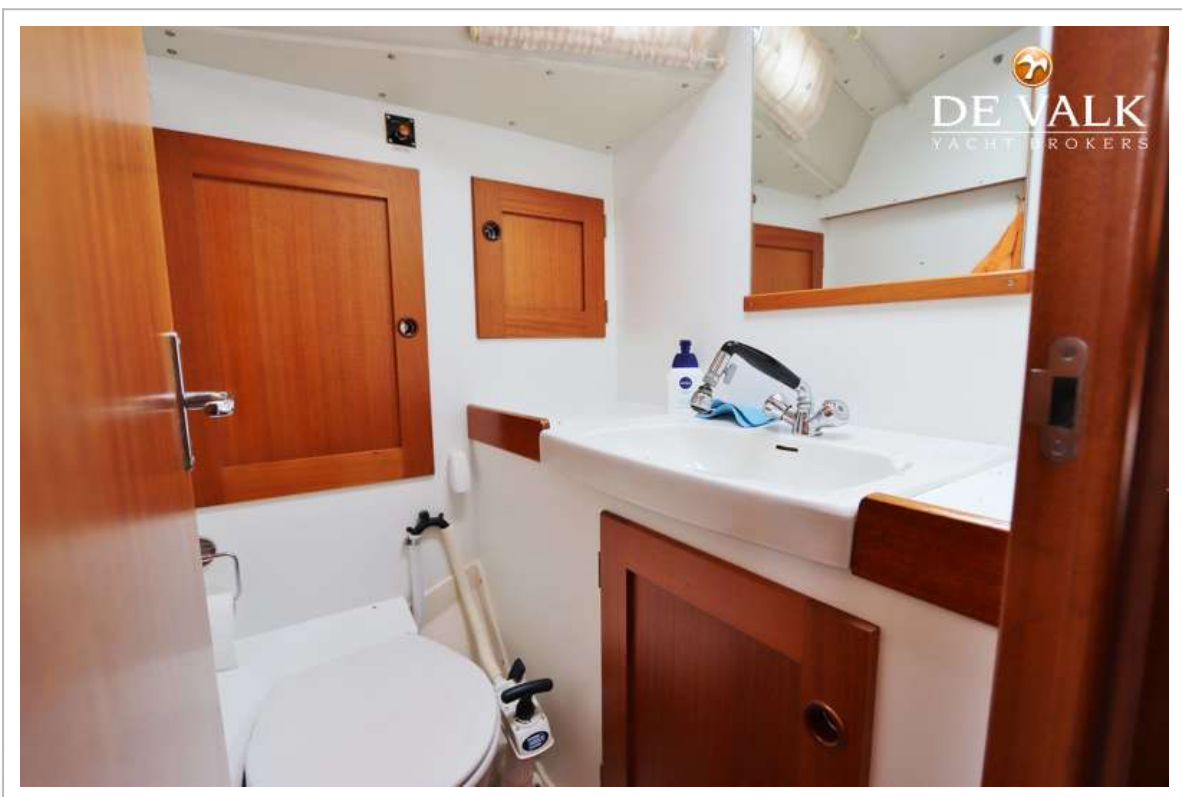
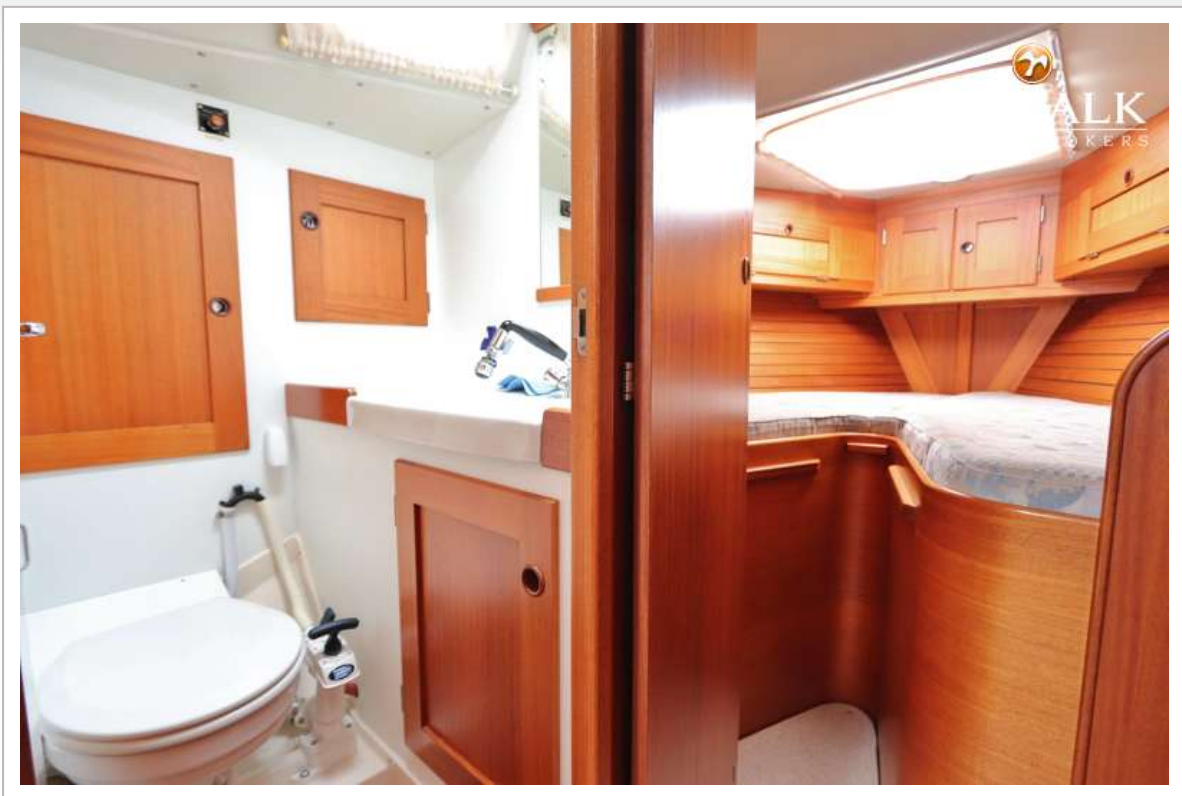


# HALLBERG RASSY 36

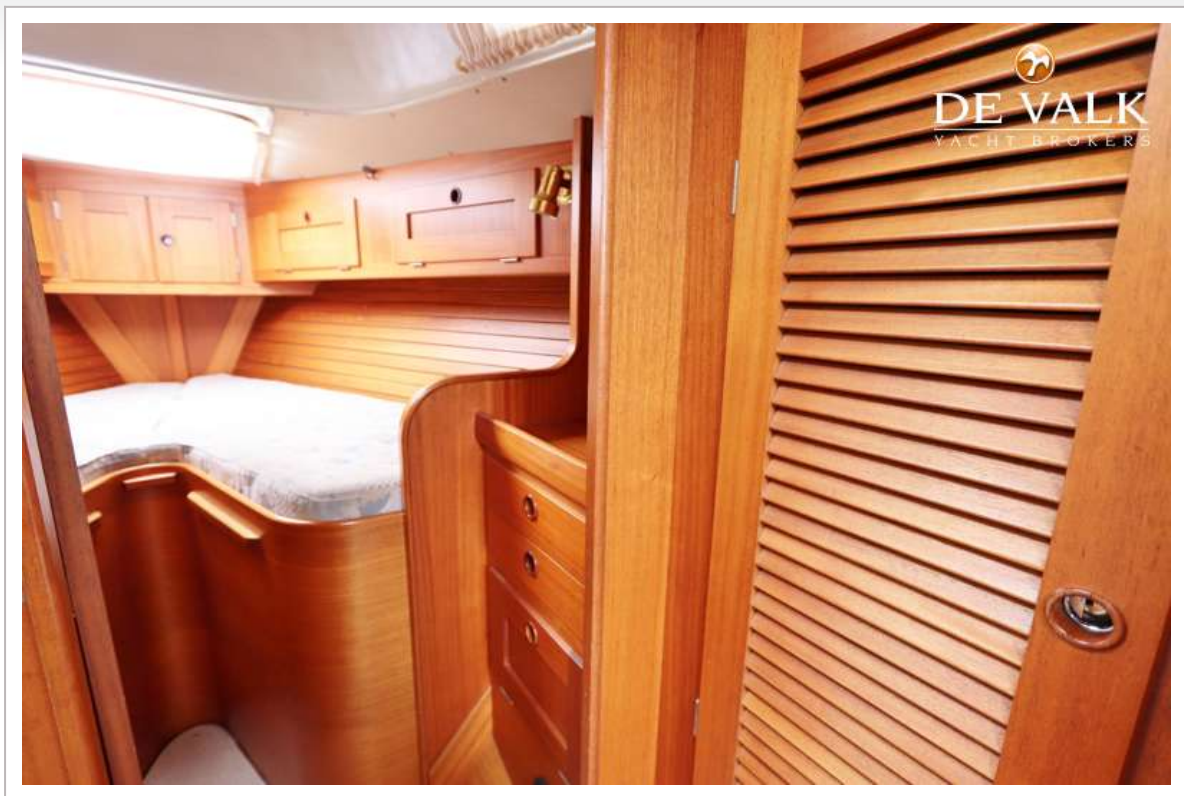




# HALLBERG RASSY 36



# HALLBERG RASSY 36





# HALLBERG RASSY 36

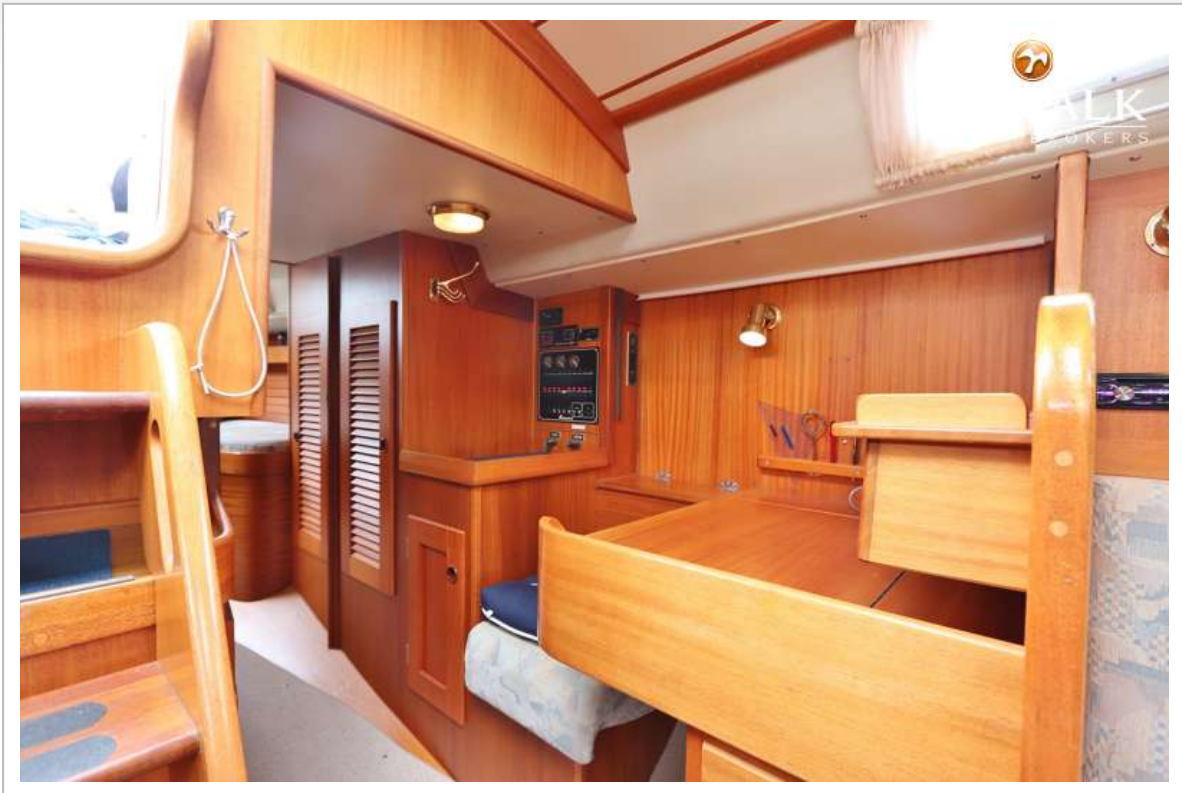


# HALLBERG RASSY 36





# HALLBERG RASSY 36



# HALLBERG RASSY 36





# HALLBERG RASSY 36

