



DEHLER 36 SQ



BROKER'S COMMENTS

The long waterline and an ergonomic, spacious cockpit give the Dehler 36 SQ a modern timeless line. The wide traveler and aft led controls mean this yacht can also be sailed easily and without a full crew. Thanks to its speed potential, the Dehler 36 SQ has proved itself by winning many prestigious regattas. Yacht can be delivered without VAT, asking price is included VAT.

Sander van der Voorn

SPECIFICATIONS

Dimensions	10.95 x 3.59 x 1.95 (m)	Builder	Dehler Yachtbau GmbH
Built	2005	Cabins	3
Material	GRP	Berths	6
Engine(s)	1 x Volvo Penta STDB D1-30 diesel	Hp/Kw	30.00 (hp), 22.05 (kw)
Asking price	sold (VAT)	Lying	contact Monnickendam

CONTACT

Sales office	De Valk Monnickendam B.V.	Telephone	+31 (0)299 65 63 50
Address	Hoogedijk 6 1145 PM Katwoude NL	E-mail	monnickendam@devalk.nl

DISCLAIMER

These particulars are given in good faith as supplied but cannot be guaranteed.



GENERAL

Model	DEHLER 36 SQ
Type	sailing yacht
LOA (m)	10,95
LWL (m)	9,95
Beam (m)	3,59
Draft (m)	1,95
Air draft (m)	17,28
Year built	2005
Launched	April 2006
Builder	Dehler Yachtbau GmbH
Country	Germany
Designer	Judel & Vrolijk
Displacement (t)	6,2
CE norm	A
Hull material	GRP
Hull colour	white
Hull shape	round-bilged
Keel type	fin keel
Superstructure material	GRP
Deck material	GRP
Deck finish	TBS non-skid profile mats
Superstructure deck finish	TBS non-skid profile mats
Cockpit deck finish	teak (2012)
Deckhatch	Lewmar
Fuel tank (litre)	70 L.
Level indicator (fuel tank)	yes
Freshwater tank (litre)	120 L.
Level indicator (freshwater)	And large inspection hatch
Blackwater tank (litre)	48L.
Level indicator (blackwater)	yes



Blackwater tank extraction

deck extraction

Wheel steering

yes

Emergency tiller

yes

More info on hull

Hull conserved with Epoxy anti-osmosis treatment.

ACCOMMODATION

Cabins

3

Berths

6

Interior

mahogany

Saloon

with blue upholstery

Heating

diesel ducted hot air Webasto

Chart table

yes

Aft Cabin

2x

Galley

L-shaped

Sink

stainless steel 2x

Cooker

calor gas 3-burner

Oven

yes

Fridge

Top loading

Owners cabin

double bed

Bed length (m)

yes

Wardrobe

yes

Guest cabin 1

double bed

Bathroom

shared

Toilet

shared

Toilet system

manual Jabsco

Wash basin

in the bathroom

Shower

shared

Guest cabin 2

double bed

MACHINERY

No of engines

1



Make	Volvo Penta
Type	STDB D1-30
HP	30,00
kW	22,05
Fuel	diesel
Year installed	2005
Maximum speed (kn)	6
Drive	sail-drive
Propeller type	folding
Propeller blades	2
Electrical installation	12V/220V
Batteries	yes
Start battery	1x 70Ah
Service battery	2x 100AH
Battery charger	yes
Shorepower	with cable

NAVIGATION

Compass	Suunto
Depth sounder	Raymarine ST60+ Tridata: depth, speed and trip
Windset	Raymarine ST60+ wind set: speed, direction and close hauled
Repeater	Raymarine ST60+ Multi graphic display
Autopilot	Raymarine ST6001 smartpilot
Radar	Raymarine 240E (Atis) with Ray 240E loudspeaker
GPS	Raymarine E7 GPS/Plotter with touch screen of 2012 with WIFI function for I-pad/I-phone of 2012 (I-Pad and I-Phone are not included)
Plotter	Raymarine E7 GPS/Plotter with touch screen of 2012 with WIFI function for I-pad/I-phone of 2012 (I-Pad and I-Phone are not included)

EQUIPMENT



Sprayhood	(2015)
Boarding ladder	stainless steel
Anchor	yes
Anchor chain	yes
Anchor 2	yes
Anchor chain	yes
Sea railing	wire Stainless steel
Pushpit	Stainless steel
Pulpit	Stainless steel
Lifebuoy	yes
Fenders	yes
Mooring lines	yes
Radio-cd player	Blaupunkt
Fire extinguisher	yes

RIGGING

Rigging	sloop (9/10)
Brand mast	Dehler
Material mast	aluminium
Spreaders	2x
Keel stepped mast	yes
Mainsail	Doyle Raudaschl (2013)
Jib	Doyle Raudaschl (2013)
Gennaker	Doyle Raudaschl (2007)
Backstay adjuster	mechanical
Boomvang	Selden rodkicker
Primary sheet winch	Harken 2x 40ST
Secondary sheet winch	Harken 2x 46ST
Halyard winches	Main halyard is electric
Extra info	Maindrop system of 2012 Harken head sail furling system Lazy Jacks of 2013 Lazy Jacks cover of 2012 All sheets and halyards adjustable from cockpit





DEHLER 36 SQ



DEHLER 36 SQ



DEHLER 36 SQ



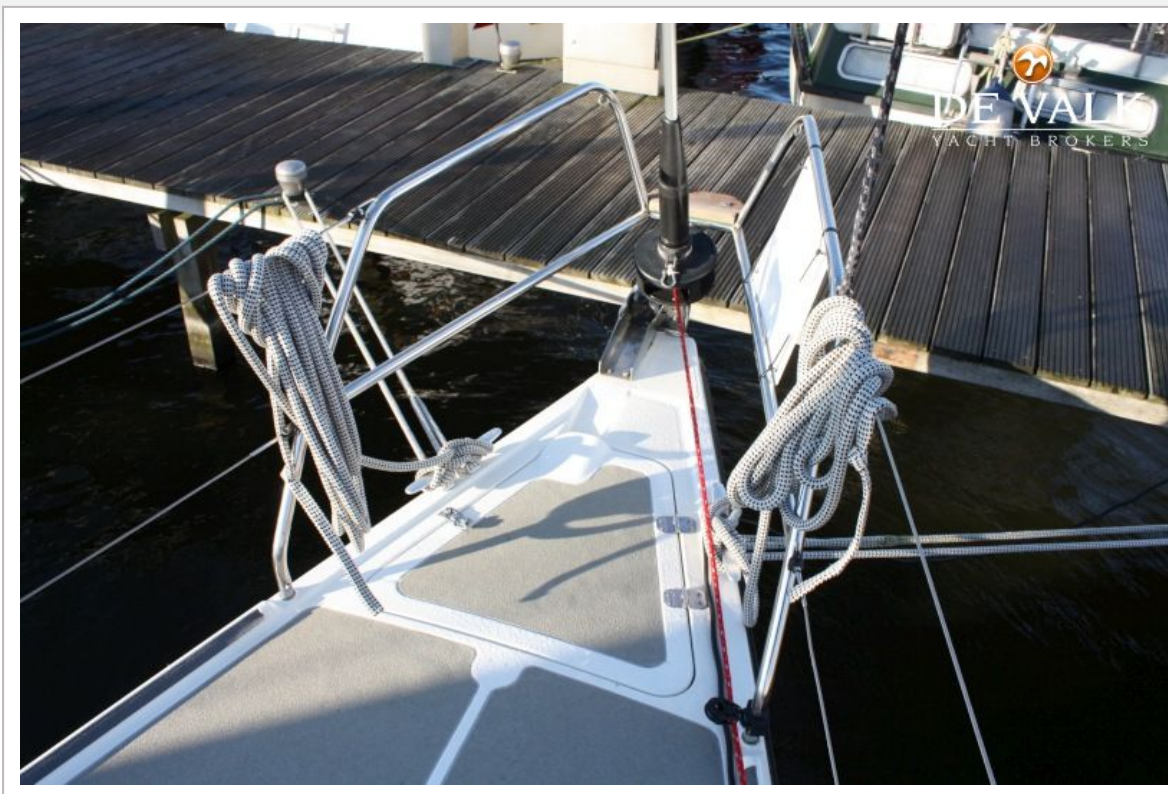
DEHLER 36 SQ



DEHLER 36 SQ



DEHLER 36 SQ



DEHLER 36 SQ



DEHLER 36 SQ



DEHLER 36 SQ



DEHLER 36 SQ



DEHLER 36 SQ



DEHLER 36 SQ



DEHLER 36 SQ



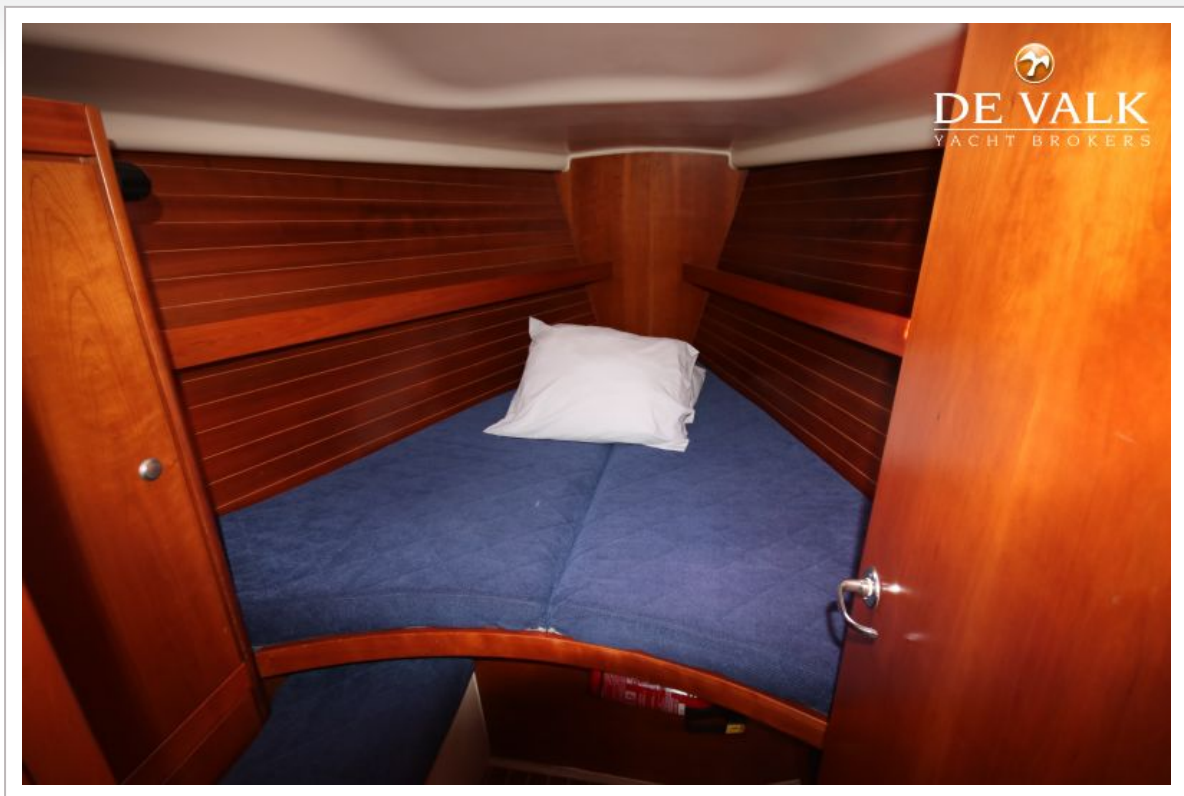
DEHLER 36 SQ

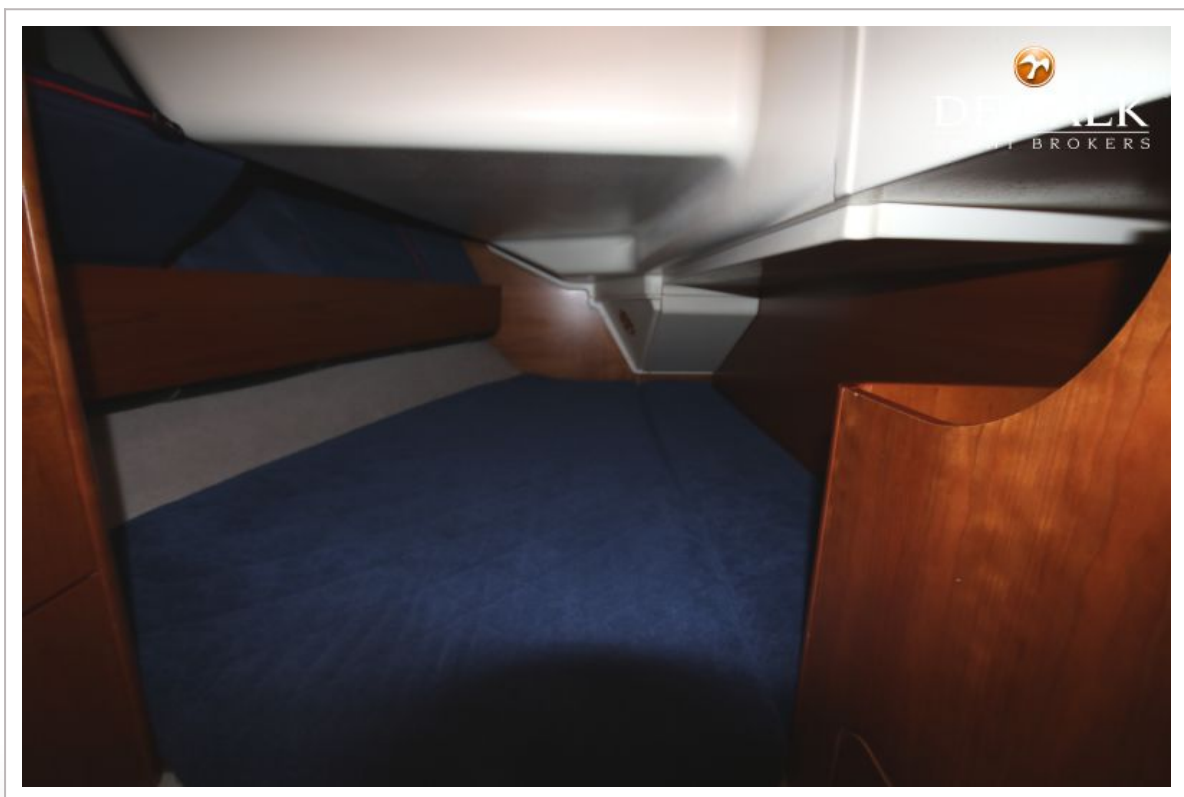
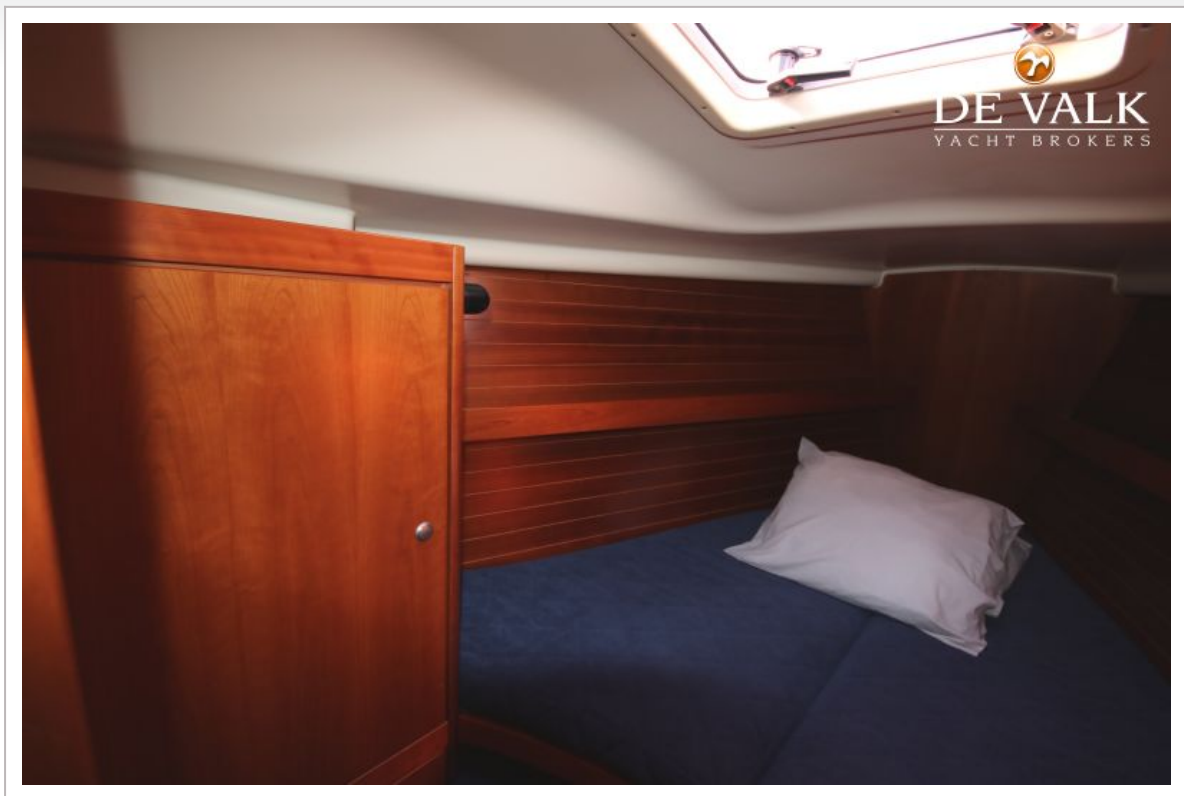


DEHLER 36 SQ

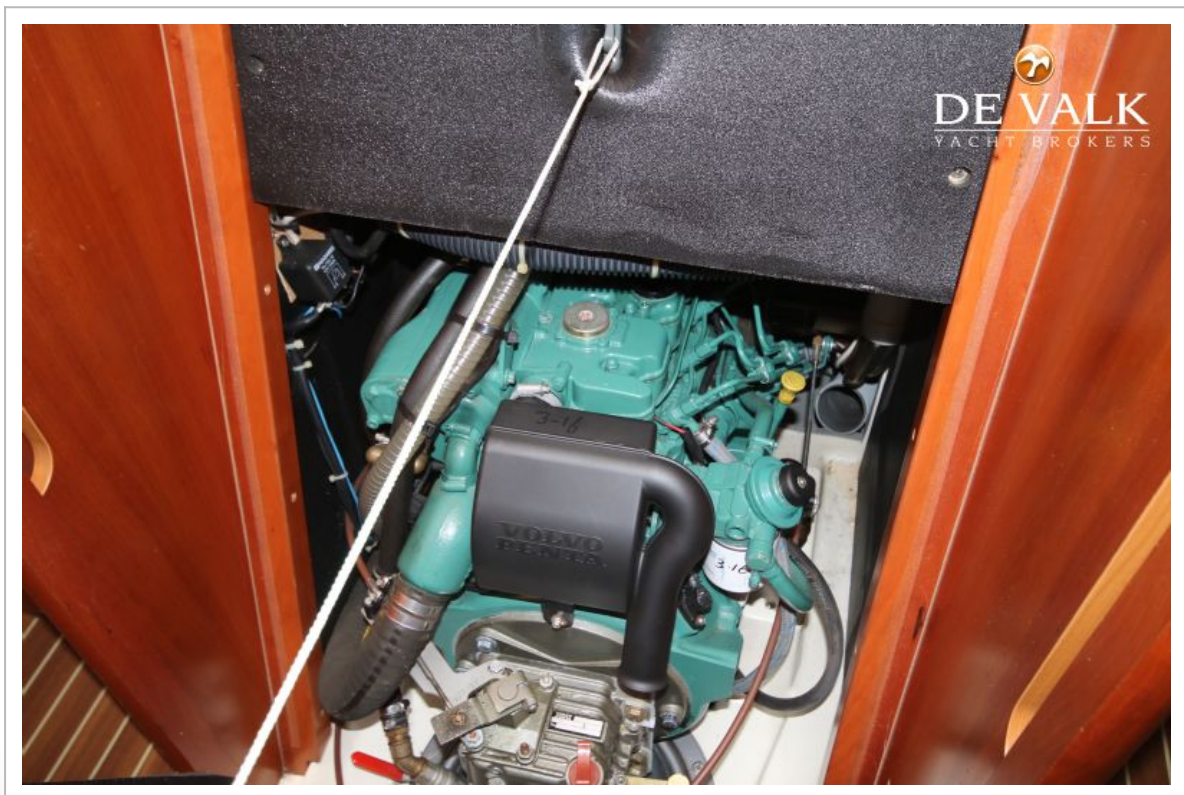


DEHLER 36 SQ

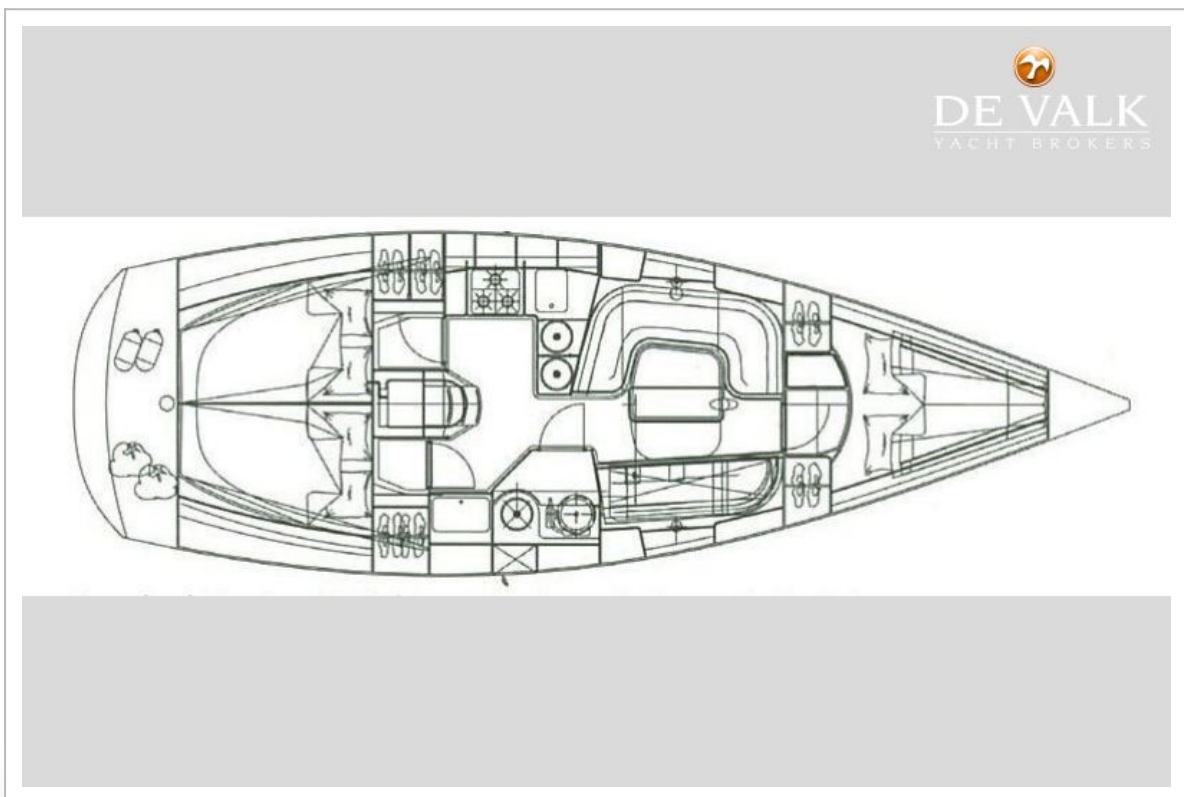
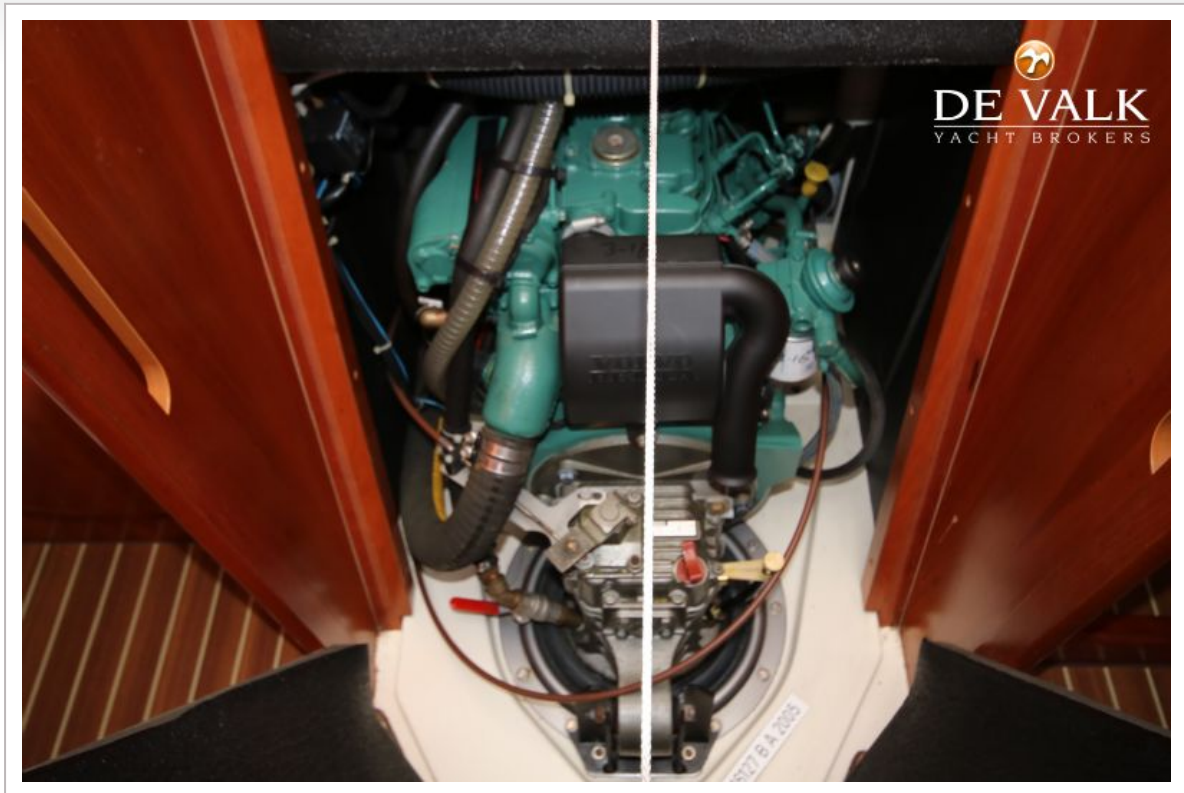




DEHLER 36 SQ



DEHLER 36 SQ



DEHLER 36 SQ

