



DE VALK  
YACHT BROKERS



NAJAD 390



DE VALK  
YACHT BROKERS

BROKERAGE | CHARTER | BERTHS | FINANCE | INSURANCE | YACHT MANAGEMENT

## BROKER'S COMMENTS

Swedish elegance at its best. The gained sail performance and the known Swedish craftsmanship makes the Najad 390 a very good sailing yacht for longer stays aboard as well as safe an reliable platform for long distance cruising. Current owner, still the first, upgraded "Lycka" Spring 2013, included the teak deck.

*Pieter Bosma*

## SPECIFICATIONS

<b>Dimensions</b>	11.75 x 3.50 x 1.85 (m)	<b>Builder</b>	Najad varvet AB
<b>Built</b>	1991	<b>Cabins</b>	2
<b>Material</b>	GRP	<b>Berths</b>	6
<b>Engine(s)</b>	1 x Volvo Penta MD31A diesel	<b>Hp/Kw</b>	62.00 (hp), 45.57 (kw)
<b>Asking price</b>	sold (VAT )	<b>Lying</b>	at sales office

## CONTACT

<b>Sales office</b>	De Valk Monnickendam B.V.	<b>Telephone</b>	+31 (0)299 65 63 50
<b>Address</b>	Hoogedijk 6 1145 PM Katwoude NL	<b>E-mail</b>	monnickendam@devalk.nl

## DISCLAIMER

These particulars are given in good faith as supplied but cannot be guaranteed.



## GENERAL

Model	NAJAD 390
Type	sailing yacht
LOA (m)	11,75
LWL (m)	10,00
Beam (m)	3,50
Draft (m)	1,85
Air draft (m)	18,50
Year built	1991
Builder	Najad varvet AB
Country	Sweden
Designer	G. Nissen
Displacement (t)	9,5
Ballast (tonnes)	4
CE norm	A
Hull material	GRP
Hull colour	off-white Red stripe 2013
Hull shape	S-bilged
Keel type	Semi long keel
Superstructure material	GRP
Deck material	GRP
Deck finish	Teak overhauled '13
Superstructure deck finish	Teak overhauled '13
Cockpit deck finish	Teak
Antifouling (year)	2013
Window frame	aluminum
Window material	glass
Portholes	stainless steel
Fuel tank (litre)	stainless steel 250
Level indicator (fuel tank)	yes
Freshwater tank (litre)	stainless steel 350



Level indicator (freshwater)	yes
Greywater tank (litre)	60 + elec.pump
Wheel steering	yes
Emergency tiller	yes
Extra info	2013: Seacocks check, sea cock holding tank renewed.

## ACCOMMODATION

Cabins	2
Berths	6
Interior	mahogany
Open cockpit	yes
Saloon	yes
Chart table	yes
Galley	yes
Countertop	Renewed 2013 + water taps.
Sink	Double S/S
Cooker	Force 10 with oven and grill (Dec. 2009)
Extractor	Outside exhaust
Fridge	Overhauled 2013
Hot water system	Boiler removed
Water pressure system	electrical
Manual and/or foot pump	See water pump galley
Owners cabin	twin single Mattress (2013)
Wardrobe	yes
Bathroom	yes
Toilet	yes
Toilet system	manual Pump head 2013
Wash basin	yes
Shower	yes
Guest cabin 1	v-bed
Wardrobe	yes



## Extra info

Gas system: Camping gas aamping gas, Trumatic gas remote control, magnetic valve on gas bottle, DSI gas alarm.

## MACHINERY

No of engines	1
Make	Volvo Penta
Type	MD31A
HP	62,00
kW	45,57
Fuel	diesel
Year installed	1991
Maximum speed (kn)	7
Cruising speed (kn)	6
Engine hours	5600
Drive	shaft
Bowthruster	Sleipner Sidepower 6 hp
Propeller type	feathering Max prop
Propeller blades	3
Manual bilge pump	1x
Electric bilge pump	2x (overhauled 2013)
Electrical installation	12V/220V
Start battery	1x 80 Ah (2013) + dynamo.
Service battery	2x 235 Ah (2012) + dynamo 90 Ah (2009)
Battery charger	Mastervolt 220/12V
Inverter	12V/220V
Wind generator	AirXMarine ("blue" silent blades - 2013)
Solar panel	2x 50 Wp
Extra info	2013: Exhaust elbow S/S renewed, service heat exchanger and cooling system, new air filter, service engine. Screw shaft bearing and seal renewed, engine alignment adjusted. Service Maxprop. Service bow thruster, lip seal changed, oil bath refined, bow thruster prop renewed.



## NAVIGATION

Compass	Plath Venus overhauled 2013 by Plath
Depth sounder	B&G
Log	B&G
Windset	B&G
VHF	Hagenuk (no Atis)
Autopilot	Robertson AP200DL Sail
Wind vane steering install.	Pacific-Plus
Radar	Raytheon R40XX 2 connections
Plotter	Simrad CP40 + 2x antenna 2 connections
Radio receiver	Kenwood TS50S SSB receiver+Pactor SCS PTC-Ilex (rod antenna '13)
EPIRB	ACR Global Fix
Extra info	2013: Auto pilot overhauled. B&G windset overhauled + mast cable new. Simrad CP40 plotter/GPS front plate replaced (2013) Deck spotlights (3x) on mast.

## EQUIPMENT

Fixed windscreen	yes
Sprayhood	yes
Bimini	yes
Sun awning	yes
Cockpit cushions	yes
Cockpit table	yes
Boarding ladder	Integrated
Deck shower	yes
Anchor	25 kg buegel
Anchor chain	80 m / 8 mm - S/S
Anchor 2	Fortress FX23 alu
Anchor chain	75 m lead line
Windlass	Lofrans Project 1000 (2008) + RM control
Dinghy	Zodiac C260LR inflatable



Outboard	Yamaha 4 hp
Sea railing	stainless steel
Pushpit	S/S
Pulpit	S/S
Life raft	SeasavePlusR
Life raft (pers)	6
Last life raft survey	2009 - checked in 2013
Lifejackets	yes
Safety lines on deck	PS + SB
Radar reflector	Ocean Sentry active radar reflector
Radio-cd player	+ CD changer (12)
Cockpit speakers	yes
Speakers in salon	yes
Speakers in cabin	Saloon, front + aft cabin
Fire extinguisher	2x
Extra info	Wind pilot overhauled in 2013. Yamaha outboard carburetor and prop of 2013. Heater fitting is prepared.

## RIGGING

Rigging	sloop-cutter
Brand mast	Seldén
Material mast	aluminum
Spreaders	Double set
Mainsail	Socasails furling main (2013)
Stoway mast	yes
Genoa	Doyle '10-overhauled '13
Genoa furler	Reckmann twin rolling reef
Stormjib	Syverssen
Backstay adjuster	hydraulic Navtec
Boomvang	tackle
Genoa sheetwinches	Anderssen ST66



**Spi-pole**

yes

**Extra info**

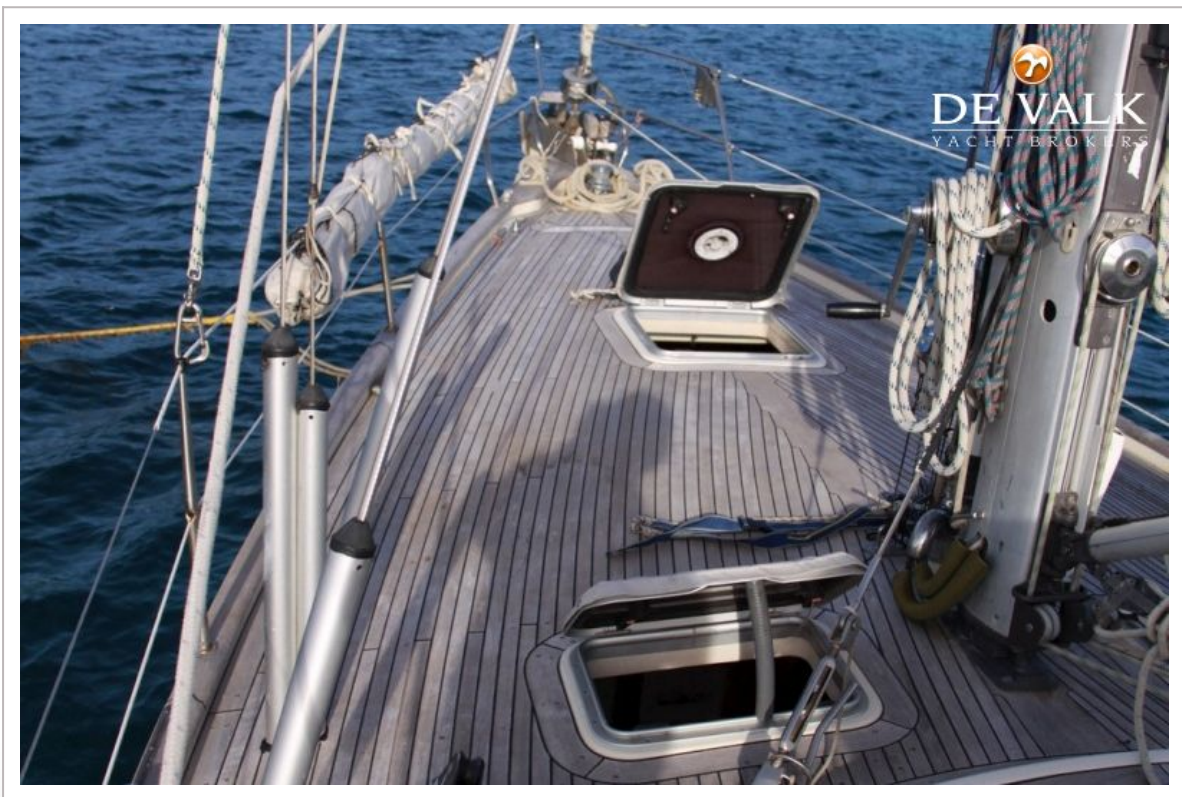
Removable cutter stay, Syverssen Blister 120 m2. Lower stays and back stay of 2013. Rigg revised by rigger in 2013.



# NAJAD 390



# NAJAD 390



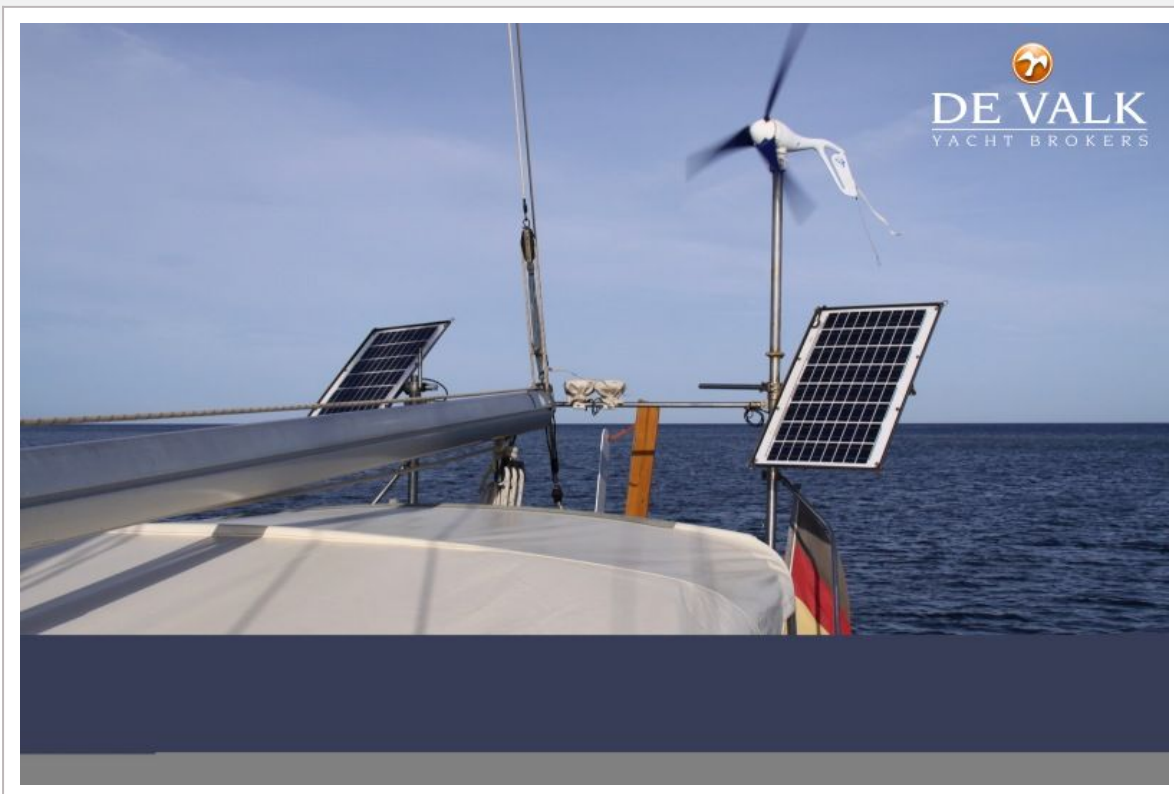
# NAJAD 390



# NAJAD 390



# NAJAD 390



# NAJAD 390

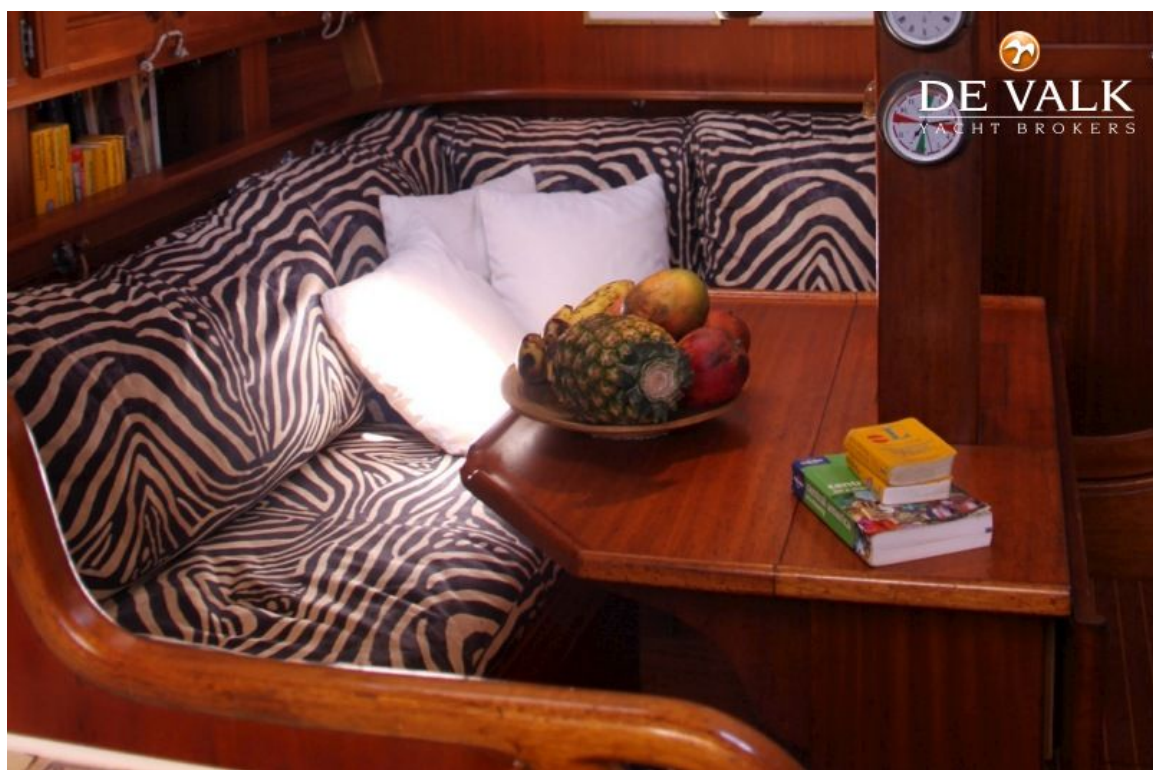




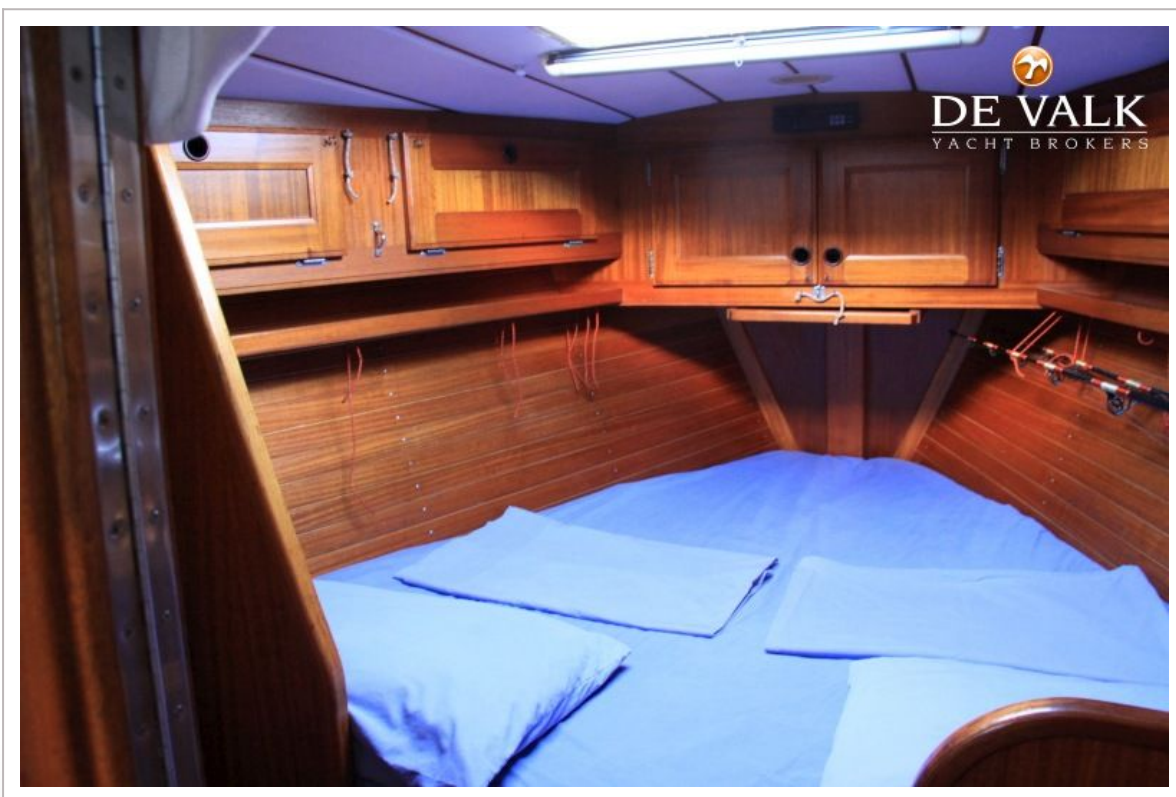
# NAJAD 390



# NAJAD 390



# NAJAD 390



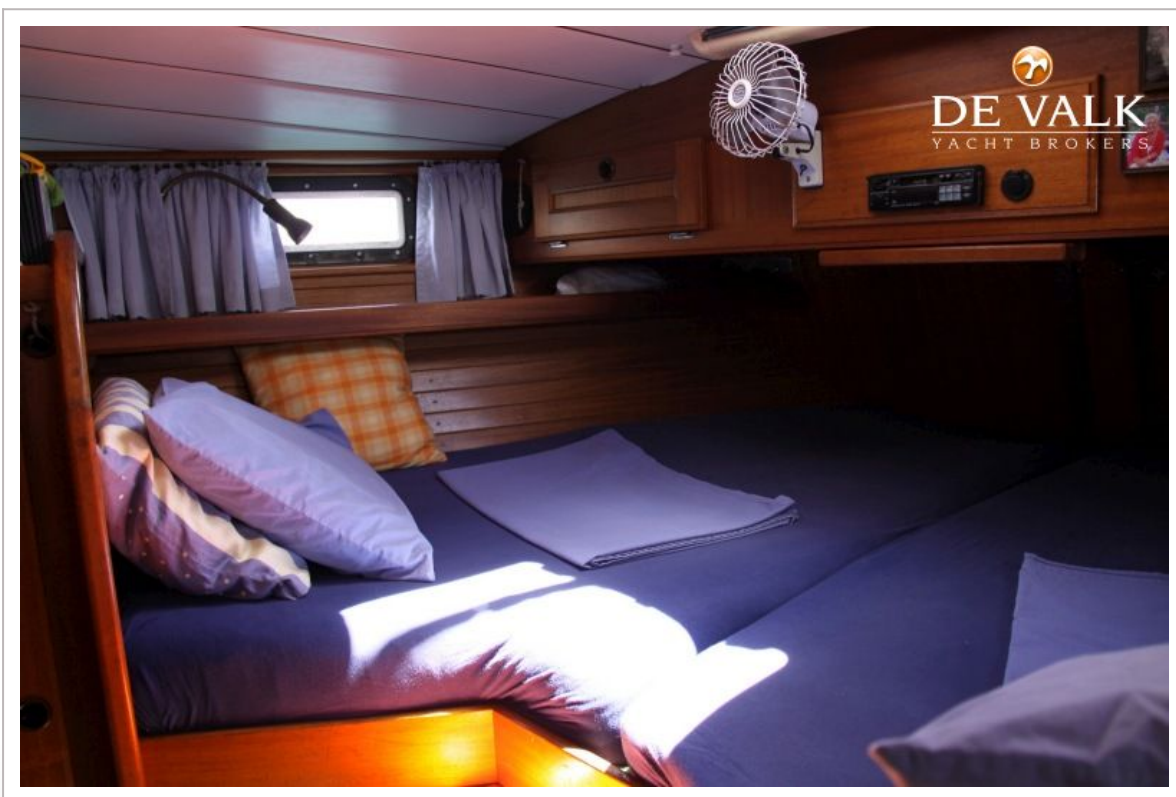
# NAJAD 390



# NAJAD 390



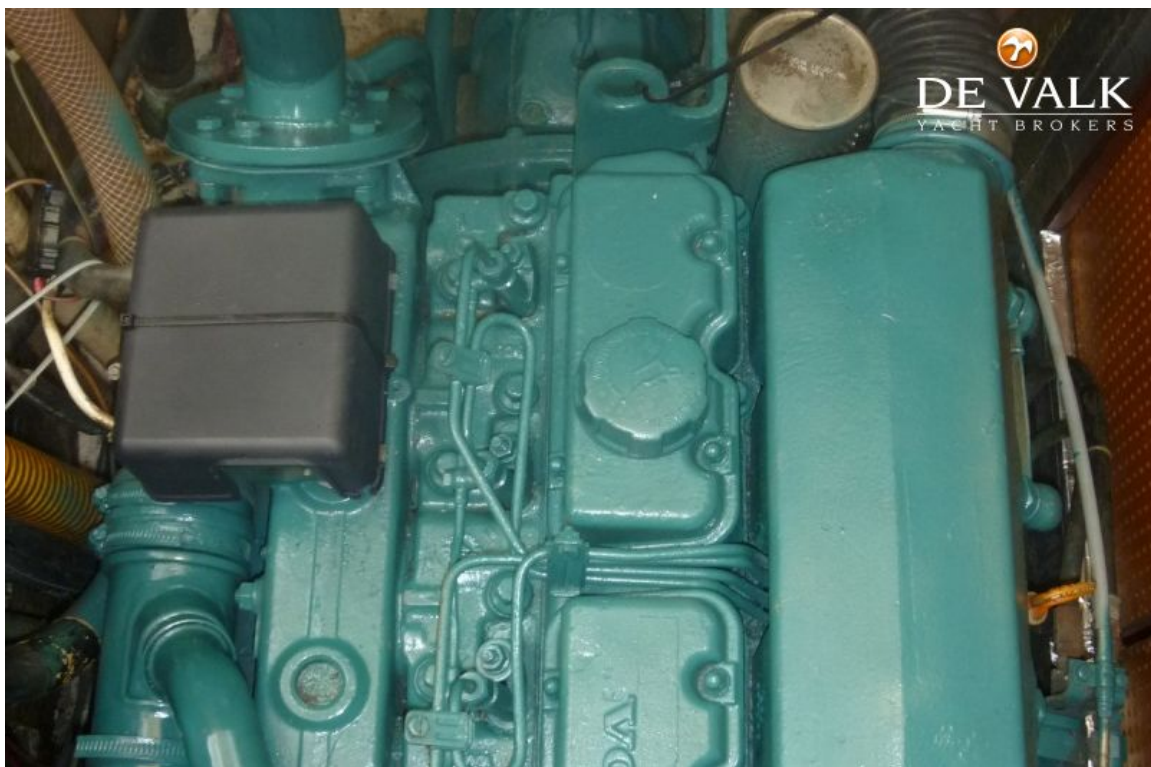
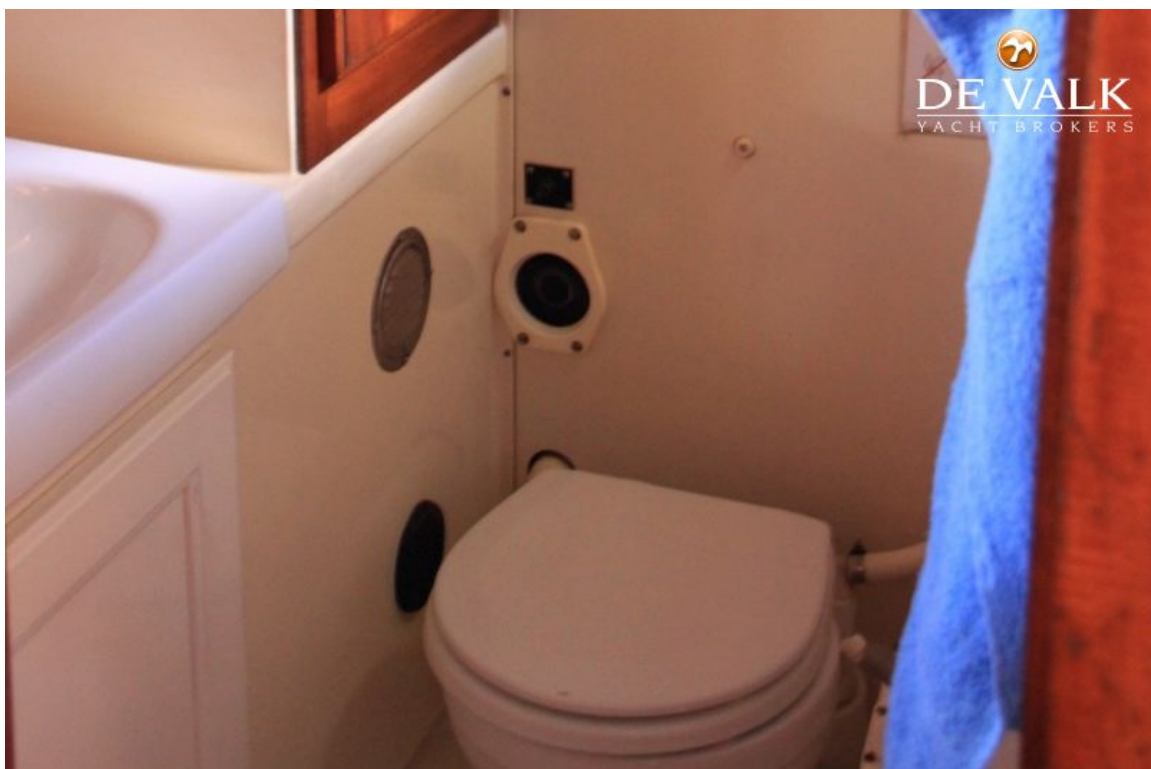
# NAJAD 390



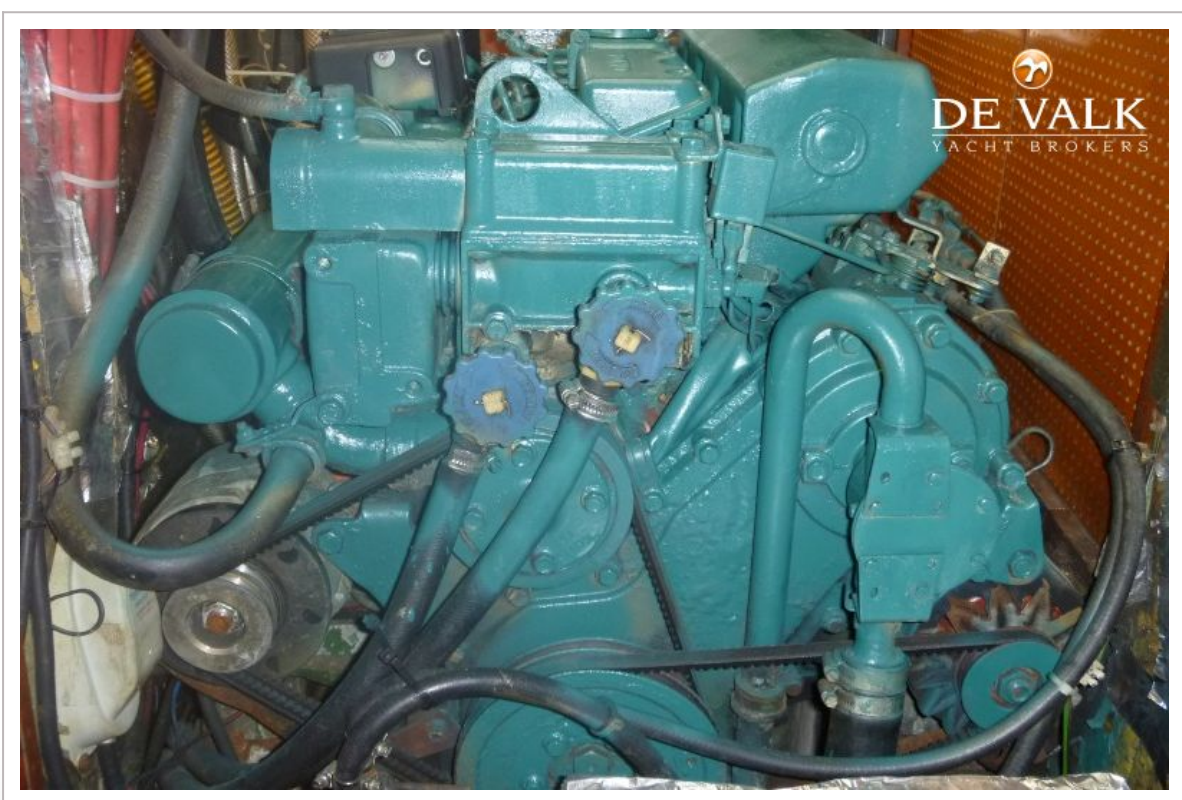
# NAJAD 390

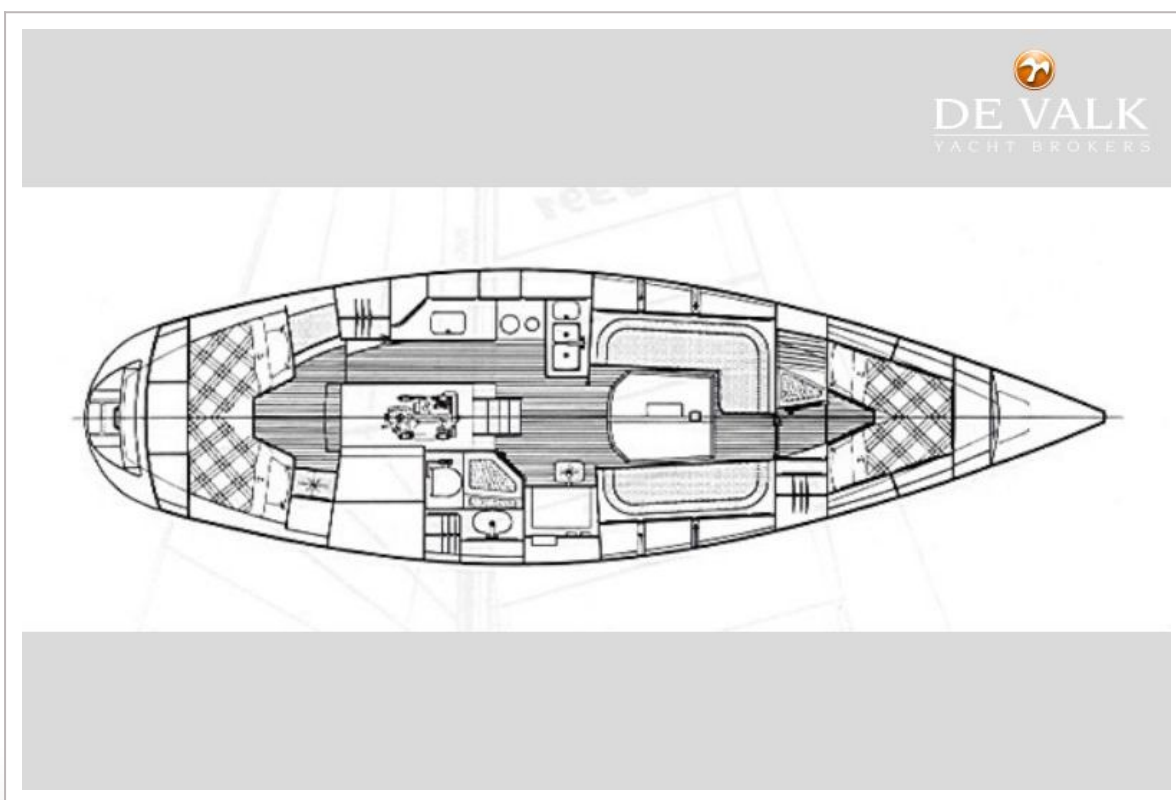


# NAJAD 390



# NAJAD 390





# NAJAD 390

