



DE VALK
YACHT BROKERS



BAVARIA 40



DE VALK
YACHT BROKERS

BROKERAGE | CHARTER | BERTHS | FINANCE | INSURANCE | YACHT MANAGEMENT

BROKER'S COMMENTS

Well kept and well equipped Bavaria 40, an ideal cruising yacht with an in-mast main and furling genoa. Inside two large double cabins, two marine heads, lots of storage space and headroom of 2,05m. This yacht has a Volvo D2-55 diesel engine of 2006! Main sail and genoa of 2011!

Pieter Bosma

SPECIFICATIONS

| | | | |
|---------------------|------------------------------|----------------|------------------------|
| Dimensions | 12.48 x 3.99 x 1.95 (m) | Builder | Bavaria Yachtbau GMBH |
| Built | 2002 | Cabins | 2 |
| Material | GRP | Berths | 6 |
| Engine(s) | 1 x Volvo Penta D2-55 diesel | Hp/Kw | 55.00 (hp), 40.42 (kw) |
| Asking price | sold (VAT) | Lying | at sales office |

CONTACT

| | | | |
|---------------------|---------------------------------------|------------------|------------------------|
| Sales office | De Valk Monnickendam B.V. | Telephone | +31 (0)299 65 63 50 |
| Address | Hoogedijk 6 1145 PM Katwoude NL | E-mail | monnickendam@devalk.nl |

DISCLAIMER

These particulars are given in good faith as supplied but cannot be guaranteed.



GENERAL

| | |
|-----------------------------|------------------------|
| Model | BAVARIA 40 |
| Type | sailing yacht |
| LOA (m) | 12,48 |
| LWL (m) | 10,95 |
| Beam (m) | 3,99 |
| Draft (m) | 1,95 |
| Air draft (m) | 17,50 |
| Headroom (m) | 1,95 |
| Year built | 2002 |
| Builder | Bavaria Yachtbau GMBH |
| Country | Germany |
| Designer | J&J Design |
| Displacement (t) | 7,9 |
| Ballast (tonnes) | lead 2,85 |
| CE norm | A |
| Hull material | GRP |
| Hull colour | white |
| Hull shape | roundbilged |
| Keel type | fin keel |
| Superstructure material | GRP |
| Rubbing strake | stainless steel + teak |
| Deck material | GRP |
| Deck finish | anti-slip paint |
| Cockpit deck finish | teak |
| Dorades | yes |
| Window frame | aluminum |
| Window material | perspex |
| Fuel tank (litre) | polyethylene 150 |
| Level indicator (fuel tank) | yes |
| Freshwater tank (litre) | polyethylene 2x 150 |



| | |
|------------------------------|-----------------------|
| Level indicator (freshwater) | yes |
| Blackwater tank extraction | yes |
| Greywater tank (litre) | polyethylene 40 |
| Wheel steering | cable steering |
| Emergency tiller | yes |
| More info on paintwork | yes |
| Extra info | Pedestal cover (2012) |

ACCOMMODATION

| | |
|-----------------------|--|
| Cabins | 2 |
| Berths | 6 |
| Interior | mahogany |
| Layout | U-shaped settee + two comfortable chairs |
| Floor | woodprint |
| Saloon | yes |
| Headroom saloon (m) | 1,95 m. |
| Heating | Eberspeacher D5LC |
| Chart table | yes |
| Galley | yes |
| Countertop | yes |
| Sink | stainless steel 2x |
| Cooker | calor gas |
| Oven | yes |
| Fridge | yes |
| Hot water system | Engine/220v |
| Water pressure system | electrical |
| Owners cabin | double bed |
| Bed length (m) | 2,00 m. |
| Wardrobe | yes |
| Bathroom | en suite |
| Toilet | yes |



| | |
|---------------|------------------------|
| Toilet system | manual |
| Shower | + pump |
| Guest cabin 1 | double bed |
| Wardrobe | yes |
| Bathroom | yes |
| Toilet | yes |
| Toilet system | manual |
| Wash basin | yes |
| Shower | yes |
| Extra info | 2 comfortable settee's |

MACHINERY

| | |
|-----------------------|---------------------------|
| No of engines | 1 |
| Make | Volvo Penta |
| Type | D2-55 |
| HP | 55,00 |
| kW | 40,42 |
| Fuel | diesel |
| Year installed | 2006 |
| Maximum speed (kn) | 8 |
| Cruising speed (kn) | 7 |
| Consumption (l/hr) | 3 |
| Engine hours | Broken |
| Engine cooling system | freshwater heat exchanger |
| Drive | sail-drive |
| Engine controls | bowden cable |
| Gearbox | mechanical |
| Exhaust | watercooled |
| Propeller type | (of 2012) |
| Manual bilge pump | yes |
| Electric bilge pump | yes |



| | |
|-------------------------|------------------------|
| Electrical installation | 12v / 220 v |
| Start battery | 55 Ah (April 2013) |
| Service battery | 2x 140 Ah (April 2013) |
| Battery charger | 24Ah |
| Shorepower | with cable |

NAVIGATION

| | |
|-------------------|---|
| Compass | Silva |
| Windset | Raymarine ST 60 |
| VHF | Simrad + DSC/Atis |
| Autopilot | Technautic - hydr. |
| GPS | Furuno GP 31 |
| Plotter | Standard Horizon |
| Navtex | Nasa Navtex Pro |
| Personal computer | Board PC + 17" monitor |
| AIS receiver | yes |
| Extra info | Raytheon ST60 Tridata: depth/log/speed, GPS daughter Cetrek C-net 2000. |

EQUIPMENT

| | |
|----------------------------|-----------------|
| Sprayhood | yes |
| Cockpit table | Teak |
| Bathing platform | yes |
| Boarding ladder | stainless steel |
| Deck shower | Warm/cold |
| Anchor | CQR - 21 kg |
| Anchor chain | 50 m - 8mm |
| Anchor 2 | yes |
| Sea railing | stainless steel |
| Railing side opening gates | yes |
| Pushpit | S/S |



| | |
|-----------------------------------|------------------------------|
| Pulpit | S/S |
| Life raft | valise (or bag) Arimar Extra |
| Life raft (pers) | 6 |
| Last life raft survey | 2008 |
| Lifebuoy | yes |
| Safety lines on deck | yes |
| Radio-cd player | yes |
| Cockpit speakers | yes |
| Speakers in salon | yes |
| Clock - barometer | yes |
| Fire extinguisher | 3x Powder |
| Latest extinguisher survey | Must be checked |

RIGGING

| | |
|---------------------------|---|
| Rigging | sloop |
| Material mast | aluminum |
| Mainsail | Hydra Net (2011) |
| Stoway mast | yes |
| Jib | Original |
| Genoa | Hydra Net (2011) |
| Genoa furler | Furlex |
| Boomvang | mechanical |
| Genoa sheetwinches | 2x ST |
| Halyard winches | 2x ST |
| Spi-pole | aluminum |
| Extra info | Original mainsail + genoa (2006) available. |



BAVARIA 40



BAVARIA 40





BAVARIA 40



BAVARIA 40



BAVARIA 40



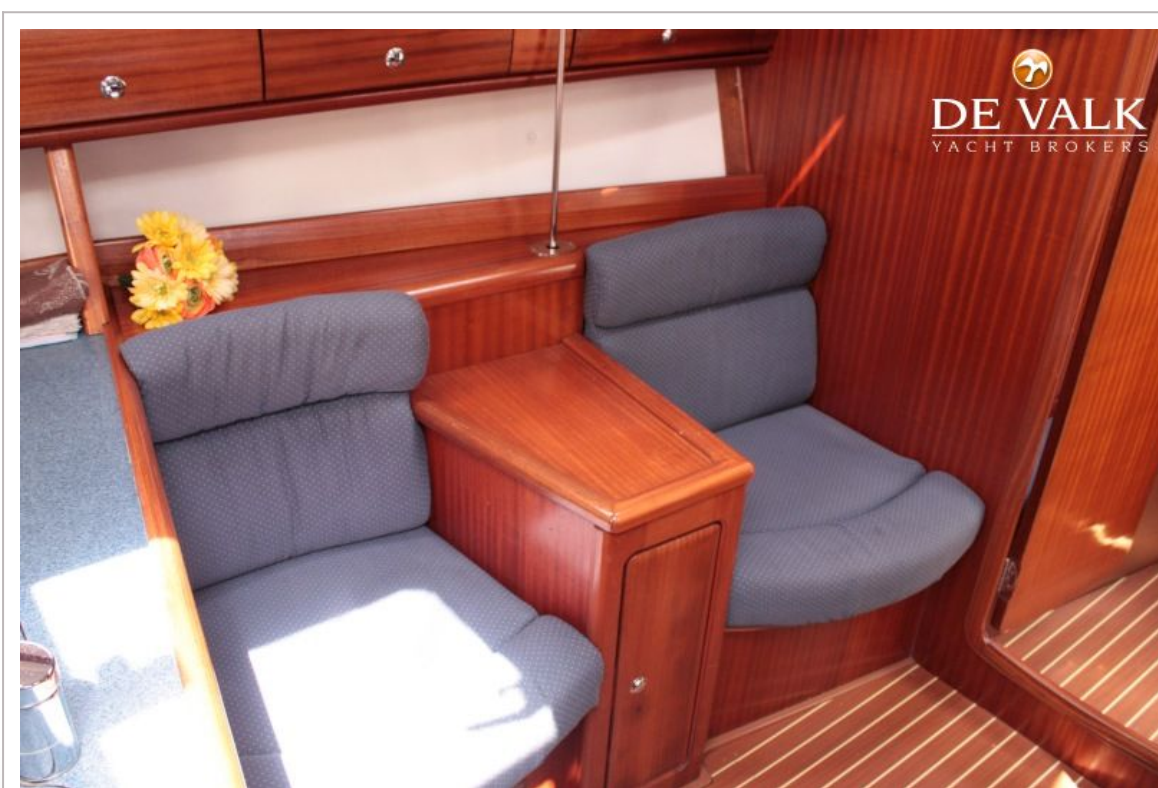
BAVARIA 40



BAVARIA 40



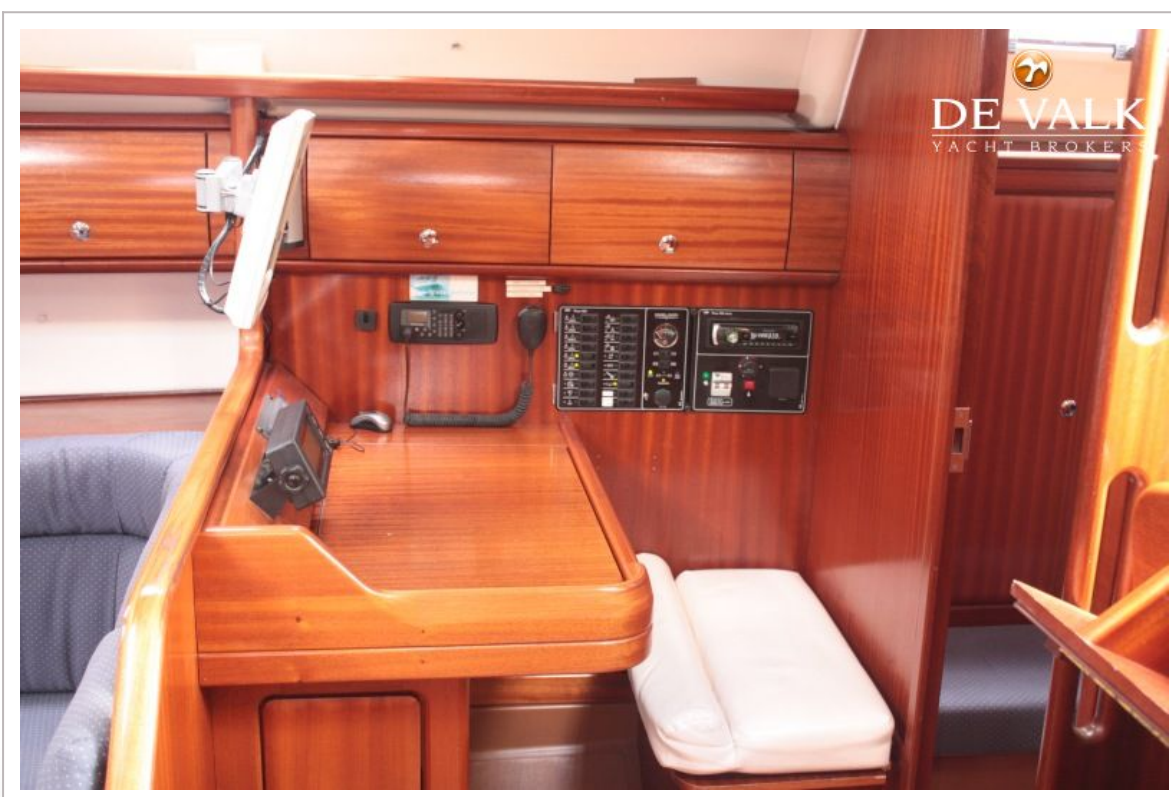
BAVARIA 40



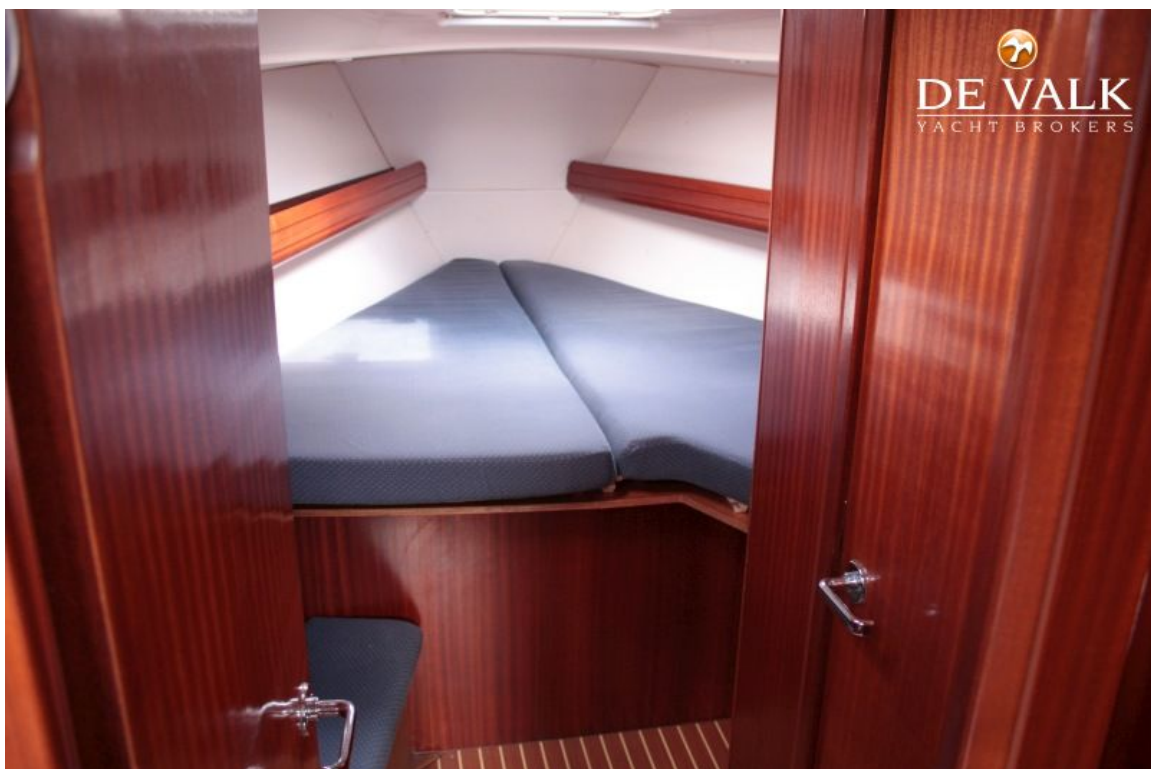
BAVARIA 40



BAVARIA 40

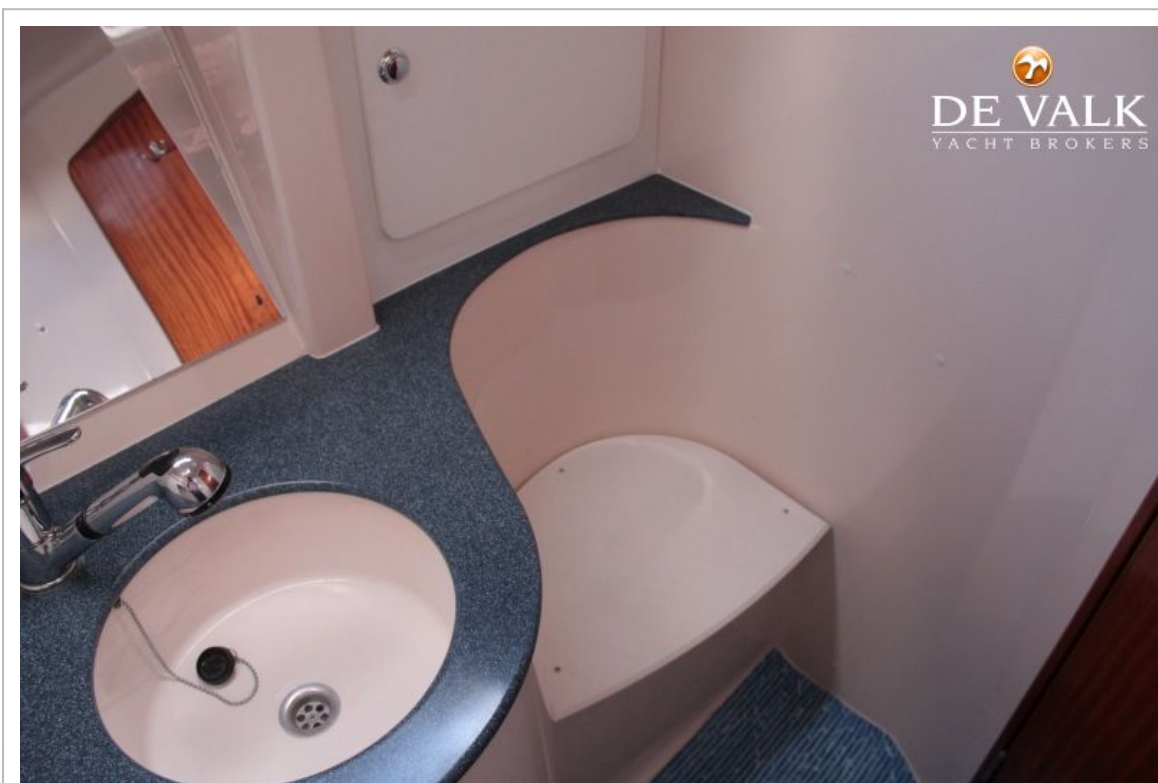
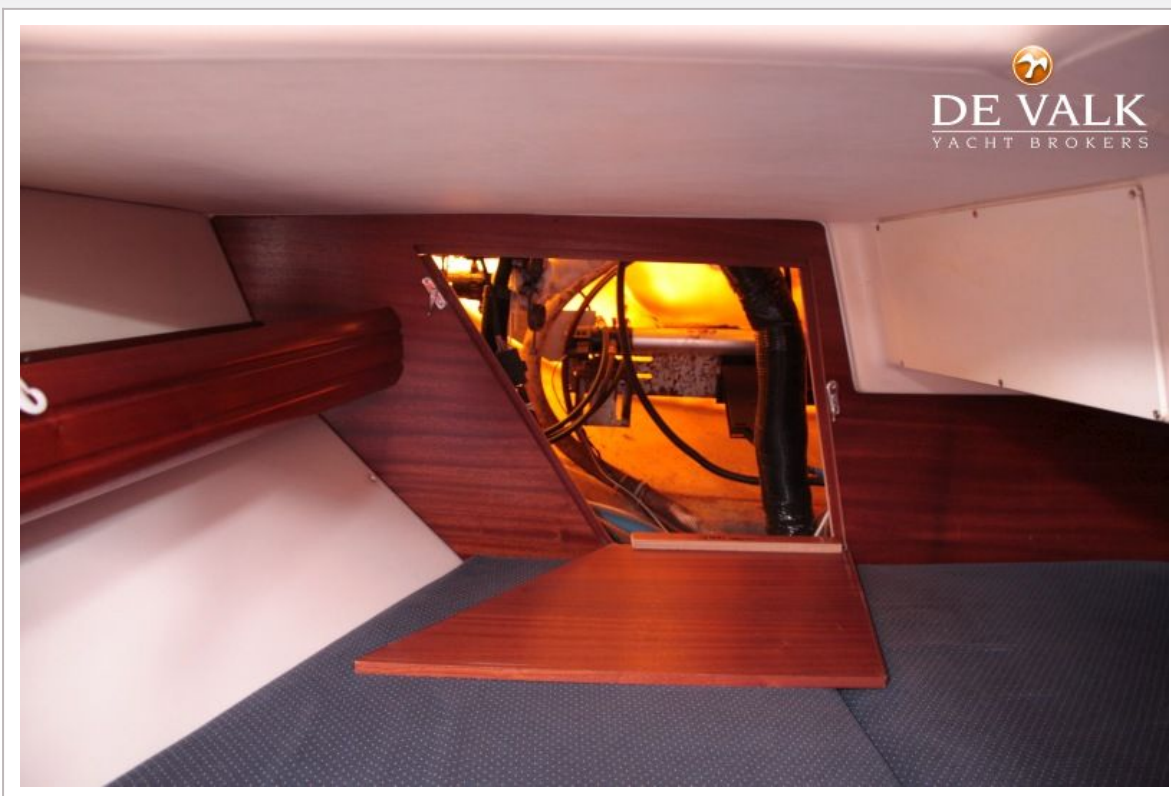


BAVARIA 40

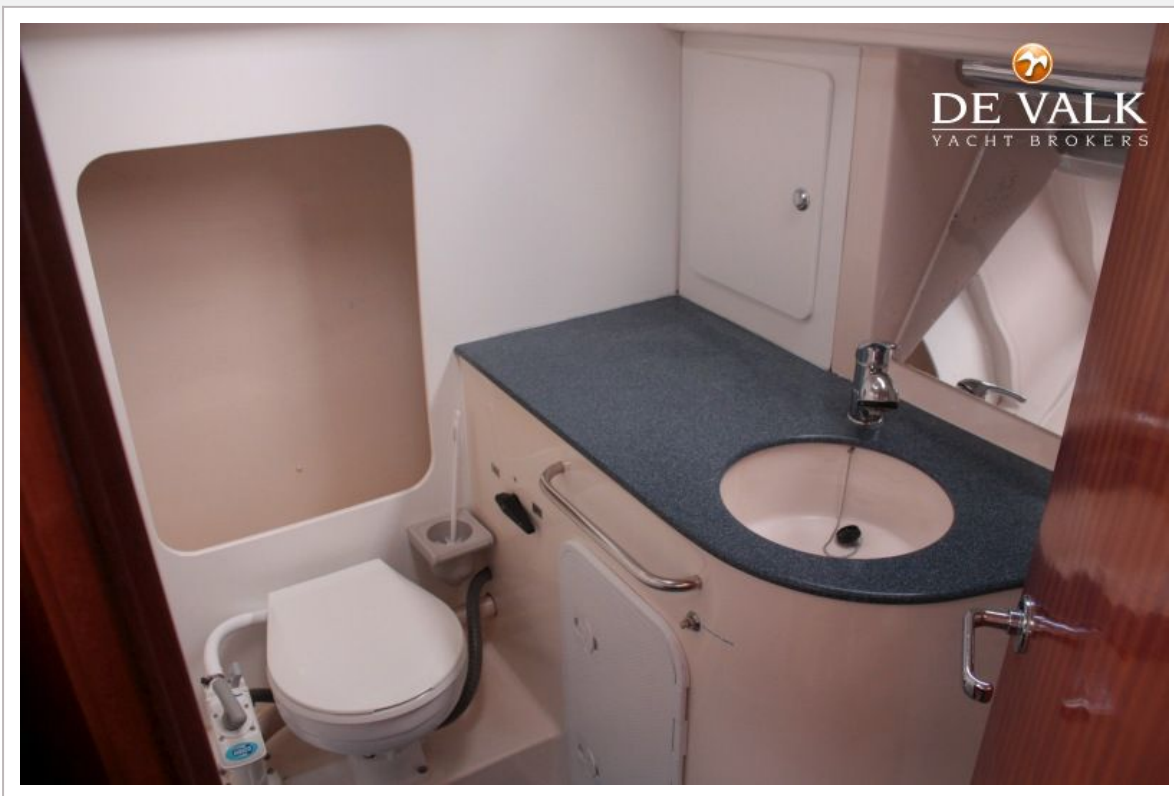


BAVARIA 40

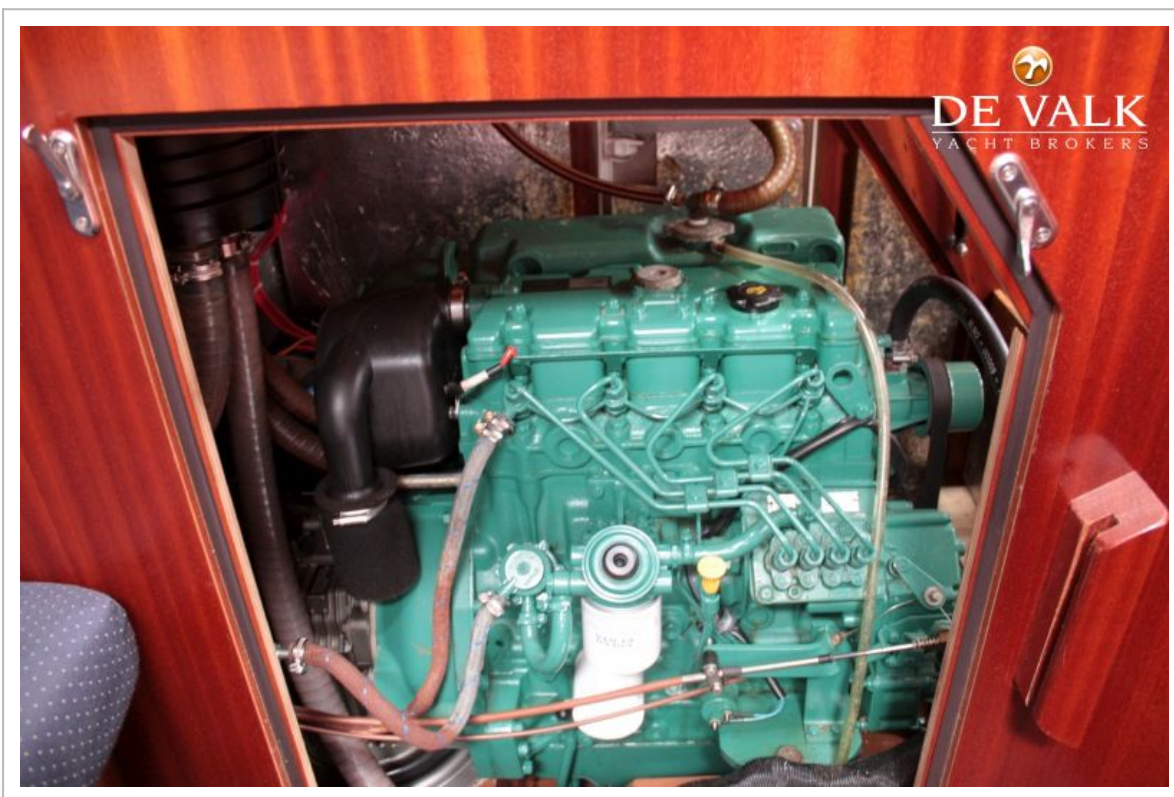
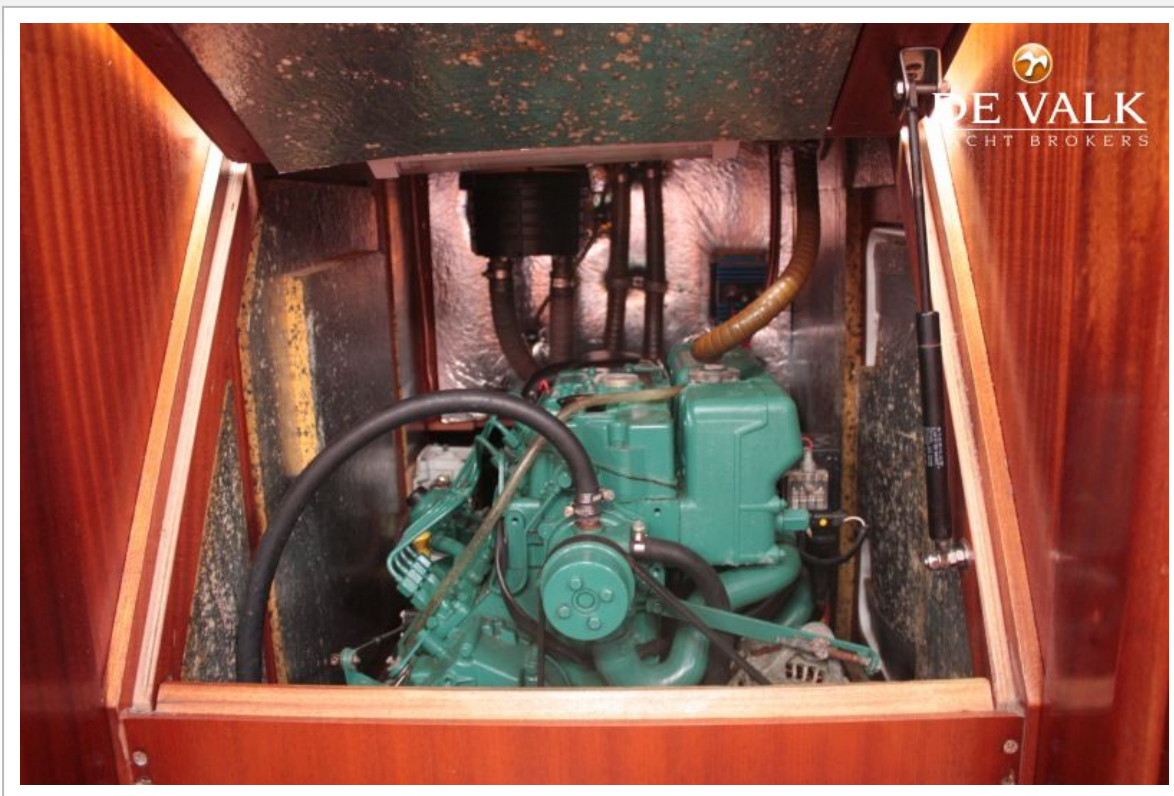




BAVARIA 40



BAVARIA 40



BAVARIA 40

