



CONTEST 38S



DE VALK
YACHT BROKERS

BROKER'S COMMENTS

Designed by Dick Zaal, the concept of the Contest 38 is a seaworthy sailing yacht with extremely comfortable living accommodations, efficient at sea and comfortable in port. Standing rig renewed in 2012, Off-shore/racing main sail and mizzen of 2012.

Reinier van der Wolf

SPECIFICATIONS

Dimensions	11.36 x 3.66 x 1.95 (m)	Builder	Conyplex BV, Alkmaar
Built	1981	Cabins	2
Material	GRP	Berths	6
Engine(s)	1 x Volvo Penta MD 21 B diesel	Hp/Kw	52.00 (hp), 38.22 (kw)
Asking price	sold (VAT)	Lying	at sales office

CONTACT

Sales office	De Valk Monnickendam B.V.	Telephone	+31 (0)299 65 63 50
Address	Hoogedijk 6 1145 PM Katwoude NL	E-mail	monnickendam@devalk.nl

DISCLAIMER

These particulars are given in good faith as supplied but cannot be guaranteed.



GENERAL

Model	CONTEST 38S
Type	sailing yacht
LOA (m)	11,36
LWL (m)	9,30
Beam (m)	3,66
Draft (m)	1,95
Air draft (m)	14,80
Headroom (m)	1,96
Year built	1981
Builder	Conyplex BV, Alkmaar
Country	The Netherlands
Designer	Dick Zaal
Displacement (t)	8,4
Ballast (tonnes)	lead 3,445
Hull material	GRP
Hull colour	white
Hull shape	roundbilged
Keel type	fin keel
Superstructure material	GRP
Rubbing strake	wood
Deck material	GRP
Deck finish	anti-slip paint
Superstructure deck finish	anti-slip paint
Cockpit deck finish	teak
Antifouling (year)	2012
Window frame	aluminum 2011
Window material	tempered glass
Fuel tank (litre)	stainless steel 240
Freshwater tank (litre)	stainless steel 350
Wheel steering	mechanical Whitlock



Emergency tiller stainless steel

ACCOMMODATION

Cabins	2
Berths	6
Interior	teak
Floor	teak + carpet on top.
Saloon	yes
Headroom saloon (m)	1,96
Heating	diesel ducted hot air Webasto HL18D
Chart table	yes
Dinette	L-shaped
Dinette to convert into berth	yes
Galley	yes
Countertop	plastic
Sink	stainless steel 1 x
Cooker	calor gas 3 burner Dometic (2013)
Oven	Dometic
Fridge	Frigoboat
Hot water system	220V + engine Boiler
Water pressure system	electrical
Owners cabin	double bed After
Bed length (m)	2.00 x 1.75
Wardrobe	hanging/drawers/shelves
Guest cabin 1	v-bed Forward
Bed length (m)	2.00 x 1.75
Wardrobe	shelves
Bathroom	shared
Toilet	shared
Toilet system	manual Jabsco
Wash basin	in the bathroom



Shower	shared
Extra info	Upholstry in saloon renewed in 2011.

MACHINERY

No of engines	1
Make	Volvo Penta
Type	MD 21 B
HP	52,00
kW	38,22
Fuel	diesel
Year installed	1980
Engine cooling system	freshwater heat exchanger
Drive	shaft
Engine controls	mechanical
Gearbox	Volvo Penta MS3
Propeller type	fixed
Propeller blades	2
Propeller shaft material	stainless steel
Shaft lubrication	water
Manual bilge pump	RM69
Electrical installation	220/12V
Batteries	yes
Battery charger	Victron Skylla 12/25
Shorepower	yes

NAVIGATION

Compass	Sestrel
Electric compass	Autohelm
Depth sounder	Autohelm
Log	Autohelm
Windset	Autohelm



GPS

MLor FX 312

Extra info

Autohelm Multi

EQUIPMENT

Fixed windscreen

Vetus

Sprayhood

Must be repaired

Cockpit cover

Must be checked

Cockpit table

yes

Boarding ladder

stainless steel

Anchor

yes

Anchor chain

yes

Windlass

manual

Sea railing

wire

Grab rail (superstructure)

teak

Pushpit

yes

Pulpit

yes

Fenders

yes

Mooring lines

yes

iPod connection

Philips Micro System DCM 292

Clock - barometer

VDO

Fire extinguisher

yes

RIGGING

Rigging

Ketch

Brand mast

Seldén

Material mast

aluminum

Spreaders

One set

Mainsail cover

+ lazy jack (2012)

Fully battened mainsail

Off-shore/racing (2012)

Mizzen

Off-shore/racing (2012)

Mizzen sailcover

Blue



Genoa	yes
Genoa furler	Profurl P40
Backstay adjuster	mechanical Barbarossa
Boomvang	tackle
Genoa sheetwinches	2x Enkes 28T
Halyard winches	2x Enkes 18 + 1x Enkes12 (on mast) 1 x Enkes 12 (Mizzen)
Spi-pole	aluminum
Extra info	Standing rigging renewed in 2012.



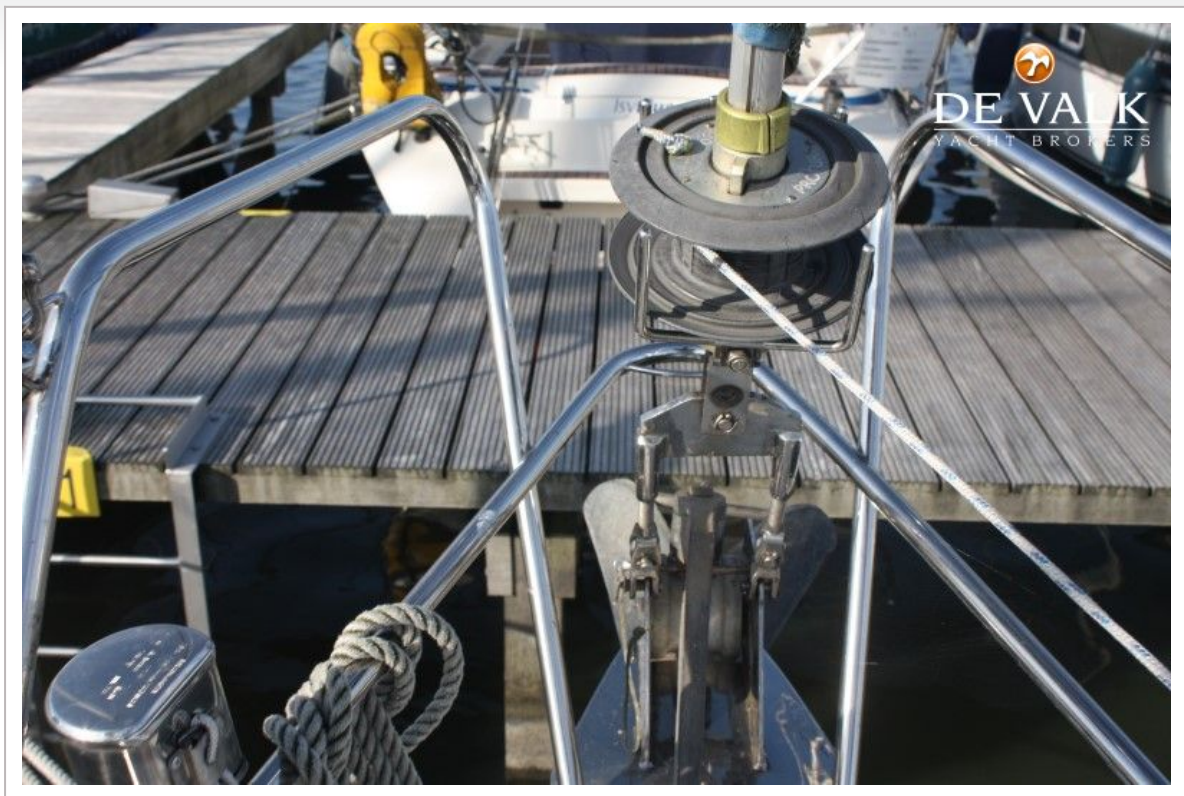
CONTEST 38S



CONTEST 38S



CONTEST 38S



CONTEST 38S



CONTEST 38S



CONTEST 38S



CONTEST 38S



CONTEST 38S



CONTEST 38S



CONTEST 38S



CONTEST 38S

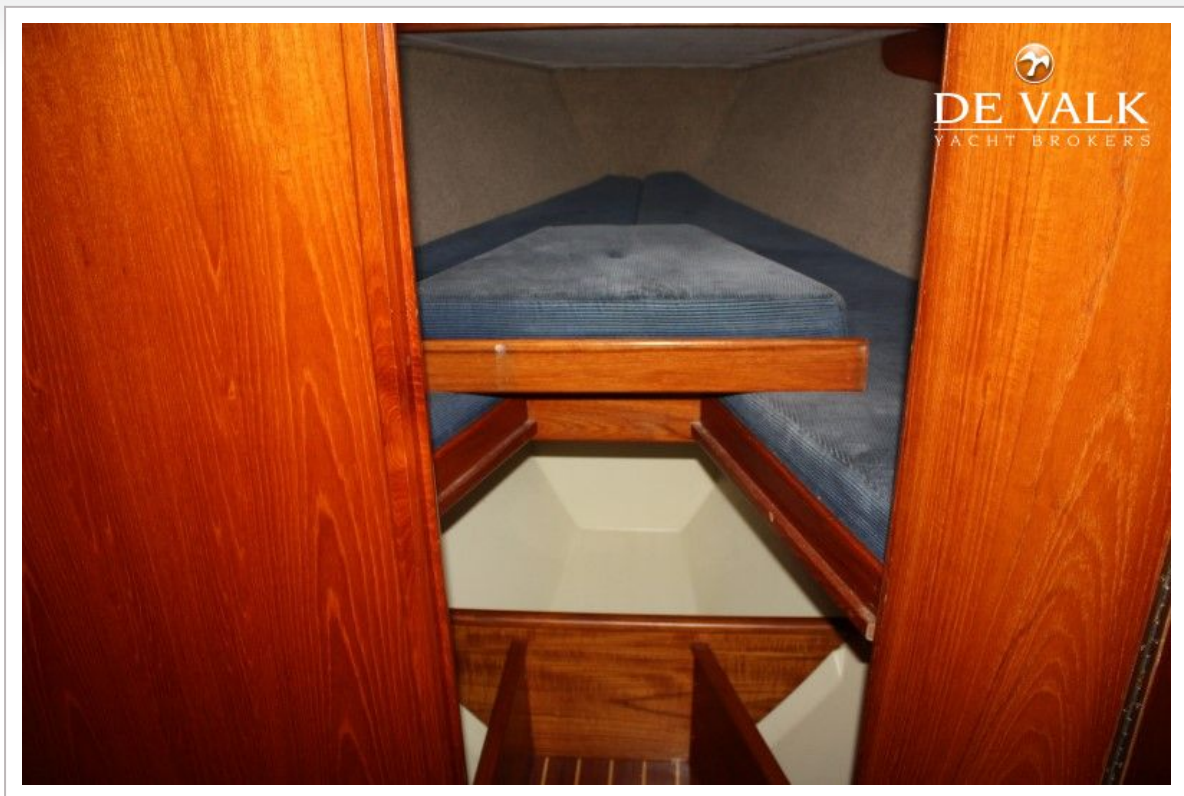


CONTEST 38S

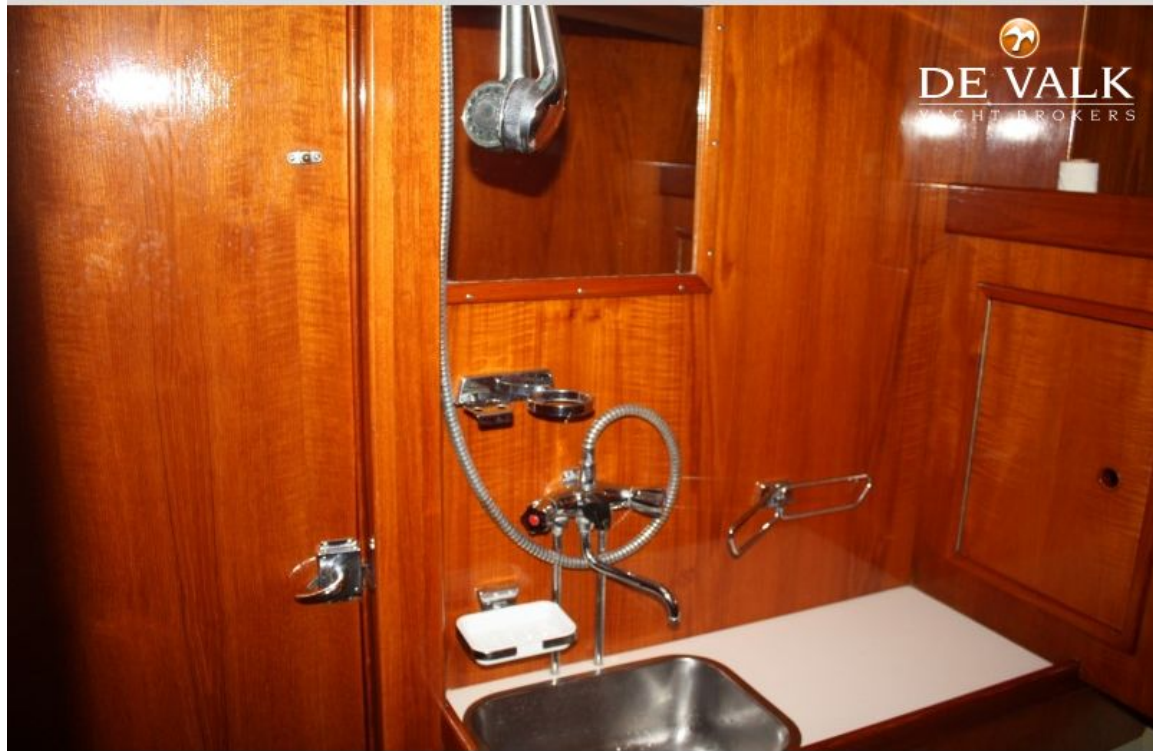


CONTEST 38S



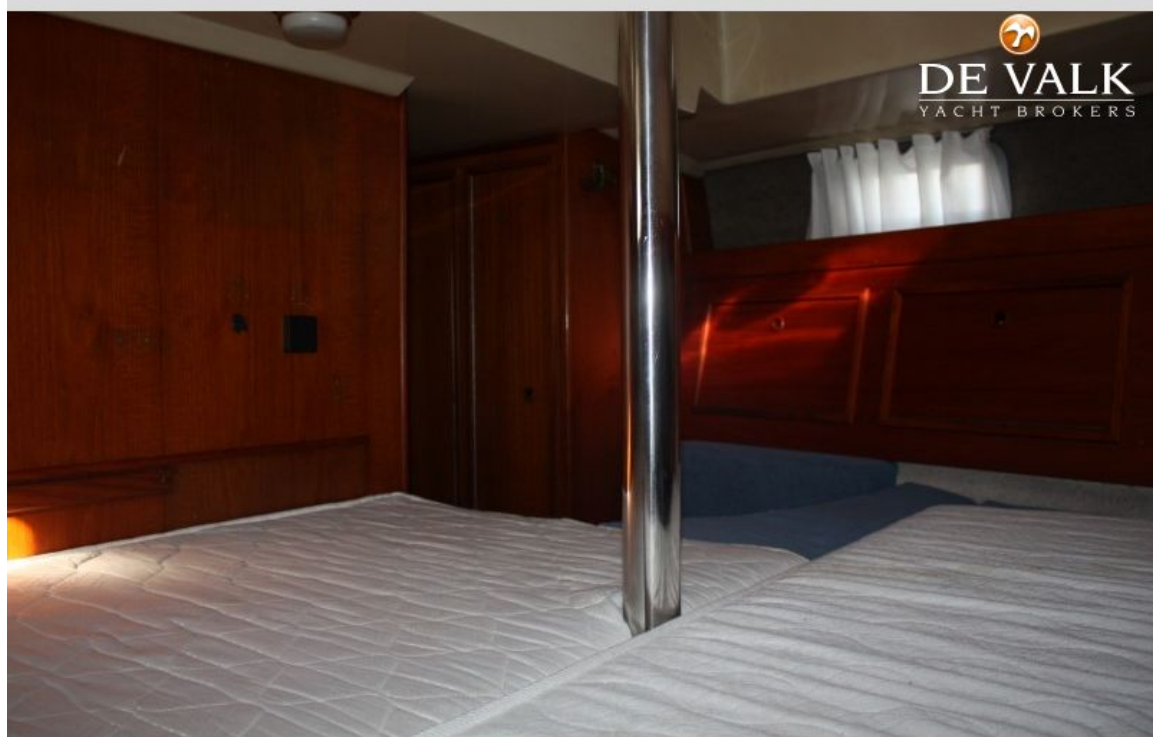


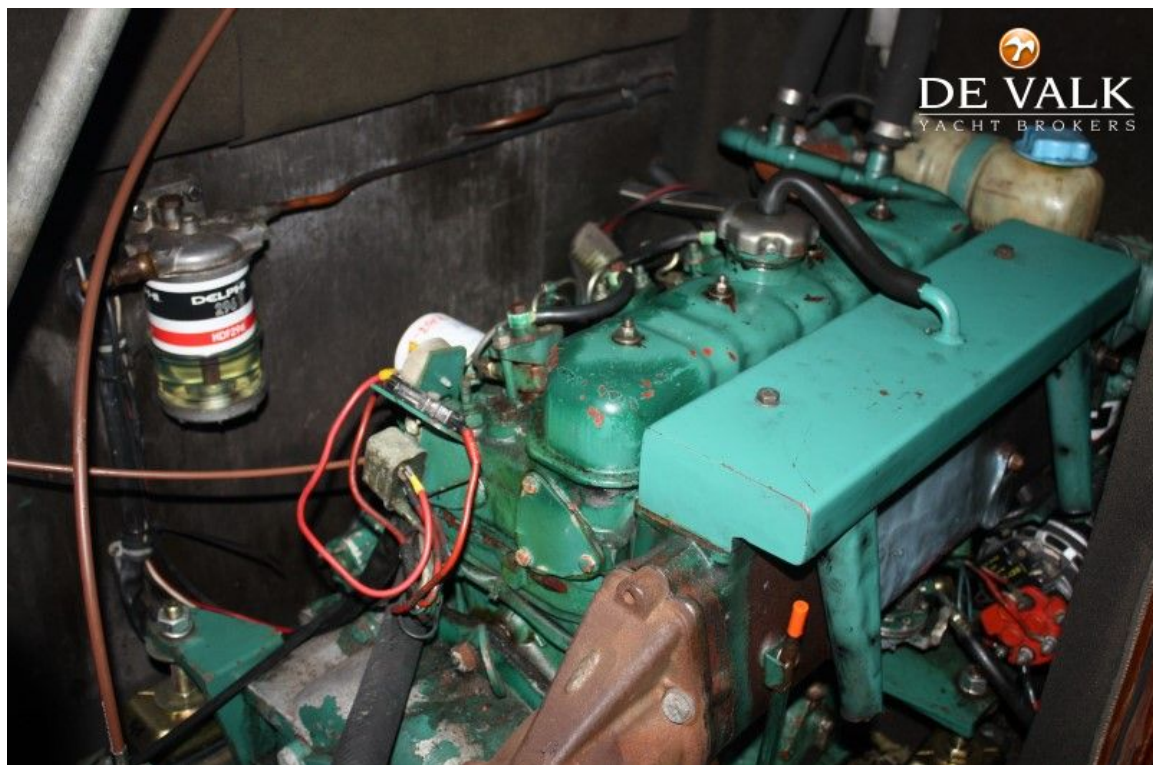
CONTEST 38S



CONTEST 38S

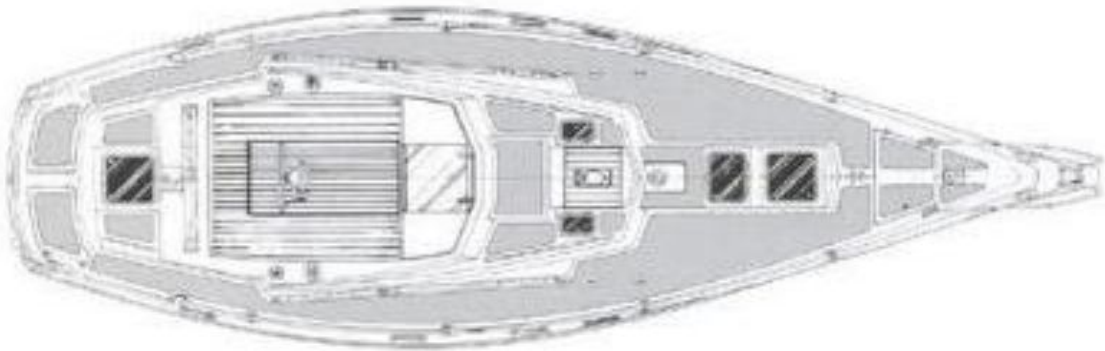









DE VALK
YACHT BROKERS




DE VALK
YACHT BROKERS

