



DE VALK
YACHT BROKERS



NAUTICAT 39



DE VALK
YACHT BROKERS

BROKER'S COMMENTS

The Nauticat 39 has all the comfort features of a motorsailer, but the sailing characteristics of a modern sailing yacht. The safe, deep and ergonomic cockpit with the integrated bathing platform makes the handling easy also in the roughest conditions. The all-teak interior design follows the Nauticat traditions of cosyness, warmth and high quality woodwork.

Sander van der Voorn

SPECIFICATIONS

Dimensions	11.85 x 3.50 x 1.83 (m)	Builder	Siltala Yachts Oy
Built	1997	Cabins	3
Material	GRP	Berths	5
Engine(s)	1 x Yanmar 4JH2-E diesel	Hp/Kw	50.00 (hp), 36.75 (kw)
Asking price	sold (VAT)	Lying	at sales office

CONTACT

Sales office	De Valk Monnickendam	Telephone	+31 299 65 63 50
Address	Hoogedijk 6 1145 PM Katwoude The Netherlands	E-mail	monnickendam@devalk.nl

DISCLAIMER

These particulars are given in good faith as supplied but cannot be guaranteed.



GENERAL

Model	NAUSICAT 39
Type	sailing yacht
LOA (m)	11,85
LWL (m)	9,80
Beam (m)	3,50
Draft (m)	1,83
Air draft (m)	16,80
Headroom (m)	1,92
Year built	1997
Builder	Siltala Yachts Oy
Country	Finland
Designer	Kaj Gustafsson
Displacement (t)	8
Ballast (tonnes)	lead 2,7
CE norm	A
Hull material	GRP
Hull colour	red
Hull shape	roundbilged
Keel type	bulb keel
Superstructure material	GRP
Rubbing strake	rubber
Deck material	GRP
Deck finish	teak
Superstructure deck finish	moulded in
Cockpit deck finish	teak
Dorades	yes
Window frame	aluminum
Window material	glass
Fuel tank (litre)	stainless steel 2x 175
Freshwater tank (litre)	stainless steel 2x 250



Greywater tank (litre)	yes
Wheel steering	hydraulic Inside
Outside helm position	Whitlock Premiere
Emergency tiller	yes

ACCOMMODATION

Cabins	3
Berths	5
Interior	teak
Deck saloon	yes
Headroom saloon (m)	1,92
Heating	diesel ducted hot air Eberspacher
Chart table	yes
Dinette	yes
Galley	yes
Countertop	plastic
Sink	stainless steel
Cooker	calor gas Eno
Oven	Eno
Fridge	yes
Hot water system	220V + engine Iso Temp 20 liter
Water pressure system	electrical
Owners cabin	double bed
Bed length (m)	1,95 x 1,75
Wardrobe	yes
Bathroom	en suite
Toilet	yes
Toilet system	manual Jabsco
Wash basin	yes
Shower	yes
Guest cabin 1	v-bed



Wardrobe	yes
Bathroom	yes
Toilet	yes
Toilet system	manual Jabsco
Guest cabin 2	single bed One meter wide
Wardrobe	yes

MACHINERY

No of engines	1
Make	Yanmar
Type	4JH2-E
HP	50,00
kW	36,75
Fuel	diesel
Year installed	1997
Maximum speed (kn)	8
Cruising speed (kn)	7
Range (nm)	500
Engine hours	1478,5
Engine cooling system	freshwater heat exchanger
Drive	shaft
Engine controls	Single lever Morse
Gearbox	mechanical KM4A
Bowthruster	electric Side Power 4 HP
Propeller type	fixed
Propeller shaft material	steel Acidproof
Shaft lubrication	grease
Manual bilge pump	yes
Electric bilge pump	yes
Start battery	1x 72 ah
Service battery	2x 185 ah



Battery charger/inverter	Ellego oy Powertec tva 12/40
Shorepower	yes

NAVIGATION

Compass	Suunto
Depth sounder	2x Autohelm ST50+ Multi (display broken)
Log	2x Autohelm ST50+ Multi
Windset	Autohelm ST50 + (must be checked)
VHF	Shipmate RS 8300
Autopilot	Autohelm ST6000
Radar	Raytheon R10 (not working)
GPS	Raytheon NAV398
EPIRB	Mini B2
Extra info	Sailor SP Radio

EQUIPMENT

Fixed windscreen	yes
Sprayhood	yes
Cockpit table	yes
Bathing platform	yes
Boarding ladder	yes
Gangway	yes
Deck shower	Hot/cold water
Anchor	yes
Anchor chain	yes
Windlass	electrical Lofrans
Sea railing	yes
Pushpit	yes
Pulpit	S/S
Wiper	2x
Window ventilator	yes



Radar reflector	yes
Radio-cd player	Only Radio
Cockpit speakers	yes
Fire extinguisher	yes
Extra info	Anchorwinch must be checked.

RIGGING

Rigging	sloop
Brand mast	Seldén
Spreaders	Double set
Mainsail	yes
Stoway mast	yes
Genoa	yes
Reefing System	yes
Backstay adjuster	yes
Boomvang	yes
Primary sheet winch	2x Lewmar 48
Secondary sheet winch	2x Lewmar 40
Reefing winch	1x Lewmar 30
Jockey-pole	yes
Extra info	2x Andersen 16ST single speed winch on mast.



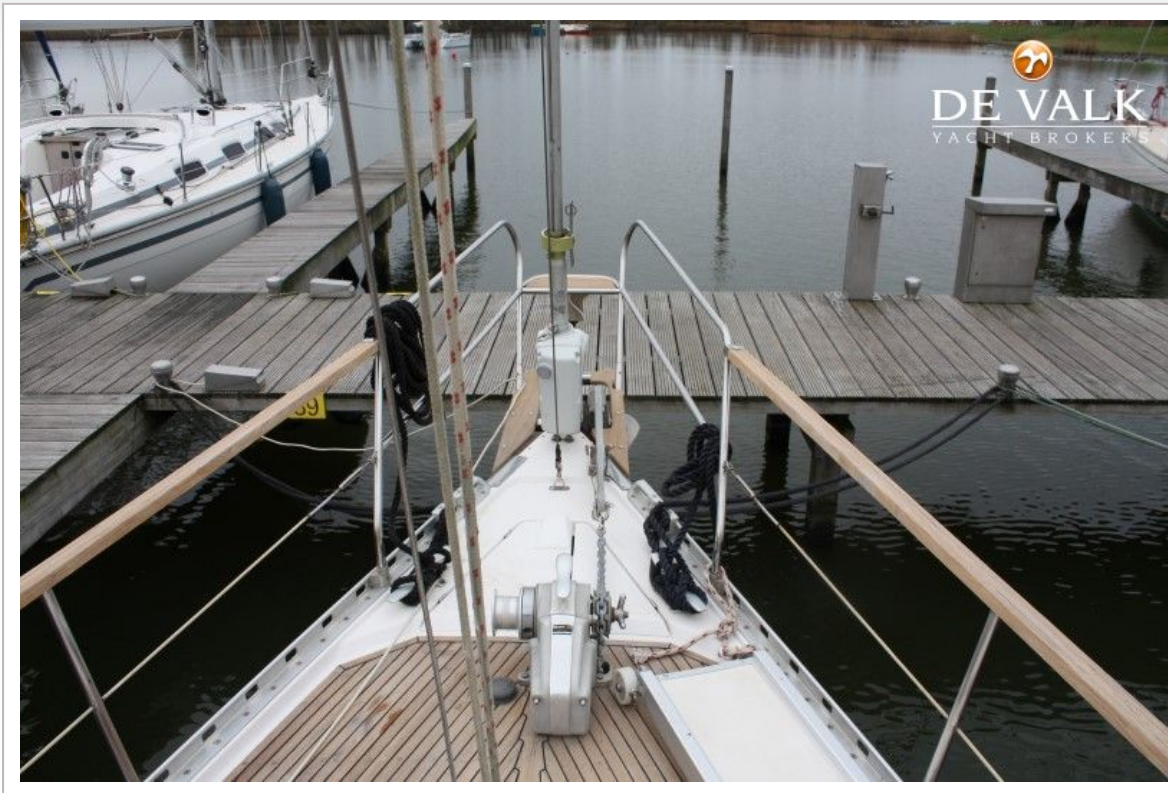
NAUTICAT 39



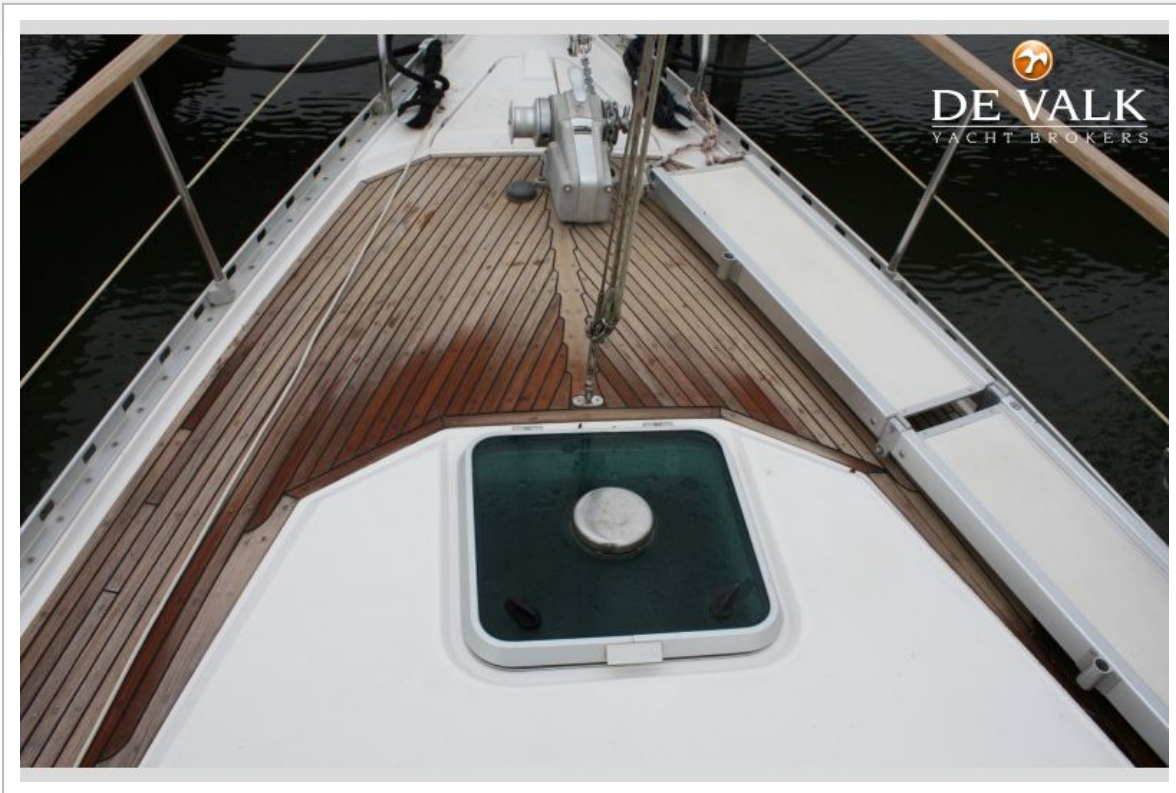
NAUTICAT 39



NAUTICAT 39



NAUTICAT 39

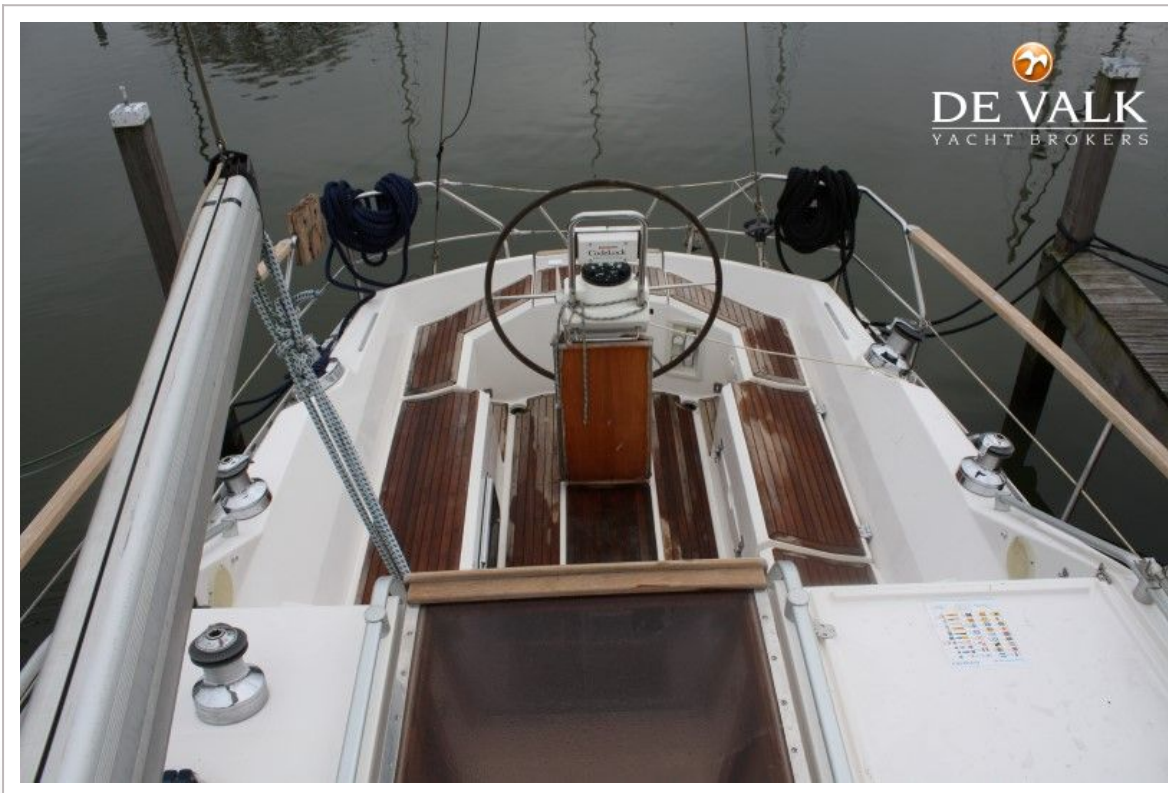


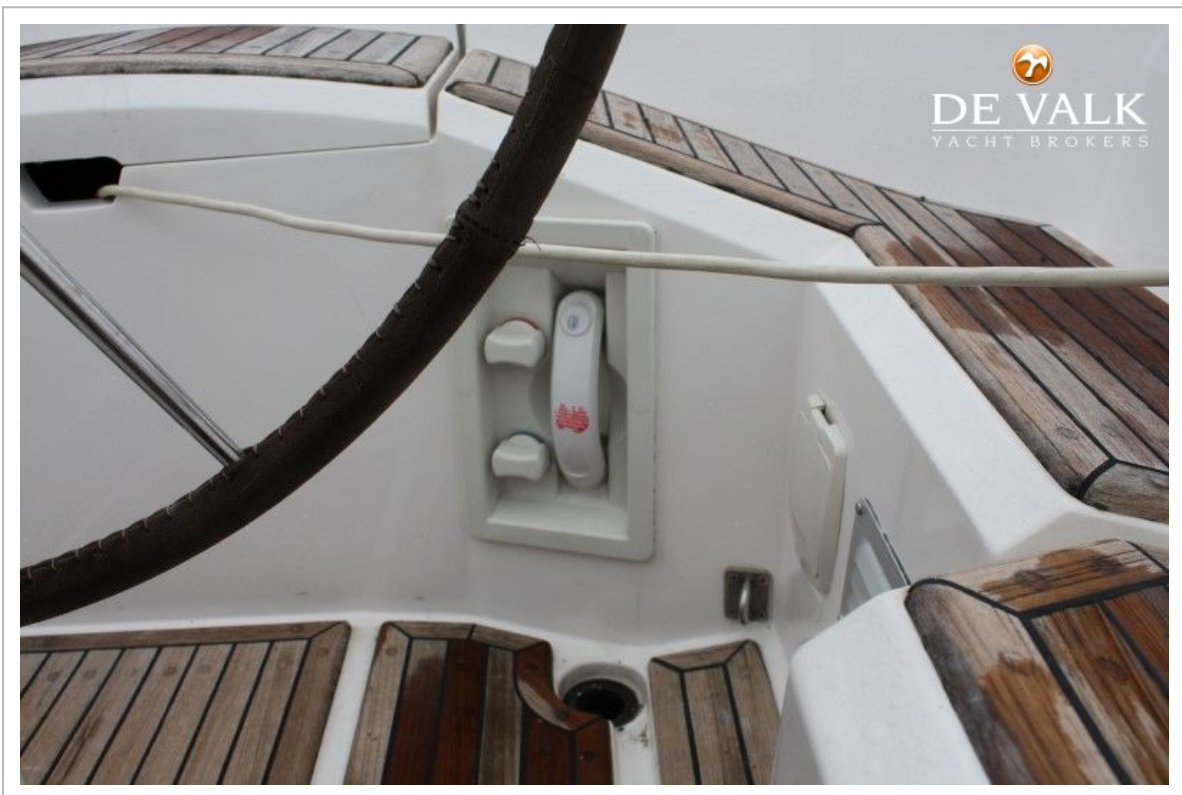
NAUTICAT 39





NAUTICAT 39





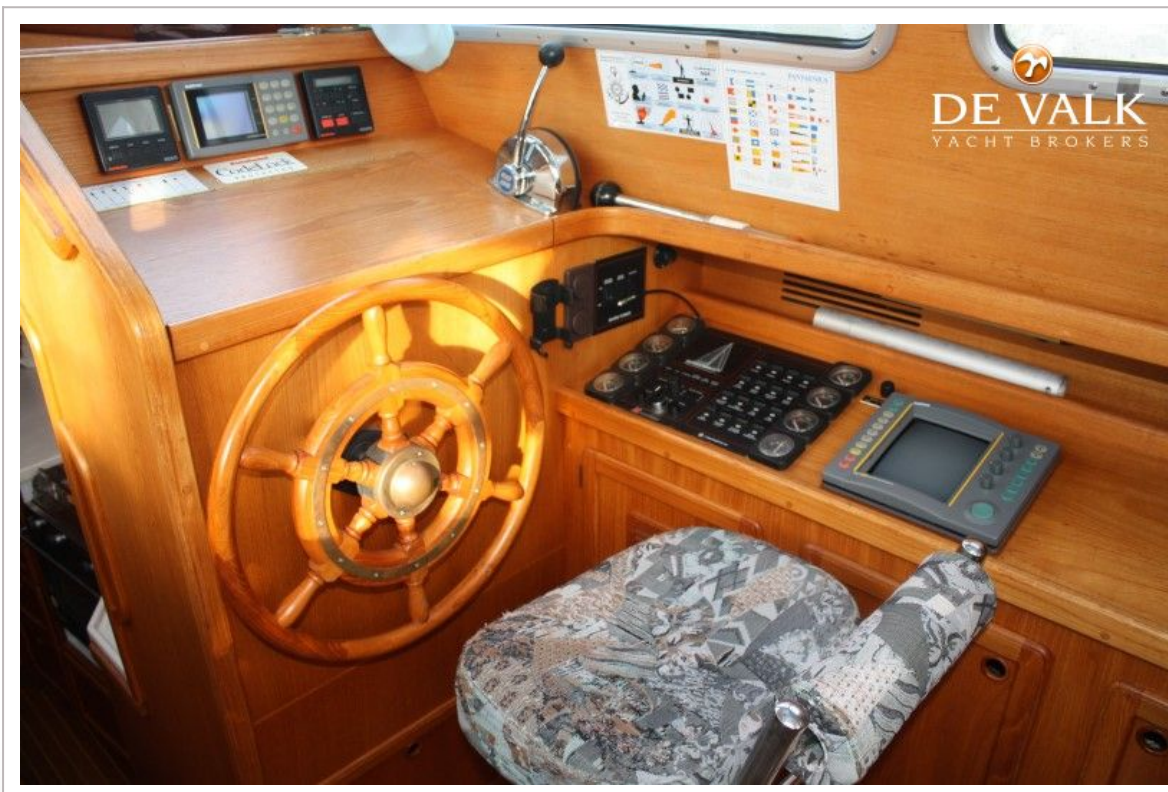




NAUTICAT 39



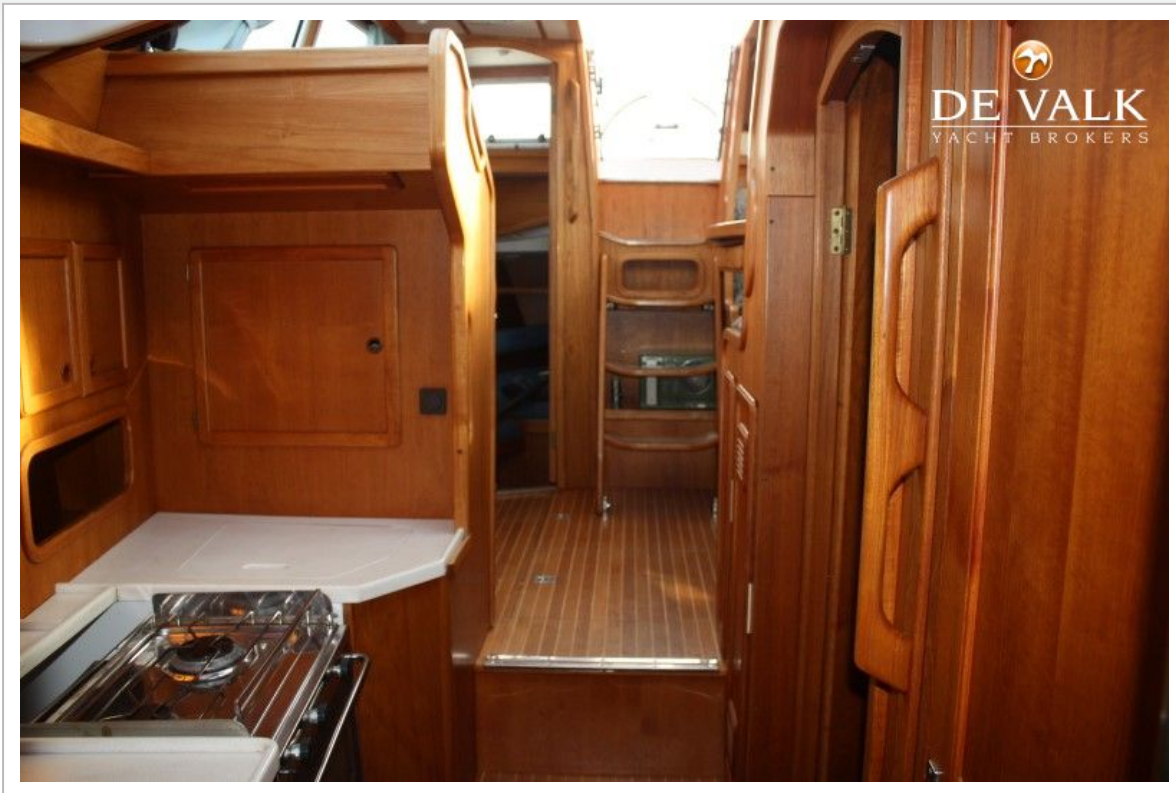
NAUTICAT 39



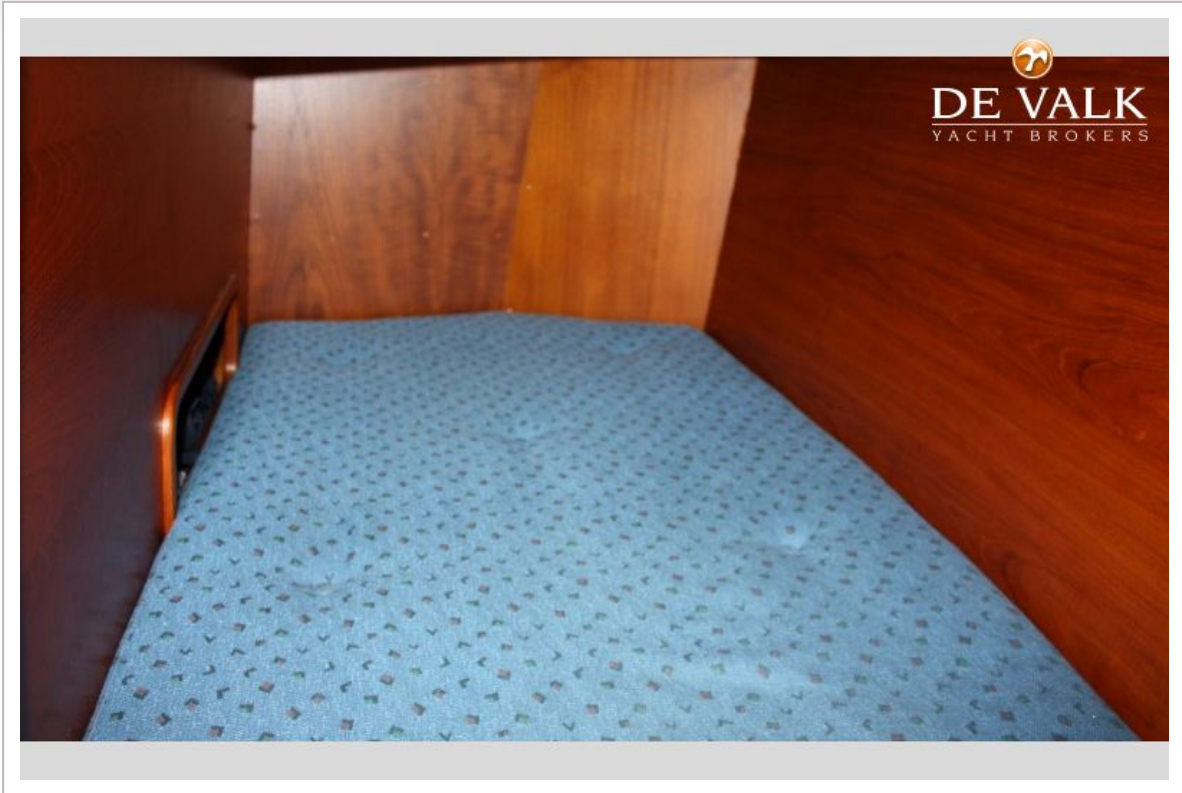
NAUTICAT 39



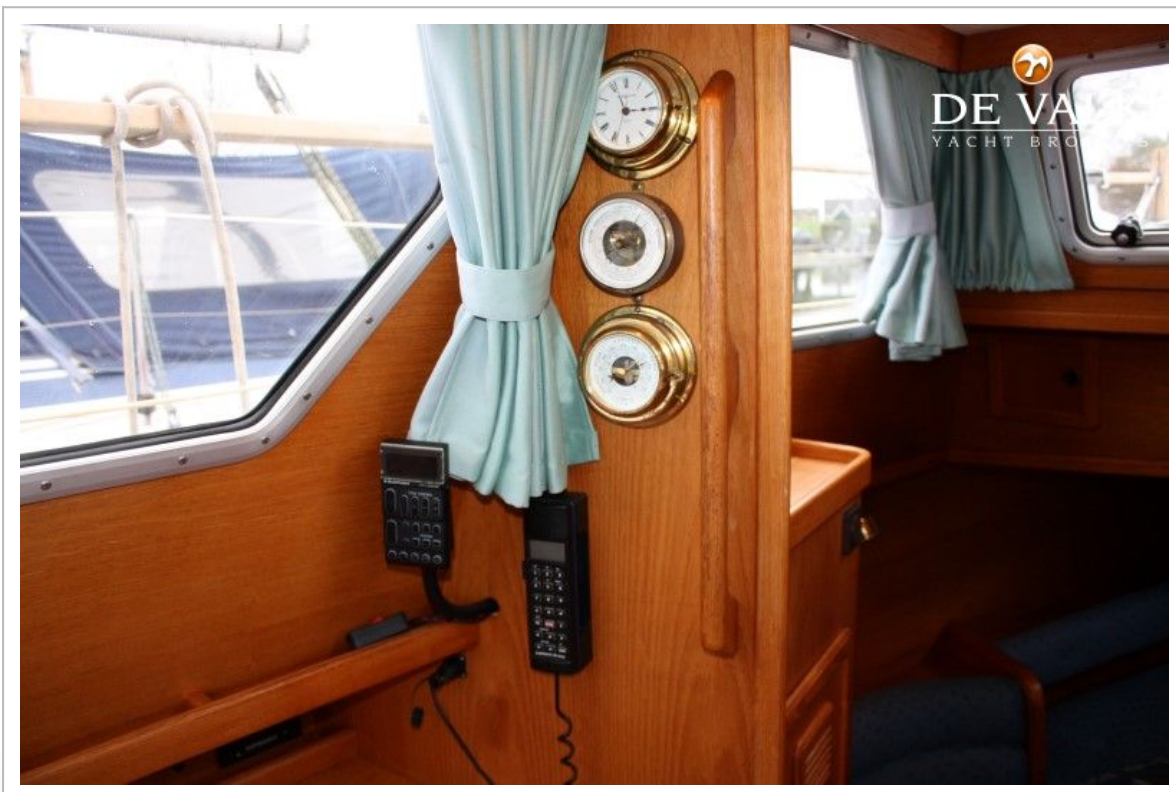
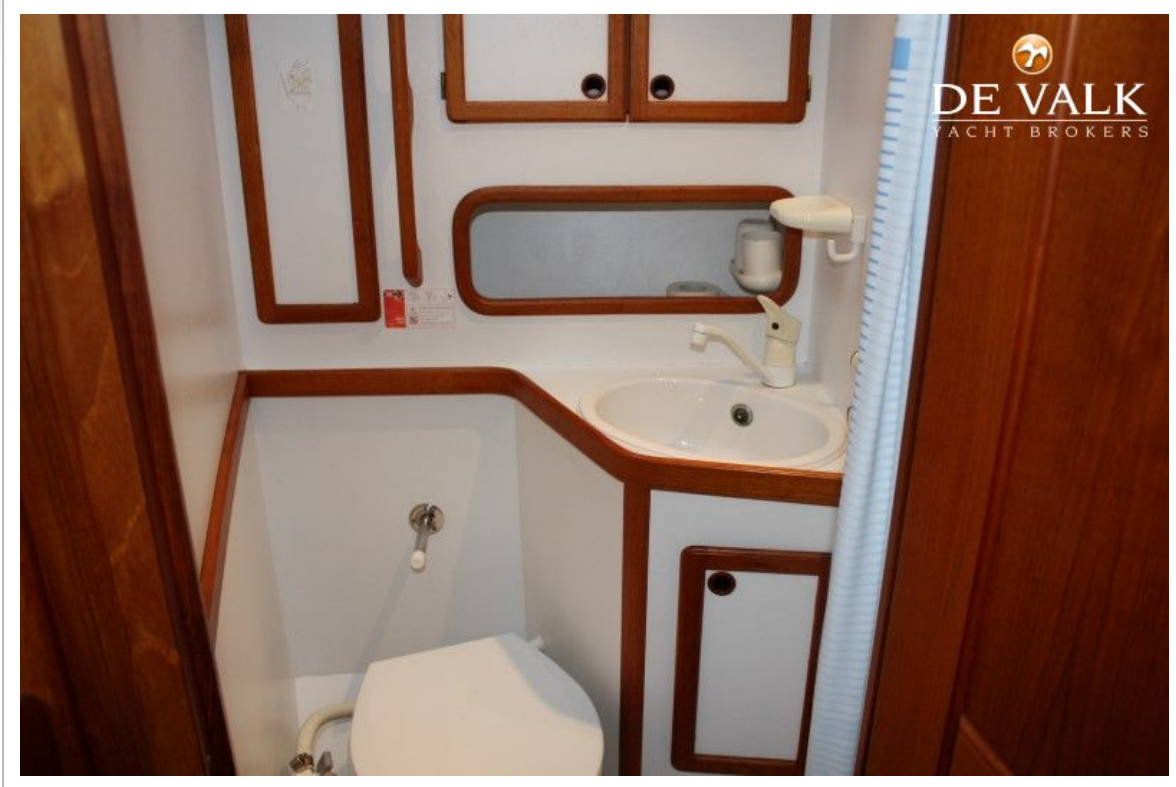
NAUTICAT 39



NAUTICAT 39







NAUTICAT 39

