



DE VALK
YACHT BROKERS



MY SILA INUA



DE VALK
YACHT BROKERS

BROKERAGE | CHARTER | BERTHS | FINANCE | INSURANCE | YACHT MANAGEMENT

BROKER'S COMMENTS

"Sila Inua" is an ice strength prototype ship dedicated to Arctic observation. The three main strategic keys are its ability to be fully maneuverable in very shallow remote waters, its autonomy and its low running cost. Built for wintering autonomously, "Sila Inua" has been designed as a simple and efficient year-long observation platform capable of resisting Arctic ice pressure if necessary. Conceived and run by passionate travelers, Sila Inua's main goal is to be an environmentally friendly educational tool about the most remote places on our planet.

Pieter Bosma

SPECIFICATIONS

Dimensions	16.00 x 5.00 x 1,30 / 1.45 (m)	Builder	Meta CN
Built	2011	Cabins	4
Material	Aluminium	Berths	10
Engine(s)	2 x Deutz Marine BF4M1013M diesel	Hp/Kw	2 x 0.00 (hp), 0.00 (kw)
Asking price	sold (VAT)	Lying	at sales office

CONTACT

Sales office	De Valk Monnickendam B.V.	Telephone	+31 (0)299 65 63 50
Address	Hoogedijk 6 1145 PM Katwoude NL	E-mail	monnickendam@devalk.nl

DISCLAIMER

These particulars are given in good faith as supplied but cannot be guaranteed.



GENERAL

Model	MY SILA INUA
Type	motor yacht
LOA (m)	16,00
LWL (m)	14,60
Beam (m)	5,00
Draft (m)	1,45
Draft min (m)	1,30
Headroom (m)	2,00
Year built	2011
Builder	Meta CN
Country	France
Designer	Joubert Nivelt
Displacement (t)	31,38
Hull material	aluminium
Hull colour	orange
Hull thickness (mm)	Bottom: 20 mm, sides: 15 mm
Hull shape	Flat bottom with skegs
Superstructure material	aluminium
Superstructure (mm)	10 and 8 mm
Deck plate thickness (mm)	10 mm
Deck material	aluminium
Deck finish	anti-slip paint
Antifouling (year)	2014
Window frame	aluminium
Window material	double glazing Thermal break
Insulation	High level, multi materials
Fuel tank (litre)	aluminium Total 8.900 litres in 5 tanks
Level indicator (fuel tank)	NMEA 2000 senders
Fuel daytank (litre)	aluminium 2.000 litres in two tanks
Level indicator (daytank)	NMEA 2000 senders



Freshwater tank (litre)	stainless steel 1.100 litres in two tanks
Level indicator (freshwater)	Visual level
Blackwater tank (litre)	polyethylene 40 litres - available, not installed
Level indicator (blackwater)	Sender possible
Greywater tank (litre)	stainless steel 110 litres
Level indicator (greywater)	Visual level
Wheel steering	hydraulic
More info on hull	Watertight bulkheads: 3. Watertight separation in between hull and superstructure.
Extra info	Airdraft: max. 8,80 m, min. 6,30 m. Fuel system: 7 tanks ballastable, filtration before and after the day tanks, filtration in-between tanks, full separation of each tank. Fuel control: instant consumption, average consumption indicators.

ACCOMMODATION

Cabins	4
Berths	10
Interior	mahogany African Mahogany, Brazilian yellowheart, bamboo
Floor	parquett
Saloon	fixed table for 8 persons + fixed table for 4.
Headroom saloon (m)	2,00
Heating	Central hydronic - for ext. down to -40C
Heating 2	Diesel stove with backup
Galley	yes
Countertop	stainless steel
Sink	stainless steel 1x double + 1x single
Cooker	Induction
Oven	Multimode electric oven
Owners cabin	1 large + one child berth
Bed length (m)	Wide 1,40 m
Wardrobe	Mult shelves + hangers
Bathroom	Shared



Toilet	yes
Toilet system	electric
Shower	yes
Guest cabin 1	twin single
Bed length (m)	Wide: 2x 80 cm
Wardrobe	Multi shelves and hangers
Guest cabin 2	4 single berths
Wardrobe	shelves
Guest cabin 3	single bed Captain cabin
Wardrobe	yes
Washing machine	yes
Sauna	incl. shower; fully watertight enclosure for shower and infrared sauna of steam.
Extra info	Number of cabins in owner configuration (actual): 4 for a total of 9 berths + one child berth. Possible modification for charter configuration: up to 6 cabins for a total of 13 berths. Toilet room: sinks water recycling system, freeze proof. Peak storage with watertight bulkhead, 6m3. Rear storage with watertight bulkhead, 12m3.

MACHINERY

No of engines	2
Make	Deutz Marine
Type	BF4M1013M
Fuel	diesel
Year installed	2011
Maximum speed (kn)	11
Cruising speed (kn)	8,6
Consumption (l/hr)	14
Range (nm)	8500
Engine cooling system	closed keelcooling
Drive	shaft
Engine controls	Moenninghoff Blue Line flex coupling



Gearbox	hydraulic ZF63
Propeller type	fixed Low noise
Propeller blades	5
Batteries	Main battery system: 24V 1.260 Ah @ C10 in 2V elements, OpzV Din 407440
Start battery	Engine batteries: 24V 110 Ah @C10, gel, tubular
Inverter	115V 60 Hz 3.5 kW Studer, 230V 50 Hz 3.5 kW Studer with smart boost. Total available when engines are running: 7 kW in 115V, 7,5 kW in 230V single phase.
Extra info	Drive: oil bath, carbon steel 50 mm. Engine alternators: 24V Bosch 63A. Main bank alternators Dynawatt system; 230V 4kW and 115V 3.5 kW. Fuel flow sensor: Maretron FFM100 Nmea 2000 fuel consumption analyser. Propeller access: access to survey and cleaning from inside the boat through dedicated manhole.

NAVIGATION

Compass	yes
Electric compass	yes
Depth sounder	1x NMEA 2000 smart sensor, down to 230 m, sea temperature included. + Possibility of any Simrad unit working with a NSO system.
VHF	Simrad RS25 (no Atis)
Autopilot	AP28 Simrad, hydraulic, independent of interfaced with a Simrad NSO.
Rudder angle indicator	Simrad NMEA 2000
Radar	1x Simrad 64 nm, 4", array. 1x Simrad 24 nm, 3G.
Plotter	Simrad NSO system, 19" rugged screen, remote
Weather receiver	Airmar 200WX multiinformations NMEA 2000, roll and tilt, etc.
Personal computer	Apple iMac 27" at captain cabin, world wide charting system, ship's data auto logging
AIS receiver	Simrad NAIS 300
EPIRB	Canad, GPS, coded (2013)
Personal MOB transmitter	Spot system



Camera

Engine room, rear deck

Extra info

Network wired: NMEA 2000 with all info dispatched through wire and wifi. Network wireless: Apple Airport system with Airplay for music and videos, plus NMEA data. Displays: NMEA data displays through Ipads at the engine-room and helm-station. NMEA repeaters: Maretron DS250, Offshore System 3340.

EQUIPMENT

Bathing platform

Rear diving or landing platform

Boarding ladder

One fixed ladder for diving and onshore use..

Anchor

Spade

Anchor chain

100m (12mm)

Anchor 2

Fortress

Anchor chain

30m (12mm)

Windlass

hydraulic With wireless remote

Dinghy

Valiant DR400 grey, Solar approved

Outboard

Evinrude 15 hp - 4t (2012)

TV

Samsung smart 32' netoworked with Simrad NSO repeater possibility, main cabin.

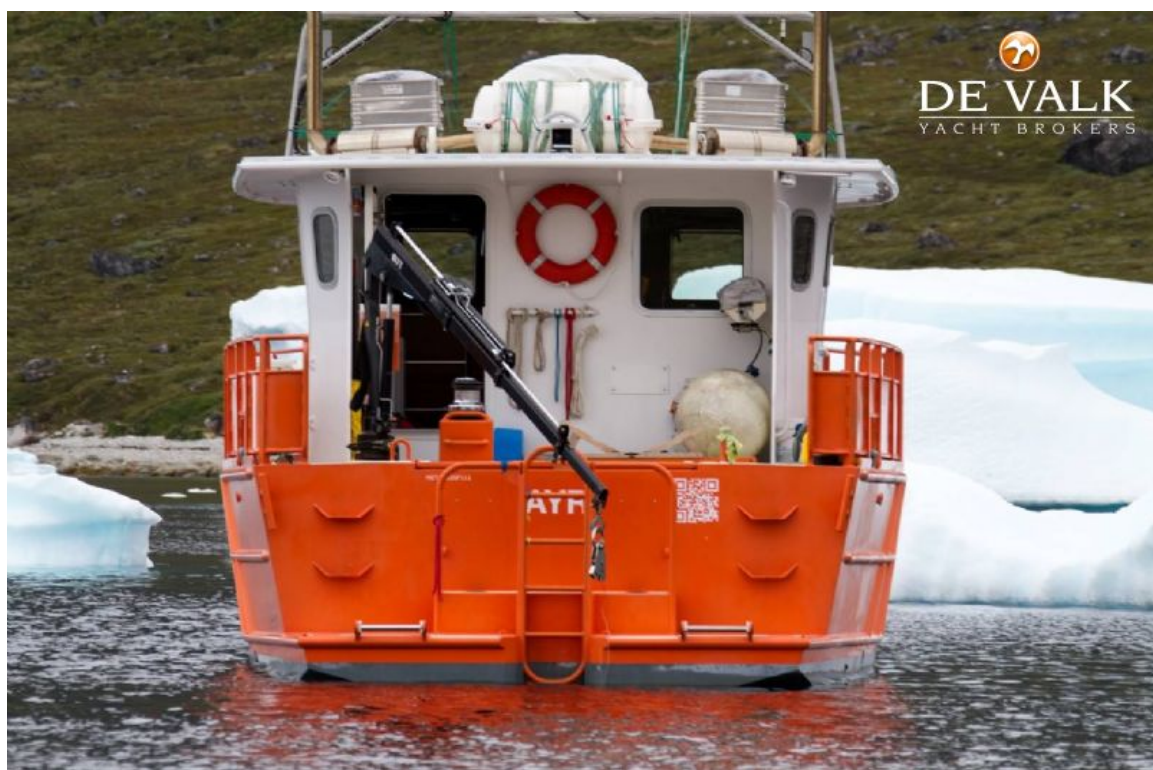
Radio-cd player

Bang & Olufsen airplay system, Bose bluetooth wireless.

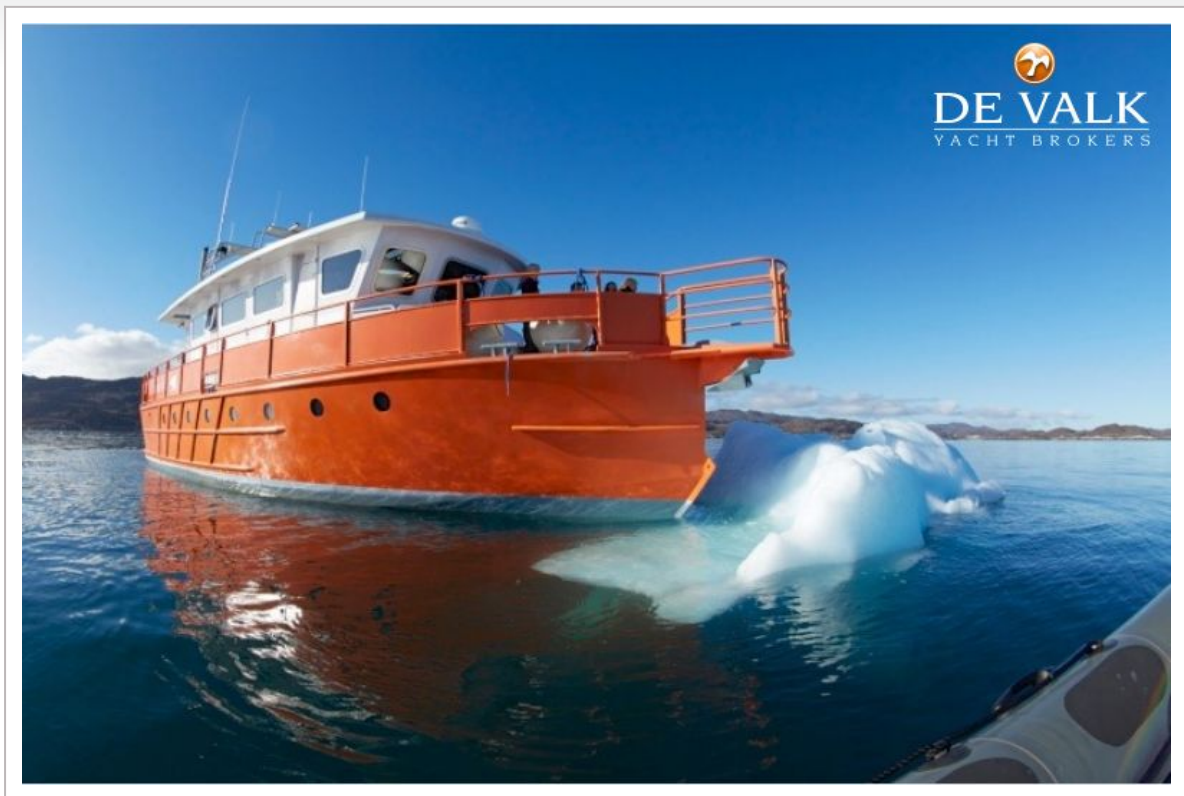
Extra info

Crane: Hiab 1.7t at the rear deck, extend to 4.2m at 385 kg.

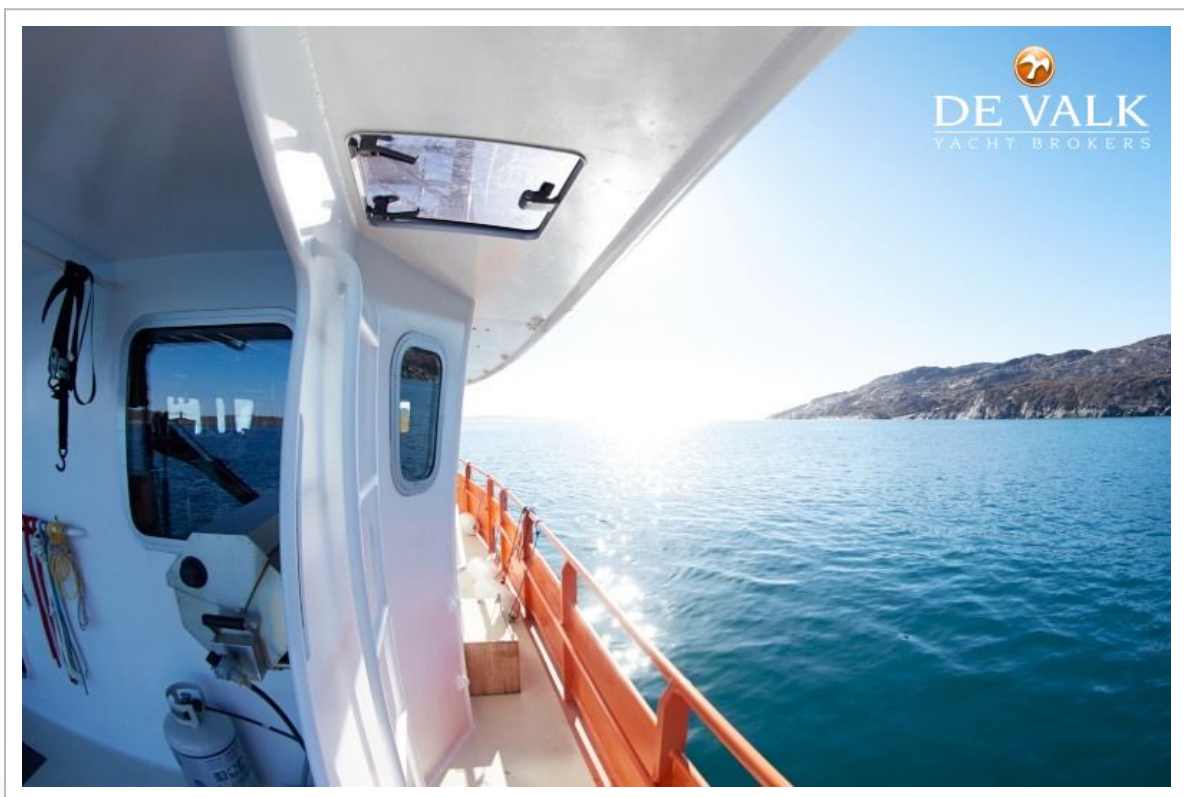
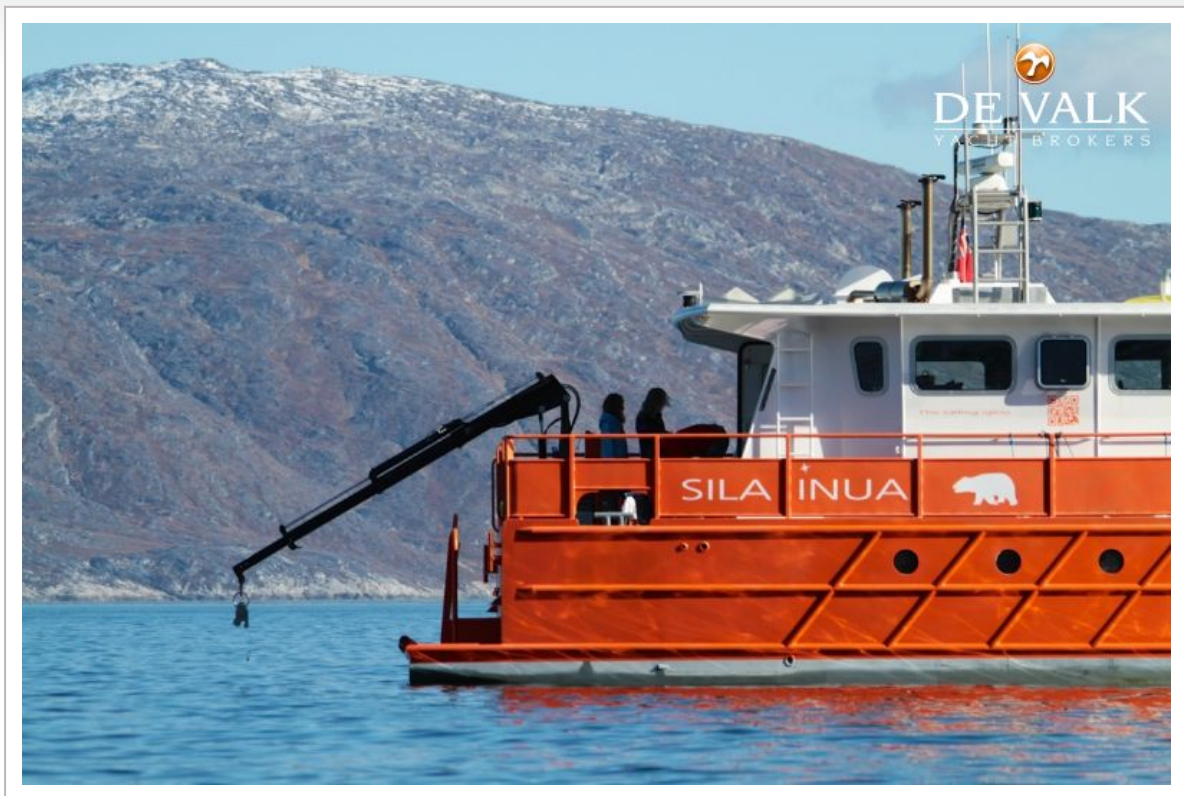


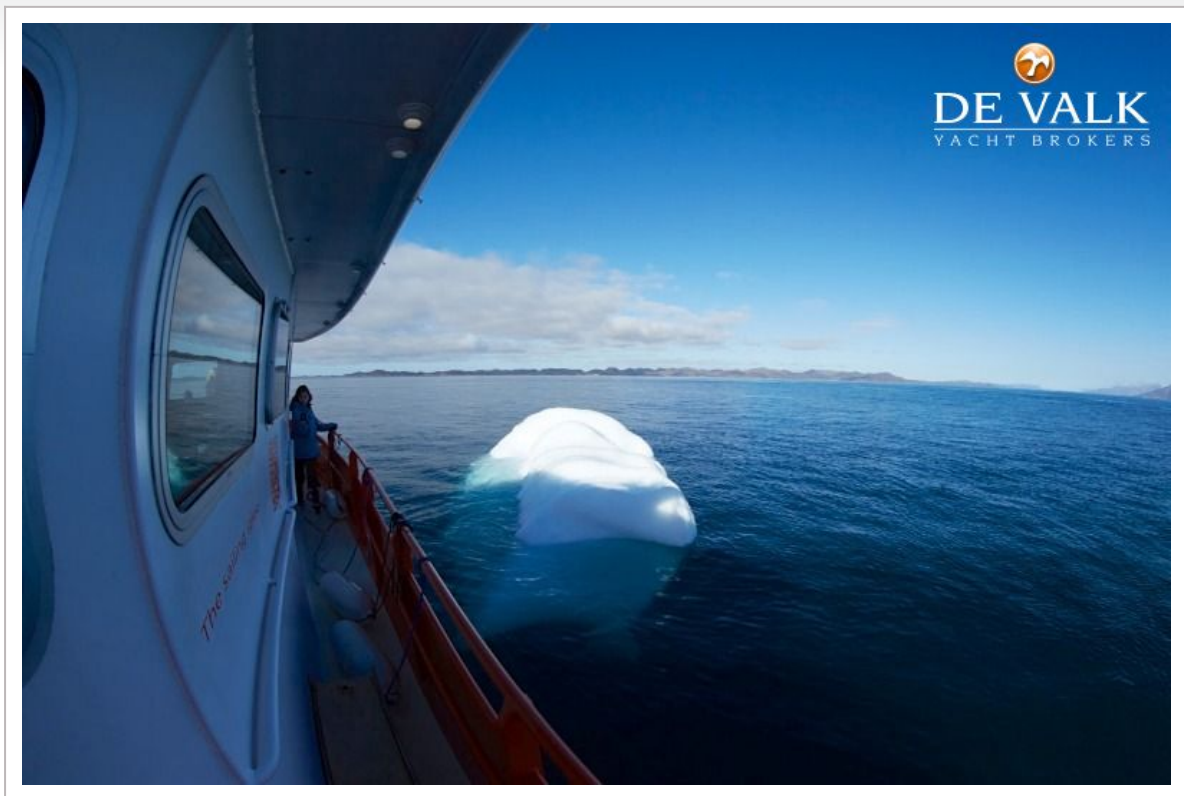


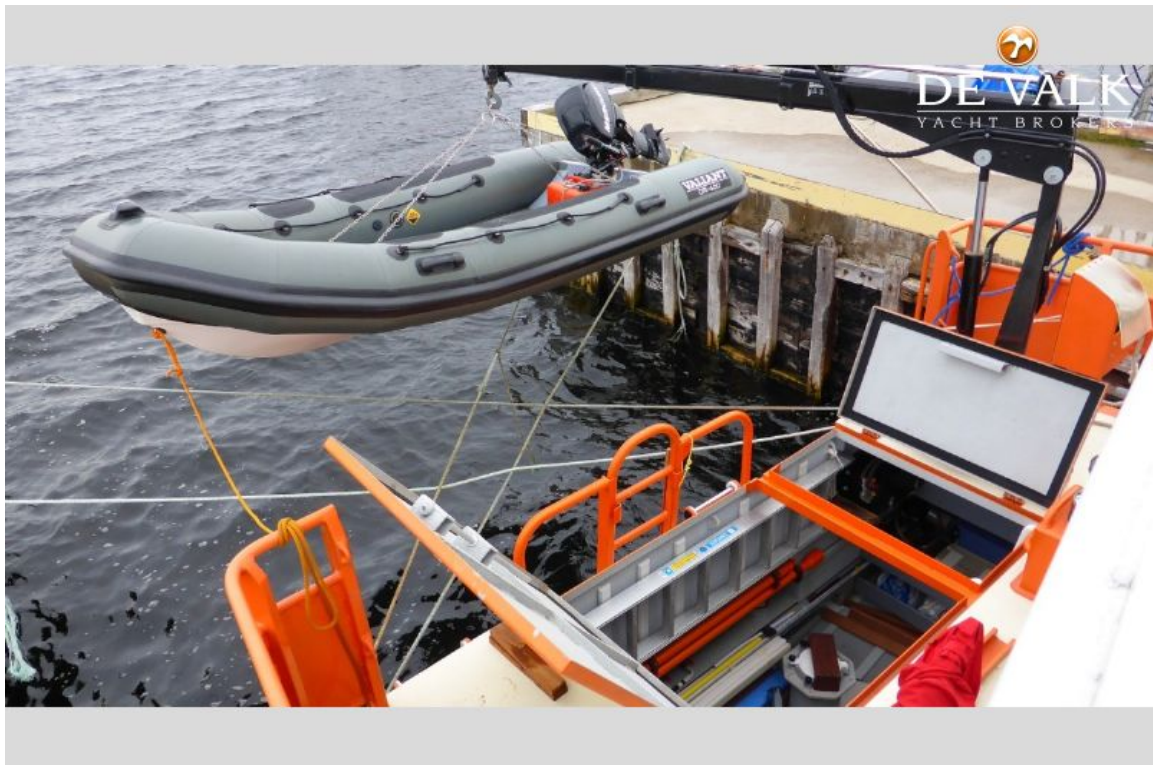




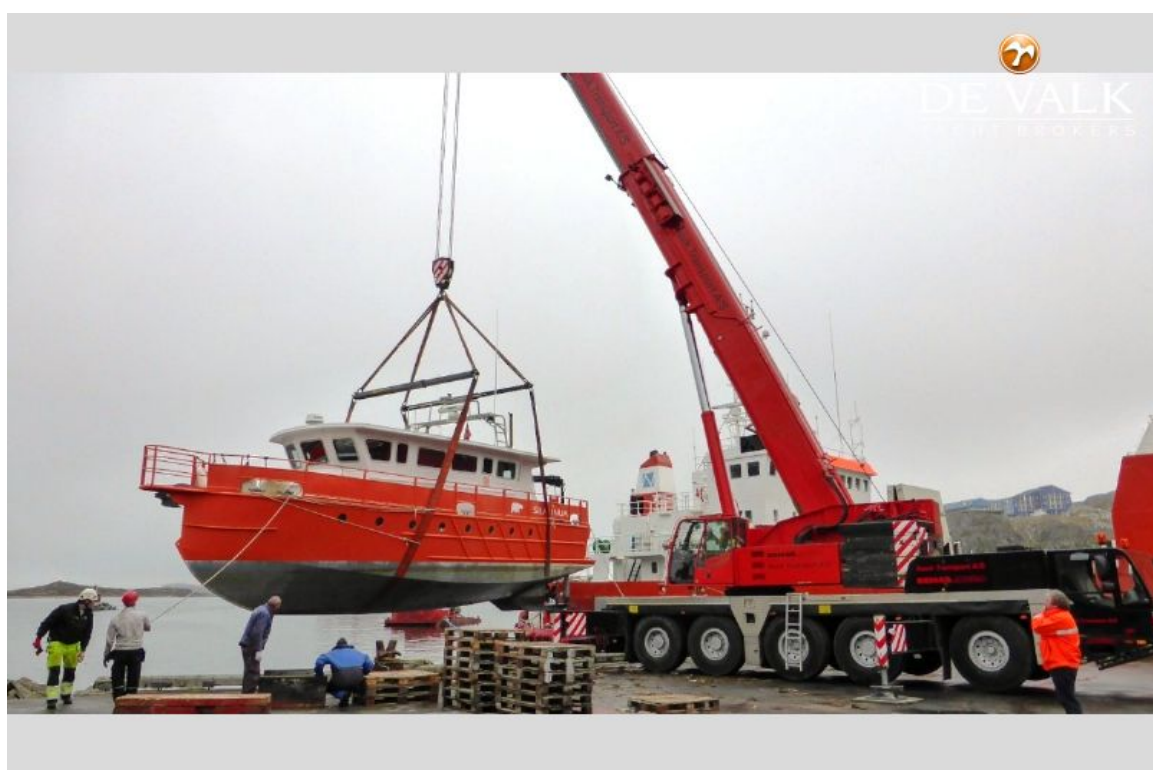
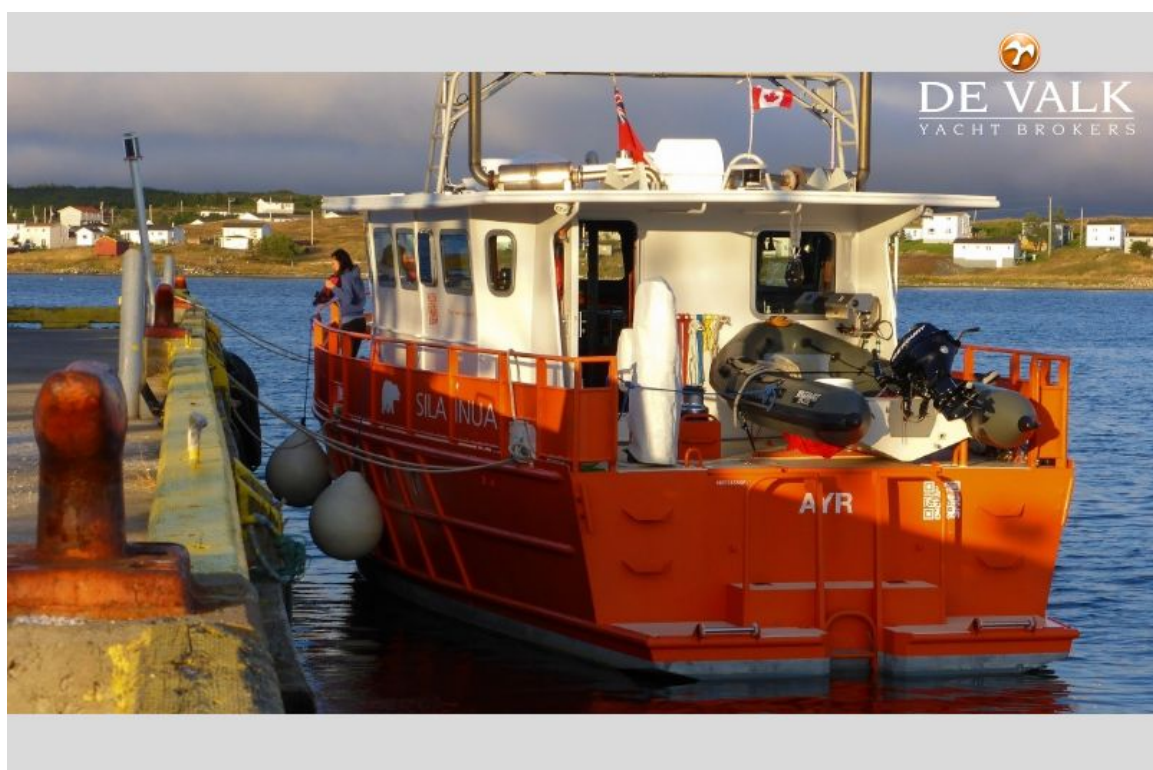
MY SILA INUA

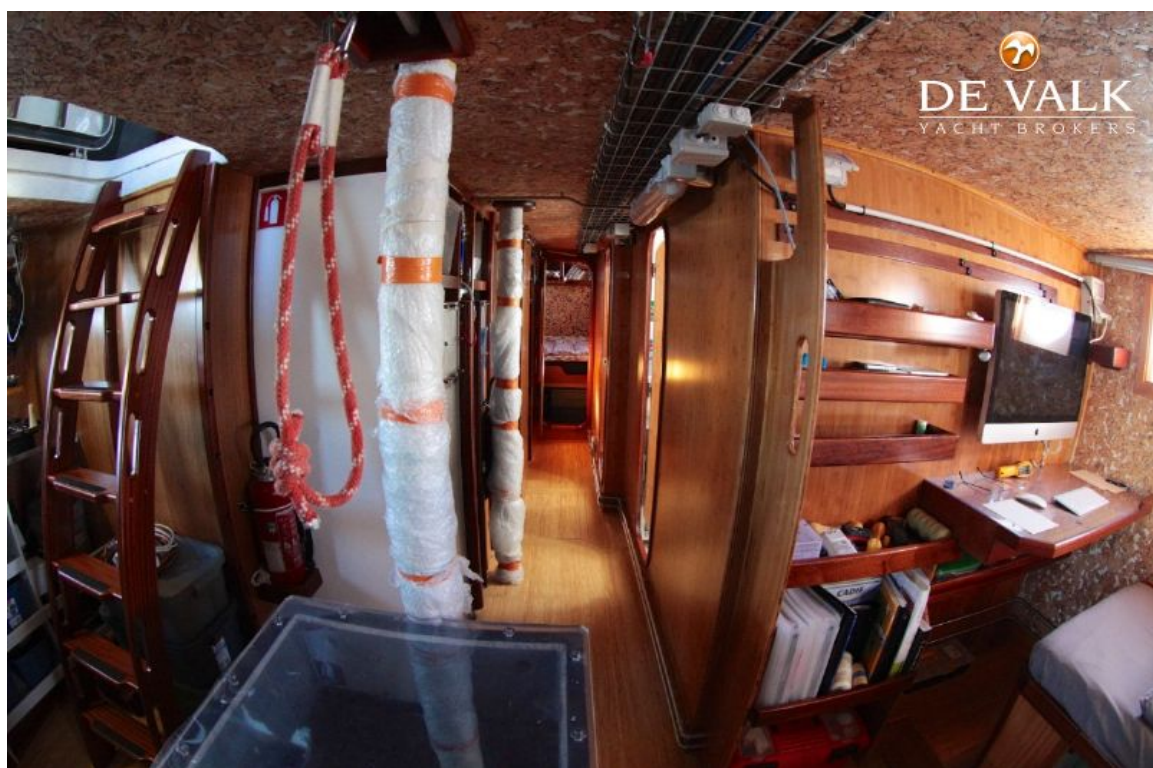
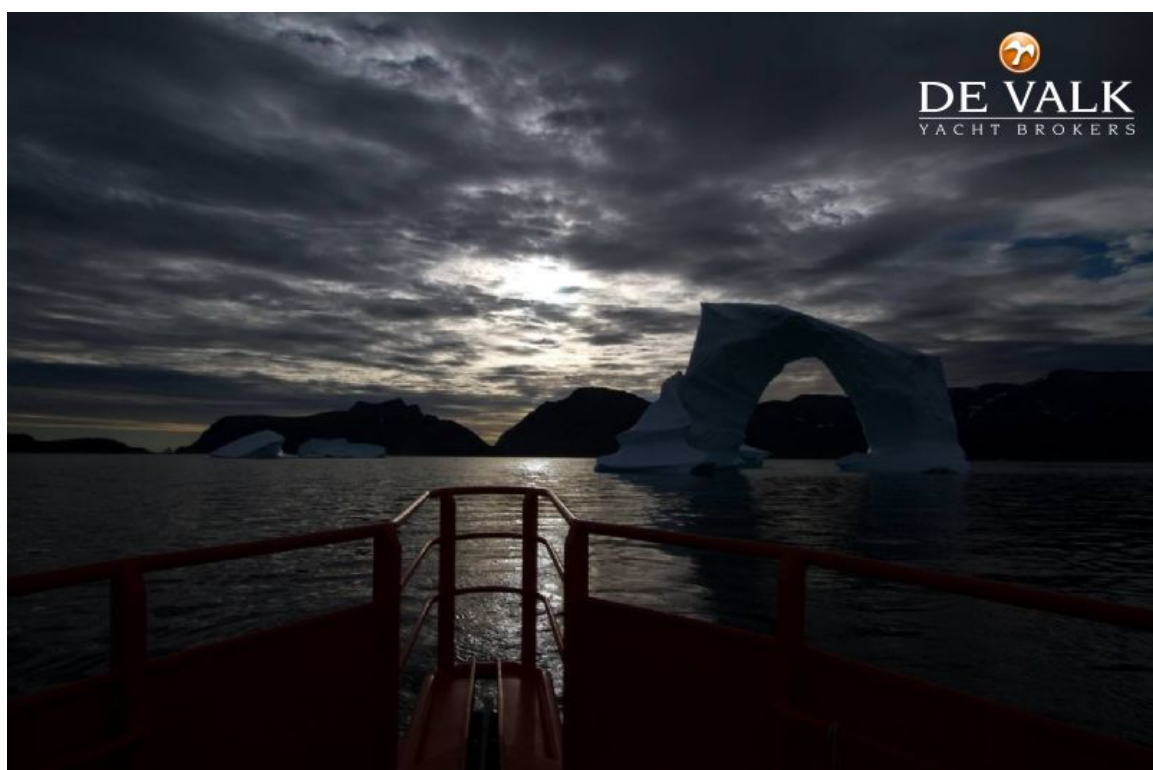


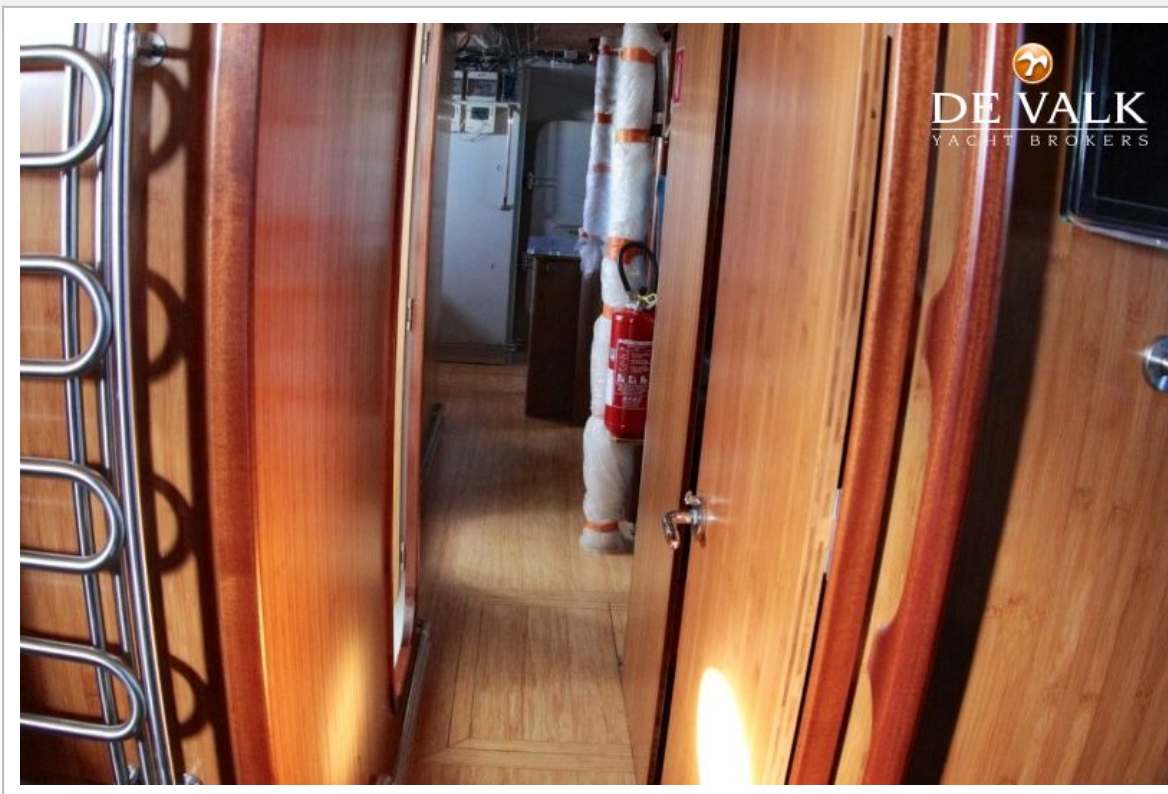




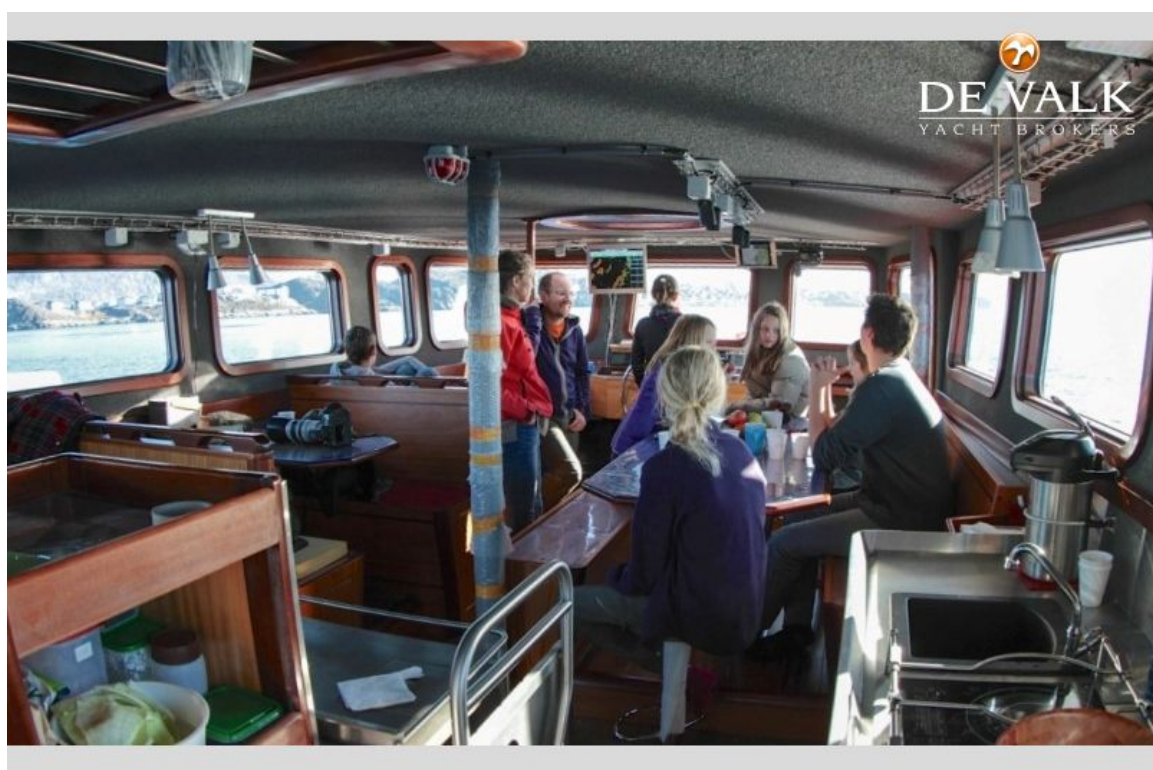
MY SILA INUA







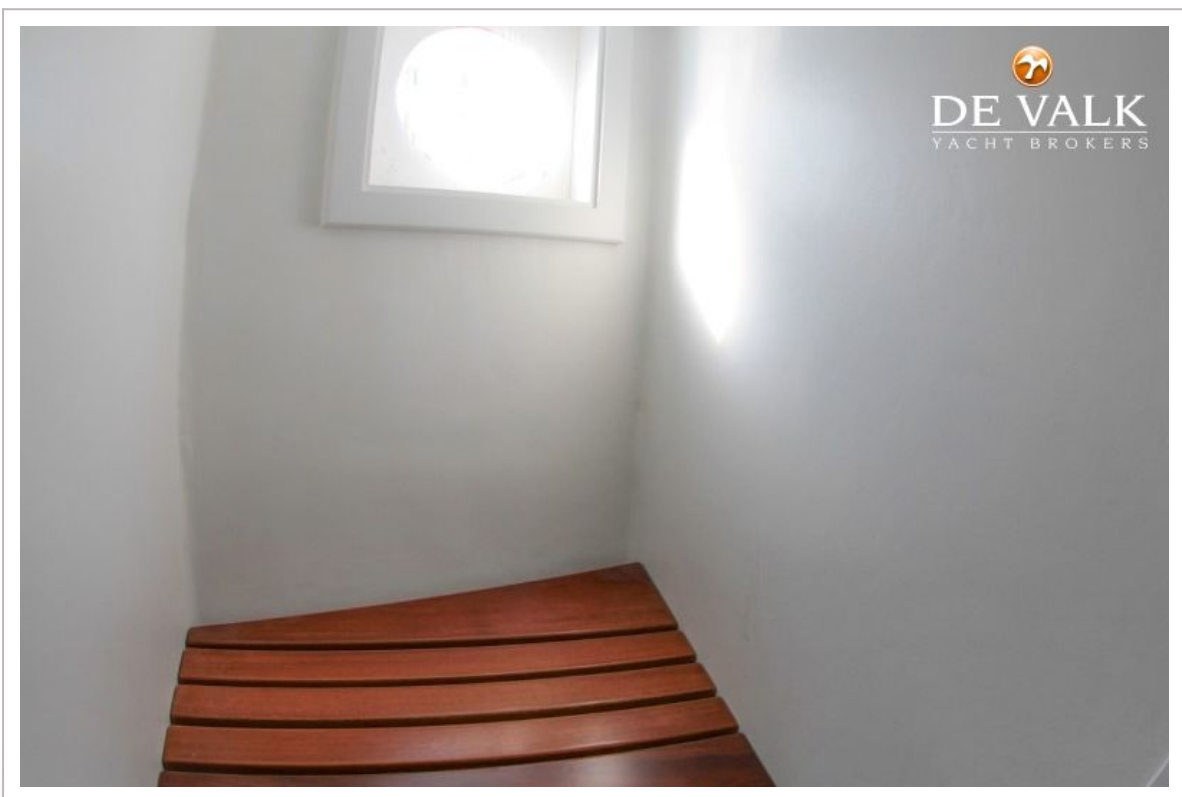
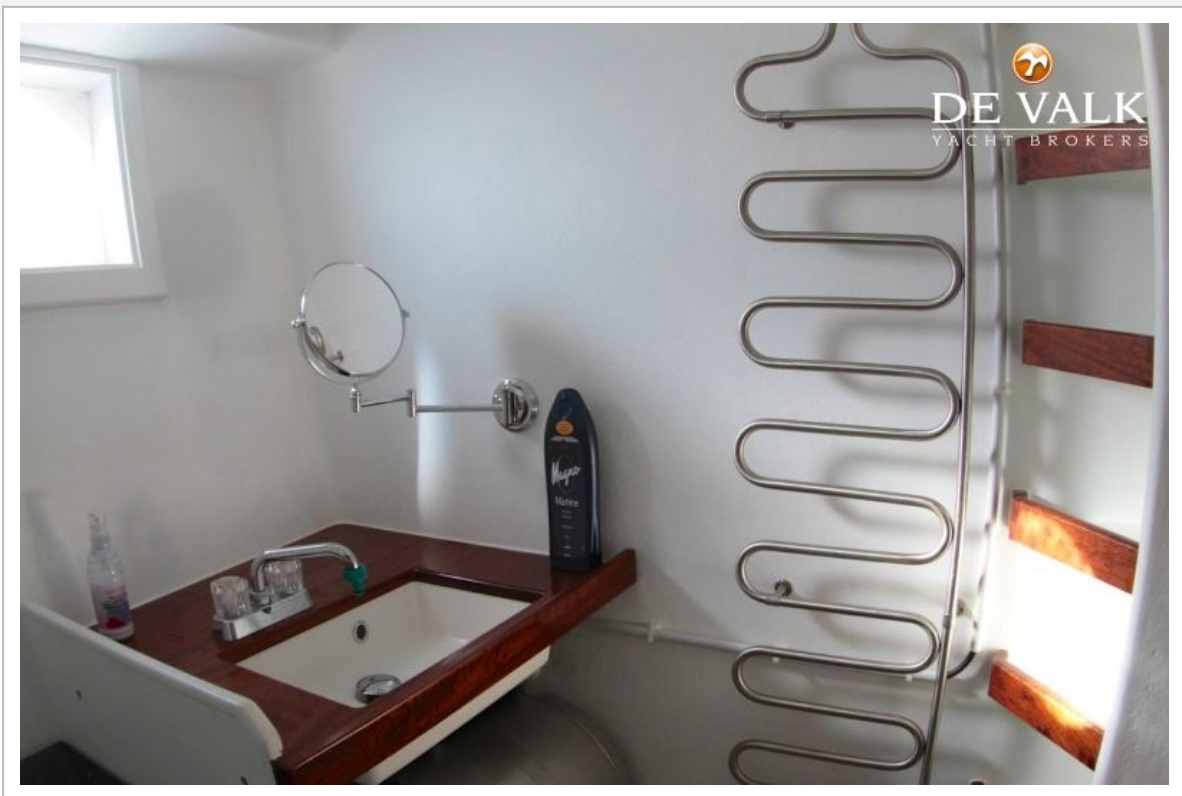
MY SILA INUA

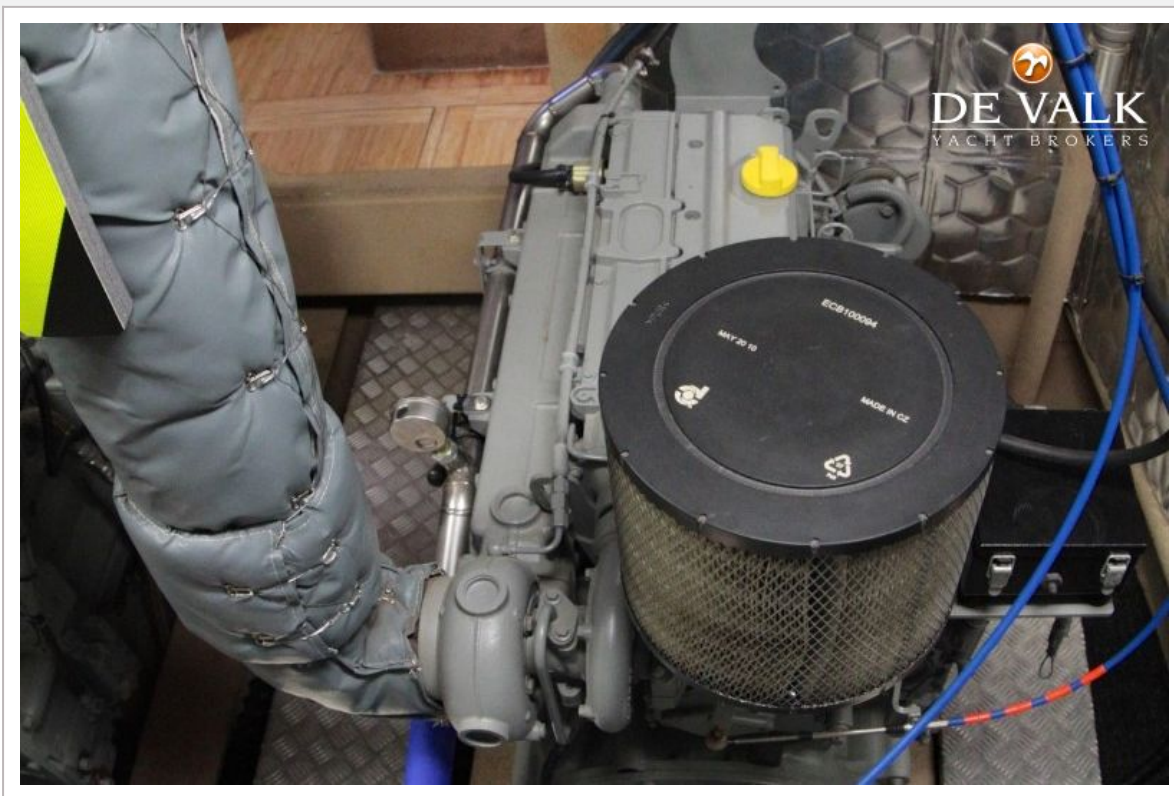




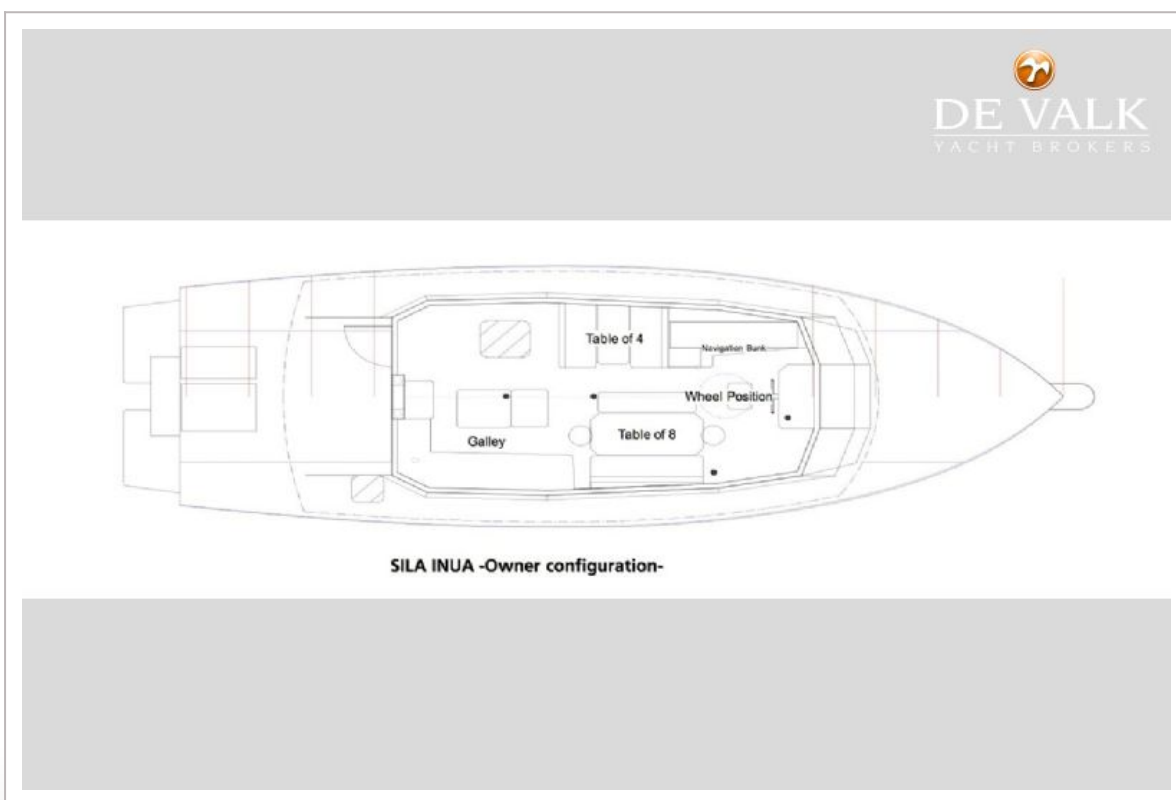












SILA INUA -Owner configuration-

