



DE VALK
YACHT BROKERS



HALLBERG RASSY 40



DE VALK
YACHT BROKERS

HALLBERG RASSY 40

BROKER'S COMMENTS

The new 40 footer from Hallberg Rassy was an instant success upon introduction. Designed by German Frers. This 40 model is in as new condition and comes very well equipped indeed. She is very easy handle whilst under way or in the marina. Fitted out with a bow thruster and generator.

Sander van der Voorn

SPECIFICATIONS

Dimensions	12.40 x 3.82 x 1.99 (m)	Builder	Hallberg Rassy Varvs AB
Built	2009	Cabins	2
Material	GRP	Berths	6
Engine(s)	1 x Volvo Penta D2-55F diesel	Hp/Kw	55.00 (hp), 40.42 (kw)
Asking price	sold (VAT)	Lying	at sales office

CONTACT

Sales office	De Valk Monnickendam B.V.	Telephone	+31 (0)299 65 63 50
Address	Hoogedijk 6 1145 PM Katwoude NL	E-mail	monnickendam@devalk.nl

DISCLAIMER

These particulars are given in good faith as supplied but cannot be guaranteed.



HALLBERG RASSY 40

GENERAL

Model	HALLBERG RASSY 40
Type	sailing yacht
LOA (m)	12,40
LWL (m)	10,60
Beam (m)	3,82
Draft (m)	1,99
Air draft (m)	18,30
Headroom (m)	1,92
Year built	2009
Builder	Hallberg Rassy Varvs AB
Country	Sweden
Designer	German Frers
Displacement (t)	10
Ballast (tonnes)	4,1
CE norm	A (Off Shore)
Hull material	GRP
Hull colour	white
Hull shape	roundbilged
Keel type	fin keel
Superstructure material	GRP
Rubbing strake	stainless steel
Deck material	GRP
Deck finish	teak
Superstructure deck finish	teak
Cockpit deck finish	teak
Window frame	aluminium
Window material	perspex
Fuel tank (litre)	Total 460 in 2 tanks
Level indicator (fuel tank)	on main switch panel
Freshwater tank (litre)	Total 460 in 2 tanks



Level indicator (freshwater)	on main switch panel
Blackwater tank (litre)	stainless steel 72
Blackwater tank extraction	deck extraction + pump
Wheel steering	yes
Emergency tiller	yes

ACCOMMODATION

Cabins	2
Berths	6
Interior	mahogany
Floor	teak and holly
Saloon	L-shaped settee on SB
Headroom saloon (m)	1,92
Heating	Webasto Airtop 3500w (4 outlets)
Chart table	yes
Aft Cabin	yes
Galley	yes
Countertop	PlexiCor composite stone
Sink	stainless steel 2
Cooker	ENO
Oven	yes
Fridge	Isotherm SP - Danfoss compressor
Hot water system	220V + engine
Water pressure system	electrical Seagull
Owners cabin	double bed + single bed
Wardrobe	hanging/drawers/shelves
Bathroom	shared
Toilet	yes
Toilet system	manual Jabsco
Wash basin	Corian
Shower	separate



HALLBERG RASSY 40

Guest cabin 1	v-bed
Bed length (m)	2,05
Wardrobe	hanging and drawers
Extra info	Headroom: owner cabin 1,92m, shower: 1,93 m.

MACHINERY

No of engines	1
Make	Volvo Penta
Type	D2-55F
HP	55,00
kW	40,42
Fuel	diesel
Year installed	2009
Engine hours	599
Engine cooling system	freshwater heat exchanger
Drive	shaft
Gearbox	hydraulic
Engine controls	bowden cable
Bowthruster	Sleipner Side Power 8 hp
Propeller type	folding Flexofold
Propeller blades	3 + stripper rope cutter on shaft
Propeller shaft material	stainless steel
Shaft lubrication	water
Manual bilge pump	yes
Electric bilge pump	yes
Electrical installation	12V/220V
Generator	Mastervolt Whisperv3,5 kW diesel (230v/50hz)
Start battery	1x 62 Ah
Service battery	Domestic circuit 2x 285 Ah (4x6V arranged in two banks)
Battery monitor	yes



Battery charger	Adverc smart charger, Mastervolt IVO smart battery charger 12v/50A
Inverter	115A on engine
Shorepower	yes
Extra info	Spare fixed propeller.

NAVIGATION

Compass	Silva
Depth sounder	Raymarine digital depth sounder module with hub unit
Windset	Raymarine ST60
VHF	Icom VHF Commandmic + waterproof remote speaker. Icom VHF IC M603 at chart table.
VHF handheld	Icom @! charger M35
Autopilot	Raymarine ST 7002G with Tyoe II linear drive
GPS	Raymarine 400 handheld GPS in charger
Navtex	Furuno Navtex NX-300D
AIS receiver	Raymarine AIS250 receiver
Personal MOB transmitter	Raymarine MOB button
Extra info	Raymarine E80 multifunction display with GPS antenna, Hatteland LCD display linked to Raymarine Raymarine 2kW radome on radar pole. UFO marine TV.FM antenna at masthead. VHF aerial at mast head. Spare VHF aerial on radar pole (wired to chart table). At charttable: Hatteland LCD display linked to Raymarine system with remote keyboard. Raymarine ST60 multifunction display. Raymarine remote smart controller. Raymarine lifetag system with four senders. Satelite phone - Irdium 9522tp.

EQUIPMENT

Fixed windscreen	with opening section
Sprayhood	yes
Cockpit cover	yes
Cockpit cushions	yes
Cockpit table	yes



HALLBERG RASSY 40

Bathing platform	yes
Boarding ladder	yes
Deck shower	on bathing platform
Anchor	Delta 20 kg
Anchor chain	60m (10mm)
Anchor 2	15 kg kedge + 30 m line
Windlass	electrical Lewmar
Davits	stainless steel
Davits controls	manual
Sea railing	stainless steel
Pushpit	S/S
Pulpit	S/S
Life raft	Avon
Life raft (pers)	6
Last life raft survey	must be proofed
Danbuoy	Telescopic in rail mount
Radar reflector	Echomax 230 radar reflector on mast.
Fenders	yes
Mooring lines	yes
Radio-cd player	Pioneer DEM P7000VB
Speakers in salon	yes
Speakers in cabin	yes
Clock - barometer	Wempe
Fire extinguisher	Several
Extra info	Outboard bracket, two teak pushpit seats. Brass strips to all mooring cleats. Radar pole with removable outboard lifting arm. Aftdeck light on radar pole. Echomax X and S band target enhancer at masthead. Webbin jackstays on side decks. Safety harness pad eyes in cockpit. Lifebelt with automatic light. Kato marine davits with stern rail supports.

RIGGING



HALLBERG RASSY 40

Rigging	sloop-cutter
Brand mast	Seldén
Material mast	aluminium
Spreaders	3x 2
Fully battened mainsail	Elvstrom
Genoa	Elvstrom
Genoa furler	Furlex 300s
Gennaker	on furler with removable bowsprit
Stormjib	13,6 m2
Reefing System	slabreefing 3 + stack pack
Boomvang	Selden Rodkicker
Primary sheet winch	Lewmar 50
Secondary sheet winch	Lewmar 30
Halyard winches	Lewmar 8
Spi-pole	Mast
Extra info	Trysail track on mast, Scott boomlock, Granny bars at mast.



HALLBERG RASSY 40



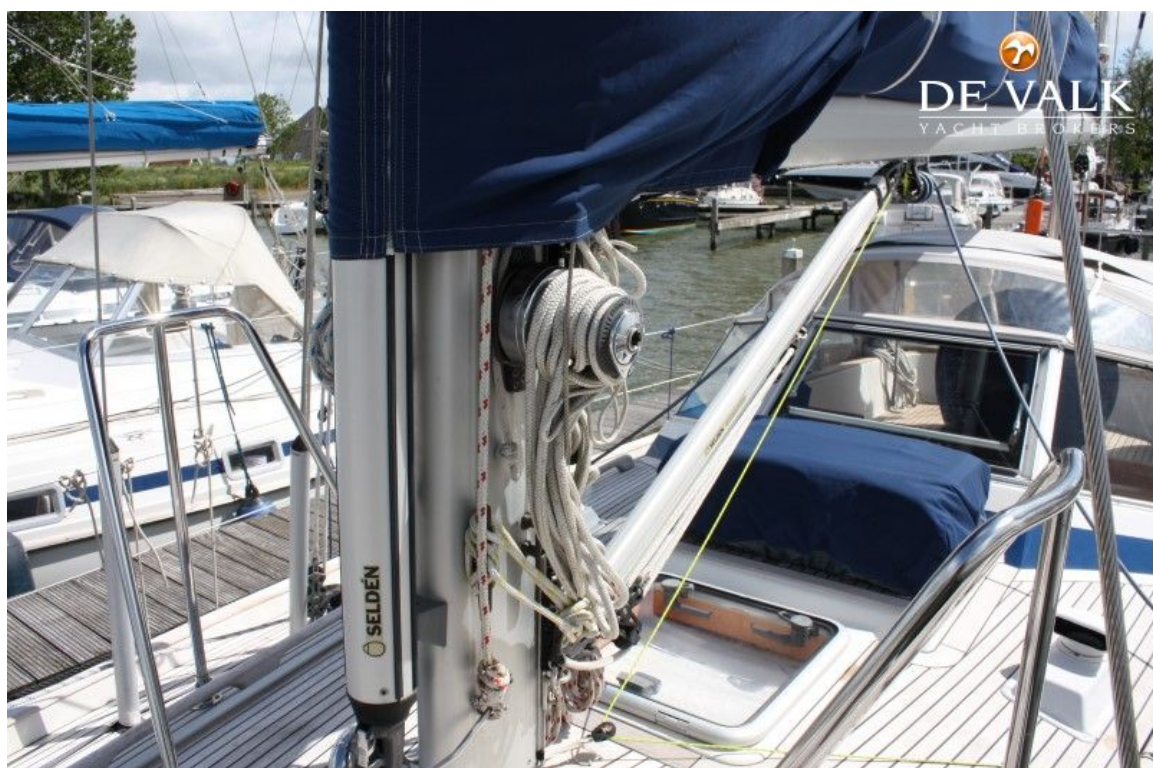
HALLBERG RASSY 40



HALLBERG RASSY 40



HALLBERG RASSY 40



HALLBERG RASSY 40



HALLBERG RASSY 40



HALLBERG RASSY 40



HALLBERG RASSY 40



HALLBERG RASSY 40



HALLBERG RASSY 40



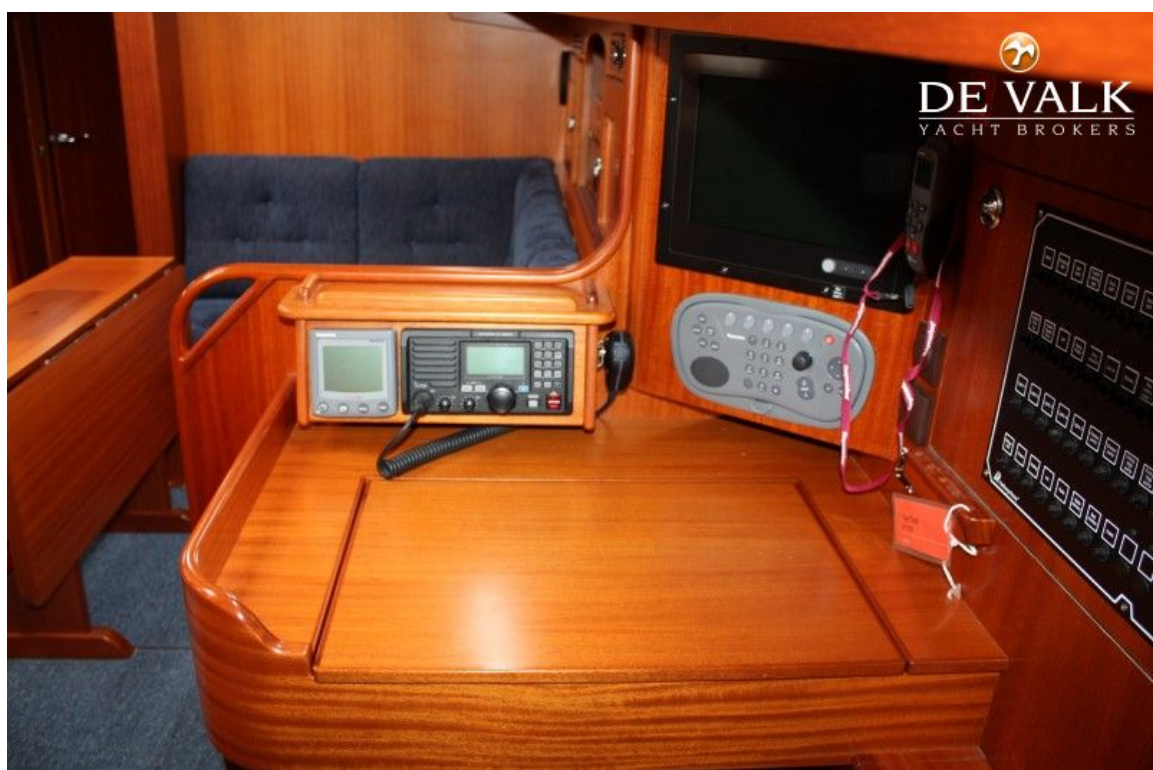
HALLBERG RASSY 40



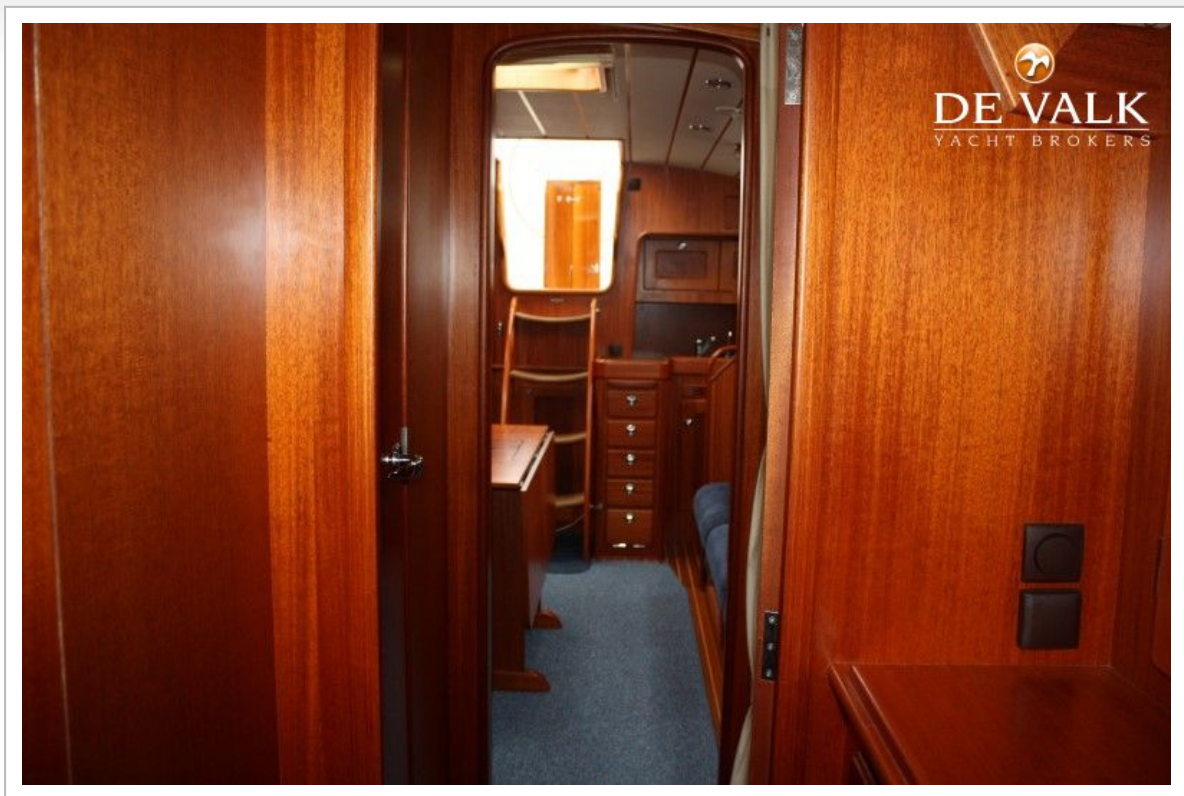
HALLBERG RASSY 40



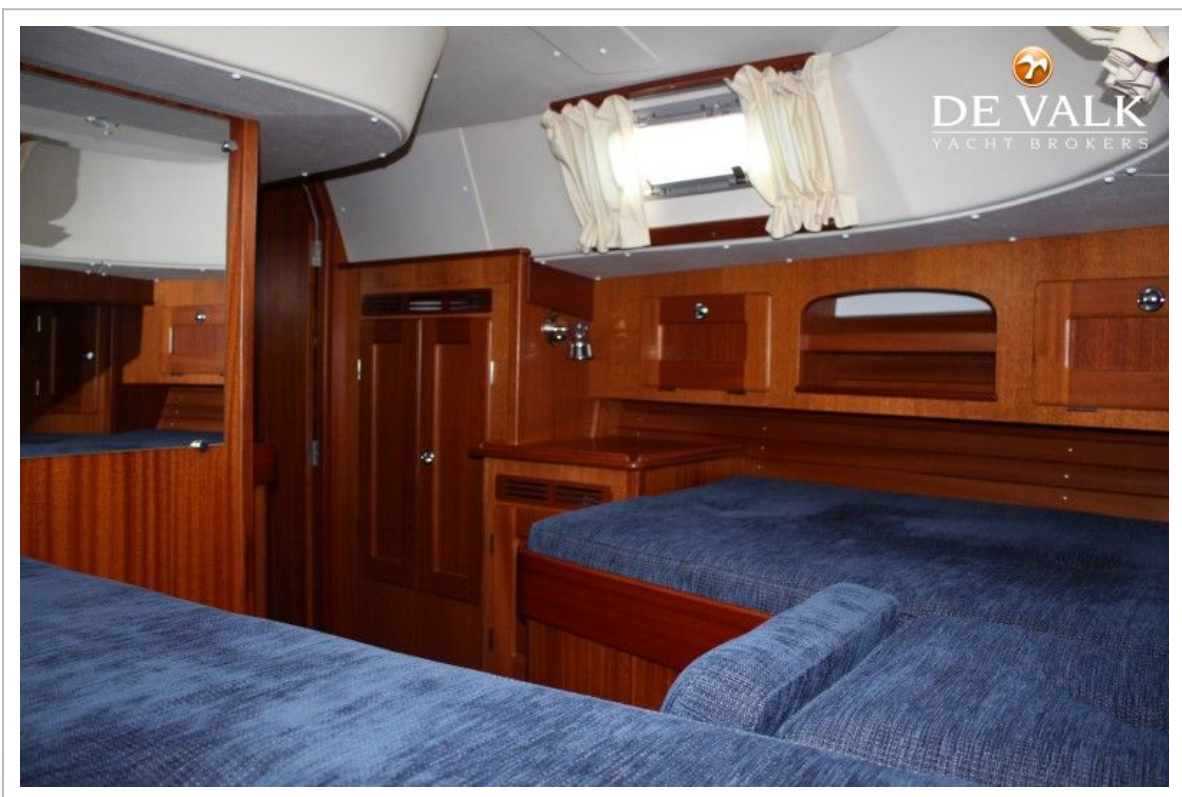
HALLBERG RASSY 40



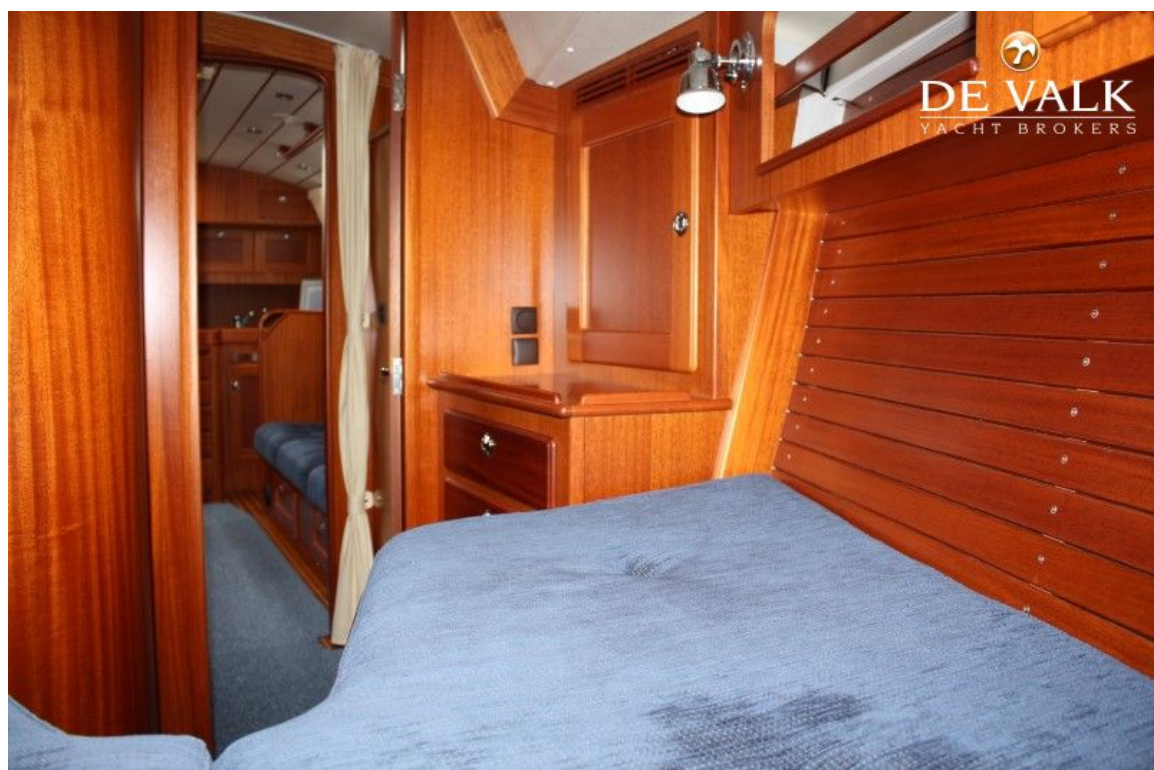
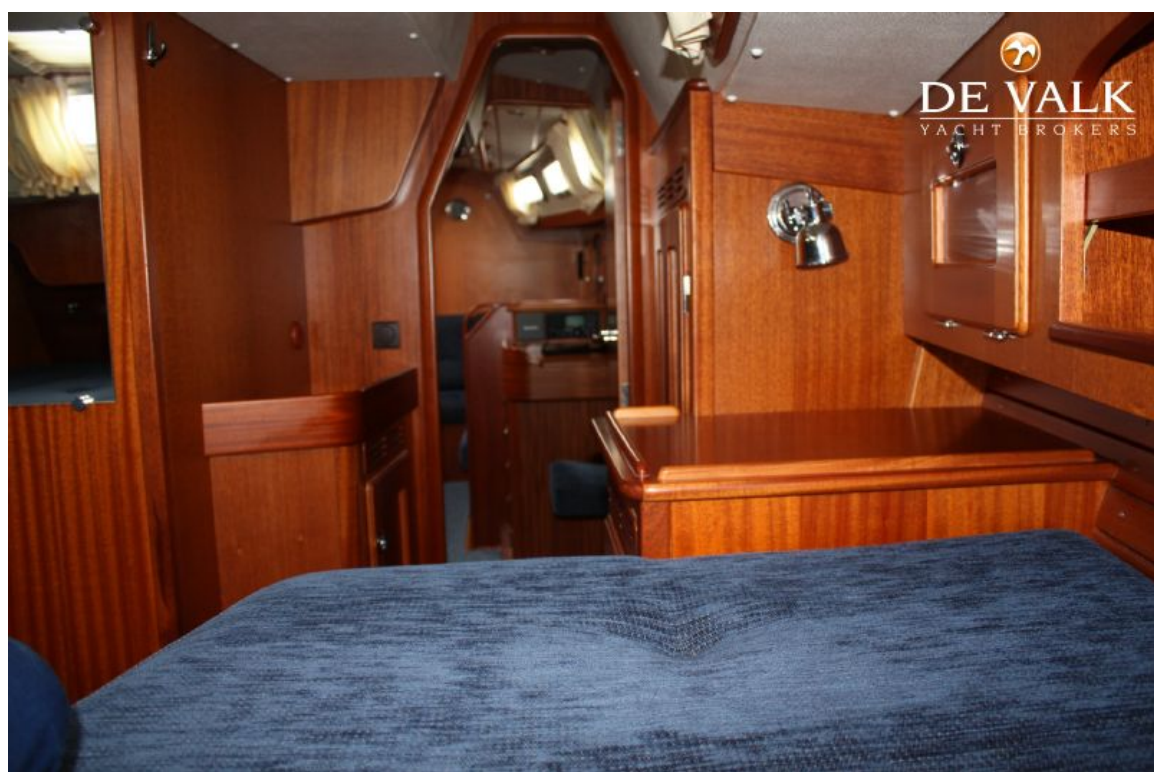
HALLBERG RASSY 40



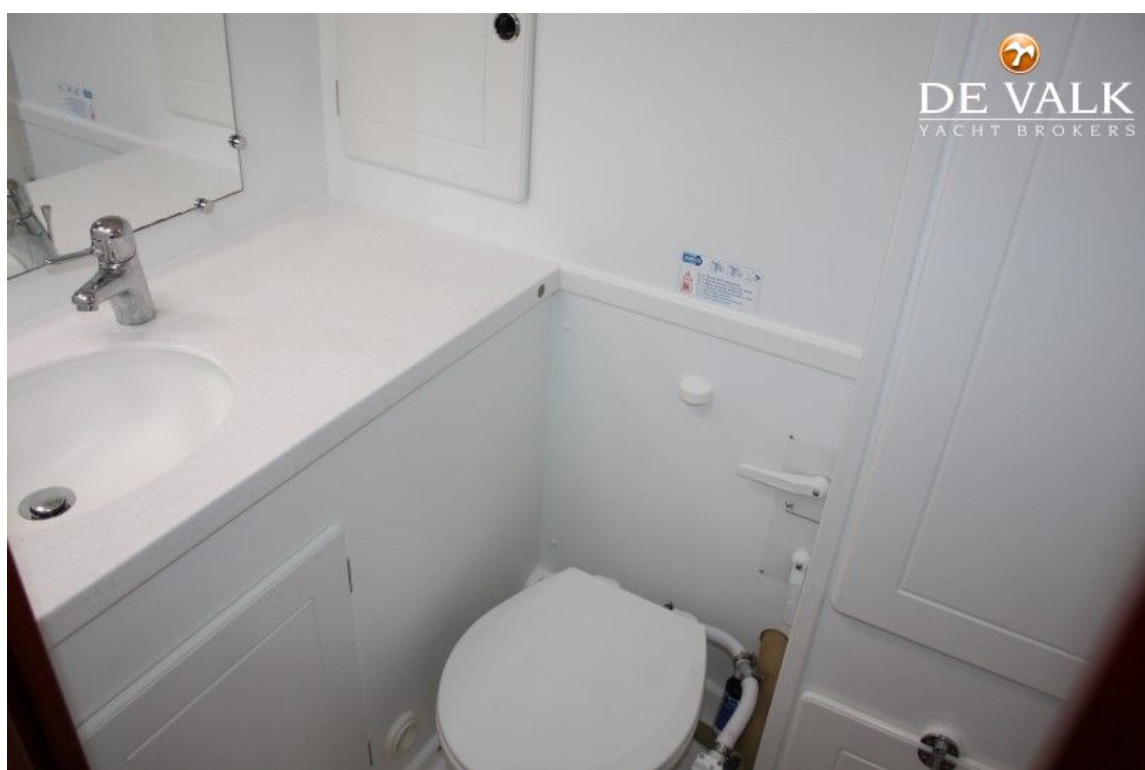
HALLBERG RASSY 40



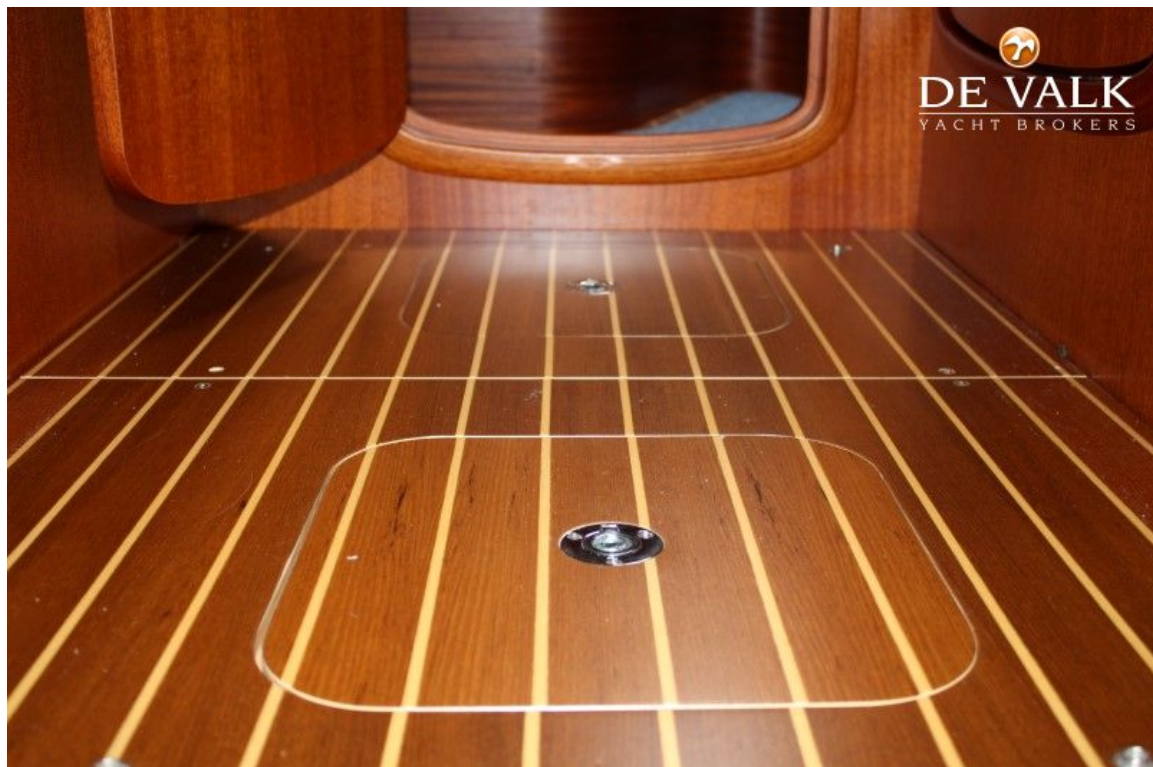
HALLBERG RASSY 40



HALLBERG RASSY 40



HALLBERG RASSY 40



HALLBERG RASSY 40

