



DEHLER 39 SQ



BROKER'S COMMENTS

Built for lovers of speed and quality, the Dehler 39SQ is a very fast, comfortable and luxurious sailing yacht. This Judel & Vrolijk design is designed to be an easy and fast yacht with great care for ergonomics, comfort and space as well on as under the deck. Complete delivered with a new main sail and genoa of Doyle Raudaschl (2014). Yacht can be delivered without VAT, the asking price is included VAT.

Sander van der Voorn

SPECIFICATIONS

Dimensions	11.80 x 3.80 x 1,95 / 1.95 (m)	Builder	Dehler Yachtbau
Built	2007	Cabins	3
Material	GRP	Berths	6
Engine(s)	1 x Volvo Penta D2-40 diesel	Hp/Kw	39.00 (hp), 28.67 (kw)
Asking price	sold (VAT)	Lying	contact Monnickendam

CONTACT

Sales office	De Valk Monnickendam B.V.	Telephone	+31 (0)299 65 63 50
Address	Hoogedijk 6 1145 PM Katwoude NL	E-mail	monnickendam@devalk.nl

DISCLAIMER

These particulars are given in good faith as supplied but cannot be guaranteed.



GENERAL

Model	DEHLER 39 SQ
Type	sailing yacht
LOA (m)	11,80
LWL (m)	10,70
Beam (m)	3,80
Draft (m)	1,95
Draft min (m)	1,95
Air draft (m)	18,50
Headroom (m)	1,97
Year built	2007
Builder	Dehler Yachtbau
Country	Germany
Designer	Judel Vrolijk Design
Displacement (t)	7,5
CE norm	A
Hull material	GRP
Hull colour	white
Hull shape	roundbilged
Keel type	fin keel
Superstructure material	GRP
Rubbing strake	rubber
Deck material	GRP
Deck finish	Treadmaster TBS renewed in 2013
Superstructure deck finish	Treadmaster + GRP
Cockpit deck finish	teak Cockpitfloor renewed in 2013
Antifouling (year)	5 layers of epoxy primer 2013
Dorades	2
Window frame	aluminium
Window material	polycarbonate
Fuel tank (litre)	stainless steel 108 litres



Level indicator (fuel tank)	Gauge on Calibra Sealine panel 428
Freshwater tank (litre)	polyethylene 240 litres
Level indicator (freshwater)	Gauge on Calibra Sealine panel 428
Blackwater tank (litre)	stainless steel 50 litres
Level indicator (blackwater)	Gauge on Calibra Sealine panel 428
Blackwater tank extraction	deck extraction + pump
Wheel steering	mechanical Lewmar
Emergency tiller	stainless steel

ACCOMMODATION

Cabins	3
Berths	6
Interior	cherry
Floor	teak and holly
Saloon	yes
Headroom saloon (m)	1,97
Heating	diesel ducted hot air Webasto
Chart table	yes
Galley	yes
Countertop	corian
Sink	stainless steel 2x
Cooker	calor gas Two burners
Oven	yes
Fridge	yes
Hot water system	220V + engine Boiler QL
Water pressure system	electrical
Owners cabin	v-bed Front
Wardrobe	hanging/drawers/shelves
Guest cabin 1	double bed Starboard side
Bed length (m)	1,97
Wardrobe	hanging



Bathroom	shared
Toilet	shared
Toilet system	manual Jabsco
Wash basin	in the bathroom
Shower	shared
Guest cabin 2	double bed Portside
Bed length (m)	1,97
Wardrobe	hanging and drawers

MACHINERY

No of engines	1
Make	Volvo Penta
Type	D2-40
HP	39,00
kW	28,67
Fuel	diesel
Year installed	2007
Maximum speed (kn)	7
Range (nm)	12386
Engine hours	1352
Engine cooling system	freshwater heat exchanger
Drive	sail-drive
Engine controls	bowden cable Volvo Penta
Gearbox	mechanical Volvo Penta
Exhaust	watercooled
Propeller type	folding
Propeller blades	3
Manual bilge pump	yes
Electric bilge pump	yes
Electrical installation	12/220V
Start battery	1x 75 Ah



Service battery	2x 210 Ah
Battery monitor	On Calibra Sealine panel 428
Battery charger/inverter	yes
Shorepower	with cable

NAVIGATION

Compass	Suunto
Depth sounder	Raymarine ST60+ Depth
Log	Raymarine ST60+ Speed
Windset	Raymarine ST60+ Wind
Repeater	Raymarine ST60+ Graphic
VHF	with outside speaker Raymarine RAY 240E
Autopilot	Raymarine ST6002 Smart Pilot
GPS	by Raymarine Hybrid Touch E-Serie
Plotter	Raymarine Hybrid Touch E-Serie

EQUIPMENT

Sprayhood	yes
Bathing platform	yes
Boarding ladder	stainless steel
Anchor	yes
Sea railing	wire
Grab rail (superstructure)	stainless steel
Pushpit	stainless steel
Pulpit	stainless steel
Fenders	yes
Mooring lines	yes
Radio-cd player	with USB connection JVC
Speakers in salon	2x Visaton
Fire extinguisher	2



RIGGING

Rigging	sloop 9/10
Standing rigging	wire 2007
Brand mast	Seldén
Material mast	aluminium
Spreaders	Three sets
Mainsail	Doyle Raudaschl (2014)
Mainsail cover	Dehler Maindrop system (2014)
Genoa	Doyle Raudaschl (2014)
Genoa furler	Harken MK III
Backstay adjuster	mechanical Seldén
Boomvang	tackle Seldén Rodkicker
Genoa sheetwinches	2x Harken ST46
Halyard winches	1x Harken ST40 (electric)
Multifunctional winches	1x Harken ST40



DEHLER 39 SQ



DEHLER 39 SQ



DEHLER 39 SQ



DEHLER 39 SQ



DEHLER 39 SQ



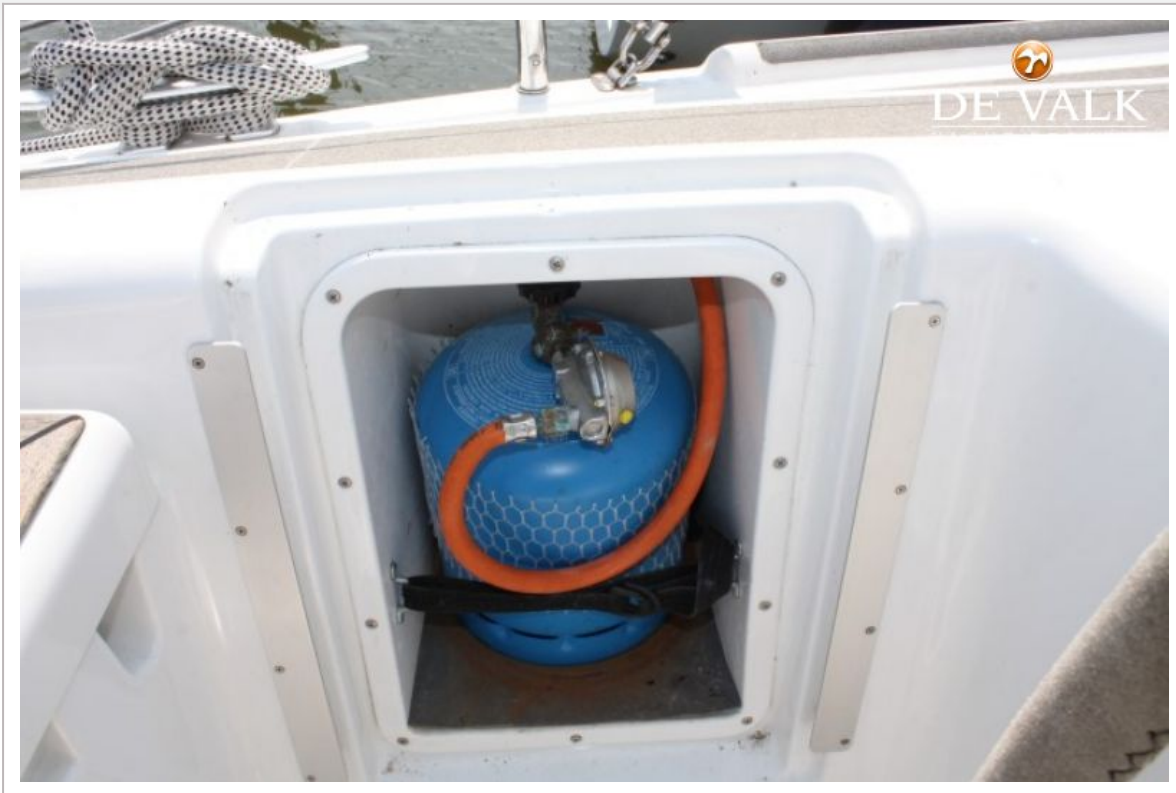


DEHLER 39 SQ





DEHLER 39 SQ



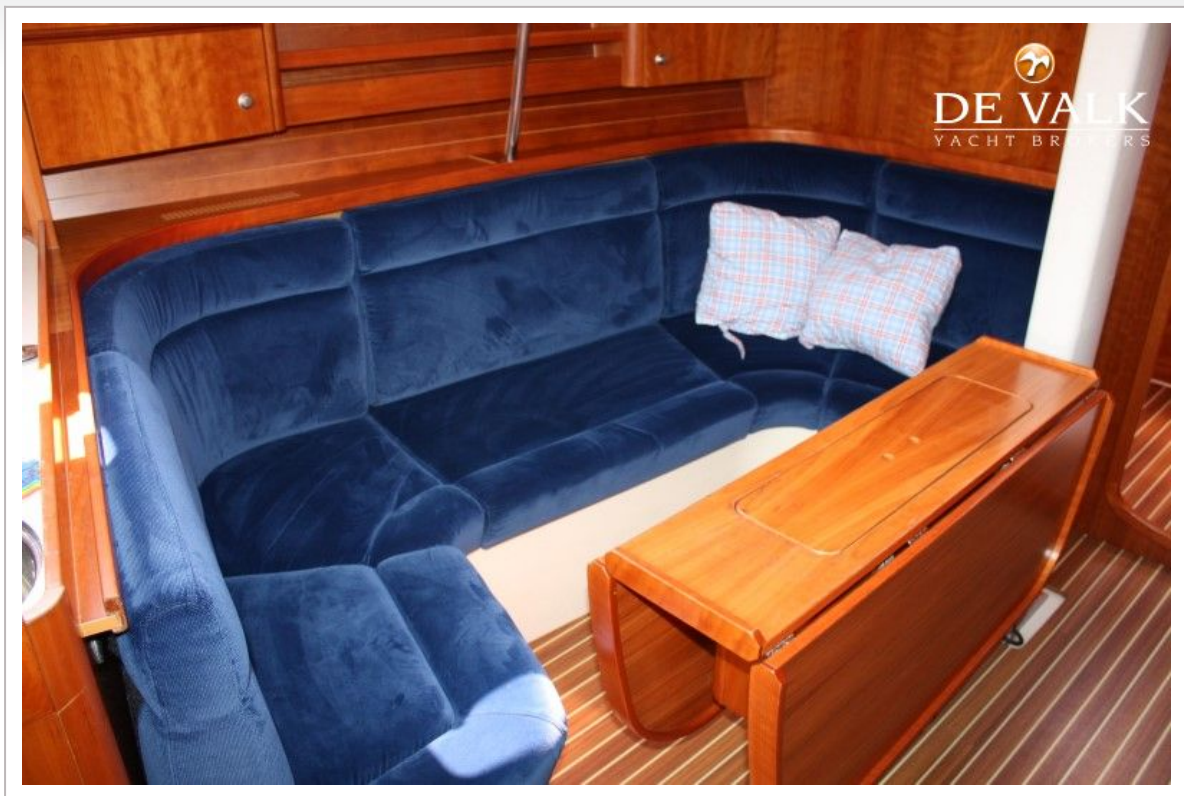
DEHLER 39 SQ



DEHLER 39 SQ

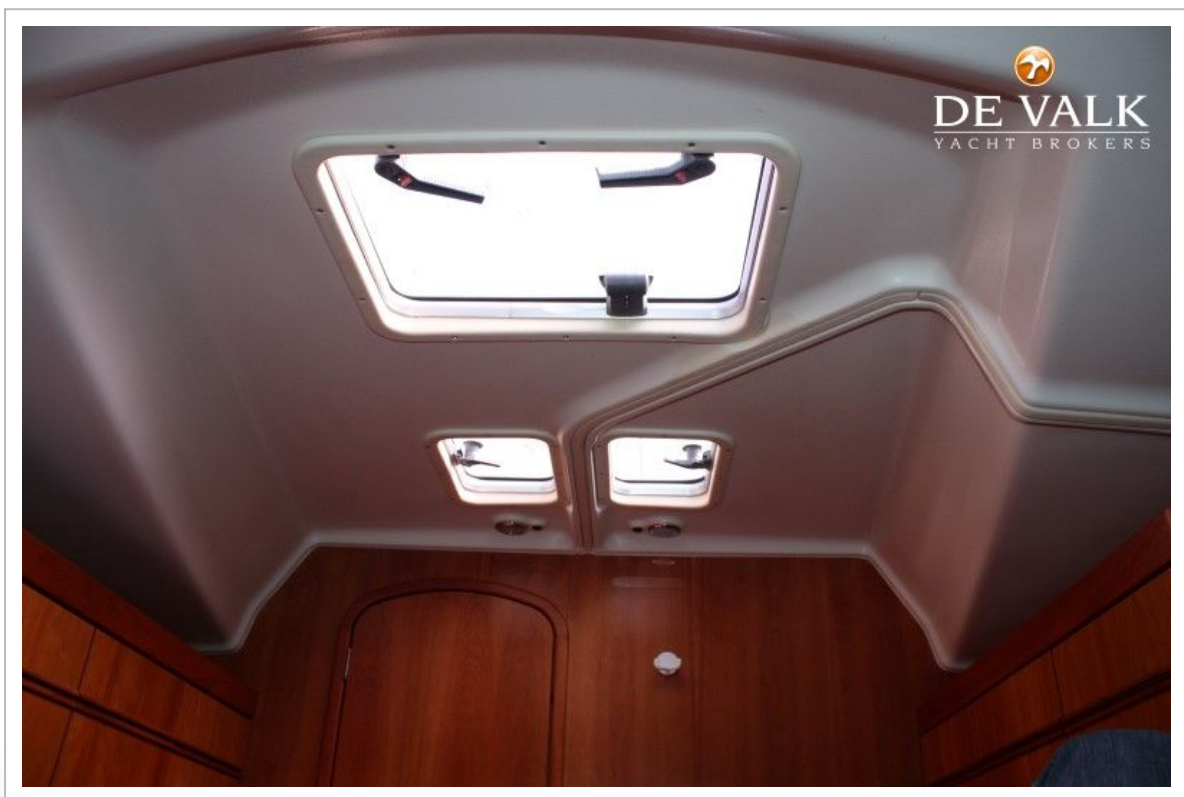


DEHLER 39 SQ

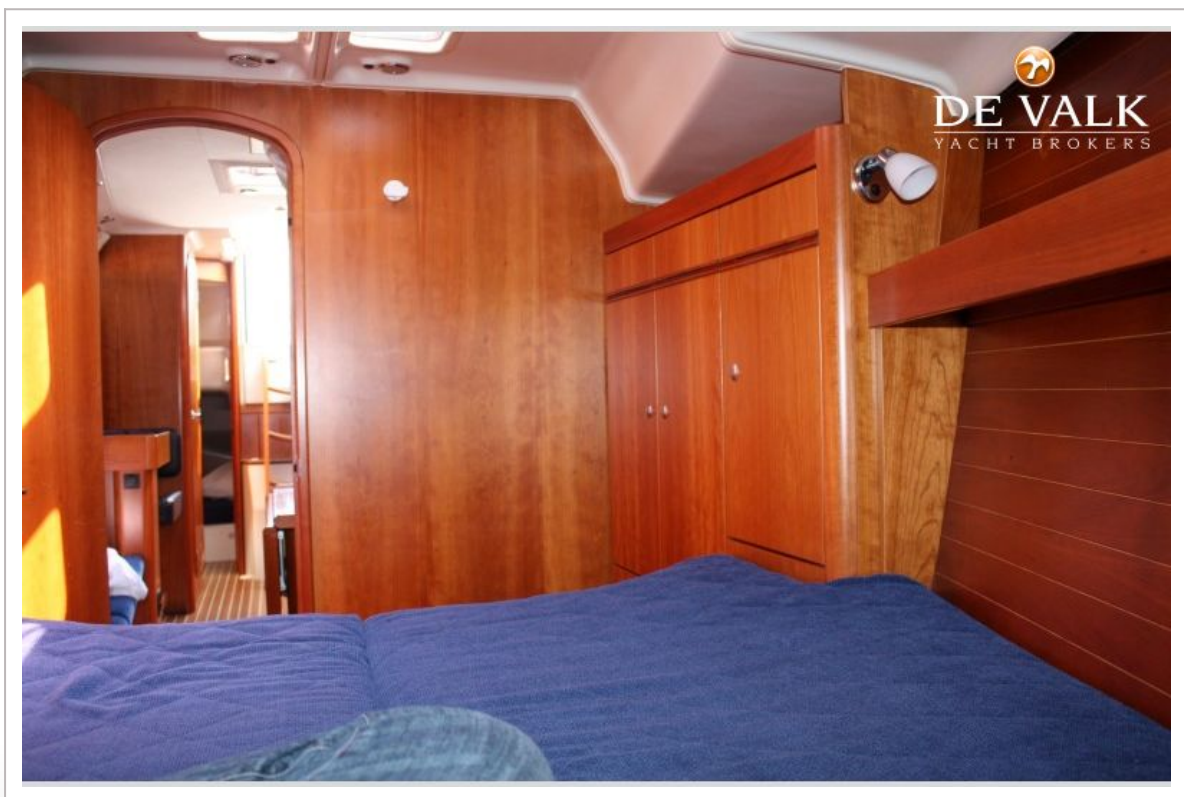
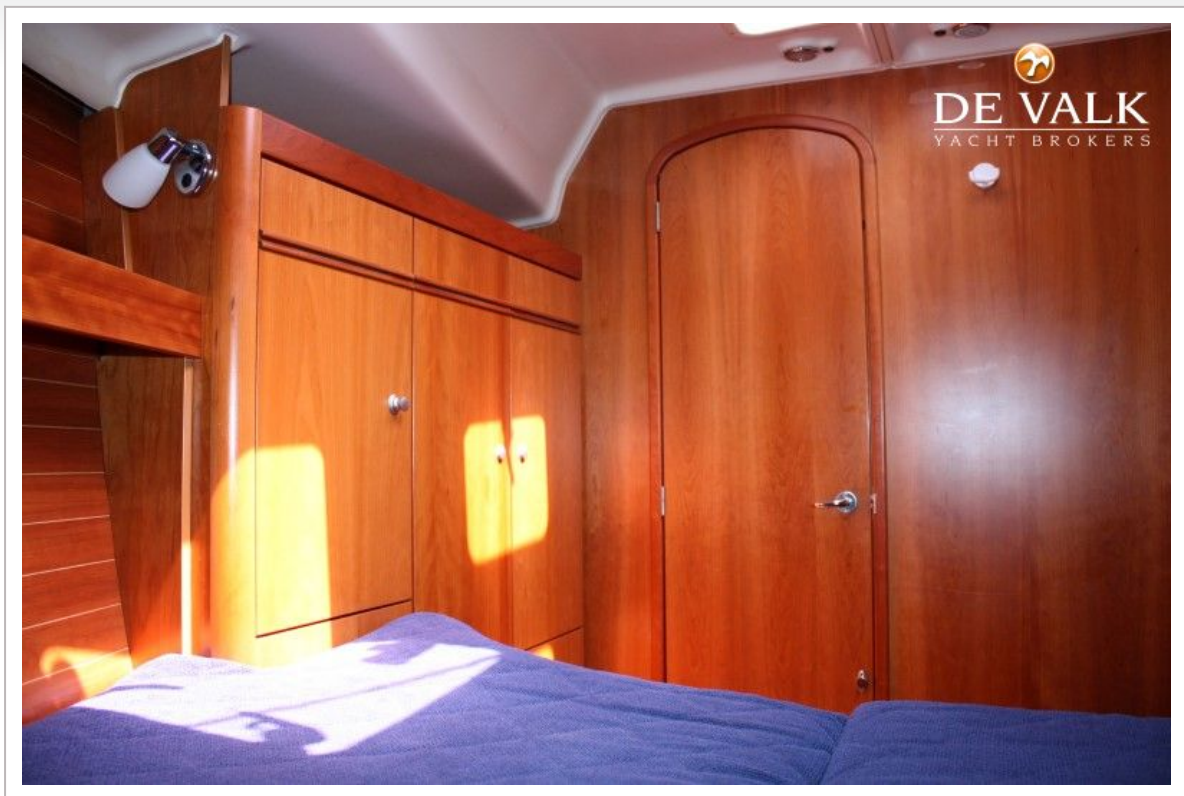




DEHLER 39 SQ

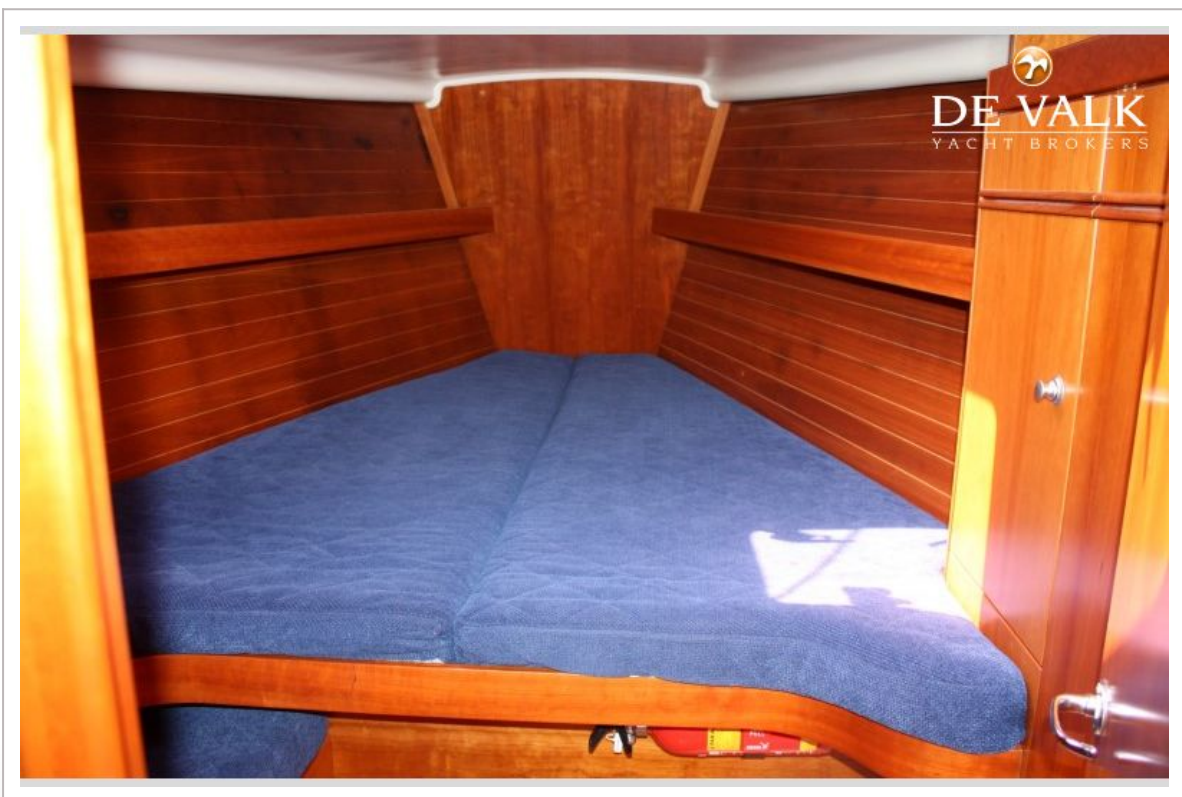


DEHLER 39 SQ

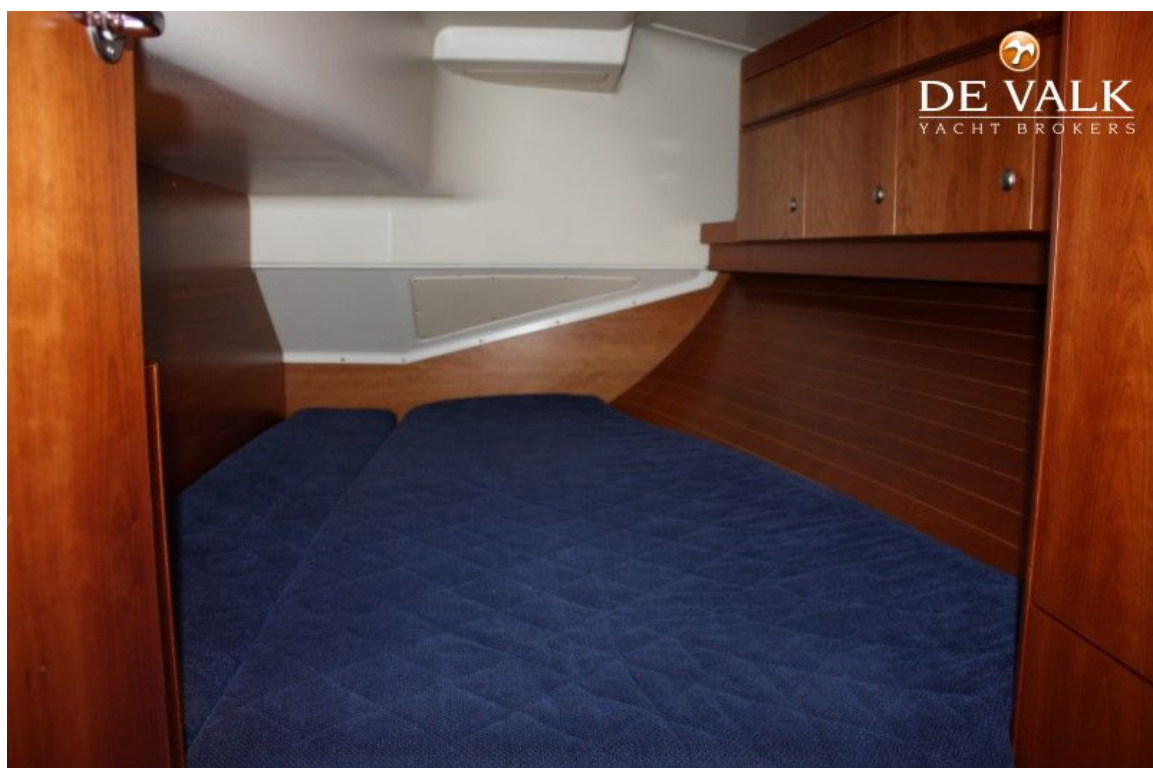
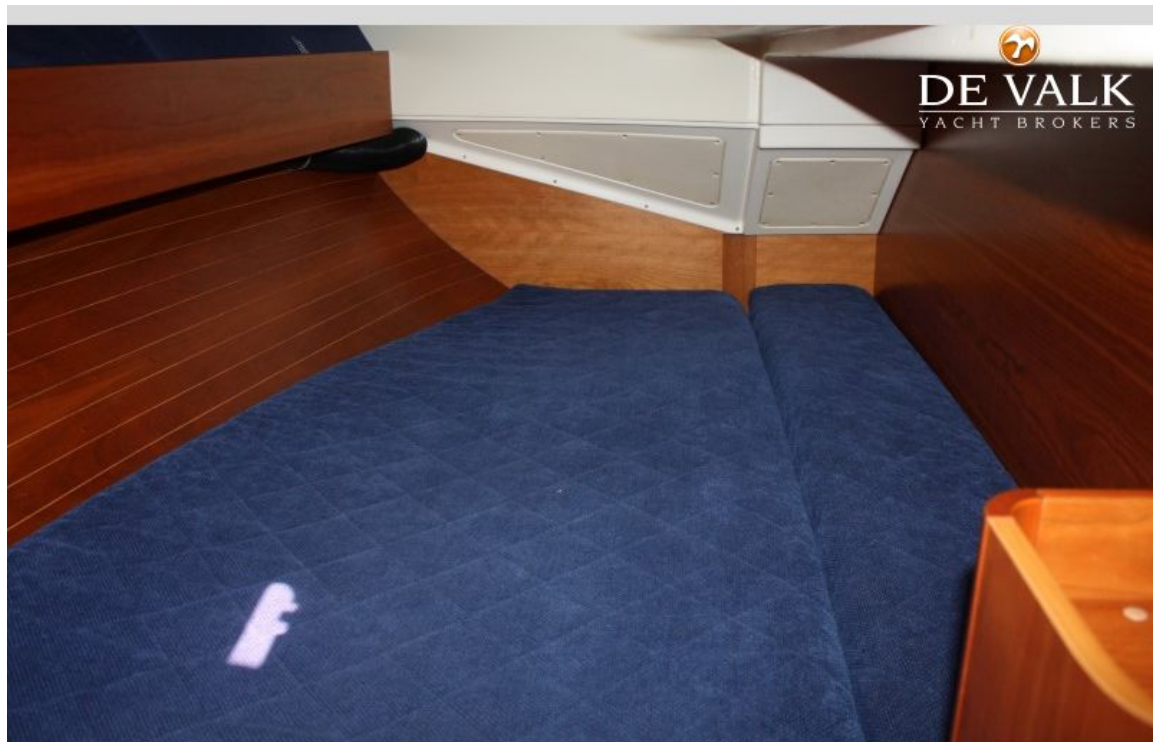




DEHLER 39 SQ



DEHLER 39 SQ



DEHLER 39 SQ

