



DE VALK
YACHT BROKERS



DEHLER 39



DE VALK
YACHT BROKERS

BROKER'S COMMENTS

Built for lovers of speed and quality, the Dehler 39 is very fast, comfortable and luxurious yacht. This Judel & Vrolijk design is designed to be an easy and fast yacht with great care for ergonomics, comfort and space as well on as under the deck. She is build in 2001 and brought on the market in 2002. The current owner kept her in very good condition and now looking for another skipper.

Sander van der Voorn

SPECIFICATIONS

Dimensions	11.81 x 3.85 x 1.98 (m)	Builder	Dehler Yachtbau GmbH
Built	2002	Cabins	3
Material	GRP	Berths	8
Engine(s)	1 x Yanmar 3JH3E diesel	Hp/Kw	40.00 (hp), 29.40 (kw)
Asking price	sold (VAT)	Lying	at sales office

CONTACT

Sales office	De Valk Monnickendam B.V.	Telephone	+31 (0)299 65 63 50
Address	Hoogedijk 6 1145 PM Katwoude NL	E-mail	monnickendam@devalk.nl

DISCLAIMER

These particulars are given in good faith as supplied but cannot be guaranteed.



GENERAL

Model	DEHLER 39
Type	sailing yacht
LOA (m)	11,81
LWL (m)	11,03
Beam (m)	3,85
Draft (m)	1,98
Air draft (m)	18,30
Headroom (m)	1,95
Year built	2002
Builder	Dehler Yachtbau GmbH
Country	Germany
Designer	Judel & Vrolijk
Displacement (t)	7,8
Ballast (tonnes)	2.945
CE norm	CE A (Off shore)
Hull material	GRP
Hull colour	white
Hull shape	round-bilged
Keel type	fin keel
Superstructure material	GRP
Rubbing strake	rubber
Deck material	GRP
Deck finish	TBS anti-slip profile mats
Cockpit deck finish	TBS anti-slip profile mats
Antifouling (year)	2015
Dorades	2
Window frame	aluminium
Window material	polycarbonate
Deckhatch	yes
Fuel tank (litre)	polyethylene 110



Level indicator (fuel tank)	gauge on Panel 482
Freshwater tank (litre)	polyethylene 230
Level indicator (freshwater)	gauge on Panel 482
Wheel steering	mechanical Whitlock
Emergency tiller	S/S
Extra info	Wheel covered with leather.

ACCOMMODATION

Cabins	3
Berths	8
Interior	cherry
Floor	teak and holly
Saloon	U-shaped settee + bench
Headroom saloon (m)	1,97
Heating	diesel ducted hot air Webasto
Chart table	yes
Aft Cabin	2
Dinette	yes
Galley	L- shaped
Countertop	plastic
Sink	stainless steel 2
Cooker	calor gas
Oven	yes
Fridge	yes
Hot water system	220V + engine Sigma 20 L.
Water pressure system	yes
Manual and/or foot pump	yes
Owners cabin	v-bed
Bed length (m)	2,05
Wardrobe	hanging/drawers/shelves
Guest cabin 1	double bed



Bed length (m)	1,97
Wardrobe	shelves
Bathroom	shared
Toilet	
Toilet system	manual Jabsco
Wash basin	
Shower	en suite
Guest cabin 2	double bed
Bed length (m)	1,97
Wardrobe	shelves and hanging
Extra info	Webasto unit replaced in 2012.

MACHINERY

No of engines	1
Make	Yanmar
Type	3JH3E
HP	40,00
kW	29,40
Fuel	diesel
Year installed	2001
Maximum speed (kn)	8
Cruising speed (kn)	7
Range (nm)	27379
Engine hours	1196
Engine cooling system	freshwater heat exchanger
Drive	sail-drive
Engine controls	bowden cable
Exhaust	watercooled
Electric bilge pump	yes
Electrical installation	12V/220V
Batteries	4



Battery charger

Shorepower

Mastervolt

with cable

NAVIGATION

Compass

Whitlock

Depth sounder

Raymarine ST60

Log

Raymarine ST60

Windset

Raymarine ST60

VHF

Furuno

Autopilot

Raymarine ST6000+

Radar

Raymarine Pathfinder RL80 C

GPS

Ratheon GPS RN 300

Electronic chart(s)

C-map (2003) Benelux and Germany

EQUIPMENT

Sprayhood

(2012)

Boarding ladder

stainless steel

Deck shower

Whale

Anchor

Delta

Sea railing

wire

Grab rail (superstructure)

stainless steel

Pushpit

S/S

Pulpit

S/S

Fenders

yes

Mooring lines

yes

Radio-cd player

yes

Cockpit speakers

yes

Speakers in salon

yes

Fire extinguisher

yes



RIGGING

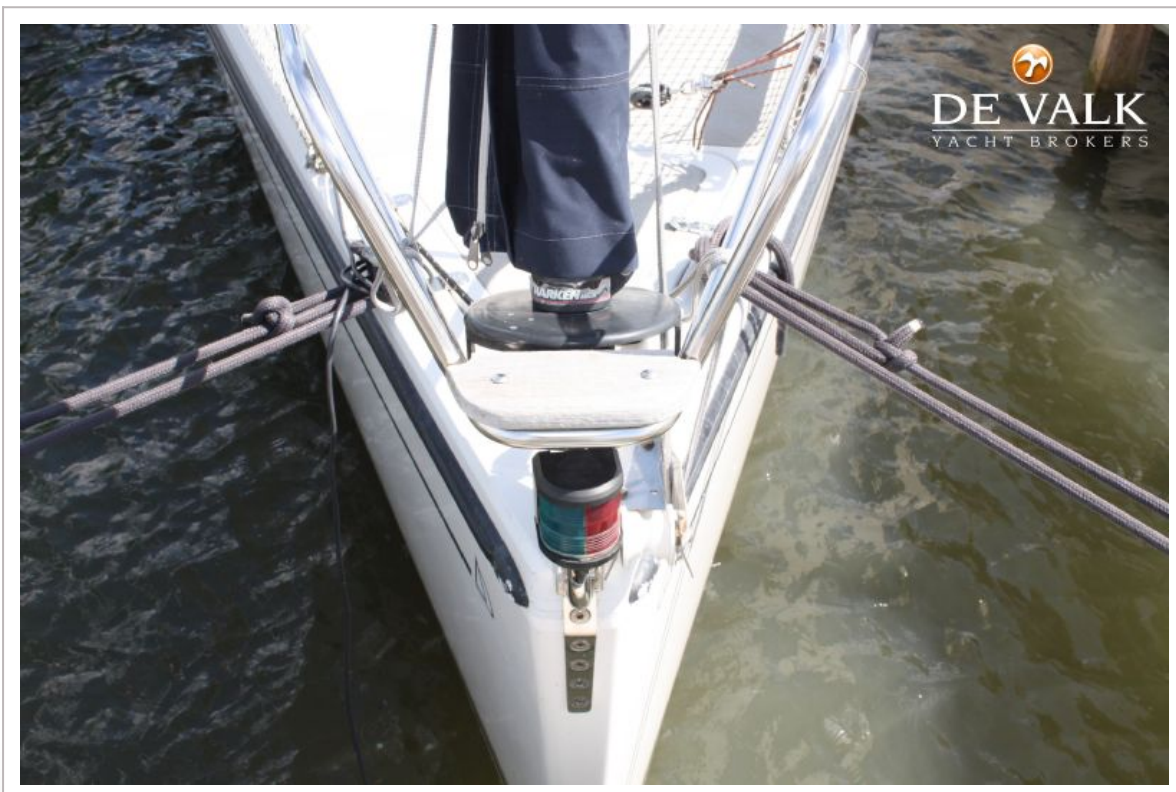
Rigging	sloop
Standing rigging	Dyform
Brand mast	Sparcraft
Material mast	aluminium
Spreaders	3x 2
Mainsail	Quantum Kevlar + Elvstrom DG Laminate
Mainsail cover	yes
Battcars	yes
Jib	Quantum Kevlar + spare jib.
Genoa	Quantum Kevlar (adjusted for furling)
Genoa furler	Harken MK III
Genoa cover	Blue
Spinnaker	UK Sails Spinnaker 133 m2
Backstay adjuster	mechanical Hasselfors
Boomvang	mechanical and tackle Sparcraft
Primary sheet winch	2x Lewmar 48 ST
Halyard winches	2x Lewmar 40 ST
Spi-pole	aluminium
Extra info	Dehler Maindrop system replaced in 2012.



DEHLER 39



DEHLER 39



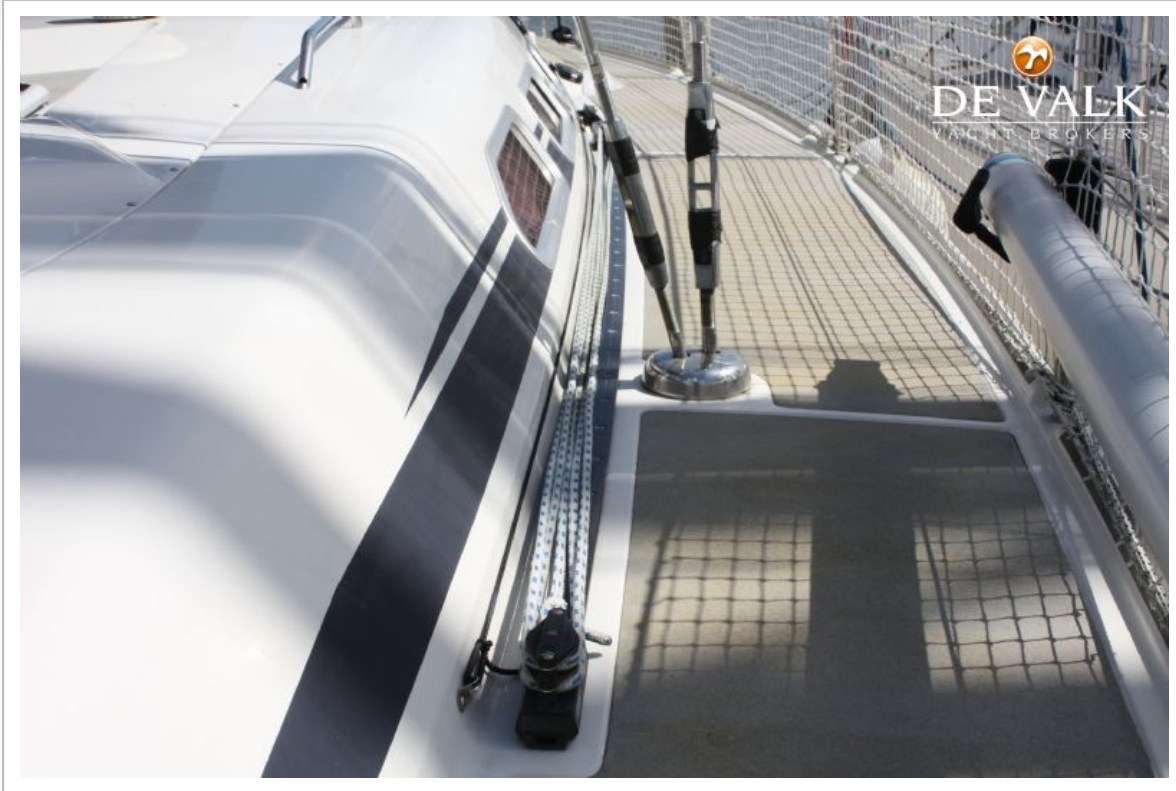
DEHLER 39



DEHLER 39



DEHLER 39





DEHLER 39

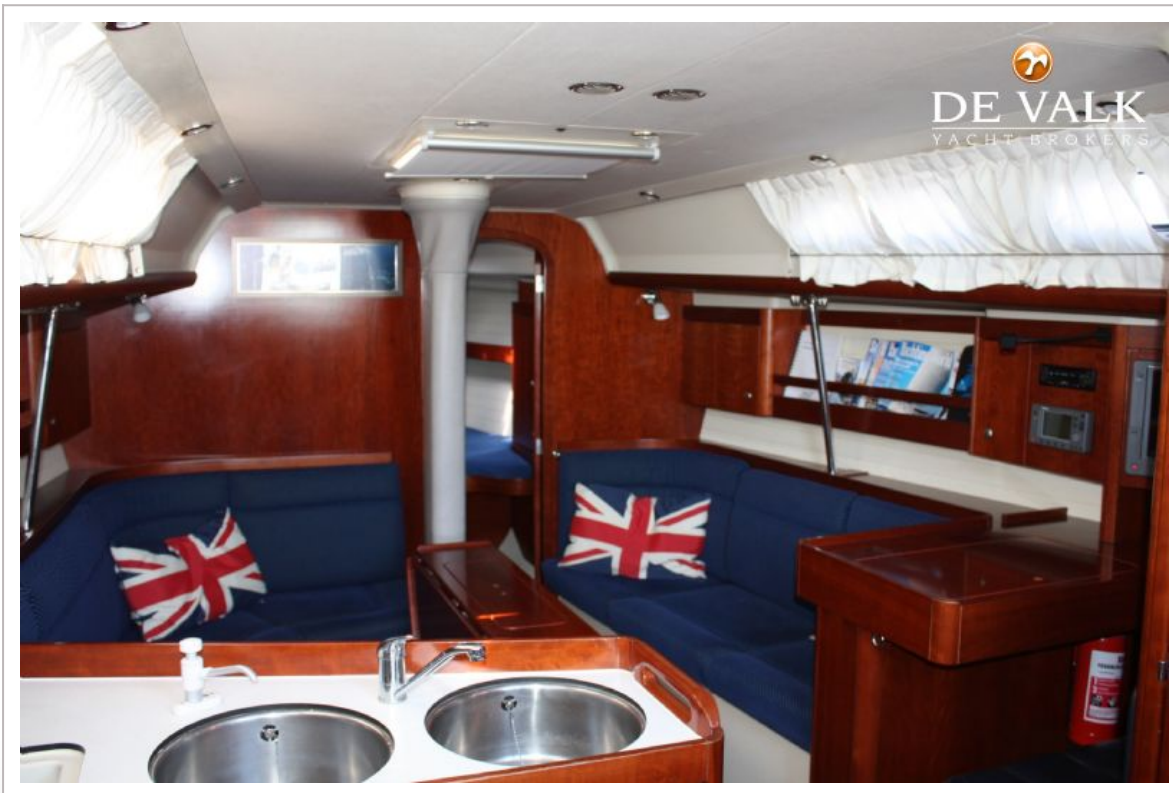




DEHLER 39



DEHLER 39



DEHLER 39



DEHLER 39



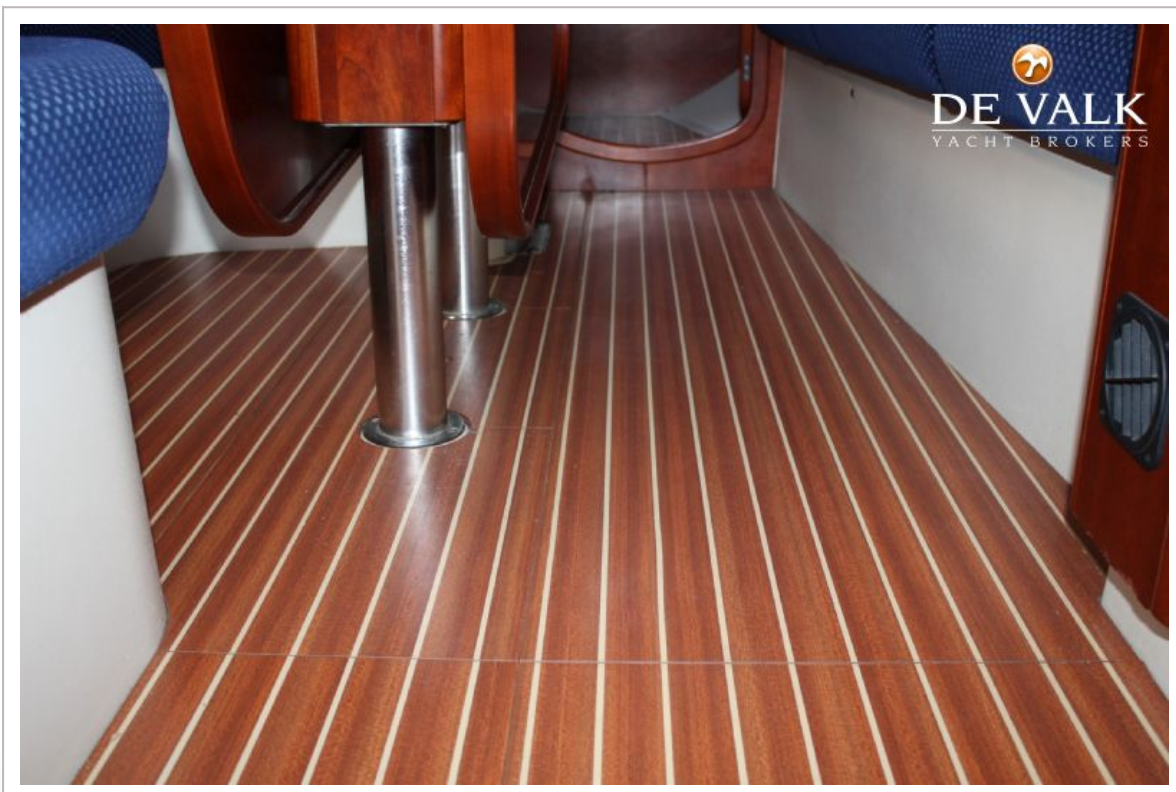
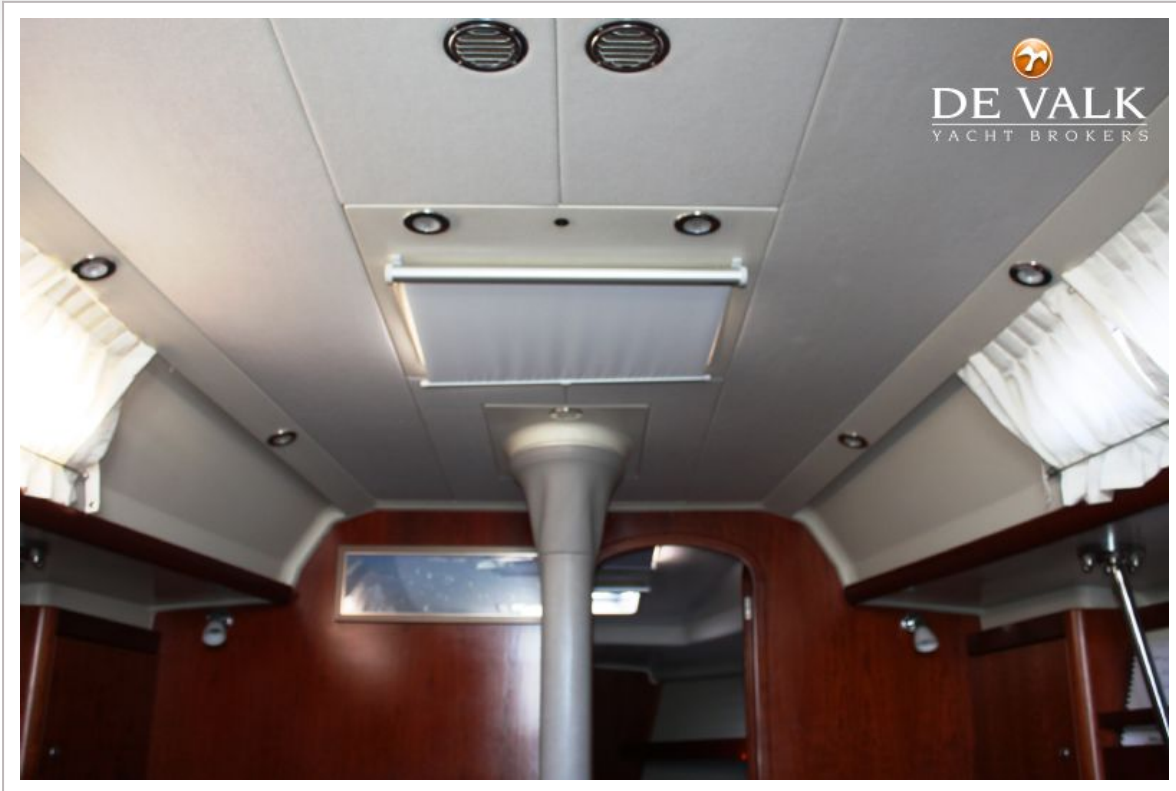
DEHLER 39

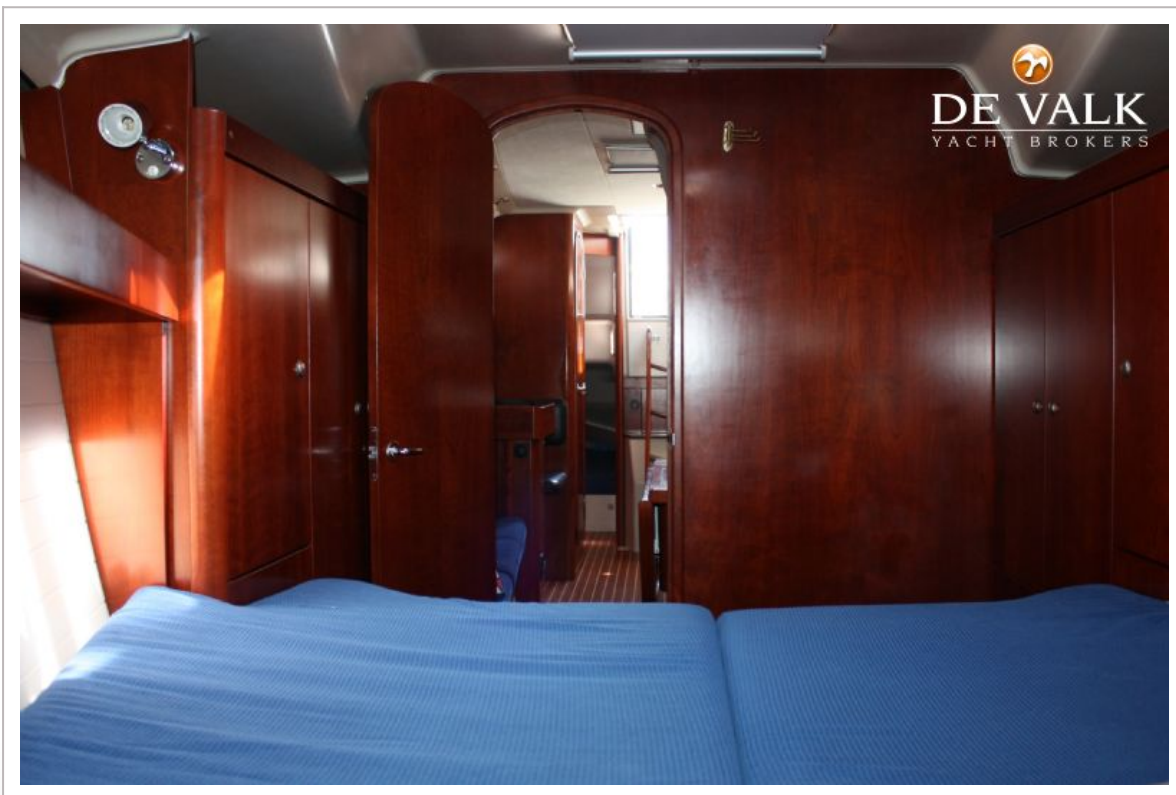


DEHLER 39



DEHLER 39





DEHLER 39



DEHLER 39



