



DE VALK
YACHT BROKERS



CAMPER & NICHOLSONS 70



DE VALK
YACHT BROKERS

BROKER'S COMMENTS

Camper & Nicholson's Ocean Going Ketch 70' "Gattopardo", an extremely safe sailing yacht capable of cruising all oceans with small crew. Already 15 years in the same family ownership and 20 years under the same captain. Ketch rigged with high cut head sail, fully battened mainsail with mizzen – all in good condition, twin Perkins diesel engines of 1990, generator and water maker. On deck a large cushioned area on saloon roof for relaxation and a spacious stern deck with room for two deck chairs.

Sander van der Voorn

SPECIFICATIONS

| | | | |
|---------------------|----------------------------|----------------|-----------------------------|
| Dimensions | 21.35 x 5.21 x 2.80 (m) | Builder | Camper & Nicholson's |
| Built | 1976 | Cabins | 3 |
| Material | GRP | Berths | 6 |
| Engine(s) | 2 x Perkins 6.3544m diesel | Hp/Kw | 2 x 135.00 (hp), 99.22 (kw) |
| Asking price | sold (VAT) | Lying | contact Monnickendam |

CONTACT

| | | | |
|---------------------|---------------------------------------|------------------|------------------------|
| Sales office | De Valk Monnickendam B.V. | Telephone | +31 (0)299 65 63 50 |
| Address | Hoogedijk 6 1145 PM Katwoude NL | E-mail | monnickendam@devalk.nl |

DISCLAIMER

These particulars are given in good faith as supplied but cannot be guaranteed.



GENERAL

| | |
|-------------------------------------|-------------------------------|
| Model | CAMPER & NICHOLSONS 70 |
| Type | sailing yacht |
| LOA (m) | 21,35 |
| LWL (m) | 16,61 |
| Beam (m) | 5,21 |
| Draft (m) | 2,80 |
| Headroom (m) | 2,30 |
| Year built | 1976 |
| Builder | Camper & Nicholson |
| Country | Great Britain |
| Designer | Camper & Nicholson |
| Displacement (t) | 58 |
| Ballast (tonnes) | cast iron and lead |
| Hull material | GRP |
| Hull colour | white |
| Hull shape | full bilged |
| Keel type | long keel |
| Superstructure material | GRP |
| Deck material | GRP |
| Deck finish | teak Needs services |
| Superstructure deck finish | teak |
| Cockpit deck finish | teak |
| Antifouling (year) | 2014 |
| Window frame | aluminium |
| Window material | tempered glass |
| Portholes | aluminium |
| Fuel tank (litre) | Total 2.800 (alu + GRP tanks) |
| Level indicator (fuel tank) | yes |
| Freshwater tank (litre) | Total 3.000 (alu + GRP tanks) |
| Level indicator (freshwater) | yes |



| | |
|-------------------------------------|----------------------------------|
| Blackwater tank (litre) | (alu + GRP tanks) |
| Level indicator (blackwater) | yes |
| Blackwater tank extraction | pump |
| Greywater tank (litre) | (alu + GRP tanks) |
| Level indicator (greywater) | yes |
| Wheel steering | hydraulic |
| Emergency tiller | yes |
| More info on paintwork | Awl Grip |
| Extra info | Wheel steering replaced in 2010. |

ACCOMMODATION

| | |
|----------------------------|---|
| Cabins | 3 |
| Berths | 6 |
| Crew cabin | yes |
| Crew berths | 3 |
| Interior | mahogany |
| Saloon | yes |
| Headroom saloon (m) | 2,3 |
| Air-conditioning | reverse cycle airco Climma Chilling System (2005) |
| Chart table | yes |
| Galley | yes |
| Countertop | marble S/S + |
| Sink | stainless steel 2 |
| Cooker | calor gas Force 10 (new) |
| Oven | yes |
| Extractor | yes |
| Gas alarm | yes |
| Microwave | yes |
| Fridge | yes |
| Freezer | Large (220V) |
| Hot water system | 220V + engine |



| | |
|------------------------------|--|
| Water pressure system | electrical |
| Dishwasher | yes |
| Coffee maker | yes |
| Crockery | yes |
| Owners cabin | twin single |
| Bed length (m) | 2,00 |
| Wardrobe | shelves and hanging |
| Bathroom | en suite |
| Toilet | |
| Toilet system | electric |
| Wash basin | |
| Shower | |
| Bath tub | |
| Guest cabin 1 | bunk bed |
| Bed length (m) | 2,00 |
| Wardrobe | hanging/drawers/shelves |
| Bathroom | en suite |
| Toilet | |
| Toilet system | electric |
| Wash basin | |
| Shower | |
| Guest cabin 2 | bunk bed |
| Bed length (m) | 2,00 |
| Wardrobe | hanging/drawers/shelves |
| Bathroom | en suite |
| Toilet | |
| Toilet system | electric |
| Wash basin | |
| Shower | |
| Crew cabin(s) | for three persons in two cabins forward with own toilet/shower |
| Washing machine | yes |



Extra info

Three double guest cabins - all with en-suite shower/toilets. Accommodation for 3 crew in two separate cabins forward with their own toilet shower. Large saloon with navigation station fully equipped with the latest navigation aids. The saloon includes a dining area with table which can host 8 guests in addition to separate sofa and Captain's desk. It has a separate well equipped galley. And there is a large cushioned area on the saloon roof for relaxation and a spacious stern deck with room for two deck chairs. Two fridge compartments (2012) + daytime drinks fridge.

MACHINERY

| | |
|--------------------------|-------------------------------|
| No of engines | 2 |
| Make | Perkins |
| Type | 6.3544m |
| HP | 135,00 |
| kW | 99,22 |
| Fuel | diesel |
| Year installed | 1990 |
| Maximum speed (kn) | 9 |
| Cruising speed (kn) | 7,5 |
| Consumption (l/hr) | 16 |
| Range (nm) | 1.000 |
| Engine cooling system | seawater |
| Engine controls | bowden cable |
| Gearbox | mechanical 2x PRM (2011) |
| Exhaust | watercooled |
| Propeller type | feathering 2x Bruntons (2000) |
| Propeller blades | 3 |
| Propeller shaft material | stainless steel |
| Shaft lubrication | water |
| Manual bilge pump | yes |
| Electric bilge pump | yes |



| | |
|--------------------------------|---|
| Bilge alarm | yes |
| Generator | silent separator Northern Lights 16 kW (2008) |
| Running hours generator | 5.000 |
| Start battery | yes |
| Service battery | yes |
| Generator battery | yes |
| Battery charger | Techpro 50 Amp |
| Inverter | Mastervolt 5500W |
| Shorepower | with cable |
| Watermaker | Technomar 160 L. per hr. (2005) |

NAVIGATION

| | |
|------------------------------------|--|
| Compass | yes |
| Forw. looking depth sounder | Garmin |
| Log | Garmin |
| Windset | Garmin |
| Repeater | yes |
| VHF | Icom S75 |
| VHF handheld | yes |
| Autopilot | Raymarine |
| Rudder angle indicator | yes |
| Radar | Furuno daylight display |
| GPS | Garmin GPS126 |
| Plotter | Garmin 4012 |
| Navtex | Nav 4 ICS |
| Personal computer | Windows with full navigation software (2014) |
| Electronic chart(s) | yes |
| EPIRB | yes |

EQUIPMENT

| | |
|------------------|-----|
| Sprayhood | yes |
|------------------|-----|



| | |
|----------------------------|---|
| Sun awning | yes |
| Cockpit cushions | yes |
| Cockpit table | yes |
| Boarding ladder | yes |
| Gangway | yes |
| Deck shower | yes |
| Anchor | CQR Plough |
| Anchor chain | Ca. 100 m / 14 mm |
| Anchor 2 | Bruce |
| Windlass | electrical Lofrans 24V |
| Deck wash | yes |
| Dinghy | rigid inflatable Avon Sportster 4m (2010) |
| Outboard | Yamaha 50 hp - 4 stroke (2010) |
| Davits | stainless steel |
| Davits controls | Electric + manual |
| Sea railing | stainless steel |
| Grab rail (superstructure) | stainless steel |
| Railing side opening gates | yes |
| Pushpit | S/S |
| Pulpit | S/S |
| Life raft | container 2x |
| Life raft (pers) | 6 + 6 |
| Last life raft survey | 2012 |
| Lifejackets | yes |
| Safety harness | yes |
| Lifebuoy | 2 |
| Horn | electric |
| Fenders | yes |
| Mooring lines | yes |
| Spare parts | yes |
| Tools | yes |
| TV | Samsung |



| | |
|-----------------------------|--|
| Radio-cd player | yes |
| DVD player | yes |
| iPod connection | yes |
| Surround Sound System | Philips |
| Sub-woofer | Clarion |
| Cockpit speakers | yes |
| Speakers in salon | yes |
| Clock - barometer | yes |
| Fire extinguisher | in every cabin and more |
| Latest extinguisher survey | 2012 |
| Extinguisher in engine room | yes |
| Extra info | The Avon Sportster tender is large enough to take six at full speed for long distance from where the boat is moored to towns etc. and is powerful enough to start a medium sized adult off on one ski; it is taken up on stern davits. |

RIGGING

| | |
|-------------------------|-------------|
| Rigging | ketch |
| Standing rigging | wire |
| Material mast | aluminium |
| Spreaders | 2 + 1 set |
| Mainsail cover | yes |
| Battcars | yes |
| Fully battened mainsail | yes |
| Mizzen | yes |
| Mizzen sailcover | yes |
| Genoa | yes |
| Staysail | yes |
| Yankee | yes |
| Reefing System | slabreefing |
| Backstay adjuster | mechanical |
| Boomvang | gasspring |



| | |
|-------------------------|------------------------------|
| Primary sheet winch | yes |
| Genoa sheetwinches | yes |
| Halyard winches | yes |
| Reefing winch | yes |
| Multifunctional winches | yes |
| Jockey-pole | aluminium |
| Extra info | Sails are in good condition. |





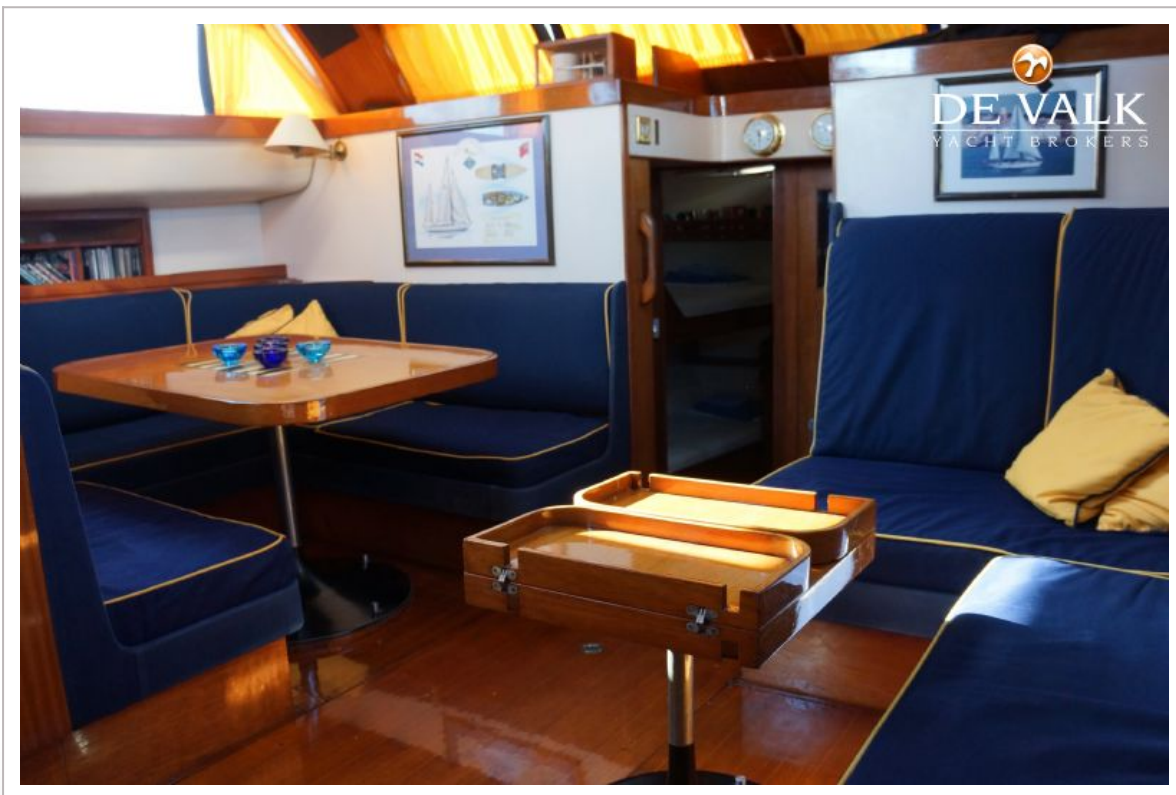




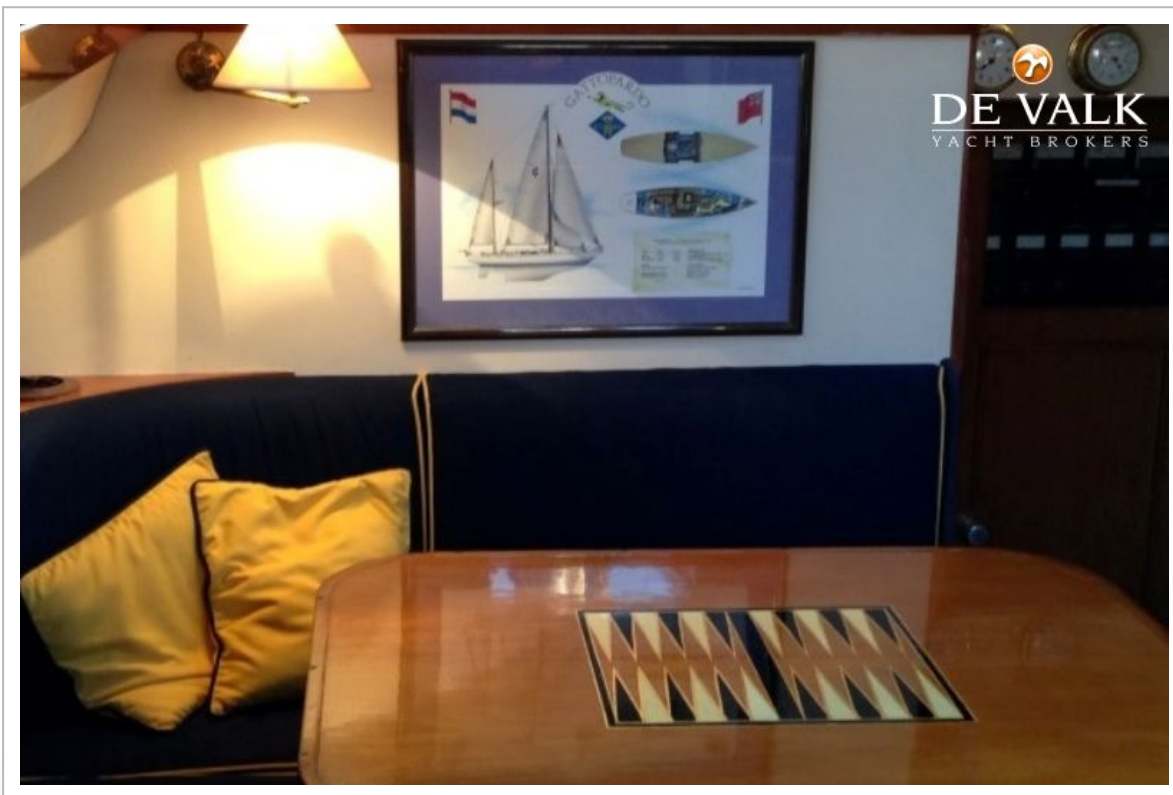




CAMPER & NICHOLSONS 70

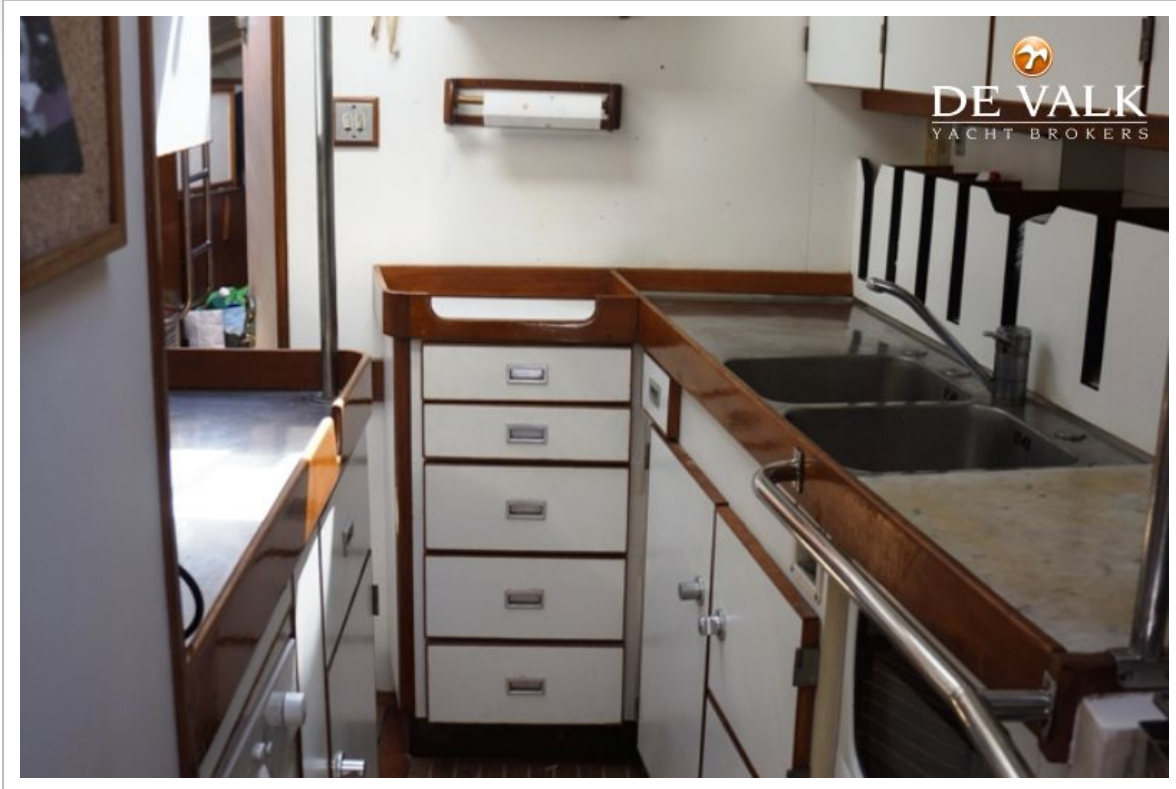


CAMPER & NICHOLSONS 70



CAMPER & NICHOLSONS 70







CAMPER & NICHOLSONS 70

