



DE VALK
YACHT BROKERS



VICTOIRE 1044



DE VALK
YACHT BROKERS

BROKER'S COMMENTS

Reinier van der Wolf

SPECIFICATIONS

Dimensions	10.80 x 3.24 x 1.90 (m)	Builder	Jachtwerf Victoire, Alkmaar
Built	2005	Cabins	2
Material	GRP	Berths	6
Engine(s)	1 x Volvo Penta MD2030 -D BT diesel	Hp/Kw	29.00 (hp), 21.32 (kw)
Asking price	sold (VAT)	Lying	at sales office

CONTACT

Sales office	De Valk Monnickendam B.V.	Telephone	+31 (0)299 65 63 50
Address	Hoogedijk 6 1145 PM Katwoude NL	E-mail	monnickendam@devalk.nl

DISCLAIMER

These particulars are given in good faith as supplied but cannot be guaranteed.



VICTOIRE 1044

GENERAL

Model	VICTOIRE 1044
Type	sailing yacht
LOA (m)	10,80
LWL (m)	8,40
Beam (m)	3,24
Draft (m)	1,90
Air draft (m)	15,00
Headroom (m)	1,90
Year built	2005
Builder	Jachtwerf Victoire, Alkmaar
Country	The Netherlands
Designer	Dick Koopmans sr.
Displacement (t)	5,58
Ballast (tonnes)	2,75
CE norm	A
Hull material	GRP
Hull colour	blue Marine
Hull shape	round-bilged
Keel type	fin keel with bulb Cast iron
Rubbing strake	Teak with S.S.
Deck material	GRP
Deck finish	non-skid moulded in
Cockpit deck finish	teak
Antifouling (year)	Seatender
Dorades	2 X
Window frame	aluminium
Window material	polycarbonate
Deckhatch	2 x
Fuel tank (litre)	stainless steel 80
Freshwater tank (litre)	stainless steel 2 x 175



Wheel steering	
Emergency tiller	yes
More info on hull	Highest Yard / Hull number: 133, which makes her the youngest V-1044 in the world.
Extra info	Steering wheel covered with Reindeer leather, also 10 cm on the spokes
Extra info	yes

ACCOMMODATION

Cabins	2
Berths	6
Interior	teak
Layout	Classic
Floor	teak and holly
Heating	diesel ducted hot air Webasto air top 3500
Chart table	yes
Aft Cabin	yes
Opening door to cockpit	yes
Galley	yes
Countertop	
Sink	stainless steel
Cooker	calor gas
Oven	yes
Fridge	Water cooled, 3250 SP ASU
Water pressure system	electrical
Manual and/or foot pump	yes
Owners cabin	v-bed
Wardrobe	hanging and shelves
Guest cabin 1	double bed
Wardrobe	hanging and shelves
Bathroom	shared
Toilet	shared RM Sealock



Toilet system	manual
Wash basin	in the bathroom
Shower	shared

MACHINERY

No of engines	1
Make	Volvo Penta
Type	MD2030 -D BT
HP	29
kW	21,32
Fuel	diesel
Year installed	2005
Maximum speed (kn)	7,4
Cruising speed (kn)	6
Engine cooling system	freshwater heat exchanger
Drive	sail-drive
Engine controls	bowden cable
Gearbox	mechanical
Exhaust	watercooled
Propeller type	folding
Propeller blades	2
Manual bilge pump	yes
Electrical installation	12/220 V
Start battery	85 Ah
Service battery	105 Ah
Battery monitor	yes
Battery charger	Mastervolt
Shorepower	with cable
Extra info	Double shore power connection with safety relais; one is a long cable. The other one is a short cable.



NAVIGATION

Compass	Plastimo
Electric compass	Raymarine ST 60
Depth sounder	Raymarine ST 60
Log	Raymarine ST 60
Windset	Raymarine ST 60
VHF	Simrad RS 82 + Atis
Autopilot	Autohelm ST 4000
GPS	Raymarine
Plotter	Raymarine - chart update 2019
Navigation lights	yes
Extra info	Autohelm new E-Drive 2019. The log reads 3.000 Nm.

EQUIPMENT

Sprayhood	2012
Sprayhood with grab rail	grab rail with Reindeer leather covered safety grip
Cockpit table	yes
Boarding ladder	stainless steel Teak steps +
Anchor	Danforth
Anchor chain	yes
Anchor 2	Umbrella folding
Anchor chain	yes
Sea railing	wire
Pushpit	yes
Pulpit	yes
Safety lines on deck	place in length over deck
Radar reflector	yes
Fenders	yes
Mooring lines	4 x with dampers + many extra lines
Radio-cd player	yes
Speakers in salon	yes



RIGGING

Rigging	cutter
Standing rigging	wire
Brand mast	Seldén
Material mast	aluminium
Spreaders	2 x
Mainsail	with Dutchmansystem De Vries
Mainsail cover	yes
Fully battened mainsail	4 battens
Cutterstay	yes
Genoa I	with UV protection De Vries
Genoa II	with UV protection De Vries - 2019
Genoa furler	Furlex 200 S
Cutter furler	Furlex 200 S
Reefing System	yes
Boomvang	gasspring Rodkicker 10
Secondary sheet winch	2 x Andersen 28 st two speed
Genoa sheetwinches	2 x Andersen 46 st two speed
Halyard winches	2 x Andersen 12 st single speed
Reefing winch	1 x Andersen 10 single speed
Multifunctional winches	1 x Andersen 12 st single speed
Winchcovers	yes
Extra info	Diamond shape standing rigging, fixed backstays, standing top and lower rigging Dyform wire. Mainsail with Dutchman system + batten cars with bearings.



VICTOIRE 1044



VICTOIRE 1044



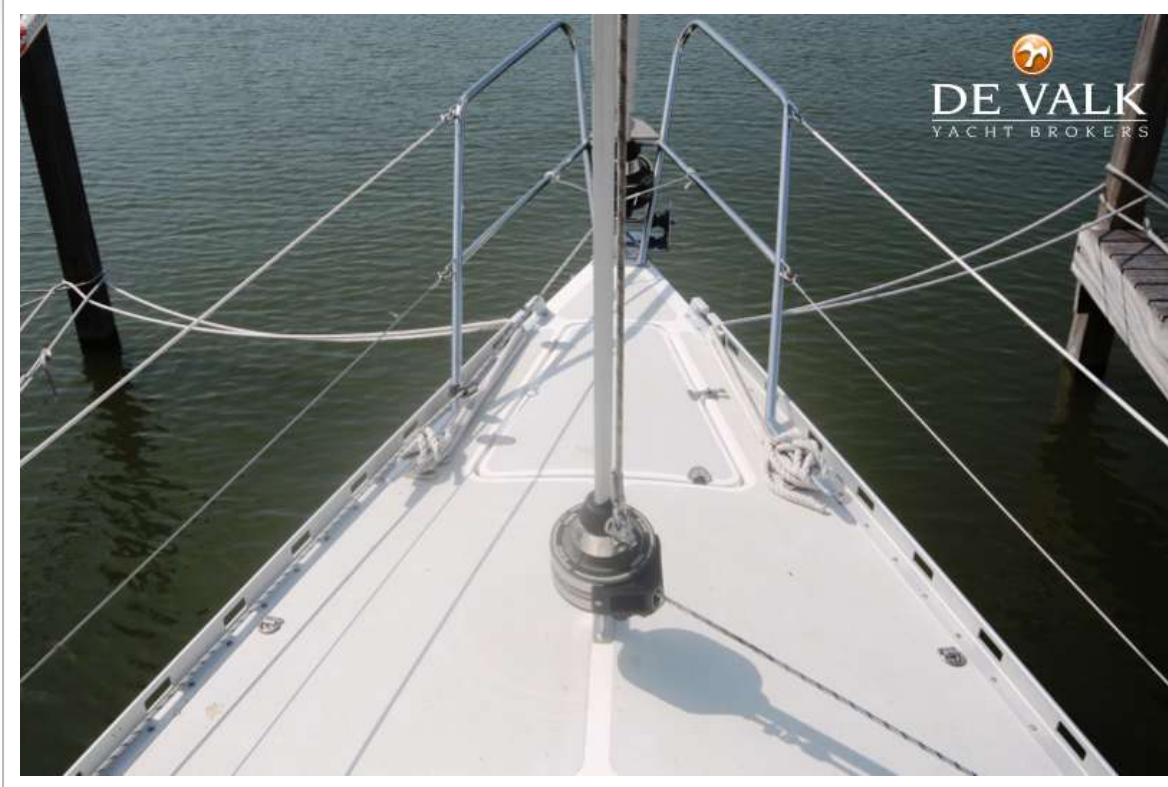
VICTOIRE 1044



VICTOIRE 1044



VICTOIRE 1044



VICTOIRE 1044



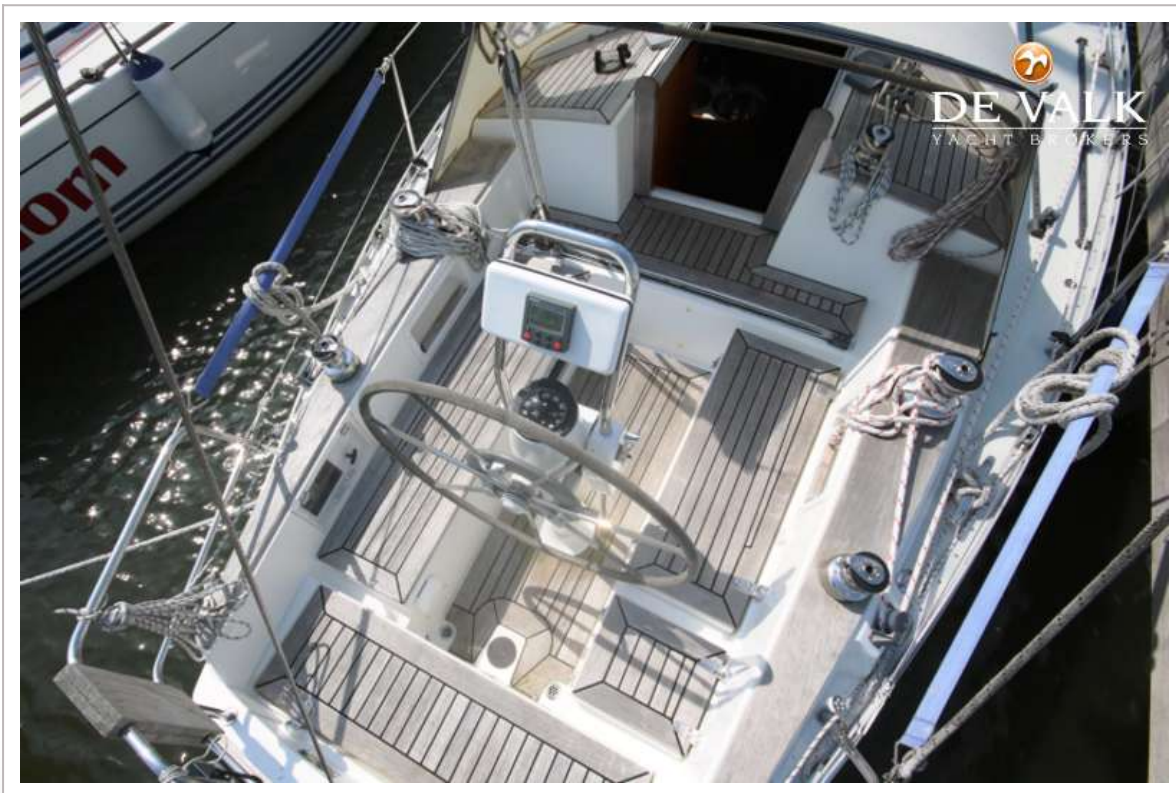
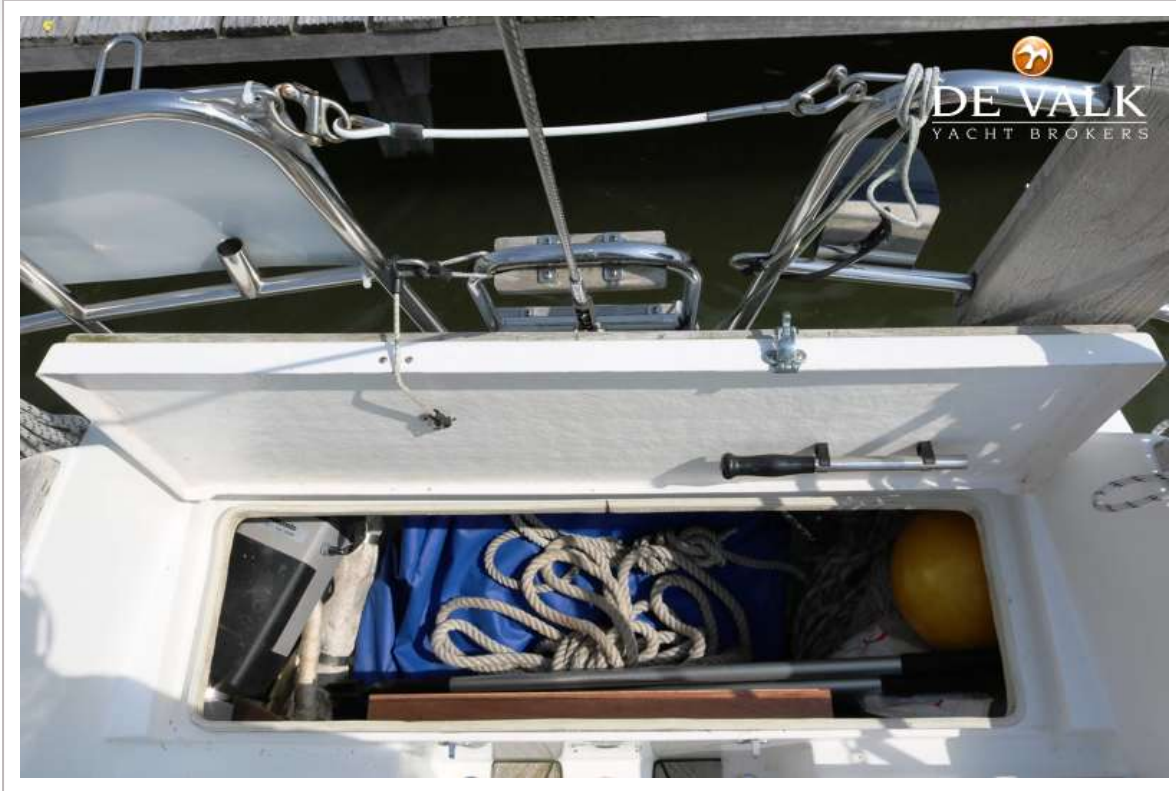
VICTOIRE 1044



VICTOIRE 1044



VICTOIRE 1044



VICTOIRE 1044



VICTOIRE 1044



VICTOIRE 1044



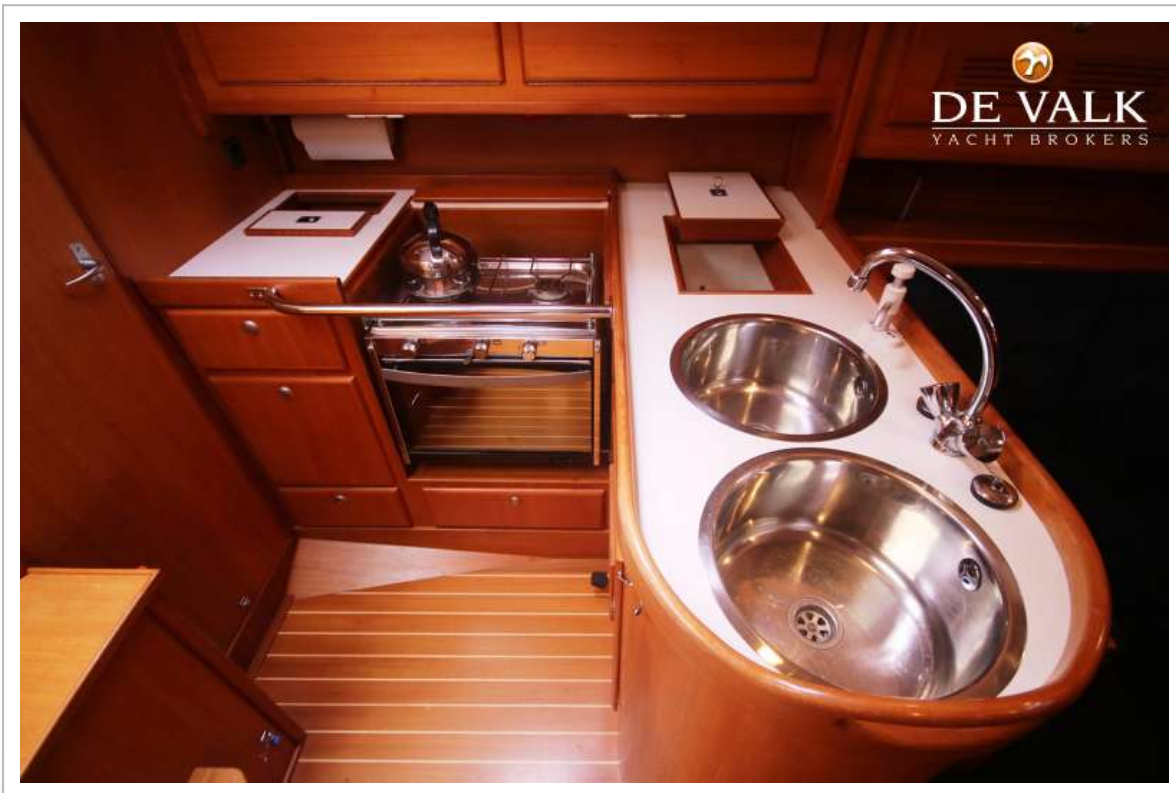
VICTOIRE 1044



VICTOIRE 1044



VICTOIRE 1044



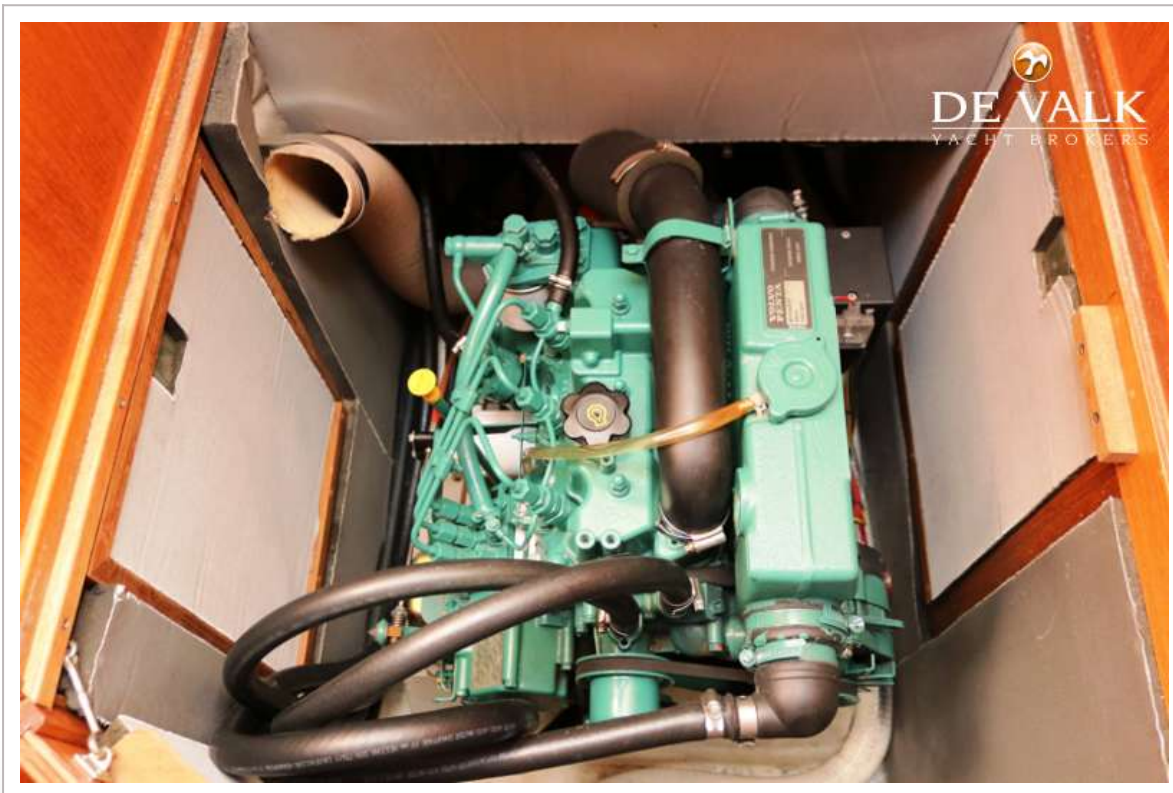
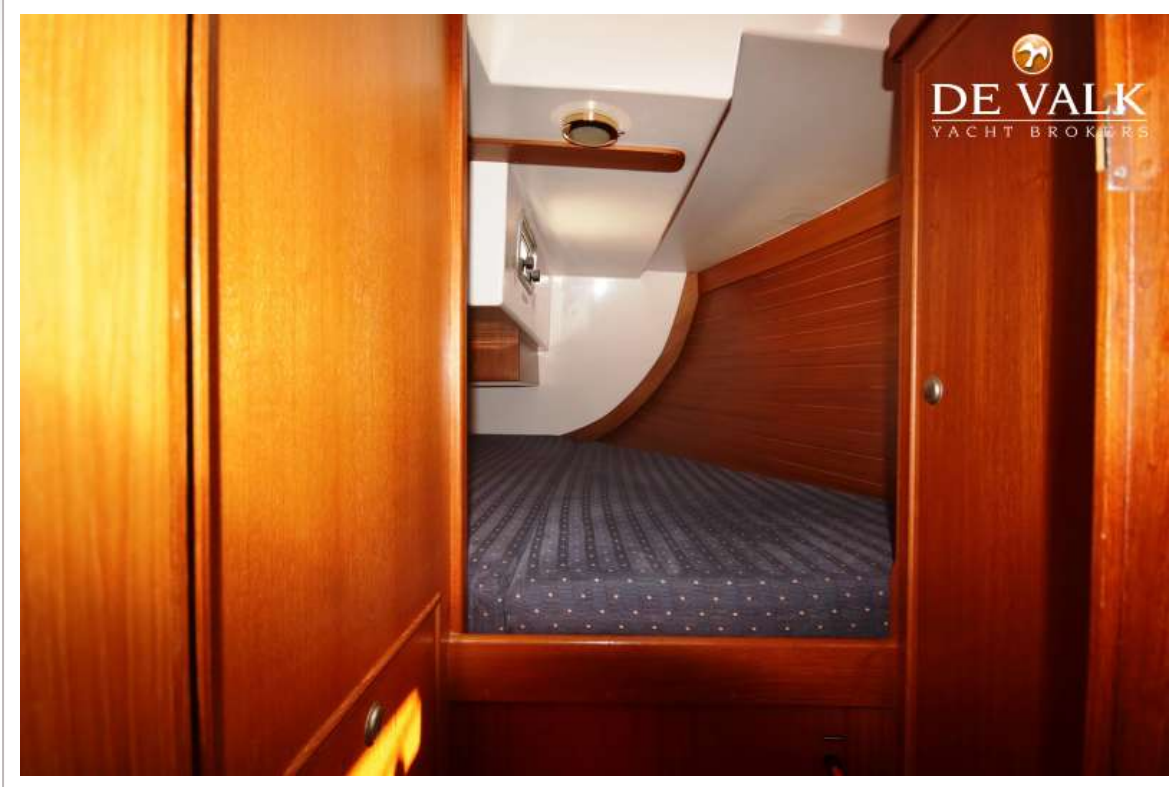
VICTOIRE 1044



VICTOIRE 1044



VICTOIRE 1044



VICTOIRE 1044

