



DE VALK  
YACHT BROKERS



## JEANNEAU SUN ODYSSEY 49



DE VALK  
YACHT BROKERS

# JEANNEAU SUN ODYSSEY 49

## BROKER'S COMMENTS

This Jeanneau Sun Odyssey 49 is a very well kept, good performing and easy to sail (and maneuverable) yacht. This due to her recent sails, E-winchies, well proportioned engine with feathering prop, bow-thruster and many more goodies. The interior offers lots of space with a 3-cabin lay out and two head rooms. In the hands of her 3th private owner she is ready for the next stage. Follow the virtual tour at:  
<https://roundme.com/tour/248223/view/726782>

*Ger Bayens*

## SPECIFICATIONS

<b>Dimensions</b>	14.98 x 4.49 x 2.15 (m)	<b>Builder</b>	Chantiers Jeanneau
<b>Built</b>	2004	<b>Cabins</b>	3
<b>Material</b>	GRP	<b>Berths</b>	6
<b>Engine(s)</b>	1 x Yanmar 4JH3 HTE diesel	<b>Hp/Kw</b>	100.00 (hp), 73.00 (kw)
<b>Asking price</b>	sold (VAT )	<b>Lying</b>	at sales office

## CONTACT

<b>Sales office</b>	De Valk Sint Annaland	<b>Telephone</b>	+31 166 601 000
<b>Address</b>	Koelhuisweg 4 4697 RM Sint Annaland The Netherlands	<b>E-mail</b>	sintannaland@devalk.nl

## DISCLAIMER

These particulars are given in good faith as supplied but cannot be guaranteed.



## GENERAL

<b>Model</b>	JEANNEAU SUN ODYSSEY 49
<b>Type</b>	sailing yacht
<b>LOA (m)</b>	14,98
<b>LWL (m)</b>	12,98
<b>Beam (m)</b>	4,49
<b>Draft (m)</b>	2,15
<b>Air draft (m)</b>	21,00
<b>Headroom (m)</b>	2,00
<b>Year built</b>	2004
<b>Builder</b>	Chantiers Jeanneau
<b>Country</b>	France
<b>Designer</b>	Philippe Briand
<b>Displacement (t)</b>	12,7
<b>Ballast (tonnes)</b>	cast iron 3,8
<b>CE norm</b>	A
<b>Hull material</b>	GRP
<b>Hull colour</b>	white
<b>Hull shape</b>	round-bilged
<b>Keel type</b>	fin keel
<b>Superstructure material</b>	GRP
<b>Rubbing strake</b>	stainless steel
<b>Deck material</b>	GRP
<b>Deck finish</b>	teak
<b>Cockpit deck finish</b>	teak
<b>Window frame</b>	aluminium
<b>Window material</b>	polycarbonate
<b>Deckhatch</b>	yes
<b>Portholes</b>	aluminium
<b>Fuel tank (litre)</b>	polyethylene 240
<b>Level indicator (fuel tank)</b>	yes



<b>Freshwater tank (litre)</b>	polyethylene 700 in 3 tanks
<b>Wheel steering</b>	mechanical 2x
<b>Emergency tiller</b>	yes
<b>Extra info</b>	No waste tank
<b>Extra info</b>	All thru-hull fittings are renewed 2016

## ACCOMMODATION

<b>Cabins</b>	3
<b>Berths</b>	6
<b>Interior</b>	teak
<b>Layout</b>	Saloon, 3 cabins, two heads
<b>Floor</b>	teak and holly
<b>Saloon</b>	yes
<b>Headroom saloon (m)</b>	2,00
<b>Heating</b>	diesel ducted hot air Webasto
<b>Heating 2</b>	diesel ducted hot air Webasto
<b>Navigation center</b>	yes
<b>Chart table</b>	yes
<b>Aft Cabin</b>	2x
<b>Dinette</b>	yes
<b>Galley</b>	yes
<b>Countertop</b>	plastic
<b>Sink</b>	stainless steel
<b>Cooker</b>	calor gas ENO 4-flame
<b>Oven</b>	ENO
<b>Microwave</b>	Micromat
<b>Fridge</b>	Frigoboat
<b>Freezer</b>	Frigoboat
<b>Hot water system</b>	220V + engine
<b>Water pressure system</b>	electrical
<b>Manual and/or foot pump</b>	foot



# JEANNEAU SUN ODYSSEY 49

Owners cabin	French bed
Bed length (m)	2,00
Wardrobe	hanging/drawers/shelves
Bathroom	en suite
Toilet	en suite
Toilet system	manual
Wash basin	at the toilet
Shower	en suite
Guest cabin 1	double bed
Bed length (m)	2,00
Wardrobe	hanging and shelves
Bathroom	en suite
Toilet	en suite
Toilet system	manual
Wash basin	at the toilet
Shower	en suite
Guest cabin 2	double bed
Bed length (m)	2,00
Wardrobe	hanging and shelves
Bathroom	shared
Washing machine	Eumenia

## MACHINERY

No of engines	1
Make	Yanmar
Type	4JH3 HTE
HP	100,00
kW	73,00
Fuel	diesel
Year installed	2004
Maximum speed (kn)	8,00



# JEANNEAU SUN ODYSSEY 49

<b>Cruising speed (kn)</b>	6,00
<b>Consumption (l/hr)</b>	5,00
<b>Engine hours</b>	1410
<b>Engine cooling system</b>	freshwater heat exchanger
<b>Drive</b>	shaft
<b>Shaft seal</b>	yes
<b>Engine controls</b>	bowden cable
<b>Gearbox</b>	mechanical
<b>Bowthruster</b>	electric Max Power
<b>Propeller type</b>	feathering
<b>Propeller blades</b>	3x
<b>Propeller shaft material</b>	stainless steel
<b>Shaft lubrication</b>	water
<b>Manual bilge pump</b>	yes
<b>Electric bilge pump</b>	yes
<b>Electrical installation</b>	12/230V
<b>Generator</b>	wet exhaust Vetus 6KVH in soundbox
<b>Running hours generator</b>	61
<b>Batteries</b>	yes
<b>Start battery</b>	1x 115 AH
<b>Service battery</b>	4x 115 AH
<b>Battery charger</b>	Cristec 60 Ampp/h
<b>Inverter</b>	Mastervolt 12/220/1200
<b>Shorepower</b>	with cable

## NAVIGATION

<b>Compass</b>	2x Plastimo Olympic 135
<b>Electric compass</b>	at Autopilot
<b>Depth sounder</b>	Raymarine ST 60
<b>Log</b>	Raymarine ST 60
<b>Windset</b>	Raymarine ST 60



<b>Repeater</b>	at chart table Raymarine ST 60 Multi
<b>VHF</b>	Raymarine 270F
<b>Autopilot</b>	with remote control Raymarine ST 6001
<b>Rudder angle indicator</b>	At auto pilot
<b>Radar/GPS/plotter</b>	Raymarine RL80C
<b>Navtex</b>	No aerial available
<b>Wifi antenna</b>	yes
<b>AIS receiver</b>	2015
<b>AIS transponder</b>	yes

## EQUIPMENT

<b>Sprayhood with grab rail</b>	yes
<b>Cockpit cover</b>	yes
<b>Bimini</b>	yes
<b>Cockpit table</b>	yes
<b>Bathing platform</b>	yes
<b>Boarding ladder</b>	stainless steel
<b>Anchor</b>	Rocna
<b>Anchor chain</b>	and line
<b>Windlass</b>	electrical Lofrance
<b>Davits</b>	stainless steel
<b>Sea railing</b>	wire
<b>Grab rail (superstructure)</b>	teak
<b>Railing side opening gates</b>	2x
<b>Pushpit</b>	yes
<b>Pulpit</b>	yes
<b>Life raft</b>	container 6 person
<b>Last life raft survey</b>	Januari 2016
<b>Danbuoy</b>	yes
<b>Rope cutter</b>	yes
<b>Radar reflector</b>	yes



<b>Fenders</b>	yes
<b>Mooring lines</b>	yes
<b>Radio-cd player</b>	Kenwood
<b>Cockpit speakers</b>	yes
<b>Speakers in salon</b>	yes

## RIGGING

<b>Rigging</b>	fractional 9/10th
<b>Standing rigging</b>	wire
<b>Brand mast</b>	Sparcraft
<b>Material mast</b>	aluminium
<b>Spreaders</b>	2 sets
<b>Mainsail cover</b>	yes
<b>Battcars</b>	Harken
<b>Fully battened mainsail</b>	UK Cruising Laminate (2012)
<b>Genoa II</b>	UK Cruising Laminate Shaptape (2013)
<b>Genoa furler</b>	under deck Facnor
<b>Spinnaker</b>	yes
<b>Removable innerforestay</b>	for stormjib with hanks
<b>Stormjib</b>	yes
<b>Reefing System</b>	slabreefing
<b>Backstay adjuster</b>	hydraulic Sailtech
<b>Boomvang</b>	mechanical and tackle
<b>Primary sheet winch</b>	electric 2x Harken 60.2 EST
<b>Secondary sheet winch</b>	manuel & electric 1x Harken ST, 1x EST
<b>Winchcovers</b>	yes
<b>Spi-pole</b>	aluminium





# JEANNEAU SUN ODYSSEY 49



# JEANNEAU SUN ODYSSEY 49



# JEANNEAU SUN ODYSSEY 49



# JEANNEAU SUN ODYSSEY 49



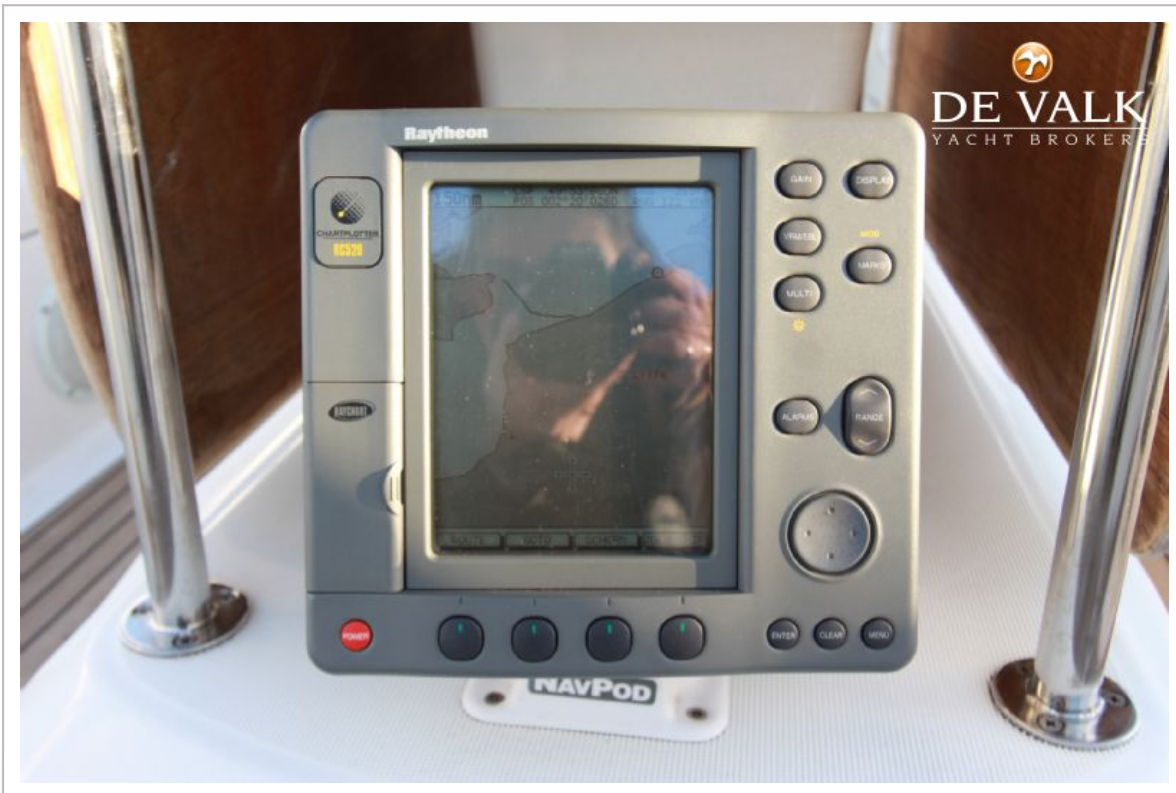


# JEANNEAU SUN ODYSSEY 49



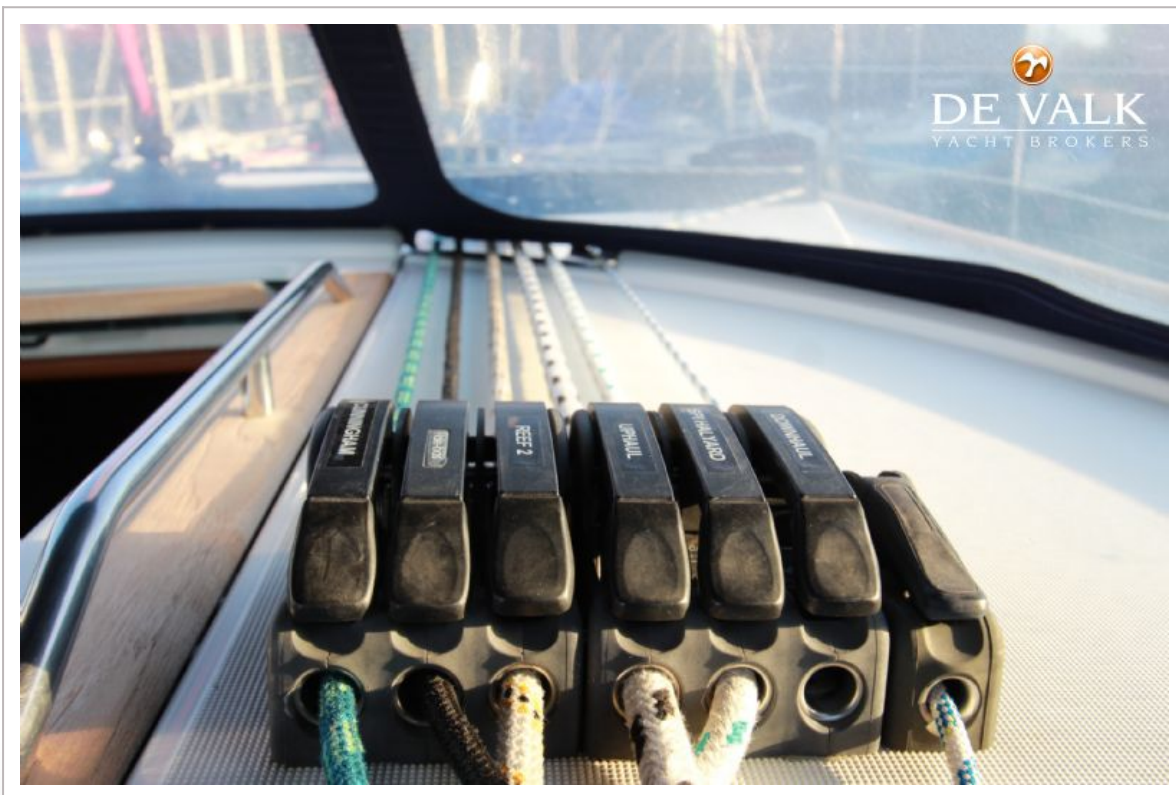


# JEANNEAU SUN ODYSSEY 49





# JEANNEAU SUN ODYSSEY 49



# JEANNEAU SUN ODYSSEY 49



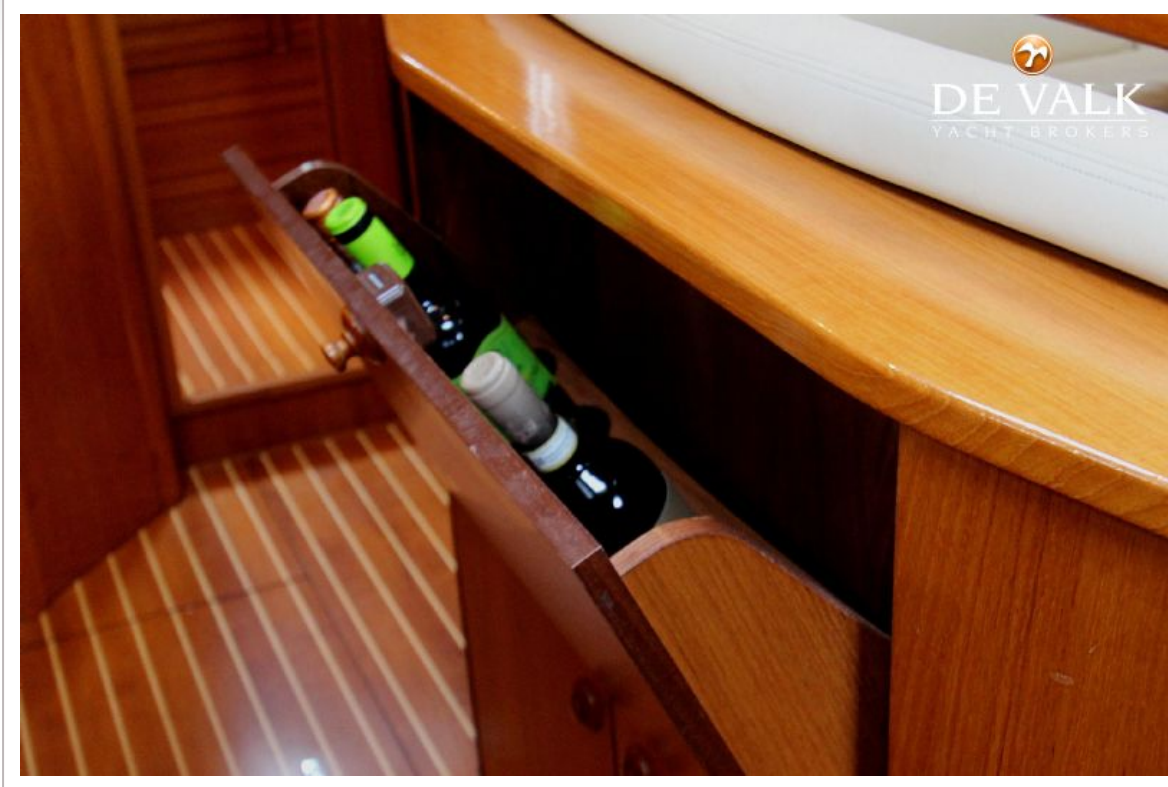
# JEANNEAU SUN ODYSSEY 49

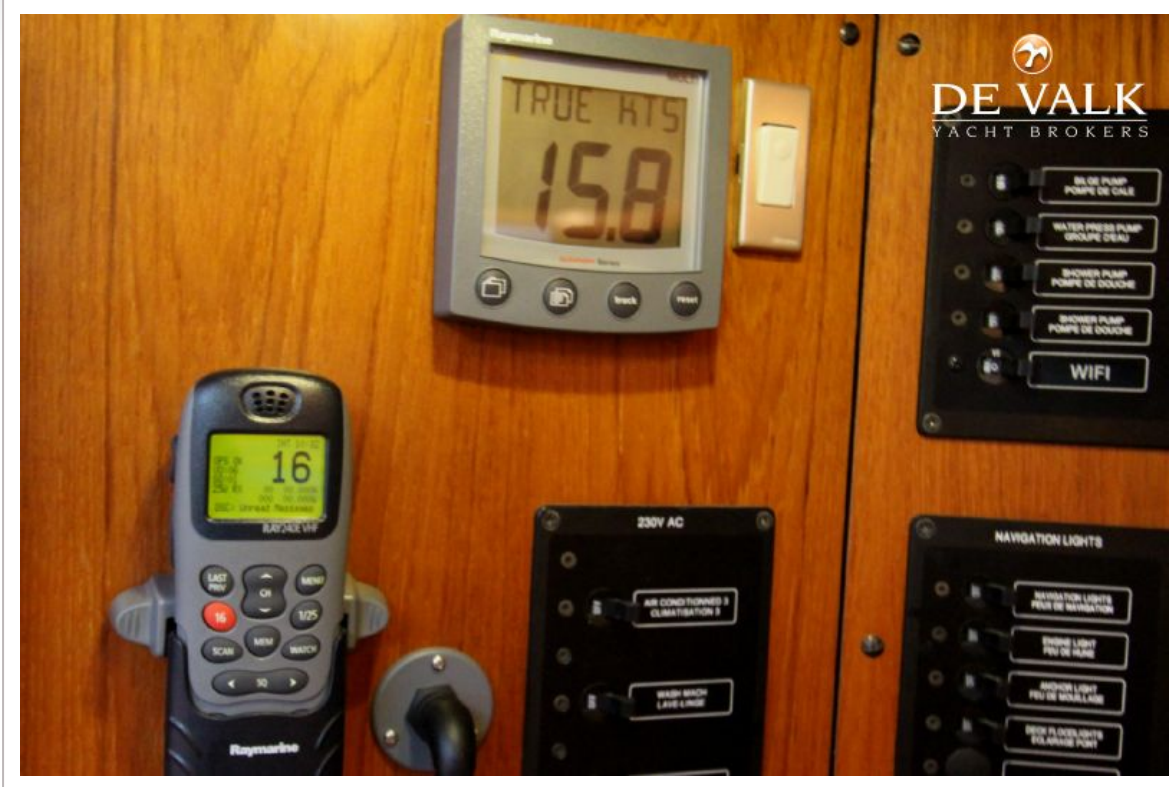


# JEANNEAU SUN ODYSSEY 49

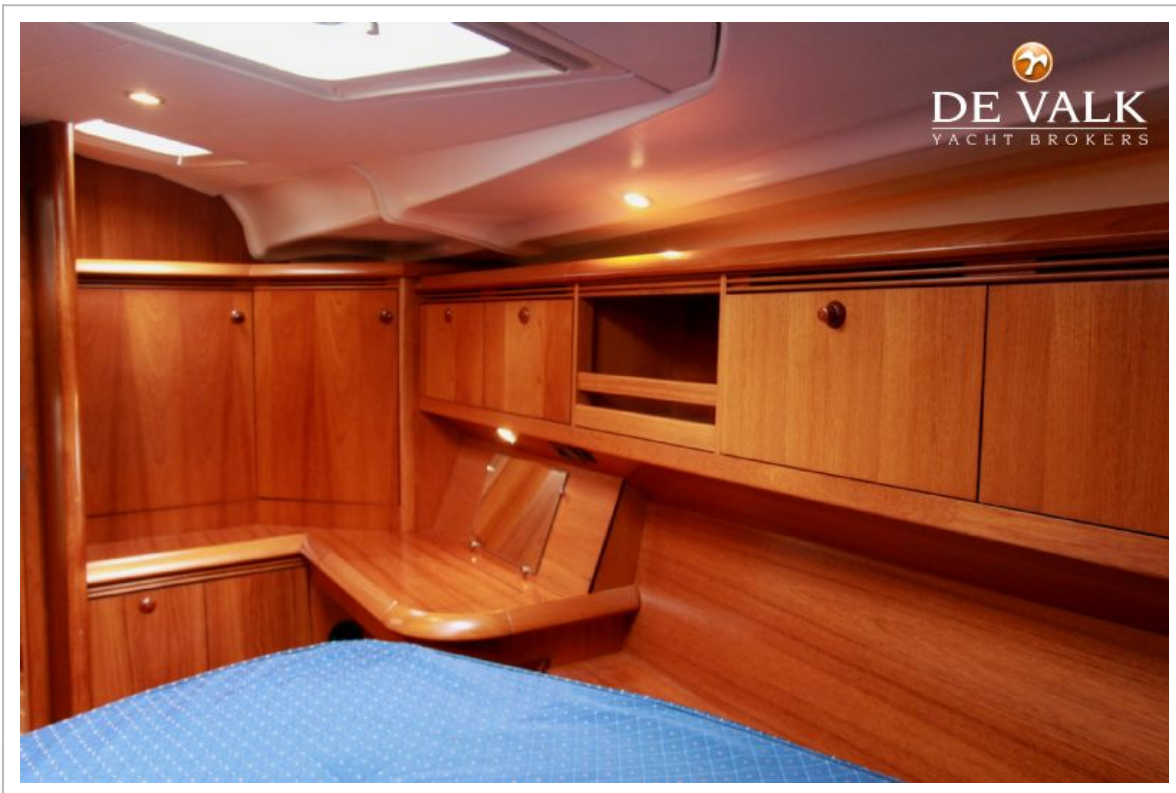


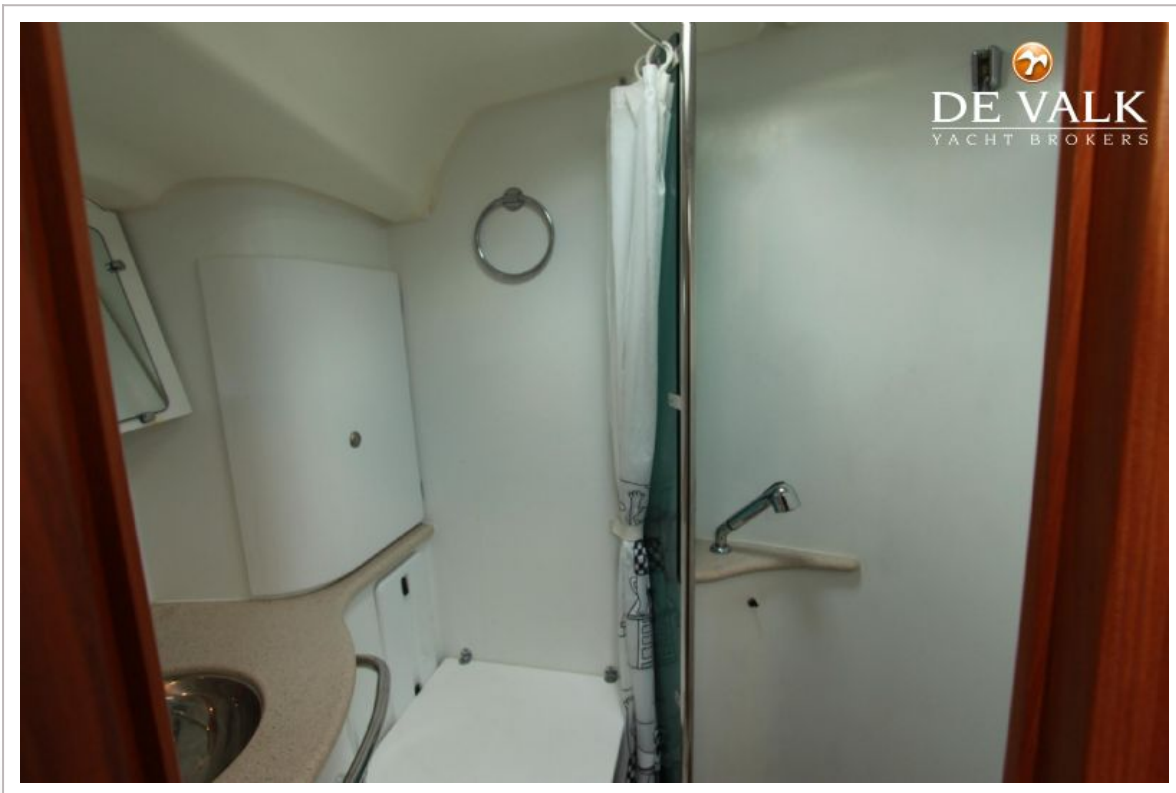
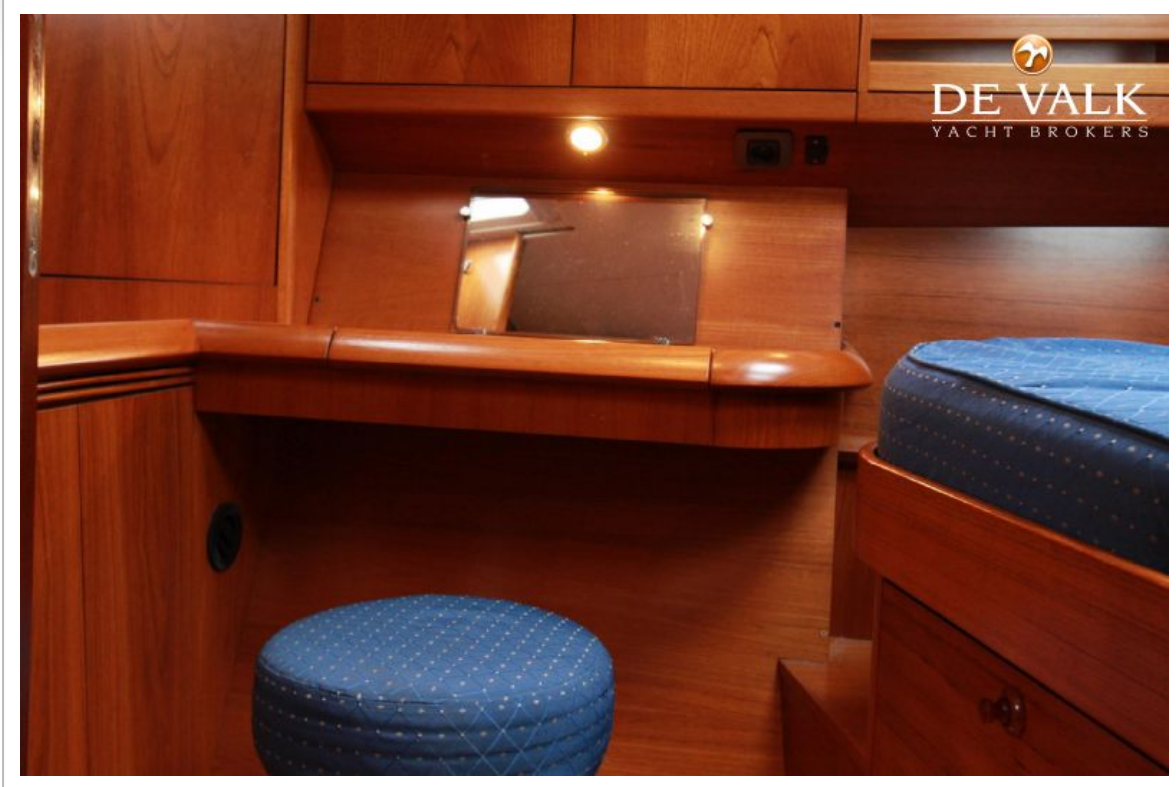
# JEANNEAU SUN ODYSSEY 49





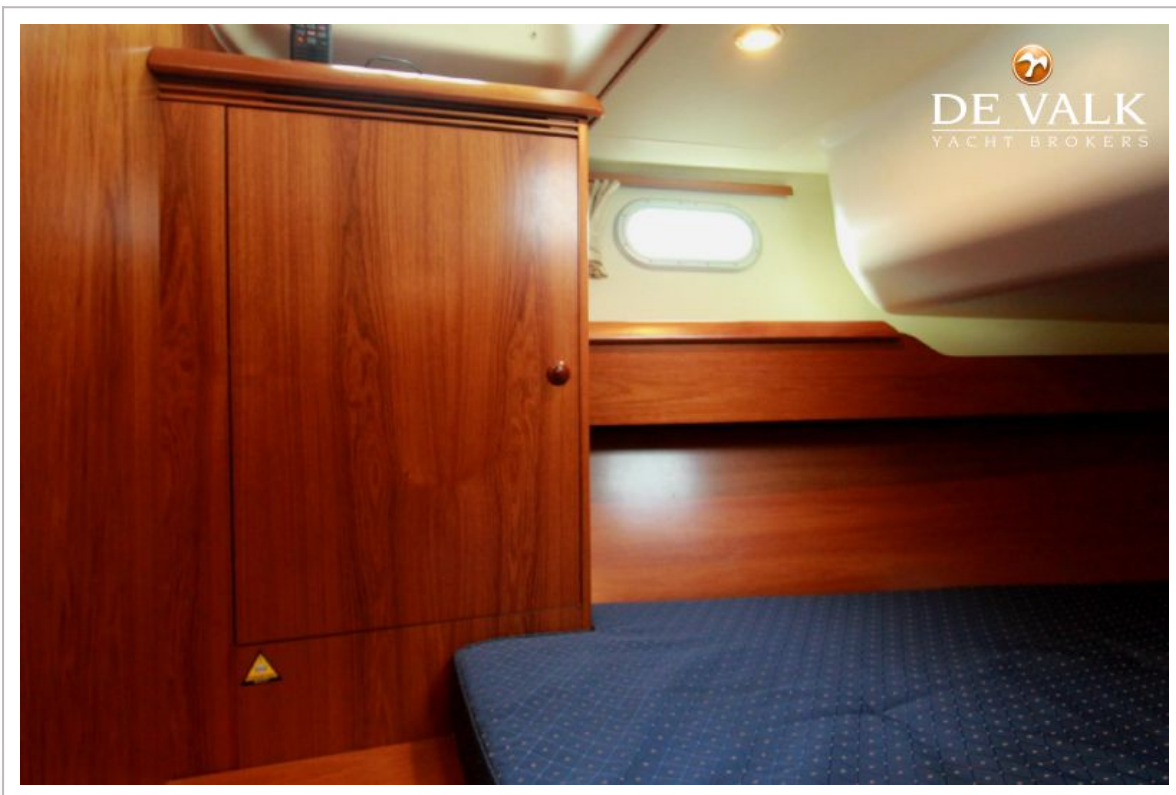
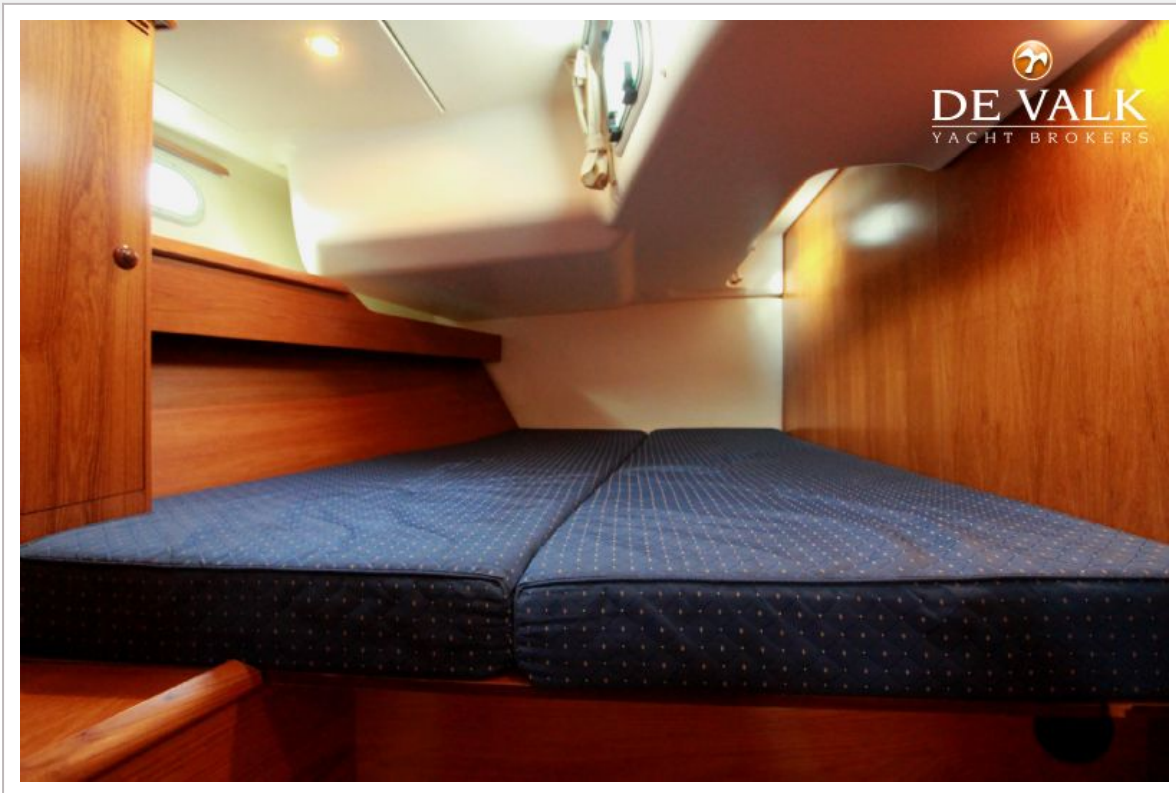
# JEANNEAU SUN ODYSSEY 49







# JEANNEAU SUN ODYSSEY 49



# JEANNEAU SUN ODYSSEY 49



# JEANNEAU SUN ODYSSEY 49



