



DE VALK
YACHT BROKERS



BAVARIA 38 OCEAN



DE VALK
YACHT BROKERS

BAVARIA 38 OCEAN

BROKER'S COMMENTS

Perfectly maintained Bavaria 38 Ocean with a flexiteek deck, electrical winches, electric anchor winch and a bowthruster. Below decks is comfort a paramount. Good headroom everywhere and plenty of storage space. The 'Center Cockpit' design provides for an excellent owners cabin which is very spacious, with a French bed and cabinets on both sides. Also there is a large wet room and the saloon has a large galley with stove and refrigerator. This ship is built in the time that Bavaria paid real attention to a beautiful finish.

Sander van der Voorn

SPECIFICATIONS

Dimensions	11.90 x 3.95 x 1.95 (m)	Builder	Bavaria Yachtbau GmbH
Built	1999	Cabins	2
Material	GRP	Berths	6
Engine(s)	1 x Volvo Penta MD22L diesel	Hp/Kw	50.00 (hp), 36.75 (kw)
Asking price	sold (VAT)	Lying	at sales office

CONTACT

Sales office	De Valk Monnickendam B.V.	Telephone	+31 (0)299 65 63 50
Address	Hoogedijk 6 1145 PM Katwoude NL	E-mail	monnickendam@devalk.nl

DISCLAIMER

These particulars are given in good faith as supplied but cannot be guaranteed.



GENERAL

Model	BAVARIA 38 OCEAN
Type	sailing yacht
LOA (m)	11,90
LWL (m)	9,95
Beam (m)	3,95
Draft (m)	1,95
Air draft (m)	16,95
Headroom (m)	1,92
Year built	1999
Builder	Bavaria Yachtbau GmbH
Country	Germany
Designer	J&J Design
Displacement (t)	8,2
Ballast (tonnes)	lead 2,9
CE norm	A
Hull material	GRP
Hull colour	white
Hull shape	round-bilged
Keel type	fin keel
Superstructure material	GRP
Rubbing strake	stainless steel
Deck material	GRP
Deck finish	Flexiteek (2012)
Superstructure deck finish	anti-slip moulded in
Cockpit deck finish	teak
Antifouling (year)	2016
Dorades	yes
Window frame	aluminium
Window material	perspex
Deckhatch	yes



Portholes	aluminium
Fuel tank (litre)	polyethylene 260
Level indicator (fuel tank)	yes
Freshwater tank (litre)	polyethylene 420
Level indicator (freshwater)	yes
Blackwater tank (litre)	(2010)
Blackwater tank extraction	pump (2010)
Wheel steering	cable steering
Emergency tiller	yes
Extra info	Pump sump tank requires maintenance.

ACCOMMODATION

Cabins	2
Berths	6
Interior	mahogany
Floor	teak and holly
Heating	diesel ducted hot air Webasto Airtop 5500 Evo (2009)
Chart table	yes
Galley	yes
Countertop	plastic
Sink	stainless steel 2x
Cooker	calor gas
Oven	yes
Fridge	12V
Hot water system	220V + engine Boiler (2012)
Water pressure system	electrical
Owners cabin	French bed
Bed length (m)	2,00
Wardrobe	shelves and hanging
Bathroom	en suite
Toilet	yes



Toilet system	manual
Wash basin	yes
Shower	yes
Guest cabin 1	v-bed
Wardrobe	shelves and hanging

MACHINERY

No of engines	1
Make	Volvo Penta
Type	MD22L
HP	50,00
kW	36,75
Fuel	diesel
Year installed	1999
Maximum speed (kn)	7,5
Cruising speed (kn)	6,8
Consumption (l/hr)	2/3
Engine cooling system	freshwater heat exchanger
Drive	sail-drive
Engine controls	mechanical
Gearbox	mechanical
Bowthruster	electric
Gearbox	mechanical
Exhaust	watercooled
Propeller type	fixed
Propeller blades	3
Manual bilge pump	yes
Electric bilge pump	yes
Electrical installation	12V/220V
Start battery	1x
Service battery	2x (2015)



Bowthruster battery	2x semi track (2013)
Windlass battery	+ charger (2009)
Battery monitor	yes
Battery charger	40A
Inverter	300W
Diode battery combiners	yes
Shorepower	with cable
Extra info	Saildrive seal of 2011. Voltmeter, ammeter. Rev counter.

NAVIGATION

Compass	Needs maintenance.
Electric compass	(autopilot)
Depth sounder	ST60 (spare transducer available)
Log	yes
Windset	Autohelm ST60, masttop unit of 2011
VHF	Shipmate RS8300 (Atis) VHF electronic unit 2015 (second hand)
Autopilot	Autohelm ST6000+ (computer/display 2009)
Radar	(2001)
GPS	yes

EQUIPMENT

Fixed windscreen	yes
Sprayhood	(2013)
Cockpit cover	yes
Winter cover	yes
Cockpit cushions	yes
Cockpit table	Teak
Boarding ladder	stainless steel
Deck shower	hot + cold water
Anchor	Danforth



Anchor chain	50 m
Windlass	electrical
Deck wash	(2001)
Sea railing	stainless steel
Grab rail (superstructure)	stainless steel
Railing side opening gates	yes
Pushpit	S/S
Pulpit	S/S
Radar reflector	yes
Fenders	yes
Mooring lines	yes
TV	yes
Radio-cd player	yes
Speakers in salon	yes
Fire extinguisher	3x - need to be replaced.

RIGGING

Rigging	sloop
Standing rigging	wire
Brand mast	Seldén
Material mast	aluminium
Spreaders	2x 2
Mainsail	yes
Stoway mast	yes
Genoa II	(2013)
Genoa furler	yes
Genoa cover	yes
A-symetric spi	yes
Backstay adjuster	mechanical
Boomvang	gasspring
Genoa sheetwinches	2x Lewmar 44ST two speed electric. (2001)



Halyard winches

2x ST two speed

Extra info

Extra spinnaker halyard. Tensioners and lines led to the cockpit.



BAVARIA 38 OCEAN



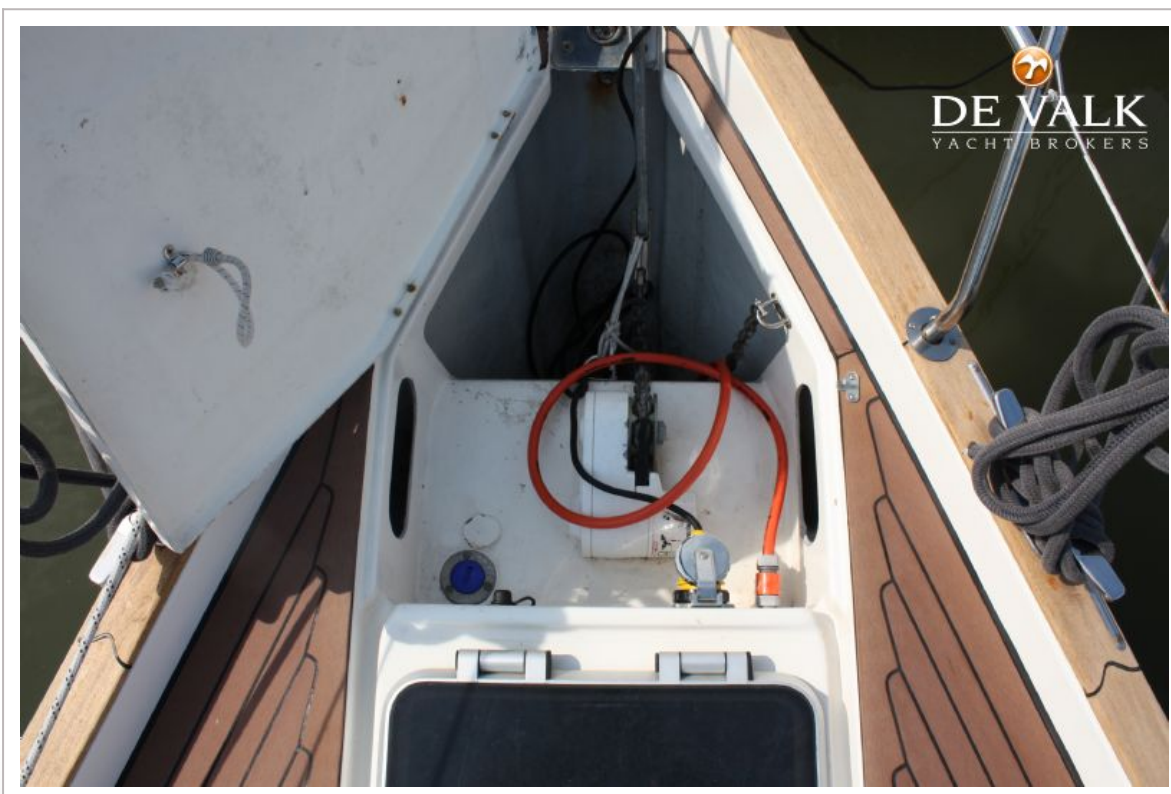
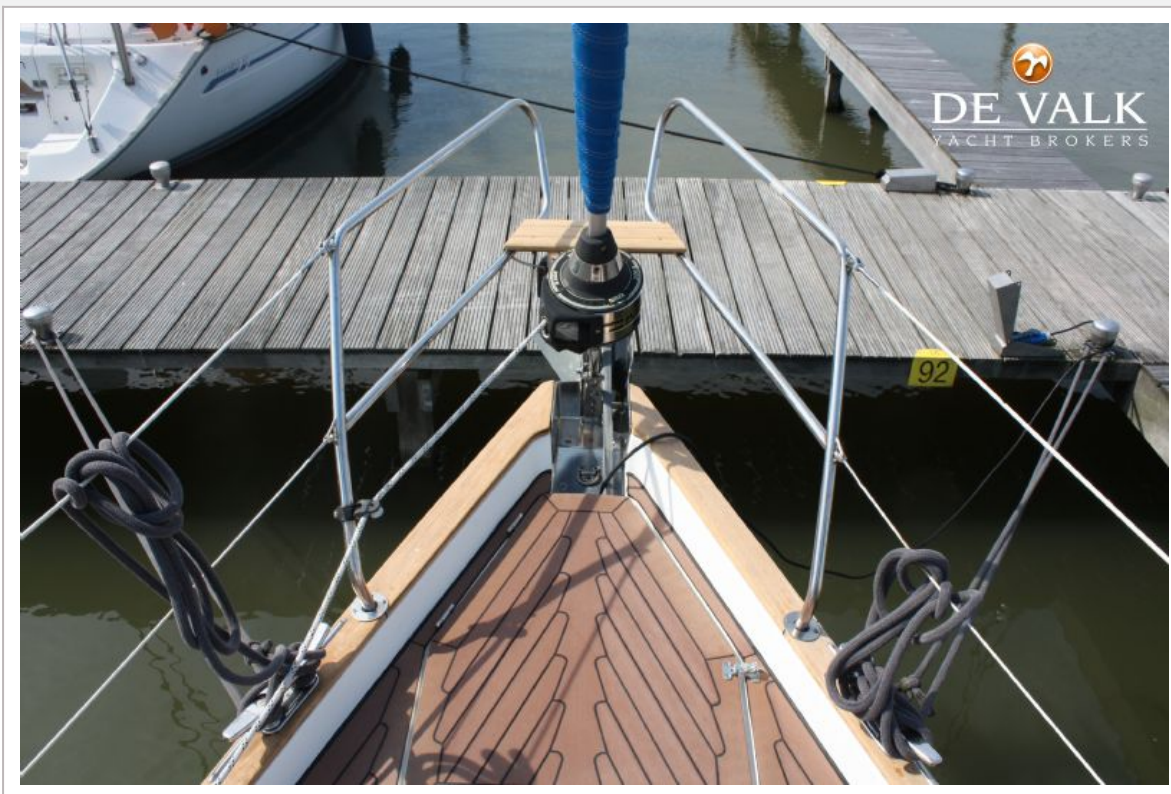
BAVARIA 38 OCEAN



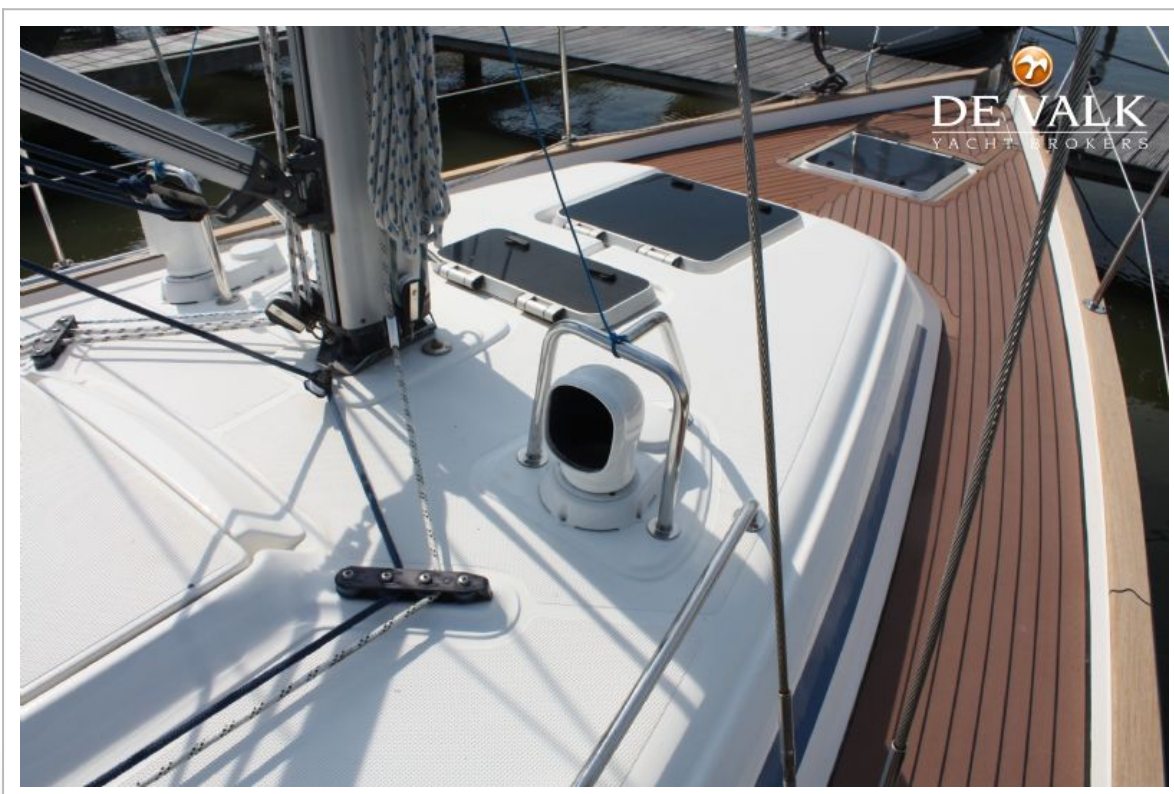
BAVARIA 38 OCEAN



BAVARIA 38 OCEAN



BAVARIA 38 OCEAN



BAVARIA 38 OCEAN



BAVARIA 38 OCEAN



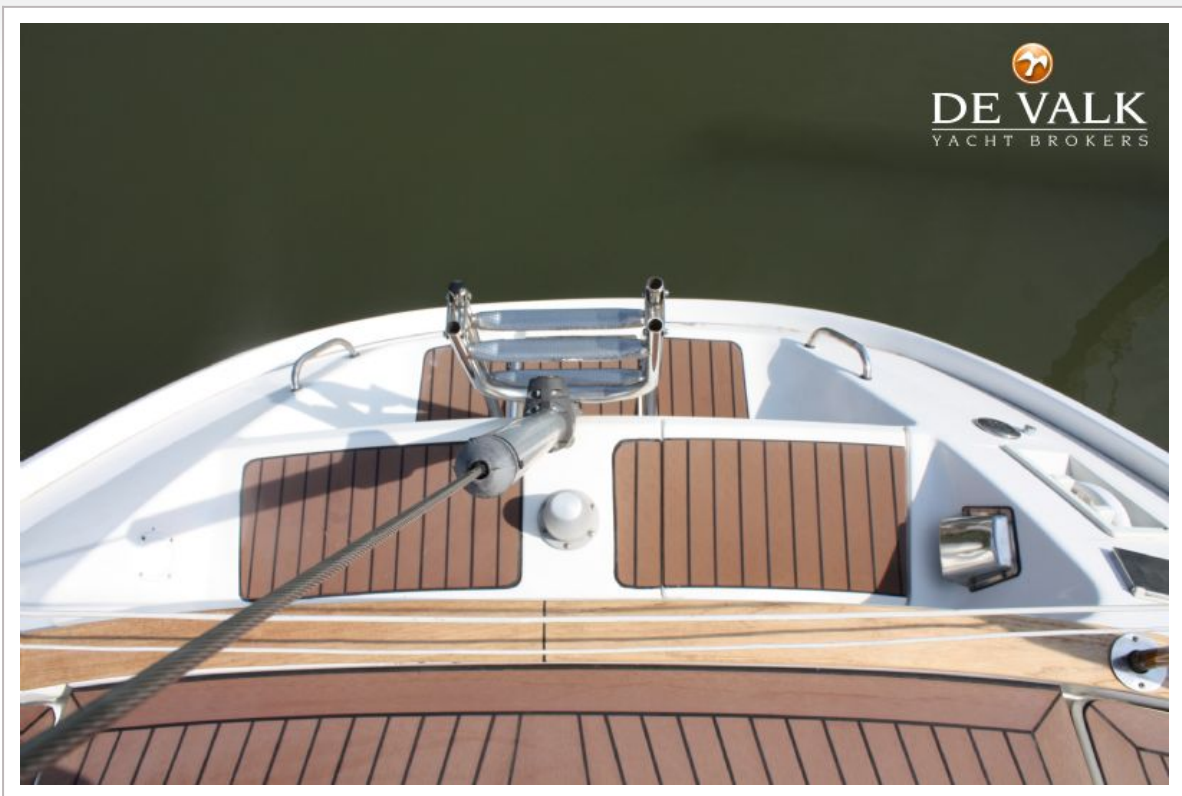
BAVARIA 38 OCEAN



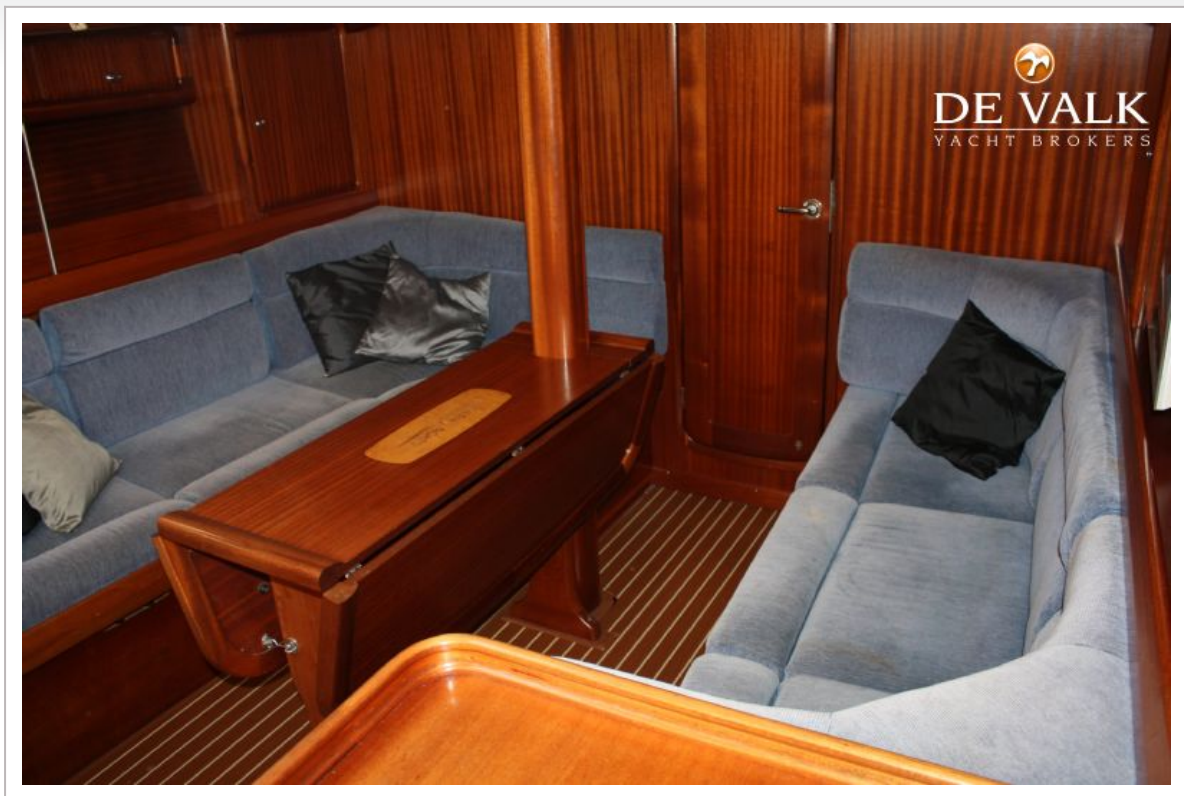
BAVARIA 38 OCEAN



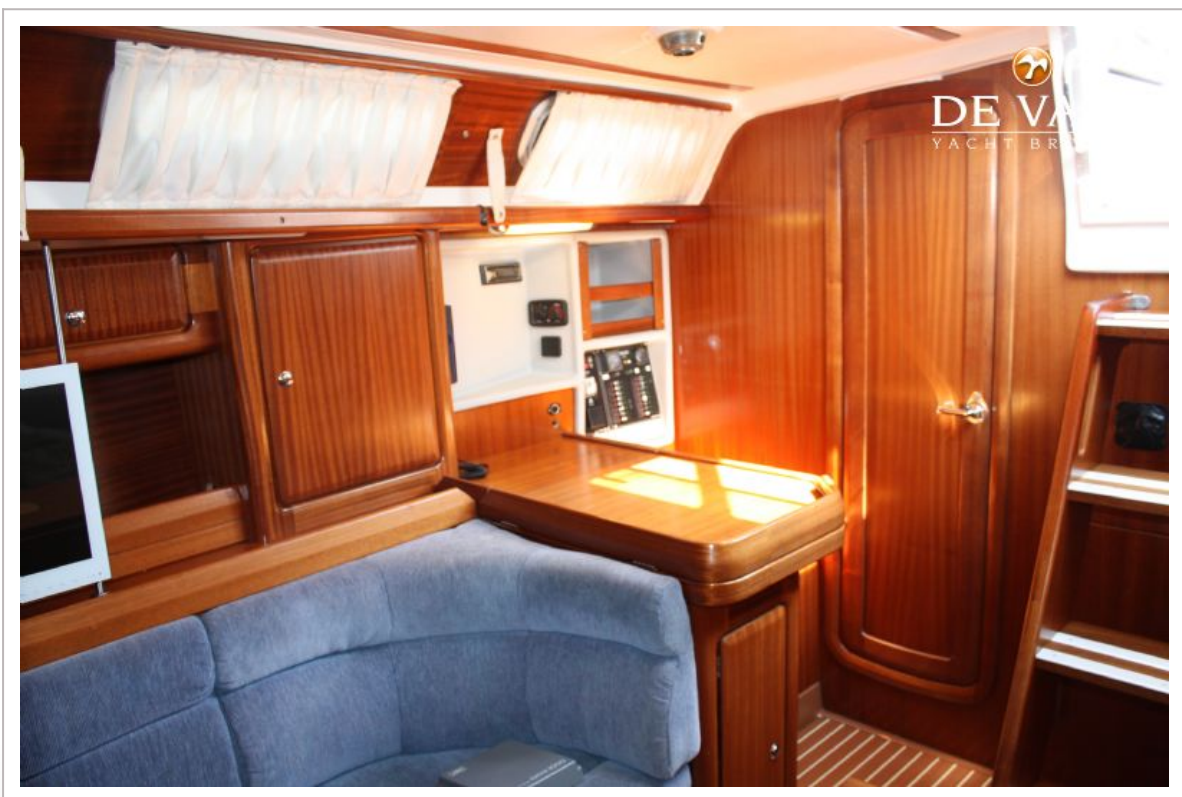
BAVARIA 38 OCEAN



BAVARIA 38 OCEAN



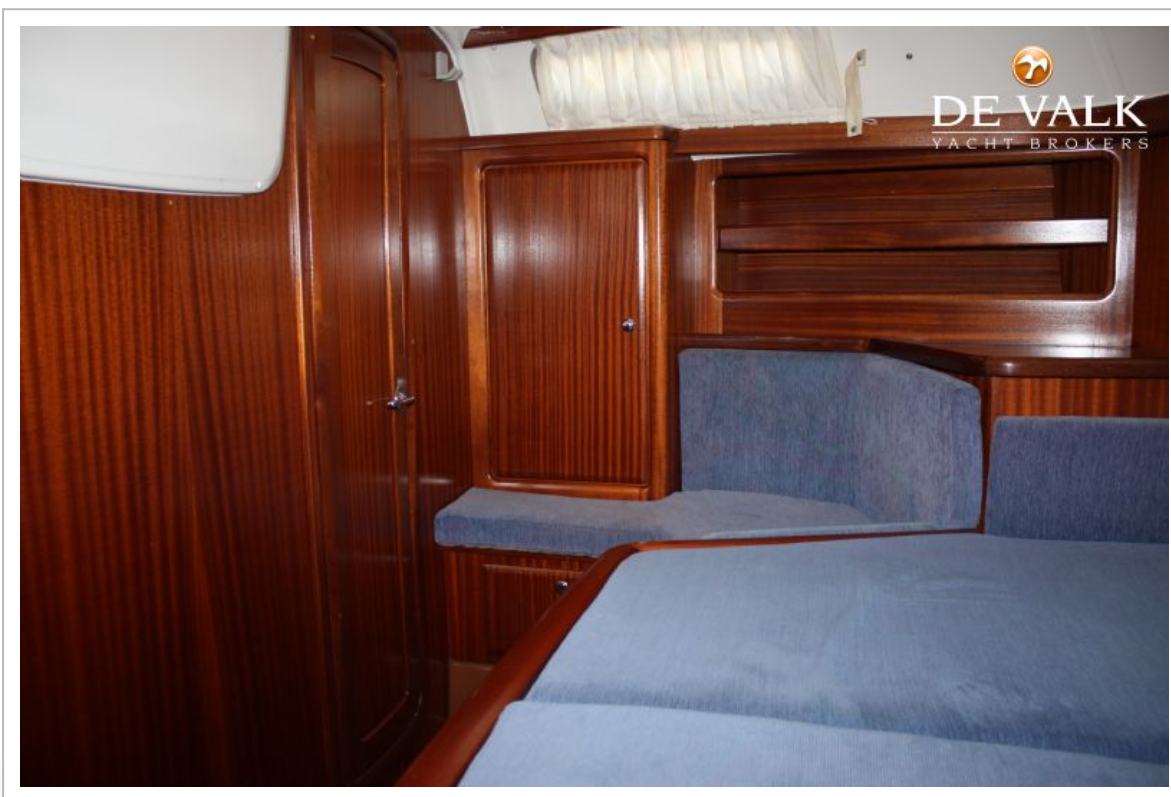
BAVARIA 38 OCEAN



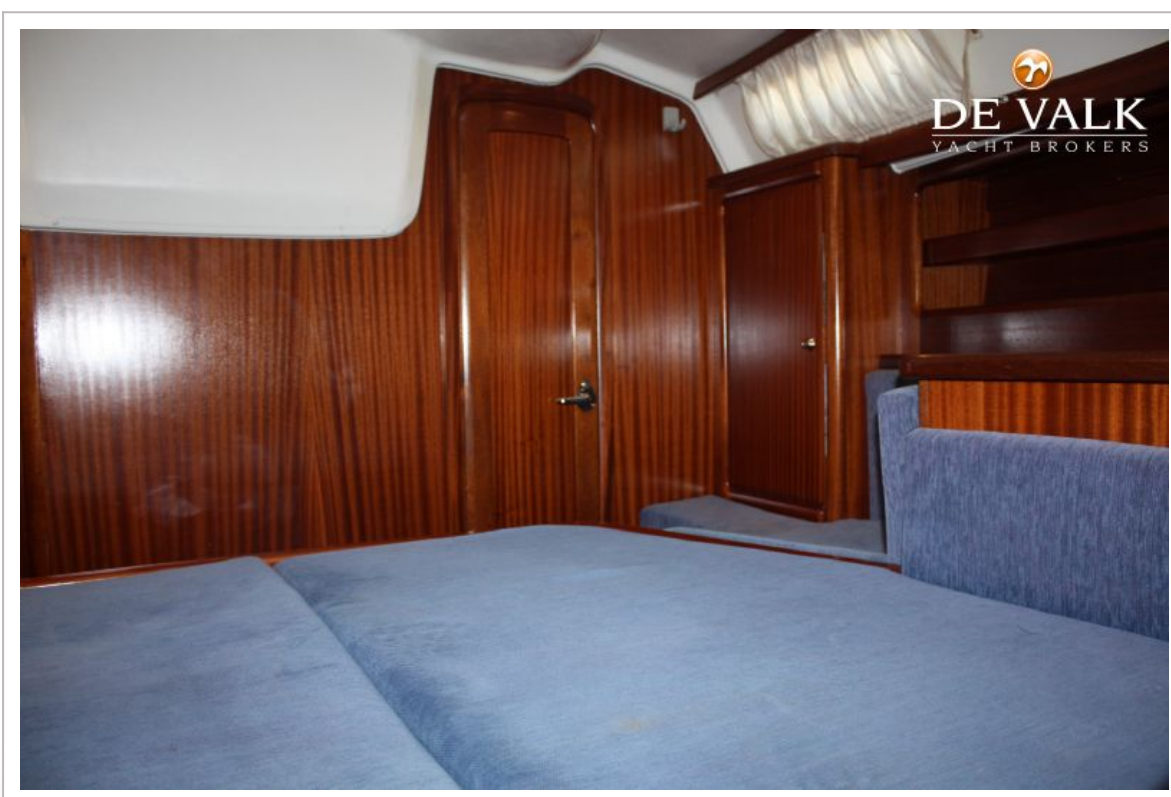
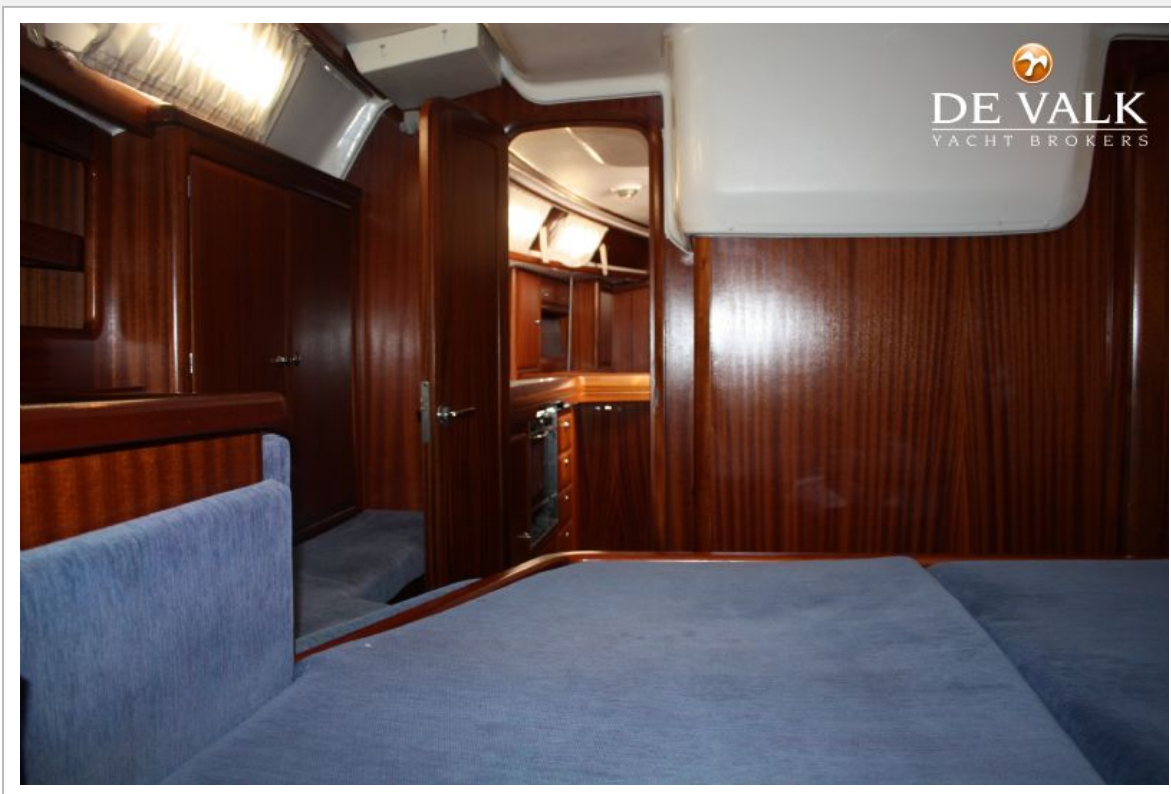
BAVARIA 38 OCEAN



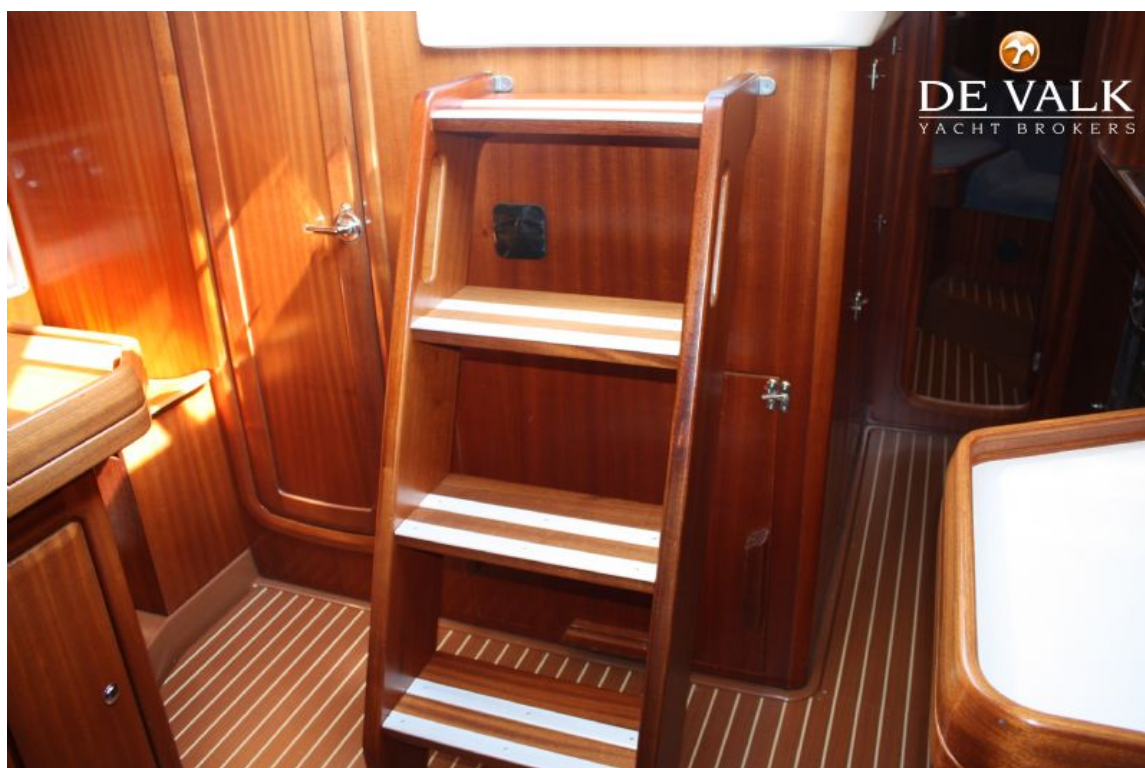
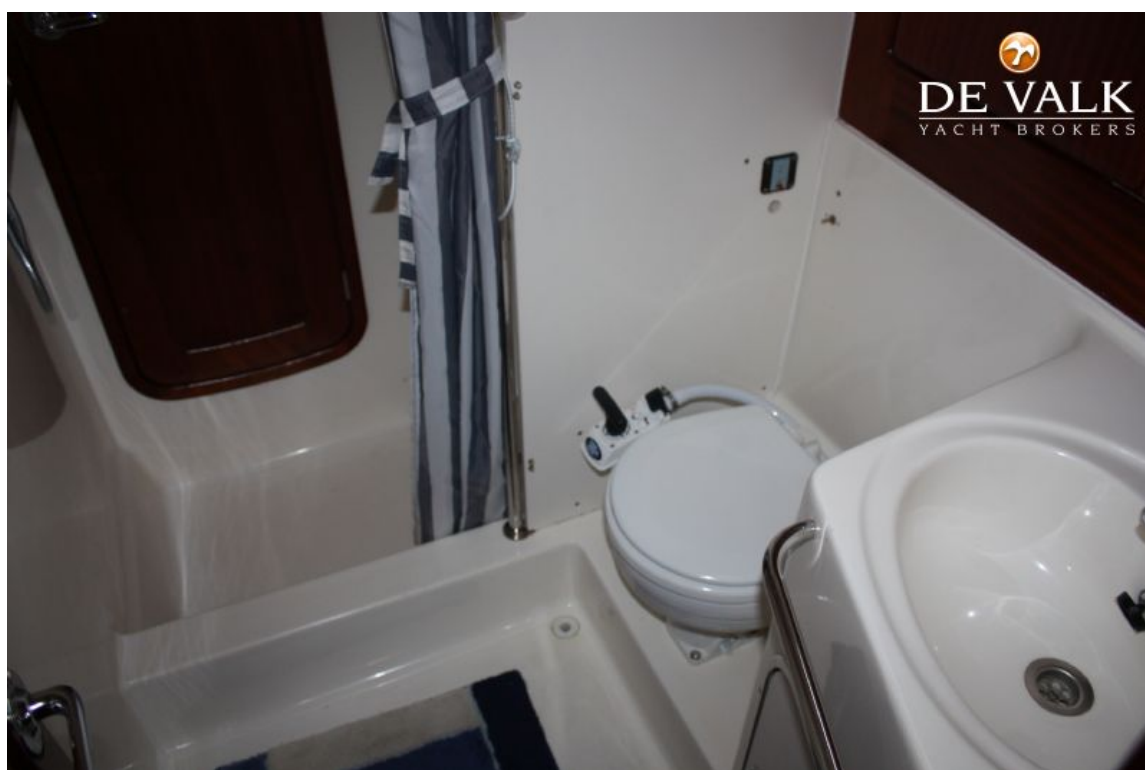
BAVARIA 38 OCEAN



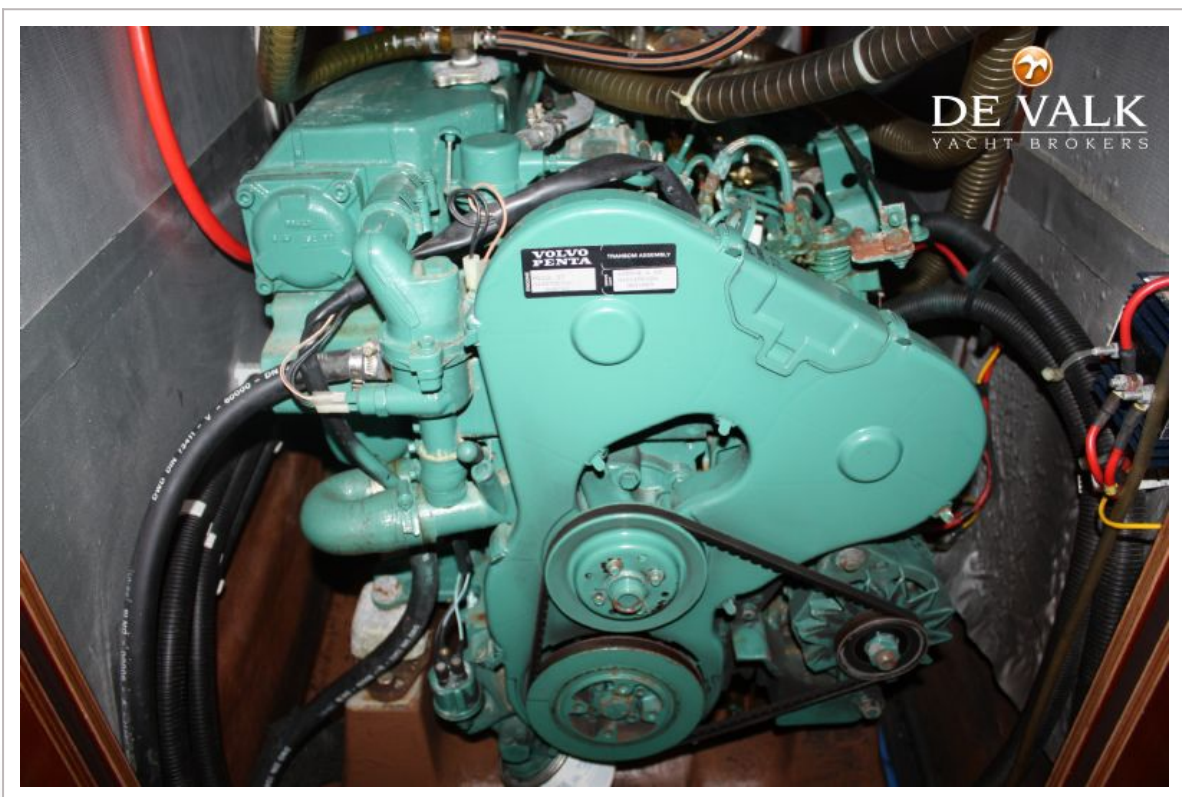
BAVARIA 38 OCEAN



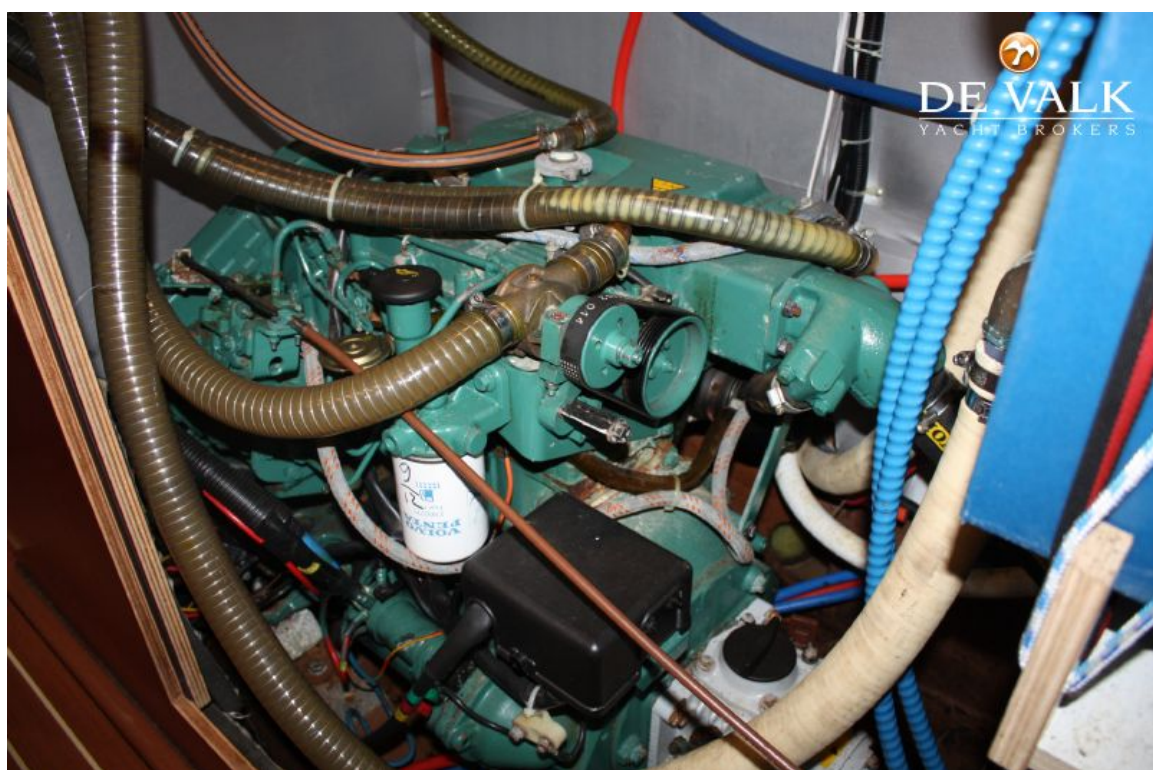
BAVARIA 38 OCEAN



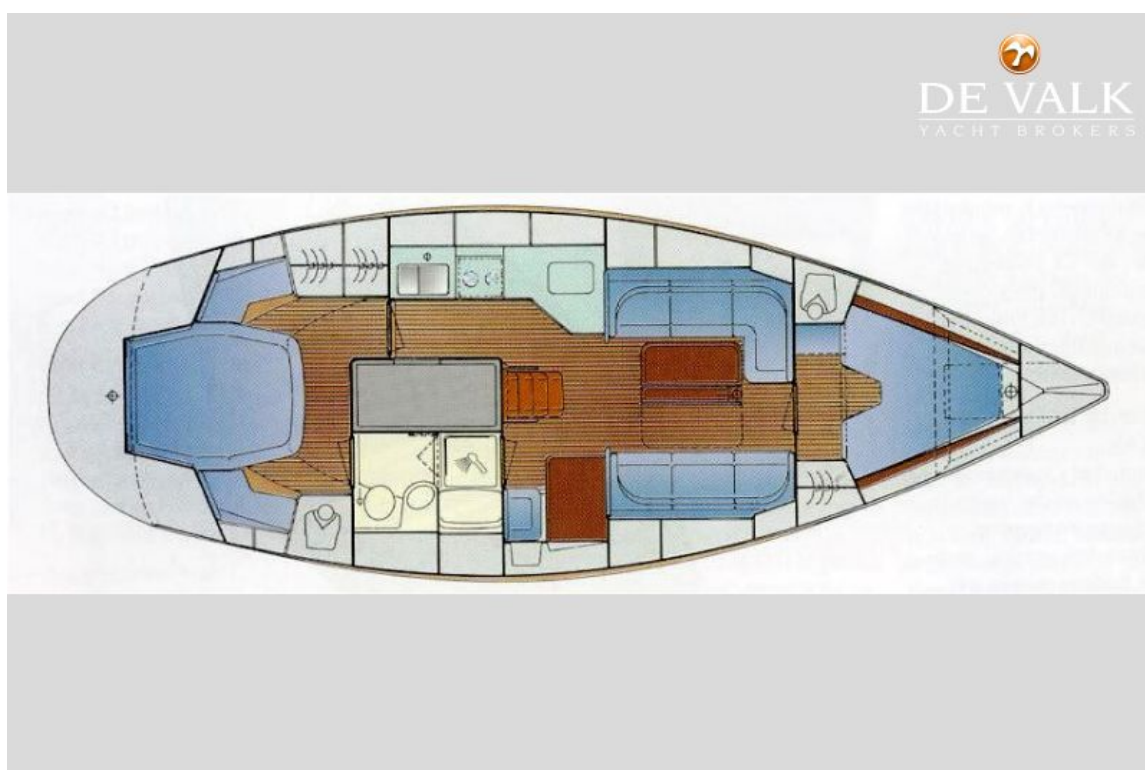
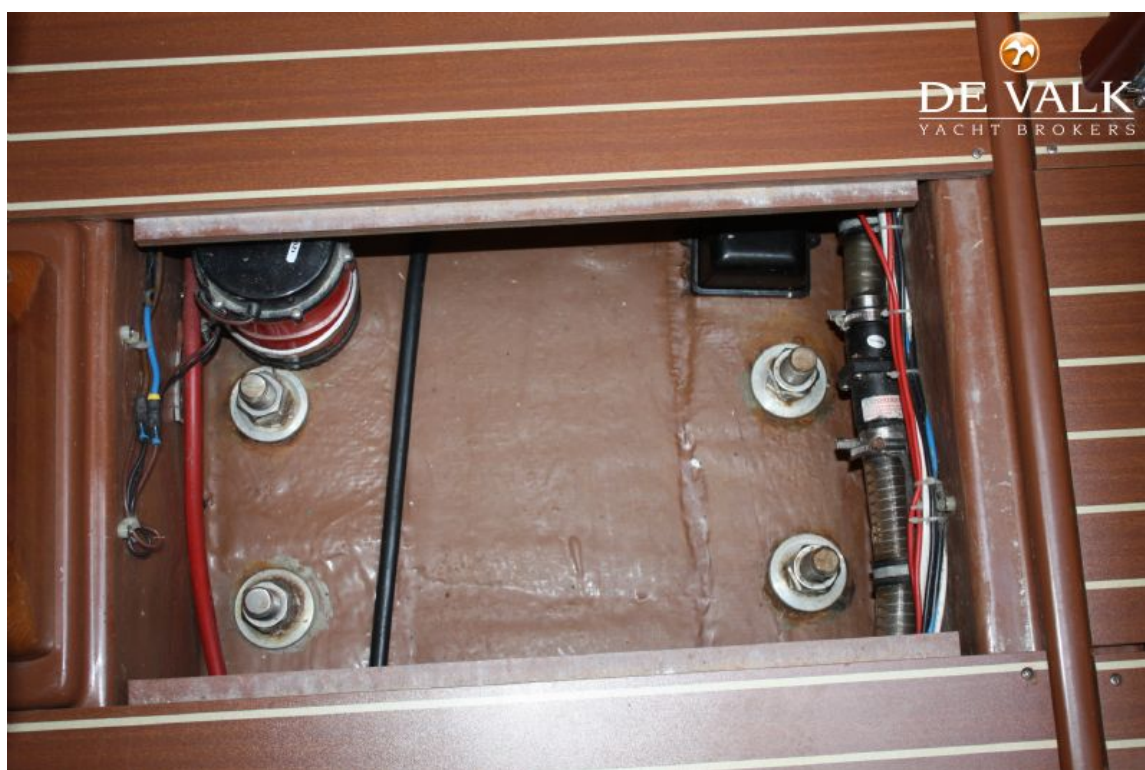
BAVARIA 38 OCEAN



BAVARIA 38 OCEAN



BAVARIA 38 OCEAN



BAVARIA 38 OCEAN

