



DE VALK  
YACHT BROKERS



## BAVARIA 42 LAGOON



DE VALK  
YACHT BROKERS

# BAVARIA 42 LAGOON

## BROKER'S COMMENTS

Excellent design in the famous Bavaria range. Comfort, style, ease of handling and craftsmanship throughout. All and all a yacht for the family with two separate cabins and huge owners cabin forward. Needless to say she is in good condition and ready to go! "Alkyone" has been sailed only privately.

*Sander van der Voorn*

## SPECIFICATIONS

<b>Dimensions</b>	13.20 x 3.98 x 1.95 (m)	<b>Builder</b>	Bavaria GmbH
<b>Built</b>	1991	<b>Cabins</b>	3
<b>Material</b>	GRP	<b>Berths</b>	8
<b>Engine(s)</b>	1 x Volvo Penta 2003 T 86809- 1 diesel	<b>Hp/Kw</b>	43.00 (hp), 31.61 (kw)
<b>Asking price</b>	sold (VAT )	<b>Lying</b>	at sales office

## CONTACT

<b>Sales office</b>	De Valk Monnickendam B.V.	<b>Telephone</b>	+31 (0)299 65 63 50
<b>Address</b>	Hoogedijk 6 1145 PM Katwoude NL	<b>E-mail</b>	monnickendam@devalk.nl

## DISCLAIMER

These particulars are given in good faith as supplied but cannot be guaranteed.



# BAVARIA 42 LAGOON

## GENERAL

<b>Model</b>	BAVARIA 42 LAGOON
<b>Type</b>	sailing yacht
<b>LOA (m)</b>	13,20
<b>LWL (m)</b>	11,00
<b>Beam (m)</b>	3,98
<b>Draft (m)</b>	1,95
<b>Headroom (m)</b>	1,90
<b>Year built</b>	1991
<b>Builder</b>	Bavaria GmbH
<b>Country</b>	Germany
<b>Designer</b>	Axel Mohnhaupt
<b>Displacement (t)</b>	9
<b>Ballast (tonnes)</b>	cast iron 3,35
<b>Hull material</b>	GRP
<b>Hull colour</b>	white
<b>Hull shape</b>	yes
<b>Keel type</b>	wing keel
<b>Superstructure material</b>	GRP
<b>Rubbing strake</b>	aluminum
<b>Deck material</b>	GRP
<b>Deck finish</b>	teak
<b>Superstructure deck finish</b>	teak
<b>Cockpit deck finish</b>	teak
<b>Antifouling (year)</b>	2014
<b>Window frame</b>	aluminium
<b>Window material</b>	polycarbonate
<b>Deckhatch</b>	8x
<b>Portholes</b>	aluminium
<b>Fuel tank (litre)</b>	GRP
<b>Level indicator (fuel tank)</b>	VDO



# BAVARIA 42 LAGOON

Freshwater tank (litre)	2x
Level indicator (freshwater)	yes
Wheel steering	mechanical
Emergency tiller	yes

## ACCOMMODATION

Cabins	3
Berths	8
Interior	mahogany
Floor	teak and holly
Saloon	yes
Headroom saloon (m)	1,90
Heating	diesel ducted hot air Webasto Air Top (11-2012)
Chart table	yes
Dinette	yes
Dinette to convert into berth	yes
Galley	yes
Countertop	corian
Sink	stainless steel 2x
Cooker	calor gas Spitzer
Oven	Spitzer
Fridge	yes
Hot water system	220V Duko
Water pressure system	electrical
Owners cabin	double bed
Bed length (m)	2,00
Wardrobe	shelves and hanging
Bathroom	en suite
Toilet	yes
Toilet system	manual
Wash basin	yes



# BAVARIA 42 LAGOON

<b>Guest cabin 1</b>	double bed
<b>Bed length (m)</b>	2,00
<b>Wardrobe</b>	shelves
<b>Bathroom</b>	yes
<b>Toilet</b>	yes
<b>Toilet system</b>	manual
<b>Wash basin</b>	yes
<b>Shower</b>	yes
<b>Guest cabin 2</b>	double bed
<b>Bed length (m)</b>	2,00
<b>Wardrobe</b>	shelves
<b>Wash basin</b>	in the cabin

## MACHINERY

<b>No of engines</b>	1
<b>Make</b>	Volvo Penta
<b>Type</b>	2003 T 86809- 1
<b>HP</b>	43,00
<b>kW</b>	31,61
<b>Fuel</b>	diesel
<b>Year installed</b>	1991
<b>Maximum speed (kn)</b>	8
<b>Cruising speed (kn)</b>	6
<b>Engine cooling system</b>	freshwater heat exchanger
<b>Drive</b>	sail-drive
<b>Engine controls</b>	bowden cable Volvo Penta
<b>Gearbox</b>	hydraulic
<b>Exhaust</b>	watercooled
<b>Propeller type</b>	fixed
<b>Manual bilge pump</b>	Whale
<b>Electric bilge pump</b>	yes



# BAVARIA 42 LAGOON

<b>Start battery</b>	1x Optima 50 Ah (2-2013)
<b>Service battery</b>	3x AMG 140 Ah
<b>Battery charger/inverter</b>	Victron Multi+ compact 12/1200 VA 50 Ah (2-2013)
<b>Shorepower</b>	with cable
<b>Extra info</b>	Saildrive overhauled (May 2014). Waterpump engine (May 2014).

## NAVIGATION

<b>Compass</b>	Plath
<b>Depth sounder</b>	Raymarine Tridata I50/I60 (14-5-2014)
<b>Windset</b>	Raymarine Tridata I50/I60 (14-5-2014)
<b>VHF</b>	Sailor KSR608900 (Atis?)
<b>Autopilot</b>	Raymarine ACQ 2000 + RM
<b>Radar</b>	?
<b>GPS</b>	C80
<b>Plotter</b>	yes

## EQUIPMENT

<b>Sprayhood with grab rail</b>	(29-10-2014)
<b>Cockpit cover</b>	(29-10-2014)
<b>Cockpit table</b>	yes
<b>Bathing platform</b>	yes
<b>Boarding ladder</b>	stainless steel
<b>Anchor</b>	yes
<b>Windlass</b>	electrical Lofrans
<b>Sea railing</b>	stainless steel
<b>Grab rail (superstructure)</b>	stainless steel
<b>Pushpit</b>	S/S
<b>Pulpit</b>	S/S
<b>Fenders</b>	yes
<b>Mooring lines</b>	yes



Radio-cd player	JVC KD S711R
Speakers in salon	yes
Clock - barometer	+ hygro (Wempe)
Fire extinguisher	yes
Latest extinguisher survey	must be checked

## RIGGING

Rigging	sloop
Standing rigging	wire
Material mast	aluminium
Spreaders	2x 2
Mainsail	yes
Mainsail cover	(29-10-2014)
High aspect	(5-2013)
Genoa furler	Harken
Gennaker	ATS
Reefing System	quick-one-line-reefing
Boomvang	gasspring
Primary sheet winch	2x Barient 24
Genoa sheetwinches	2x Barient 28+ ST
Spinnaker winch	2x Barient 22
Spi-pole	aluminium



# BAVARIA 42 LAGOON





# BAVARIA 42 LAGOON



# BAVARIA 42 LAGOON



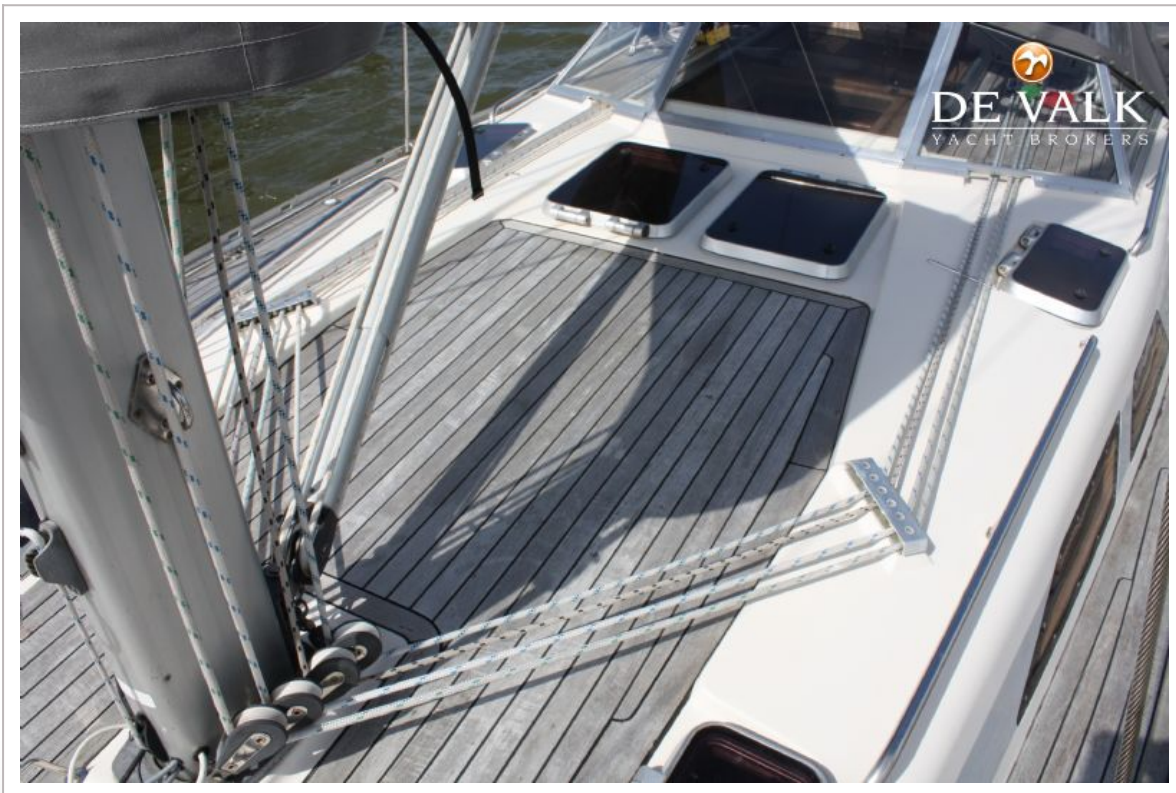


# BAVARIA 42 LAGOON

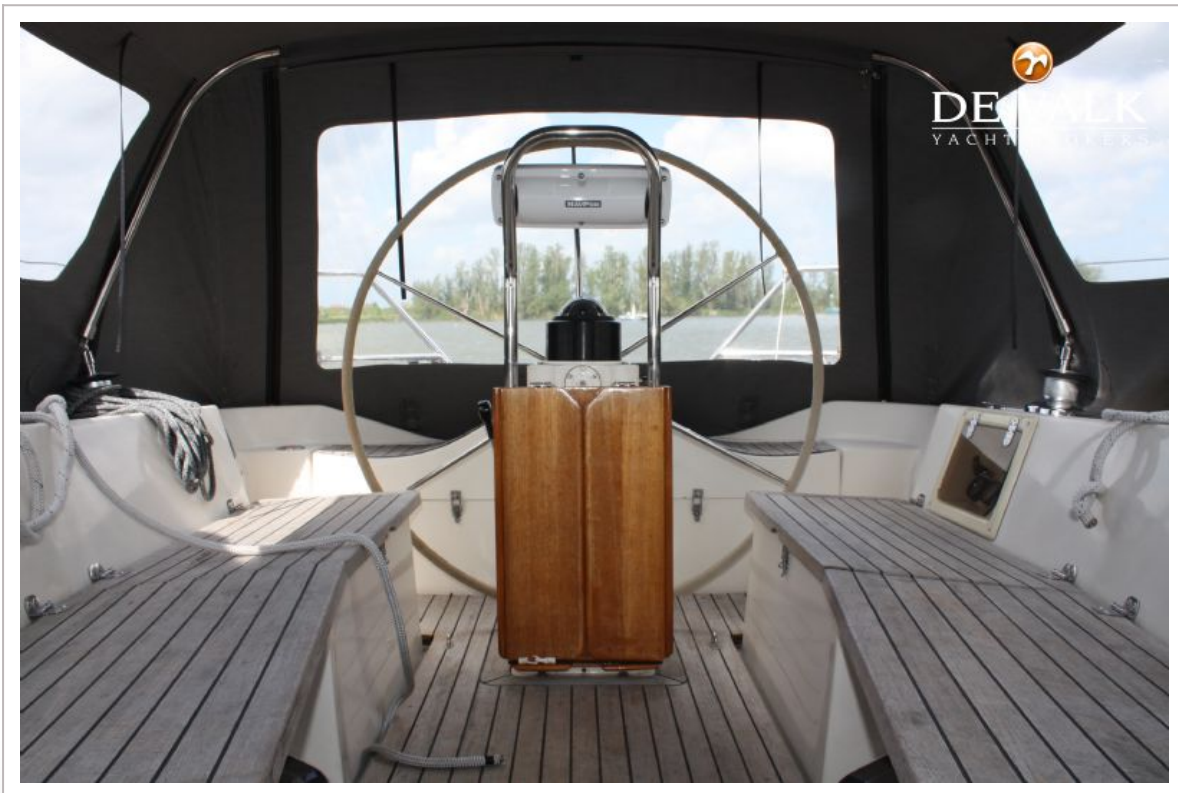




# BAVARIA 42 LAGOON



# BAVARIA 42 LAGOON





# BAVARIA 42 LAGOON



# BAVARIA 42 LAGOON





# BAVARIA 42 LAGOON





# BAVARIA 42 LAGOON



# BAVARIA 42 LAGOON

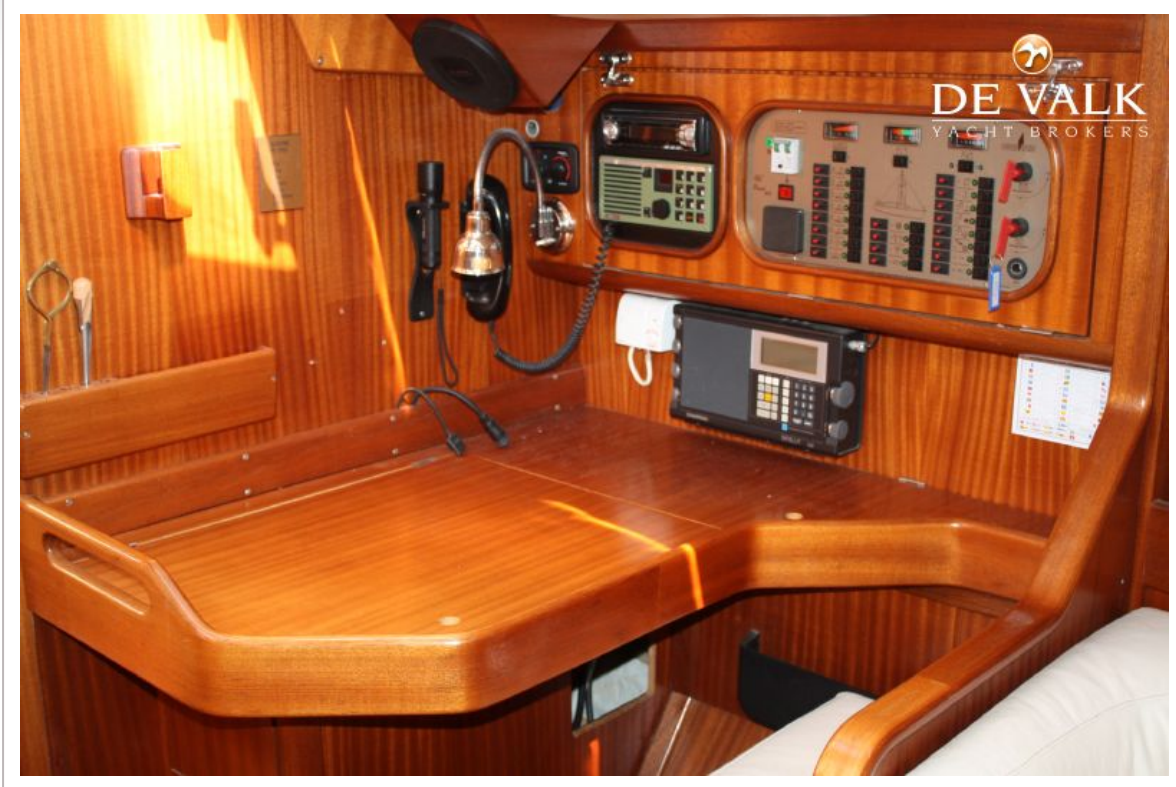




# BAVARIA 42 LAGOON

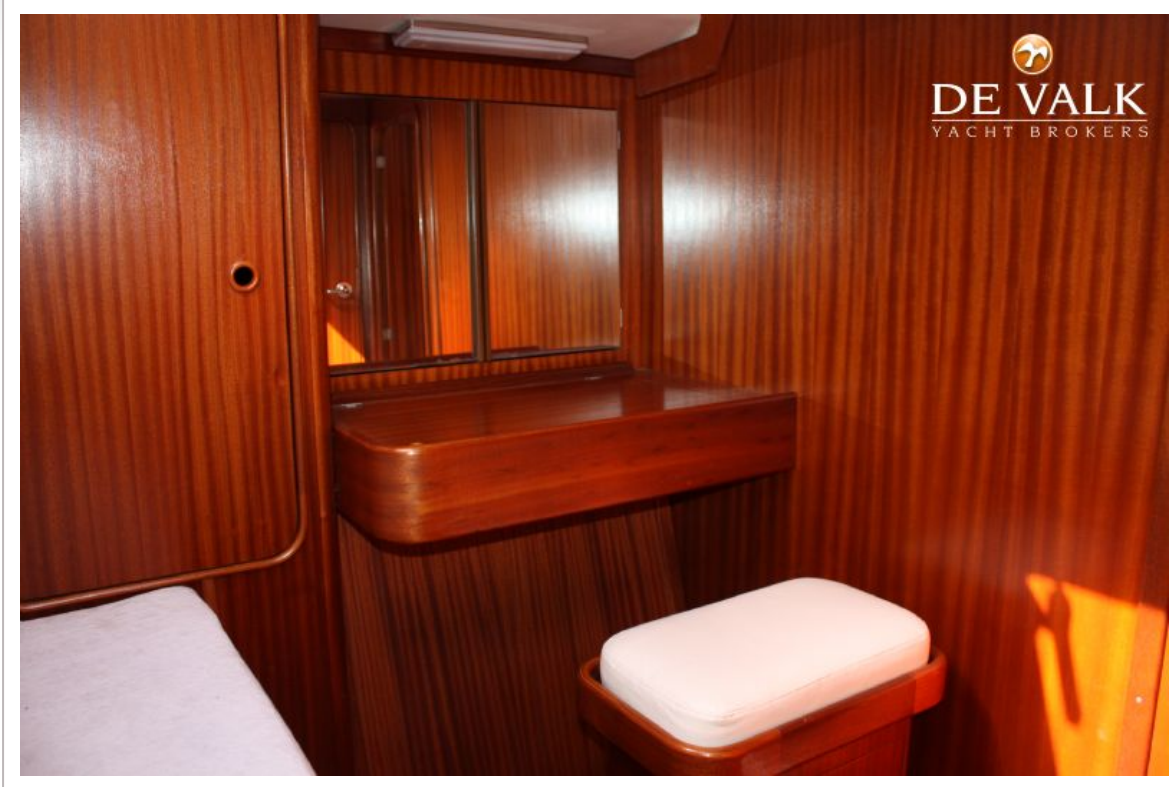


# BAVARIA 42 LAGOON





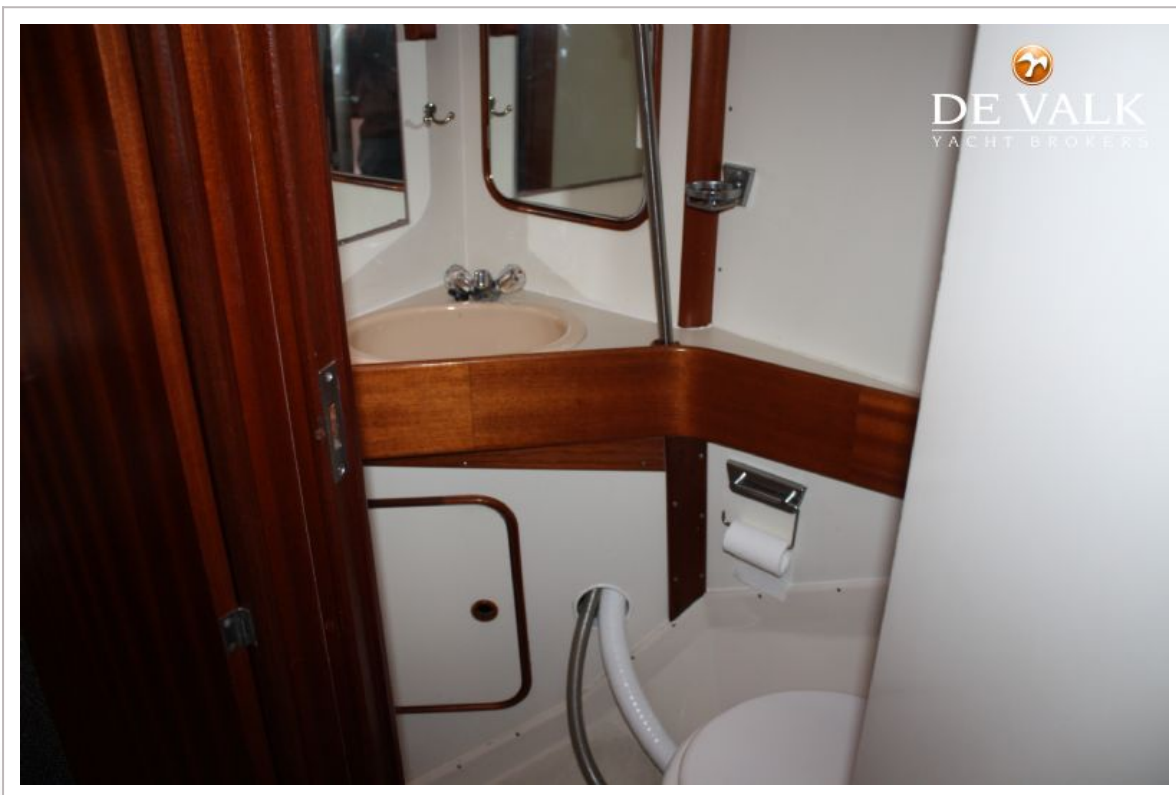
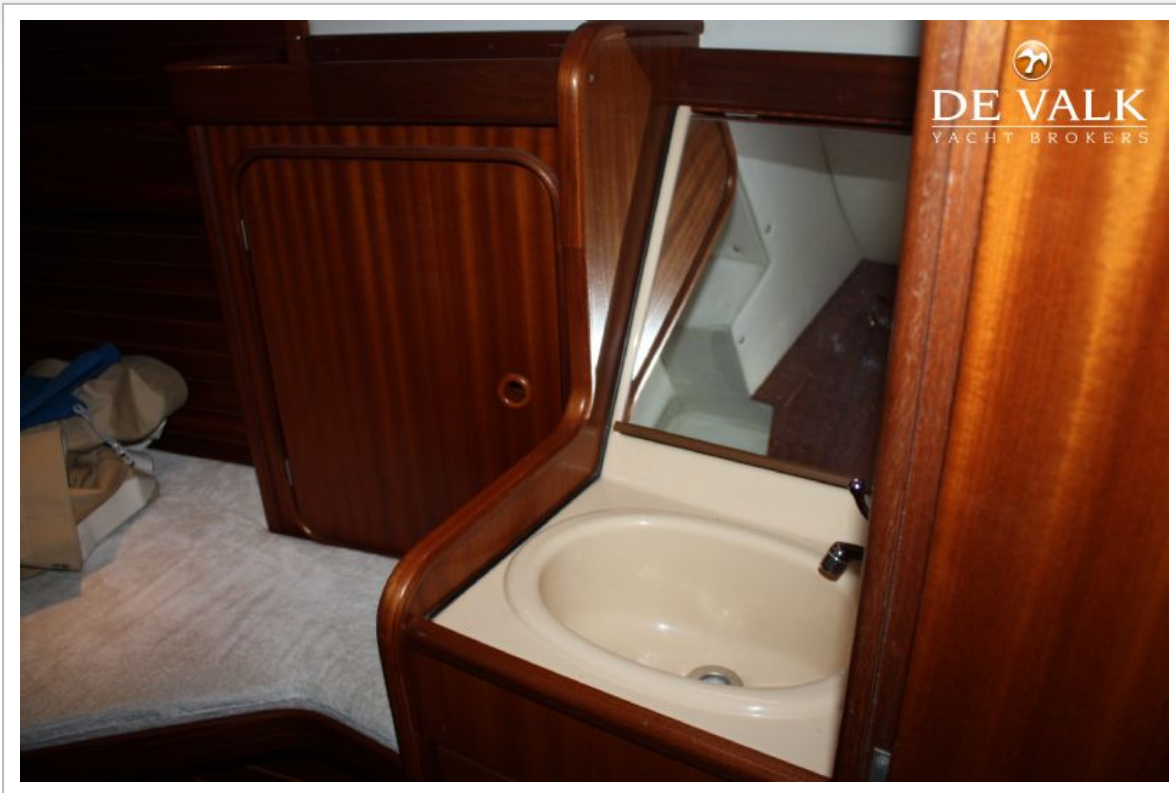
# BAVARIA 42 LAGOON



# BAVARIA 42 LAGOON



# BAVARIA 42 LAGOON





# BAVARIA 42 LAGOON

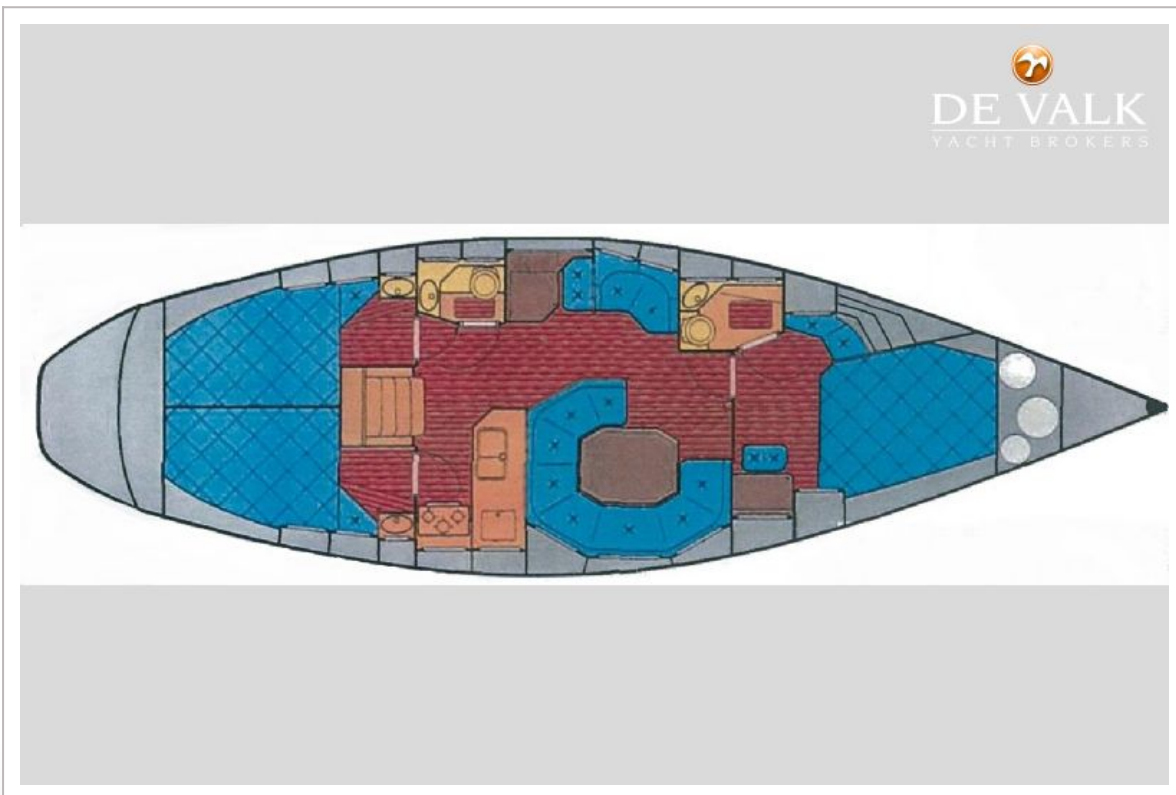
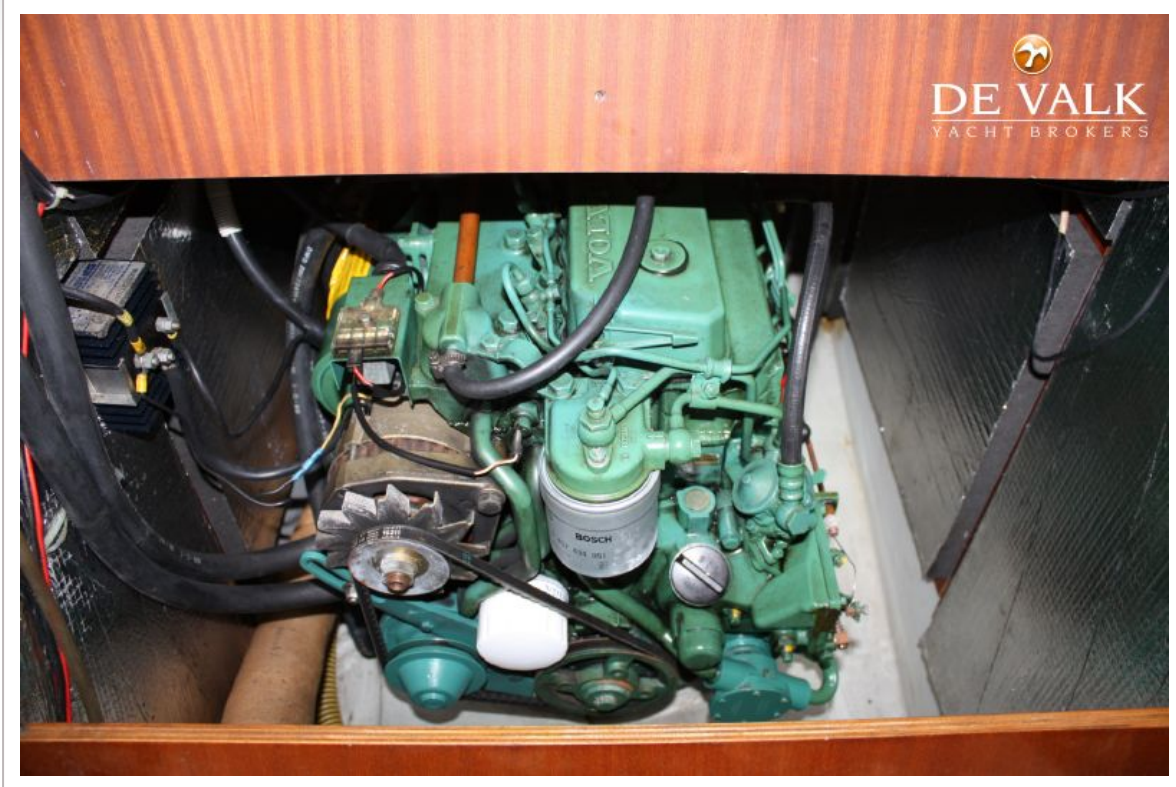




# BAVARIA 42 LAGOON



# BAVARIA 42 LAGOON



# BAVARIA 42 LAGOON

