



BAVARIA 36-2



BROKER'S COMMENTS

'Silver star' is the name of this Bavaria 36-2 she is in an good condition and ready for some comfortable family cruising, day sailing or stay on board. Great value for money, well equip young family boat No Charter boat

Sander van der Voorn

SPECIFICATIONS

Dimensions	11.40 x 3.60 x 1.65 (m)	Builder	Bavaria Yachtbau GmmbH
Built	2004	Cabins	2
Material	GRP	Berths	6
Engine(s)	1 x Volvo Penta MD2030-D BT diesel	Hp/Kw	29.00 (hp), 21.32 (kw)
Asking price	sold (VAT)	Lying	at sales office

CONTACT

Sales office	De Valk Monnickendam B.V.	Telephone	+31 (0)299 65 63 50
Address	Hoogedijk 6 1145 PM Katwoude NL	E-mail	monnickendam@devalk.nl

DISCLAIMER

These particulars are given in good faith as supplied but cannot be guaranteed.



GENERAL

Model	BAVARIA 36-2
Type	sailing yacht
LOA (m)	11,40
Beam (m)	3,60
Draft (m)	1,65
Air draft (m)	15,16
Year built	2004
Builder	Bavaria Yachtbau GmmbH
Country	Germany
Designer	J&J Design
Displacement (t)	5,5
Ballast (tonnes)	cast iron 1,5
CE norm	A
Hull material	GRP
Hull colour	white
Hull shape	round-bilged
Keel type	fin keel
Superstructure material	GRP
Rubbing strake	stainless steel Wood / stainless steel
Deck material	GRP
Deck finish	anti-slip moulded in
Superstructure deck finish	anti-slip moulded in
Cockpit deck finish	teak
Antifouling (year)	04-2015
Window frame	aluminium
Window material	polycarbonate
Deckhatch	4
Fuel tank (litre)	polyethylene 150
Level indicator (fuel tank)	yes
Freshwater tank (litre)	polyethylene 2 x 150 litre



Level indicator (freshwater)	yes
Blackwater tank (litre)	polyethylene 80 litre
Blackwater tank extraction	deck extraction + pump
Wheel steering	cable steering
Emergency tiller	yes
Extra info	Rubbing strake wood / stainless steel

ACCOMMODATION

Cabins	2
Berths	6
Interior	mahogany
Floor	teak and holly
Headroom saloon (m)	Approx. 1,90
Heating	diesel ducted hot air
Chart table	yes
Aft Cabin	yes
Dinette to convert into berth	yes
Opening door to cockpit	yes
Galley	yes
Countertop	corian
Sink	stainless steel
Cooker	calor gas 2 burner
Oven	yes
Fridge	yes
Hot water system	220V/engine/heating
Water pressure system	electrical
Owners cabin	double bed
Bed length (m)	2, slatted frame
Wardrobe	hanging and shelves
Bathroom	shared
Toilet	shared



Toilet system	manual Jabsco 2014
Wash basin	in the bathroom
Shower	shared
Guest cabin 1	double bed
Bed length (m)	2, slatted fram
Wardrobe	hanging and shelves

MACHINERY

No of engines	1
Make	Volvo Penta
Type	MD2030-D BT
HP	29,00
kW	21,32
Fuel	diesel
Year installed	2004
Maximum speed (kn)	7
Engine hours	500
Engine cooling system	freshwater heat exchanger
Drive	sail-drive
Engine controls	bowden cable
Gearbox	hydraulic
Bowthruster	electric Maxpower 60
Exhaust	watercooled
Propeller type	folding
Propeller blades	3
Manual bilge pump	Pump 1038
Electric bilge pump	yes
Bilge alarm	yes
Start battery	77 Ah 2015
Service battery	2 x 165 Ah 2011
Battery monitor	Victron energie



Battery charger	Mobitronic 925 - 012TD 25A
Solar panel	yes
Diode battery combiners	yes
Shorepower	with cable
Extra info	Engine hour counter out of order

NAVIGATION

Compass	Olimpique 135
Depth sounder	Raymarine ST60 tridata
Log	Raymarine ST60 tridata
Windset	Raymarine ST60
VHF	Standard Horizon GX2100 AIS
Autopilot	Raymarine ST 4000+
Plotter	Raymarine RC 435

EQUIPMENT

Sprayhood	2015
Cockpit cushions	yes
Boarding ladder	stainless steel
Deck shower	yes
Anchor	Spade
Anchor chain	yes
Windlass	electrical Lewman pro serie with remote controle
Sea railing	wire
Grab rail (superstructure)	stainless steel
Pushpit	yes
TV	Reflexion
TV receiver	yes
Radio-cd player	Blaupunkt San Remo CD32



RIGGING

Rigging	sloop 7/8
Standing rigging	wire
Brand mast	Seldén
Material mast	aluminium
Spreaders	2
Fully battened mainsail	yes
Genoa	yes
Genoa furler	Seldén Furlex 200S
Reefing System	main in-mast furling
Backstay adjuster	tackle
Boomvang	gasspring Seldén Rodkicker
Primary sheet winch	2 Harken two speed 40
Secondary sheet winch	2 Harken 16



BAVARIA 36-2



BAVARIA 36-2



BAVARIA 36-2



BAVARIA 36-2

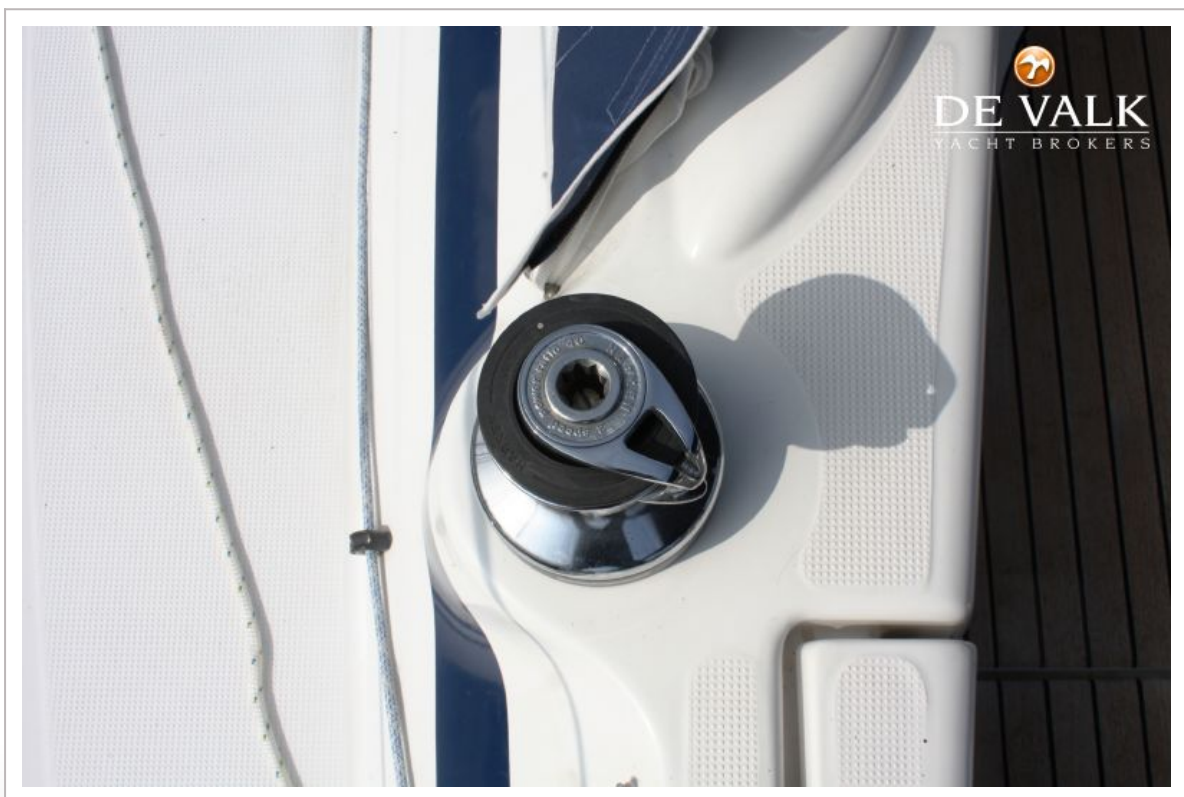




BAVARIA 36-2









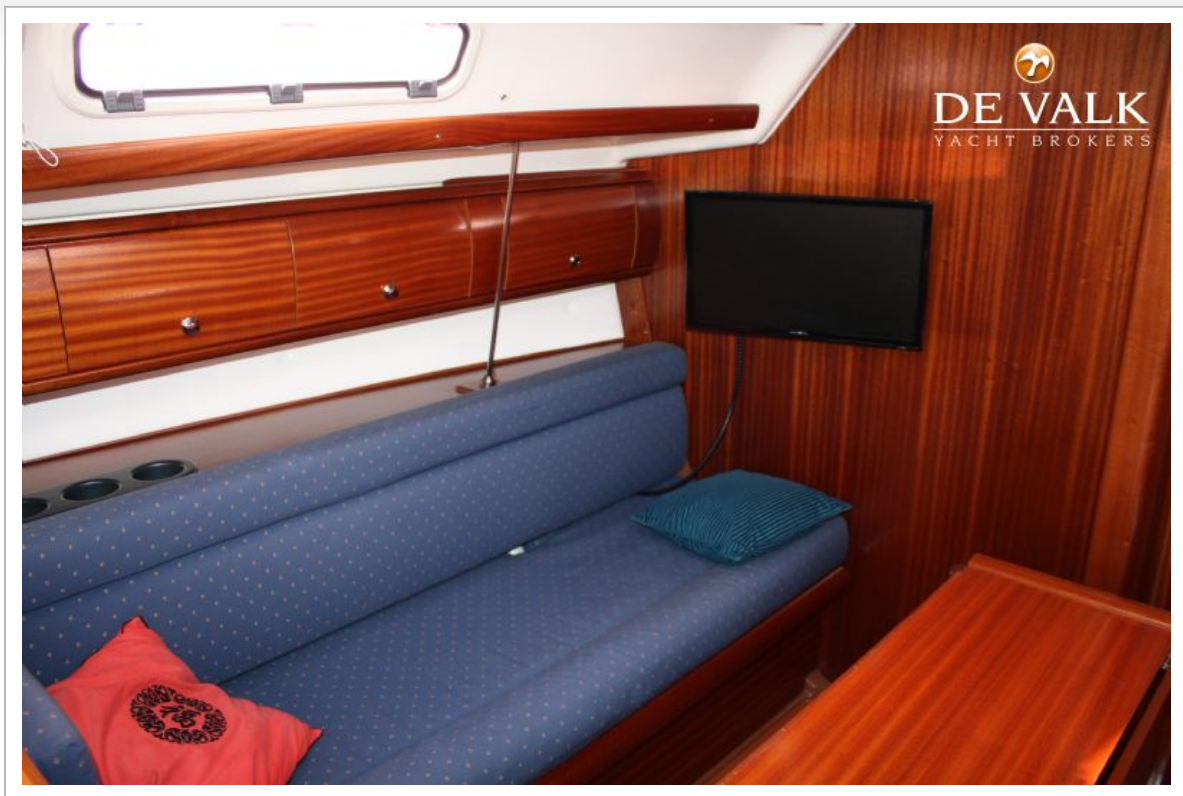
BAVARIA 36-2



BAVARIA 36-2

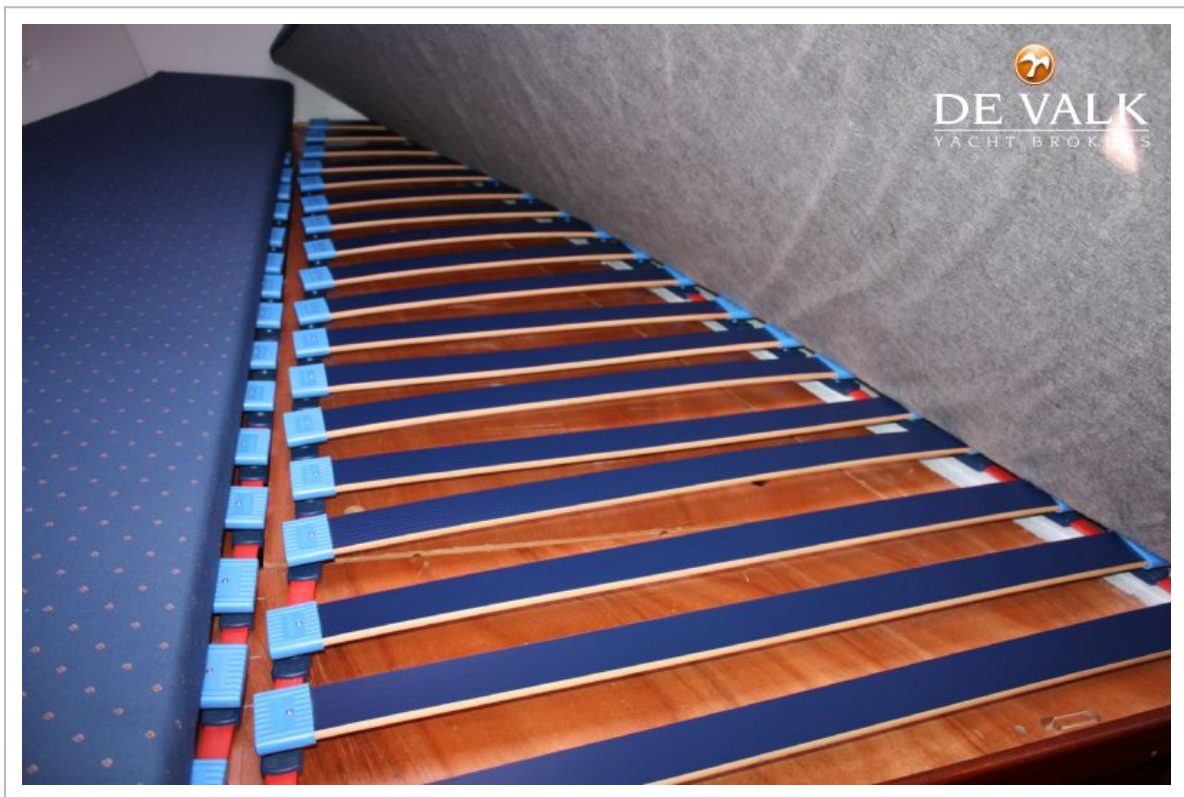


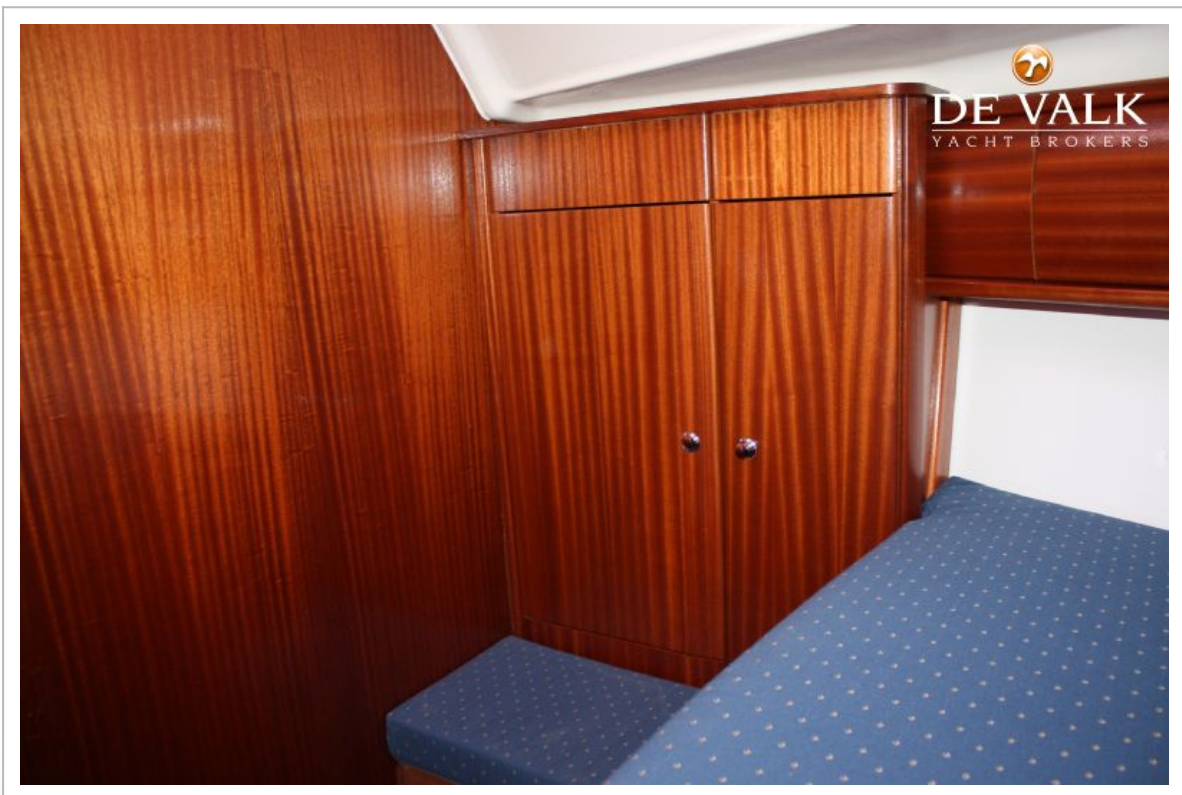
BAVARIA 36-2



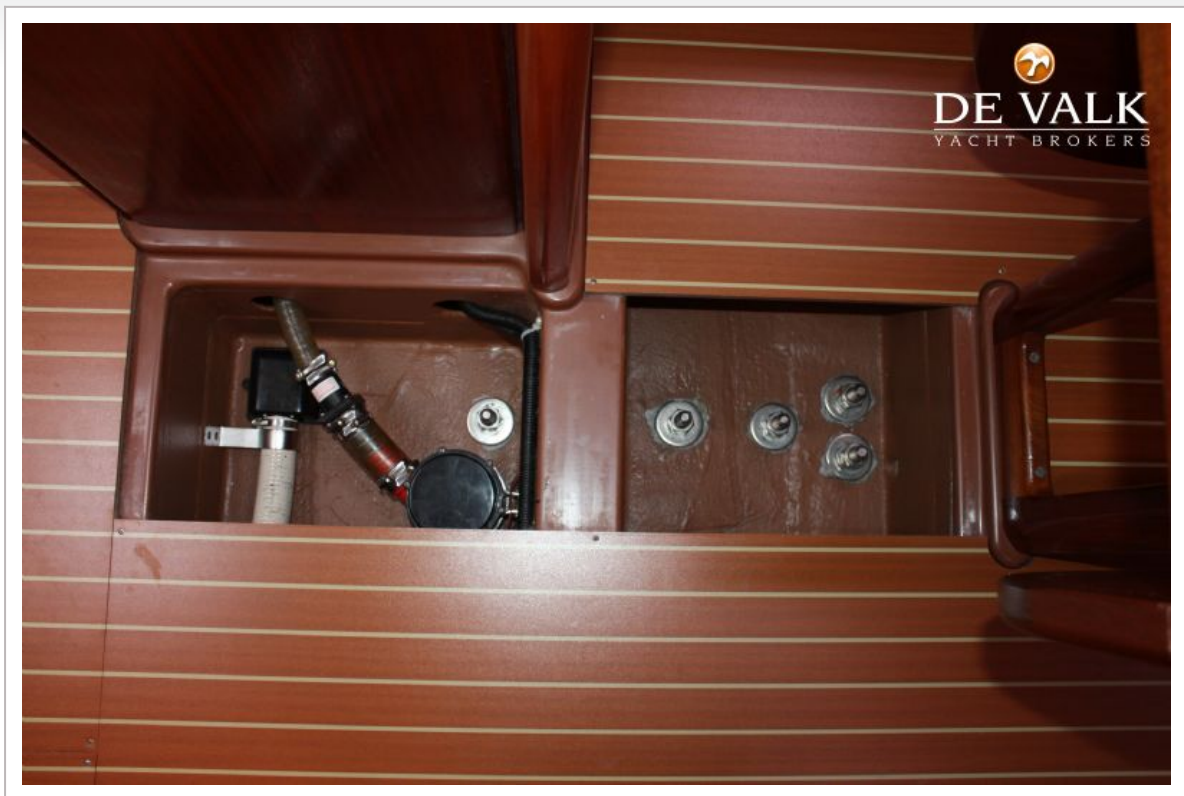
BAVARIA 36-2







BAVARIA 36-2



BAVARIA 36-2





BAVARIA 36-2

