



DE VALK
YACHT BROKERS



BAVARIA 33 CRUISER



DE VALK
YACHT BROKERS

BAVARIA 33 CRUISER

BROKER'S COMMENTS

Nice Bavaria 33 Cruiser from 2006. Good handling and sail performance with Elvstrom stoway sails. Thus very safe and comfortable to handle from the cockpit. Carefully maintained, has seen little use. Comes well equipped with autopilot, heating, bowthruster, etc. Surprisingly spacious below decks with ample headroom and full size double berths. Good stowage space to. The Cruiser series from Bavaria are considered to be the most successful and this 33 Cruiser will show you why.

Marc Weijenberg

SPECIFICATIONS

Dimensions	10.65 x 3.48 x 1.50 (m)	Builder	Bavaria Yachtbau GmbH
Built	2006	Cabins	2
Material	GRP	Berths	6
Engine(s)	1 x Volvo Penta D1-20B diesel	Hp/Kw	19.00 (hp), 13.97 (kw)
Asking price	sold (VAT)	Lying	at sales office

CONTACT

Sales office	De Valk Sint Annaland B.V.	Telephone	+31 (0)166 601 000
Address	Koelhuisweg 4 4697 RM Sint Annaland NL	E-mail	sintannaland@devalk.nl

DISCLAIMER

These particulars are given in good faith as supplied but cannot be guaranteed.



BAVARIA 33 CRUISER

GENERAL

Model	BAVARIA 33 CRUISER
Type	sailing yacht
LOA (m)	10,65
LWL (m)	9,00
Beam (m)	3,48
Draft (m)	1,50
Air draft (m)	14,82
Headroom (m)	1,90
Year built	2006
Builder	Bavaria Yachtbau GmbH
Country	Germany
Designer	J&J design
Displacement (t)	5,4
CE norm	A
Hull material	GRP
Hull colour	white
Hull shape	round-bilged
Keel type	tandem keel
Superstructure material	GRP
Deck material	GRP
Deck finish	anti-slip moulded in
Cockpit deck finish	teak
Window frame	aluminium
Window material	polycarbonate
Deckhatch	yes
Portholes	yes
Fuel tank (litre)	polyethylene 1 x 150
Freshwater tank (litre)	polyethylene 1 x 300
Blackwater tank (litre)	polyethylene 1 x 30
Blackwater tank extraction	deck extraction + uw line



BAVARIA 33 CRUISER

Wheel steering	cable steering Whitlock
Emergency tiller	yes

ACCOMMODATION

Cabins	2
Berths	6
Interior	mahogany
Floor	woodprint
Saloon	with L-shape settee
Headroom saloon (m)	1,90
Heating	diesel ducted hot air Webasto Airtop 2500
Chart table	yes
Convertible berth	2 x 2,00 x 0,60 mtr
Galley	yes
Countertop	plastic
Sink	stainless steel
Cooker	Bavaria 2 burner
Oven	Bavaria
Fridge	12v Combicool
Hot water system	220V + engine QL
Water pressure system	electrical
Owners cabin	double bed Forward / voor / vorne
Bed length (m)	with Latex mattress (2015) 2,00 x 1,90
Wardrobe	hanging and shelves 2 x
Bathroom	shared I
Toilet	shared
Toilet system	electric (2015)
Wash basin	in the bathroom
Shower	shared
Guest cabin 1	double bed Aft / achter / hinten
Bed length (m)	2,00 x 1,75



BAVARIA 33 CRUISER

Wardrobe	hanging and shelves
----------	---------------------

MACHINERY

No of engines	1
Make	Volvo Penta
Type	D1-20B
HP	19
kW	13,97
Fuel	diesel
Year installed	2006
Maximum speed (kn)	6,5
Cruising speed (kn)	6
Consumption (l/hr)	2,5
Engine hours	Ca 400
Engine cooling system	freshwater heat exchanger
Drive	sail-drive
Engine controls	bowden cable
Gearbox	mechanical Volvo Penta Saildrive
Bowthruster	electric Vetus 3kW
Exhaust	watercooled
Propeller type	fixed
Propeller blades	2
Manual bilge pump	1 x
Electric bilge pump	1 x
Electrical installation	12/220v
Start battery	1 x 60 amp
Service battery	2 x 140 amp (2015)
Bowthruster battery	1 x 55 amp
Battery monitor	yes
Battery charger	Mastervolt 12v/20A
Shorepower	with cable



BAVARIA 33 CRUISER

Extra info

Saildrive seal (2006) Enginehour indicator defect

NAVIGATION

Compass

Plastimo Horizon 135

Electric compass

via autopilot

Depth sounder

Raymarine ST60 Tridata

Log

Raymarine ST60 Tridata

Windset

Raymarine ST60

VHF

Standard Horizon GX1200 Class D DSC/Atis (2015)

Autopilot

Raymarine ST6002

Rudder angle indicator

via autopilot

GPS

Raymarine

Plotter

Raymarine C70

Electronic chart(s)

1 x (2007)

Extra info

cover for wheelpedestal and cockpit table

EQUIPMENT

Sprayhood

yes

Cockpit table

yes

Bathing platform

yes

Boarding ladder

stainless steel

Deck shower

hot + cold

Anchor

CQR Plough

Anchor chain

+ line

Sea railing

stainless steel

Grab rail (superstructure)

stainless steel

Pushpit

yes

Pulpit

yes

Lifebuoy

1 x

Radar reflector

yes

Fenders

yes



BAVARIA 33 CRUISER

Mooring lines	yes
Radio-cd player	VDO
Speakers in salon	yes
Clock - barometer	yes
Fire extinguisher	2 x

RIGGING

Rigging	sloop
Standing rigging	wire
Brand mast	Seldén
Material mast	aluminium
Spreaders	2 x
Mainsail	Elvstrom (2006)
Stoway mast	yes
Genoa	with UV strip Elvstrom 130% (2006)
Genoa furler	Furlex 200S
Genoa cover	yes
Reefing System	main in-mast furling
Backstay adjuster	tackle
Boomvang	mechanical Seldén Rodkicker
Genoa sheetwinches	2 x Lewmar 30ST
Halyard winches	2 x Lewmar 16ST
Extra info	LED lights in mast



BAVARIA 33 CRUISER



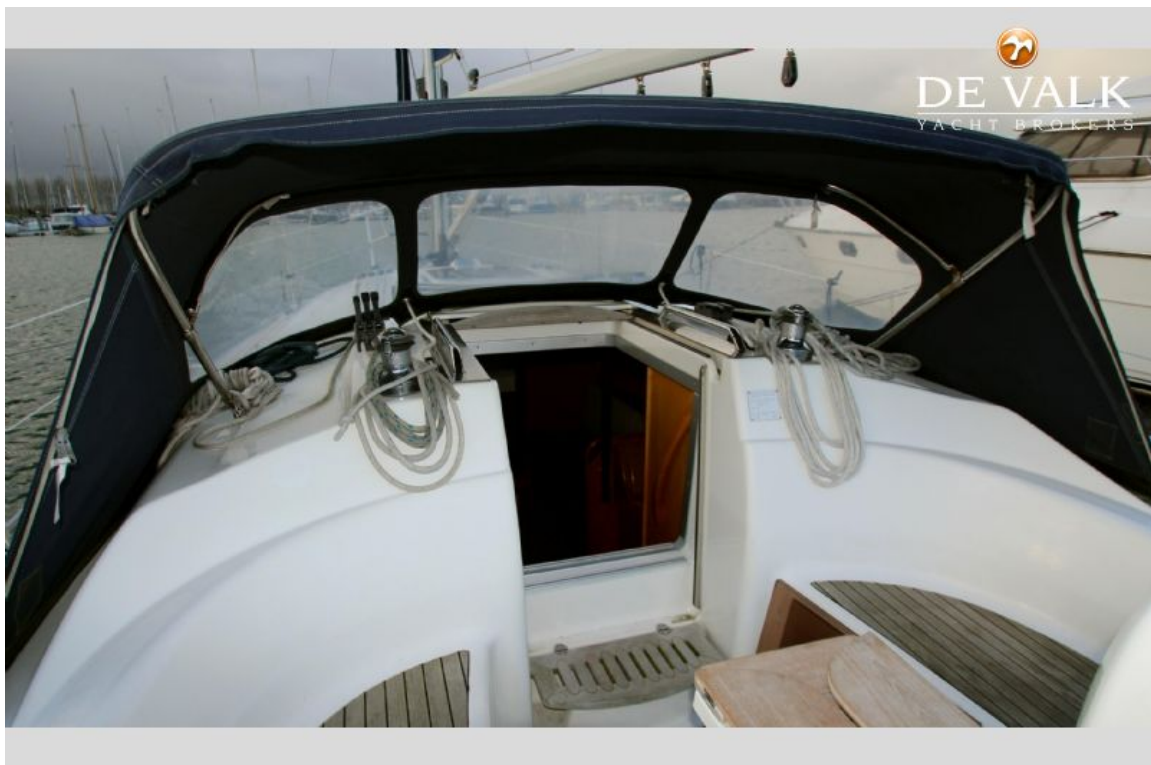
BAVARIA 33 CRUISER



BAVARIA 33 CRUISER



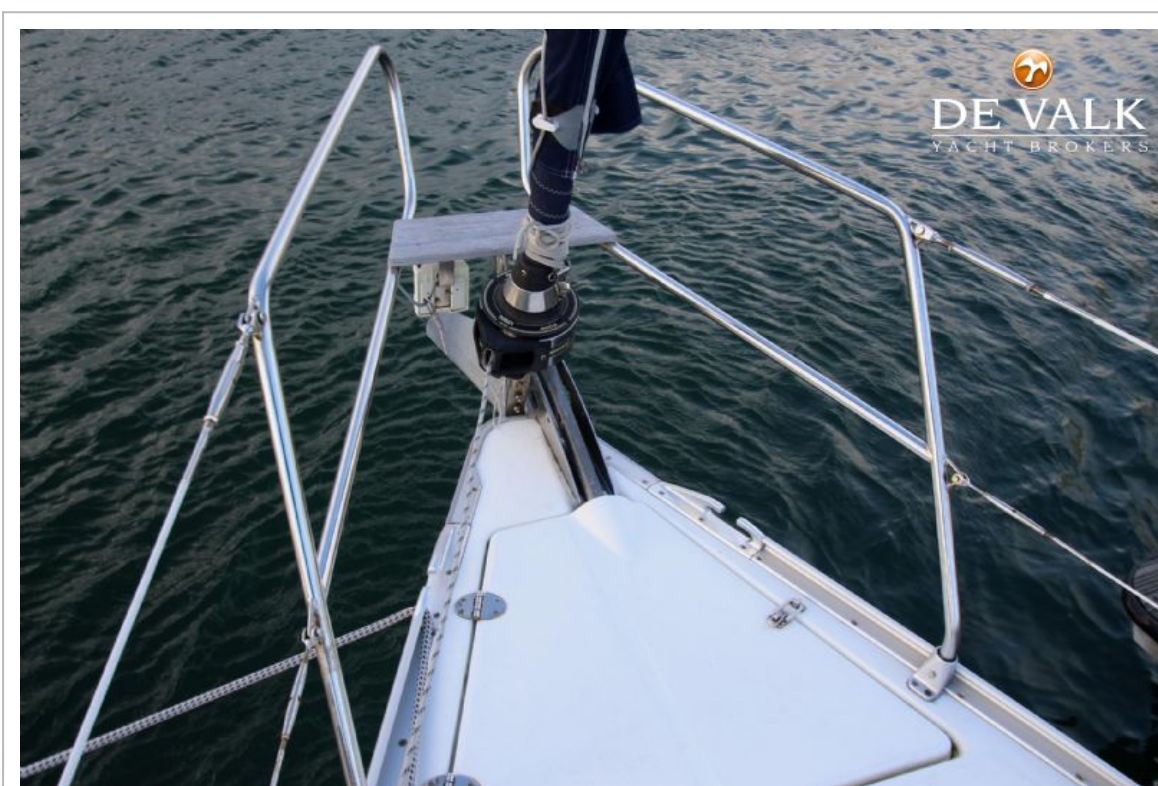
BAVARIA 33 CRUISER



BAVARIA 33 CRUISER



BAVARIA 33 CRUISER



BAVARIA 33 CRUISER



BAVARIA 33 CRUISER



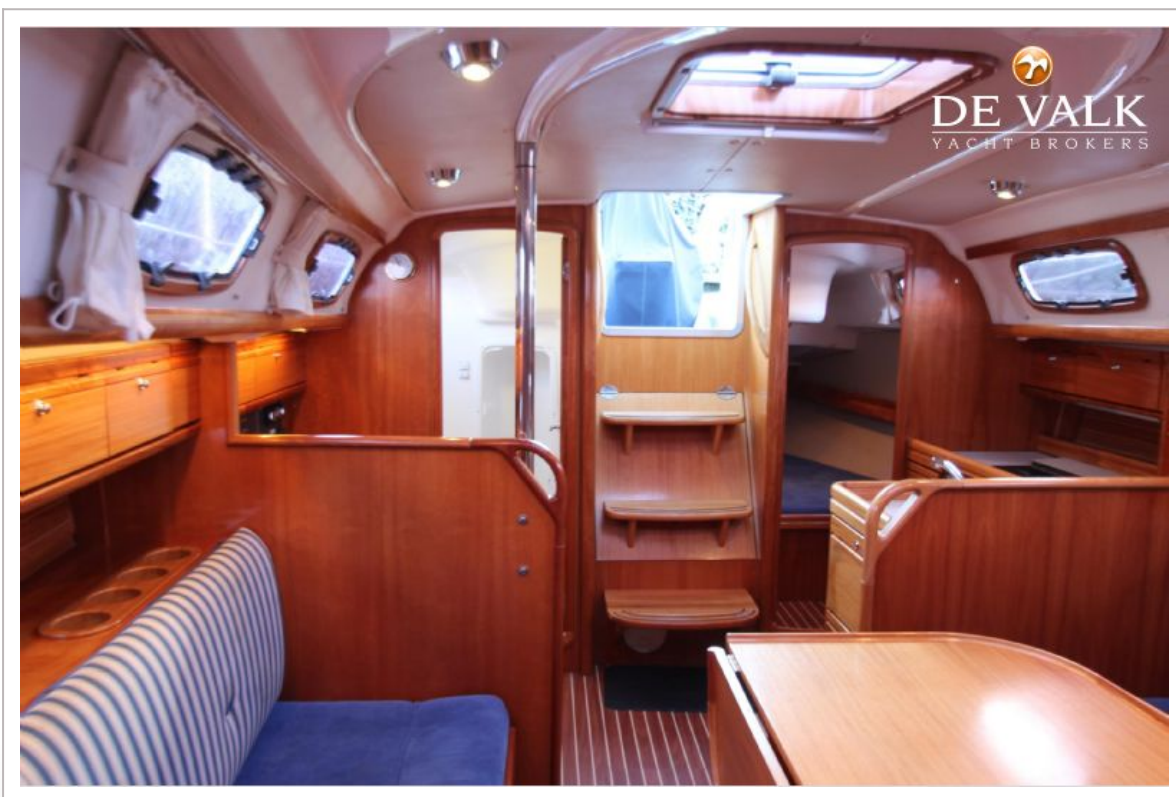
BAVARIA 33 CRUISER



BAVARIA 33 CRUISER



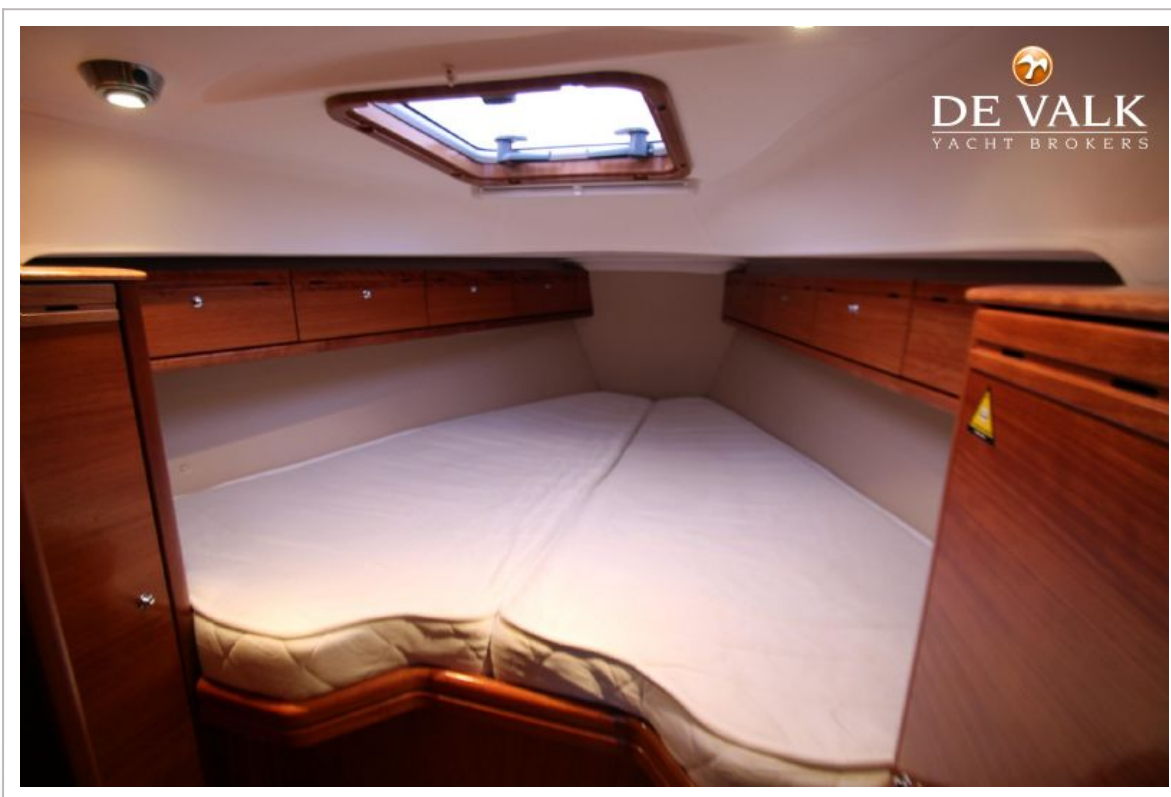
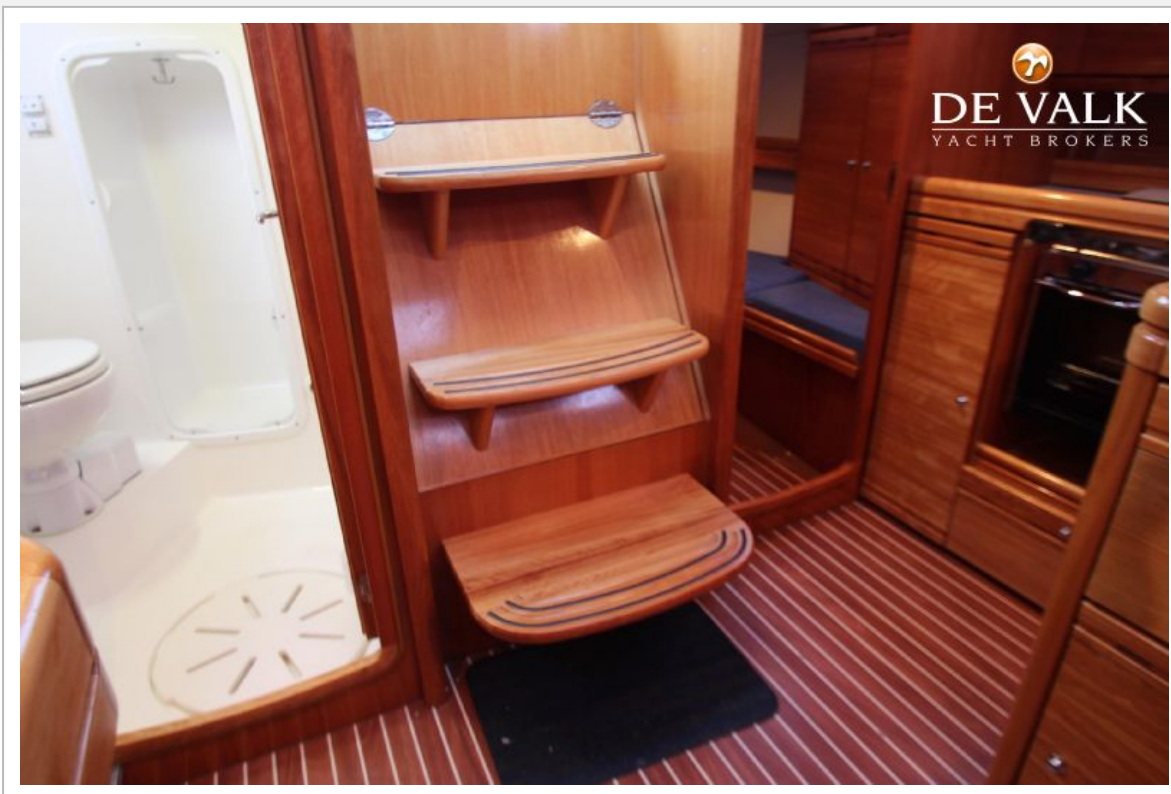
BAVARIA 33 CRUISER



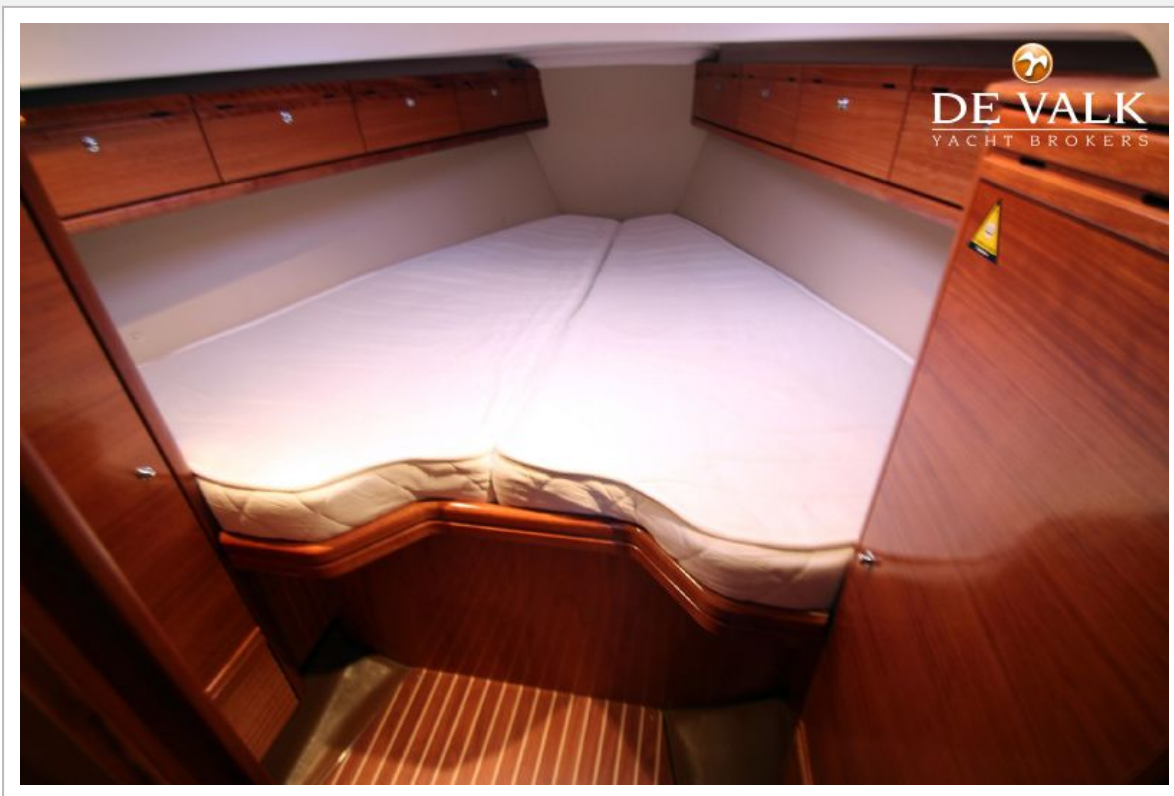
BAVARIA 33 CRUISER



BAVARIA 33 CRUISER



BAVARIA 33 CRUISER



BAVARIA 33 CRUISER



BAVARIA 33 CRUISER



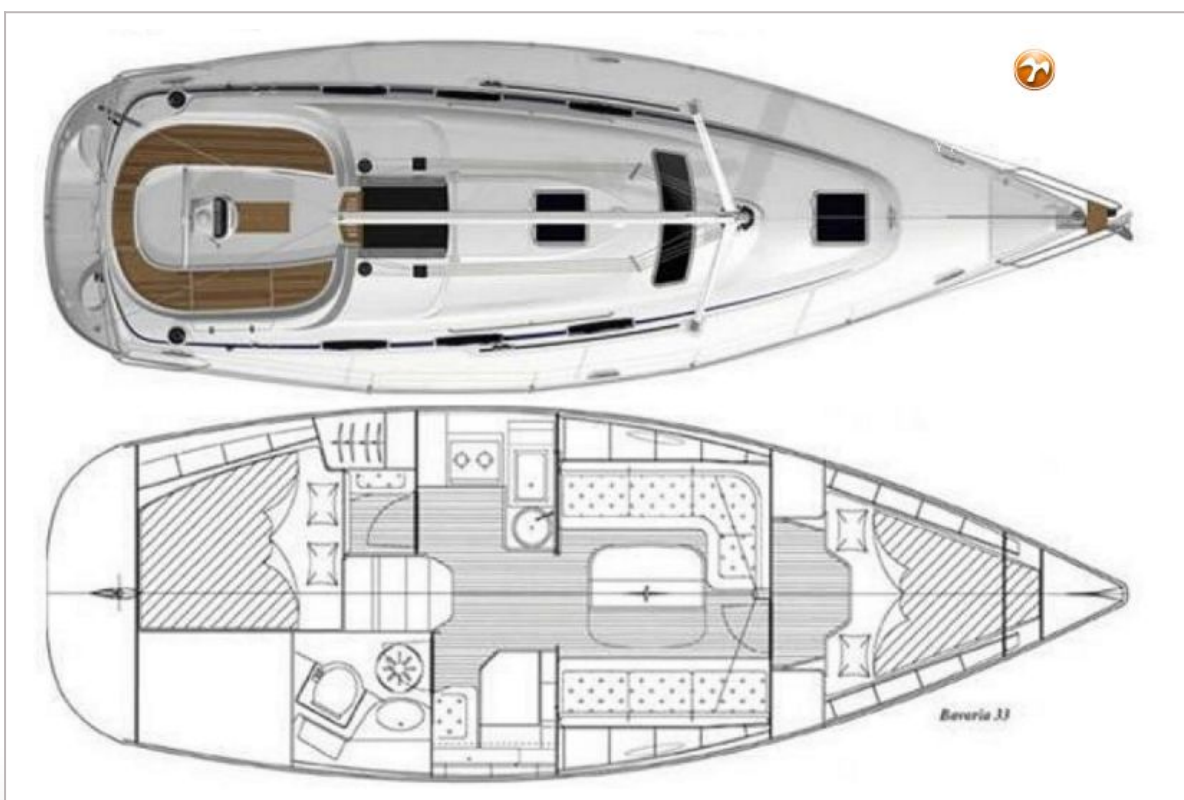
BAVARIA 33 CRUISER



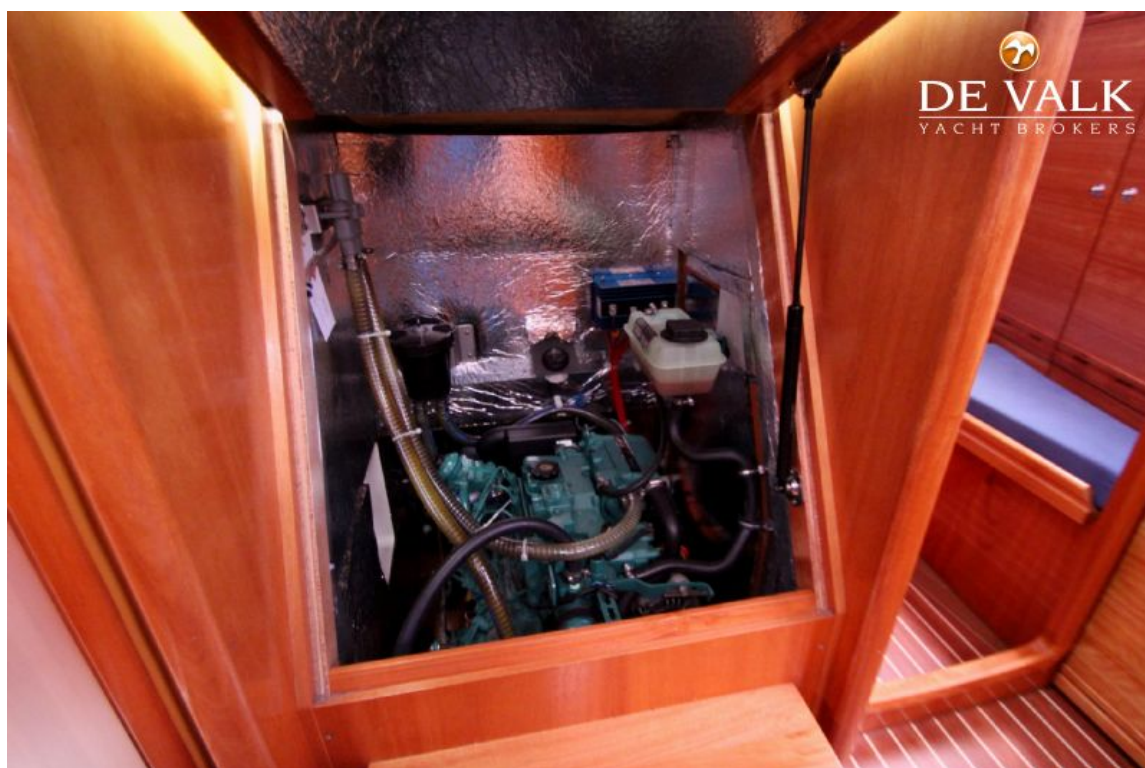
BAVARIA 33 CRUISER



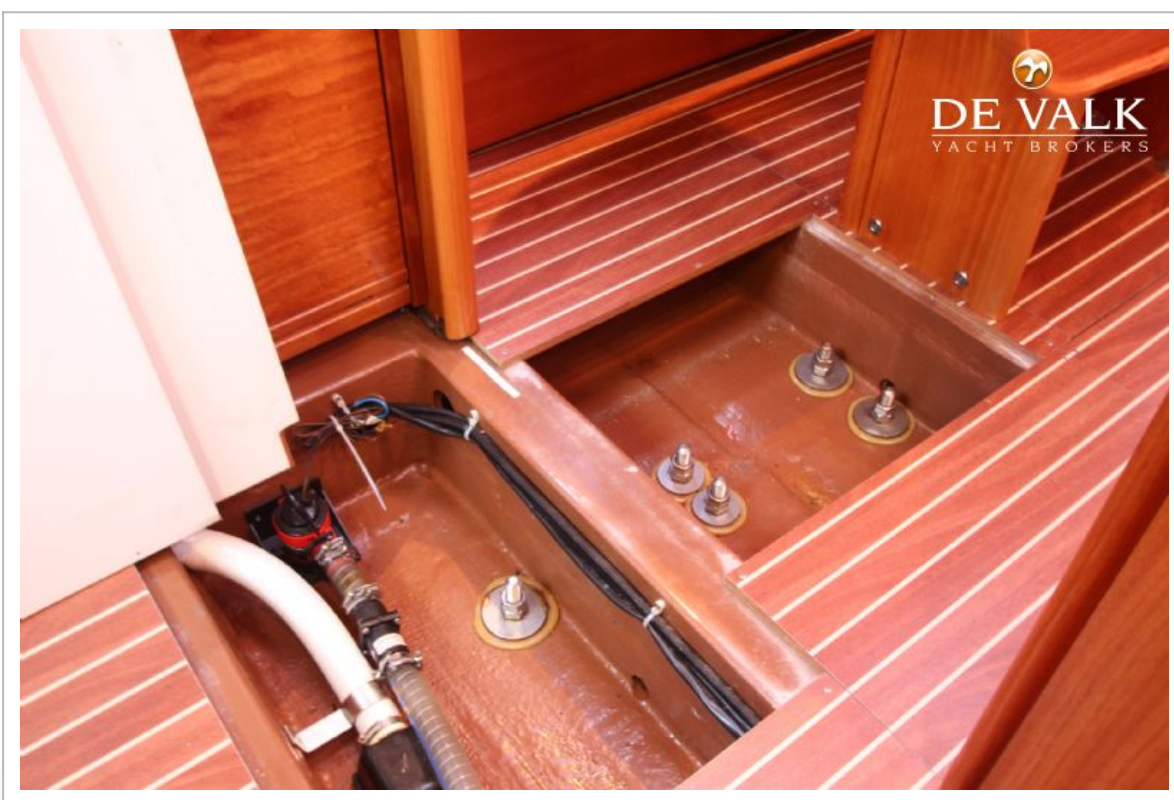
BAVARIA 33 CRUISER



BAVARIA 33 CRUISER



BAVARIA 33 CRUISER



BAVARIA 33 CRUISER

