



WAUQUIEZ PILOT SALOON 43



DE VALK
YACHT BROKERS

WAUQUIEZ PILOT SALOON 43

BROKER'S COMMENTS

'Fuga' is an excellent example of the Wauquiez 43PS and is an extremely well equipped boat, a real ocean cruiser. One of the last built to the highest standards. Performance of this Dubois designed yacht is up to the reputation of both the architect and the shipyard: High speed, easy motion even in rough conditions, powerful rig perfectly in control of a shorthanded crew. Electric winches, bow thruster, stoway sails make her an ideal yacht.

Reinier van der Wolf

SPECIFICATIONS

Dimensions	13.30 x 4.20 x 1.75 (m)	Builder	Wauquiez International SA
Built	2004	Cabins	3
Material	GRP	Berths	6
Engine(s)	1 x Yanmar 4JH3TE diesel	Hp/Kw	75.00 (hp), 55.13 (kw)
Asking price	sold (VAT)	Lying	elsewhere / Not at sales office

CONTACT

Sales office	De Valk Monnickendam B.V.	Telephone	+31 (0)299 65 63 50
Address	Hoogedijk 6 1145 PM Katwoude NL	E-mail	monnickendam@devalk.nl

DISCLAIMER

These particulars are given in good faith as supplied but cannot be guaranteed.



WAUQUIEZ PILOT SALOON 43

GENERAL

Model	WAUQUIEZ PILOT SALOON 43
Type	sailing yacht
LOA (m)	13,30
LWL (m)	10,80
Beam (m)	4,20
Draft (m)	1,75
Air draft (m)	19,50
Year built	2004
Builder	Wauquiez International SA
Country	France
Designer	Ed Dubois
Displacement (t)	12,5
Ballast (tonnes)	cast iron 4,8
CE norm	A
Hull material	GRP
Hull colour	white
Hull shape	round-bilged
Keel type	fin keel
Superstructure material	GRP
Deck material	GRP
Deck finish	teak
Cockpit deck finish	teak
Dorades	2x
Deckhatch	All with fly screens
Fuel tank (litre)	aluminium 600 L. in two tanks
Level indicator (fuel tank)	yes
Fuel daytank (litre)	aluminium 400 L.
Level indicator (daytank)	yes
Blackwater tank (litre)	1x 150 L.
Level indicator (blackwater)	yes



WAUQUIEZ PILOT SALOON 43

Wheel steering	mechanical Withlock, 44"
Outside helm position	yes
Emergency tiller	yes
More info on hull	Sandwich of class-fibre and vinylester/polyester.
More info on paintwork	Underwater ship cleaned every year, and painted if nessesary.
Extra info	Whitlock cockpit steering gear with single level engine control.
Extra info	Balanced spade rudder.

ACCOMMODATION

Cabins	3
Berths	6
Interior	teak Burmese
Layout	yes
Deck saloon	yes
Pilot house/deck saloon	yes
Saloon	yes
Heating	diesel ducted hot air Eberspacher D5L
Chart table	yes
Dinette to convert into berth	yes
Sliding door to cockpit	yes
Galley	U-shaped
Countertop	Synthetic marble
Sink	stainless steel 2x with mixer tap
Cooker	Eno two burner
Oven	Eno
Microwave	Sharp
Fridge	1x Frigoboat + 1x Isotherm
Hot water system	220V + engine Quick boiler
Owners cabin	double bed Seperate mattresses
Wardrobe	yes
Bathroom	en suite



Toilet	yes
Wash basin	yes
Shower	yes
Guest cabin 1	double bed Seperate mattresses
Wardrobe	yes
Bathroom	shared
Toilet	yes
Wash basin	yes
Shower	yes
Guest cabin 2	bunk bed
Washing machine	2015 - in engine room
Extra info	Two new compressors for cooling and freezer with seawatercooling
Extra info	Extra induction burner.

MACHINERY

No of engines	1
Make	Yanmar
Type	4JH3TE
HP	75,00
kW	55,13
Fuel	diesel
Year installed	2004
Maximum speed (kn)	8
Engine hours	1650 (11-12-2015)
Drive	shaft
Bowthruster	7 hp Tunnel
Propeller type	feathering Max prop
Propeller blades	Three bladed
Manual bilge pump	yes
Electric bilge pump	yes



Electrical installation	Seperate 12V circuit
Generator	Mastervolt Diesel
Batteries	2014
Service battery	6 service batteries of 2014
Bowthruster battery	2014
Battery monitor	yes
Battery charger	Mastervolt
Inverter	12vDC/220V AC Mastervolt 1200W
Wind generator	300 W.
Solar panel	250 W.
Shorepower	with cable
Watermaker	Preperations are there
Extra info	Engine and generator serviced every 150 hours.
Extra info	Raccor fuel/water separator, 12V Alternator (70A/h/ capacity).
Extra info	Henderson manual and electrical evacuation pumps.

NAVIGATION

Compass	Suunto on pedestal
Depth sounder	Echopilot with connection for VHF horn
Forw. looking depth sounder	yes
Windset	Raymarine ST60
VHF	Simrad RS87 with Atis/GMDSS
Autopilot	with remote control Raymarine 6001
Plotter	Raymarine C80 + Raymarine C120
Navtex	ICS Nav 6
Extra info	Raymaring ST60 mult meter, Weatherman radio telex, barograph.

EQUIPMENT

Sprayhood	yes
Cockpit cover	yes



WAUQUIEZ PILOT SALOON 43

Bimini	yes
Cockpit table	Casamare telescopic
Bathing platform	yes
Boarding ladder	stainless steel Incorporated in folding out platform.
Deck shower	Hot and cold water
Anchor	CQR Plough 45lb.
Anchor chain	60 m. (10mm) + 30. warp
Anchor 2	45 lb stern anchor with custom made cradle on push pit.wi
Windlass	electrical Lewmar
Deck wash	for anchor
Dinghy	2,60 M. (2015)
Outboard	5pk 4T Mercury (2015)
Davits	yes
Pushpit	S/s
Life raft	2014
Life raft (pers)	6
Last life raft survey	2015
Safety lines on deck	yes
Spare parts	yes
TV	yes
Radio-cd player	JVC
Cockpit speakers	yes
Speakers in salon	yes
Clock - barometer	Wempe
Extra info	Imarsat phone. All in- and outside lighting replaced with led.
Extra info	Forestay renewed.
Extra info	Diving equipment on board, bottle 7L x 200 bar.

RIGGING

Brand mast	Sparcraft
Material mast	aluminium coated



WAUQUIEZ PILOT SALOON 43

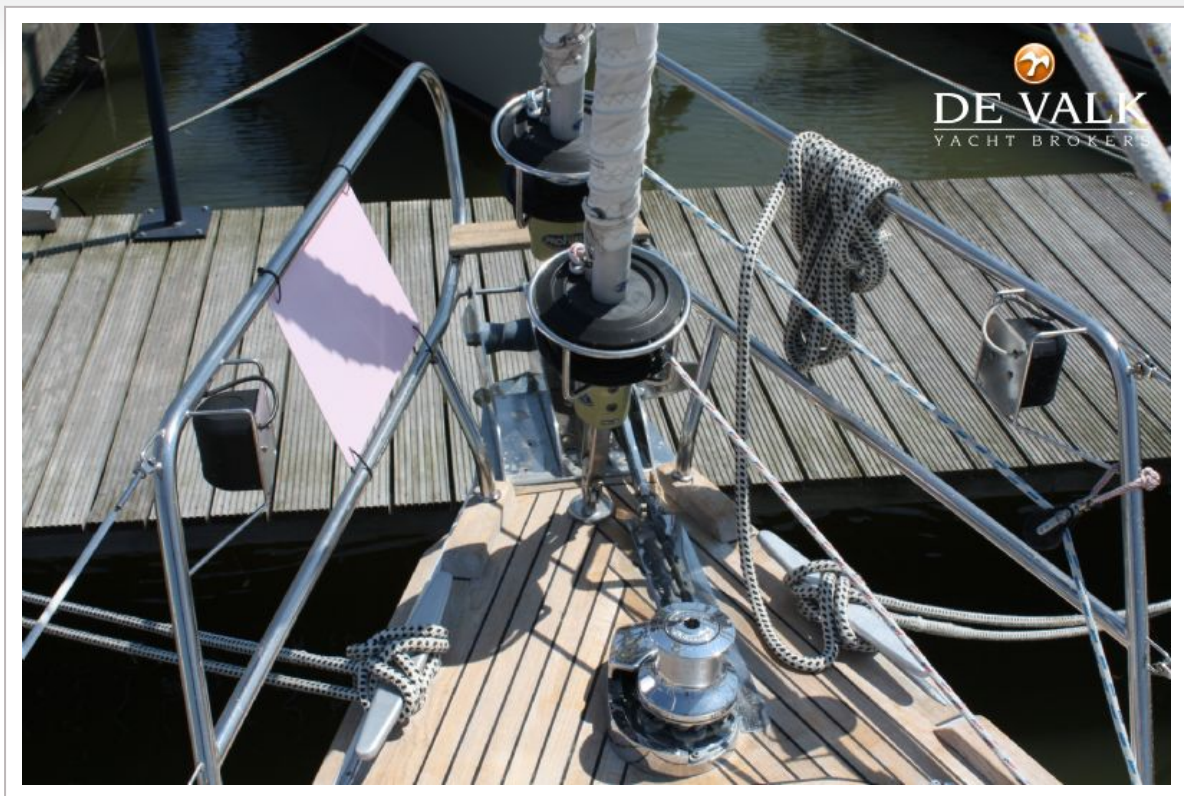
Spreaders	yes
Mainsail	2014
Furling boom	Sparcraft
Jib	Solent jib; horizontal cut / heavy Dacron
Genoa	Mylar/polyester with Dacron taffetas for UV and wear protection
Genoa furler	Profurl
Gennaker	yes
Spinnaker	Spinnaker gear with anodized spinnaker pole with stowage on mast
Primary sheet winch	1x Anderson 46ST two speed
Secondary sheet winch	1x Anderson 40ST two speed
Genoa sheetwinches	2x Anderson 52ST two speed electric
Reefing winch	1x Anderson 40ST two speed electric
Extra info	Running rigging partly renewed.



WAUQUIEZ PILOT SALOON 43



WAUQUIEZ PILOT SALOON 43



WAUQUIEZ PILOT SALOON 43



WAUQUIEZ PILOT SALOON 43



WAUQUIEZ PILOT SALOON 43



WAUQUIEZ PILOT SALOON 43



WAUQUIEZ PILOT SALOON 43



WAUQUIEZ PILOT SALOON 43



WAUQUIEZ PILOT SALOON 43



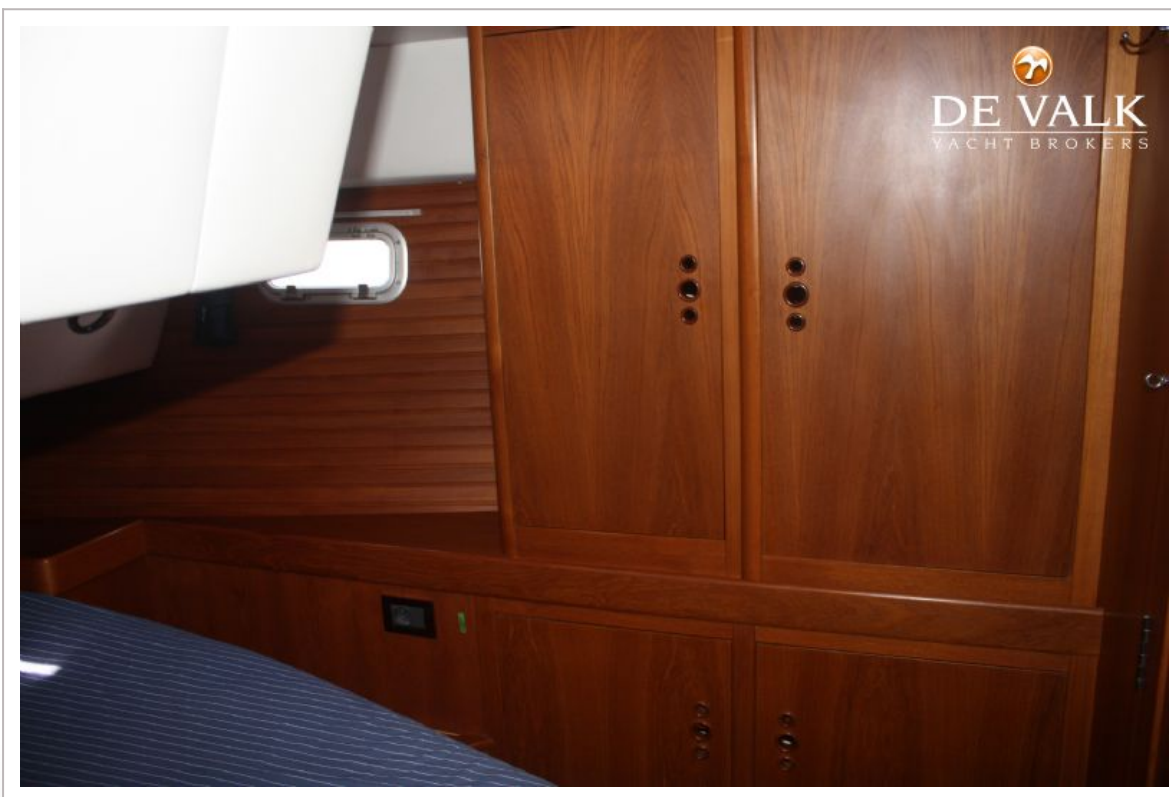
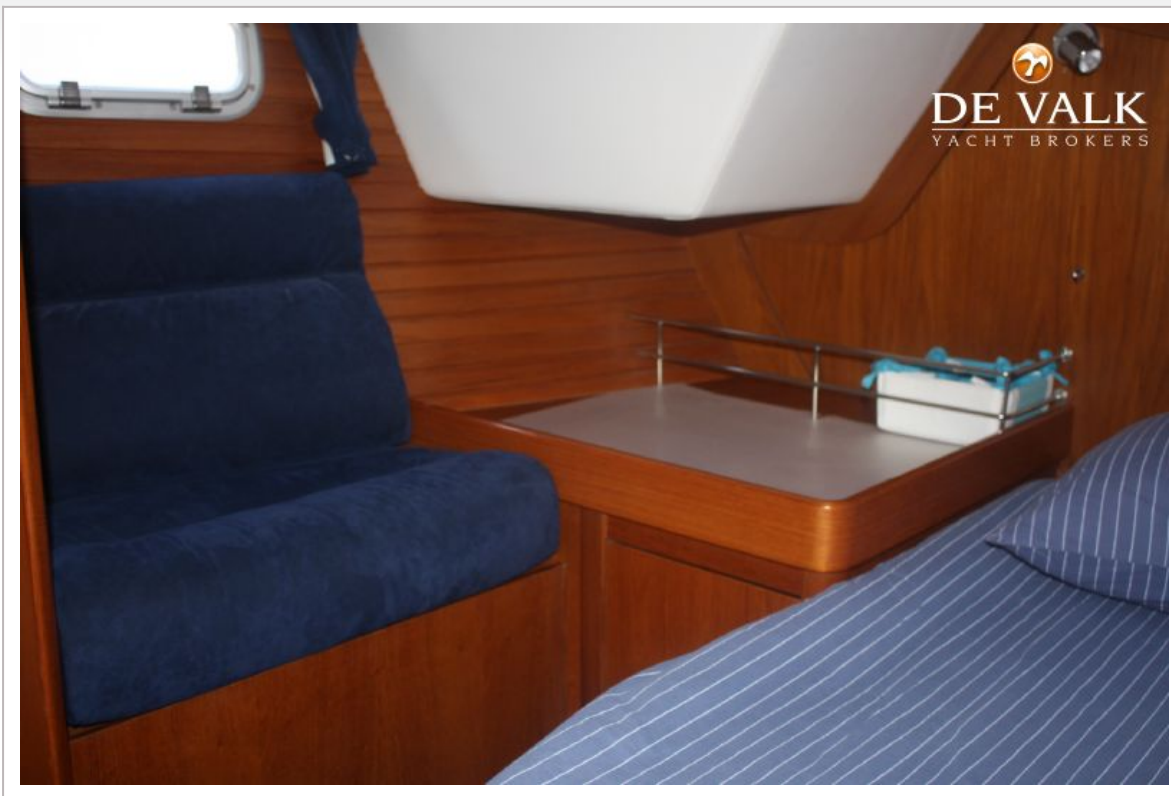
WAUQUIEZ PILOT SALOON 43

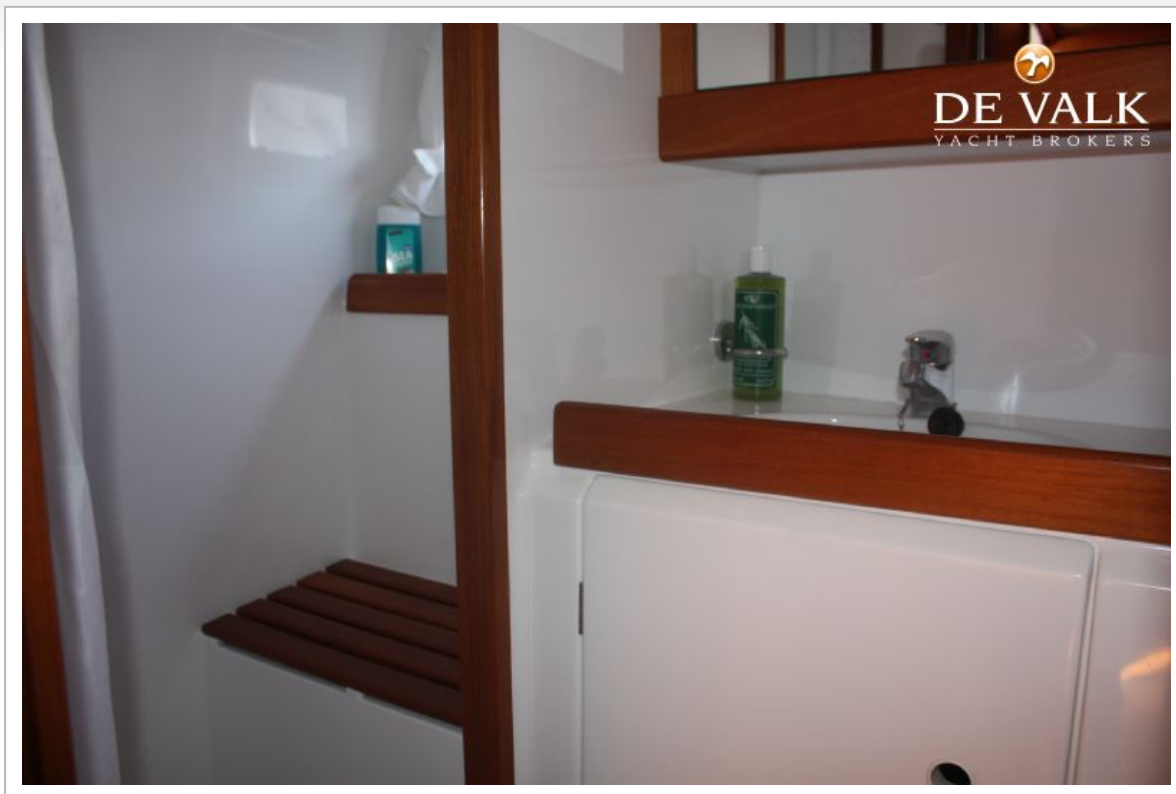


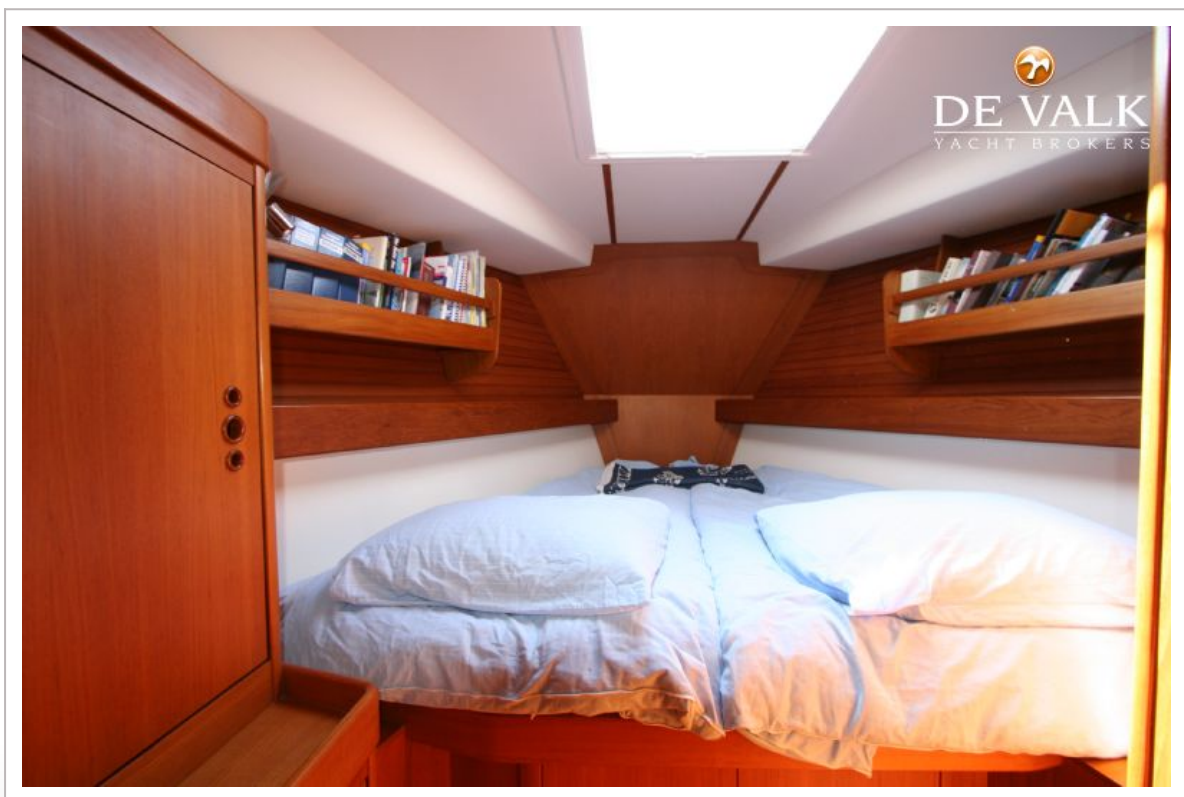
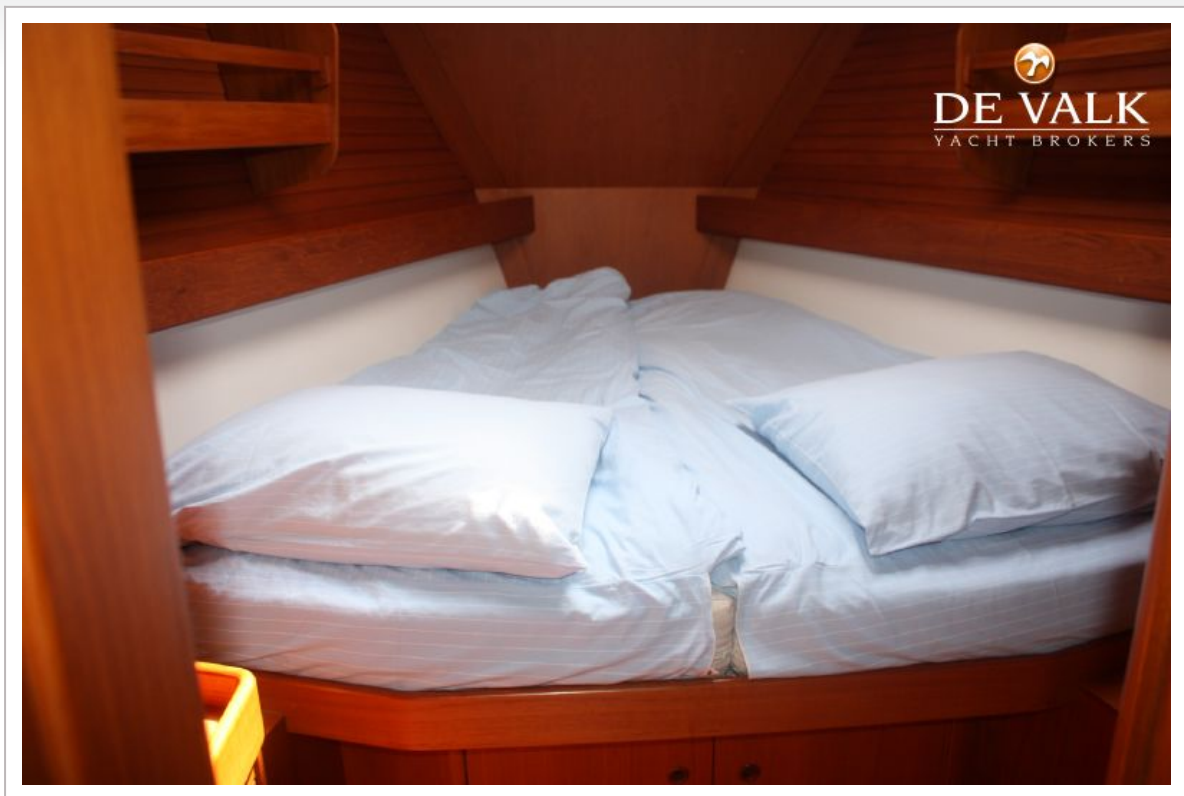
WAUQUIEZ PILOT SALOON 43



WAUQUIEZ PILOT SALOON 43







WAUQUIEZ PILOT SALOON 43

