



DE VALK  
YACHT BROKERS



## VALKKRUISER 1400 SPORT



DE VALK  
YACHT BROKERS

# VALKKRUISER 1 400 SPORT

## BROKER'S COMMENTS

This sporty looking Valkkruiser Sport with spacious lounge is very well thought out and in very good condition. From 2013 thru 2016, this ship has undergone many renewals. The Valkkruiser Sport is equipped with a WhisperPower generator, Kabola central heating, bow thruster, large water- and fuel tanks. Together with her low draft she's very suitable to sail the European inland waterways.

*Harald Padberg*

## SPECIFICATIONS

<b>Dimensions</b>	14.00 x 4.30 x 1.10 (m)	<b>Builder</b>	G. van der Valk
<b>Built</b>	2001	<b>Cabins</b>	2
<b>Material</b>	Steel	<b>Berths</b>	8
<b>Engine(s)</b>	1 x Vetus Deutz BF6M 1012 E diesel	<b>Hp/Kw</b>	159.00 (hp), 116.87 (kw)
<b>Asking price</b>	sold (VAT )	<b>Lying</b>	contact Monnickendam

## CONTACT

<b>Sales office</b>	De Valk Monnickendam	<b>Telephone</b>	+31 299 65 63 50
<b>Address</b>	Hoogedijk 6 1145 PM Katwoude The Netherlands	<b>E-mail</b>	monnickendam@devalk.nl

## DISCLAIMER

These particulars are given in good faith as supplied but cannot be guaranteed.



# VALKKRUISER 1400 SPORT

## GENERAL

<b>Model</b>	VALKKRUISER 1400 SPORT
<b>Type</b>	motor yacht
<b>LOA (m)</b>	14,00
<b>Beam (m)</b>	4,30
<b>Draft (m)</b>	1,10
<b>Air draft (m)</b>	2,65
<b>Headroom (m)</b>	2,00
<b>Year built</b>	2001
<b>Builder</b>	G. van der Valk
<b>Country</b>	The Netherlands
<b>Displacement (t)</b>	12
<b>Hull material</b>	steel
<b>Hull colour</b>	blue Metallic
<b>Deck material</b>	steel
<b>Deck finish</b>	non-skid paint
<b>Antifouling (year)</b>	2014
<b>Window frame</b>	aluminium
<b>Portholes</b>	aluminium
<b>Radar arch</b>	collapsible Stainless steel
<b>Fuel tank (litre)</b>	Approx 400 L.
<b>Fuel tank 2 (litre)</b>	Approx 400 L.
<b>Level indicator (fuel tank)</b>	yes
<b>Freshwater tank (litre)</b>	2x approx 400 L.
<b>Blackwater tank (litre)</b>	Approx 200 L.
<b>Wheel steering</b>	hydraulic
<b>More info on paintwork</b>	in 2014 are the old layers of antifouling removed and reapplied

## ACCOMMODATION

<b>Cabins</b>	2
<b>Berths</b>	8



# VALKKRUISER 1400 SPORT

Floor	carpet
Open cockpit	yes
Saloon	yes
Headroom saloon (m)	2 M.
Heating	diesel ducted hot air Kabola - kickspace
Dining room	yes
Dinette	yes
Dinette to convert into berth	yes
Opening door to cockpit	yes
Galley	yes
Countertop	yes
Sink	
Cooker	ceramic Atag
Oven	yes
Fridge	2x Isotherm
Hot water system	Boiler 55 L.
Water pressure system	electrical
Owners cabin	double bed
Bed length (m)	2.20 M.
Wardrobe	hanging/drawers/shelves
Guest cabin 1	double bed
Bed length (m)	2.30 M.
Wardrobe	hanging/drawers/shelves
Extra info	2014 new mattresses. Bunk bed in aft owner's cabin can be easily removed. 2016 new carpet and upholstery in saloon.
Extra info	shared bathroom with electric toilet, sink and big shower accessible from the saloon

## MACHINERY

No of engines	1
Make	Vetus Deutz
Type	BF6M 1012 E



# VALKKRUISER 1400 SPORT

<b>HP</b>	159,00
<b>kW</b>	116,87
<b>Fuel</b>	diesel
<b>Year installed</b>	2001
<b>Engine hours</b>	1807 (13-9-2016)
<b>Drive</b>	shaft
<b>Engine controls</b>	bowden cable
<b>Gearbox</b>	hydraulic
<b>Bowthruster</b>	(2016)
<b>Electric bilge pump</b>	yes
<b>Generator</b>	wet exhaust 2011 - Whisperpower M-SQ6 5.7 Kw
<b>Batteries</b>	(2014) 6x 200 amp
<b>Battery monitor</b>	yes
<b>Battery charger</b>	Mastervolt Mass 24/50
<b>Battery charger/inverter</b>	Whisper Power 24V-3500W-90A
<b>Shorepower</b>	with cable

## NAVIGATION

<b>Depth sounder/log</b>	yes
<b>VHF handheld</b>	yes
<b>Autopilot</b>	Raymarine ST70 + remote smart controller
<b>Rudder angle indicator</b>	yes
<b>Plotter/GPS</b>	Raymarine c70
<b>Searchlight</b>	Electric

## EQUIPMENT

<b>Fixed windscreen</b>	yes
<b>Cockpit cover</b>	yes
<b>Bimini</b>	yes
<b>Cockpit cushions</b>	yes
<b>Cockpit table</b>	yes



# VALKKRUISER 1400 SPORT

Cockpit chairs	yes
Bathing platform	yes
Boarding ladder	stainless steel
Gangway	yes
Anchor	yes
Windlass	electrical 1000 W.
Davits	stainless steel
Davits controls	manual
Sea railing	stainless steel
Railing side opening gates	yes
Wiper	3x
Horn	air pressure
Fenders	yes
Mooring lines	yes
TV	yes
Radio-cd player	yes
Cockpit speakers	yes
Speakers in salon	yes
Clock - barometer	yes
Extra info	2014 new windows in convertible cover. 2014 outside shower with thermostat on rear platform.



# VALKKRUISER 1400 SPORT



# VALKKRUISER 1400 SPORT





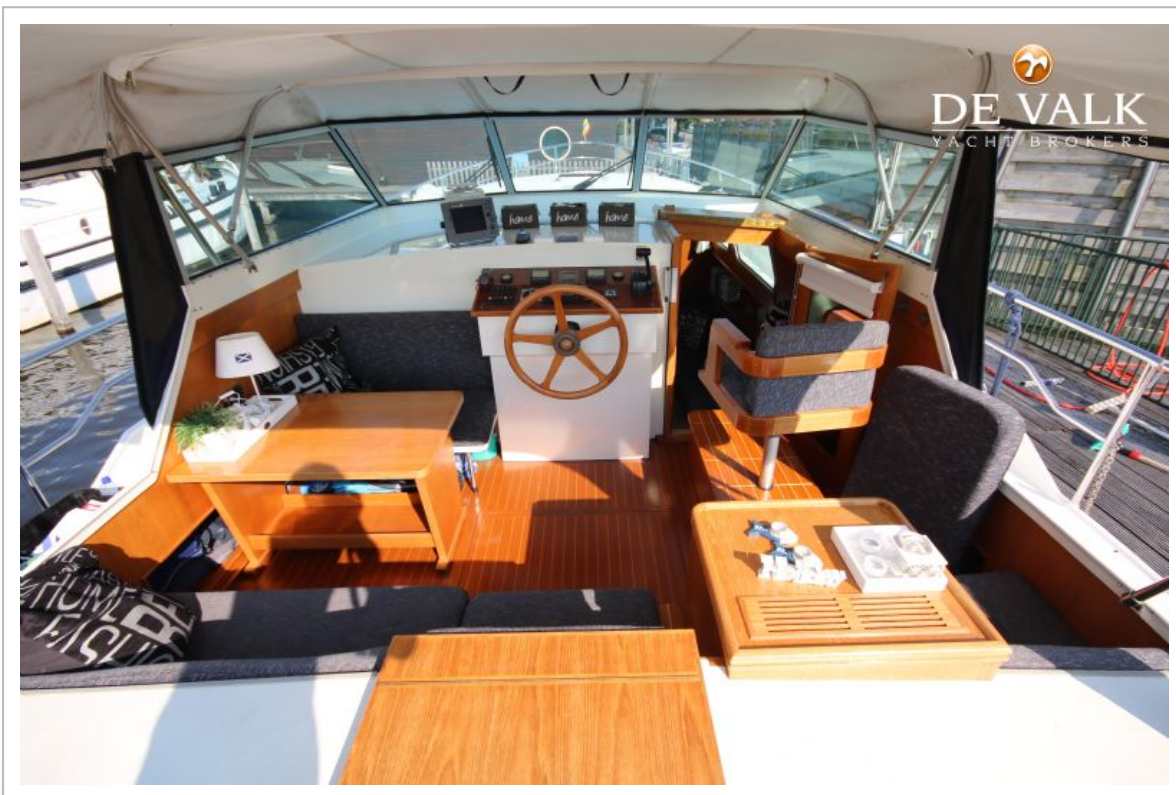
# VALKKRUISER 1400 SPORT



# VALKKRUISER 1400 SPORT



# VALKKRUISER 1400 SPORT



# VALKKRUISER 1400 SPORT



# VALKKRUISER 1400 SPORT



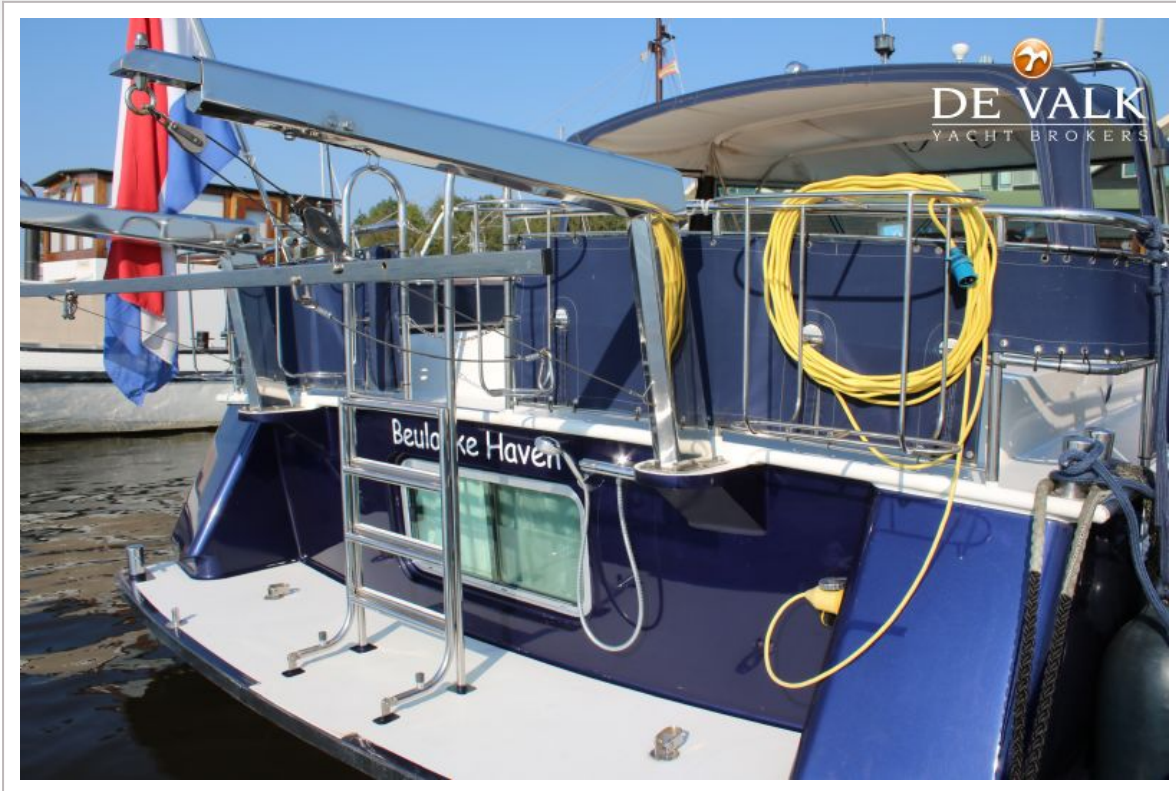
# VALKKRUISER 1400 SPORT



# VALKKRUISER 1400 SPORT

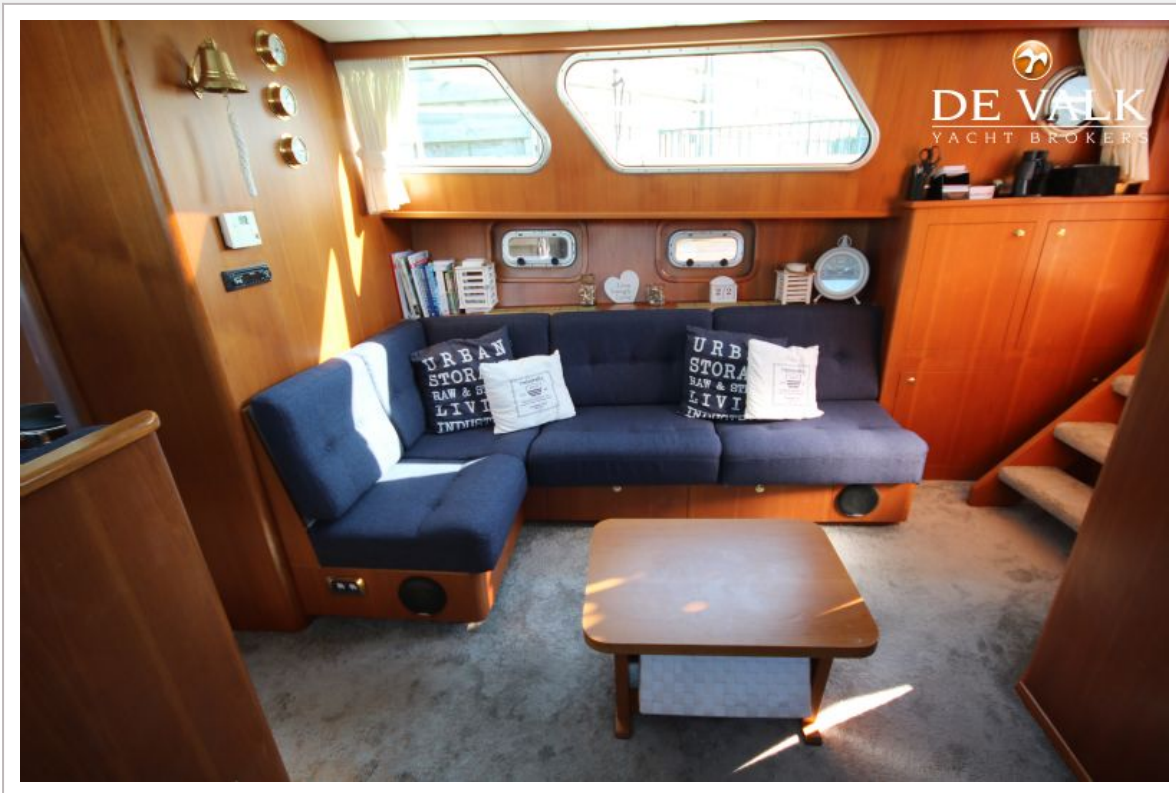


# VALKKRUISER 1400 SPORT





# VALKKRUISER 1400 SPORT



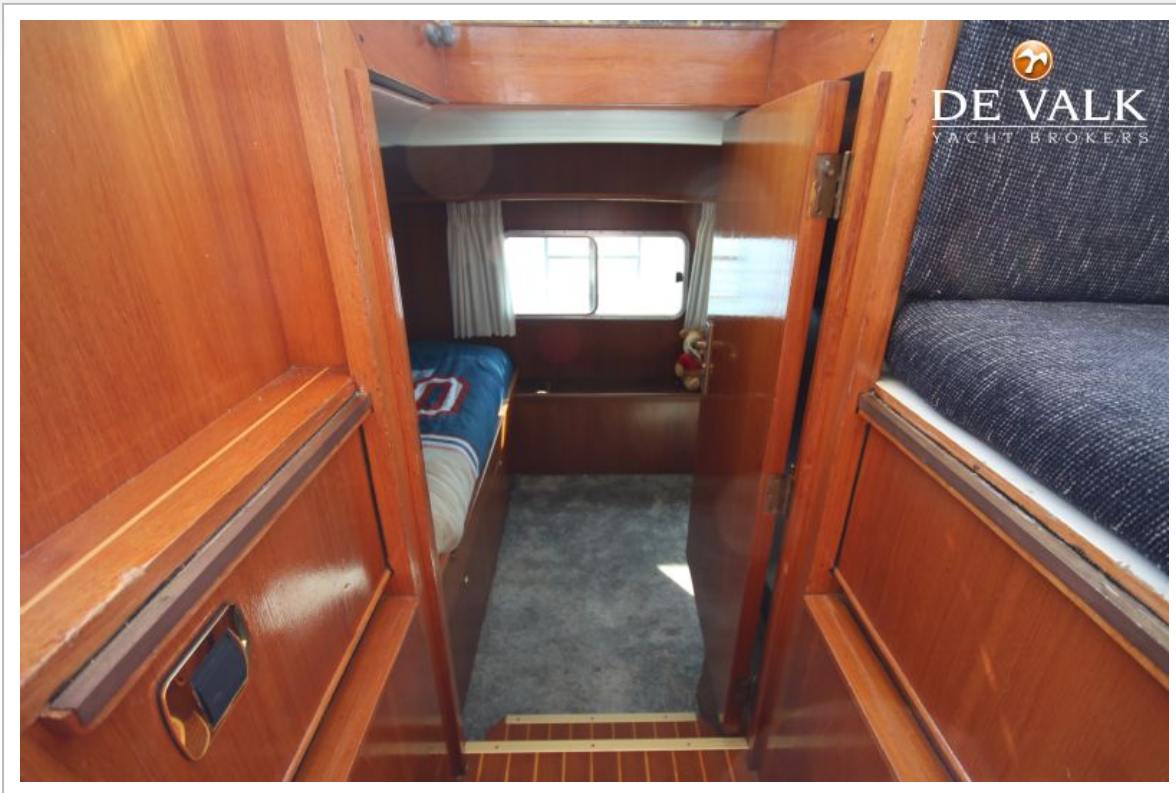
# VALKKRUISER 1400 SPORT



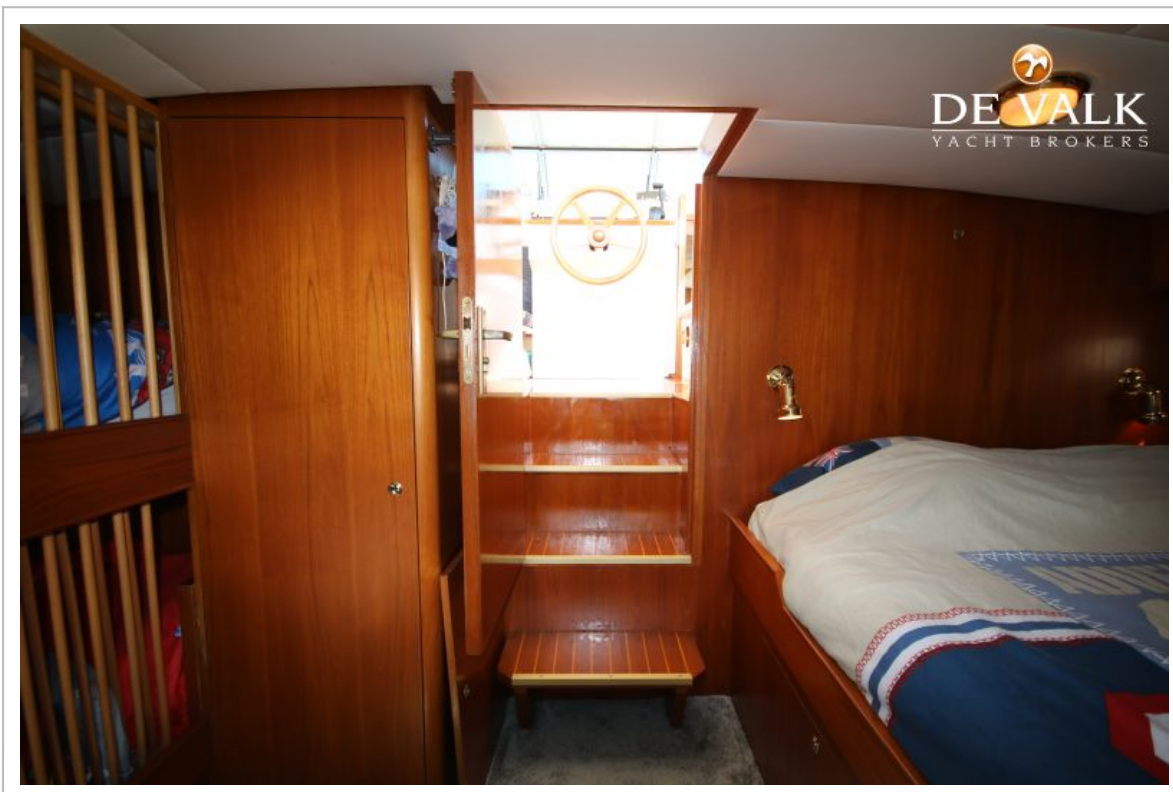
# VALKKRUISER 1400 SPORT



# VALKKRUISER 1400 SPORT



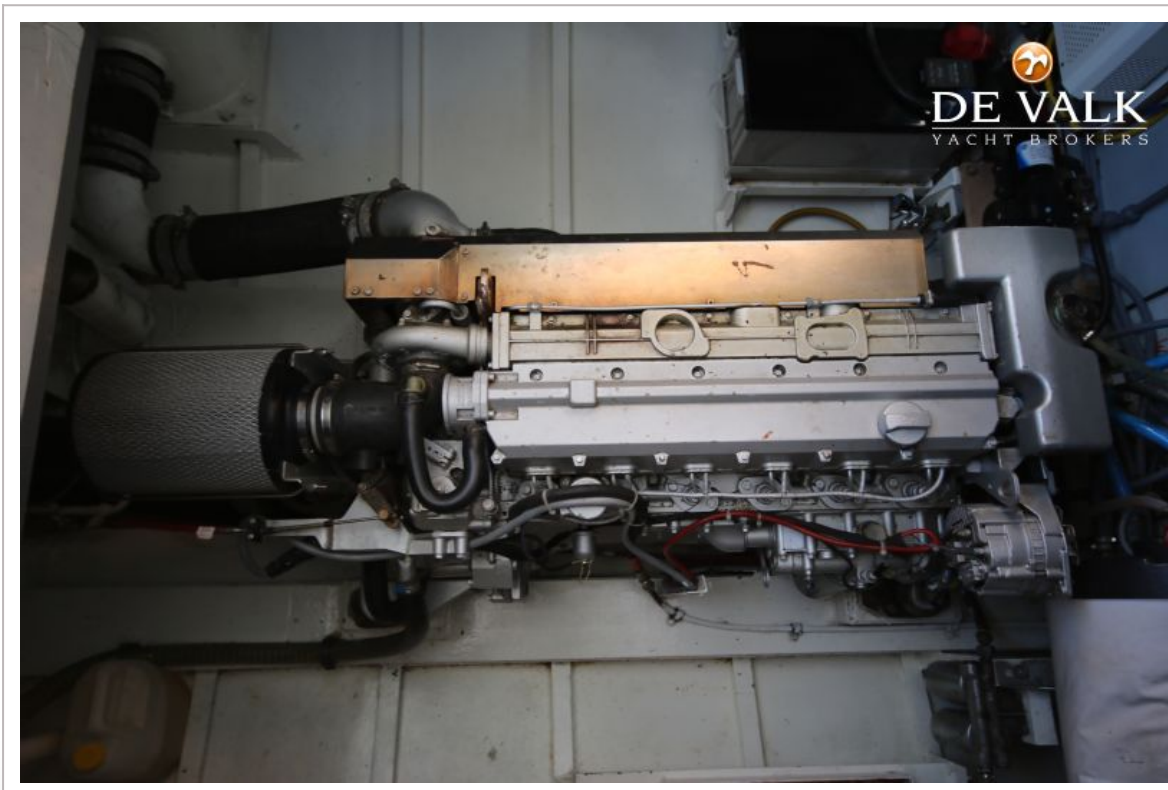
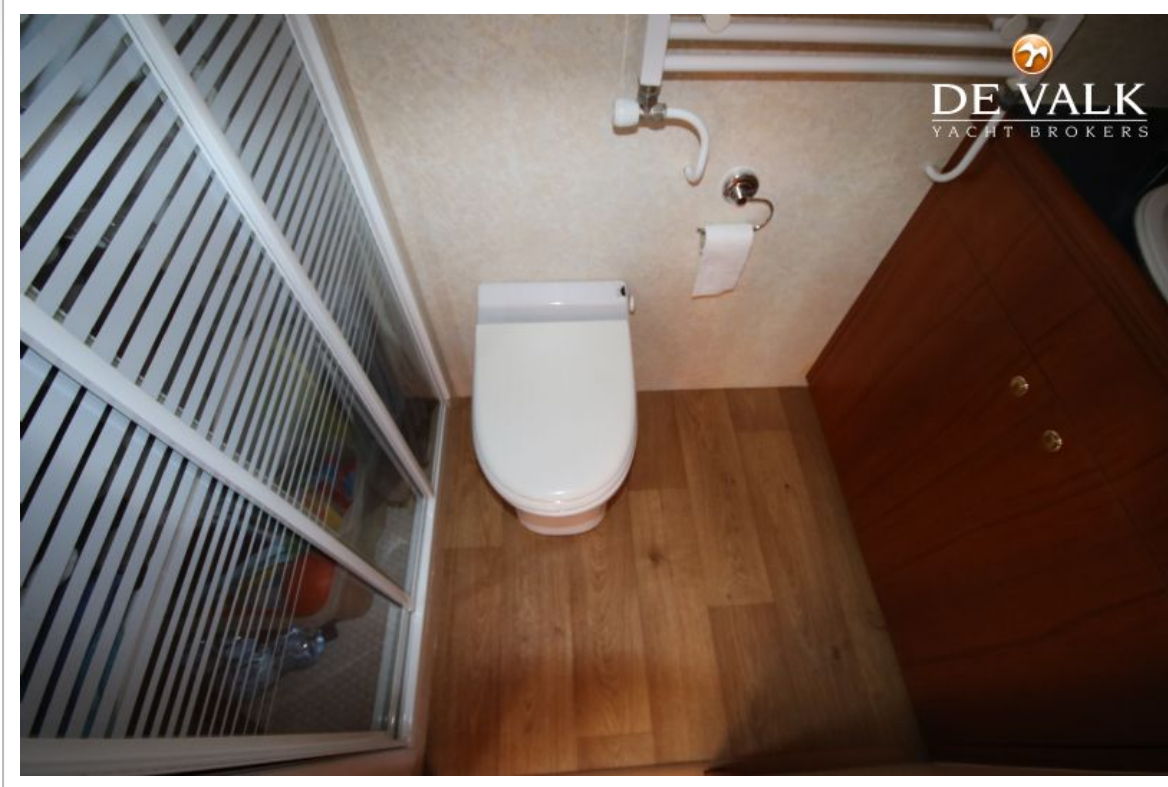
# VALKKRUISER 1400 SPORT



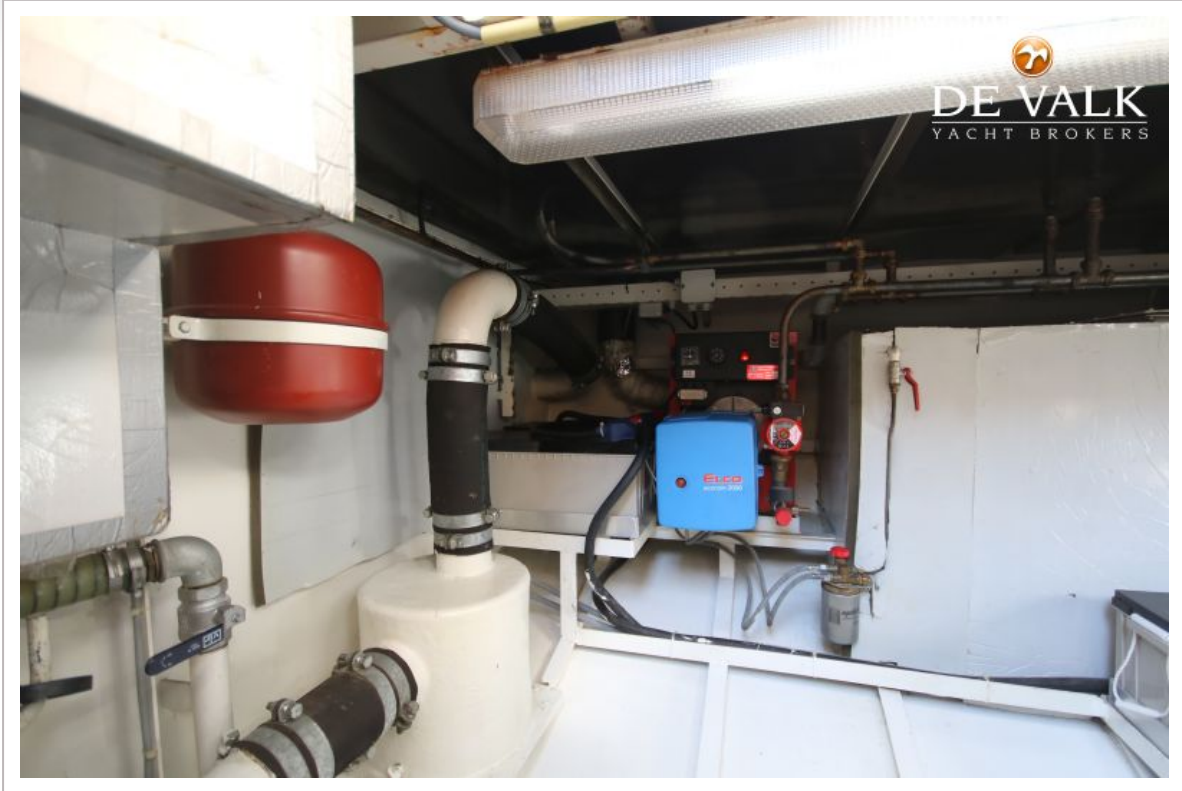
# VALKKRUISER 1400 SPORT



# VALKKRUISER 1400 SPORT



# VALKKRUISER 1400 SPORT





# VALKKRUISER 1400 SPORT

