



VRIPACK KOTTER 1250 OK

VRIPACK KOTTER 1250 OK

BROKER'S COMMENTS

This Vripack 12.50 OK Kotter is built to the highest standards and is CE-B certified. She is built in 2002 and is perfect for two persons to stay on board for a longer time and explore the European inland and coastal waters. The 'Steile Bank " is luxuriously finished with stainless steel details, cherry wood interior and well equipped with a Kabola heating, bow- and stern thrusters, professional Furuno navigation system, powerful Volvo Penta 146 HP diesel engine and double glazing.

Harald Padberg

SPECIFICATIONS

Dimensions	12.50 x 4.00 x 1.20 (m)	Builder	Jachtbouw 2000
Built	2002	Cabins	2
Material	Steel	Berths	4
Engine(s)	1 x Volvo Penta TAMD41H-B869092 diesel	Hp/Kw	146.00 (hp), 107.31 (kw)
Asking price	sold (VAT)	Lying	at sales office

CONTACT

Sales office	De Valk Monnickendam B.V.	Telephone	+31 (0)299 65 63 50
Address	Hoogedijk 6 1145 PM Katwoude NL	E-mail	monnickendam@devalk.nl

DISCLAIMER

These particulars are given in good faith as supplied but cannot be guaranteed.



GENERAL

Model	VRIPACK KOTTER 1250 OK
Type	motor yacht
LOA (m)	12,50
LWL (m)	11,75
Beam (m)	4,00
Draft (m)	1,20
Air draft min (m)	3,35
Headroom (m)	2,10
Year built	2002
Builder	Jachtbouw 2000
Country	The Netherlands
Designer	Vripack
Displacement (t)	13
CE norm	B
Hull material	steel
Hull colour	blue
Hull thickness (mm)	5 mm.
Hull shape	multi hard chine
Superstructure material	steel
Superstructure (mm)	4 mm.
Deck plate thickness (mm)	4 mm.
Rubbing strake	stainless steel
Deck material	steel
Deck finish	non-skid paint
Superstructure deck finish	paint
Cockpit deck finish	teak
Antifouling (year)	2014
Window frame	aluminium
Window material	double glazing
Deckhatch	yes



Portholes	aluminium Mosquito screens
Insulation	foam
Radar arch	non collapsible
Fuel tank (litre)	steel 2x 400 L.
Level indicator (fuel tank)	yes
Freshwater tank (litre)	stainless steel 3x 300 L.
Level indicator (freshwater)	yes
Blackwater tank (litre)	steel 1x 400 L.
Level indicator (blackwater)	yes
Blackwater tank extraction	deck extraction + uw line
Wheel steering	hydraulic
Inside helm position	yes
Outside helm position	yes
Emergency tiller	yes
More info on paintwork	In 2014 completely repainted. De IJssel doublecoat 2 component paint.

ACCOMMODATION

Cabins	2
Berths	4
Interior	cherry
Floor	carpet
Pilot house/deck saloon	yes
Saloon	yes
Headroom saloon (m)	2,10 M.
Heating	central heating Kabola B12
Opening door to cockpit	yes
Galley	yes
Countertop	corian
Sink	stainless steel
Cooker	calor gas 4-burner



Oven	yes
Fridge	with freezer compartment
Hot water system	220V/engine/heating
Water pressure system	electrical
Owners cabin	French bed
Bed length (m)	2,05 M.
Wardrobe	hanging and shelves
Bathroom	separate
Toilet	separate
Toilet system	electric
Wash basin	at the toilet
Shower	separate
Guest cabin 1	double bed
Bed length (m)	1,90 M.
Wardrobe	hanging and shelves
Extra info	Ceiling Alcantara upholstery, cabin ceiling halogen spotlights.

MACHINERY

No of engines	1
Make	Volvo Penta
Type	TAMD41H-B869092
HP	146,00
kW	107,31
Fuel	diesel
Year installed	2002
Maximum speed (kn)	8-9
Cruising speed (kn)	6-7
Consumption (l/hr)	8
Engine hours	2750
Engine cooling system	freshwater heat exchanger
Drive	shaft



Engine controls	bowden cable
Gearbox	hydraulic
Bowthruster	electric Side Power - remote
Sternthruster	electric Side Power - remote
Propeller type	fixed
Propeller blades	4
Propeller shaft material	steel
Shaft lubrication	water Powerflex
Electric bilge pump	3x
Start battery	1 x 12V-120 Ah - new in Feb. 2018
Service battery	4 x 12V-230 Ah - new in Feb. 2018
Bowthruster battery	1 x 12V-105 Ah - new in Feb. 2018
Sternthruster battery	1 x 12V-105 Ah - new in Feb. 2018
Battery charger	Mastervolt 50Ah
Inverter	Mastervolt Sinus 1500W continue
Shorepower	with cable
Insulation transformer	yes
Extra info	Engine bay hatch hydraulic operated
Extra info	Engine serviced Feb. 2018

NAVIGATION

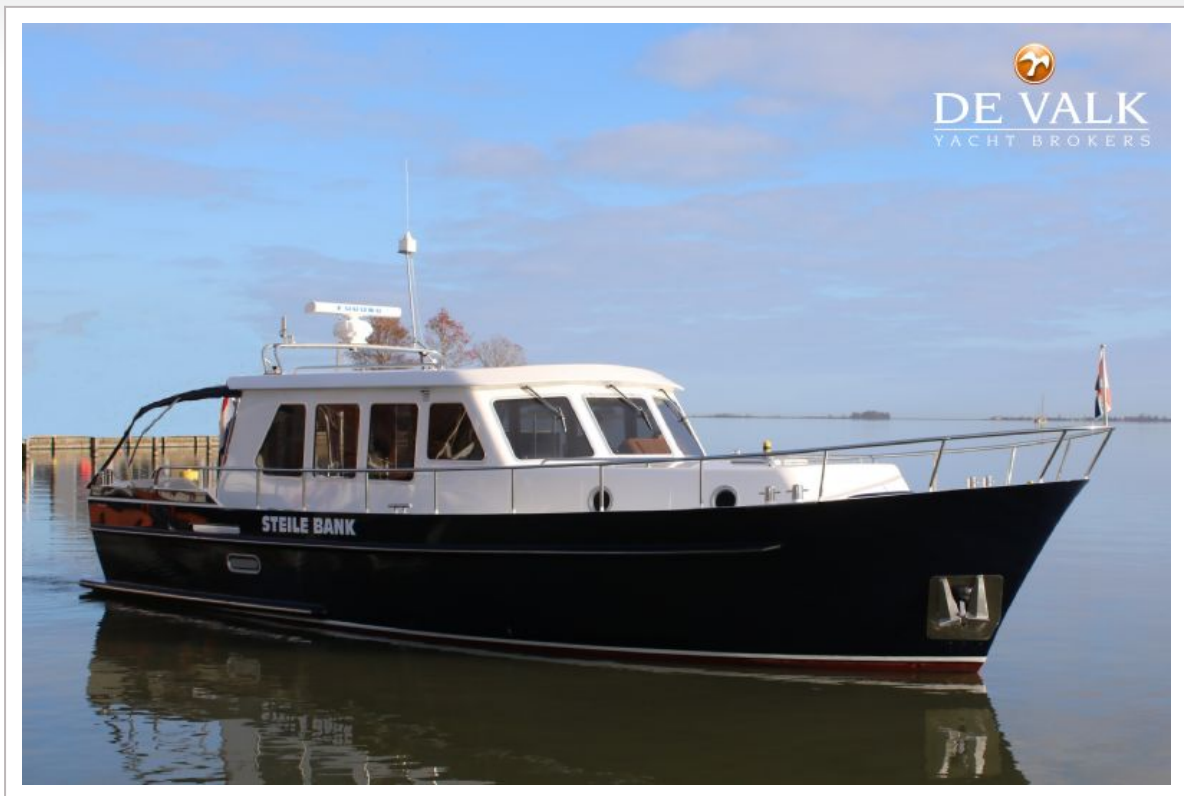
Electric compass	on autopilot
Depth sounder	yes
Log	yes
Repeater	yes
VHF	dual control
Autopilot	Furuno Nav Pilot 500 with remote connection
Radar	EPU 015
Radar/GPS/plotter	yes
Navtex	yes
Electronic chart(s)	update 2016 Navionics



EQUIPMENT

Sun awning	yes
Winter cover	yes
Cockpit cushions	yes
Cockpit table	yes
Bathing platform	yes
Boarding ladder	stainless steel
Transom door	yes
Gangway	yes
Deck shower	yes
Anchor	yes
Anchor chain	30 M.
Windlass	electrical 2015 new engine
Deck wash	yes
Sea railing	tube Stainless steel
Grab rail (superstructure)	stainless steel
Railing side opening gates	2x
Lifebuoy	yes
Wiper	3x
Horn	electric
Fenders	5x
Mooring lines	6x
TV	yes
TV receiver	yes
Radio-cd player	yes
Speakers in salon	yes
Clock - barometer	Schatz
Fire extinguisher	2x
Extinguisher in engine room	yes
Auto extinguisher system	yes







VRIPACK KOTTER 1250 OK



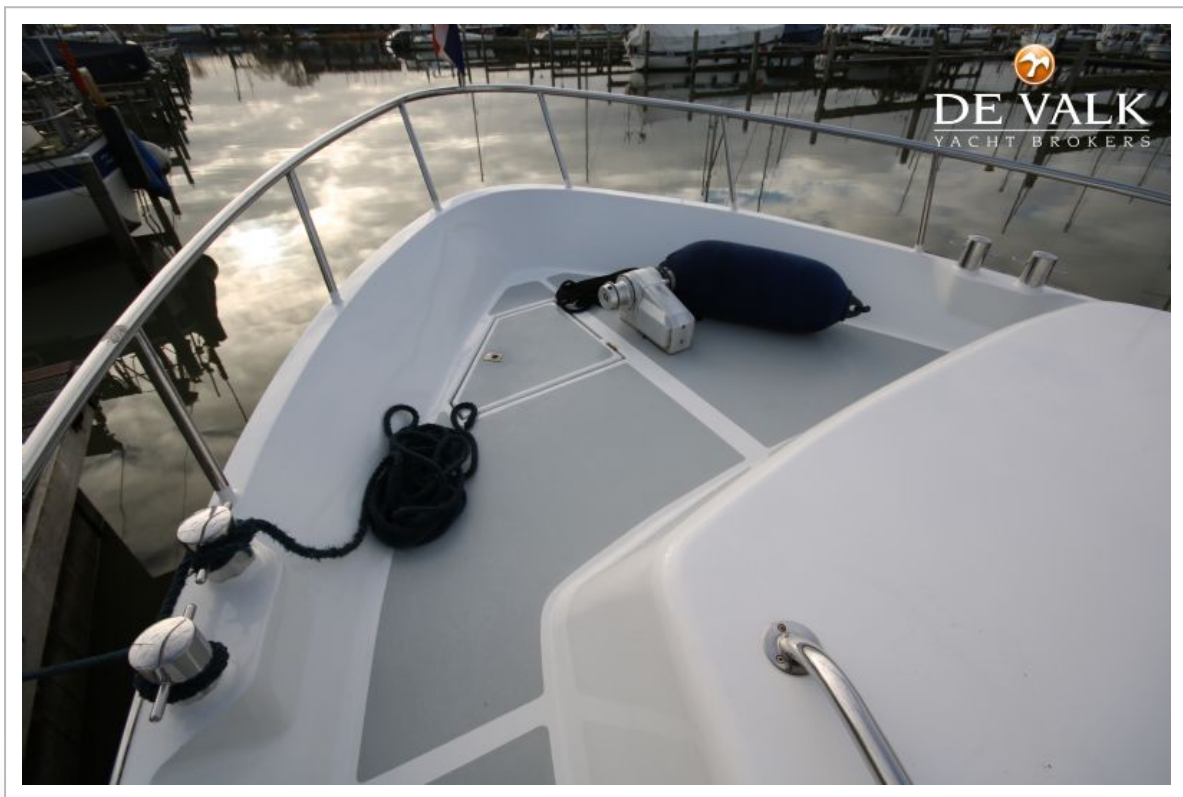
VRIPACK KOTTER 1250 OK



VRIPACK KOTTER 1250 OK



VRIPACK KOTTER 1250 OK



VRIPACK KOTTER 1250 OK



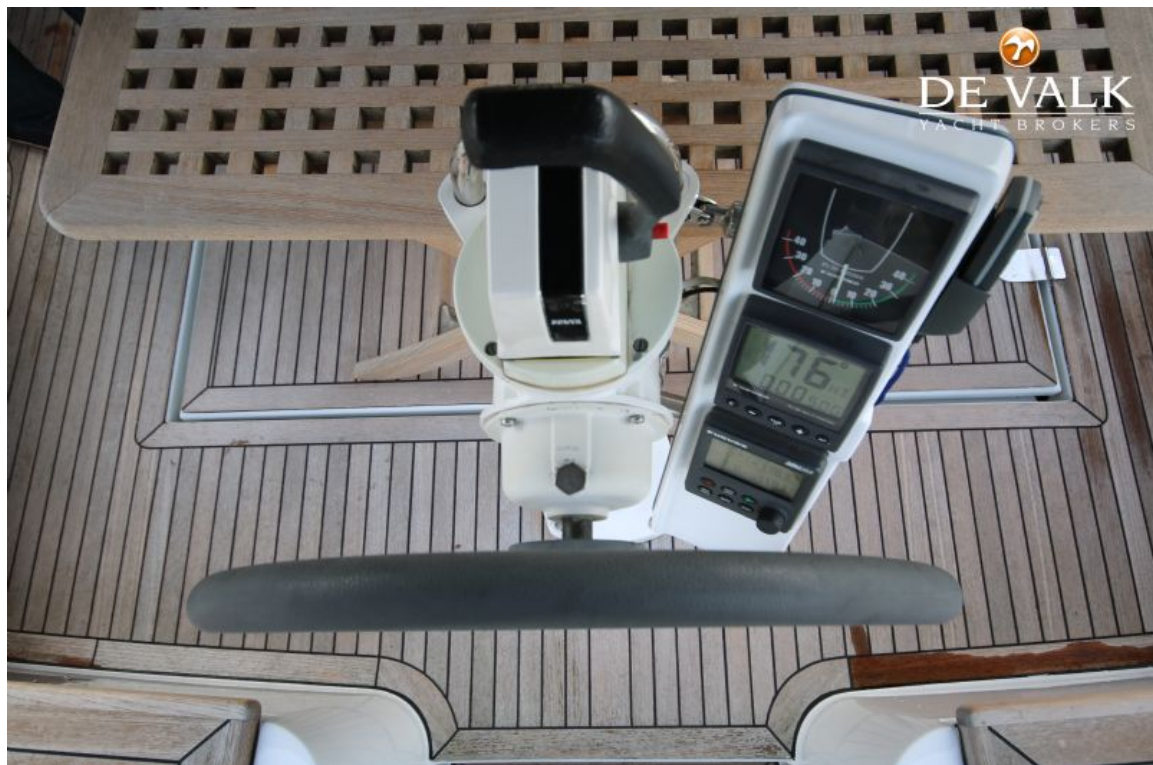
VRIPACK KOTTER 1250 OK



VRIPACK KOTTER 1250 OK



VRIPACK KOTTER 1250 OK



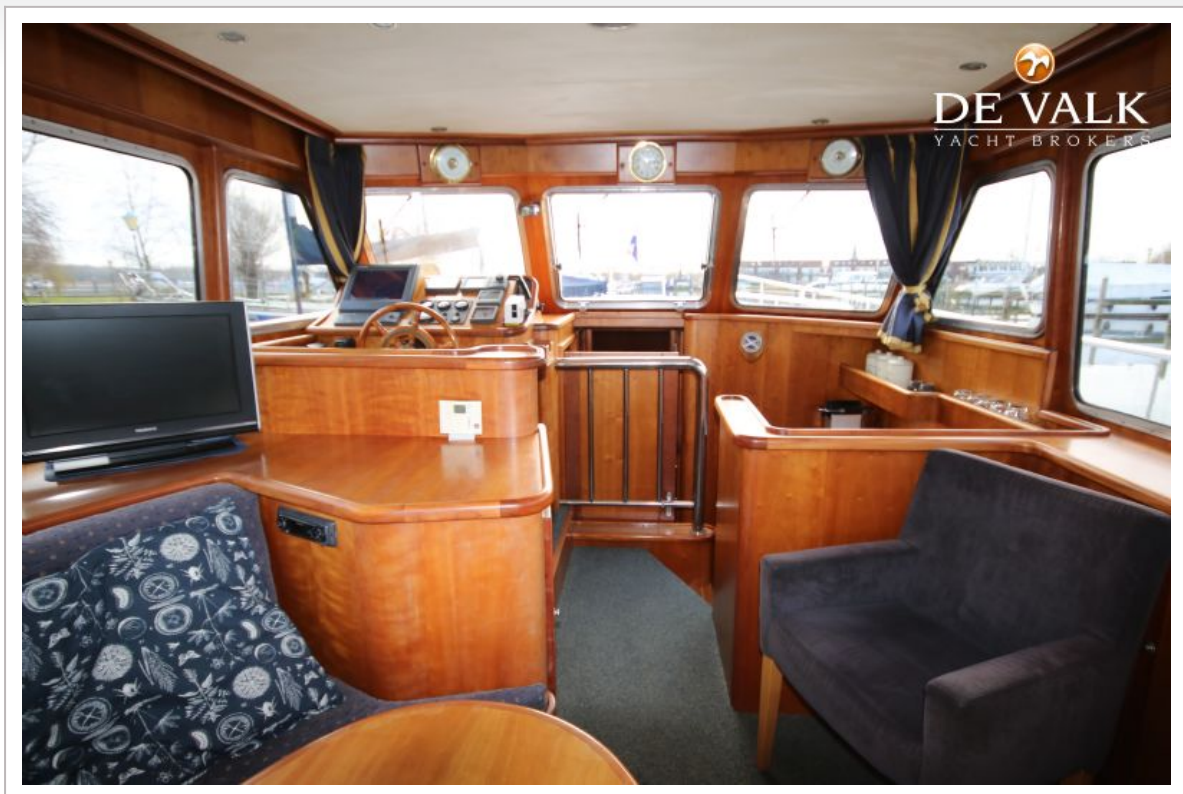
VRIPACK KOTTER 1250 OK



VRIPACK KOTTER 1250 OK



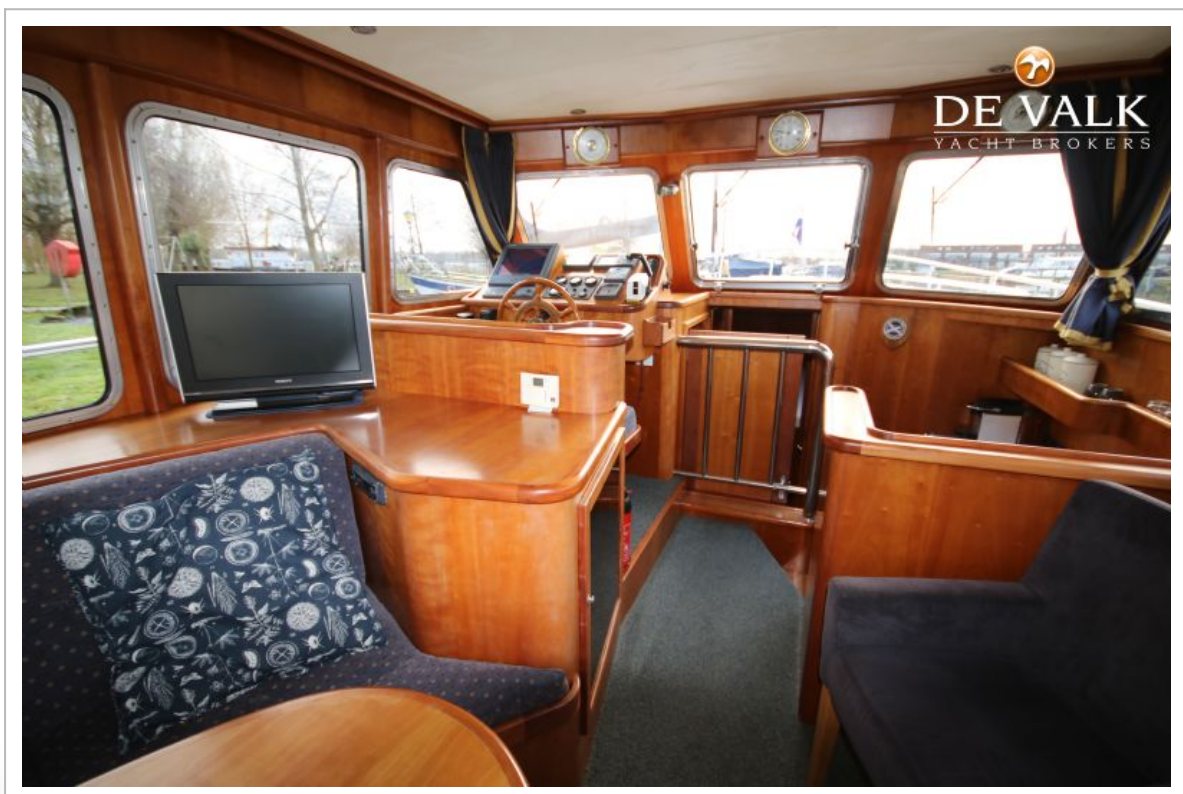
VRIPACK KOTTER 1250 OK



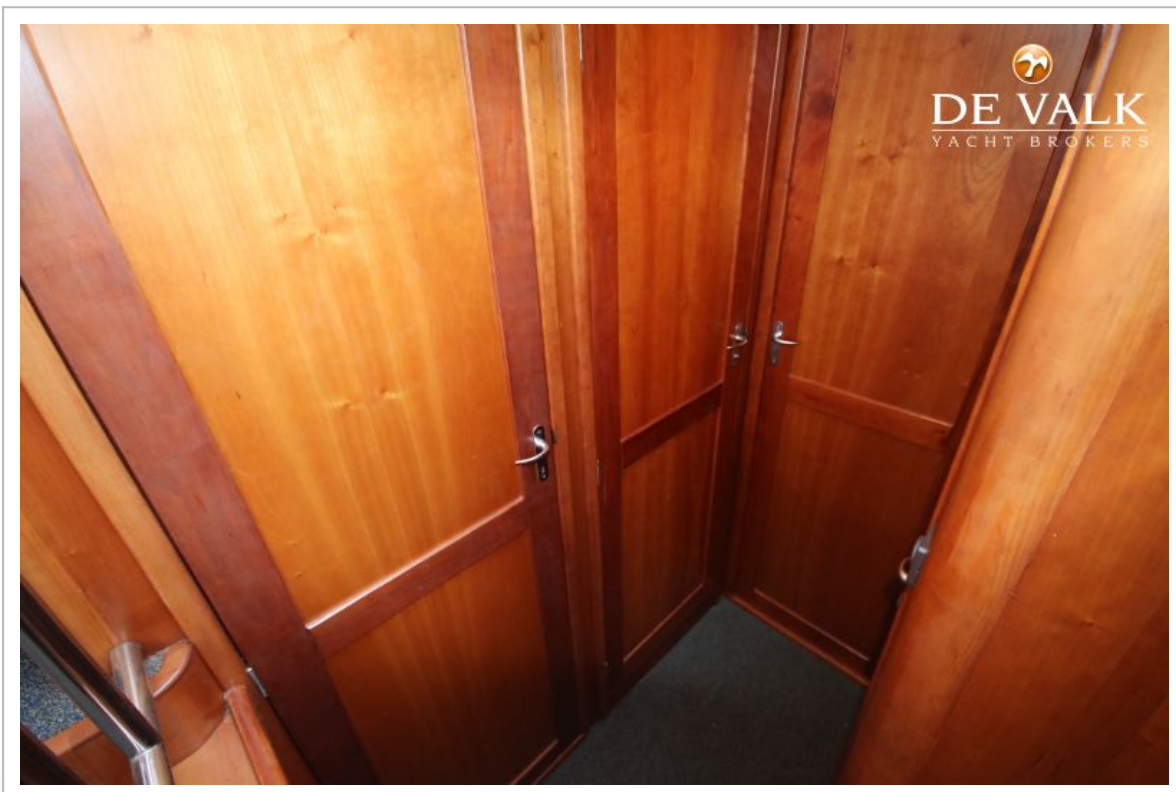
VRIPACK KOTTER 1250 OK

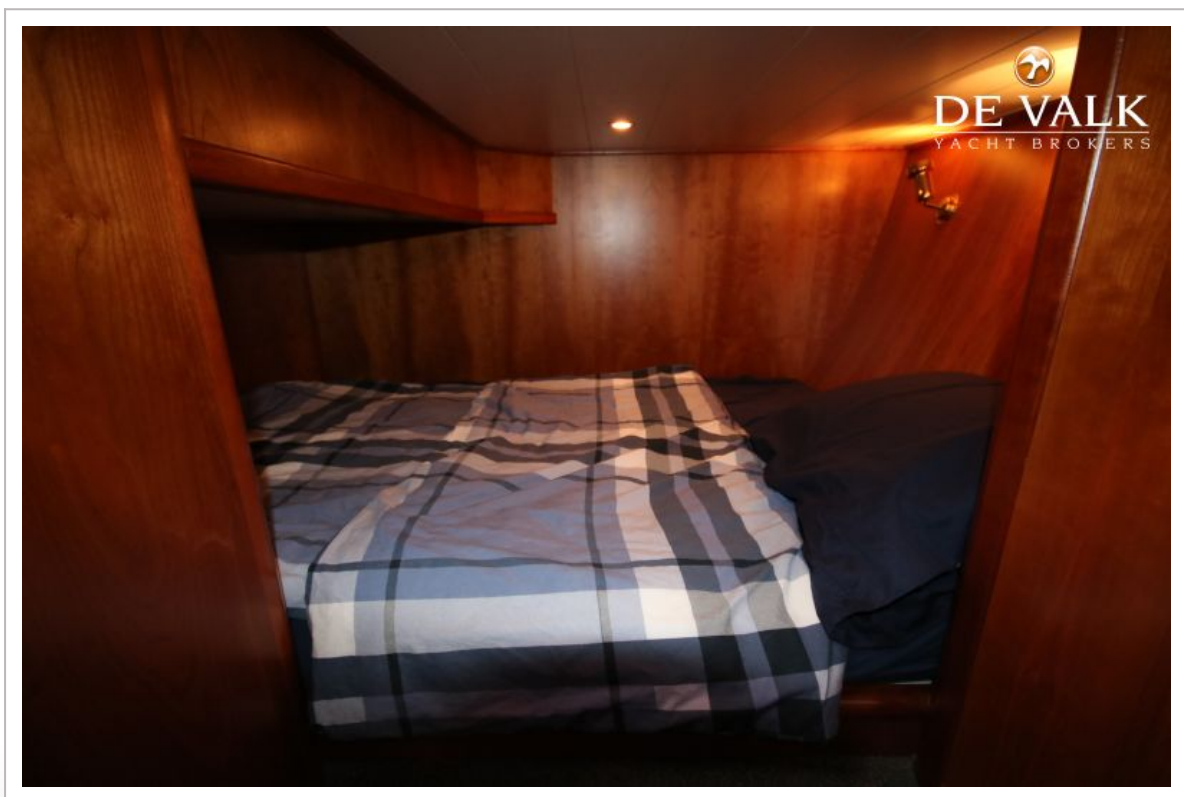


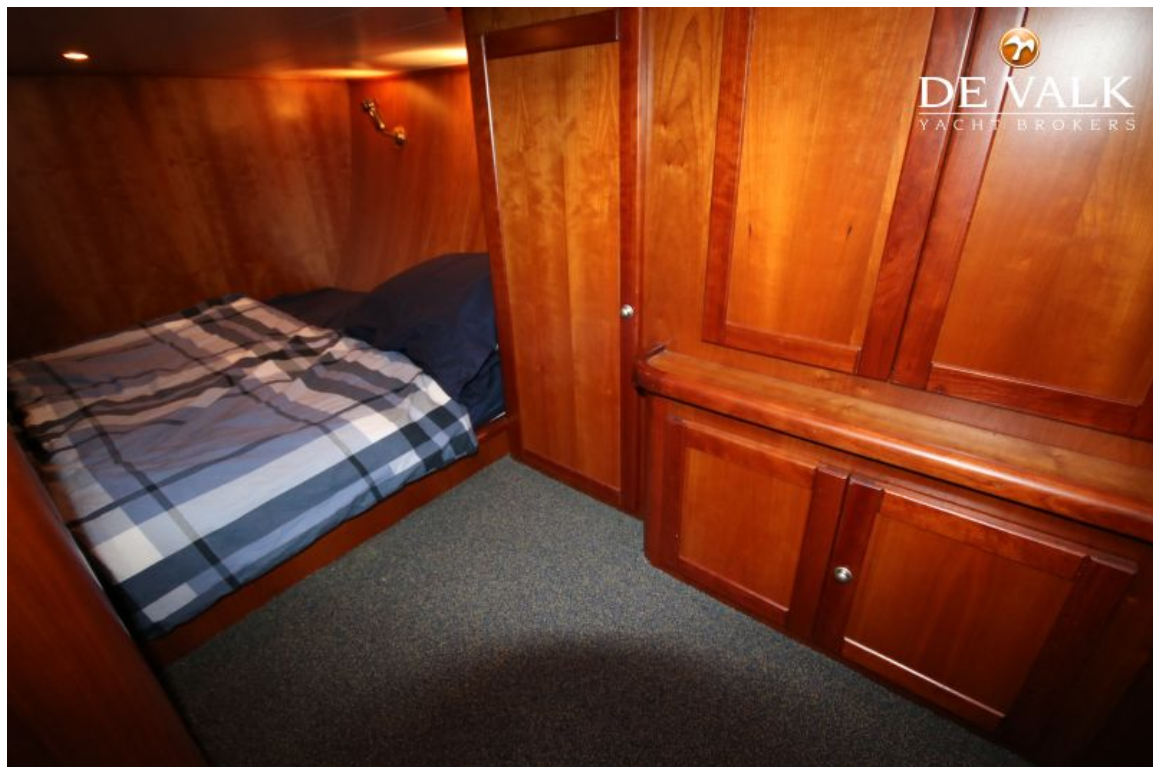
VRIPACK KOTTER 1250 OK

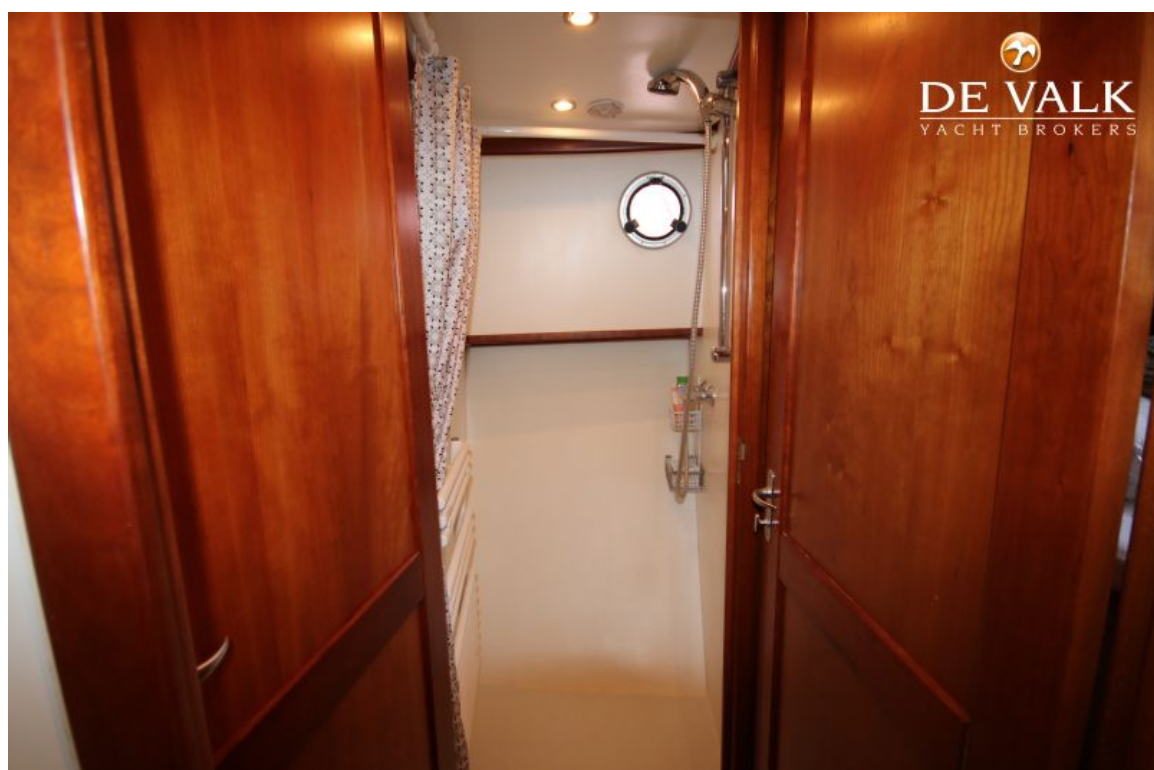


VRIPACK KOTTER 1250 OK

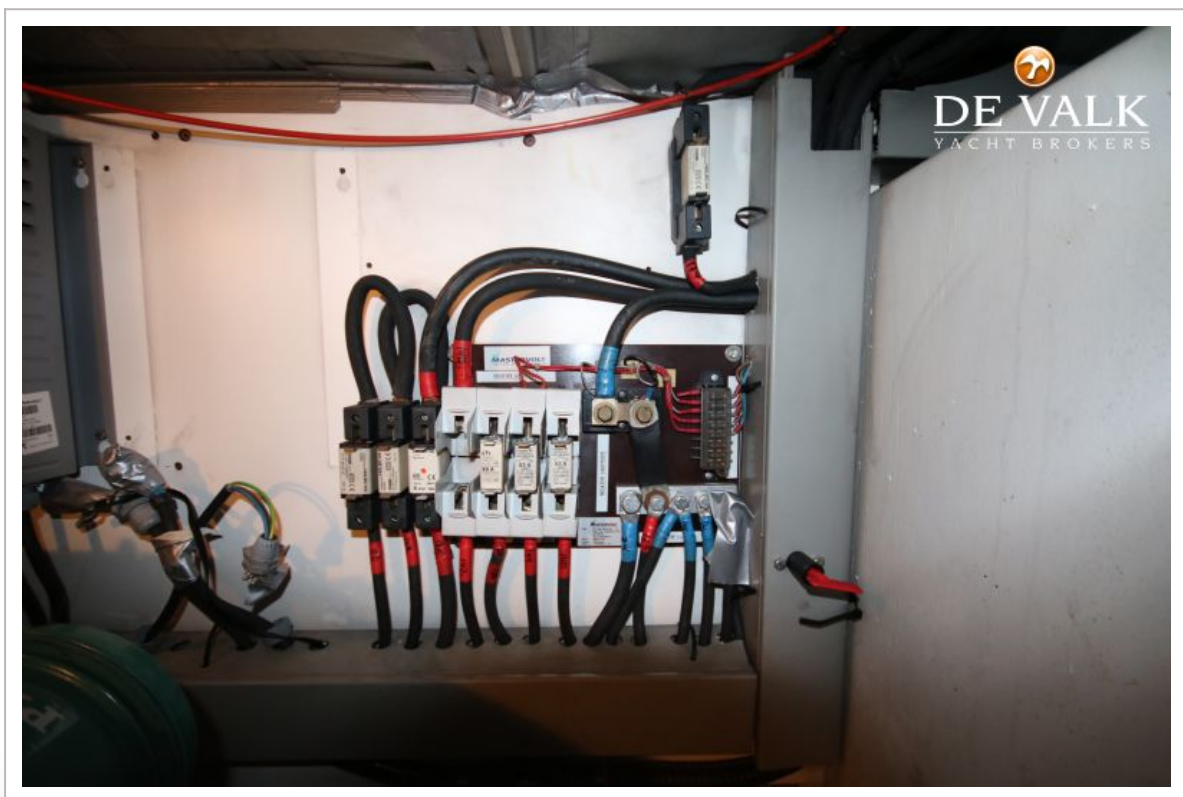
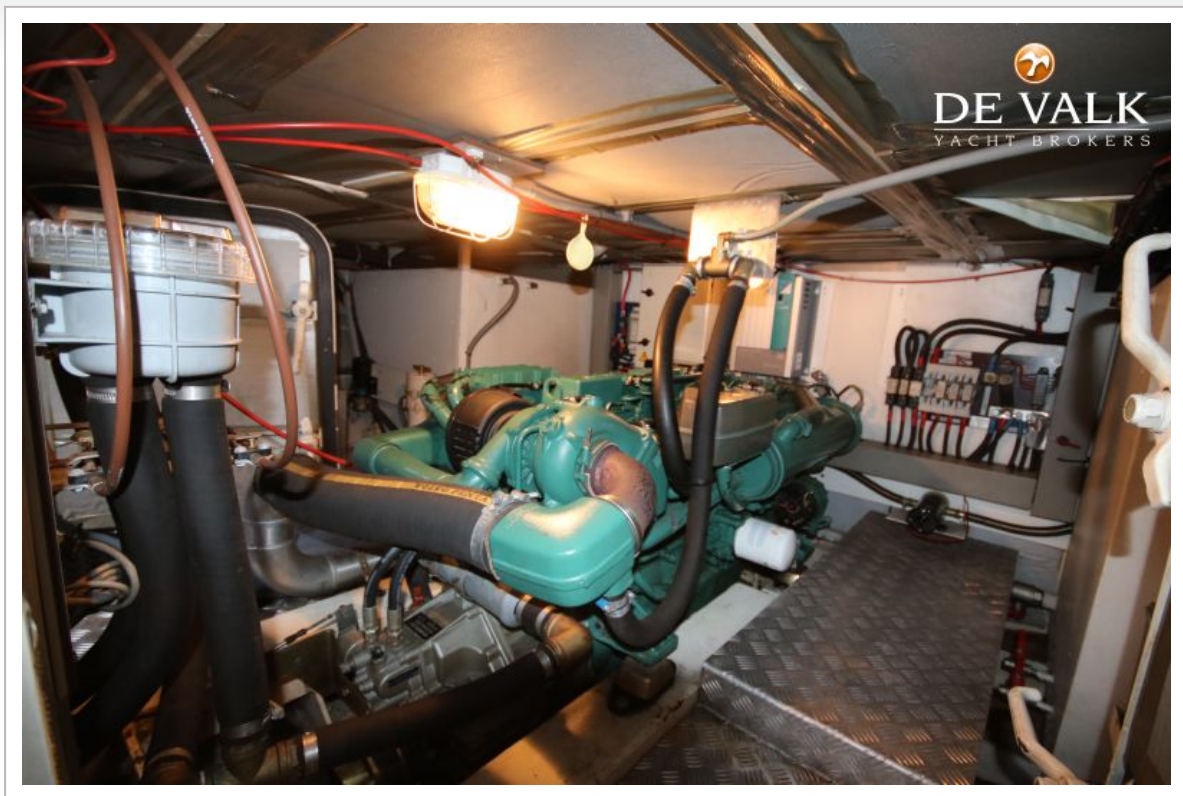








VRIPACK KOTTER 1250 OK



VRIPACK KOTTER 1250 OK

