



DE VALK
YACHT BROKERS



REINKE 15M



DE VALK
YACHT BROKERS

BROKERAGE | CHARTER | BERTHS | FINANCE | INSURANCE | YACHT MANAGEMENT

BROKER'S COMMENTS

This Reinke 15M is a very recommendable bluewater cruiser. She is sturdy, well built and everything is in very good shape. Her concept and idea is wellthought for autonomous sailing in all situations. Capacities and energy capacities are made for living aboard. Please ask for the detailed equipment list, which gives you the full picture. "Agens" is ready to go and immediately available. If you consider to cruise the world, have a closer look.

Jürgen Jacobs

SPECIFICATIONS

Dimensions	15.97 x 4.47 x 1.63 (m)	Builder	
Built	2008	Cabins	3
Material	Aluminium	Berths	
Engine(s)	2 x Beta Marine BV2203 diesel	Hp/Kw	2 x 50.00 (hp), 36.75 (kw)
Asking price	sold (VAT)	Lying	contact sales office

CONTACT

Sales office	De Valk Hamburg	Telephone	+49 40 46 000 999
Address	Domstraße 11 20095 Hamburg DE	E-mail	hamburg@devalk.nl

DISCLAIMER

These particulars are given in good faith as supplied but cannot be guaranteed.



GENERAL

Model	REINKE 15M
Type	sailing yacht
LOA (m)	15,97
Beam (m)	4,47
Draft (m)	1,63
Year built	2008
Launched	2011
Country	Germany
Designer	Reinke
Displacement (t)	20
Ballast (tonnes)	7,1
Gross tonnage	24
Net tonnage	20
CE norm	A
Hull material	aluminium
Hull colour	blue
Bilge keels	yes
Superstructure material	aluminium
Rubbing strake	
Deck material	teak
Cockpit deck finish	teak
Antifouling (year)	2019
Dorades	yes
Window frame	aluminium
Window material	tempered glass
Insulation	foam
Fuel tank (litre)	aluminium 600 L
Fuel tank 2 (litre)	aluminium 600 L
Level indicator (fuel tank)	yes
Freshwater tank (litre)	aluminium 1410 L in 4 tanks



Level indicator (freshwater)	yes
Blackwater tank (litre)	polyethylene 780 L in 2 tanks
Wheel steering	
Inside helm position	yes
Emergency tiller	yes

ACCOMMODATION

Cabins	3
Interior	mahogany
Floor	teak and holly
Deck saloon	yes
Saloon	yes
Headroom saloon (m)	197cm
Heating	central hot water Webasto
Chart table	yes
Dinette to convert into berth	yes
Galley	yes
Countertop	Corian
Sink	
Cooker	
Oven	yes
Microwave/oven combi	yes
Fridge	yes
Hot water system	
Water pressure system	
Dishwasher	Neff
Owners cabin	double bed
Bed length (m)	201cm x 161cm
Bathroom	separate
Toilet	separate
Toilet system	electric



Shower	
Bath tub	
Guest cabin 1	
Bed length (m)	188cm x 140cm
Bathroom	separate
Toilet	shared
Toilet system	electric
Shower	shared

MACHINERY

No of engines	2
Make	Beta Marine
Type	BV2203
HP	50
kW	36,75
Fuel	diesel
Engine hours	1910
Engine cooling system	freshwater heat exchanger
Drive	shaft
Engine controls	bowden cable
Bowthruster	Maxpower
Sternthruster	Maxpower
Propeller type	reversible SPW
Propeller blades	3
Propeller shaft material	stainless steel
Shaft lubrication	grease
Manual bilge pump	yes
Electric bilge pump	yes
Electrical installation	yes
Generator	wet exhaust Fischer Panda AGT 4kW
Start battery	yes



Service battery	6 x AGM, 24V, 120Ah each
Battery monitor	yes
Battery charger	2 x Victron 80A + 60A
Inverter	yes
Wind generator	yes
Solar panel	yes
Shorepower	with cable
Watermaker	25-30 l/h

NAVIGATION

Compass	yes
Depth sounder	yes
Depth sounder/log	Raymarine ST60+ Tridata
Log	yes
Windset	Raymarine ST60
VHF	Raymarine
Autopilot	Raymarine ST6002 Smart Pilot with Remote Control
Radar	yes
Radar/GPS/plotter	Raymarine C90w
Personal computer	With radar and overlay function, connected to plotter
PC connection	yes
AIS transceiver	AIS 500
EPIRB	yes
Navigation lights	yes
Searchlight	yes

EQUIPMENT

Fixed windscreen	yes
Sprayhood	yes
Bimini	yes
Bathing platform	yes



Boarding ladder	aluminum
Gangway	Foldable
Anchor	Delta 25kg
Anchor chain	80m Cromox VA ø10mm
Anchor 2	Britany 25kg
Anchor chain	100m Cromox VA ø8mm
Other ground tackle	Stern anchor, Britany 20kg, 60m rope
Windlass	2 bow anchor windlasses
Capstan	yes
Windlass aft	1 stern windlass
Dinghy	Rigid bottom inflatable
Outboard	Tohatsu 6hp, 4 stroke
Davits	
Sea railing	aluminum
Railing side opening gates	yes
Pushpit	yes
Pulpit	yes
Life raft	container AWN Offshore
Life raft (pers)	container 6
Last life raft survey	02 / 2022
Lifebuoy	yes
Safety lines on deck	yes
Horn	
Fenders	yes
Mooring lines	yes
Spare parts	yes
Tools	yes
TV	With antenna
Radio-cd player	Radio / CD / mp3
Clock - barometer	yes
Fire extinguisher	2 x foam, 1 x CO2, 1 x in cockpit
Extra info	MOB transmitter



RIGGING

Rigging	cutter
Standing rigging	wire
Brand mast	Sparcraft Sparcraft
Material mast	aluminium
Spreaders	yes
Mainsail	yes
Mainsail cover	yes
Fully battened mainsail	Moritz Sails, 52sqm, 5 battens, 4 reefs, Cross cut, 450g
Jib	Selftacking working jib, 44sqm, UV protection, 450g cross-cut
Genoa	Furling genoa, 73m2, foam-luff, 360g
Genoa furler	2 x Facnor
Self tacking jib installation	yes
Reefing System	slabreefing
Backstay adjuster	
Genoa sheetwinches	Antal 60 ST
Halyard winches	Antal 44 STE (electric) & 40 ST
Spinnaker winch	Antal 44 ST
Spi-pole	aluminium
Extra info	Lazy Jacks / Lazy Bag



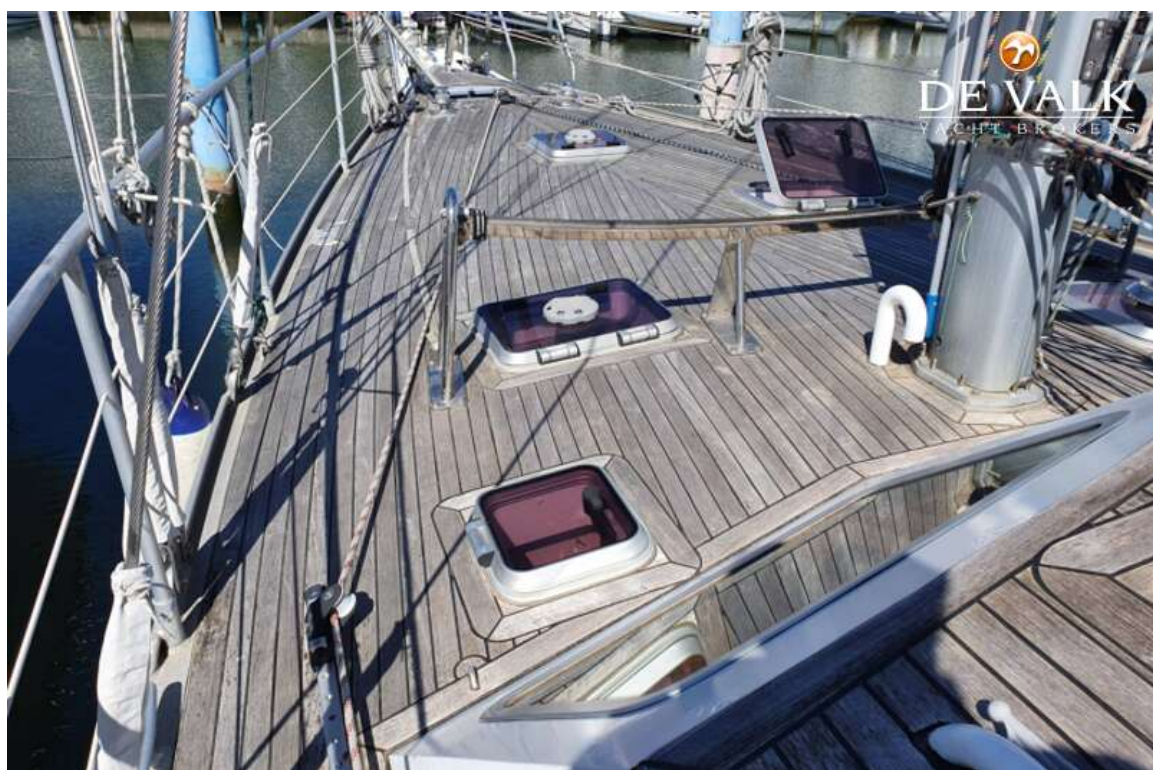
REINKE 15M



REINKE 15M



REINKE 15M



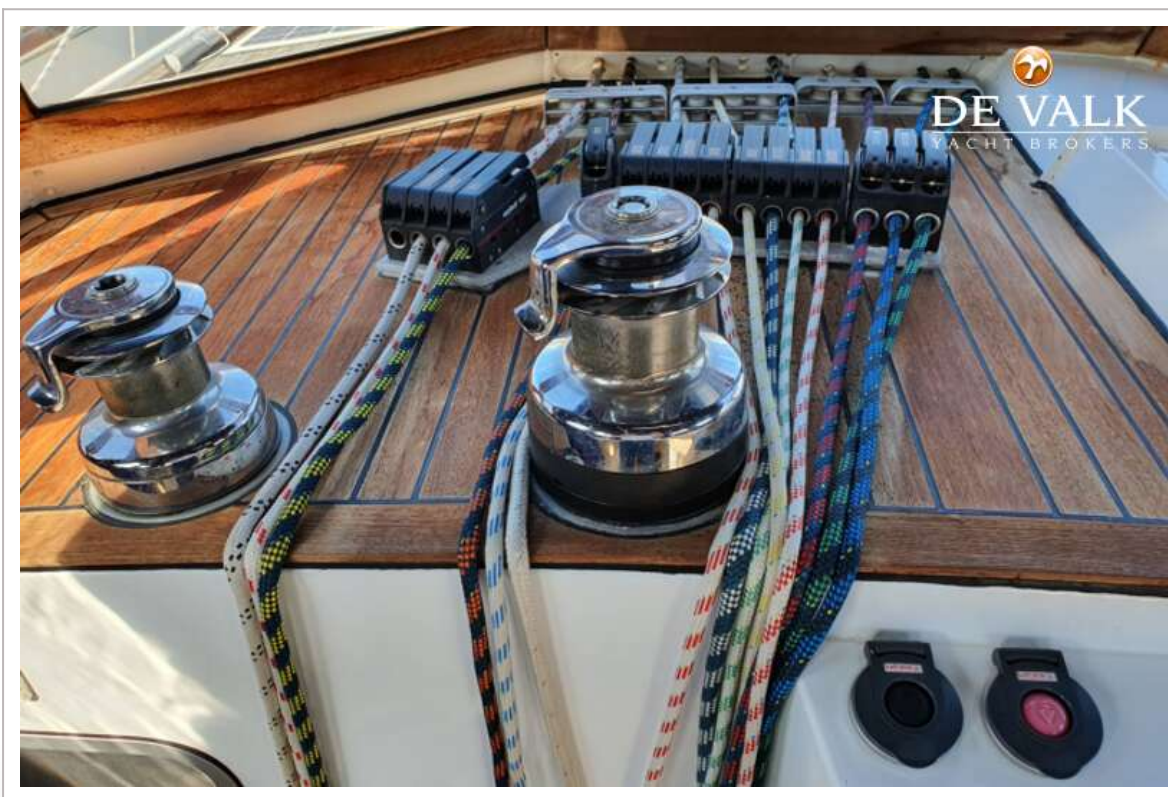
REINKE 15M



REINKE 15M



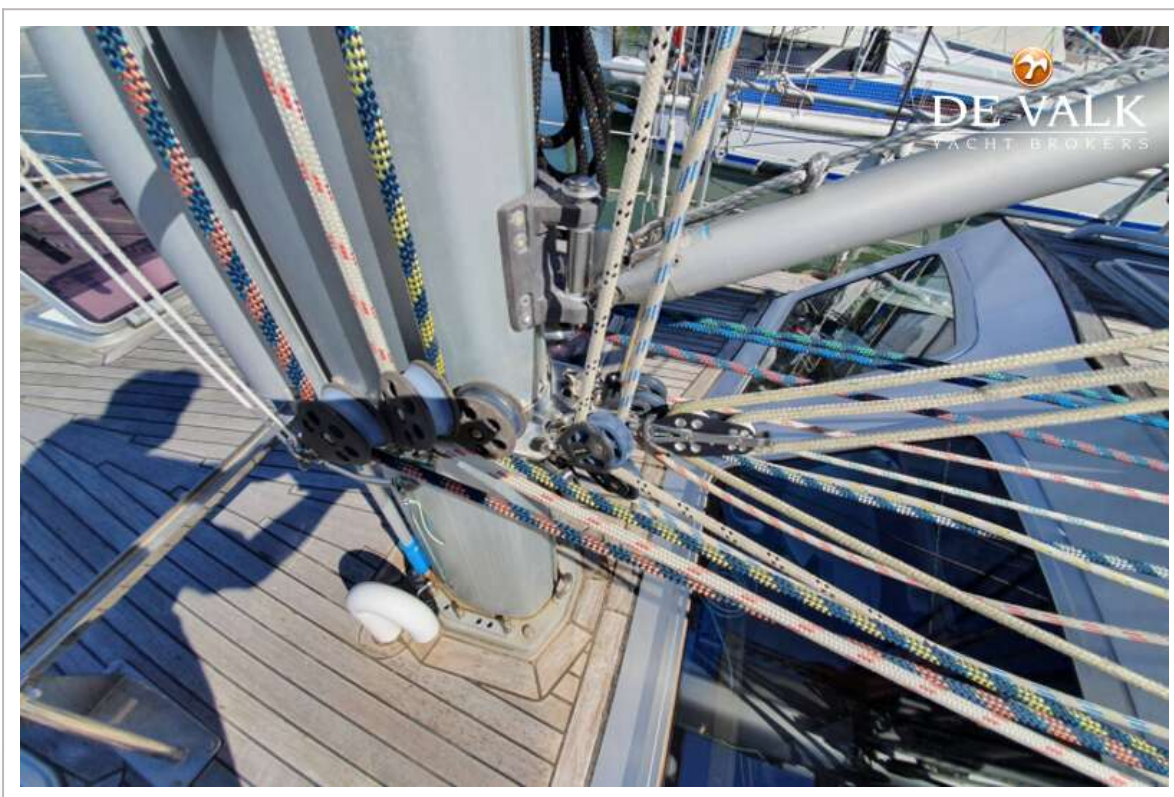
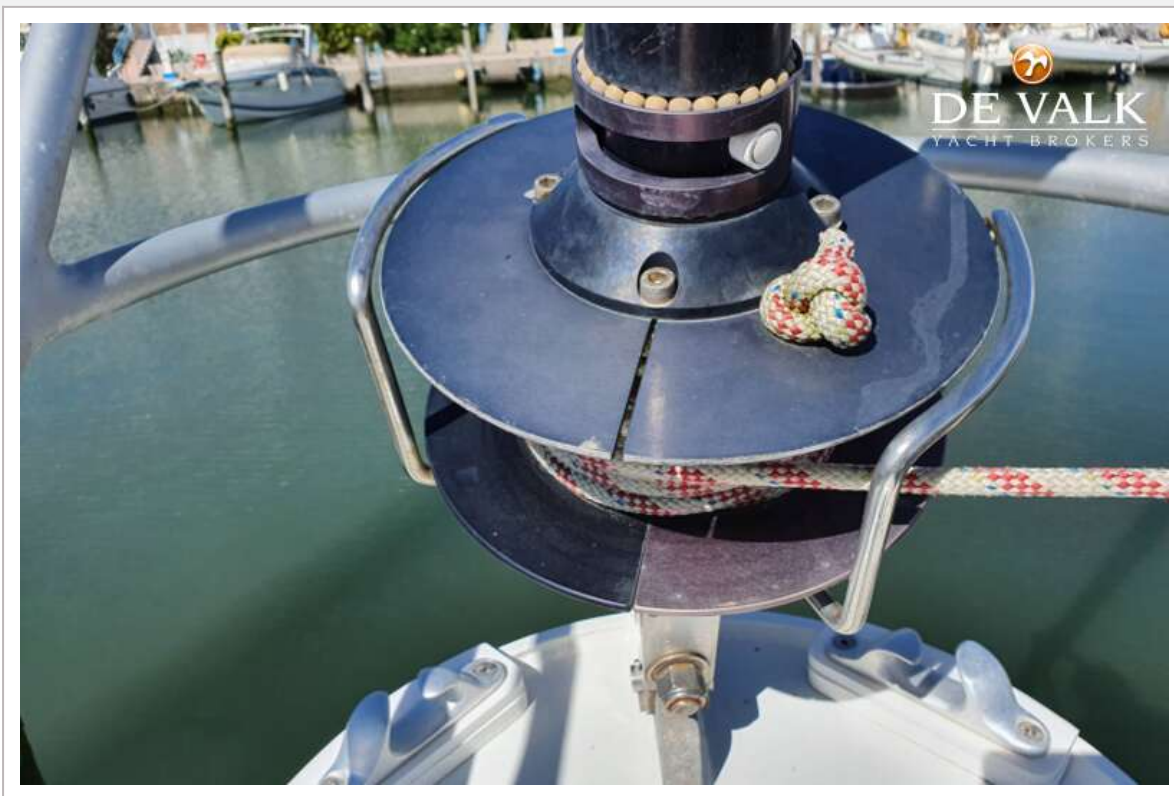
REINKE 15M



REINKE 15M



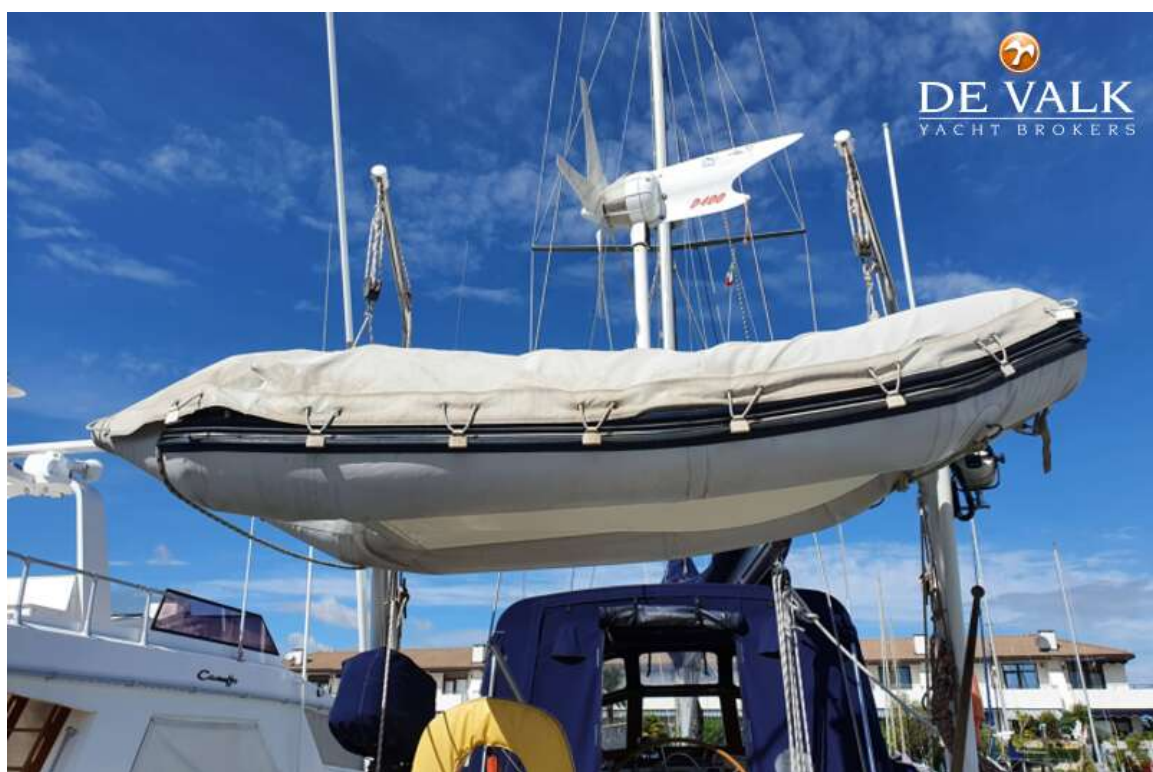
REINKE 15M



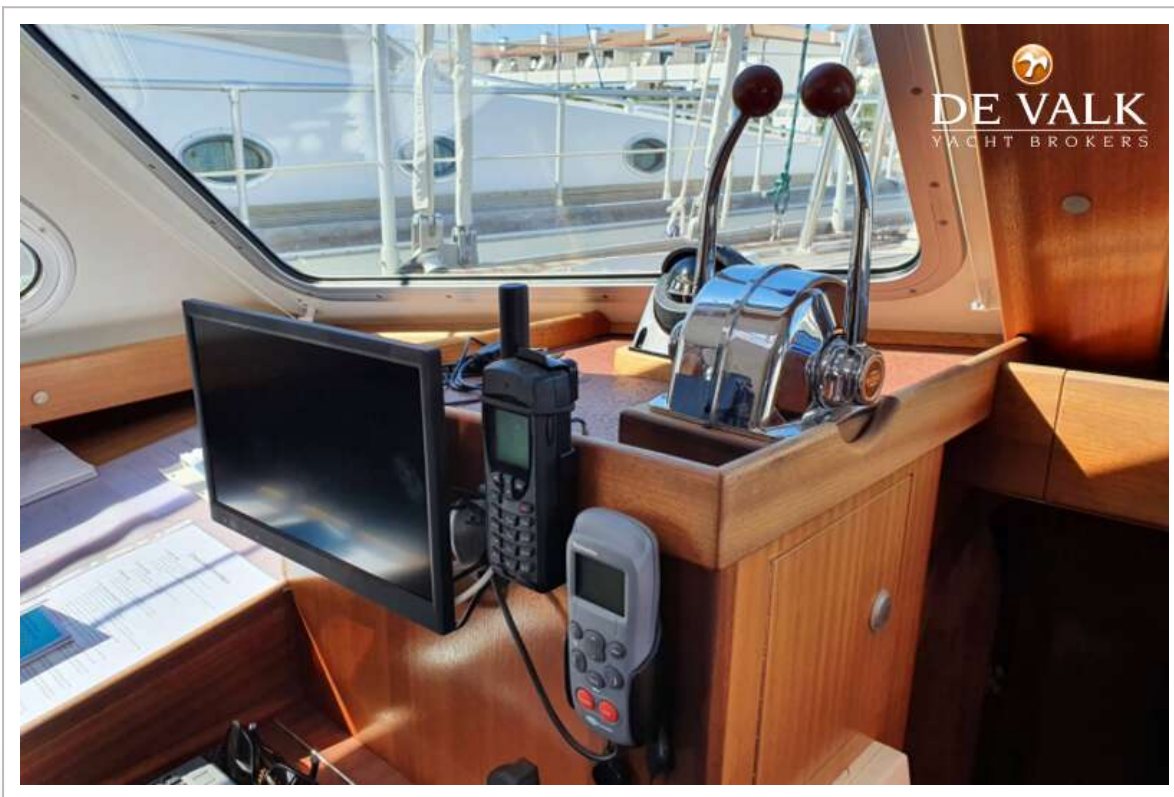
REINKE 15M



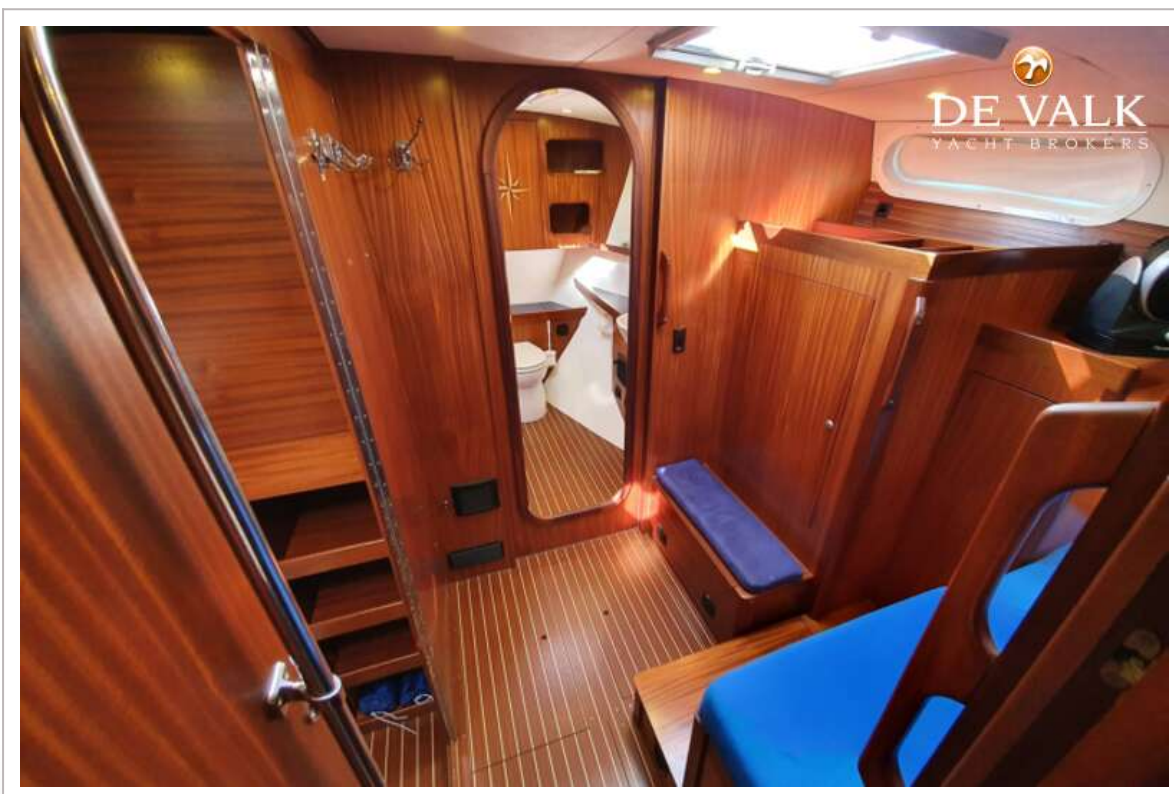
REINKE 15M



REINKE 15M



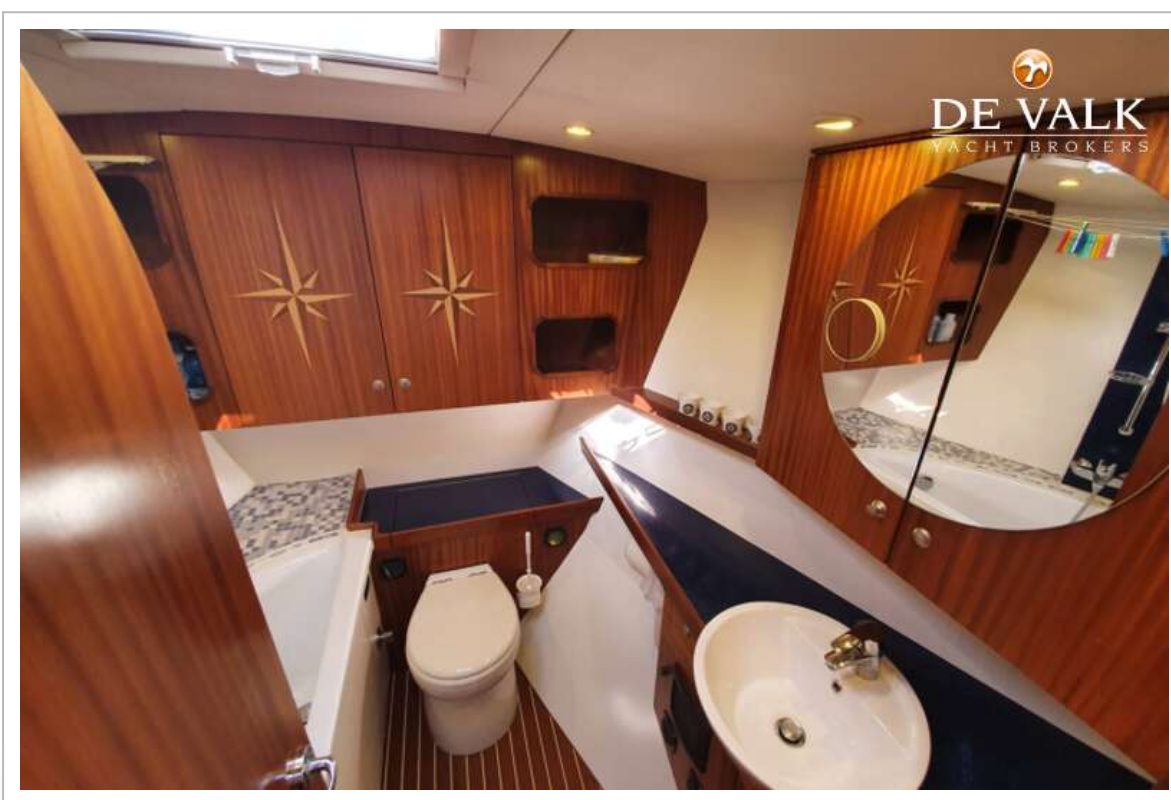
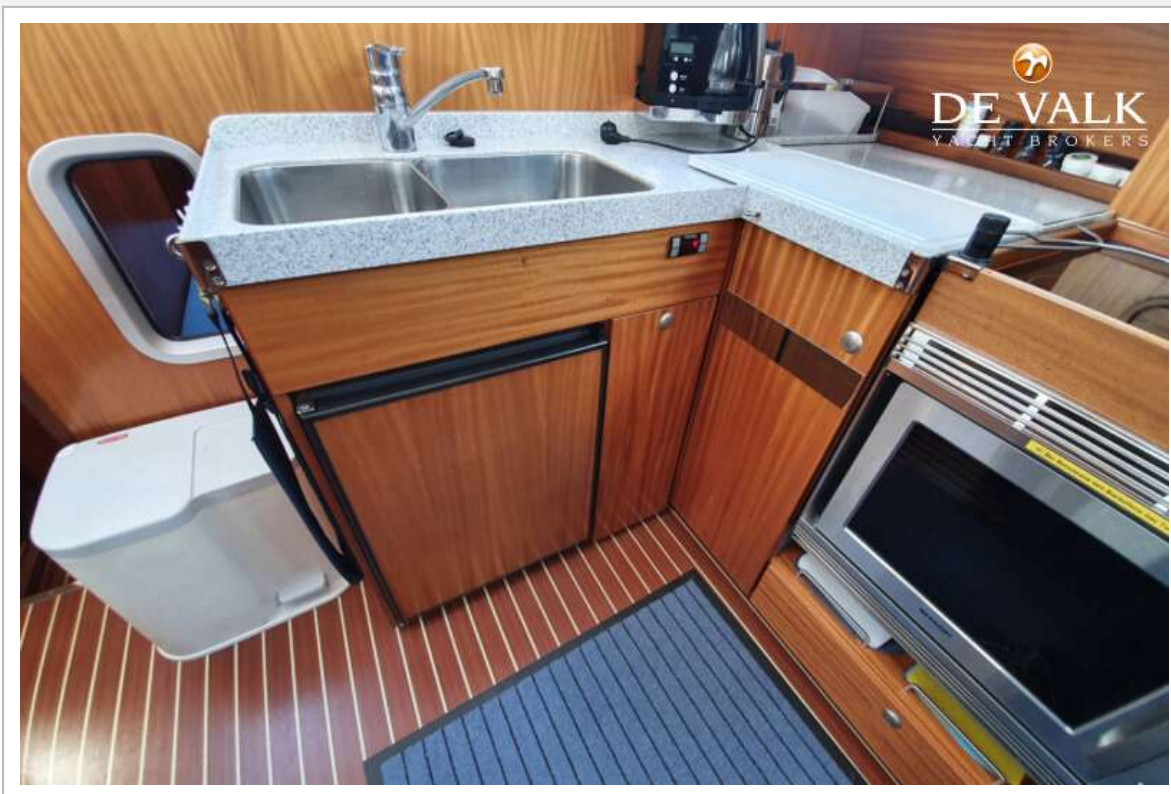
REINKE 15M



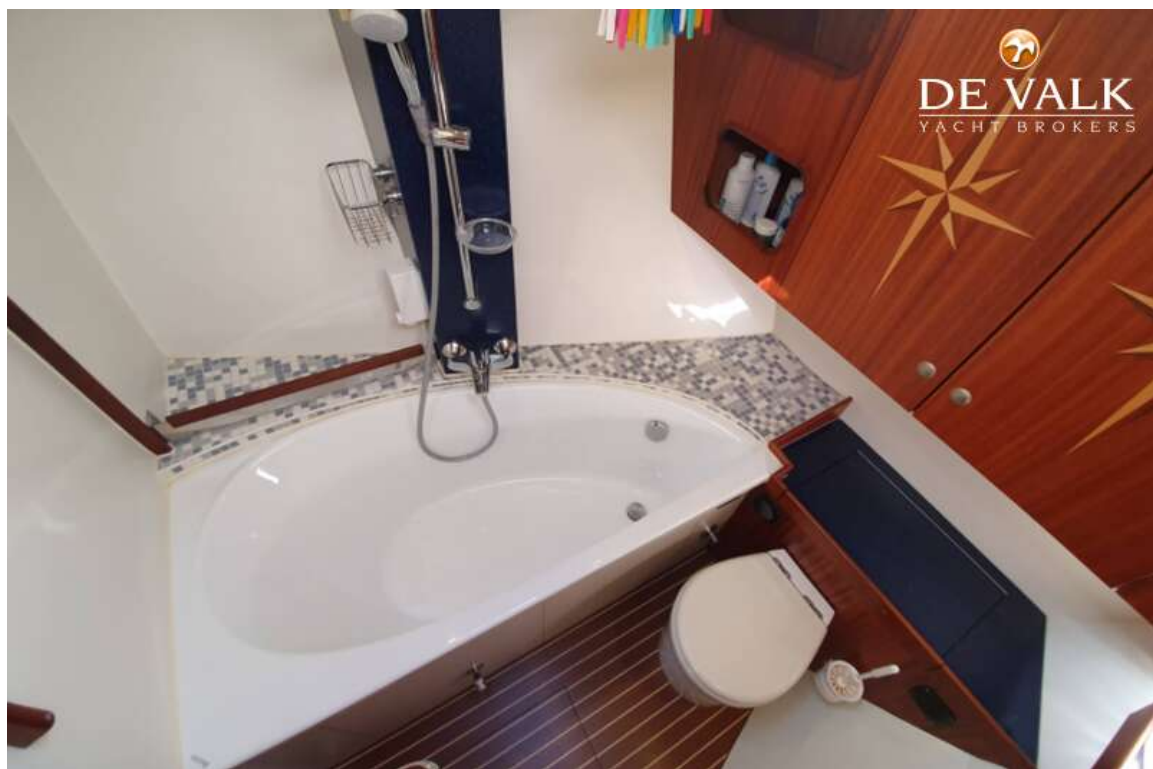
REINKE 15M



REINKE 15M



REINKE 15M



REINKE 15M



REINKE 15M



REINKE 15M



REINKE 15M

