



HERMINE 40



DE VALK
YACHT BROKERS

HERMINE 40

BROKER'S COMMENTS

The Hermine 40 is an aluminium sailing yacht with everything on board to allow self-sufficient living. She is well equipped with a Nanni diesel/electric engine, bowthruster, generator, watermaker etc. 'Seeweek is ready for a new adventure'.

Reinier van der Wolf

SPECIFICATIONS

Dimensions	11.90 x 4.10 x 0,90 / 2.50 (m)	Builder	Techimar, St Malo
Built	2002	Cabins	2
Material	Aluminium	Berths	6
Engine(s)	1 x Nanni 4.220HE Hybrid delec	Hp/Kw	50.00 (hp), 36.75 (kw)
Asking price	sold (VAT)	Lying	elsewhere / Not at sales office

CONTACT

Sales office	De Valk Monnickendam B.V.	Telephone	+31 (0)299 65 63 50
Address	Hoogedijk 6 1145 PM Katwoude NL	E-mail	monnickendam@devalk.nl

DISCLAIMER

These particulars are given in good faith as supplied but cannot be guaranteed.



GENERAL

Model	HERMINE 40
Type	sailing yacht
LOA (m)	11,90
LWL (m)	11,43
Beam (m)	4,10
Draft (m)	2,50
Draft min (m)	0,90
Year built	2002
Builder	Techimar, St Malo
Country	France
Designer	Franscoise Lucas
Displacement (t)	10
Ballast (tonnes)	3
CE norm	A
Hull material	aluminium
Hull colour	silver gray
Keel type	lifting keel
Deck material	aluminium
Deck finish	TBS non-skid profile mats
Superstructure deck finish	TBS non-skid profile mats
Cockpit deck finish	teak
Antifouling (year)	Sonic Shield 111 electronic acoustic
Deckhatch	yes
Insulation	yes
Fuel tank (litre)	aluminium 1x 550 L.
Level indicator (fuel tank)	Marinelec at chart table
Freshwater tank (litre)	aluminium 1x 600 L.
Level indicator (freshwater)	Marinelec at chart table
Greywater tank (litre)	stainless steel 1x
Level indicator (greywater)	(not commissioned)



More info on hull

Twin rudders on skegs allowing beaching

ACCOMMODATION

Cabins	2
Berths	6
Interior	ash
Floor	teak and holly
Saloon	yes
Headroom saloon (m)	yes
Heating	Mikuni
Heating 2	Refleks 66M diesel oil heater
Galley	yes
Countertop	corian
Sink	2x
Cooker	calor gas Force 10 2-burner
Fridge	yes
Hot water system	yes
Water pressure system	electrical
Manual and/or foot pump	yes
Owners cabin	double bed
Toilet	shared Jabsco 2000
Toilet system	manual
Guest cabin 1	double bed

MACHINERY

No of engines	1
Make	Nanni
Type	4.220HE Hybrid
HP	50,00
kW	36,75
Fuel	diesel electric



Year installed	2002
Engine hours	1520 (1-8-2016)
Engine cooling system	freshwater heat exchanger
Drive	shaft
Bowthruster	Max Power VIP100 retracting
Gearbox	PRM 150 (2011)
Propeller type	MaxProp
Propeller blades	Prop Shaft seal renewed 2009 3
Manual bilge pump	yes
Electric bilge pump	yes
Electrical installation	yes
Generator	Nanni diesel engine used as 5Kw generator
Generator 2	Airbreeze 48V wind generator
Start battery	380Ah
Service battery	180Ah
Electric engine battery	180Ah engine and windlass
Bowthruster battery	100Ah
Windlass battery	180Ah engine and windlass
Battery charger	Dolphin 30Ah 12V automatic charger, mains insulation transformer and distribution box. Dolphin 30Ah 12V automatic battery charger mains distribution box.
Battery charger/inverter	Victron Energy Multiplus 48V 35Ah
Solar panel	4x 48W.
Shorepower	with cable
Watermaker	Katadyn Power Survivor 40E (not commissioned)
Extra info	Power is by parallel diesel/electric hybrid propulsion, generations and re-generation (Juni 2011)

NAVIGATION

Windset	NKE Gyropilot graphic, wind, speed, depth, autopilot
Repeater	NKE
Autopilot	NKE Gyropilot graphic, wind, speed, depth, autopilot



Radar	Radar/AIS hub
Plotter	Lowrance HDS7M
AIS receiver	Transas
Radio receiver	Icom IC-R75
Extra info	Meteoman barometer NMEA 2000 hub

EQUIPMENT

Fixed windscreen	yes
Bathing platform	yes
Boarding ladder	yes
Anchor	Danforth
Anchor chain	yes
Anchor 2	Joardan Drogue (unused)
Anchor chain	yes
Other ground tackle	yes
Windlass	electrical Maxwell RC10
Dinghy	Zodiac CFR310
Outboard	Torqeedo Travel 1003S
Life raft	container Plastimo
Life raft (pers)	container 6
Last life raft survey	19-03-2014
TV	Toshiba digital LED TV with 4 cabin speakers links to Sony radio/USB/CD player
Radio-cd player	Sony
Extinguisher in engine room	yes
Auto extinguisher system	yes

RIGGING

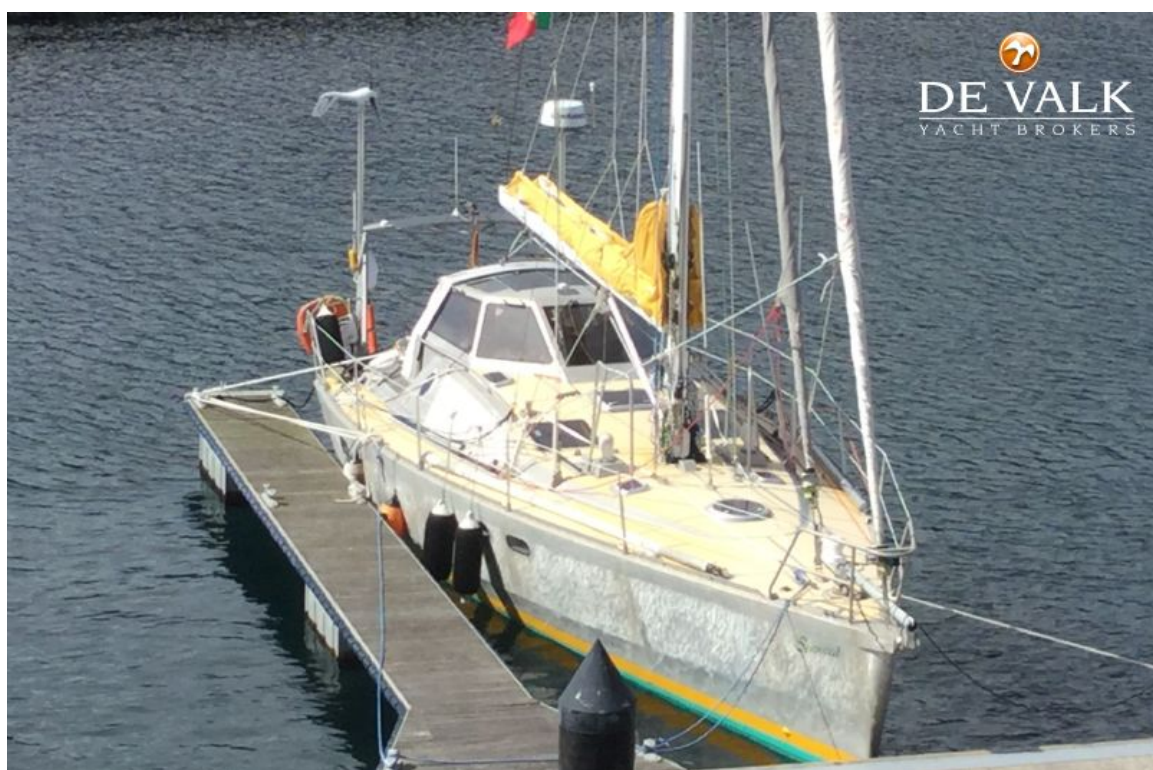
Rigging	cutter
Standing rigging	S/s renewed in May 2015
Brand mast	Marechal



Spreaders	2x
Mainsail	Elvestrom with 4 reefs, lazy jacks and boom bag (2002)
Fully battened mainsail	yes
Genoa	115% Hydranet Spectra crosscut, UV strip by Jeckells (2013) on Profurl NC42
Spinnaker	Top down furling Elvestrom spinnaker with Karver KF2 and retractable bowsprit
Staysail	Elestrom (2002) recut for Profurl C350 (2014)
Secondary sheet winch	2x Andersen 40ST 2SP
Genoa sheetwinches	2x Andersen 52ST 2SP
Halyard winches	2x Andersen 28ST 2SP
Reefing winch	1x Andersen 12ST 1SP
Spi-pole	2x



HERMINE 40



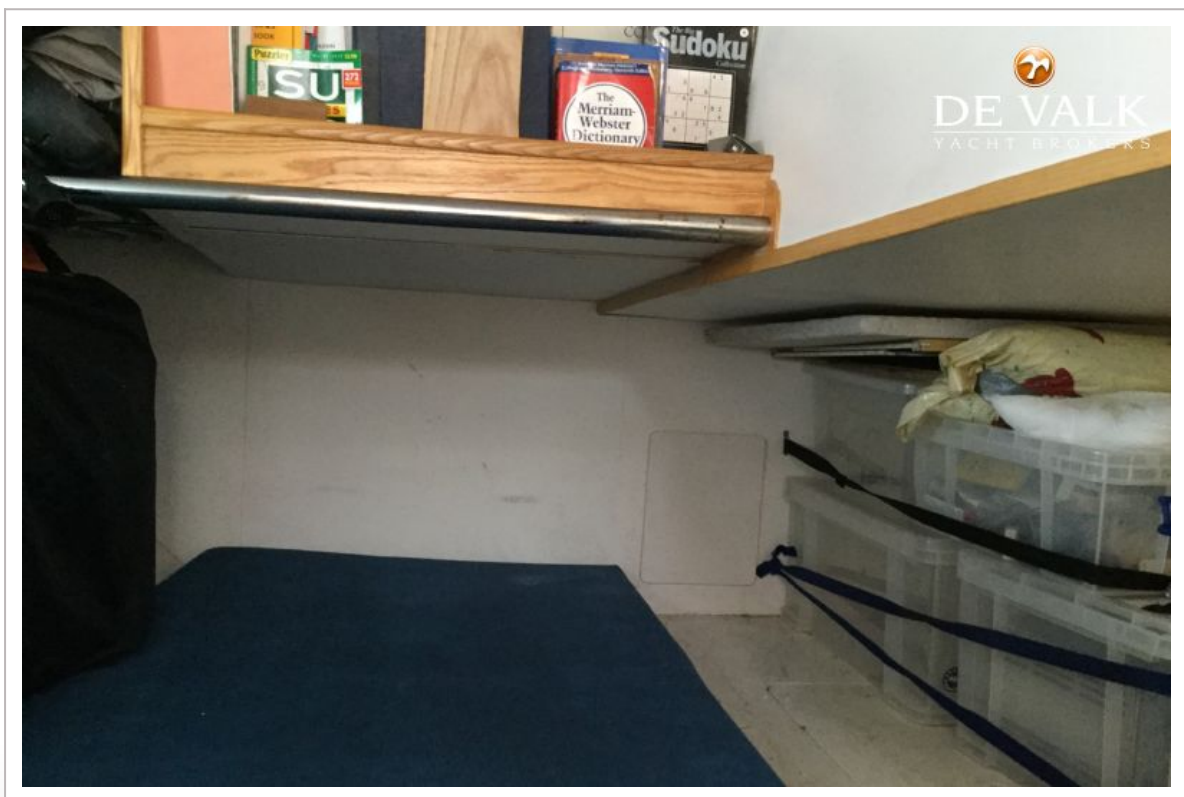
HERMINE 40



HERMINE 40



HERMINE 40



HERMINE 40

