



## MOTORSAILER KETCH CUTTER 1500

# MOTORSAILER KETCH CUTTER 1500

## BROKER'S COMMENTS

This sturdy built steel Kotter 1500 is built in 2003 and designed by Gaastmeer in The Netherlands. She is equipped with a 80HP Iveco diesel engine of 2004, bowthruster, Webasto hot air and central heating, floor heating in the bathroom and a headroom of 2.10 M. The owner invested a lot in 'Nora' in the recent years. She has new antifouling, the hull is painted, new hydrophore, new wooden mast and much more. Make an appointment to see this Kotter in our sales marina.

*Sander van der Voorn*

## SPECIFICATIONS

<b>Dimensions</b>	14.22 x 4.90 x 1.35 (m)	<b>Builder</b>	Talsma / Loedeman
<b>Built</b>	2003	<b>Cabins</b>	2
<b>Material</b>	Steel	<b>Berths</b>	4
<b>Engine(s)</b>	1 x Iveco 8045MOB diesel	<b>Hp/Kw</b>	80.27 (hp), 59.00 (kw)
<b>Asking price</b>	sold (VAT )	<b>Lying</b>	at sales office

## CONTACT

<b>Sales office</b>	De Valk Monnickendam B.V.	<b>Telephone</b>	+31 (0)299 65 63 50
<b>Address</b>	Hoogedijk 6 1145 PM Katwoude NL	<b>E-mail</b>	monnickendam@devalk.nl

## DISCLAIMER

These particulars are given in good faith as supplied but cannot be guaranteed.



# MOTORSAILER KETCH CUTTER 1500

## GENERAL

Model	MOTORSAILER KETCH CUTTER 1500
Type	motorsailer
LOA (m)	14,22
LWL (m)	12,00
Beam (m)	4,90
Draft (m)	1,35
Headroom (m)	2,10
Year built	2003
Launched	2004
Builder	Talsma / Loedeman
Country	The Netherlands
Designer	Gaastmeer
Displacement (t)	27
CE norm	C
Hull material	steel
Hull colour	antracite gray
Hull thickness (mm)	6 mm
Hull shape	round-bilged
Keel type	long keel
Superstructure material	steel Wood and
Superstructure (mm)	5 mm
Deck plate thickness (mm)	5 mm
Rubbing strake	steel
Deck material	steel
Deck finish	paint
Superstructure deck finish	paint
Cockpit deck finish	paint
Antifouling (year)	2017
Window frame	wood Gebo
Window material	tempered glass



# MOTORSAILER KETCH CUTTER 1500

Deckhatch	yes
Insulation	glasswool
Mast can be lowered	manual
Steadying sail with mast	yes
Fuel tank (litre)	steel 850 L.
Freshwater tank (litre)	steel With filter and UV light
Level indicator (freshwater)	yes
Blackwater tank (litre)	yes
Wheel steering	hydraulic
Inside helm position	yes
Outside helm position	hydraulic
More info on paintwork	Hull painted in 2017

## ACCOMMODATION

Cabins	2
Berths	4
Interior	mahogany
Floor	wood
Open cockpit	yes
Aft deck	yes
Pilot house/deck saloon	yes
Saloon	yes
Headroom saloon (m)	2,10 M.
Heating	diesel ducted hot air Webasto
Heating 2	central heating
Dining room	yes
Opening door to cockpit	yes
Galley	yes
Countertop	granite
Sink	stainless steel 2x
Cooker	calor gas Pelgrim



# MOTORSAILER KETCH CUTTER 1 500

Microwave/oven combi	Sharp platinum collection
Hot water system	Daalderop boiler
Water pressure system	Hydrophore 2017
Owners cabin	double bed + single bed
Bed length (m)	2 M.
Wardrobe	hanging and drawers 2x
Bathroom	separate With underfloor heating via cv
Toilet	separate
Toilet system	vacuum Via blackwater tank
Wash basin	in the bathroom
Shower	separate With underfloor heating via cv
Guest cabin 1	bunk bed
Bed length (m)	1,90 M.
Wardrobe	hanging/drawers/shelves
Washing machine/dryer combi	yes

## MACHINERY

No of engines	1
Make	Iveco
Type	8045MOB
HP	80
kW	59,00
Fuel	diesel
Year installed	2004
Engine hours	1696
Engine cooling system	freshwater heat exchanger
Drive	shaft
Shaft seal	yes
Engine controls	bowden cable
Gearbox	hydraulic
Bowthruster	electric Vetus 160 kgf



# MOTORSAILER KETCH CUTTER 1500

Exhaust	watercooled
Propeller type	fixed Revision 2016
Propeller blades	2
Propeller shaft material	steel
Shaft lubrication	water
Electrical installation	12/220 V
Generator	wet exhaust Stanford 10kW
Running hours generator	290
Batteries	yes
Start battery	2x 120Ah
Service battery	4X 220Ah (2017)
Generator battery	100Ah
Battery monitor	Victron energy
Battery charger	Victron Skylla-TG 24/50
Inverter	Victron Energy transformer
Solar panel	2016
Diode battery combiners	Victron MPPT 100i30
Shorepower	with cable

## NAVIGATION

Compass	Cassens & Plath
Depth sounder	Raymarine ST 60 Tridata
Windset	Raymarine ST60
VHF	Simrad RT64 (refurbished in 2017) No atis.
Rudder angle indicator	Raymarine ST60
Plotter/GPS	Geonav 6 Sunshine
Navigation lights	yes

## EQUIPMENT

Fixed windscreen	yes
Cockpit cover	yes



# MOTORSAILER KETCH CUTTER 1500

Boarding ladder	stainless steel
Anchor	CQR Plough
Anchor chain	yes
Windlass	manual
Dinghy	rigid hull
Outboard	2,2PK Honda
Davits	steel
Davits controls	manual
Sea railing	steel
Grab rail (superstructure)	steel
Railing side opening gates	2x
Wiper	2x
Horn	air pressure
TV	yes
TV receiver	yes
Fire extinguisher	3x

## RIGGING

Rigging	gaff-rig
Standing rigging	wire
Material mast	wood 2017
Mainsail	yes
Primary sheet winch	4x



# MOTORSAILER KETCH CUTTER 1500





# MOTORSAILER KETCH CUTTER 1500



# MOTORSAILER KETCH CUTTER 1500





# MOTORSAILER KETCH CUTTER 1500



# MOTORSAILER KETCH CUTTER 1500





# MOTORSAILER KETCH CUTTER 1500



# MOTORSAILER KETCH CUTTER 1500





# MOTORSAILER KETCH CUTTER 1500

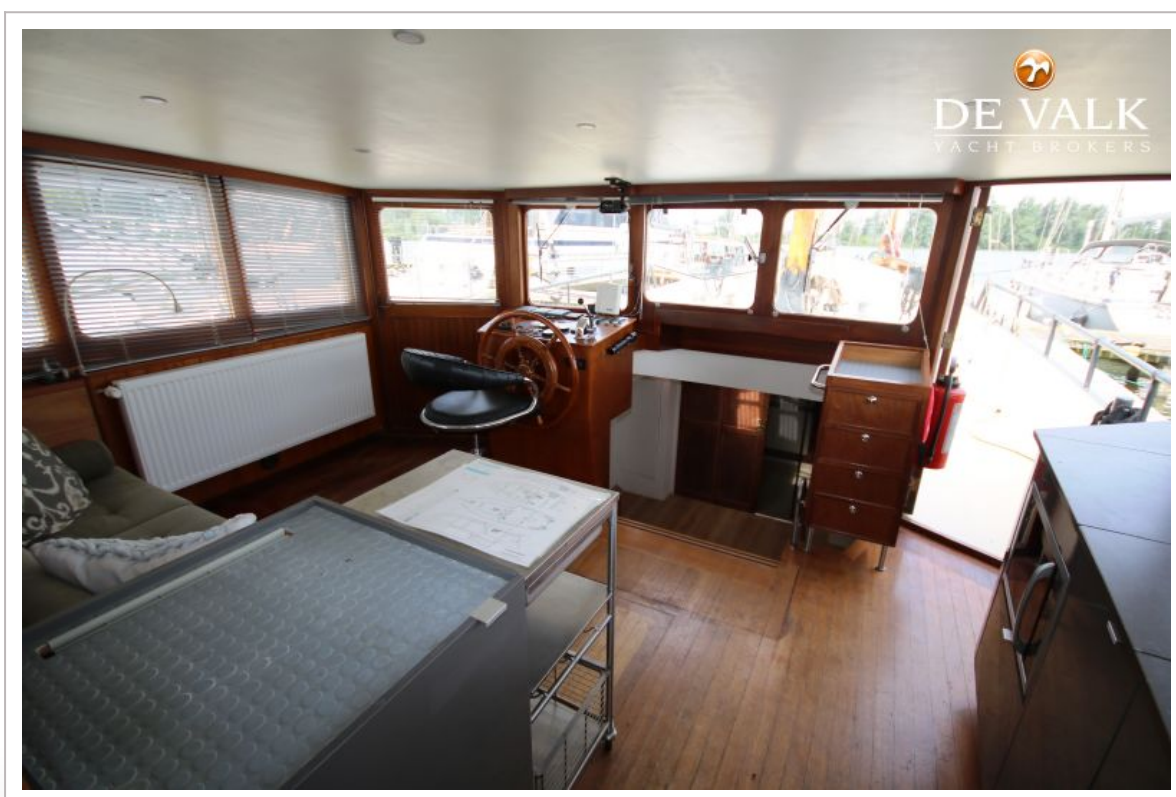


# MOTORSAILER KETCH CUTTER 1500

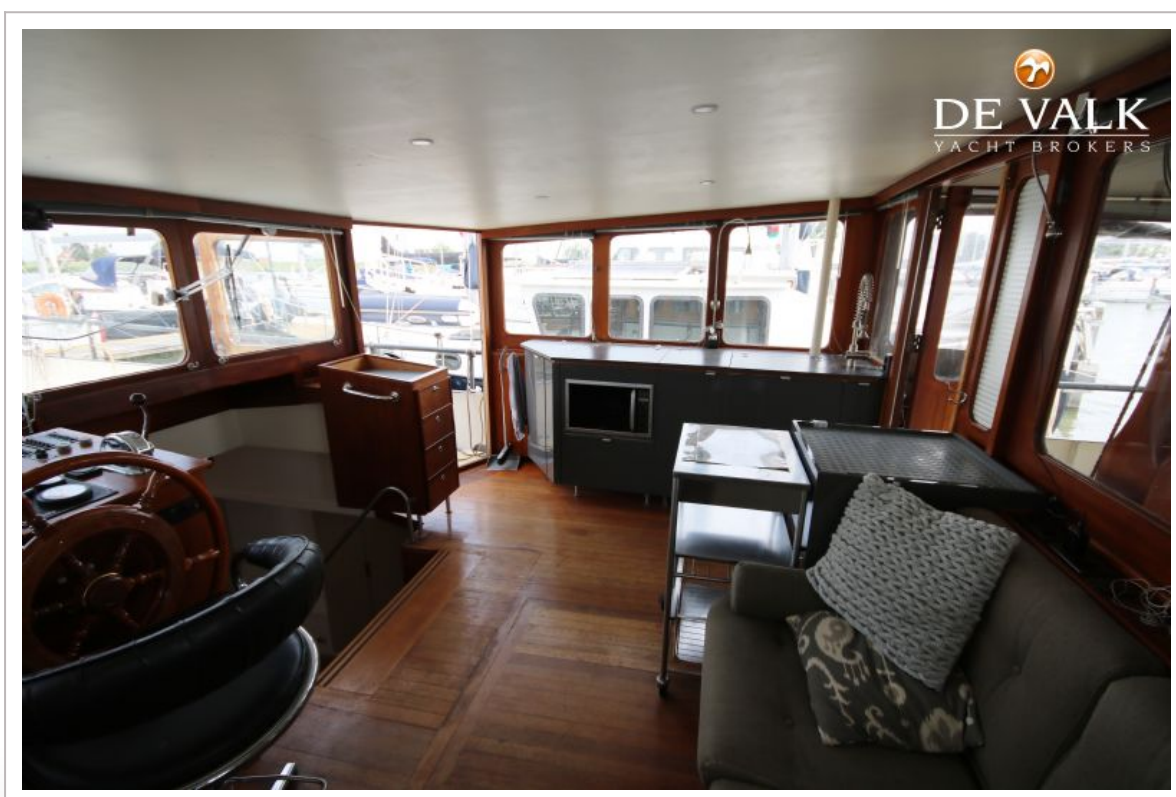
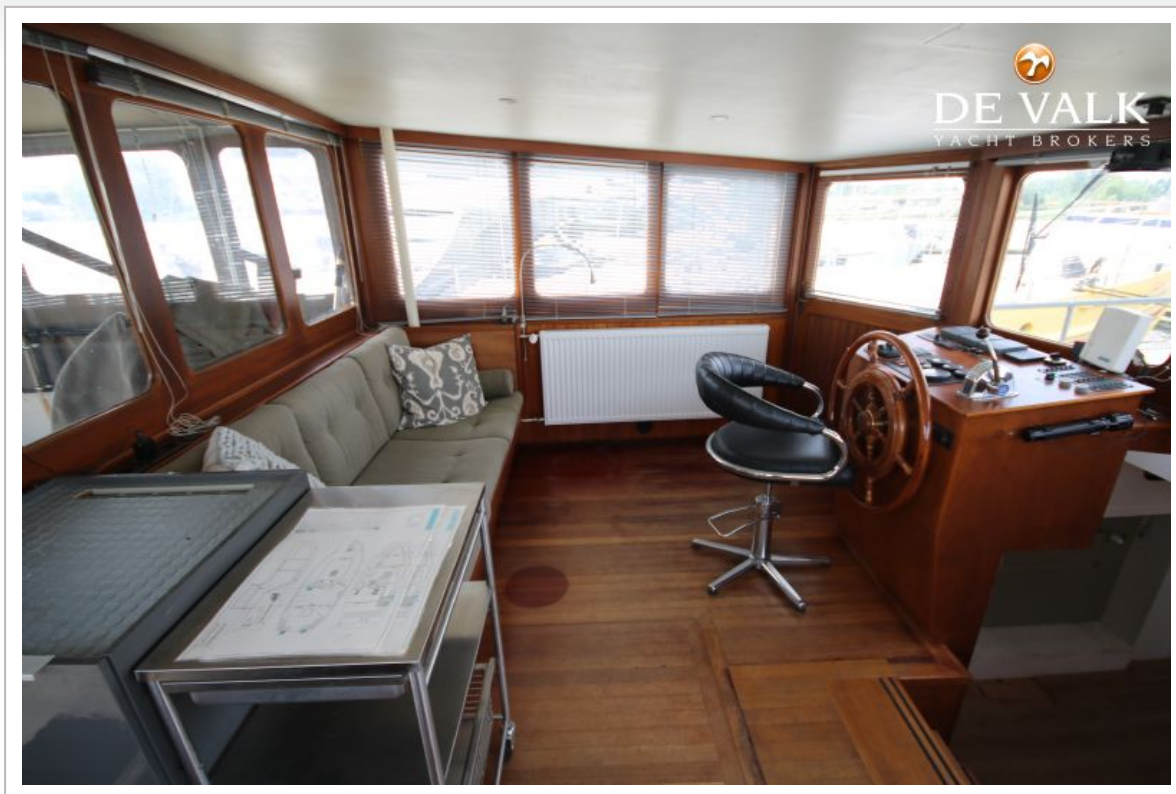




# MOTORSAILER KETCH CUTTER 1500

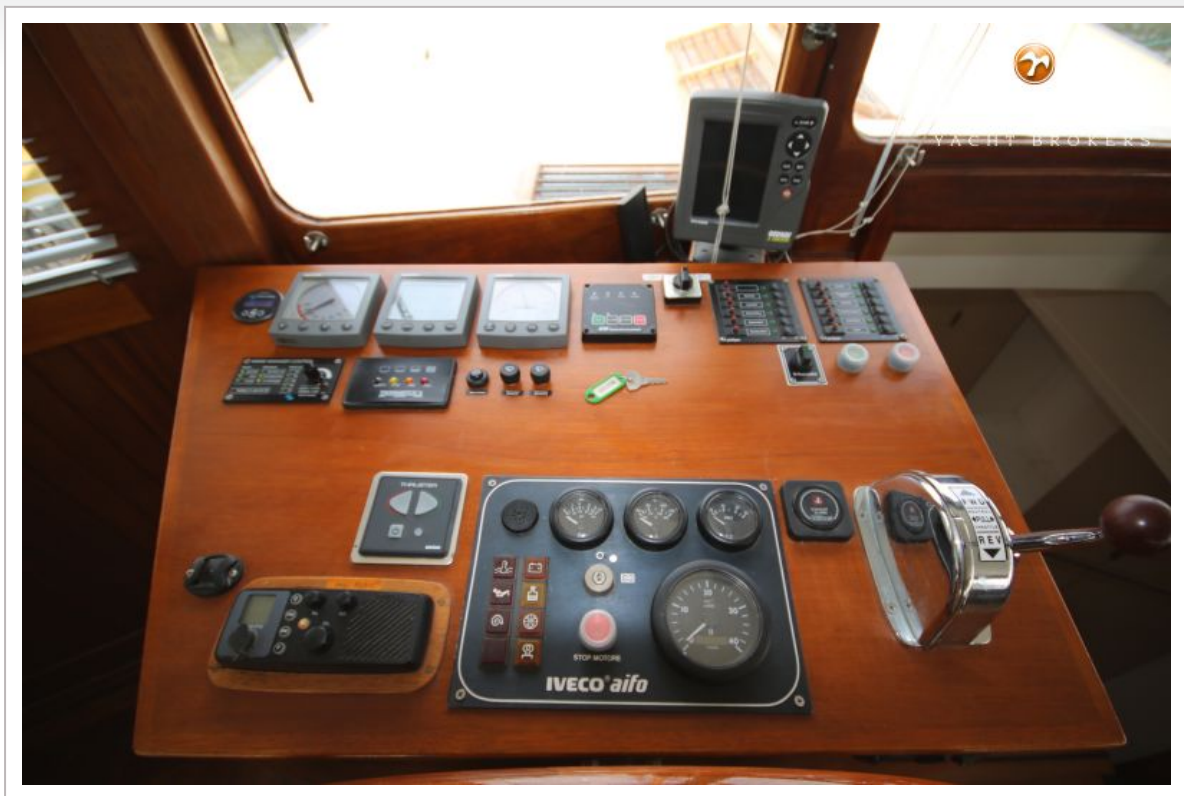


# MOTORSAILER KETCH CUTTER 1500





# MOTORSAILER KETCH CUTTER 1500

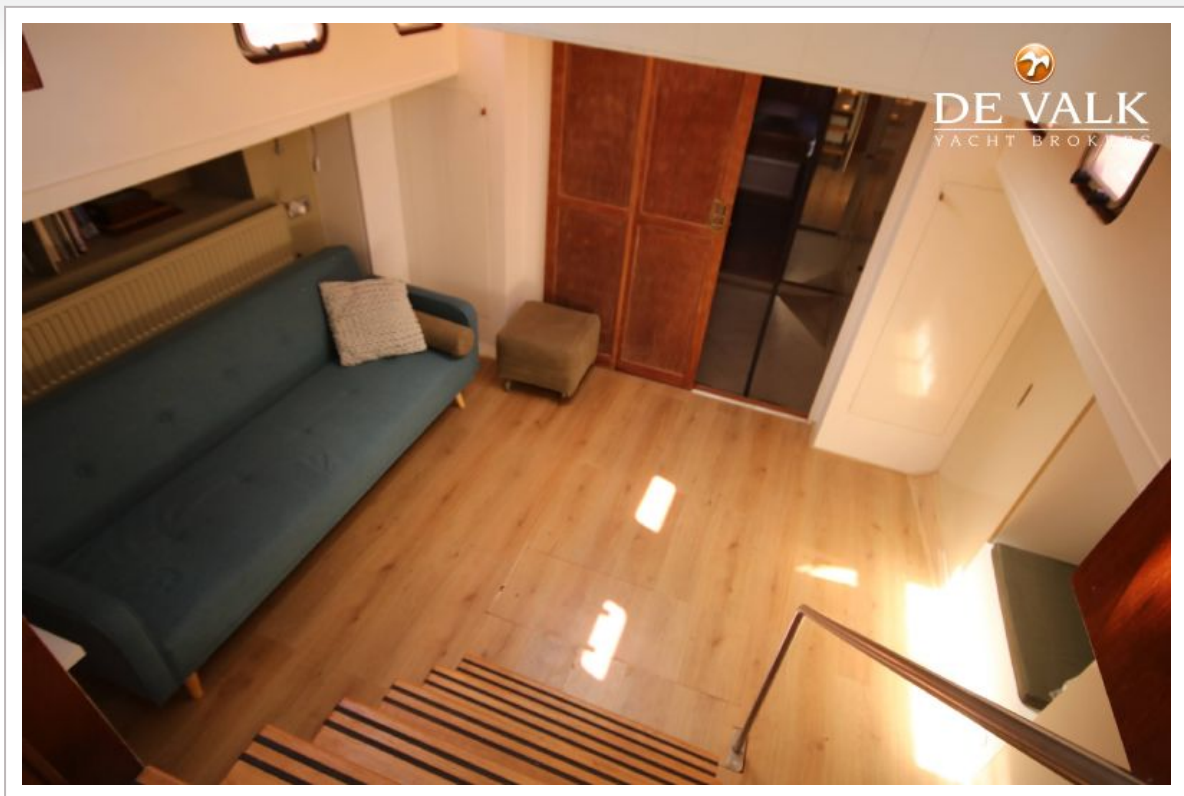


# MOTORSAILER KETCH CUTTER 1500

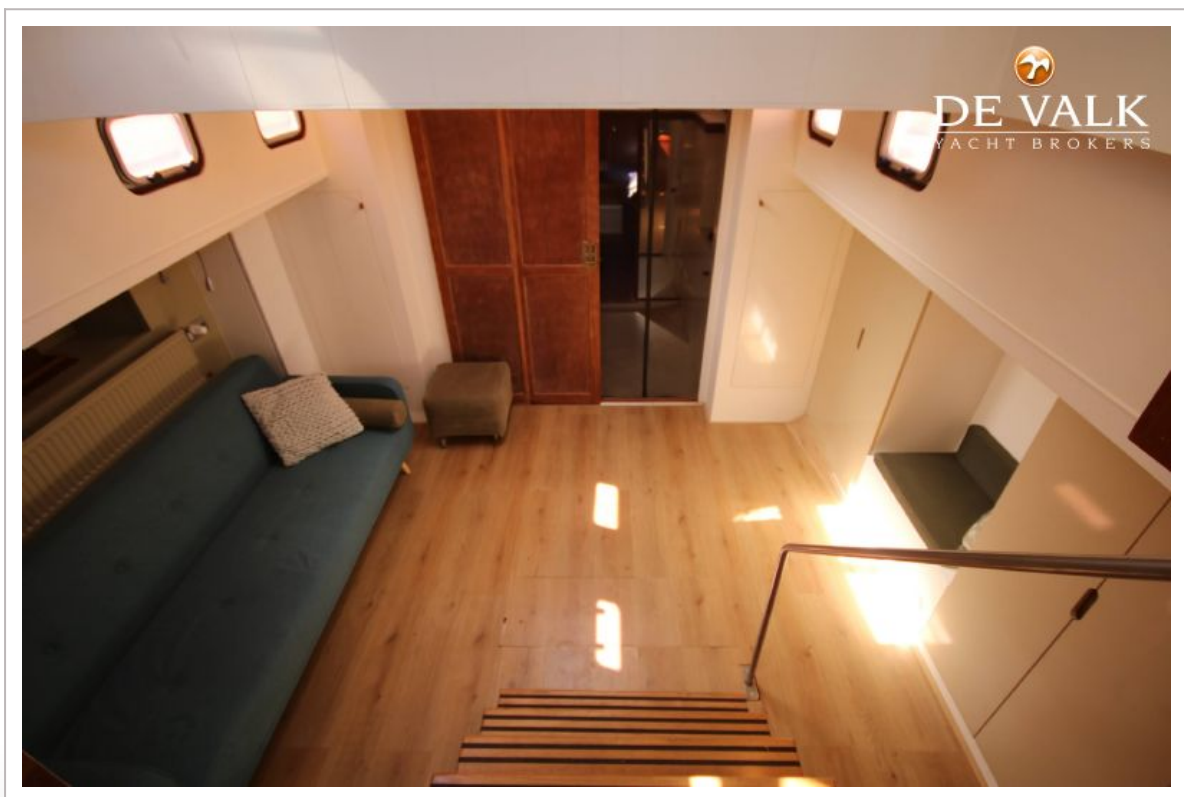
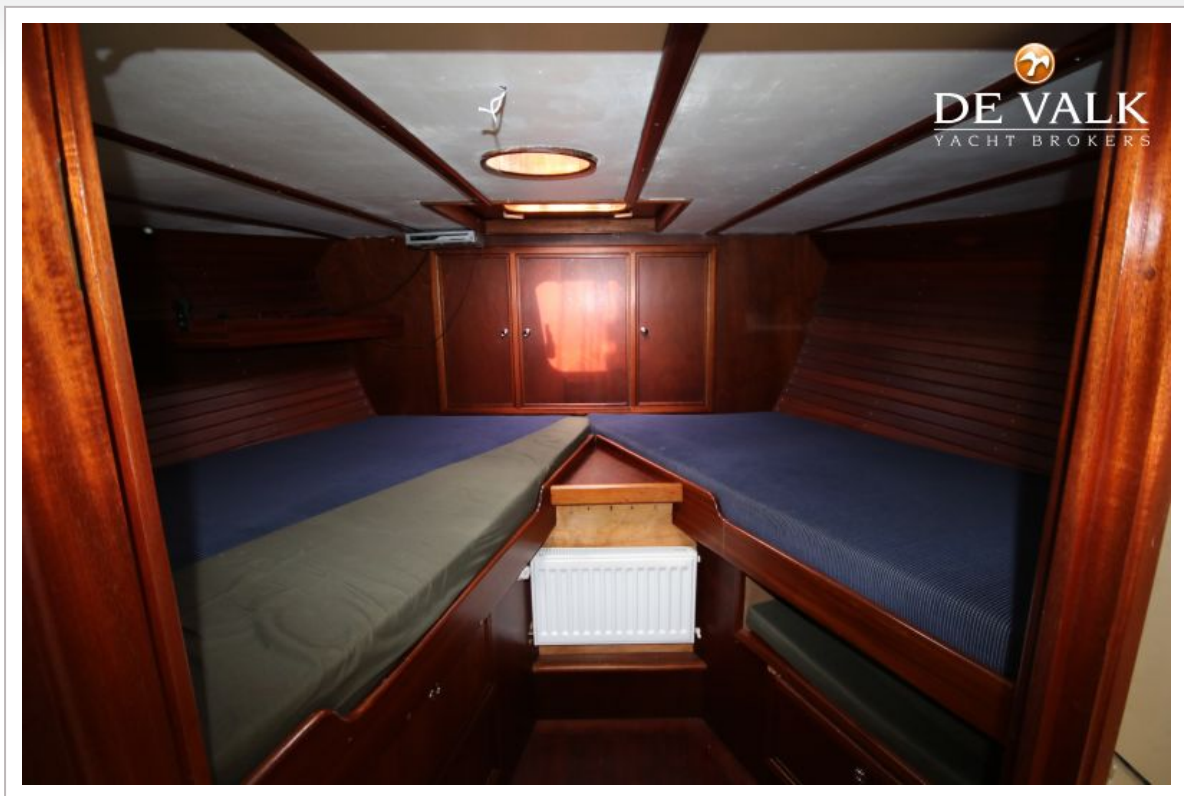




# MOTORSAILER KETCH CUTTER 1500

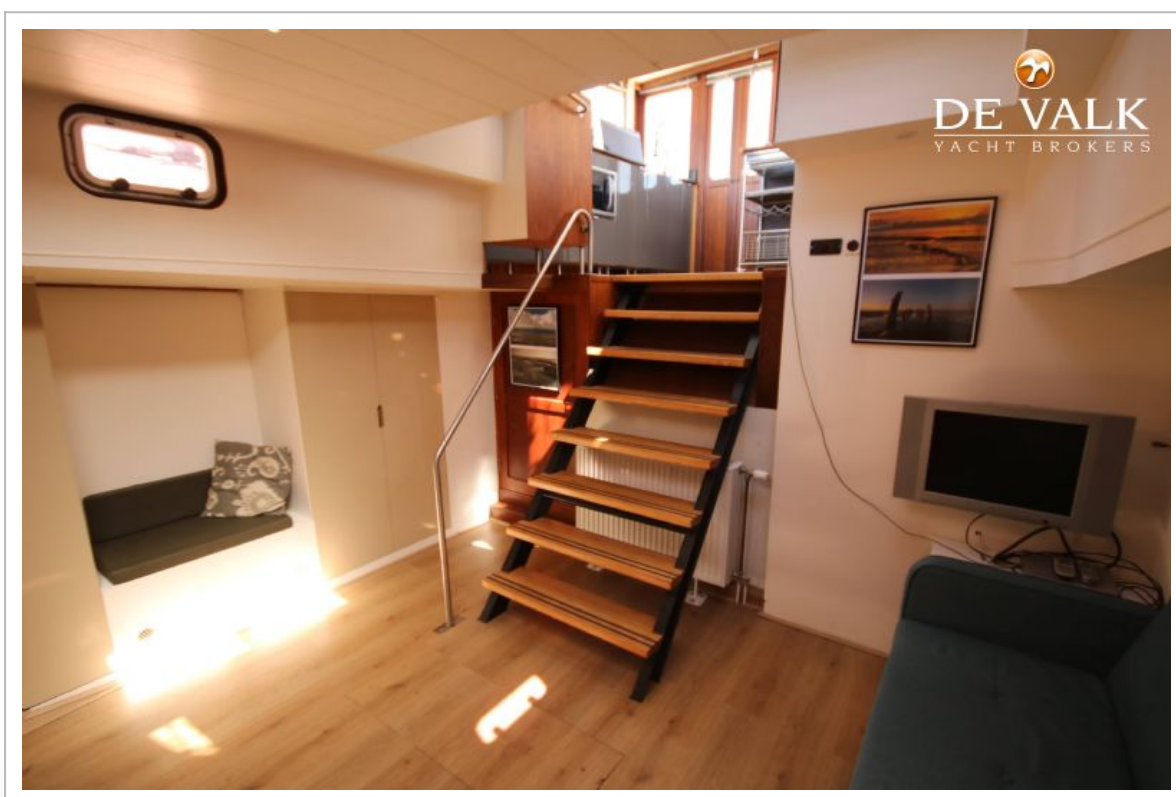
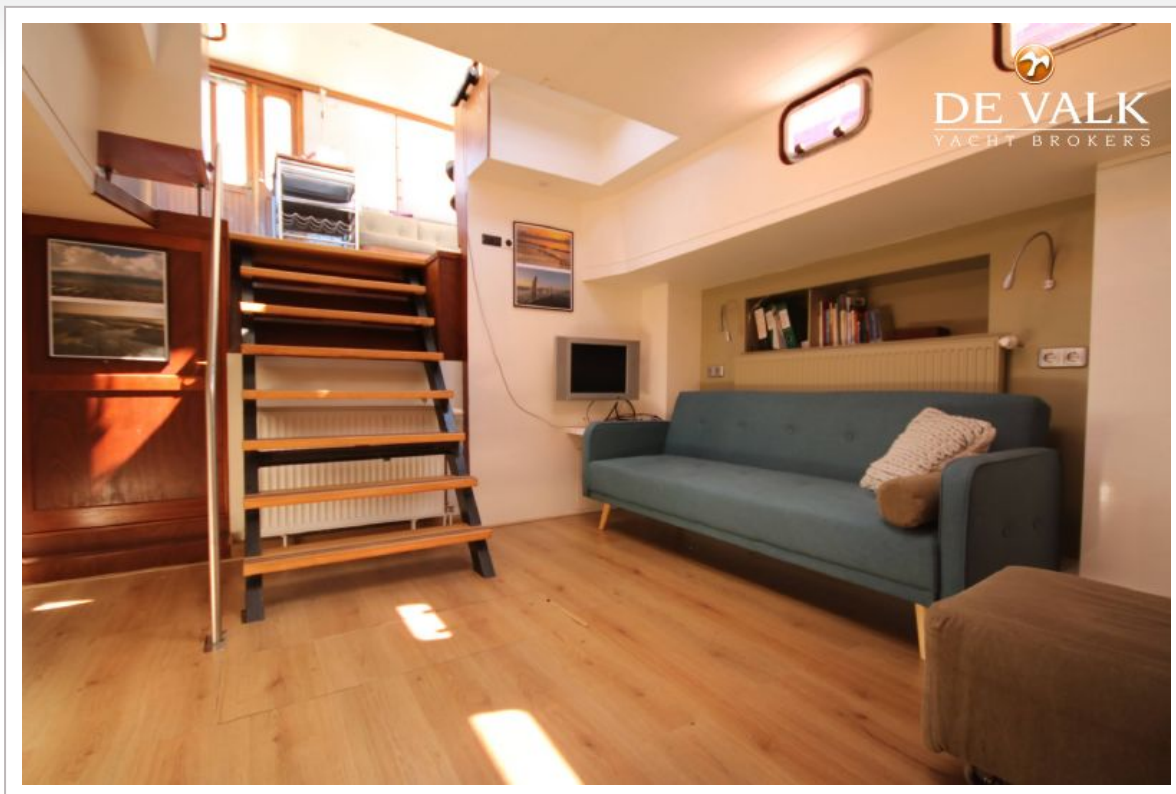


# MOTORSAILER KETCH CUTTER 1500

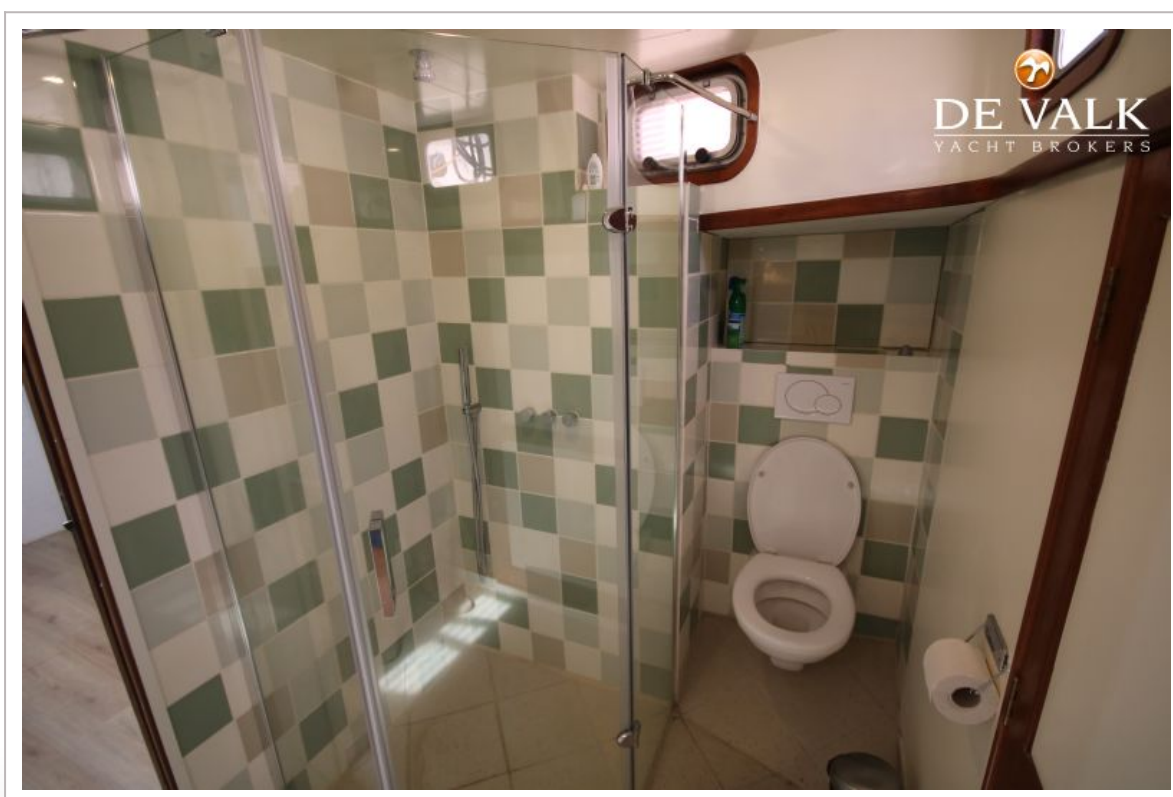




# MOTORSAILER KETCH CUTTER 1500



# MOTORSAILER KETCH CUTTER 1500

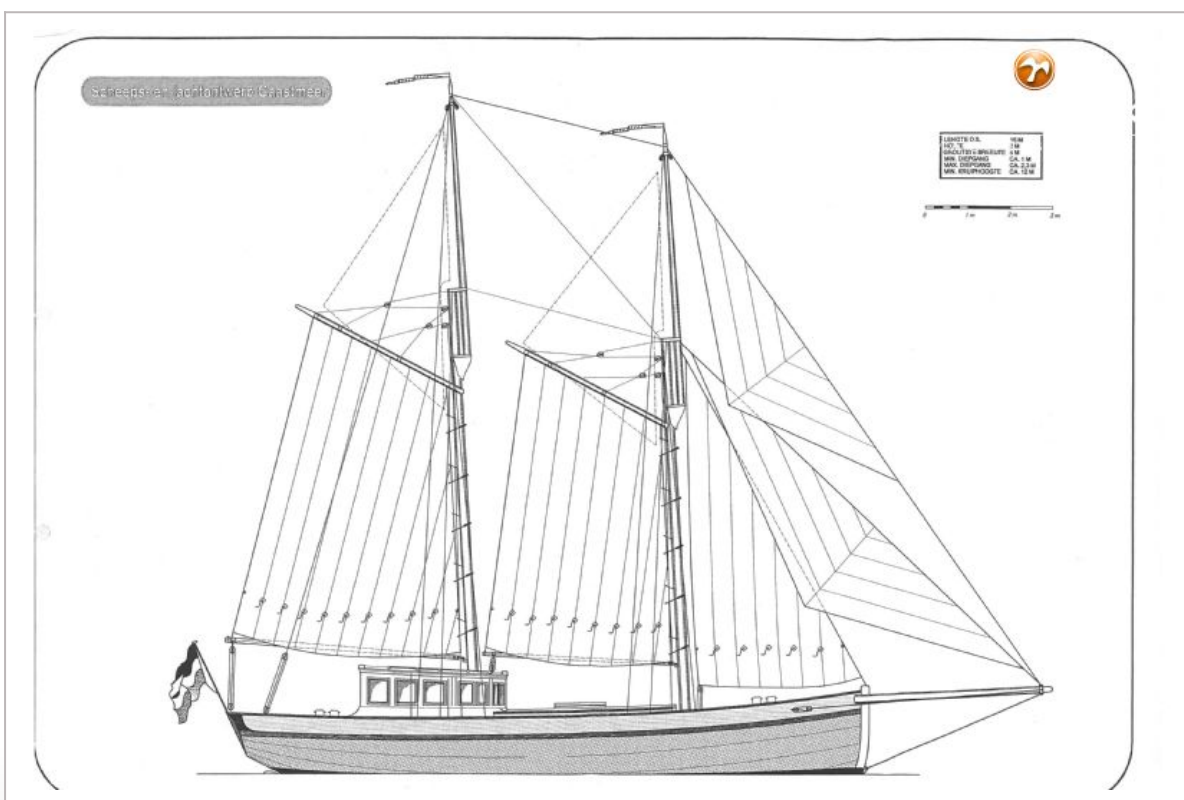




# MOTORSAILER KETCH CUTTER 1500



# MOTORSAILER KETCH CUTTER 1500



# MOTORSAILER KETCH CUTTER 1500

