



DEHLER 39



**DE VALK**  
YACHT BROKERS

## BROKER'S COMMENTS

This well kept Dehler 39 is built in 2000 and is spacious with her three cabins. She is the ideal combination of sailing performance and long distance cruising comfort. 'Nixe' is well equipped with a Webasto heating, 38HP Yanmar engine, and a good sail robe.

*Sander van der Voorn*

## SPECIFICATIONS

<b>Dimensions</b>	11.81 x 3.85 x 1.98 (m)	<b>Builder</b>	Dehler Yachtbau GmbH
<b>Built</b>	2000	<b>Cabins</b>	3
<b>Material</b>	GRP	<b>Berths</b>	7
<b>Engine(s)</b>	1 x Yanmar 3JH3E diesel	<b>Hp/Kw</b>	38.00 (hp), 27.93 (kw)
<b>Asking price</b>	sold (VAT )	<b>Lying</b>	at sales office

## CONTACT

<b>Sales office</b>	De Valk Monnickendam B.V.	<b>Telephone</b>	+31 (0)299 65 63 50
<b>Address</b>	Hoogedijk 6 1145 PM Katwoude NL	<b>E-mail</b>	monnickendam@devalk.nl

## DISCLAIMER

These particulars are given in good faith as supplied but cannot be guaranteed.



## GENERAL

Model	DEHLER 39
Type	sailing yacht
LOA (m)	11,81
LWL (m)	10,70
Beam (m)	3,85
Draft (m)	1,98
Air draft (m)	18,30
Headroom (m)	1,95
Year built	2000
Builder	Dehler Yachtbau GmbH
Country	Germany
Designer	Judel en Vrolijk
Displacement (t)	7,8
Ballast (tonnes)	cast iron and lead 2,9
CE norm	A
Hull material	GRP
Hull colour	blue
Hull shape	round-bilged
Keel type	fin keel with bulb
Superstructure material	GRP
Rubbing strake	rubber
Deck material	GRP
Deck finish	Treadmaster Painted 2016
Superstructure deck finish	Treadmaster Painted 2016
Cockpit deck finish	teak
Antifouling (year)	2018
Dorades	2
Window frame	aluminium
Window material	polycarbonate
Deckhatch	yes



Fuel tank (litre)	stainless steel 108 L.
Level indicator (fuel tank)	yes
Freshwater tank (litre)	polyethylene 240 L.
Blackwater tank extraction	pump
Wheel steering	rack & pinion
Emergency tiller	yes

## ACCOMMODATION

Cabins	3
Berths	7
Interior	mahogany
Floor	woodprint
Open cockpit	yes
Saloon	yes
Headroom saloon (m)	1,97 M.
Heating	diesel ducted hot air Webasto Airtop 3500
Chart table	yes
Opening door to cockpit	yes
Galley	yes
Countertop	corian
Sink	stainless steel 2x
Cooker	calor gas
Oven	3-burner
Fridge	Compressor 2018
Hot water system	220V + engine Boiler
Water pressure system	electrical
Owners cabin	double bed
Bed length (m)	2,10 M.
Wardrobe	hanging and shelves
Bathroom	shared
Toilet	shared



Toilet system	manual
Wash basin	in the bathroom
Shower	shared
Guest cabin 1	double bed
Bed length (m)	2,10 M.
Wardrobe	hanging and shelves
Guest cabin 2	double bed
Bed length (m)	2,10 M.
Wardrobe	hanging and shelves

## MACHINERY

No of engines	1
Make	Yanmar
Type	3JH3E
HP	38,00
kW	27,93
Fuel	diesel
Year installed	2000
Maximum speed (kn)	8
Cruising speed (kn)	7
Engine cooling system	freshwater heat exchanger
Drive	sail-drive
Saildrive seal	Saildrive cuff replaced in 2014
Engine controls	bowden cable
Gearbox	mechanical
Exhaust	watercooled
Propeller type	folding
Propeller blades	2x
Propeller shaft material	Bronze
Manual bilge pump	yes
Electric bilge pump	yes



Electrical installation	12/230V
Batteries	yes
Start battery	1x
Service battery	2x
Battery charger/inverter	yes
Shorepower	with cable
Extra info	Saildrive cuff replaced in 2014
Extra info	engine service 11-2018

## NAVIGATION

Compass	yes
Depth sounder	Raymarine ST60
Log	Raymarine ST60
Windset	Raymarine ST60
Repeater	yes
VHF	ICOM
Autopilot	on quadrant Raymarine
GPS	yes
Personal computer	yes
AIS receiver	yes

## EQUIPMENT

Sprayhood	yes
Bathing platform	yes
Boarding ladder	stainless steel
Deck shower	yes
Anchor	CQR Plough
Anchor chain	Line
Sea railing	wire
Grab rail (superstructure)	stainless steel
Pushpit	yes



<b>Pulpit</b>	yes
<b>Life raft</b>	container
<b>Life raft (pers)</b>	container 4
<b>Last life raft survey</b>	Must be checked in 2016
<b>Safety lines on deck</b>	yes
<b>Fenders</b>	yes
<b>Mooring lines</b>	yes
<b>Spare parts</b>	yes
<b>Radio-cd player</b>	yes
<b>Speakers in salon</b>	yes
<b>Clock - barometer</b>	yes
<b>Fire extinguisher</b>	yes

## RIGGING

<b>Rigging</b>	sloop 7/8
<b>Brand mast</b>	Sparcraft
<b>Material mast</b>	aluminium
<b>Spreaders</b>	3x
<b>Mainsail</b>	Doyle Raudaschl (2014) Quantum sails (2014)
<b>Fully battened mainsail</b>	yes
<b>High aspect</b>	Doyle Raudaschl (2013)
<b>Genoa II</b>	Sail Select (2008) new
<b>Spinnaker</b>	1x big + 1x storm. One with cover.
<b>Reefing System</b>	quick-one-line-reefing
<b>Backstay adjuster</b>	mechanical
<b>Boomvang</b>	tackle
<b>Primary sheet winch</b>	2x Harken ST 48
<b>Secondary sheet winch</b>	2x Harken ST 40
<b>Spi-pole</b>	aluminium



# DEHLER 39





## DEHLER 39



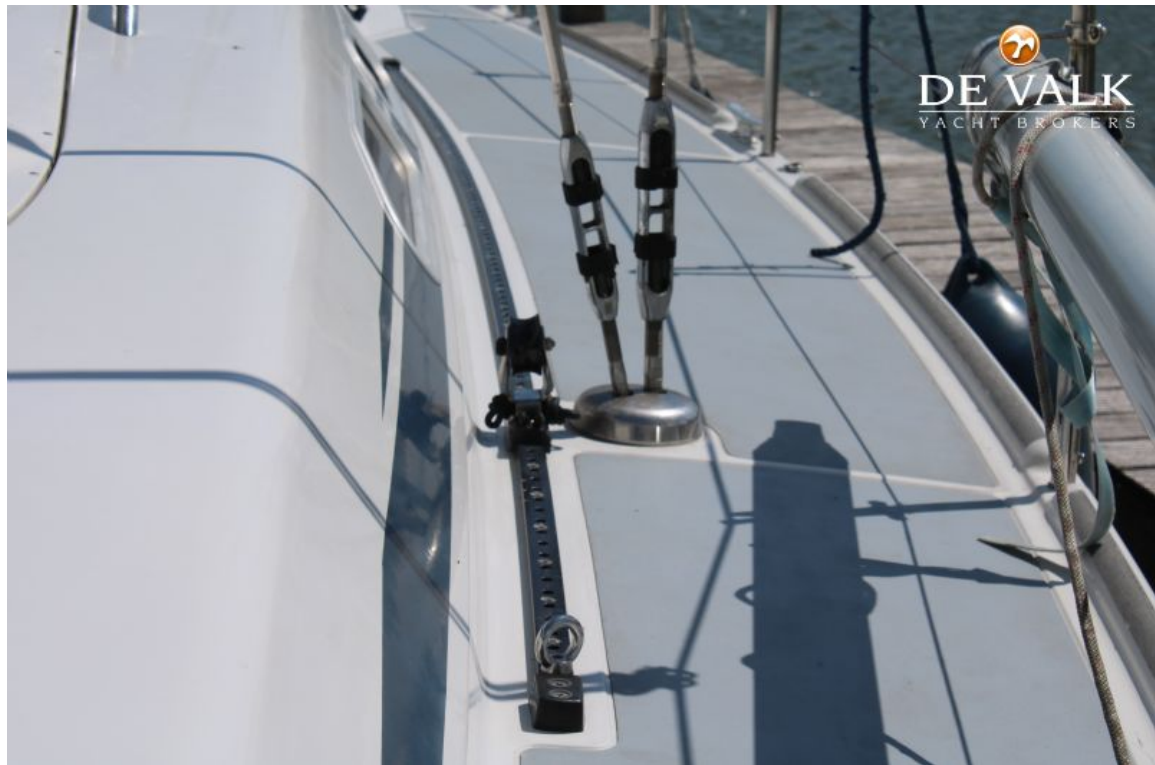




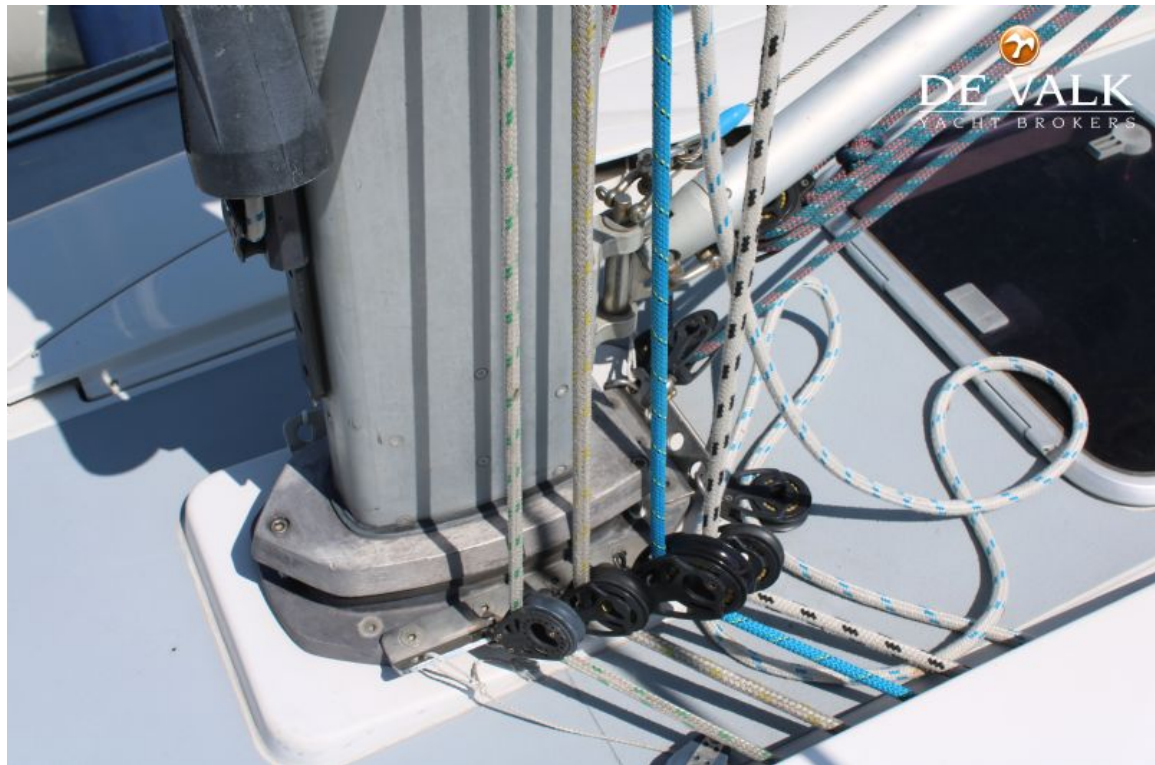
# DEHLER 39



# DEHLER 39







# DEHLER 39





## DEHLER 39







## DEHLER 39



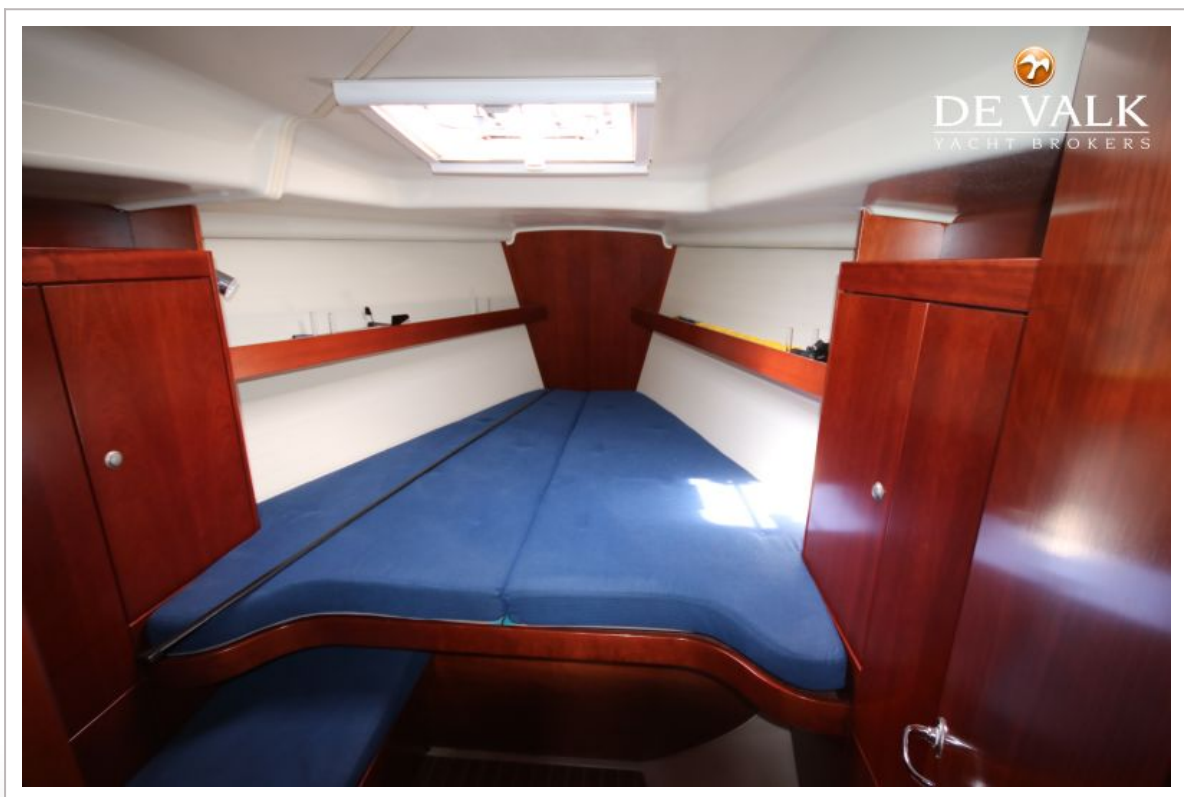
## DEHLER 39





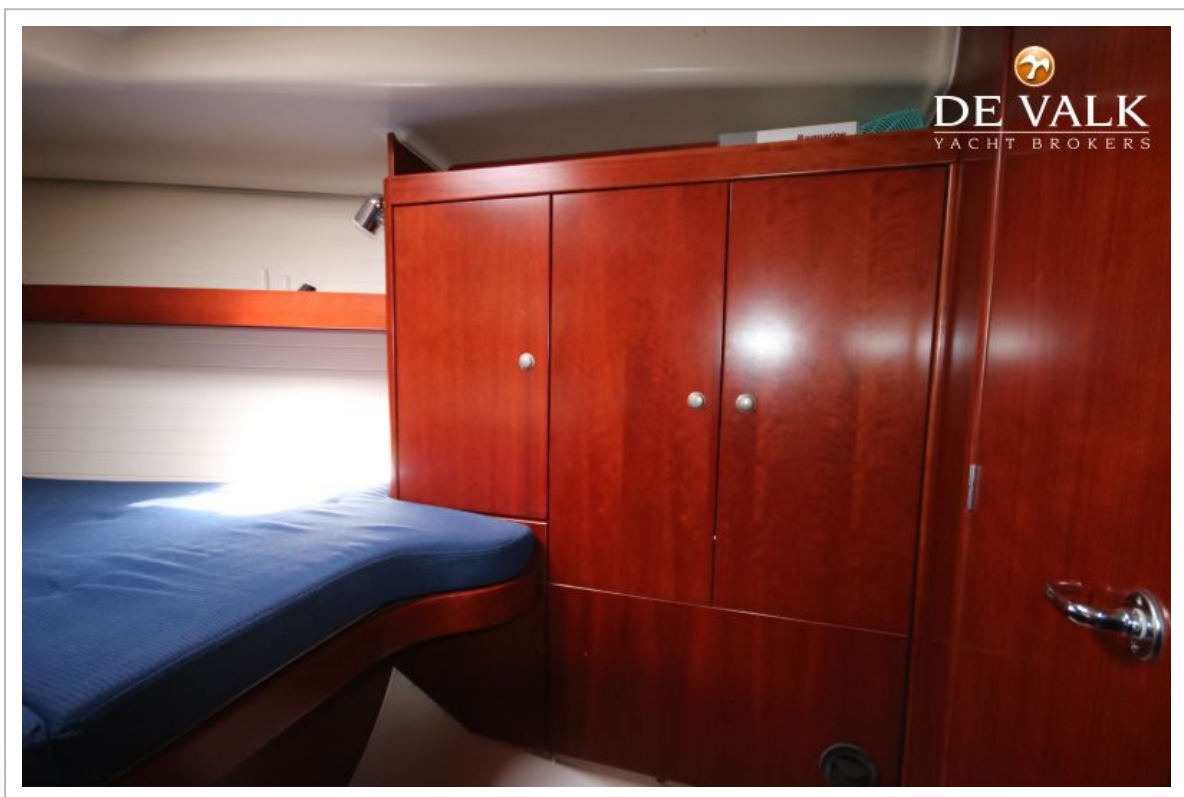
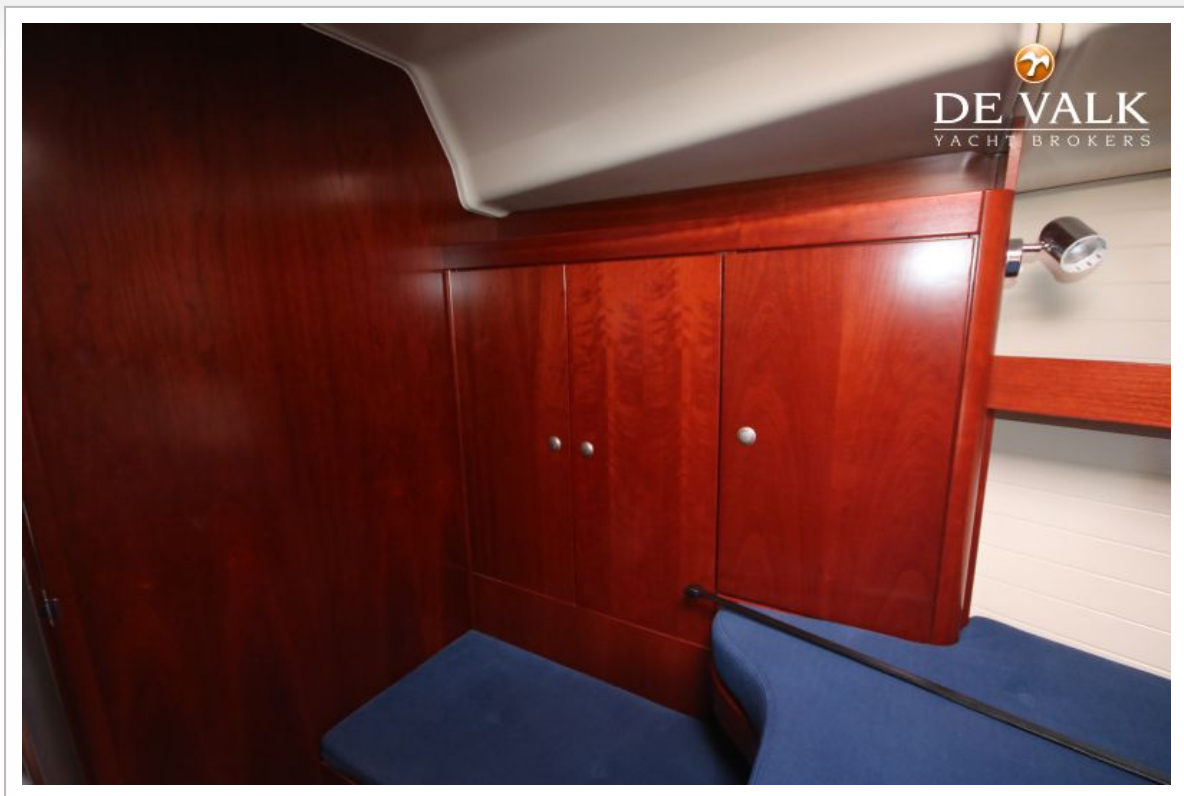
# DEHLER 39







## DEHLER 39



## DEHLER 39



