



HANS CHRISTIAN 48

BROKER'S COMMENTS

This beautiful Hans Christian 48 sailing yacht is designed by Scott Sprague and build and equipped for long distance cruising. 'Kismet' is well equipped with a Yanmar 140 HP diesel engine, Sidepower bowthruster, generator and much more. The owner did a lot of upgrades in recent years. This Hans Christian 48 a fine example of quality and elegance and very suitable for living on board. Make an appointment to see this Hans Christian 48 in Turkey.

Reinier van der Wolf

SPECIFICATIONS

Dimensions	16.50 x 4.40 x 2.20 (m)	Builder	Dutch East Indies
Built	1992	Cabins	2
Material	GRP	Berths	6
Engine(s)	1 x Yanmar 4LH-HTE diesel	Hp/Kw	140.00 (hp), 102.90 (kw)
Asking price	sold (VAT)	Lying	elsewhere / Not at sales office

CONTACT

Sales office	De Valk Monnickendam B.V.	Telephone	+31 (0)299 65 63 50
Address	Hoogedijk 6 1145 PM Katwoude NL	E-mail	monnickendam@devalk.nl

DISCLAIMER

These particulars are given in good faith as supplied but cannot be guaranteed.



GENERAL

Model	HANS CHRISTIAN 48
Type	sailing yacht
LOA (m)	16,50
LWL (m)	14,60
Beam (m)	4,40
Draft (m)	2,20
Headroom (m)	2,20
Year built	1992
Builder	Dutch East Indies
Country	Thailand
Designer	Scott Sprague
Displacement (t)	25
Ballast (tonnes)	lead in GRP
Hull material	GRP
Hull colour	blue
Keel type	long keel
Deck material	GRP
Deck finish	teak
Superstructure deck finish	teak
Cockpit deck finish	teak
Antifouling (year)	2017
Dorades	Gold plated
Deckhatch	Gold plated
Fuel tank (litre)	560 L. total in 3 tanks
Freshwater tank (litre)	GRP 1x 350 L. + 1x 180 L.
Blackwater tank (litre)	GRP 250 L.
Wheel steering	hydraulic Custom Sea Star
Extra info	Finished by Moody's, UK (rigging and electronics). Custom made extended rudder.



ACCOMMODATION

Cabins	2
Berths	6
Interior	teak
Floor	teak and holly
Saloon	Leather upholstery
Headroom saloon (m)	2,20
Heating	central heating Eberspracher (needs service)
Aft Cabin	1x
Galley	yes
Sink	2x gold plated
Cooker	electric Forth-10 3-burner
Oven	yes
Microwave	yes
Fridge	2 x 12V Fridges Frigoboat K 35 F
Hot water system	220V + engine
Water pressure system	electrical
Manual and/or foot pump	Fresh & salt water foot pumps
Crockery	yes
Owners cabin	double bed + single bed
Bathroom	en suite
Toilet	en suite Jabsco Quiet Flush
Toilet system	electric
Wash basin	in the bathroom
Guest cabin 1	single bed 1,5 bed +
Bathroom	en suite
Toilet	en suite Jabsco Quiet Flush
Toilet system	electric
Wash basin	in the bathroom

MACHINERY



No of engines	1
Make	Yanmar
Type	4LH-HTE
HP	140,00
kW	102,90
Fuel	diesel
Year installed	1992
Maximum speed (kn)	12
Cruising speed (kn)	6
Consumption (l/hr)	5
Engine hours	5176
Drive	shaft
Bowthruster	Sidepower SP 285 20HP 24V
Propeller blades	3
Propeller shaft material	Bronze
Electric bilge pump	+ alarm and automatic
Electrical installation	12V/220V
Generator	6,5 KW Northern Lights
Running hours generator	2893 as of 15/10/2015
Batteries	yes
Start battery	1x Freedom Delphi maintenance free
Service battery	5x Gel 200 Ah
Bowthruster battery	4x 50 Ah OPTIMA Blue
Battery monitor	Mastervolt BTM III
Inverter	Victron MultiPlus 12/24 120-50 Inverter (new October 2015)
Shorepower	with cable Verlengkabel +
Extra info	Engine serviced annually. Lewmar Hydraulic commander. Balmar 205 engine alternator. Ideal regulator.

NAVIGATION

Compass	Danforth
---------	----------



Depth sounder/log	B&G
Windset	B&G
VHF	ICOM-603 with GMDSS distress
VHF handheld	Raymarine Ray101E
Autopilot	B&G / Seastar/Hydra
Radar	Furuno
GPS	Furuno
Navtex	Furuno
AIS transponder	AIS True Heading CTRX
EPIRB	ACR Satellite2 406
Navigation lights	yes
Searchlight	2x
Extra info	Sailor SSB radio. SatCom Iridium 9555.

EQUIPMENT

Sprayhood	yes
Cockpit cover	yes
Sun awning	with bag
Boarding ladder	stainless steel 2x
Gangway	yes
Deck shower	yes
Anchor	Beugel
Anchor chain	110 M. 10 MM.
Anchor 2	Bruce 66 + 7m chain and 100m line
Anchor chain	7 M. chain and 100M. Warp
Windlass	hydraulic Lewmar (upgraded in 2012)
Deck wash	yes
Dinghy	AB LAMMINA 9AL (2011)
Outboard	YAMAHA 9.9 Hp (2011)
Outboard support	Crane for hoisting outboard
Life raft	BFA



Life raft (pers)	8
Last life raft survey	October 2011
Lifebuoy	with automatic light
Horn	Passarelle
Fenders	yes
Mooring lines	yes
Spare parts	yes
Tools	yes
Radio-cd player	KENWOOD KDC-4551UB
Clock - barometer	yes
Fire extinguisher	every cabin one 3x
Extinguisher in engine room	yes
Extra info	Complete diving equipment Lifesling with horseshoe Cover for liferaft (2012) Cover for swimming ladder (2012) Cover for dinghy (2011) Cover for outboard (2011) TRIAX UFO Antenna

RIGGING

Rigging	cutter
Standing rigging	Rod 8 mm. s/s
Brand mast	Sparcraft
Material mast	aluminium
Spreaders	yes
Mainsail	Hood 38 m2 (1999)
Mainsail cover	inboom
Genoa	Prisma 83 m2 (2006)
Genoa furler	Hydraulic Reckmann
Gennaker	North
Staysail	Prisma 31 m2 (2006)
Reefing System	main in-boom furling Leisure furl
Backstay adjuster	hydraulic Navtec
Boomvang	hydraulic Navtec
Primary sheet winch	1x Lewmar 43 hydraulic ST main sheet



Secondary sheet winch	Two Lewmar 43 two speed selftailing staysail winches
Genoa sheetwinches	2x Lewmar 66 hydraulic two speed ST
Halyard winches	Lewmar 3x40ST + 1x44ST + 1x30ST
Spi-pole	aluminium Selden
Isolated backstay	yes
Extra info	Boom preventor. Reckman furling (hydraulic).





HANS CHRISTIAN 48



HANS CHRISTIAN 48

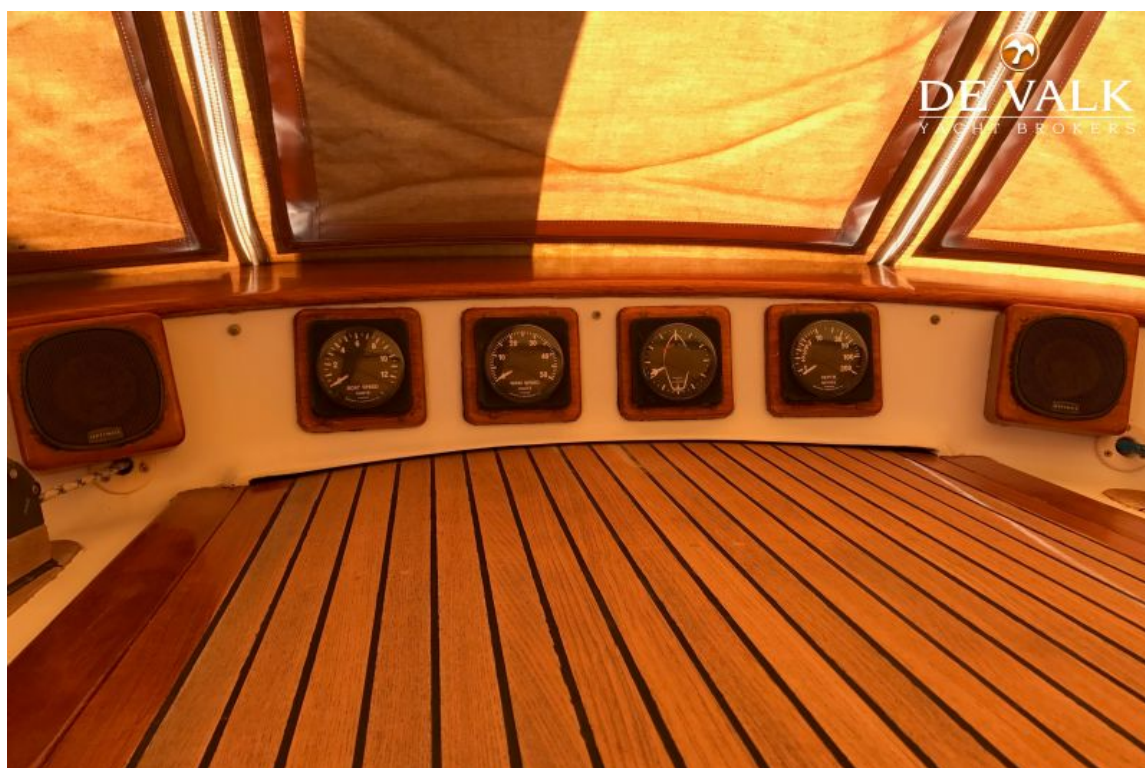




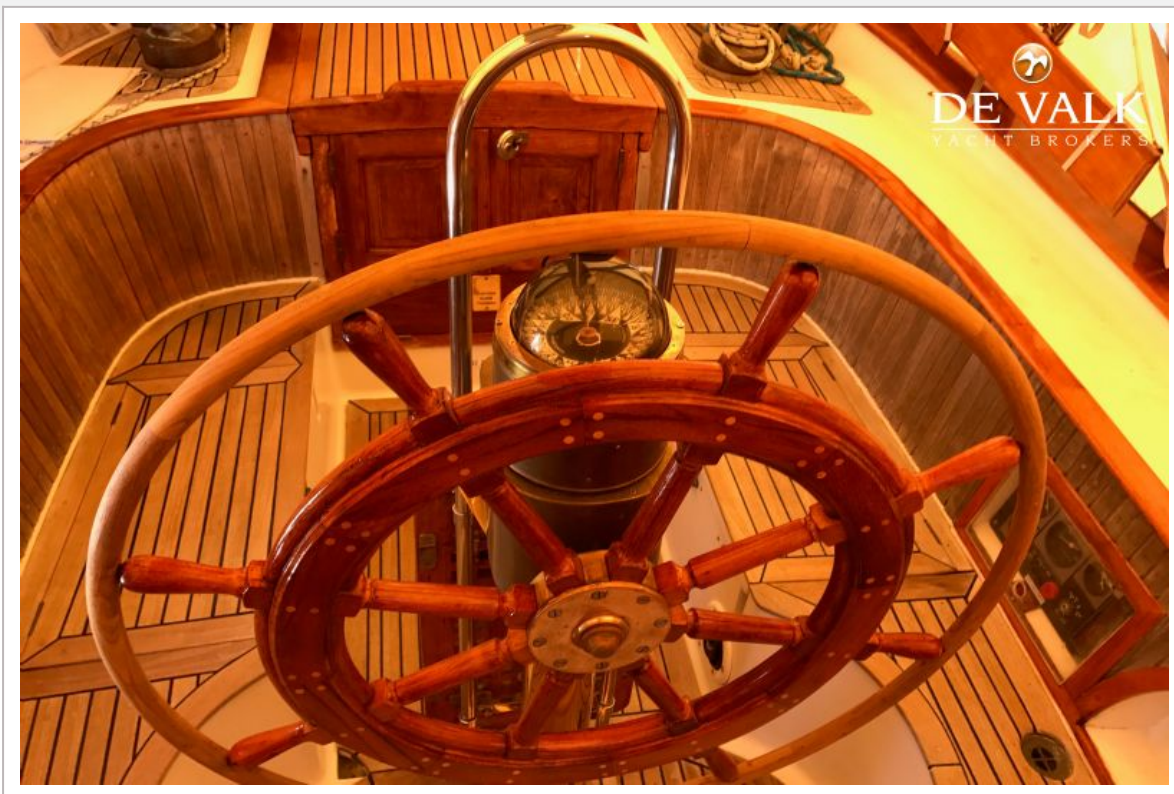
HANS CHRISTIAN 48



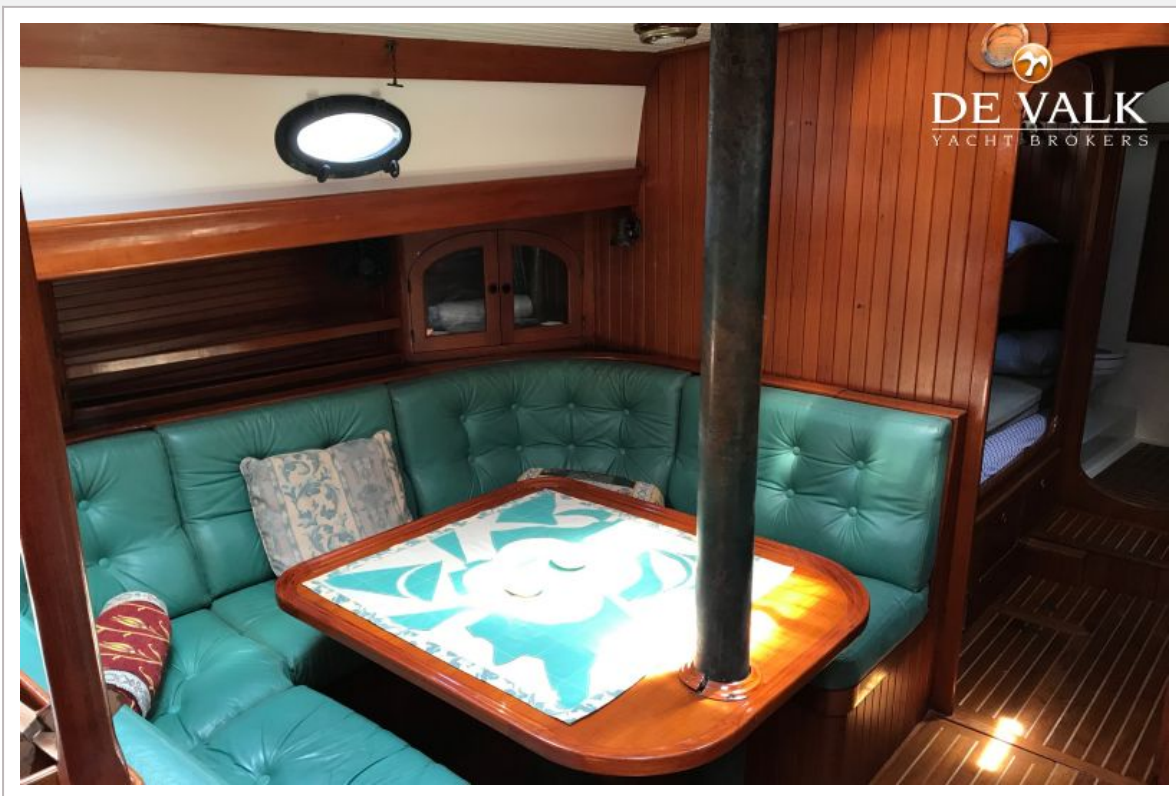
HANS CHRISTIAN 48



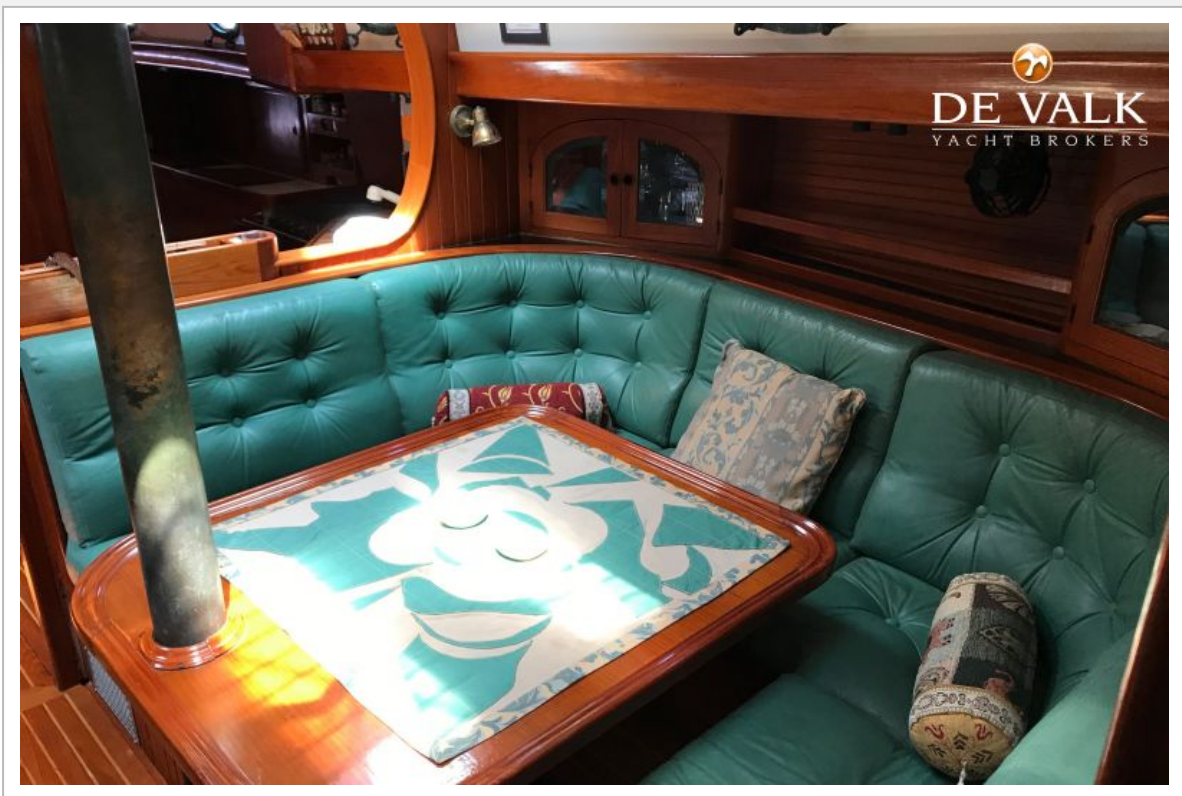
HANS CHRISTIAN 48



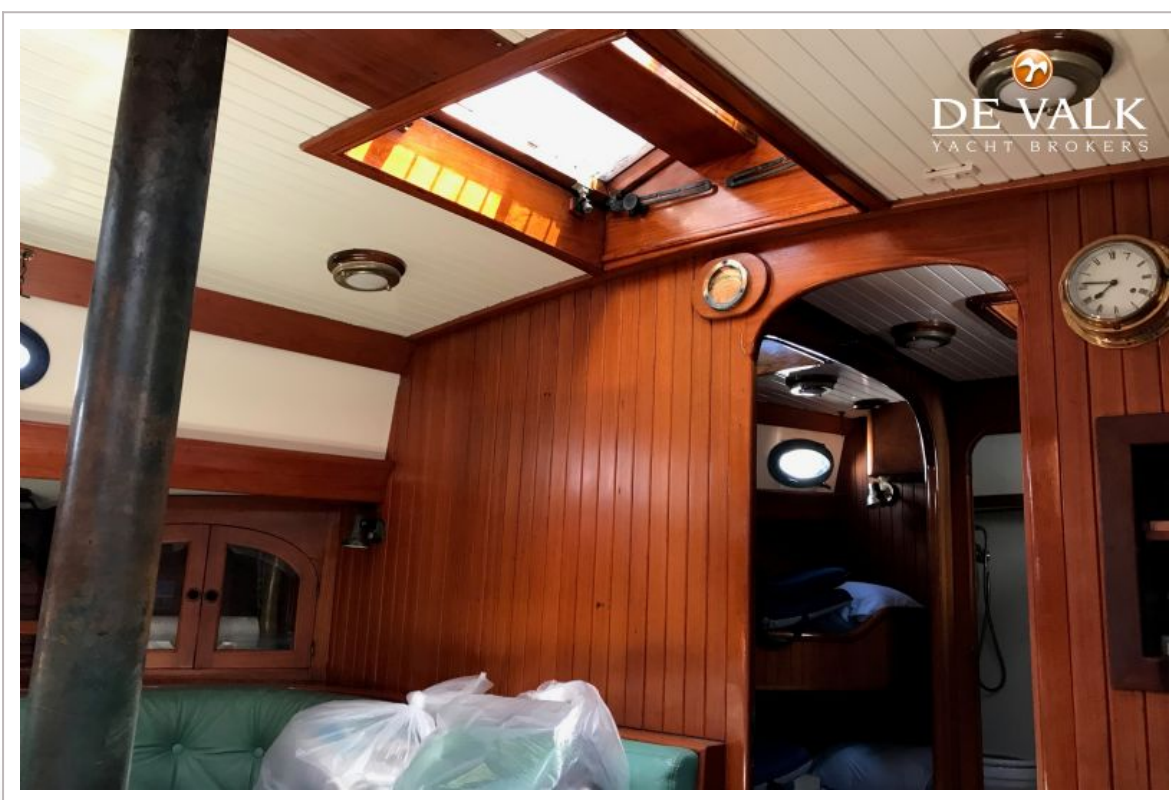
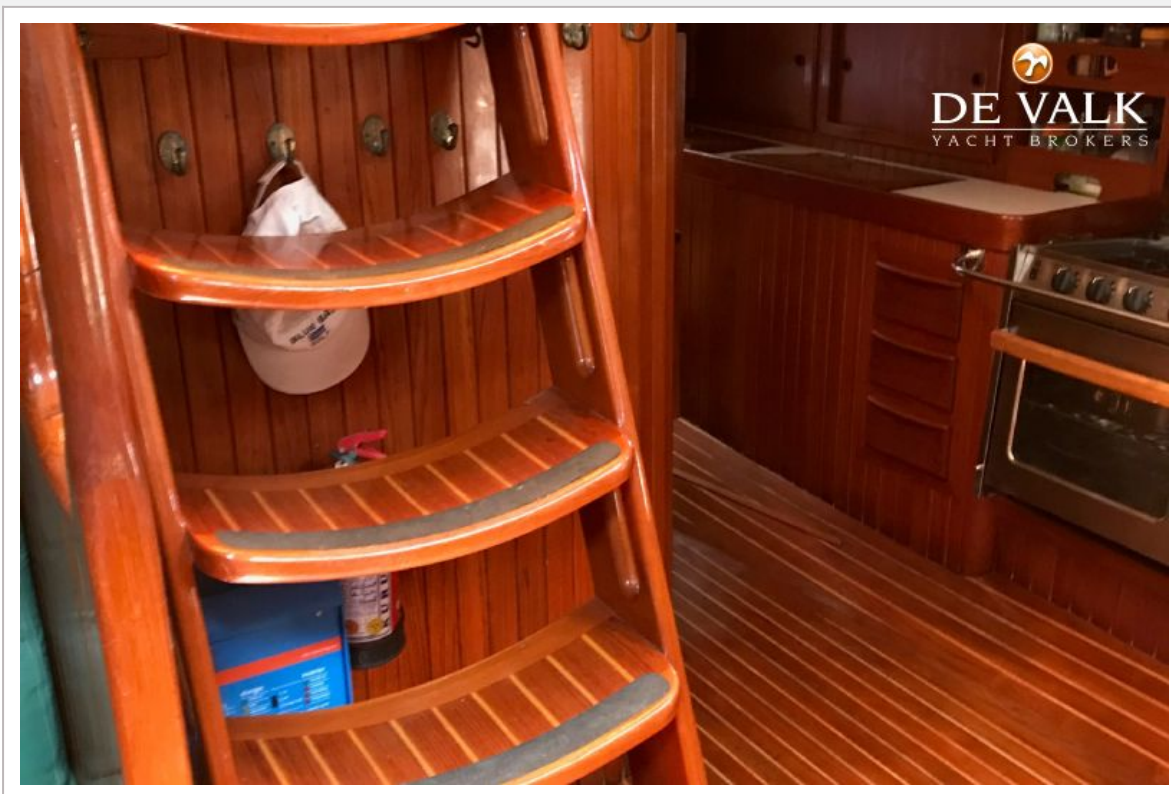
HANS CHRISTIAN 48



HANS CHRISTIAN 48



HANS CHRISTIAN 48



HANS CHRISTIAN 48

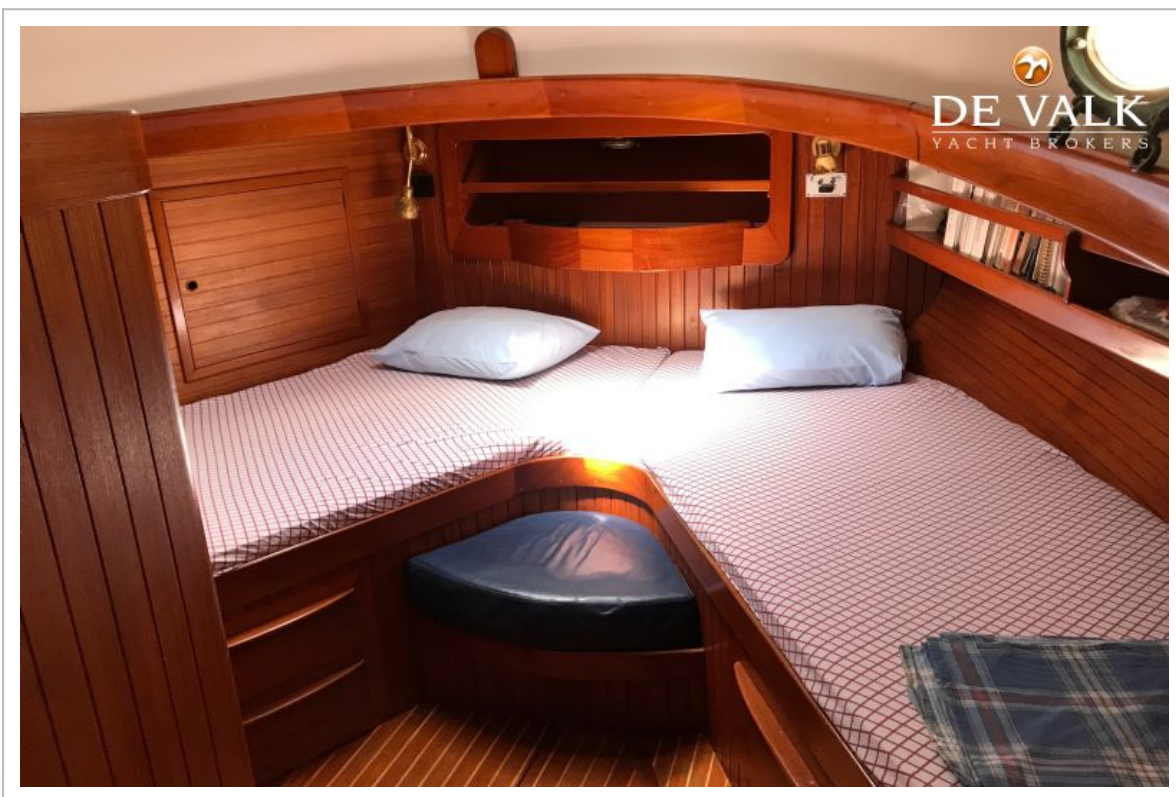




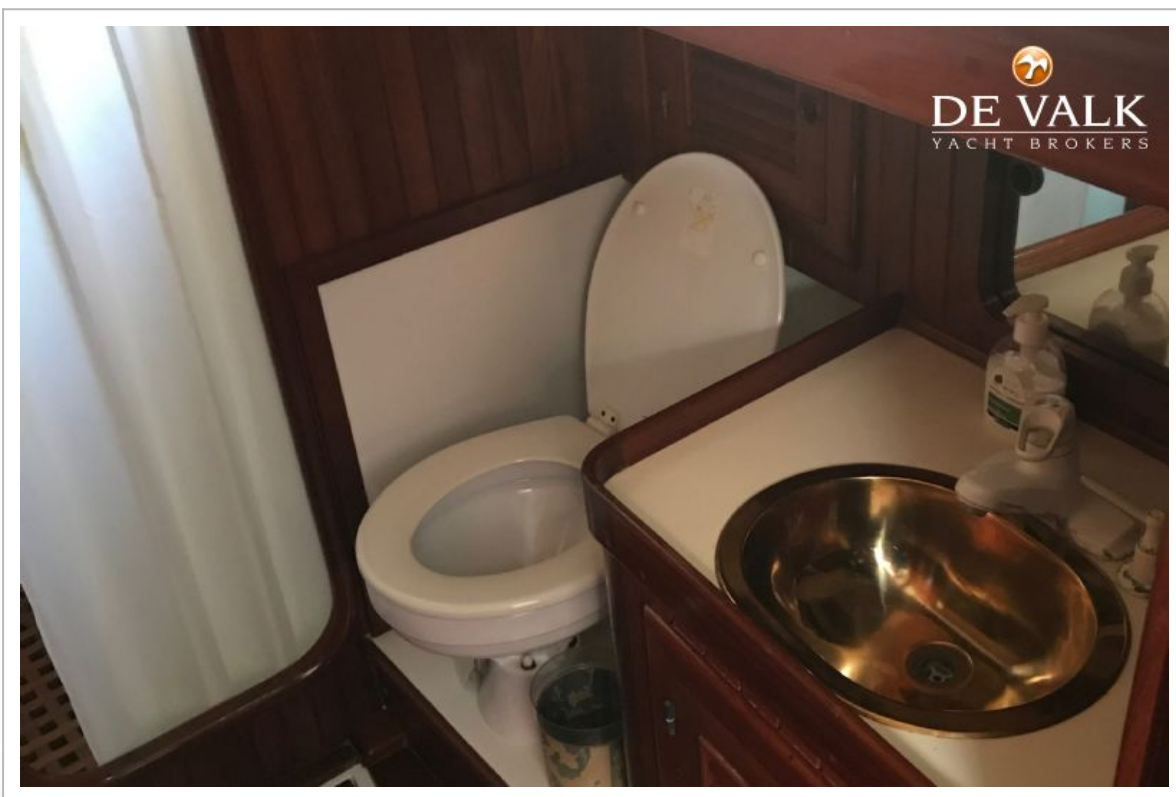
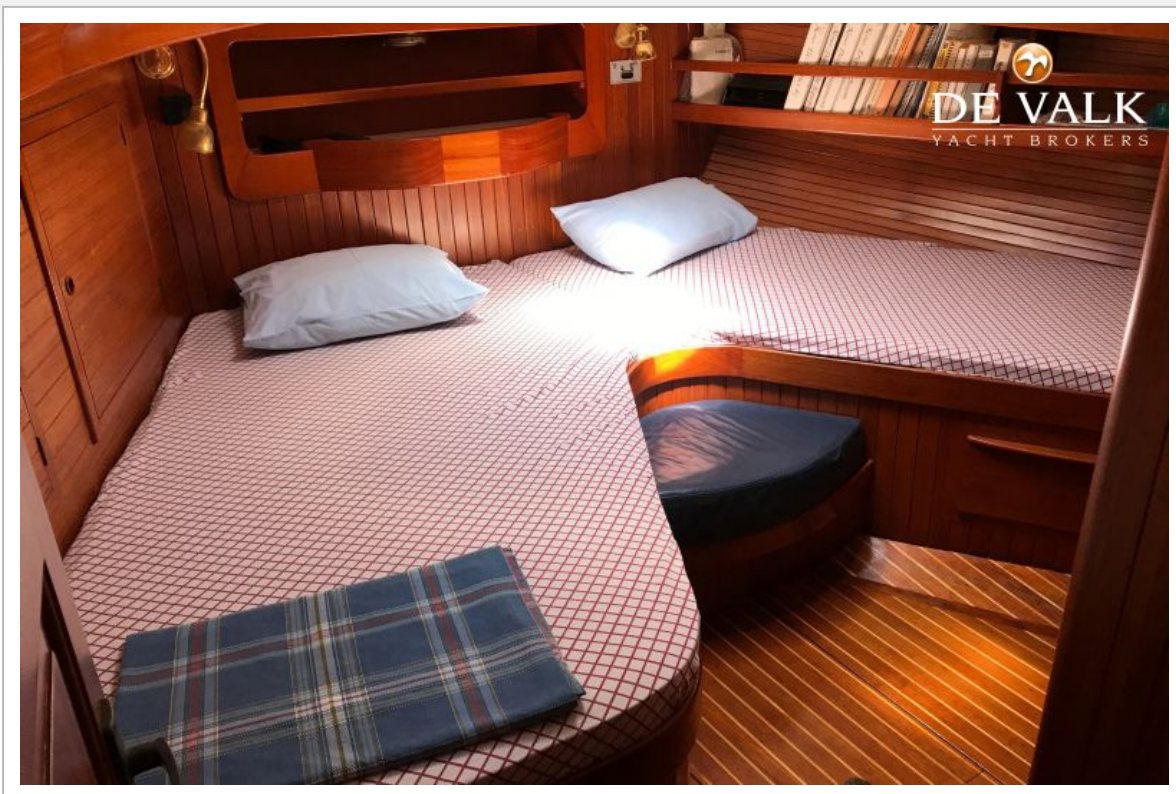
HANS CHRISTIAN 48



HANS CHRISTIAN 48



HANS CHRISTIAN 48



HANS CHRISTIAN 48

