



DE VALK  
YACHT BROKERS



BREEHORN 37



DE VALK  
YACHT BROKERS

BROKERAGE | CHARTER | BERTHS | FINANCE | INSURANCE | YACHT MANAGEMENT

## BROKER'S COMMENTS

A Breehorn 37 sailing yacht is widely known for its sailing characteristics, safety, appearance and seaworthiness. This beautiful yacht, designed by Koopmans, is a balanced model when it comes to liveability, handling and sailing characteristics. The ship's interior is beautifully finished and the yacht has a layout with two cabins, sufficient headroom and lots of storage space. This Breehorn 37 has been carefully maintained and is ready for departure with the new owner!

*Henri van Eelen*

## SPECIFICATIONS

<b>Dimensions</b>	11.20 x 3.54 x 1.90 (m)	<b>Builder</b>	Breehorn Woudsend
<b>Built</b>	1986	<b>Cabins</b>	2
<b>Material</b>	GRP	<b>Berths</b>	6
<b>Engine(s)</b>	1 x Vetus Mitsubishi 4.14 diesel	<b>Hp/Kw</b>	32.00 (hp), 23.00 (kw)
<b>Asking price</b>	sold (VAT )	<b>Lying</b>	contact Hindeloopen

## CONTACT

<b>Sales office</b>	De Valk Hindeloopen B.V.	<b>Telephone</b>	+31 514 52 40 00
<b>Address</b>	Oosterstrand 1 8713 JS Hindeloopen NL	<b>E-mail</b>	hindeloopen@devalk.nl

## DISCLAIMER

These particulars are given in good faith as supplied but cannot be guaranteed.



## GENERAL

Model	BREEHORN 37
Type	sailing yacht
LOA (m)	11,20
LWL (m)	9,00
Beam (m)	3,54
Draft (m)	1,90
Air draft (m)	17,50
Headroom (m)	1,90
Year built	1986
Builder	Breehorn Woudsend
Country	The Netherlands
Designer	Koopmans
Displacement (t)	7
CE norm	NA
Hull material	GRP
Hull colour	blue
Hull shape	round-bilged
Keel type	fin keel
Superstructure material	GRP
Rubbing strake	Hout en RVS
Deck material	GRP
Deck finish	teak 2006
Superstructure deck finish	teak
Cockpit deck finish	teak 2006
Antifouling (year)	2016
Window frame	aluminium
Window material	tempered glass
Deckhatch	yes
Fuel tank (litre)	stainless steel 150L
Fuel tank 2 (litre)	stainless steel 150L



Freshwater tank (litre)	stainless steel 150L 2x
Tiller	yes
Extra info	2015 romp opnieuw geschilderd

## ACCOMMODATION

Cabins	2
Berths	6
Interior	teak
Floor	teak
Open cockpit	yes
Saloon	yes
Headroom saloon (m)	1.90m
Heating	2006 Webasto airtop 3500
Chart table	yes
Aft Cabin	yes
Galley	yes
Countertop	plastic
Sink	stainless steel
Cooker	calor gas 3 pits
Oven	yes
Fridge	Isotherm
Hot water system	220V + engine Isotemp
Water pressure system	electrical
Owners cabin	v-bed
Bed length (m)	2m
Wardrobe	shelves
Bathroom	shared
Toilet	shared
Toilet system	manual Jabsco
Wash basin	at the toilet
Shower	shared



Guest cabin 1	v-bed
Bed length (m)	1.90m
Wardrobe	hanging and shelves
Bathroom	en suite
Toilet	en suite
Toilet system	manual Dometic "Chemisch toilet"
Wash basin	at the toilet
Extra info	2016 nieuwe stoffering banken

## MACHINERY

No of engines	1
Make	Vetus Mitsubishi
Type	4.14
HP	32
kW	23,00
Fuel	diesel
Year installed	1986
Maximum speed (kn)	7,00
Cruising speed (kn)	6,00
Consumption (l/hr)	3,00
Engine cooling system	freshwater heat exchanger
Drive	shaft
Shaft seal	yes
Engine controls	mechanical
Gearbox	mechanical
Engine controls	bowden cable
Exhaust	watercooled
Propeller type	feathering
Propeller blades	2x Variprop
Propeller shaft material	stainless steel
Manual bilge pump	yes



Batteries	4x
Start battery	1x
Service battery	3x
Battery charger	Victron Blue Power 12/15
Inverter	Mastervolt
Wind generator	Aero4gen (niet geïnstalleerd)
Diode battery combiners	yes
Shorepower	

## NAVIGATION

Compass	Plastimo
Depth sounder/log	Tacktick MN100 dual display
Windset	Tacktick MN100 draadloos
VHF	Navman 7100 DSC + extra hoorn
Autopilot	Raymarine ST6001
Radar	RX 10
Plotter/GPS	Geonav 6 Sunshine
Electronic chart(s)	Navionics
AIS transponder	2016 Vespermarine watchmate

## EQUIPMENT

Fixed windscreen	yes
Sprayhood	2010
Boarding ladder	aluminum Hout + rvs
Anchor	Bruce
Anchor chain	30m
Windlass	mechanical
Capstan	yes
Outboard support	yes
Sea railing	wire
Grab rail (superstructure)	teak



Pulpit	yes
Rope cutter	yes
Mooring lines	yes
Radio-cd player	yes
Speakers in salon	yes

## RIGGING

Rigging	sloop
Standing rigging	wire
Brand mast	
Material mast	aluminium
Spreaders	yes
Mainsail	2006 Quantum cruising 3 radial met 3 raffen
Mainsail cover	yes
Fully battened mainsail	yes
Cutterstay	yes
Furling boom	yes
High aspect	De Vries
Genoa	2006 Quantum cruising 3 radial met UV strook
Genoa furler	2006 Furlex 308S
Genoa cover	+ hoes voorlijk
Gennaker	2006 Momentum Aspin
Staysail	yes
Genoa staysail	yes
Removable innerforestay	yes
Stormjib	yes
Reefing System	quick-one-line-reefing
Backstay adjuster	mechanical
Boomvang	tackle
Primary sheet winch	2x Barbarossa ST48
Secondary sheet winch	2x Barbaraossa ST24



**Halyard winches**

2x ST40 1x ST16 1x extra

**Reefing winch**

yes

**Spi-pole**

aluminium





# BREEHORN 37



# BREEHORN 37





# BREEHORN 37



# BREEHORN 37

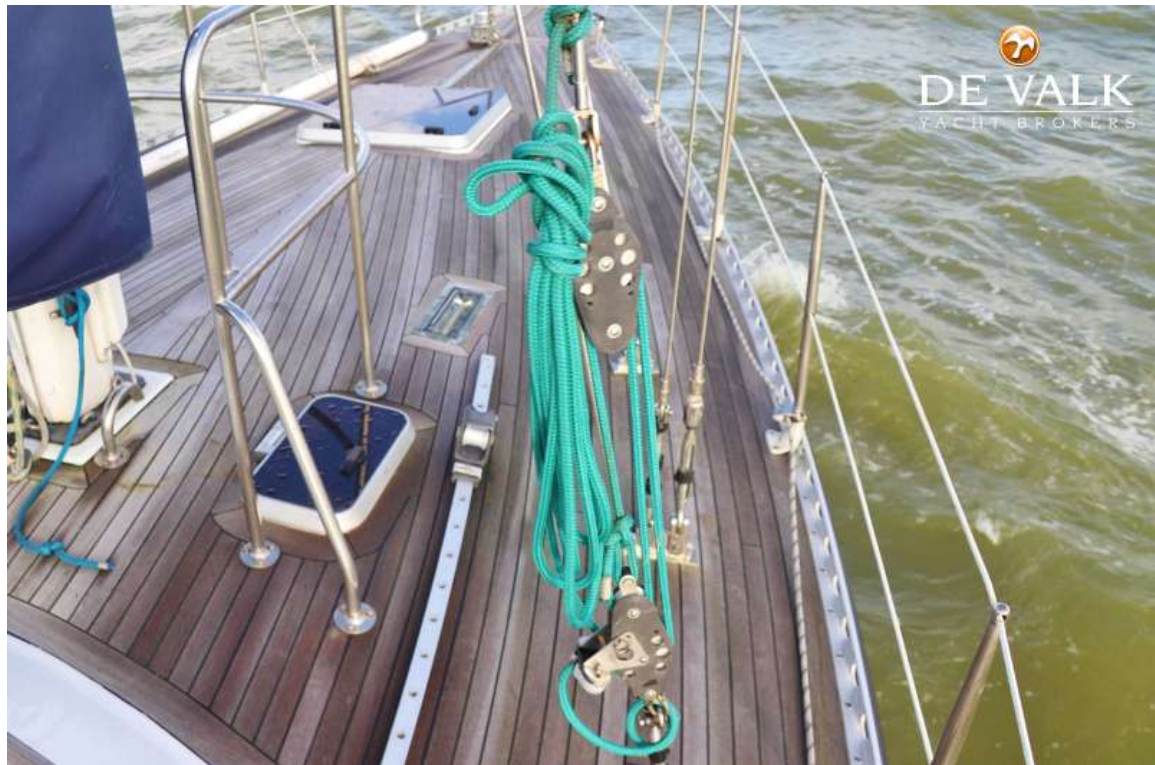




# BREEHORN 37



# BREEHORN 37







# BREEHORN 37





## BREEHORN 37



## BREEHORN 37

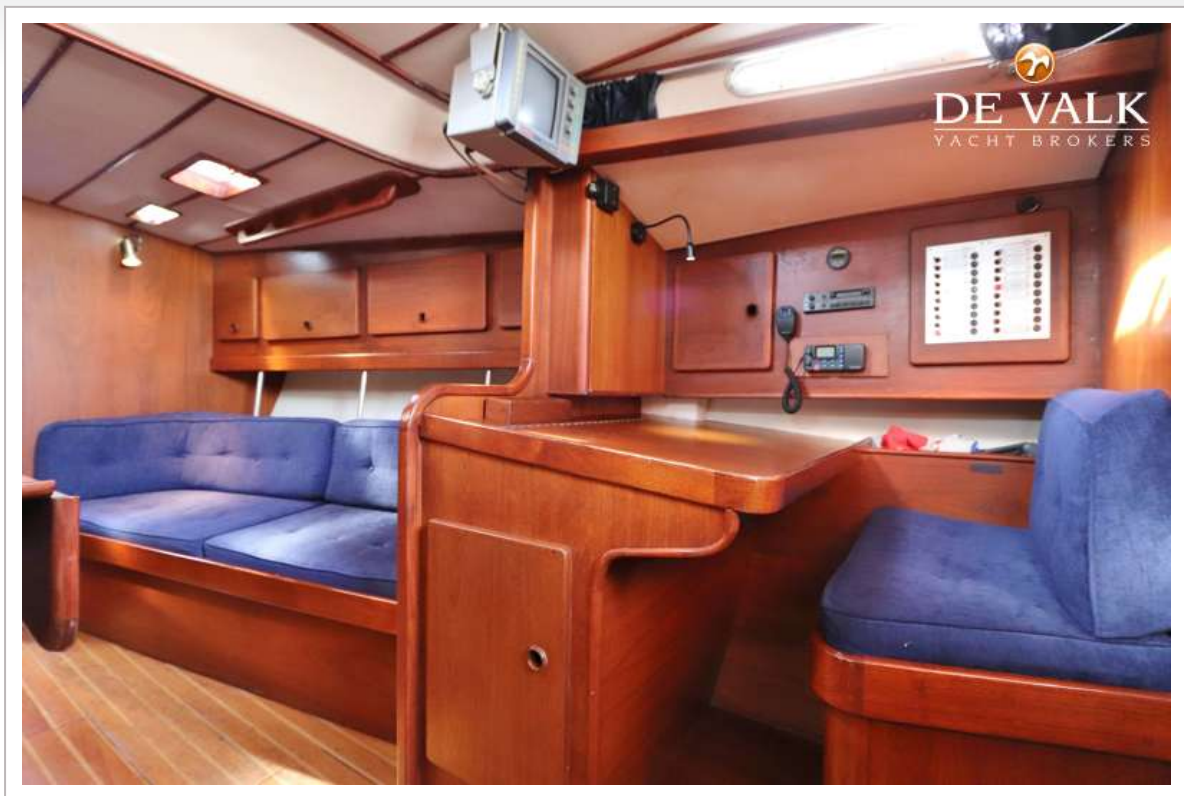




# BREEHORN 37

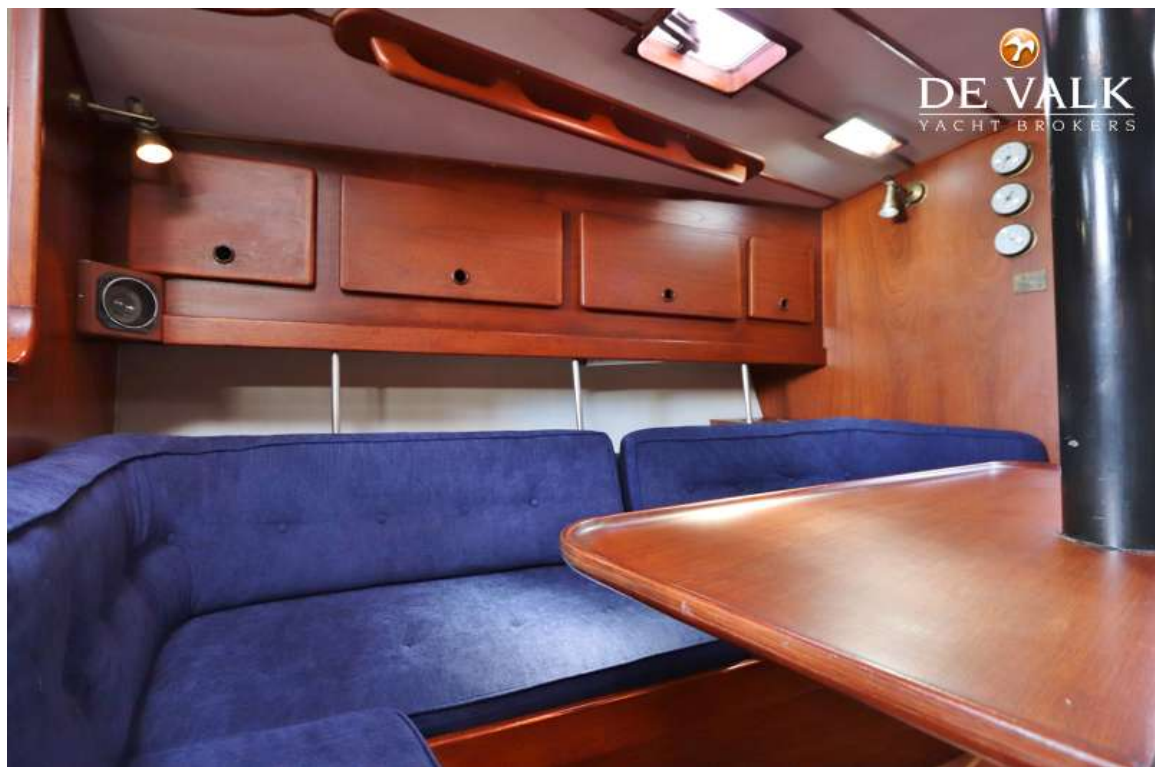
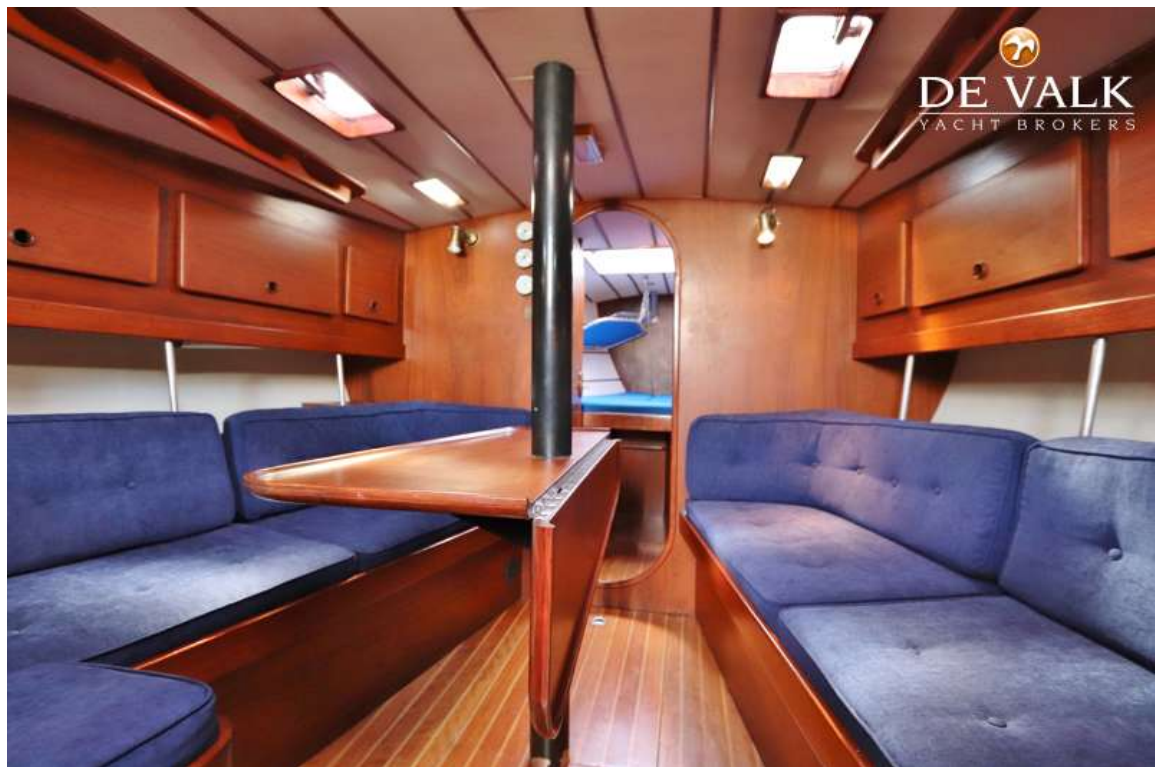


# BREEHORN 37





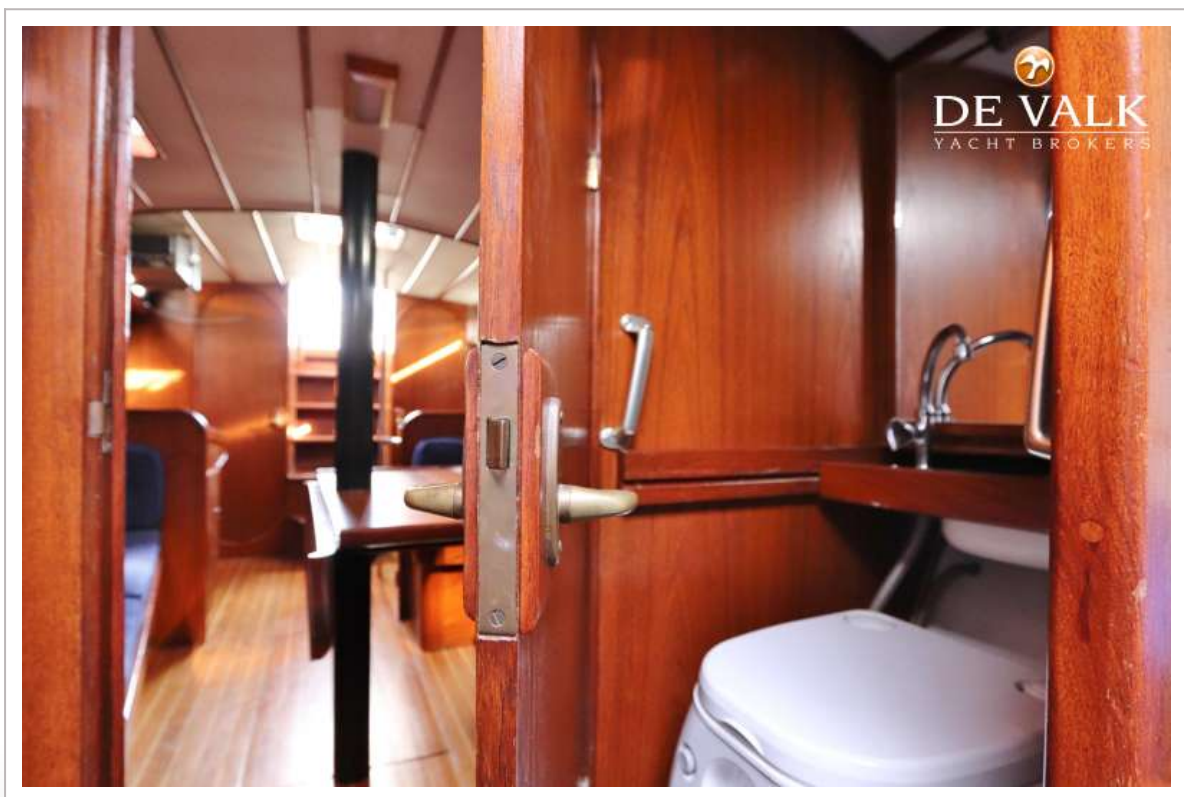
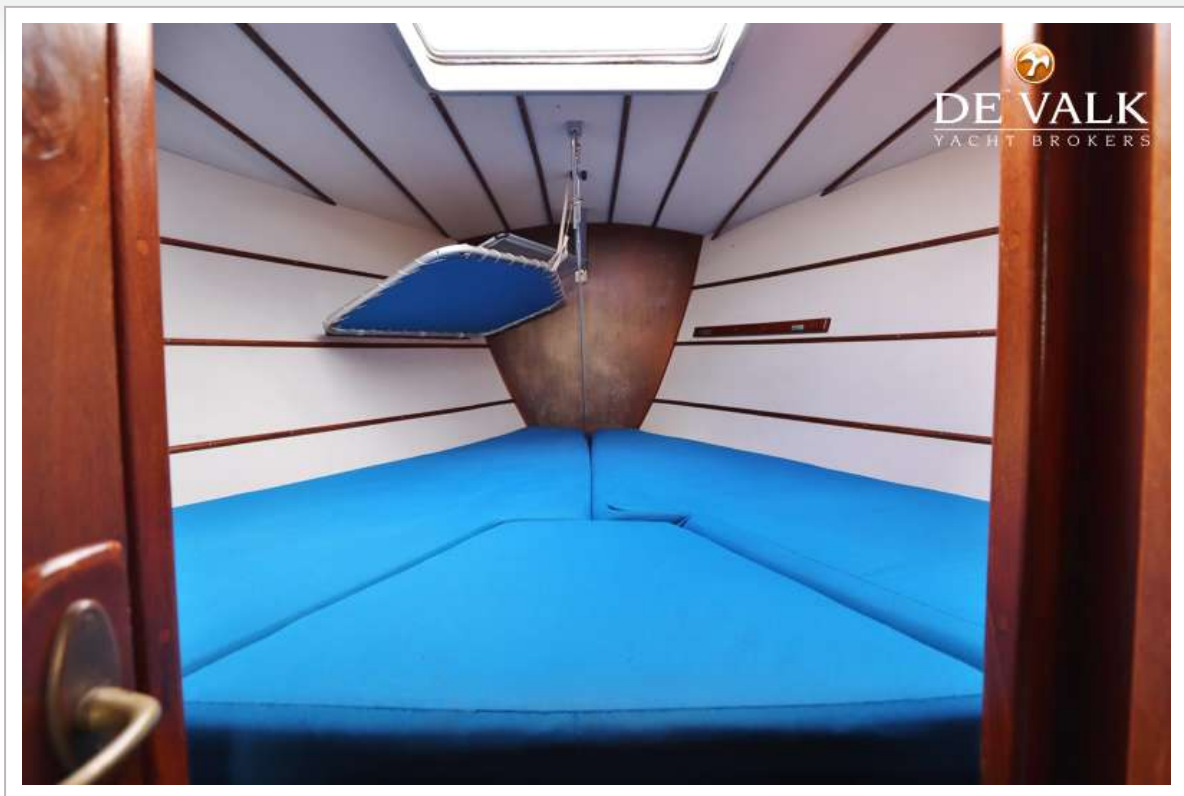
## BREEHORN 37



# BREEHORN 37





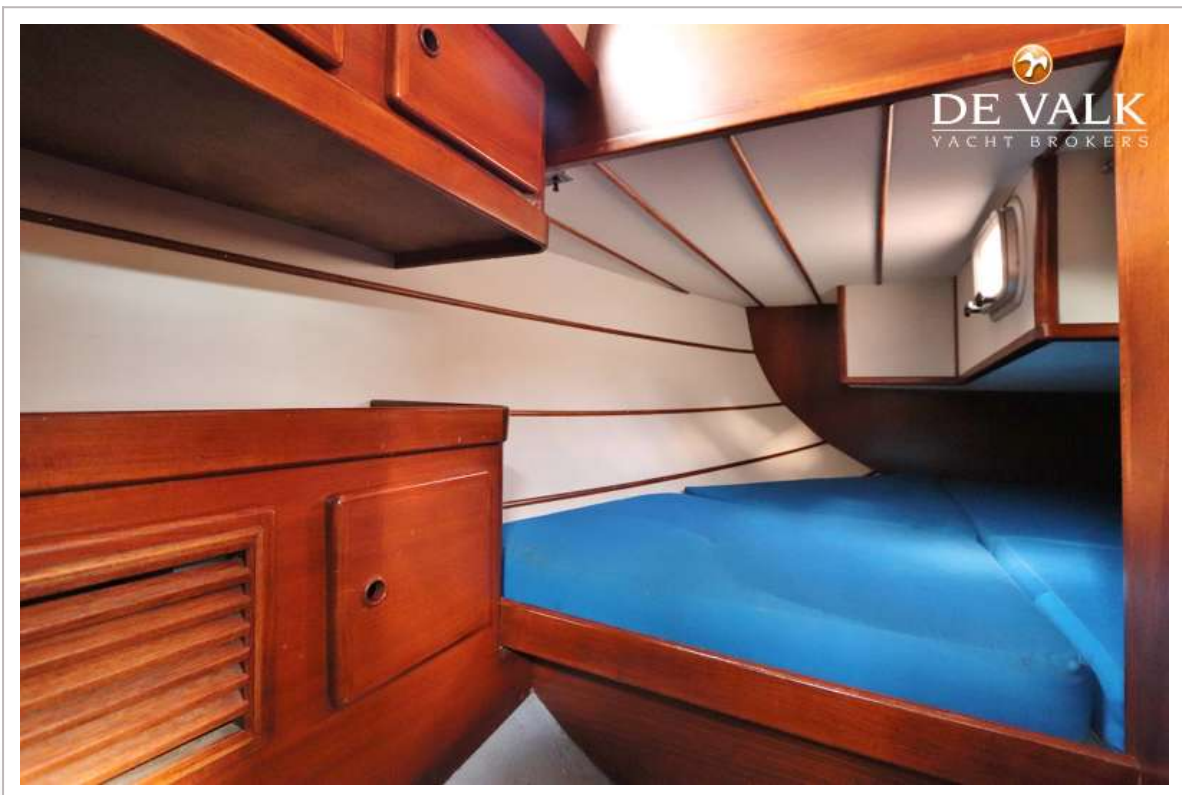
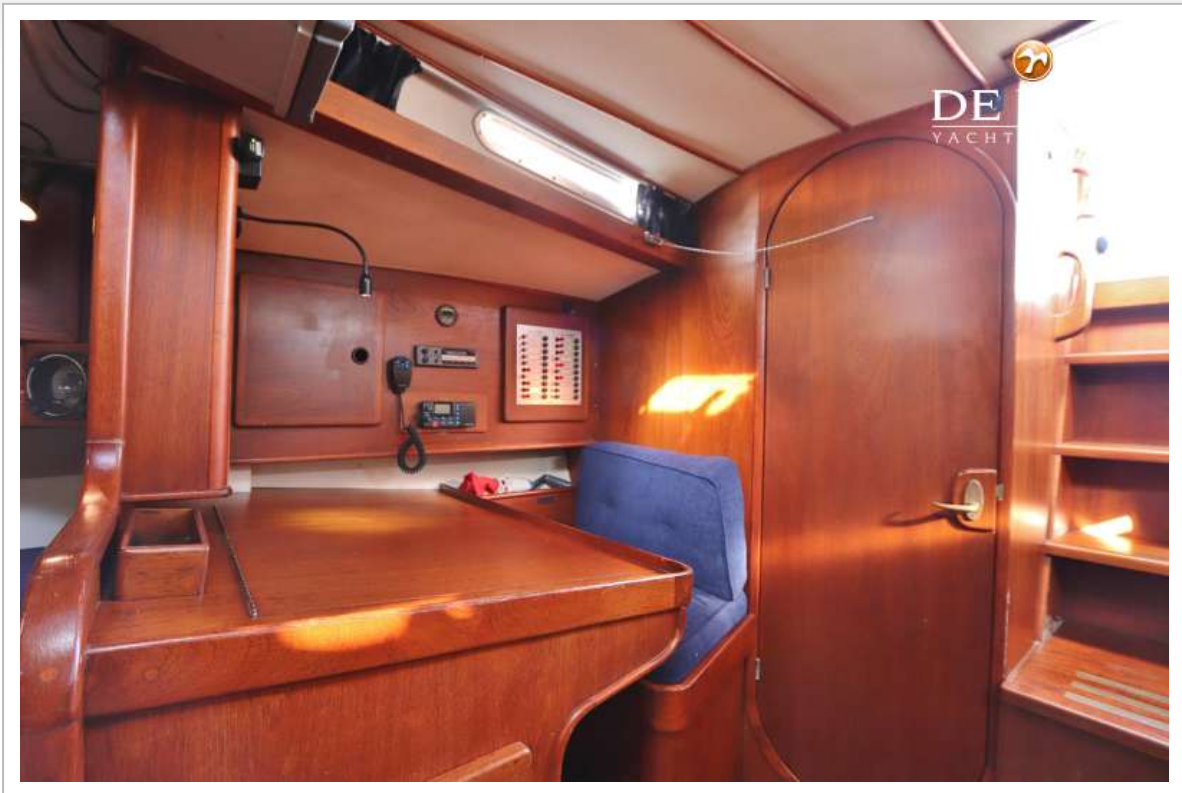


## BREEHORN 37





# BREEHORN 37



# BREEHORN 37





