



DE VALK  
YACHT BROKERS

DANSAIL 45



DE VALK  
YACHT BROKERS

BROKERAGE | CHARTER | BERTHS | FINANCE | INSURANCE | YACHT MANAGEMENT

## BROKER'S COMMENTS

The Dansail 45 is an aluminum sailing yacht of 2004 build to the highest standards. She is a fast sailing boat and a real „go anywhere“ ready to circumnavigate or look for icebears. She is complete with a Yanmar 55HP diesel engine, heating and a bow thruster. In 2016 the current owner invested a lot in 'Thara'. During this renovation she has got new windows, led lighting, antifouling, self tacking jib installation, backstay adjuster, bow thruster, radar, AIS, batteries, the shaft seal is replaced and many more. All that has been renewed you can find in the brochure.

*Reinier van der Wolf*

## SPECIFICATIONS

<b>Dimensions</b>	13.70 x 4.35 x 2.20 (m)	<b>Builder</b>	Svendborg Yachtservice
<b>Built</b>	2003	<b>Cabins</b>	3
<b>Material</b>	Aluminium	<b>Berths</b>	6
<b>Engine(s)</b>	1 x Yanmar 4JH3E diesel	<b>Hp/Kw</b>	55.00 (hp), 40.42 (kw)
<b>Asking price</b>	sold (VAT )	<b>Lying</b>	elsewhere / Not at sales office

## CONTACT

<b>Sales office</b>	De Valk Monnickendam B.V.	<b>Telephone</b>	+31 (0)299 65 63 50
<b>Address</b>	Hoogedijk 6 1145 PM Katwoude NL	<b>E-mail</b>	monnickendam@devalk.nl

## DISCLAIMER

These particulars are given in good faith as supplied but cannot be guaranteed.



## GENERAL

Model	DANSAIL 45
Type	sailing yacht
LOA (m)	13,70
LWL (m)	13,25
Beam (m)	4,35
Draft (m)	2,20
Air draft (m)	23,00
Headroom (m)	2,00
Year built	2003
Launched	2004
Builder	Svendborg Yachtservice
Country	Denmark
Designer	CDE Danish Marine Design apS
Displacement (t)	10,7
Ballast (tonnes)	lead in aluminum
Hull material	aluminium
Hull colour	grey
Hull thickness (mm)	4
Hull shape	round-bilged
Keel type	fin keel
Superstructure material	aluminium
Superstructure (mm)	4
Deck plate thickness (mm)	4
Deck material	aluminium
Deck finish	non-skid paint
Superstructure deck finish	paint
Cockpit deck finish	paint
Antifouling (year)	2020
Window frame	aluminium
Window material	perspex 2016



<b>Portholes</b>	aluminium
<b>Insulation</b>	foam 6 cm.
<b>Radar arch</b>	non collapsible
<b>Fuel tank (litre)</b>	680
<b>Level indicator (fuel tank)</b>	yes
<b>Freshwater tank (litre)</b>	700
<b>Level indicator (freshwater)</b>	yes
<b>Blackwater tank (litre)</b>	80
<b>Level indicator (blackwater)</b>	yes
<b>Blackwater tank extraction</b>	yes
<b>Wheel steering</b>	cable steering 2x Jefa
<b>Emergency tiller</b>	seperate emergency rudder
<b>More info on hull</b>	In 2019 the hull and hull below the waterline has been sandblasted and provided with a complete new paint system. On deck there are few superficial corrosion points. These can be eliminated without much effort.
<b>Extra info</b>	dieseltanks and fuel injector have been cleaned (2016).

## ACCOMMODATION

<b>Cabins</b>	3
<b>Berths</b>	6
<b>Interior</b>	mahogany
<b>Floor</b>	anti-slip
<b>Deck saloon</b>	yes
<b>Saloon</b>	Upholsty Alcantara beige
<b>Headroom saloon (m)</b>	between 1.95 and 2.3 M.
<b>Heating</b>	diesel ducted hot air
<b>Chart table</b>	yes
<b>Aft Cabin</b>	yes
<b>Convertible berth</b>	yes
<b>Galley</b>	yes
<b>Countertop</b>	plastic



Sink	stainless steel
Cooker	calor gas 2-burner
Oven	yes
Microwave/oven combi	yes
Fridge	Cooling box
Freezer	yes
Hot water system	220V + engine
Water pressure system	electrical Pump (2016)
Kettle	yes
Coffee maker	Jura (2018)
Crockery	yes
Owners cabin	double bed
Bed length (m)	2,00
Wardrobe	hanging/drawers/shelves
Bathroom	shared
Toilet	shared
Toilet system	yes
Wash basin	in the bathroom
Shower	shared
Guest cabin 1	double bed
Bed length (m)	2,00
Wardrobe	hanging and shelves
Bathroom	shared
Toilet	shared
Toilet system	yes
Wash basin	in the bathroom
Shower	shared
Extra info	Large cockpit locker on starboard, can possibly be used as second aft cabin, accessible from the cockpit. In 2016 Replacement of the entire interior lighting to LED.

## MACHINERY



<b>No of engines</b>	1
<b>Make</b>	Yanmar
<b>Type</b>	4JH3E
<b>HP</b>	55
<b>kW</b>	40.42
<b>Fuel</b>	diesel
<b>Year installed</b>	2004
<b>Maximum speed (kn)</b>	9
<b>Cruising speed (kn)</b>	7
<b>Consumption (l/hr)</b>	4
<b>Engine hours</b>	2400
<b>Engine cooling system</b>	freshwater heat exchanger
<b>Drive</b>	shaft
<b>Shaft seal</b>	2016
<b>Engine controls</b>	mechanical
<b>Gearbox</b>	mechanical
<b>Bowthruster</b>	electric Sidepower retract (2016)
<b>Gearbox</b>	mechanical
<b>Exhaust</b>	watercooled
<b>Propeller type</b>	feathering Gori
<b>Propeller blades</b>	3
<b>Propeller shaft material</b>	stainless steel
<b>Shaft lubrication</b>	water
<b>Manual bilge pump</b>	yes
<b>Electric bilge pump</b>	yes
<b>Generator</b>	wet exhaust 3 kW
<b>Batteries</b>	yes
<b>Start battery</b>	1x AGM 48Ah (2016) 3x AGM 220Ah (2022)
<b>Service battery</b>	yes
<b>Bowthruster battery</b>	2x 80Ah (2016)
<b>Battery monitor</b>	yes
<b>Battery charger</b>	+ B2B charger for bow thruster Victron Combi Plus



<b>Inverter</b>	Victron Combi Plus
<b>Battery charger/inverter</b>	Victron Combi Plus
<b>Wind generator</b>	Masterwind
<b>Shorepower</b>	with cable
<b>Extra info</b>	In 2016: engine maintenance for Yanmar and Honda.
<b>Extra info</b>	Victron Insulation transformer

## NAVIGATION

<b>Compass</b>	yes
<b>Electric compass</b>	NKE
<b>Depth sounder</b>	NKE
<b>Log</b>	NKE
<b>Windset</b>	NKE
<b>VHF</b>	yes
<b>VHF handheld</b>	yes
<b>Autopilot</b>	NKE
<b>Rudder angle indicator</b>	NKE
<b>Radar</b>	New in 2016 interlaced with plotters Raymarine
<b>GPS</b>	Furuno
<b>Plotter</b>	Raymarine
<b>Navtex</b>	Mohrer Wetterbox
<b>Electronic chart(s)</b>	Navionics
<b>AIS receiver</b>	yes
<b>AIS transponder</b>	With own combination antenna (2016)
<b>Radio receiver</b>	yes
<b>Transmitter</b>	yes
<b>EPIRB</b>	yes
<b>Personal MOB transmitter</b>	NKE



## Extra info

In 2016: Partial renewal of the NKE multifunctional displays in the cockpit. Renewal of the radar and conversion to digital radar, working with the plotter and radar overlay. NKE board electronics with multifunctional displays, (partly renewed in 2016), electromagnetic log and gyropilot-AP Iridium Go with antenna

## EQUIPMENT

Sprayhood with grab rail	2014
Cockpit cover	yes
Dodger	yes
Bimini	with Sunfilterscreens
Cockpit cushions	yes
Cockpit table	yes
Bathing platform	yes
Boarding ladder	stainless steel
Transom door	yes
Bow ladder	yes
Deck shower	yes
Anchor	Delta 25 kg.
Anchor chain	80 m. 8 mm.
Anchor 2	Delta 20 kg.
Other ground tackle	1x rear anchor (aluminum plate anchor with lead chain) + Cobra anchor 15 kg.
Windlass	electrical Lewmar remote controllable from the cockpit
Dinghy	rigid hull 2,9m Hypalon m. Jockeysitz und Steuerung (2016)
Outboard	Honda 8 HP with E-Start and remote control
Davits	stainless steel
Davits controls	manual
Deck crane	manual
Sea railing	yes
Grab rail (superstructure)	stainless steel
Pushpit	S/S





Pulpit	S/S
Life raft	container
Life raft (pers)	6
Last life raft survey	2016
Lifejackets	yes
Lifebuoy	yes
Danbuoy	yes
Safety lines on deck	yes
Horn	electric
Radar reflector	yes
Fenders	yes
Mooring lines	yes
Spare parts	yes
TV	24 inch Flatscreen
TV receiver	yes
Satellite	El. Tracking SAT TV antenna
Radio-cd player	2x (2016)
DVD player	yes
Speakers in salon	yes
Speakers in cabin	yes
Clock - barometer	yes
Fire extinguisher	yes
Extra info	100m rope 12mm, on new role Liros GripProtect 10mm new on roll In 2016 Installation of the retractable flat-screen TV and the satellite antenna. Installation of the caravan weatherbox, connection to backstay. Replacement and renewal of the superstructure glazing in 8mm. Partial re-control of the traps in Liros D-Pro 10mm. Preparation of the emergency riser insert and emergency rifle.
Extra info	NKE MOB-System MOB Motor Stop

## RIGGING

Rigging	fractional with backstays Kutterstag wegnehmbar
---------	---



<b>Standing rigging</b>	Rod Check 2016
<b>Brand mast</b>	yes
<b>Material mast</b>	aluminium
<b>Mainsail</b>	Hydranet Radial (2018)
<b>Mainsail cover</b>	yes
<b>Battcars</b>	Ronstan (2016)
<b>Fully battened mainsail</b>	yes
<b>Jib</b>	Hydranet radial (2018)
<b>Genoa furler</b>	Harken
<b>Gennaker</b>	147qm (2004) Quantum, Top down
<b>Removable innerforestay</b>	yes
<b>Stormjib</b>	(2004) Quantum Dacron
<b>Self tacking jib installation</b>	Harken
<b>Reefing System</b>	3-reefs, Quick line reefing
<b>Backstay adjuster</b>	hydraulic Lewmar (2016)
<b>Boomvang</b>	mechanical and tackle
<b>Primary sheet winch</b>	2x Andersen 58ST
<b>Secondary sheet winch</b>	2x Andersen 45ST, one electric
<b>Winchcovers</b>	yes
<b>Spi-pole</b>	aluminium
<b>Isolated backstay</b>	yes
<b>Extra info</b>	In 2016 Self tacking jib installation mounted. Installation of self-reversing jib rail etc. Conversion of the working jib to the S-jib. Renewal of the screw shaft and stuffing box.





















# DANSAIL 45





# DANSAIL 45







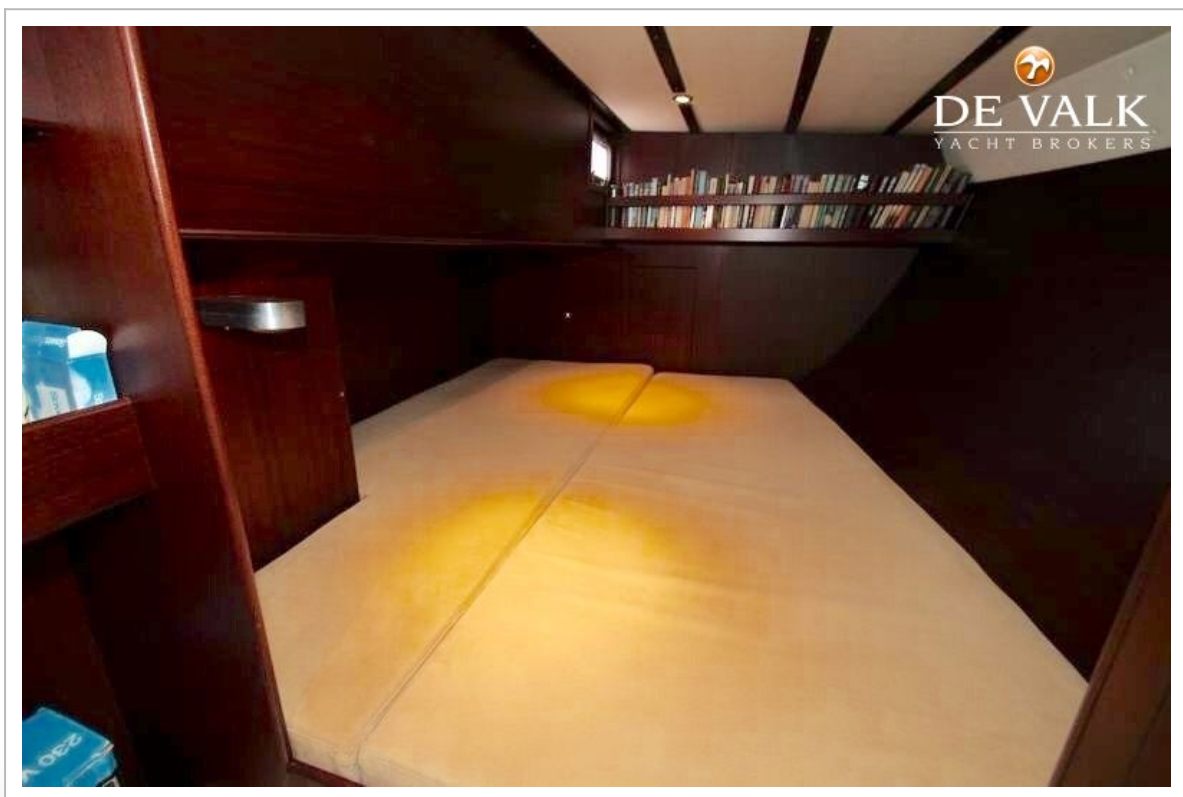
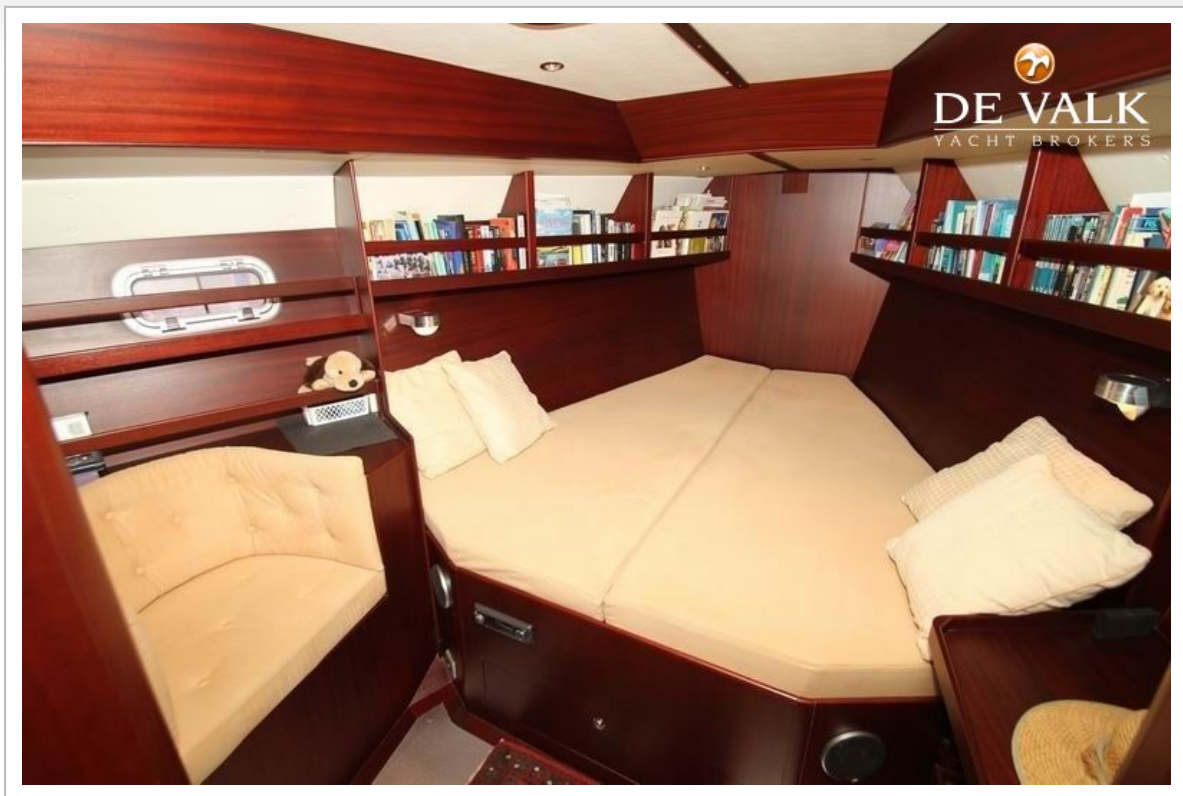






# DANSAIL 45











# DANSAIL 45

