



DE VALK
YACHT BROKERS



ALMTRAWLER 1320 AD



DE VALK
YACHT BROKERS

ALMTRAWLER 1320 AD

BROKER'S COMMENTS

"Majoni" is the example of a high dutch quality build motor trawler. She is a spacious motor yacht suitable as a live-a-board and for long cruises, Equipped with a Kabola central heating, air-condition system, bow- and stern thruster, two spud poles for very easy mooring and anchoring.

Reinier van der Wolf

SPECIFICATIONS

| | | | |
|---------------------|----------------------------|----------------|-----------------------------|
| Dimensions | 14.20 x 4.50 x 1.30 (m) | Builder | Jachtbouw de Alm, Werkendam |
| Built | 1999 | Cabins | 3 |
| Material | Steel | Berths | 6 |
| Engine(s) | 1 x Perkins M225T.1 diesel | Hp/Kw | 225.00 (hp), 165.38 (kw) |
| Asking price | sold (VAT) | Lying | at sales office |

CONTACT

| | | | |
|---------------------|---------------------------------------|------------------|------------------------|
| Sales office | De Valk Monnickendam B.V. | Telephone | +31 (0)299 65 63 50 |
| Address | Hoogedijk 6 1145 PM Katwoude NL | E-mail | monnickendam@devalk.nl |

DISCLAIMER

These particulars are given in good faith as supplied but cannot be guaranteed.



GENERAL

| | |
|----------------------------|-----------------------------|
| Model | ALMTRAWLER 1320 AD |
| Type | motor yacht |
| LOA (m) | 14,20 |
| Beam (m) | 4,50 |
| Draft (m) | 1,30 |
| Air draft (m) | 3,70 |
| Headroom (m) | 2,10 |
| Year built | 1999 |
| Builder | Jachtbouw de Alm, Werkendam |
| Country | The Netherlands |
| Displacement (t) | 26 |
| Ballast (tonnes) | lead in steel |
| CE norm | B |
| Hull material | steel |
| Hull colour | blue |
| Hull thickness (mm) | 5 mm. |
| Hull shape | hard chine |
| Keel type | long keel |
| Superstructure material | steel |
| Superstructure (mm) | 4 mm. |
| Rubbing strake | rubber |
| Deck material | steel |
| Deck finish | non-skid paint |
| Superstructure deck finish | non-skid paint |
| Cockpit deck finish | teak |
| Antifouling (year) | 2017 |
| Dorades | yes |
| Window frame | aluminium |
| Window material | glass |
| Deckhatch | yes |



ALMTRAWLER 1320 AD

| | |
|------------------------------|-------------------------|
| Portholes | aluminium |
| Insulation | foam |
| Flybridge | yes |
| Mast can be lowered | manual |
| Fuel tank (litre) | steel 1500 |
| Fuel tank 2 (litre) | stainless steel 500 |
| Level indicator (fuel tank) | yes |
| Freshwater tank (litre) | stainless steel 2 x 500 |
| Level indicator (freshwater) | yes |
| Blackwater tank (litre) | stainless steel 350 |
| Level indicator (blackwater) | yes |
| Blackwater tank extraction | deck extraction + pump |
| Wheel steering | hydraulic |
| Inside helm position | yes |
| Flybridge helm position | hydraulic |
| Emergency tiller | yes |

ACCOMMODATION

| | |
|-------------------------|----------------------------|
| Cabins | 3 |
| Berths | 6 |
| Interior | teak |
| Floor | carpet |
| Open cockpit | yes |
| Pilot house/deck saloon | yes |
| Headroom saloon (m) | 2.10 |
| Heating | central heating Kabola B12 |
| Air-conditioning | single cycle airco |
| Chart table | yes |
| Dining room | yes |
| Opening door to cockpit | yes |
| Galley | yes |



ALMTRAWLER 1320 AD

| | |
|-----------------------|-------------------------|
| Countertop | plastic |
| Sink | stainless steel |
| Cooker | calor gas |
| Extractor | yes |
| Gas alarm | yes |
| Microwave/oven combi | yes |
| Fridge | 1x |
| Hot water system | on central heating |
| Water pressure system | electrical |
| Owners cabin | double bed |
| Bed length (m) | + 2.00 |
| Wardrobe | hanging/drawers/shelves |
| Bathroom | en suite |
| Toilet | en suite |
| Toilet system | electric |
| Wash basin | in the bathroom |
| Guest cabin 1 | double bed |
| Bed length (m) | 2.00 |
| Wardrobe | shelves |
| Bathroom | shared |
| Toilet | shared |
| Toilet system | electric |
| Wash basin | at the toilet |
| Shower | shared |
| Guest cabin 2 | double bed |
| Bed length (m) | 2.00 |
| Wardrobe | drawers and shelves |
| Washing machine | Candy 120 S |

MACHINERY

| | |
|---------------|---|
| No of engines | 1 |
|---------------|---|



ALMTRAWLER 1320 AD

| | |
|--------------------------|-------------------------------|
| Make | Perkins |
| Type | M225T.1 |
| HP | 225,00 |
| kW | 165,38 |
| Fuel | diesel |
| Year installed | 1999 |
| Engine hours | 2250 |
| Engine cooling system | freshwater heat exchanger |
| Drive | shaft |
| Engine controls | bowden cable |
| Gearbox | hydraulic |
| Bowthruster | electric |
| Sternthruster | electric |
| Exhaust | watercooled |
| Propeller type | fixed |
| Propeller blades | 4 |
| Propeller shaft material | stainless steel |
| Shaft lubrication | water |
| Electric bilge pump | yes |
| Electrical installation | 12v + 24v + 220 v |
| Generator | wet exhaust Kohler 4kW |
| Running hours generator | 467 |
| Batteries | 7 |
| Battery charger | Mastervolt 50 Amp. |
| Inverter | Mastervolt 2500W |
| Battery charger/inverter | Victron Multi Plus 24/3000-70 |
| Shorepower | with cable |
| Auto positioning system | yes |

NAVIGATION

| | |
|-------------------|-----------------------|
| Depth sounder/log | Raytheon ST60 Tridata |
|-------------------|-----------------------|



| | |
|------------------------|-----------------------------|
| Repeater | yes |
| VHF | Shipmate RS 8300 (no atis) |
| Autopilot | Raytheon ST6000 |
| Rudder angle indicator | yes |
| Radar/GPS/plotter | Raymarine C70 |
| Electronic chart(s) | yes |
| Navigation lights | yes |
| Searchlight | yes |
| Extra info | Display for the spud poles. |

EQUIPMENT

| | |
|----------------------------|--------------------|
| Bimini | yes |
| Winter cover | only for flybridge |
| Cockpit cushions | yes |
| Cockpit chairs | yes |
| Bathing platform | yes |
| Boarding ladder | stainless steel |
| Transom door | yes |
| Anchor | Danforth |
| Anchor chain | 30 m |
| Windlass | electrical |
| Deck wash | yes |
| Davits | stainless steel |
| Davits controls | manual |
| Sea railing | stainless steel |
| Railing side opening gates | yes |
| Pushpit | yes |
| Pulpit | yes |
| Horn | electric |
| Fenders | yes |
| Mooring lines | yes |





ALMTRAWLER 1320 AD



ALMTRAWLER 1320 AD



ALMTRAWLER 1320 AD



ALMTRAWLER 1320 AD



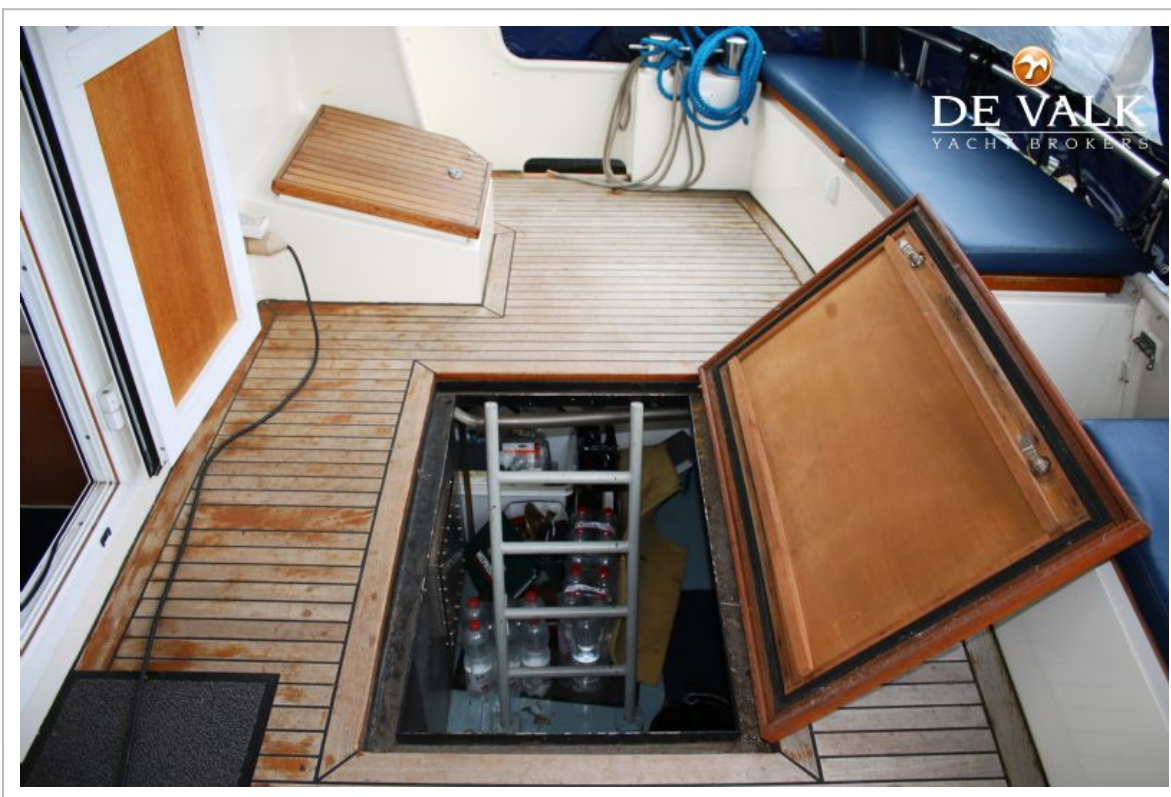
ALMTRAWLER 1320 AD



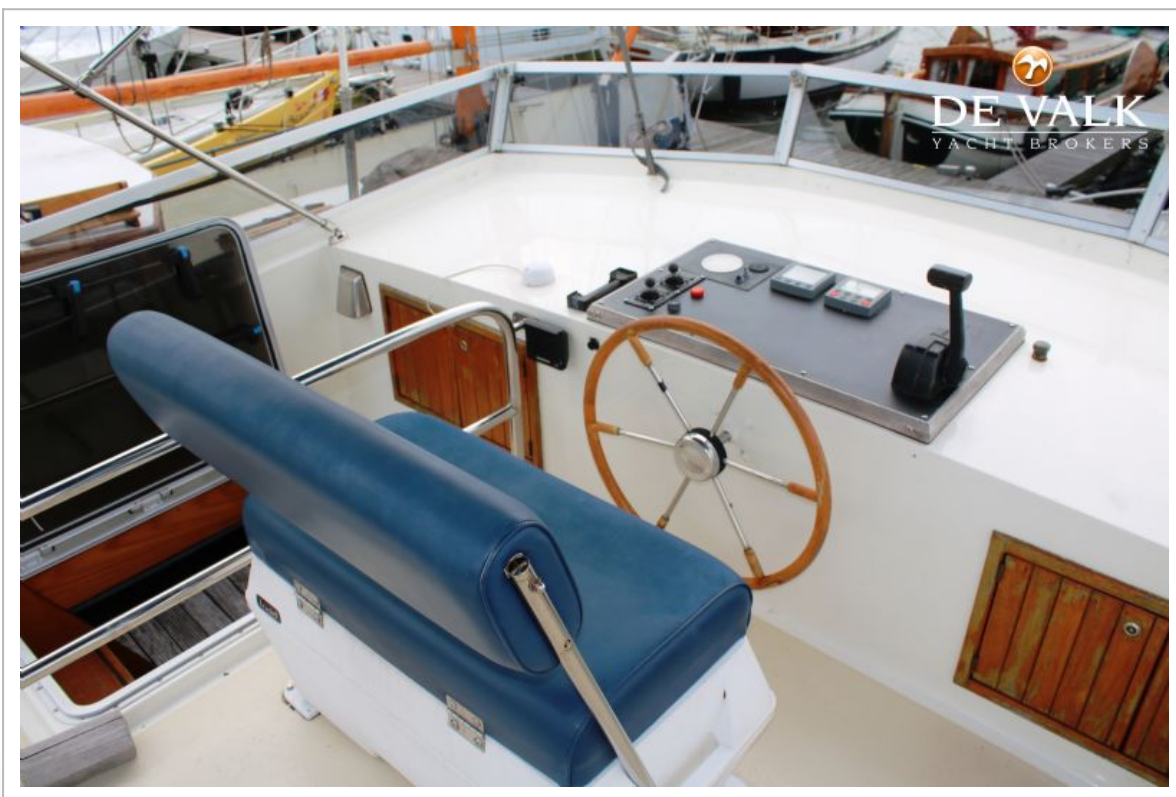
ALMTRAWLER 1320 AD



ALMTRAWLER 1320 AD



ALMTRAWLER 1320 AD



ALMTRAWLER 1320 AD



ALMTRAWLER 1320 AD



ALMTRAWLER 1320 AD



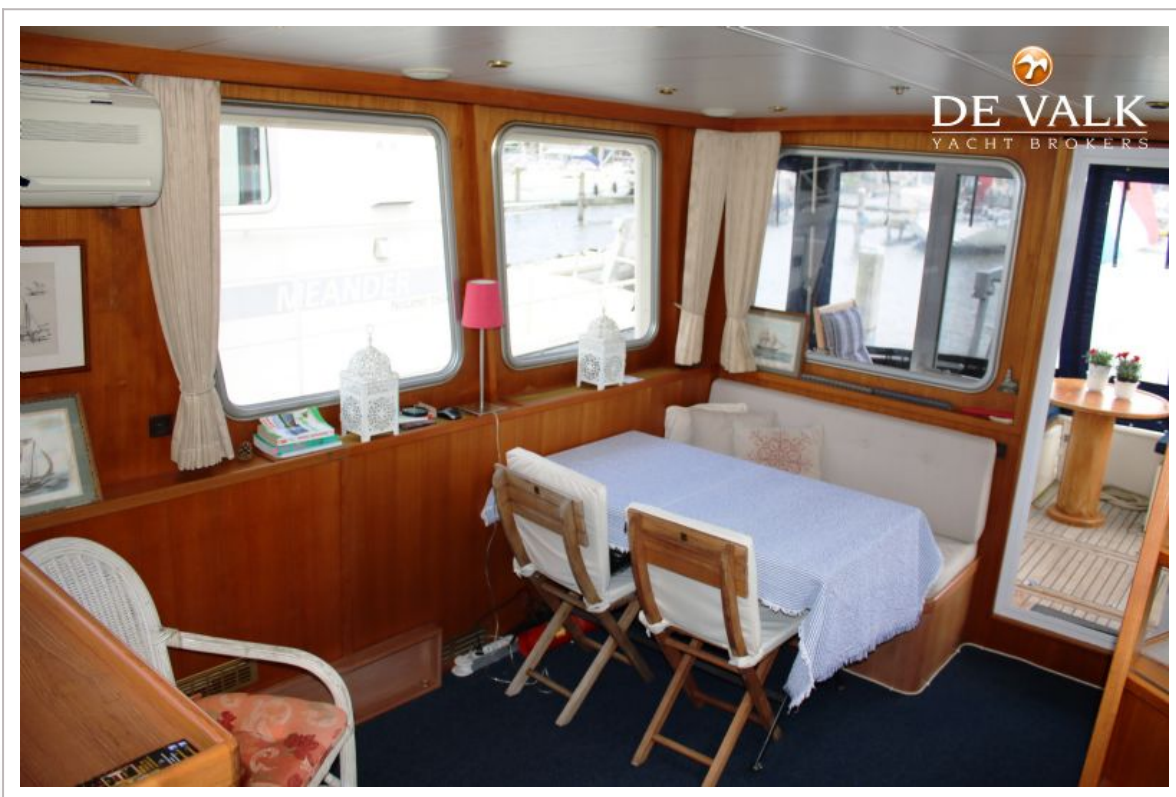
ALMTRAWLER 1320 AD



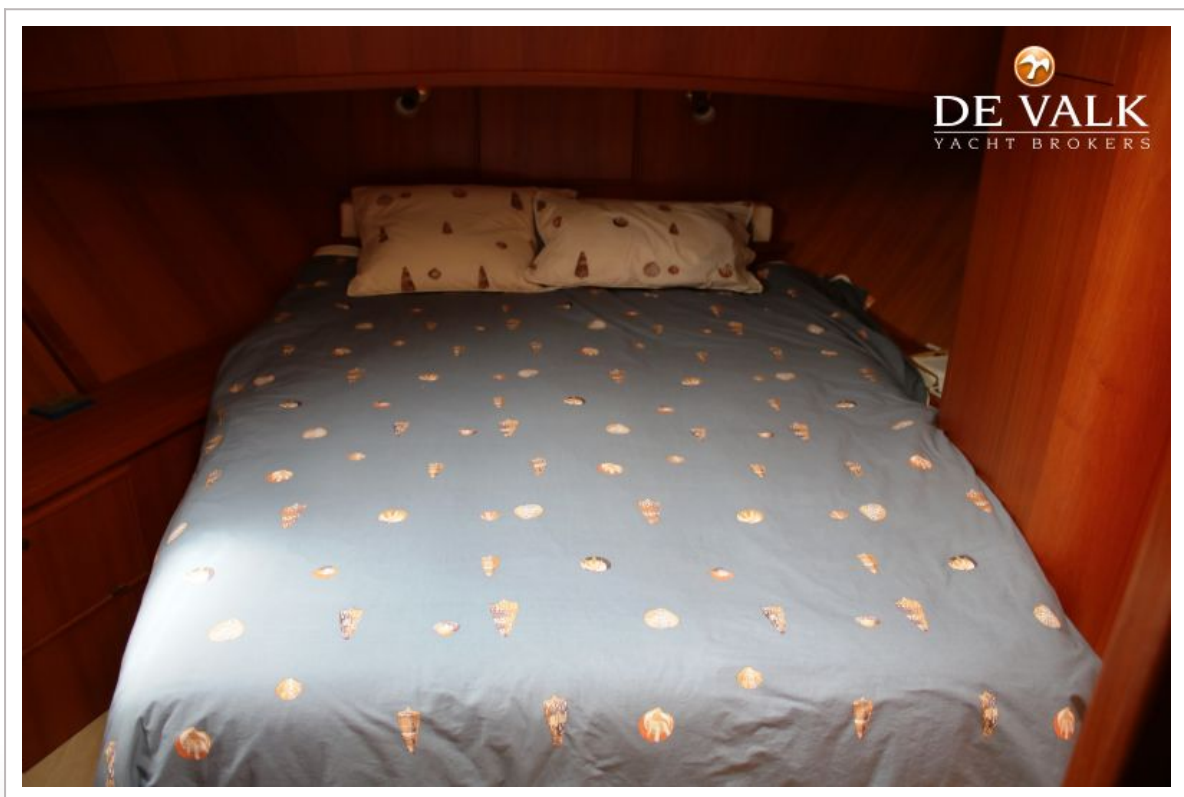
ALMTRAWLER 1320 AD



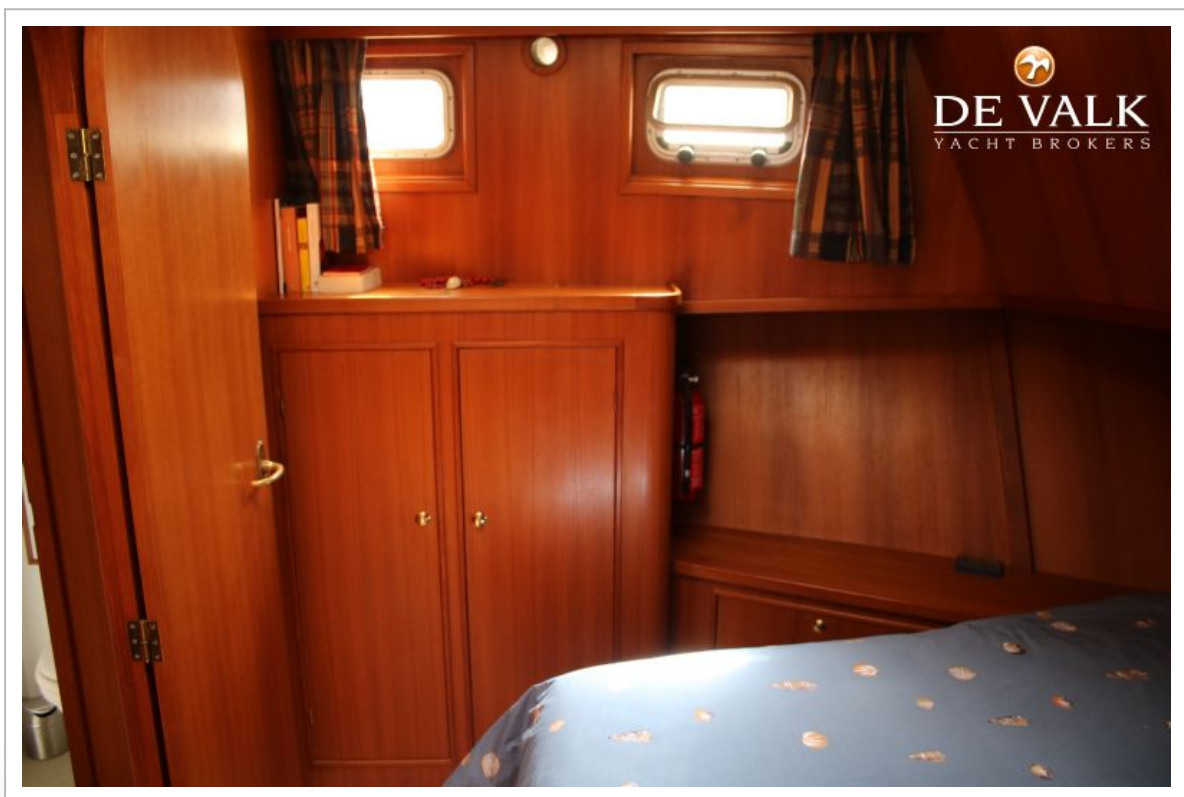
ALMTRAWLER 1320 AD



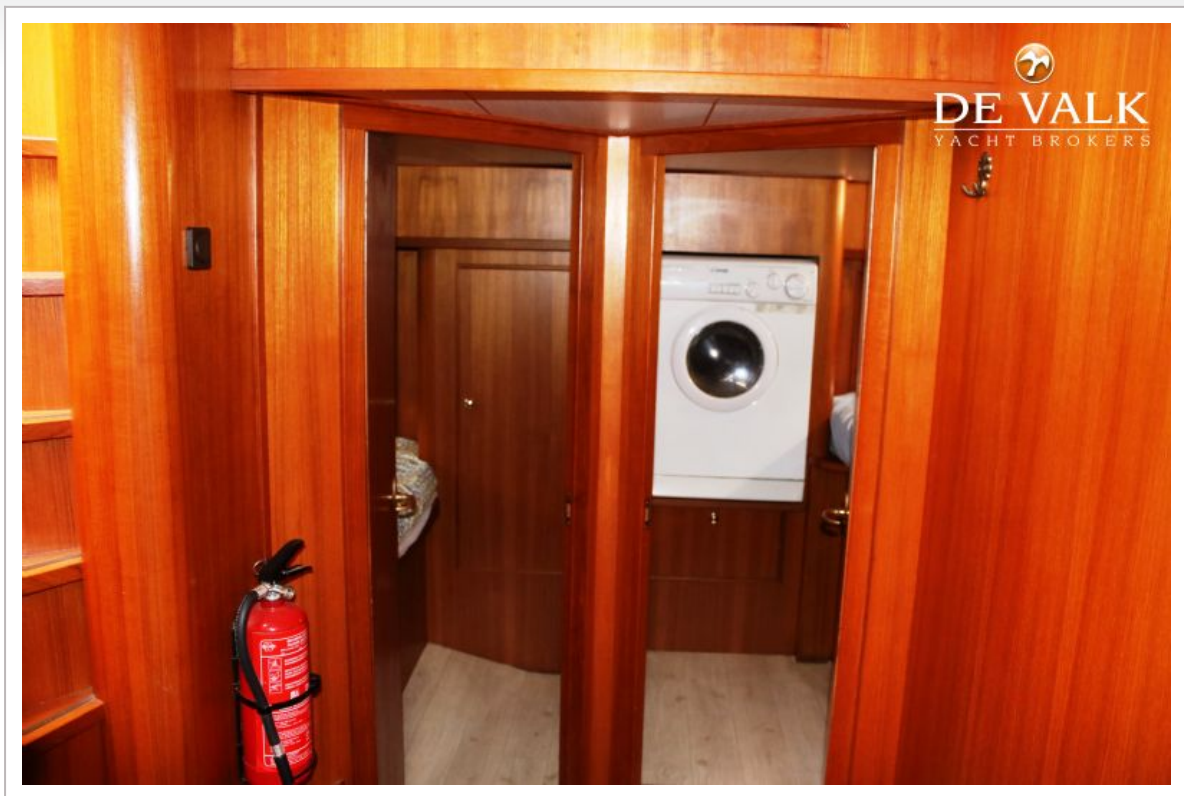
ALMTRAWLER 1320 AD



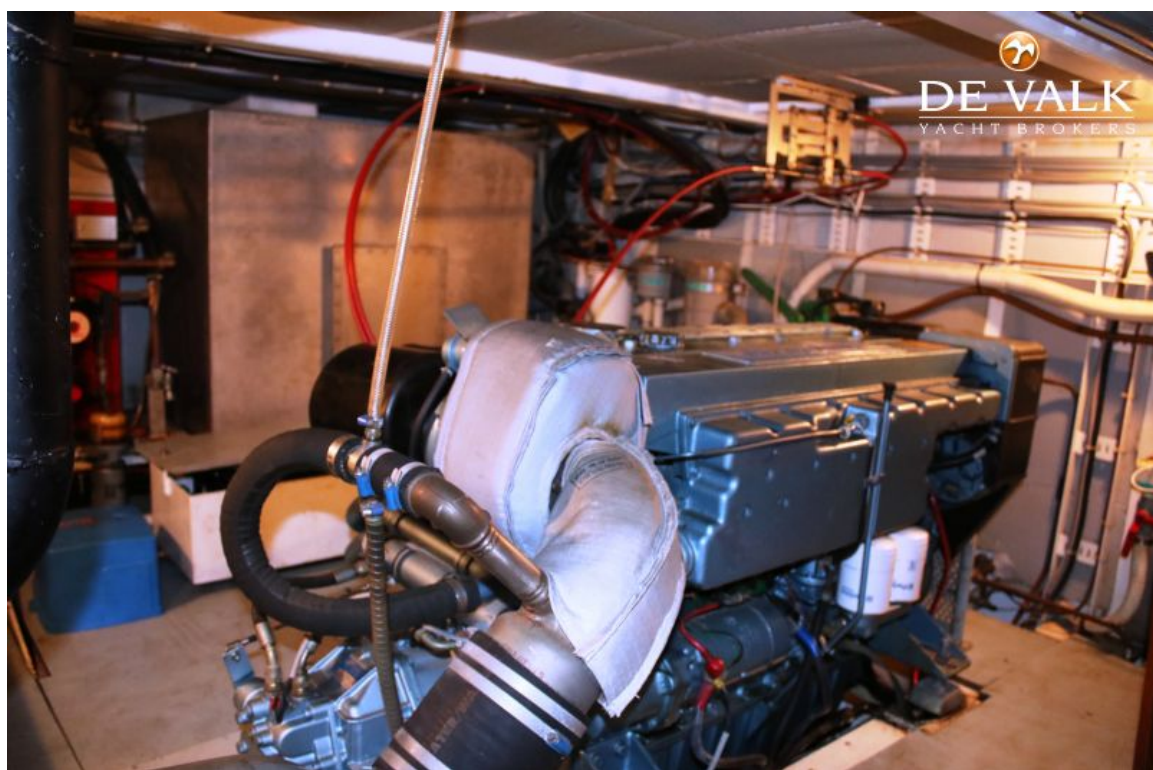
ALMTRAWLER 1320 AD



ALMTRAWLER 1320 AD



ALMTRAWLER 1320 AD



ALMTRAWLER 1320 AD

