



DE VALK
YACHT BROKERS



MOODY 40



DE VALK
YACHT BROKERS

BROKERAGE | CHARTER | BERTHS | FINANCE | INSURANCE | YACHT MANAGEMENT

BROKER'S COMMENTS

The Moody 40 is a beautiful performance cruising vessel, fully capable of comfortable extended blue water cruising. Due to the long waterline length and balanced helm, her performance is extraordinary, yet she can easily be sailed by just two people. Benefiting from the three cabin layout, this yacht has a large and airy saloon which can be enjoyed. There is a twin berth forward, a single cabin and the owner's generously proportioned stateroom aft with its centerline double berth. The layout is completed by an ample galley, two heads and more than adequate storage.

Jeanne Stukstette

SPECIFICATIONS

Dimensions	12.04 x 4.04 x 1.67 (m)	Builder	Marine Projects (Plymouth) Ltd
Built	1980	Cabins	3
Material	GRP	Berths	6
Engine(s)	1 x Thornycroft Leyland diesel	Hp/Kw	47.00 (hp), 34.55 (kw)
Asking price	sold (VAT)	Lying	at sales office

CONTACT

Sales office	De Valk Limburg	Telephone	+31 630372559
Address	Schippersveld 3 6019 DE Wessem NL	E-mail	limburg@devalk.nl

DISCLAIMER

These particulars are given in good faith as supplied but cannot be guaranteed.



GENERAL

Model	MOODY 40
Type	sailing yacht
LOA (m)	12,04
LWL (m)	9,88
Beam (m)	4,04
Draft (m)	1,67
Headroom (m)	2,00
Year built	1980
Builder	Marine Projects (Plymouth) Ltd
Country	United Kingdom
Designer	Angus Primrose
Displacement (t)	8,2
Ballast (tonnes)	3
Hull material	GRP
Hull colour	white
Keel type	fin keel
Superstructure material	GRP
Antifouling (year)	2021
Window frame	aluminium
Fuel tank (litre)	200
Freshwater tank (litre)	400
Wheel steering	cable steering

ACCOMMODATION

Cabins	3
Berths	6
Interior	teak
Floor	carpet
Headroom saloon (m)	1.86
Heating	electric 220V



Chart table	yes
Dining room	yes
Opening door to cockpit	yes
Galley	yes
Sink	stainless steel
Cooker	
Oven	yes
Fridge	yes
Water pressure system	electrical
Hot water tap	yes
Owners cabin	double bed
Wardrobe	hanging
Bathroom	en suite
Toilet	en suite
Toilet system	manual
Wash basin	in the bathroom
Shower	en suite
Guest cabin 1	v-bed
Wardrobe	hanging
Bathroom	shared
Toilet	shared
Toilet system	manual
Wash basin	in the bathroom
Shower	shared
Guest cabin 2	bunk bed
Wardrobe	hanging/drawers/shelves
Bathroom	shared
Toilet	shared

MACHINERY

No of engines	1
---------------	---



Make	Thornycroft Leyland
HP	47
kW	34,55
Fuel	diesel
Year installed	1980
Drive	shaft
Bowthruster	electric VETUS BOW 6012D 60kgf + 2xBATTERY
Batteries	3 Batteries
Bowthruster battery	2x

NAVIGATION

Compass	Plastimo
Depth sounder	Seafarer 700
Log	B&G
Windset	yes
VHF	yes
Autopilot	NECO
GPS	yes
Radio receiver	yes
Navigation lights	yes

EQUIPMENT

Sprayhood	yes
Winter cover	yes
Cockpit cushions	yes
Cockpit table	yes
Boarding ladder	aluminum
Anchor	
Anchor chain	yes
Sea railing	
Radar reflector	yes



Fenders	yes
Mooring lines	yes
Spare parts	yes
TV receiver	yes
Satellite	yes
Radio-cd player	Blaupunkt
Cockpit speakers	yes
Fire extinguisher	yes

RIGGING

Mainsail	yes
Mainsail cover	yes
Jib	yes
Spinnaker	yes
Stormjib	yes
Spinnaker winch	yes
Multifunctional winches	



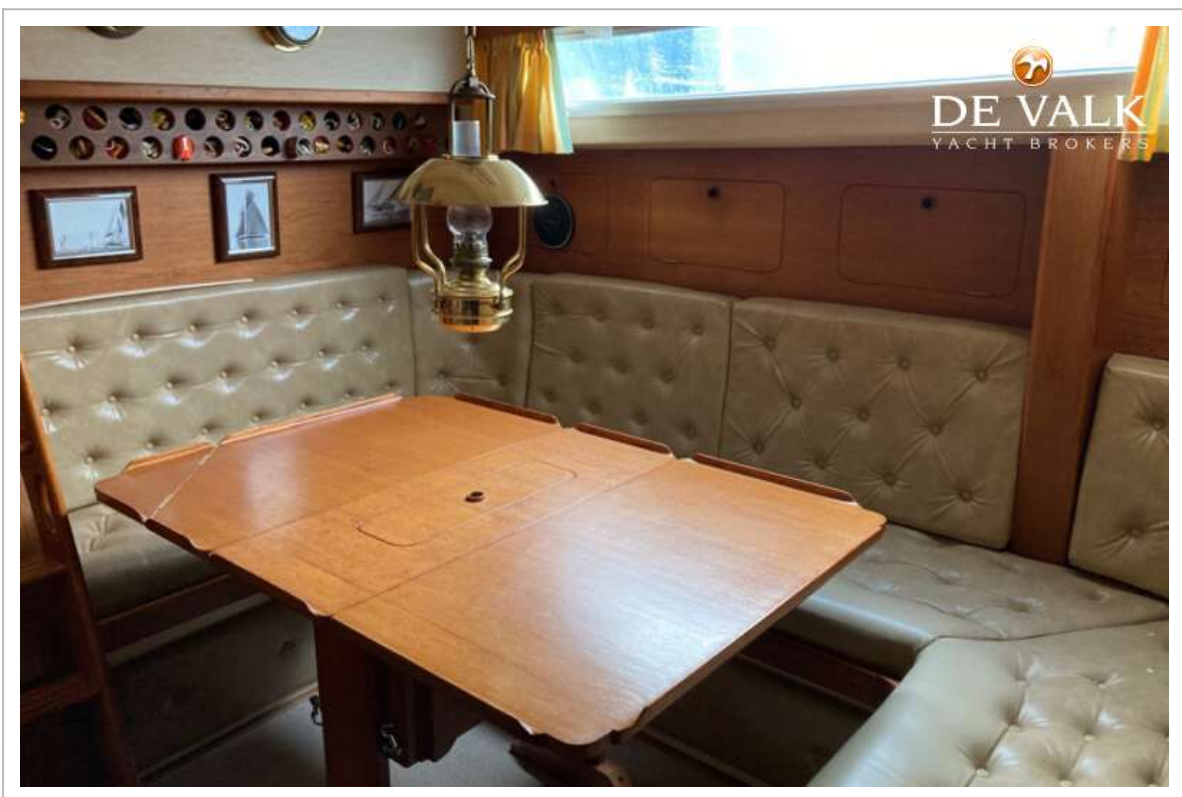
MOODY 40



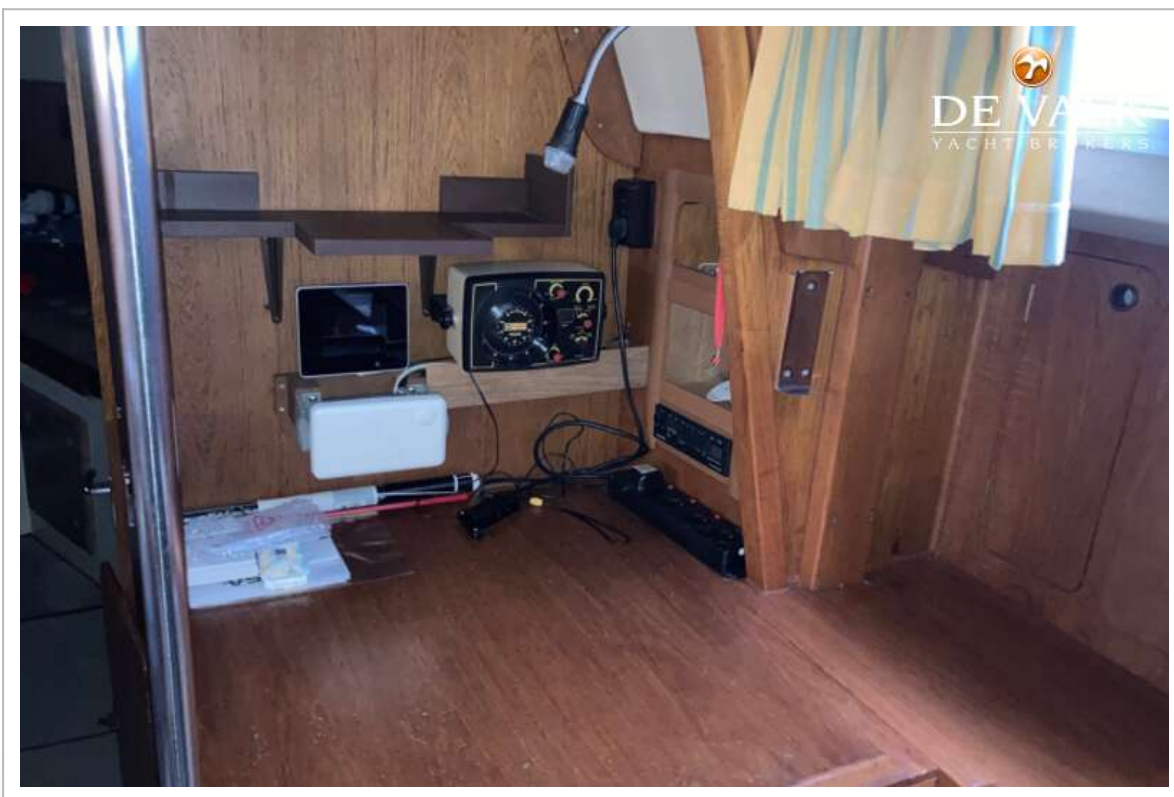
MOODY 40



MOODY 40



MOODY 40



MOODY 40



MOODY 40

