



DE VALK
YACHT BROKERS



TRINTELLA IV



DE VALK
YACHT BROKERS

TRINTELLA IV

BROKER'S COMMENTS

The Trintella IV has been developed from the Trintella III. The name of the designer - E.G. van der Stadt - guarantees a well thought-out construction which, besides comfort and space, offers lots of unmatched cruising pleasure. Van de Stadt is typically a designer of fast craft but time and ample space as well. Yes - The Trintella IV is unique in its class where performance, comfort and finish are concerned. Second owner since 1980

Sander van der Voorn

SPECIFICATIONS

Dimensions	12.20 x 3.50 x 1.59 (m)	Builder	Jachtwerf Anne Wever N.V.
Built	1977	Cabins	2
Material	GRP	Berths	6
Engine(s)	1 x Perkins 4.236 diesel	Hp/Kw	72.00 (hp), 52.92 (kw)
Asking price	sold (VAT)	Lying	at sales office

CONTACT

Sales office	De Valk Monnickendam B.V.	Telephone	+31 (0)299 65 63 50
Address	Hoogedijk 6 1145 PM Katwoude NL	E-mail	monnickendam@devalk.nl

DISCLAIMER

These particulars are given in good faith as supplied but cannot be guaranteed.



TRINTELLA IV

GENERAL

Model	TRINTELLA IV
Type	sailing yacht
LOA (m)	12,20
LWL (m)	9,80
Beam (m)	3,50
Draft (m)	1,59
Headroom (m)	1,92
Year built	1977
Builder	Jachtwerf Anne Wever N.V.
Country	The Netherlands
Designer	E.G. van de Stadt
Displacement (t)	10,5
Ballast (tonnes)	lead 4,3
Hull material	GRP
Hull colour	white Green/white
Hull shape	S-bilged
Keel type	long keel
Superstructure material	GRP
Rubbing strake	stainless steel Teak with
Deck material	GRP
Deck finish	teak
Superstructure deck finish	teak
Cockpit deck finish	teak
Antifouling (year)	Needs attention
Dorades	1
Window frame	aluminium
Window material	tempered glass
Deckhatch	3
Fuel tank (litre)	GRP 500 litre
Level indicator (fuel tank)	yes



Freshwater tank (litre)	GRP Ca. 500 Litre
Level indicator (freshwater)	yes
Blackwater tank (litre)	yes
Blackwater tank extraction	deck extraction + pump Uw line and
Wheel steering	hydraulic
Inside helm position	Under sprayhead
Emergency tiller	yes
More info on paintwork	Green finish 2017

ACCOMMODATION

Cabins	2
Berths	6
Interior	teak
Floor	teak and holly
Open cockpit	yes
Aft deck	yes
Saloon	yes
Headroom saloon (m)	1,92
Heating	diesel ducted hot air Webasto
Chart table	yes
Aft Cabin	yes
Dining room	yes
Dinette to convert into berth	yes
Opening door to cockpit	yes
Opening door to aft deck	yes
Galley	yes
Countertop	tiles
Sink	stainless steel 2
Cooker	calor gas Eno Mendoza
Oven	yes
Gas alarm	yes



TRINTELLA IV

Fridge	Engel
Freezer	In Fridge
Hot water system	geyser on Calor Gas Vaillant
Water pressure system	electrical
Crockery	yes
Owners cabin	v-bed
Bed length (m)	2,00 Mtr
Wardrobe	hanging and drawers
Bathroom	separate
Toilet	shared
Toilet system	manual Jabsco
Wash basin	in the bathroom
Shower	shared
Guest cabin 1	twin single
Bed length (m)	2,00
Wardrobe	hanging and drawers
Bathroom	separate
Toilet	shared Raritan PM1
Toilet system	manual
Wash basin	in the bathroom

MACHINERY

No of engines	1
Make	Perkins
Type	4.236
HP	72,00
kW	52,92
Fuel	diesel
Year installed	1977
Maximum speed (kn)	8
Consumption (l/hr)	4



Engine hours	1408
Engine cooling system	freshwater heat exchanger
Drive	shaft
Engine controls	bowden cable
Gearbox	hydraulic
Exhaust	watercooled
Propeller type	fixed
Propeller blades	3
Propeller shaft material	stainless steel Niro
Shaft lubrication	oilbath
Manual bilge pump	yes
Electric bilge pump	yes
Bilge alarm	yes
Start battery	+ 1 extra
Service battery	4 x Varta 12 v 95 Ah 2015
Battery monitor	Clipper BM1
Battery charger	Sterling Marina Power 40 Ah
Diode battery combiners	yes
Shorepower	with cable

NAVIGATION

Compass	+ Hand Compass
Depth sounder	VDO
Log	VDO
Windset	VDO
VHF	Shipmate RS 8300
Autopilot	Raymarine ST6002.
Rudder angle indicator	yes
Radar	Raython RL9
Weather receiver	Radio Telex
Navtex	Nav4 NMEA



Navigation lights	yes
Searchlight	yes

EQUIPMENT

Fixed windscreen	yes
Sprayhood	yes
Cockpit table	yes
Boarding ladder	stainless steel
Gangway	yes
Deck shower	yes
Anchor	CQR Plough
Anchor chain	40 Mtr.
Deck wash	Cock pit shower warm/ cold water
Dinghy	inflatable Primar Roll 210
Outboard	Yamaha Malta 2,2 KW
Davits	stainless steel
Davits controls	manual
Sea railing	wire
Grab rail (superstructure)	wood
Railing side opening gates	yes
Pulpit	yes
Life raft	container
Life raft (pers)	6
Last life raft survey	yes
Wiper	2 x
Clearview window	yes
Horn	electric
Fenders	yes
Mooring lines	yes
Spare parts	yes
Radio-cd player	Blaupunkt



Speakers in salon	yes
Speakers in cabin	yes
Clock - barometer	yes
Extra info	VHF Sailer 7609

RIGGING

Rigging	ketch
Standing rigging	wire 1998/1999
Brand mast	Seldén
Material mast	aluminium
Spreaders	2 x
Mainsail	2005
Stoway mast	yes
Genoa	2005
Genoa furler	Furlex 304S 2017
Reefing System	main in-mast furling
Boomvang	tackle
Primary sheet winch	Electric Andersen 46 ST 2 x
Secondary sheet winch	Barlow 23 -26 2x
Multifunctional winches	Barlow
Spi-pole	aluminium
Isolated backstay	yes



TRINTELLA IV



TRINTELLA IV



TRINTELLA IV



TRINTELLA IV



TRINTELLA IV



TRINTELLA IV



TRINTELLA IV



TRINTELLA IV



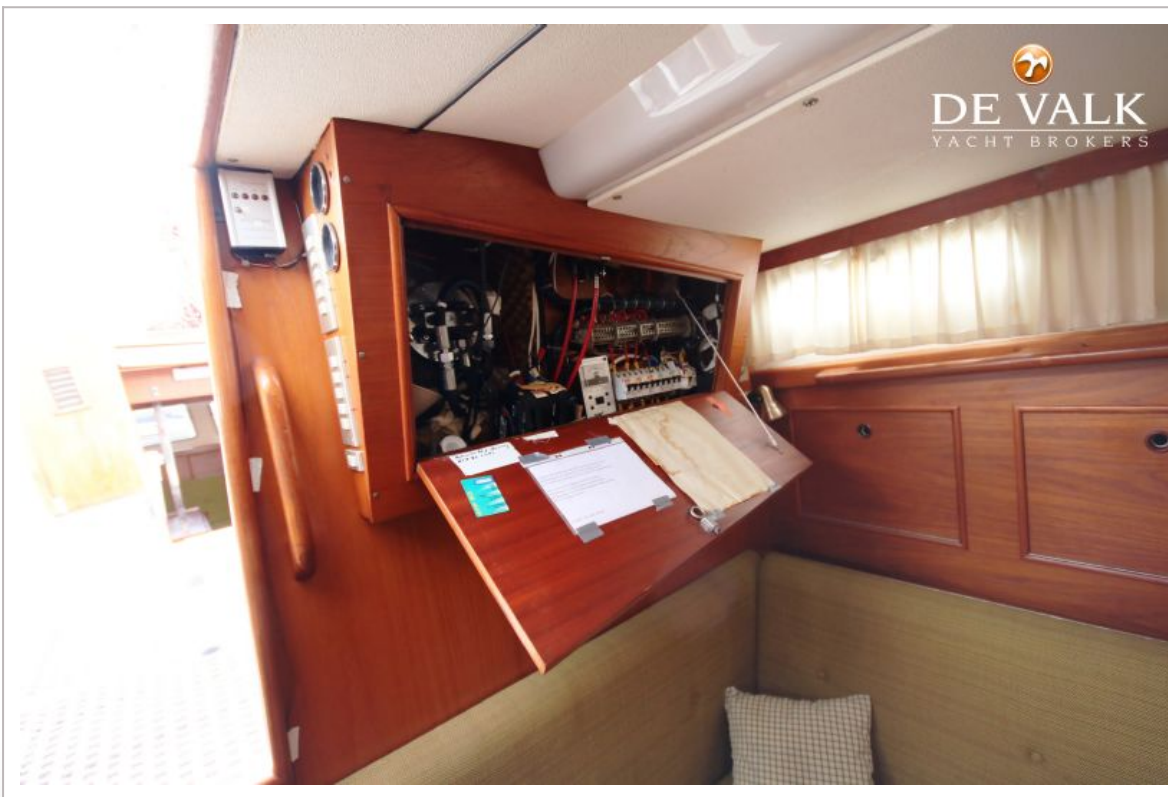
TRINTELLA IV



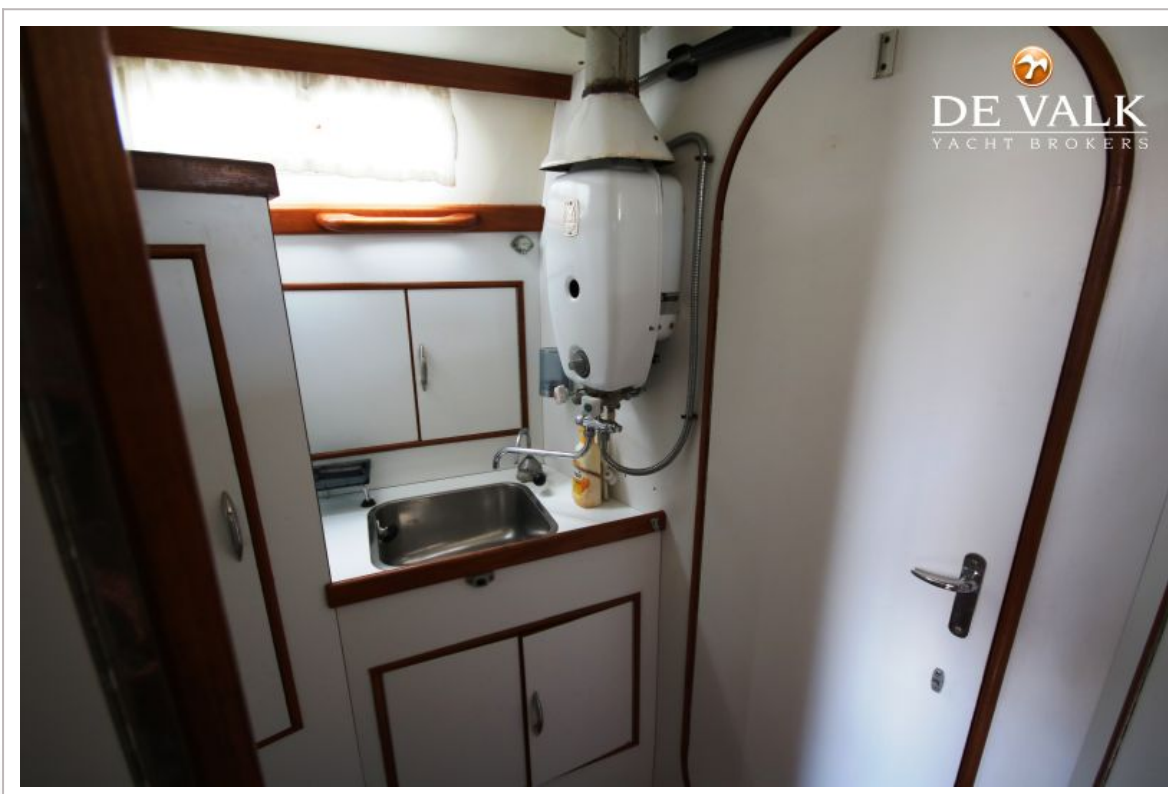
TRINTELLA IV



TRINTELLA IV



TRINTELLA IV



TRINTELLA IV



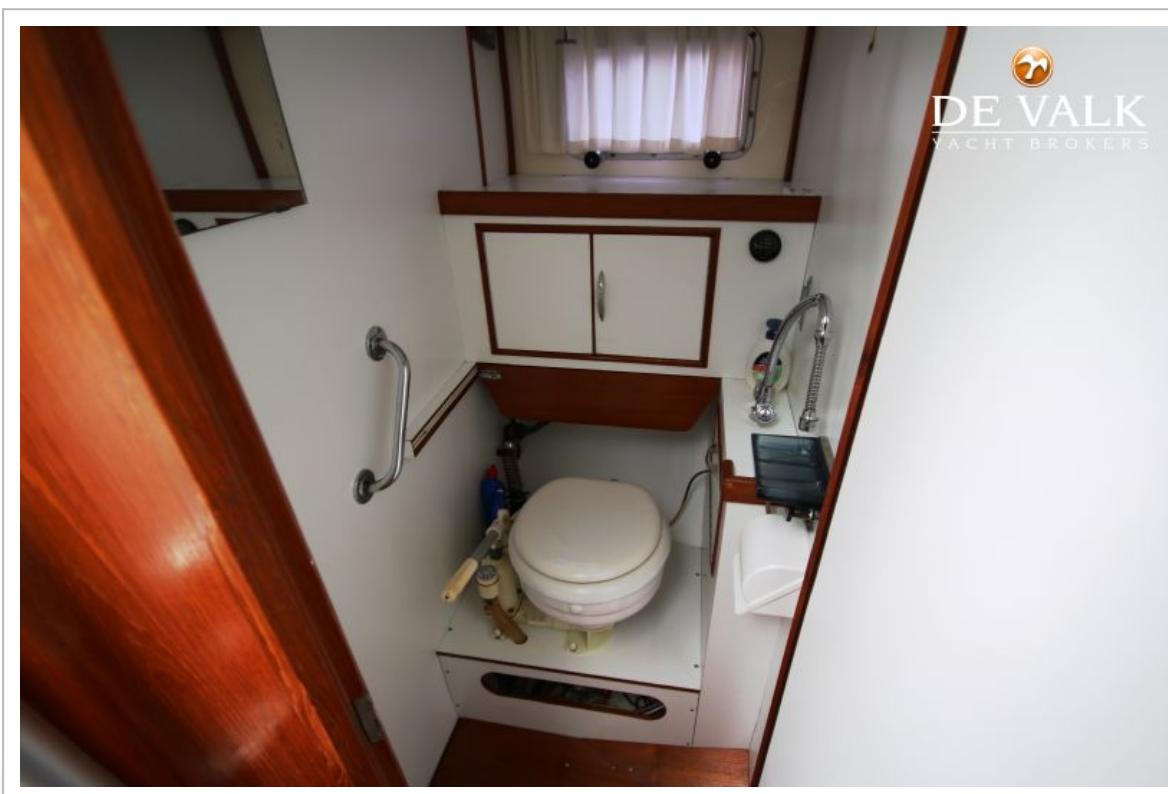
TRINTELLA IV



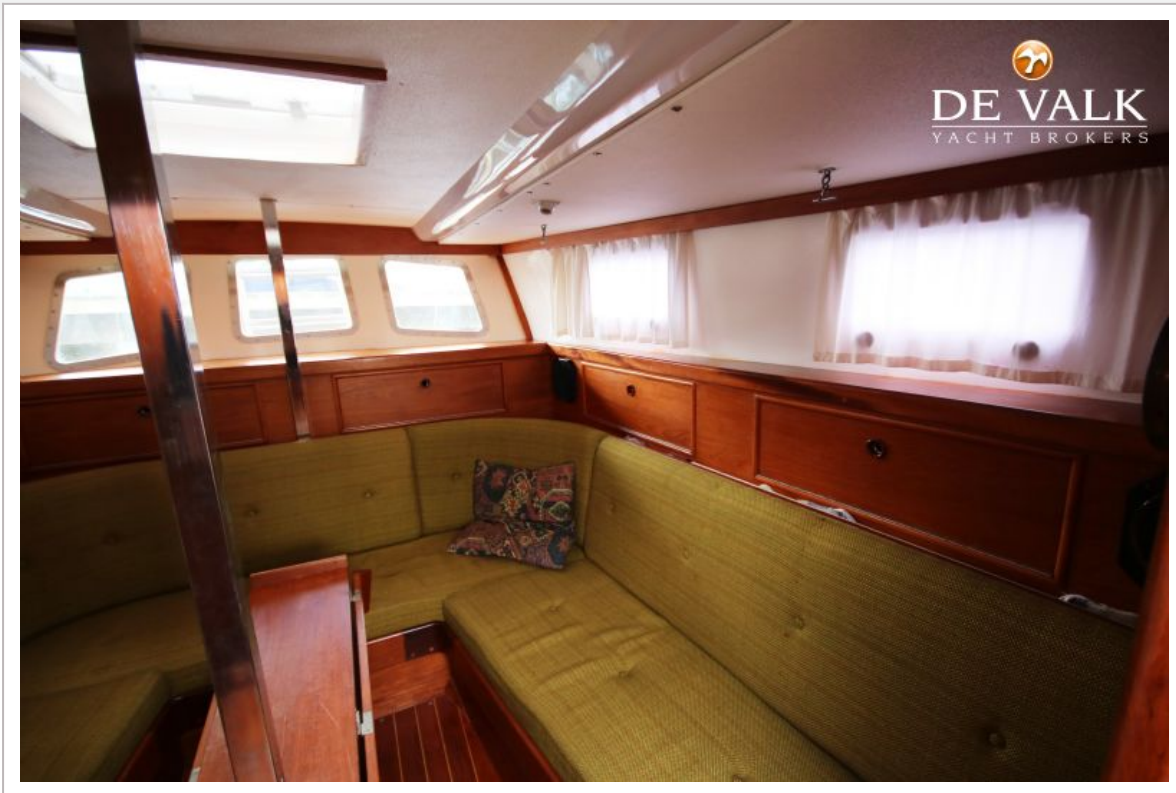
TRINTELLA IV



TRINTELLA IV



TRINTELLA IV



TRINTELLA IV

