



DE VALK  
YACHT BROKERS



## X-YACHTS X-34



DE VALK  
YACHT BROKERS

# X-YACHTS X-34

## BROKER'S COMMENTS

This X-yachts X-34 is a sportive family yacht. Suitable for a day sailing, holiday or for sailing regattas. The quality of finish and equipment is at a high level. Recent sails, large carbon steering wheel, keel stepped mast and rod rigging together, ensure a super good sailing yacht. Well maintained. Can also be delivered ex. VAT. For viewing, please contact our Monnickendam office.

*Sander van der Voorn*

## SPECIFICATIONS

<b>Dimensions</b>	10.34 x 3.40 x 1.95 (m)	<b>Builder</b>	X-Yachts Haderslev Denmark
<b>Built</b>	2008	<b>Cabins</b>	2
<b>Material</b>	GRP	<b>Berths</b>	6
<b>Engine(s)</b>	1 x Yanmar 3YM20 diesel	<b>Hp/Kw</b>	20.00 (hp), 14.00 (kw)
<b>Asking price</b>	sold (VAT )	<b>Lying</b>	elsewhere / Not at sales office

## CONTACT

<b>Sales office</b>	De Valk Monnickendam B.V.	<b>Telephone</b>	+31 (0)299 65 63 50
<b>Address</b>	Hoogedijk 6 1145 PM Katwoude NL	<b>E-mail</b>	monnickendam@devalk.nl

## DISCLAIMER

These particulars are given in good faith as supplied but cannot be guaranteed.



## GENERAL

<b>Model</b>	X-YACHTS X-34
<b>Type</b>	sailing yacht
<b>LOA (m)</b>	10,34
<b>Beam (m)</b>	3,40
<b>Draft (m)</b>	1,95
<b>Headroom (m)</b>	1,85
<b>Year built</b>	2008
<b>Launched</b>	2009
<b>Builder</b>	X-Yachts Haderslev Denmark
<b>Country</b>	Denmark
<b>Designer</b>	Niels Jeppesen
<b>Displacement (t)</b>	5,3
<b>Ballast (tonnes)</b>	cast iron and lead 2,2
<b>CE norm</b>	A
<b>Hull material</b>	GRP
<b>Hull colour</b>	white
<b>Hull shape</b>	round-bilged
<b>Keel type</b>	fin keel with bulb
<b>Superstructure material</b>	GRP
<b>Rubbing strake</b>	stainless steel
<b>Deck material</b>	GRP
<b>Deck finish</b>	non-skid moulded in
<b>Superstructure deck finish</b>	non-skid moulded in
<b>Cockpit deck finish</b>	teak
<b>Antifouling (year)</b>	2019
<b>Window frame</b>	aluminium
<b>Window material</b>	polycarbonate
<b>Deckhatch</b>	fly screen and curtain 2
<b>Fuel tank (litre)</b>	stainless steel 90
<b>Level indicator (fuel tank)</b>	yes



Freshwater tank (litre)	polyethylene 200
Level indicator (freshwater)	needs to be checked
Blackwater tank (litre)	GRP 40
Level indicator (blackwater)	yes
Blackwater tank extraction	deck extraction
Wheel steering	cable steering Carbon
Emergency tiller	yes

## ACCOMMODATION

Cabins	2
Berths	6
Interior	mahogany
Floor	teak and holly
Heating	diesel ducted hot air Mikuni
Navigation center	yes
Chart table	yes
Aft Cabin	yes
Galley	yes
Countertop	plastic
Sink	stainless steel
Cooker	calor gas Eno
Oven	Eno
Fridge	Isotherm
Freezer	in Fridge Isotherm
Hot water system	220V + engine Boiler 2017
Water pressure system	electrical
Owners cabin	v-bed
Bed length (m)	2,00 x 1,55
Wardrobe	hanging and shelves
Bathroom	shared
Toilet	shared



# X-YACHTS X-34

<b>Toilet system</b>	manual Jabsco
<b>Wash basin</b>	in the bathroom
<b>Shower</b>	shared
<b>Guest cabin 1</b>	double bed
<b>Bed length (m)</b>	2,05 x 1,65
<b>Wardrobe</b>	drawers and shelves

## MACHINERY

<b>No of engines</b>	1
<b>Make</b>	Yanmar
<b>Type</b>	3YM20
<b>HP</b>	20
<b>kW</b>	14,00
<b>Fuel</b>	diesel
<b>Year installed</b>	2009
<b>Engine cooling system</b>	freshwater heat exchanger
<b>Drive</b>	sail-drive
<b>Saildrive seal</b>	yes
<b>Engine controls</b>	bowden cable
<b>Gearbox</b>	mechanical
<b>Exhaust</b>	watercooled
<b>Propeller type</b>	folding Gori
<b>Propeller blades</b>	2
<b>Manual bilge pump</b>	yes
<b>Electric bilge pump</b>	yes
<b>Electrical installation</b>	12/220V
<b>Start battery</b>	yes
<b>Service battery</b>	1 x AGM ST 220 Ah 8-2018
<b>Battery charger</b>	Victron Energy Blue Smart 12V/30Ah
<b>Shorepower</b>	with cable



## NAVIGATION

Compass	Suunto
Depth sounder	Raymarine ST60+
Log	Raymarine ST60+
Windset	Raymarine ST60+
Repeater	Raymarine ST60+ Graphic
VHF	Raymarine Ray 240E VHF
Autopilot	Raymarine ST6002
Plotter/GPS	Raymarine Hybrid Touch
AIS transponder	Weahterdock Easy TRX2
Navigation lights	yes

## EQUIPMENT

Sprayhood	Schultz
Cockpit cushions	yes
Bathing platform	yes
Boarding ladder	stainless steel
Anchor	7 kg
Sea railing	wire
Grab rail (superstructure)	stainless steel
Pushpit	Stainless steel
Pulpit	Stainless steel
Fenders	yes
Mooring lines	yes
Radio-cd player	JVC
iPod connection	yes
Speakers in salon	yes
Clock - barometer	yes

## RIGGING



# X-YACHTS X-34

<b>Rigging</b>	sloop 9/10
<b>Standing rigging</b>	Rod 2019
<b>Brand mast</b>	John mast
<b>Material mast</b>	aluminium
<b>Spreaders</b>	Pair
<b>Keel stepped mast</b>	yes
<b>Mainsail</b>	Halver sails 2017
<b>Battcars</b>	Ronstan
<b>Fully battened mainsail</b>	yes
<b>Jib</b>	Nieuw
<b>Genoa</b>	Halver sails 2017
<b>Genoa furler</b>	yes
<b>Gennaker</b>	yes
<b>Reefing System</b>	quick-one-line-reefing
<b>Backstay adjuster</b>	mechanical Ronstan Magic Wheel
<b>Boomvang</b>	mechanical and tackle
<b>Primary sheet winch</b>	Andersen 46 ST
<b>Secondary sheet winch</b>	Andersen 40 ST
<b>Halyard winches</b>	Andersen 40 ST
<b>Spi-pole</b>	



# X-YACHTS X-34





# X-YACHTS X-34



# X-YACHTS X-34



# X-YACHTS X-34





# X-YACHTS X-34



# X-YACHTS X-34

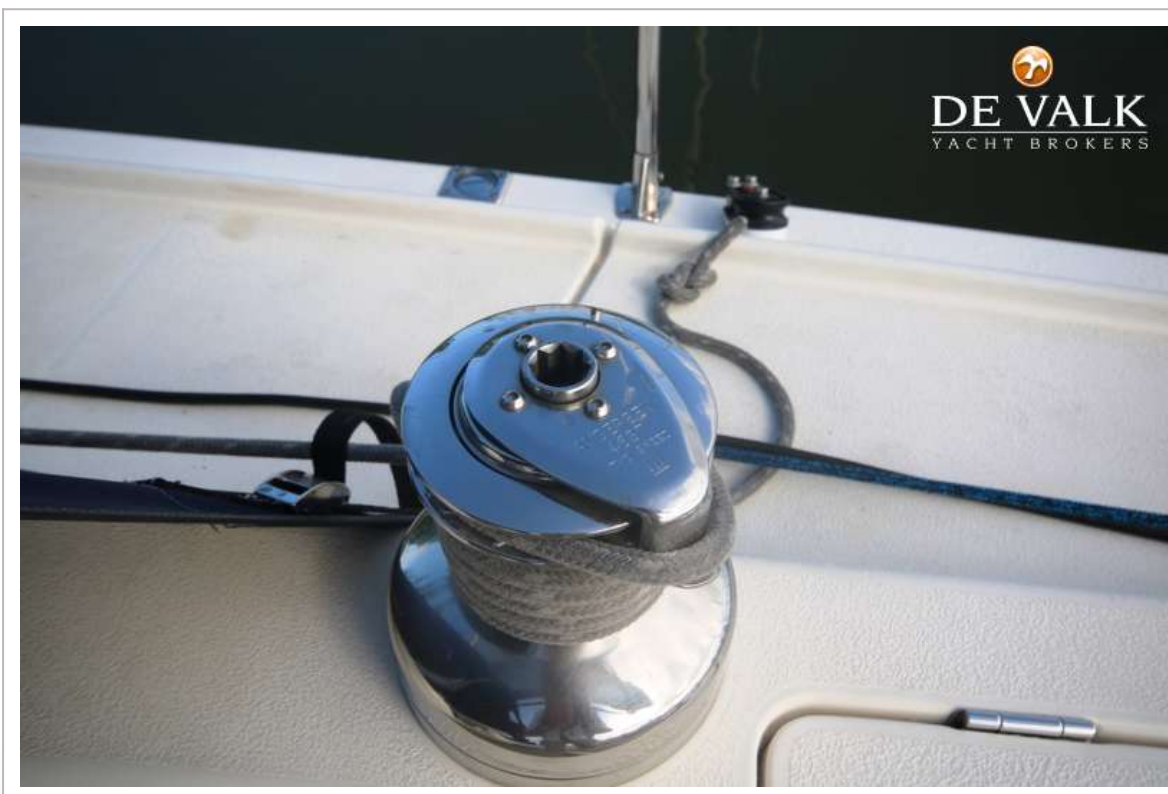




# X-YACHTS X-34

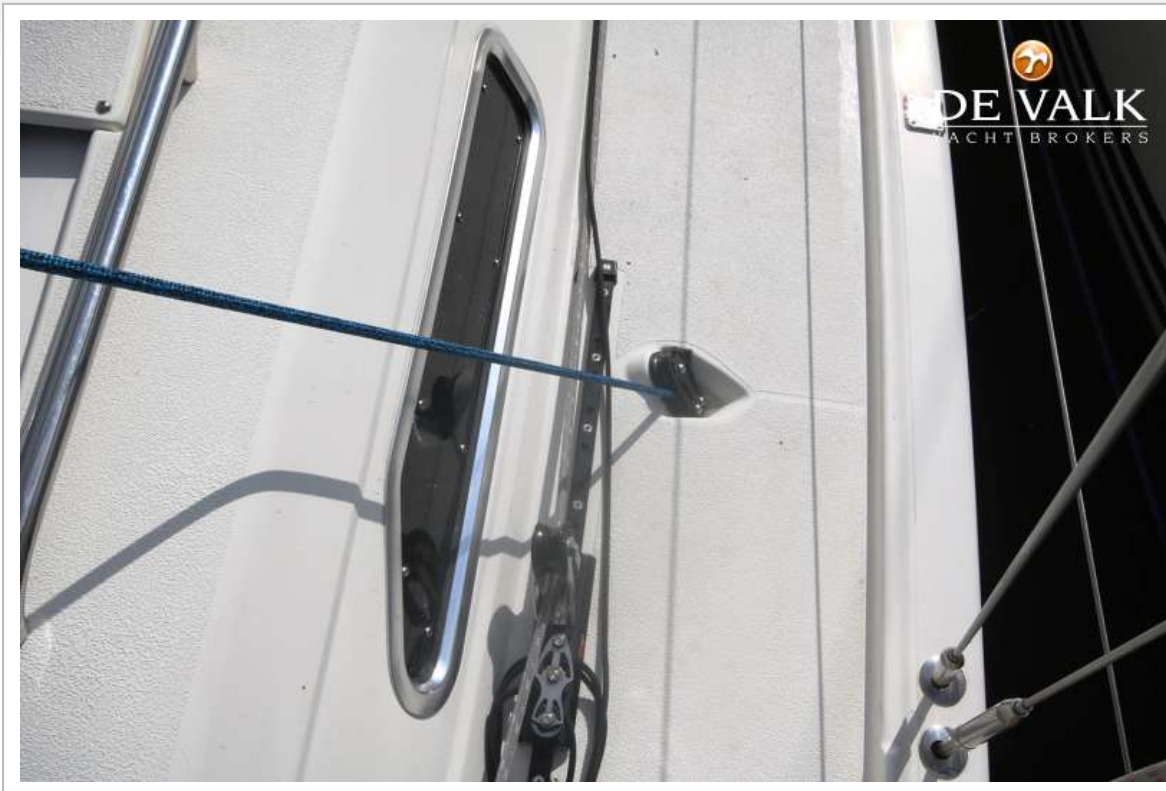


# X-YACHTS X-34





# X-YACHTS X-34





# X-YACHTS X-34



# X-YACHTS X-34





# X-YACHTS X-34

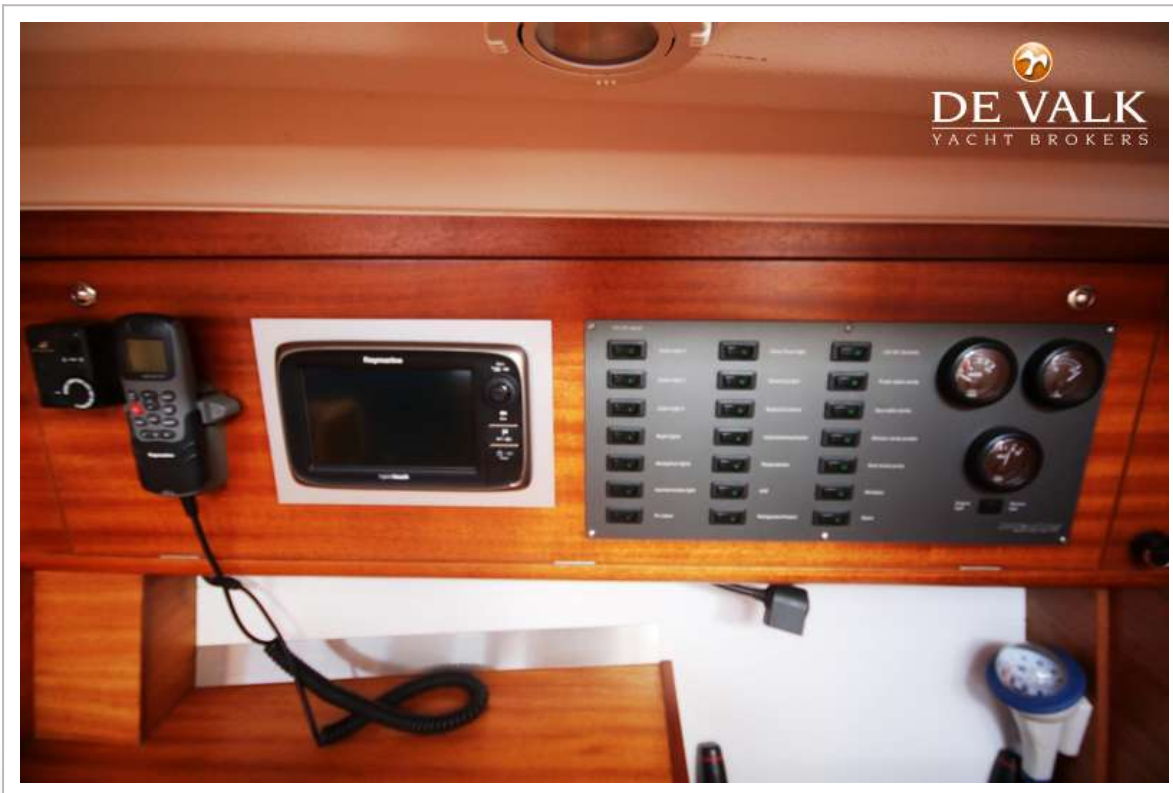


# X-YACHTS X-34





# X-YACHTS X-34

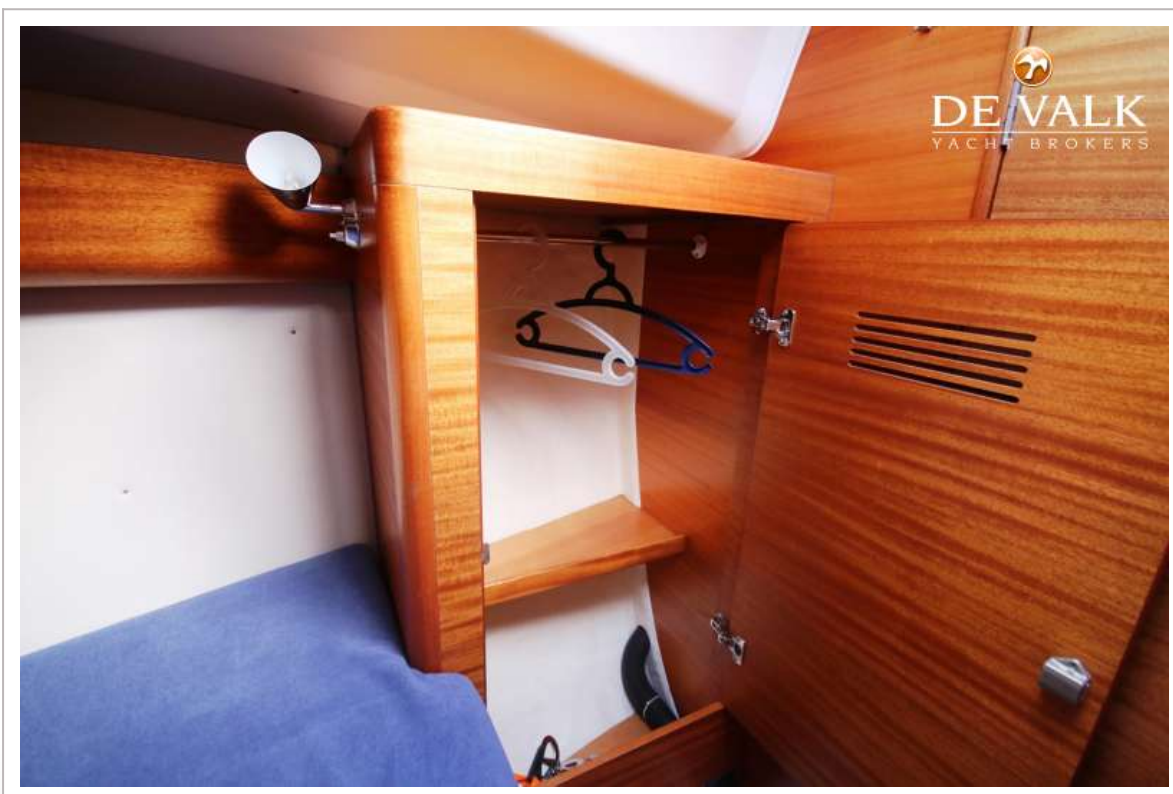
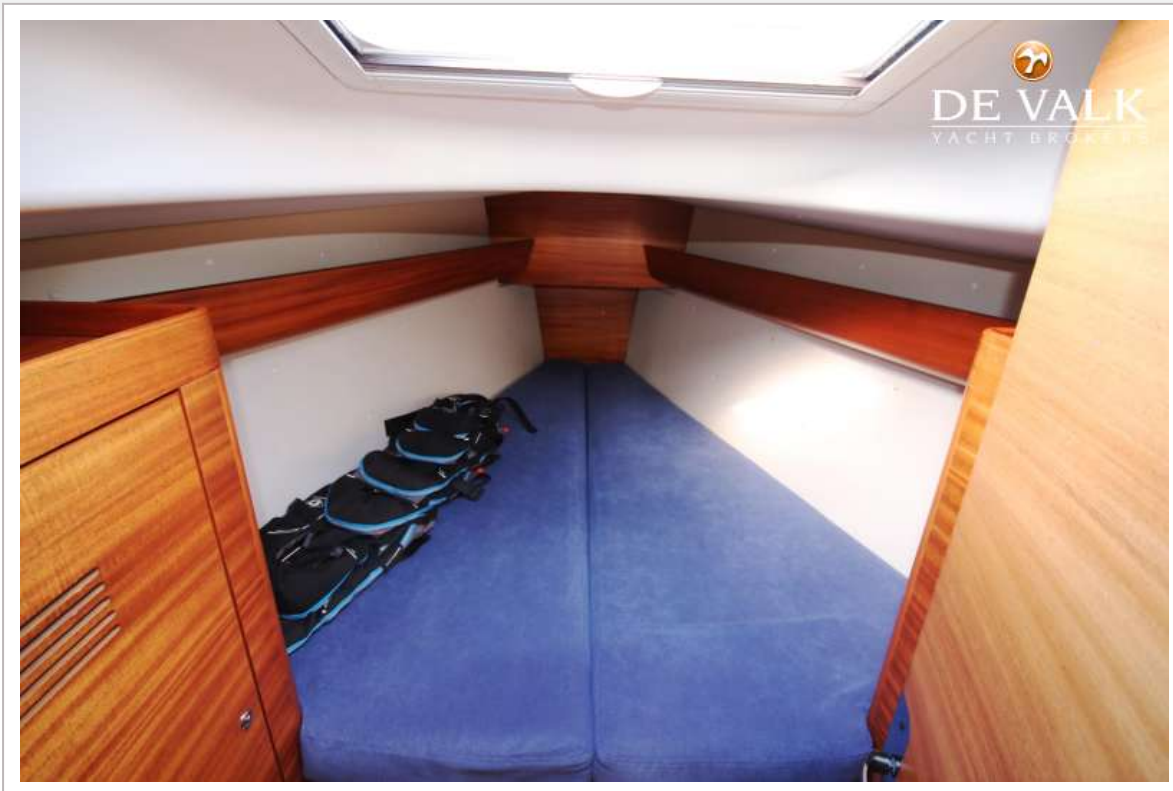


# X-YACHTS X-34

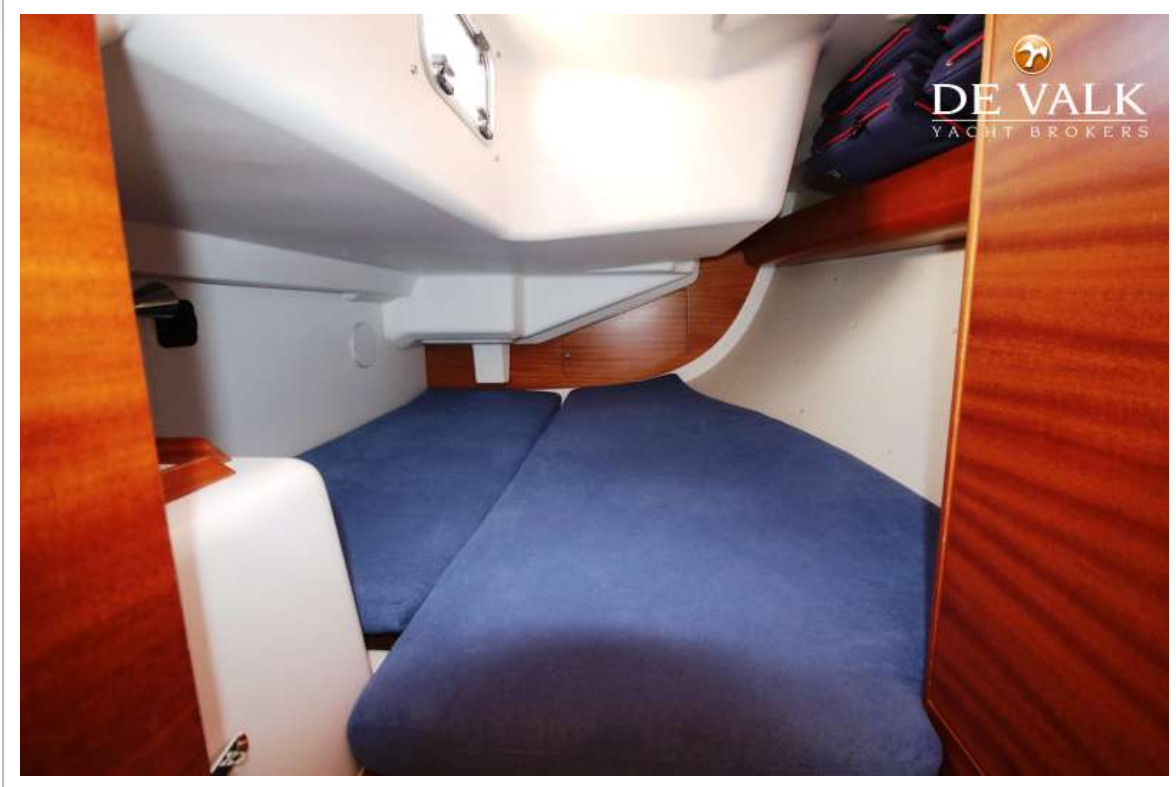




# X-YACHTS X-34

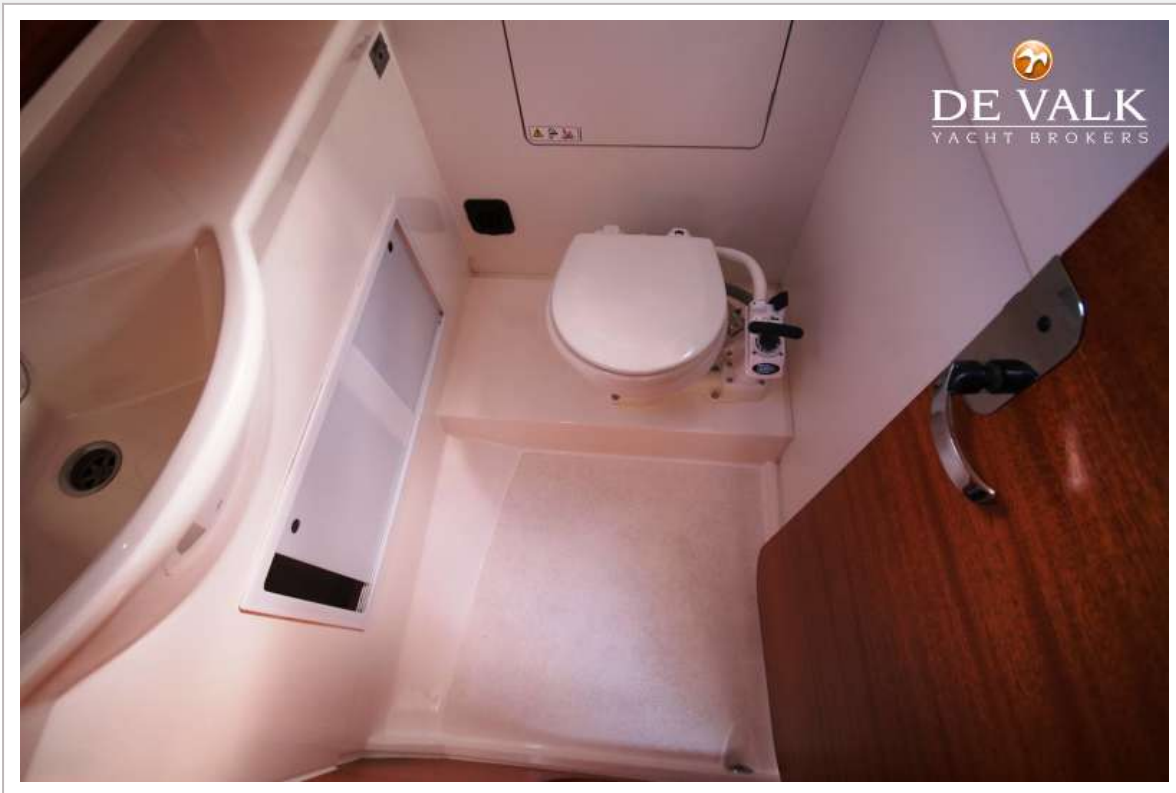


# X-YACHTS X-34





# X-YACHTS X-34



# X-YACHTS X-34

