



DE VALK
YACHT BROKERS



WESTERLY OCEANRANGER 38



DE VALK
YACHT BROKERS

WESTERLY OCEANRANGER 38

BROKER'S COMMENTS

The Oceanranger 38 is designed to handle long passages in safety and comfort, but is equally suited to coastal cruising in home waters. Safe and simple to sail, she can be easily managed by a crew of two.

Reinier van der Wolf

SPECIFICATIONS

| | | | |
|---------------------|-----------------------------------|----------------|------------------------|
| Dimensions | 11.58 x 3.86 x 1.52 (m) | Builder | Westerly Yacht Limited |
| Built | 1990 | Cabins | 2 |
| Material | GRP | Berths | 7 |
| Engine(s) | 1 x Volvo Penta 2003 HE BT diesel | Hp/Kw | 28.00 (hp), 20.58 (kw) |
| Asking price | sold (VAT) | Lying | at sales office |

CONTACT

| | | | |
|---------------------|---------------------------------------|------------------|------------------------|
| Sales office | De Valk Monnickendam B.V. | Telephone | +31 (0)299 65 63 50 |
| Address | Hoogedijk 6 1145 PM Katwoude NL | E-mail | monnickendam@devalk.nl |

DISCLAIMER

These particulars are given in good faith as supplied but cannot be guaranteed.



WESTERLY OCEANRANGER 38

GENERAL

| | |
|----------------------------|---------------------------|
| Model | WESTERLY OCEANRANGER 38 |
| Type | sailing yacht |
| LOA (m) | 11,58 |
| LWL (m) | 9,37 |
| Beam (m) | 3,86 |
| Draft (m) | 1,52 |
| Air draft (m) | 15,85 |
| Headroom (m) | 1,95 |
| Year built | 1990 |
| Launched | 3 may 1991 |
| Builder | Westerly Yacht Limited |
| Country | Great Britain |
| Designer | Ed Buboïs |
| Displacement (t) | 7,1 |
| Ballast (tonnes) | 2,994 |
| Hull material | GRP |
| Hull colour | white |
| Hull shape | round-bilged |
| Keel type | fin keel Cast iron |
| Superstructure material | GRP |
| Rubbing strake | wood |
| Deck material | GRP |
| Deck finish | Treadmaster |
| Superstructure deck finish | Treadmaster |
| Cockpit deck finish | TBS non-skid profile mats |
| Antifouling (year) | 2017 'International' |
| Window frame | yes |
| Window material | yes |
| Deckhatch | 2x |
| Fuel tank (litre) | 152 |



| | |
|------------------------------|---|
| Level indicator (fuel tank) | yes |
| Freshwater tank (litre) | 2 x 100 |
| Level indicator (freshwater) | yes |
| Wheel steering | cable steering Steering system has been improved by adding bearingsystem. |
| Emergency tiller | yes |
| Extra info | Treadmaster on deck in 2015 treated with 'Treadcote' protection layer. |

ACCOMMODATION

| | |
|-----------------------|--|
| Cabins | 2 |
| Berths | 7 |
| Interior | teak |
| Floor | teak and holly |
| Saloon | yes |
| Headroom saloon (m) | yes |
| Heating | diesel ducted hot air Webasto (2009) |
| Chart table | yes |
| Aft Cabin | yes |
| Convertible berth | Bench in salon can be converted to a double bed and other side a single bed. |
| Galley | yes |
| Countertop | corian |
| Sink | stainless steel 2x |
| Cooker | calor gas 3 burner |
| Oven | yes |
| Microwave | yes |
| Fridge | Coolbox |
| Hot water system | 220V + engine Boiler |
| Water pressure system | electrical |
| Owners cabin | double bed Aftercabin |
| Bed length (m) | 1,85 |



| | |
|----------------|--------------------------------------|
| Wardrobe | hanging |
| Bathroom | en suite |
| Toilet | en suite |
| Toilet system | electric |
| Wash basin | in the bathroom |
| Shower | en suite |
| Guest cabin 1 | twin single Forecabin |
| Bed length (m) | 1,90 |
| Wardrobe | hanging |
| Bathroom | separate |
| Toilet | separate |
| Toilet system | electric |
| Wash basin | in the bathroom |
| Shower | separate |
| Guest cabin 2 | single bed Behind navigation station |
| Bed length (m) | 1,85 |

MACHINERY

| | |
|-----------------------|---------------------------|
| No of engines | 1 |
| Make | Volvo Penta |
| Type | 2003 HE BT |
| HP | 28,00 |
| kW | 20,58 |
| Fuel | diesel |
| Year installed | 1991 |
| Engine cooling system | freshwater heat exchanger |
| Drive | shaft |
| Engine controls | bowden cable |
| Gearbox | mechanical |
| Exhaust | watercooled |
| Propeller type | yes |



WESTERLY OCEANRANGER 38

| | |
|--------------------------|---|
| Propeller blades | yes |
| Propeller shaft material | stainless steel |
| Shaft lubrication | water Shaft lubrication seal has been replaced in 2017. |
| Electric bilge pump | yes |
| Electrical installation | 12 v /220 v |
| Batteries | yes |
| Start battery | 2014 |
| Service battery | 2013 |
| Battery charger | Mastervolt |
| Inverter | yes |
| Shorepower | with cable |

NAVIGATION

| | |
|-------------------|------------------------|
| Compass | yes |
| Depth sounder | Autohelm ST50 |
| Windset | Autohelm |
| VHF | Defect Shipmate RS8100 |
| Autopilot | Raymarine ST7002 |
| GPS | Philips |
| Navigation lights | 2017 |

EQUIPMENT

| | |
|------------------|-----------------|
| Fixed windscreen | yes |
| Sprayhood | yes |
| Bimini | yes |
| Cockpit cushions | yes |
| Boarding ladder | stainless steel |
| Anchor | yes |
| Anchor chain | yes |
| Windlass | manual Vetus |
| Sea railing | wire |



| | |
|----------------------------|------|
| Grab rail (superstructure) | teak |
| Pushpit | yes |
| Pulpit | yes |
| Radar reflector | yes |
| Fenders | yes |
| Mooring lines | yes |
| Radio-cd player | yes |
| Speakers in salon | yes |
| Clock - barometer | yes |

RIGGING

| | |
|-------------------------|-----------------|
| Rigging | sloop |
| Standing rigging | wire |
| Brand mast | Kemp |
| Material mast | aluminium |
| Spreaders | yes |
| Mainsail cover | Lazy bag system |
| Fully battened mainsail | yes |
| Genoa | yes |
| Genoa furler | yes |
| Backstay adjuster | yes |
| Boomvang | tackle |
| Genoa sheetwinches | yes |
| Halyard winches | yes |



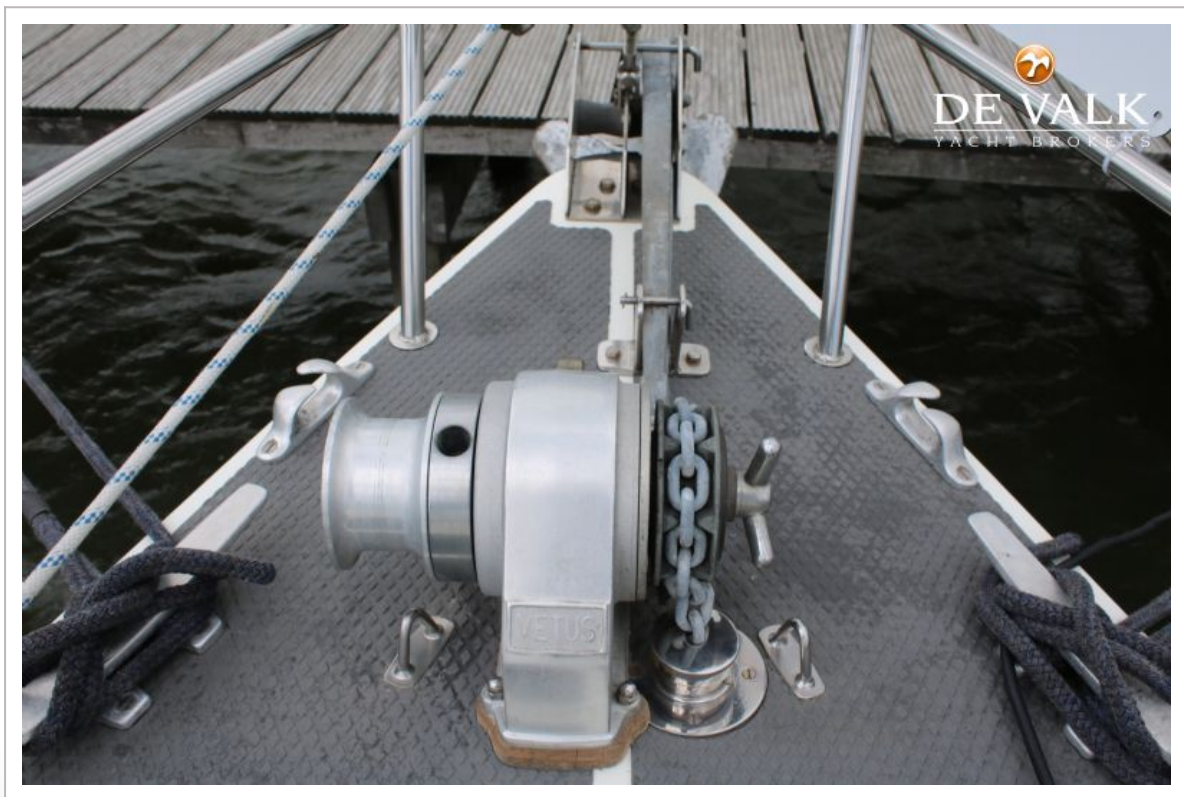
WESTERLY OCEANRANGER 38



WESTERLY OCEANRANGER 38



WESTERLY OCEANRANGER 38



WESTERLY OCEANRANGER 38



WESTERLY OCEANRANGER 38





WESTERLY OCEANRANGER 38



WESTERLY OCEANRANGER 38



WESTERLY OCEANRANGER 38



WESTERLY OCEANRANGER 38



WESTERLY OCEANRANGER 38



WESTERLY OCEANRANGER 38



WESTERLY OCEANRANGER 38



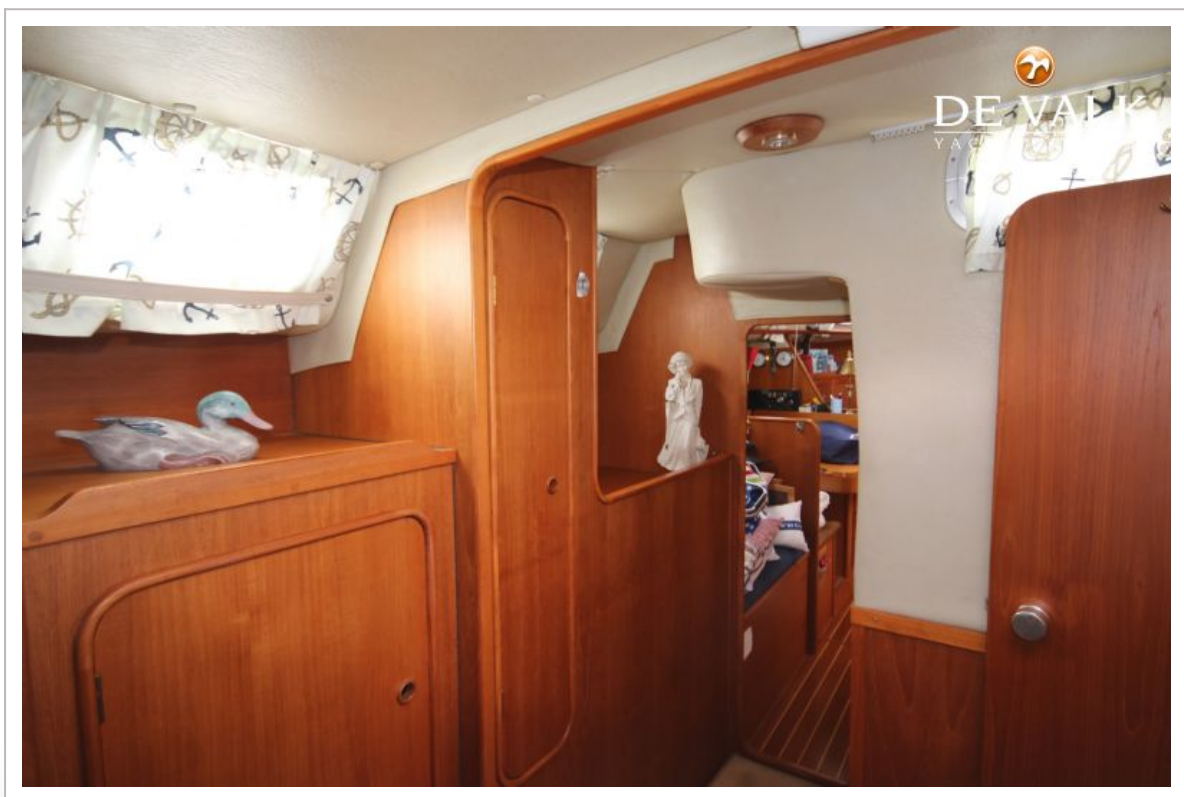
WESTERLY OCEANRANGER 38



WESTERLY OCEANRANGER 38



WESTERLY OCEANRANGER 38



WESTERLY OCEANRANGER 38



WESTERLY OCEANRANGER 38

