



BAVARIA 46 CRUISER



BAVARIA 46 CRUISER

BROKER'S COMMENTS

This Bavaria 46 Cruiser is designed by J&J. She has an excellent sail performance and handling. Combined with the four cabin layout she is the ideal ship for larger families who are looking for space, comfort and stay longer on board 'Sam Sing' is very complete with a spacious galley, bowthruster, heating, air conditioning, generator, washing machine electric winche and a headroom of 2.10M!

Sander van der Voorn

SPECIFICATIONS

Dimensions	14.40 x 4.35 x 1.85 (m)	Builder	Bavaria Yachtbau GmbH, Giebelstad
Built	2005	Cabins	4
Material	GRP	Berths	7
Engine(s)	1 x Volvo Penta D2-55 diesel	Hp/Kw	55.00 (hp), 40.42 (kw)
Asking price	sold (VAT)	Lying	at sales office

CONTACT

Sales office	De Valk Monnickendam B.V.	Telephone	+31 (0)299 65 63 50
Address	Hoogedijk 6 1145 PM Katwoude NL	E-mail	monnickendam@devalk.nl

DISCLAIMER

These particulars are given in good faith as supplied but cannot be guaranteed.



BAVARIA 46 CRUISER

GENERAL

Model	BAVARIA 46 CRUISER
Type	sailing yacht
LOA (m)	14,40
LWL (m)	12,20
Beam (m)	4,35
Draft (m)	1,85
Air draft (m)	19,20
Year built	2005
Builder	Bavaria Yachtbau GmbH, Giebelstad
Country	Germany
Designer	J & J Design
Displacement (t)	18
Ballast (tonnes)	cast iron 3,5
CE norm	A
Hull material	GRP
Hull colour	white
Hull shape	round-bilged
Keel type	fin keel
Superstructure material	GRP
Rubbing strake	wood
Deck material	GRP
Deck finish	non-skid moulded in
Superstructure deck finish	non-skid moulded in
Cockpit deck finish	non-skid moulded in
Antifouling (year)	2017-9
Dorades	1x
Window frame	aluminium
Window material	polycarbonate
Deckhatch	2x
Fuel tank (litre)	polyethylene 208 Litre



BAVARIA 46 CRUISER

Level indicator (fuel tank)	yes
Freshwater tank (litre)	polyethylene 460 litre
Level indicator (freshwater)	yes
Blackwater tank (litre)	polyethylene 100 litre
Blackwater tank extraction	deck extraction + uw line
Wheel steering	chain steering Lether steering wheel
Emergency tiller	yes

ACCOMMODATION

Cabins	4
Berths	6 + 2
Interior	mahogany
Floor	teak and holly
Headroom saloon (m)	2,10 m.
Heating	electric 220V Webasto
Heating 2	electric 220V Webasto
Air-conditioning	reverse cycle airco
Chart table	yes
Aft Cabin	2 x
Dinette	yes
Galley	yes
Countertop	corian
Sink	stainless steel 2 x
Cooker	ceramic Forceio 3 burns
Oven	yes
Fridge	1 x Coolmatic 1 x Waeco
Freezer	Coolmatic
Hot water system	220V + engine Quick Nautic Boiler
Water pressure system	electrical
Coffee maker	Senseo
Owners cabin	double bed



BAVARIA 46 CRUISER

Wardrobe	hanging and shelves
Bathroom	separate
Toilet	separate
Toilet system	manual Jabsco
Wash basin	in the bathroom
Shower	separate
Guest cabin 1	double bed
Wardrobe	drawers and shelves
Bathroom	shared
Toilet	shared
Toilet system	manual Jabsco
Wash basin	in the bathroom
Shower	shared
Guest cabin 2	double bed
Wardrobe	drawers and shelves
Washing machine	Electrolux Energie A

MACHINERY

No of engines	1
Make	Volvo Penta
Type	D2-55
HP	55,00
kW	40,42
Fuel	diesel
Year installed	2005
Engine hours	3800
Engine cooling system	freshwater heat exchanger
Drive	sail-drive
Saildrive seal	2015
Engine controls	bowden cable
Gearbox	hydraulic



BAVARIA 46 CRUISER

Bowthruster	electric Sidepower 100KG
Exhaust	watercooled
Manual bilge pump	yes
Electric bilge pump	yes
Bilge alarm	yes
Electrical installation	12V/220V
Generator	4 kw Onan
Batteries	yes
Start battery	1 x 55Ah
Service battery	5 x 200AH
Bowthruster battery	55Ah with separate charger
Battery charger/inverter	Victron Multi plus 12v 3000W (2015)
Shorepower	with cable
Extra info	Second charger Victron energie 12 v

NAVIGATION

Compass	2 x
Electric compass	In plotter
Depth sounder	Raytheon ST60
Log	Raytheon ST60
Windset	Raytheon ST60+
VHF	Raytheon 240E 2 x
VHF handheld	Raymarine Ray 101
Autopilot	Raytheon ST 6001
Radar	Raytheon 2 kw
Plotter/GPS	Raymarine C80 + spare plotter
Navtex	Furuno NX 300
AIS receiver	CSB Class B
Navigation lights	yes

EQUIPMENT



BAVARIA 46 CRUISER

Sprayhood	2013
Bimini	2013
Cockpit cushions	yes
Cockpit table	yes
Bathing platform	yes
Boarding ladder	stainless steel
Gangway	yes
Deck shower	yes
Anchor	CQR Plough
Anchor chain	Stainless steel
Windlass	electrical Lofrans
Dinghy	inflatable
Outboard	Honda 4 stroke 2,3 HP 2007
Outboard support	yes
Sea railing	wire
Grab rail (superstructure)	stainless steel
Life raft (pers)	container 6
Lifejackets	yes
Safety lines on deck	yes
Fenders	yes
Mooring lines	yes
TV	Neov(operation unknown)
TV receiver	(operation unknown)
Satellite	(operation unknown)
Radio-cd player	Kenwood W3037
DVD player	yes
iPod connection	yes
Cockpit speakers	yes
Speakers in salon	yes
Clock - barometer	Barometer Altitude
Fire extinguisher	2x



BAVARIA 46 CRUISER

RIGGING

Rigging	sloop
Standing rigging	wire
Brand mast	Seldén
Material mast	aluminium
Spreaders	2x
Mainsail	2016
Stoway mast	yes
Genoa	Tri optimaal 2014
Genoa furler	Furlex 300S
Reefing System	main in-mast furling
Backstay adjuster	mechanical
Boomvang	gasspring Rodkick
Primary sheet winch	2x electric Lewmar 50
Secondary sheet winch	2x Lewmar 40



BAVARIA 46 CRUISER



BAVARIA 46 CRUISER



BAVARIA 46 CRUISER



BAVARIA 46 CRUISER



BAVARIA 46 CRUISER



BAVARIA 46 CRUISER



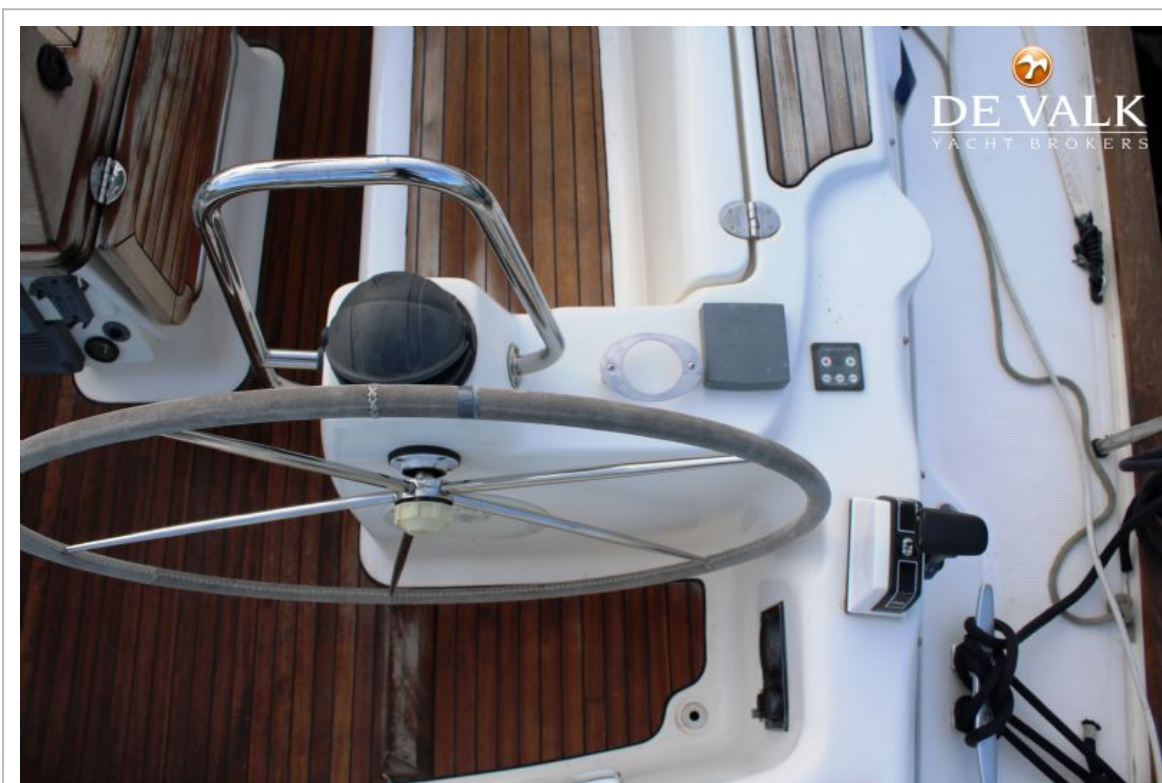
BAVARIA 46 CRUISER



BAVARIA 46 CRUISER



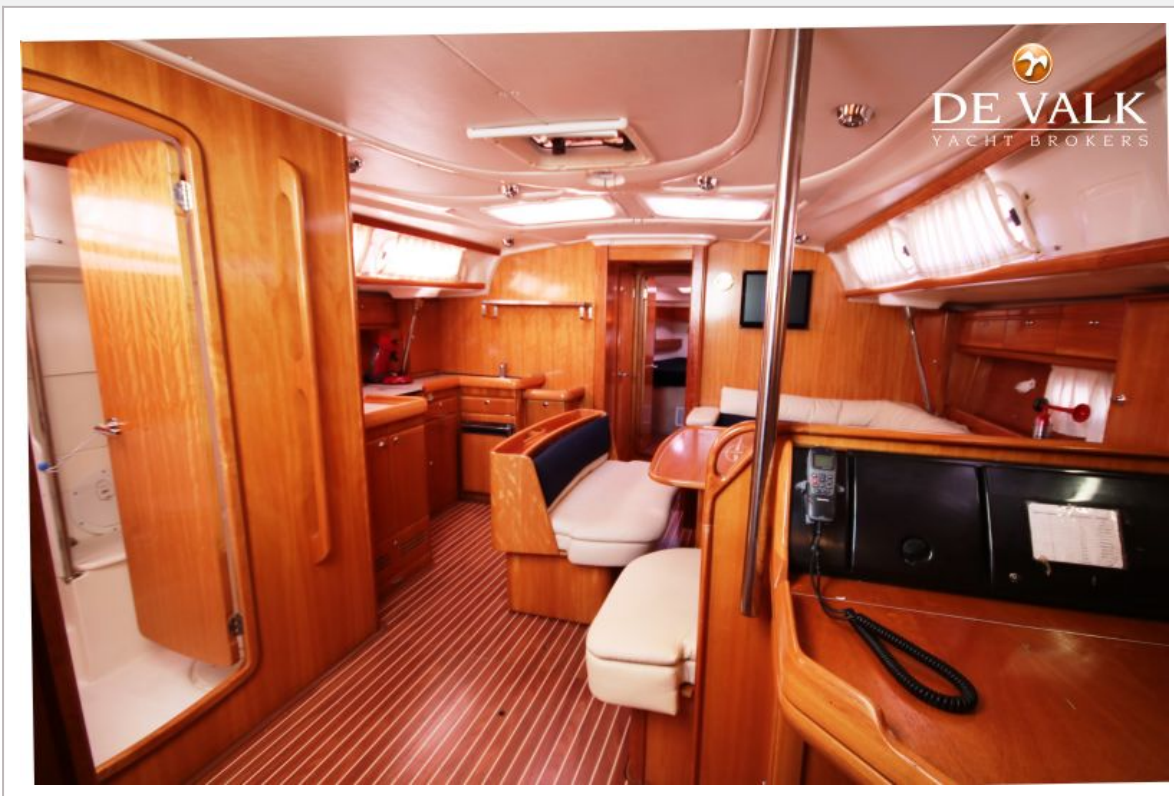
BAVARIA 46 CRUISER



BAVARIA 46 CRUISER



BAVARIA 46 CRUISER



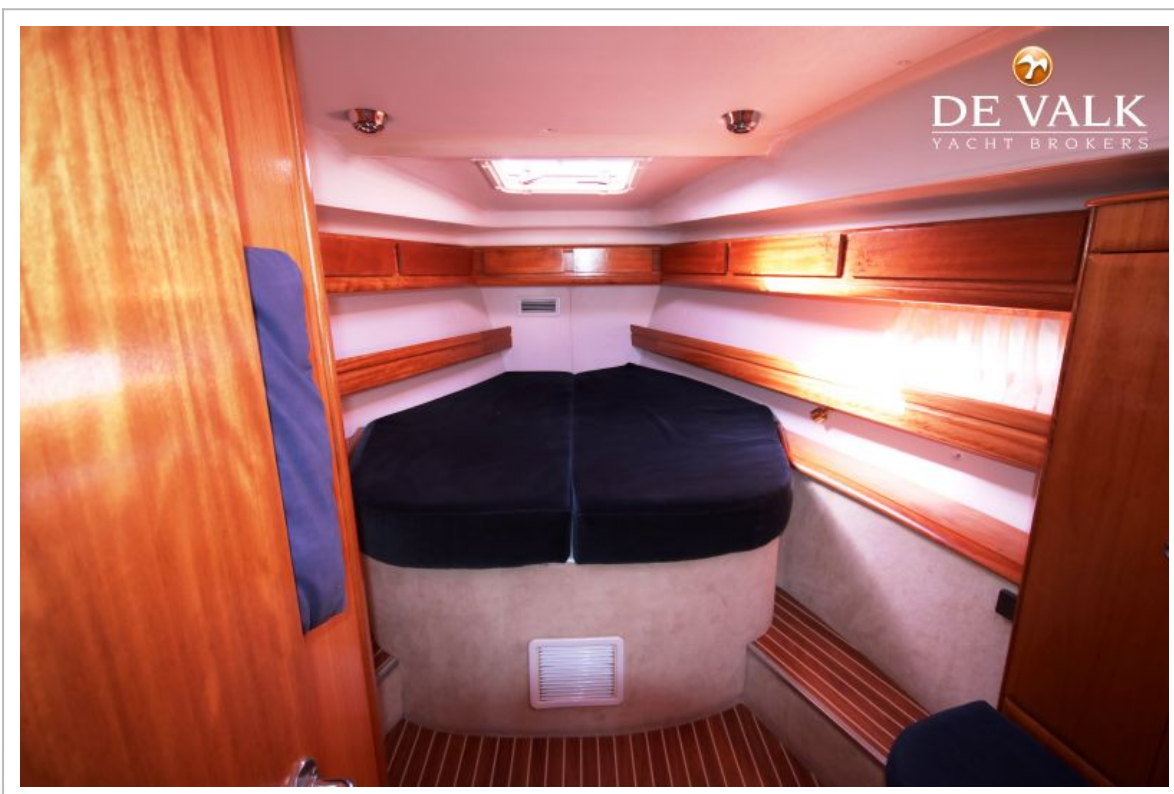
BAVARIA 46 CRUISER



BAVARIA 46 CRUISER



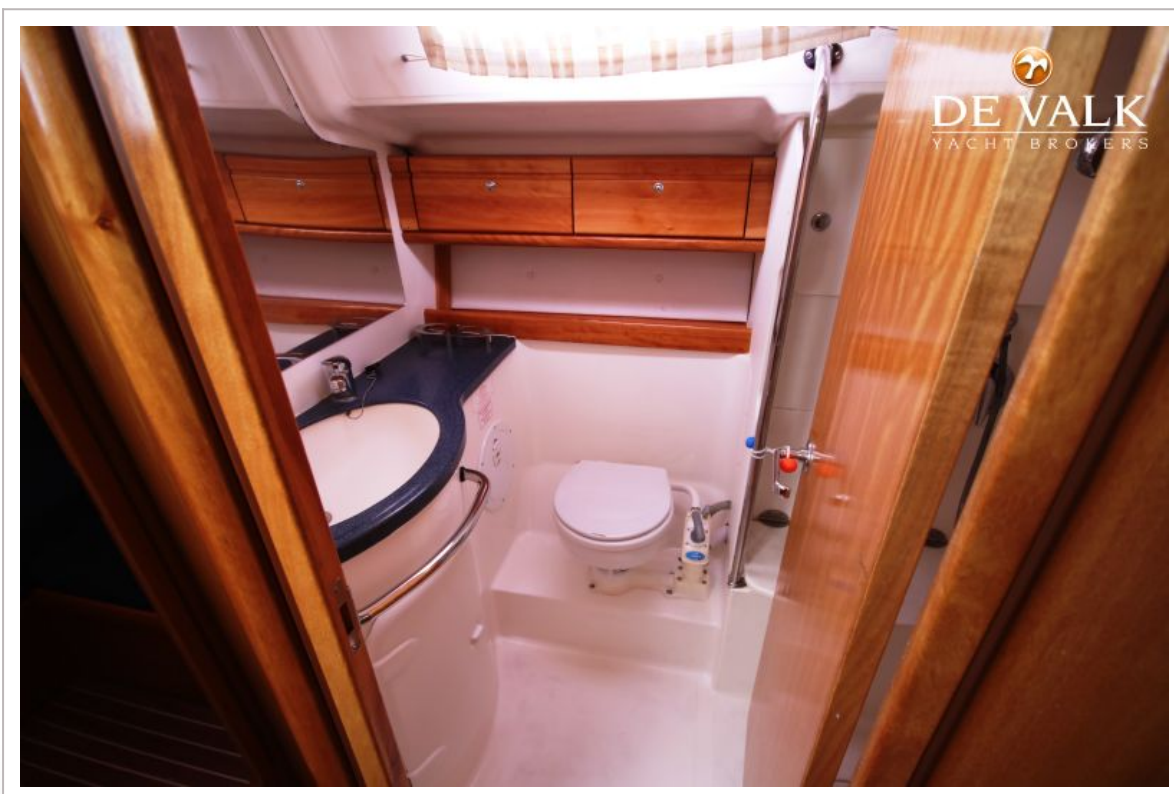
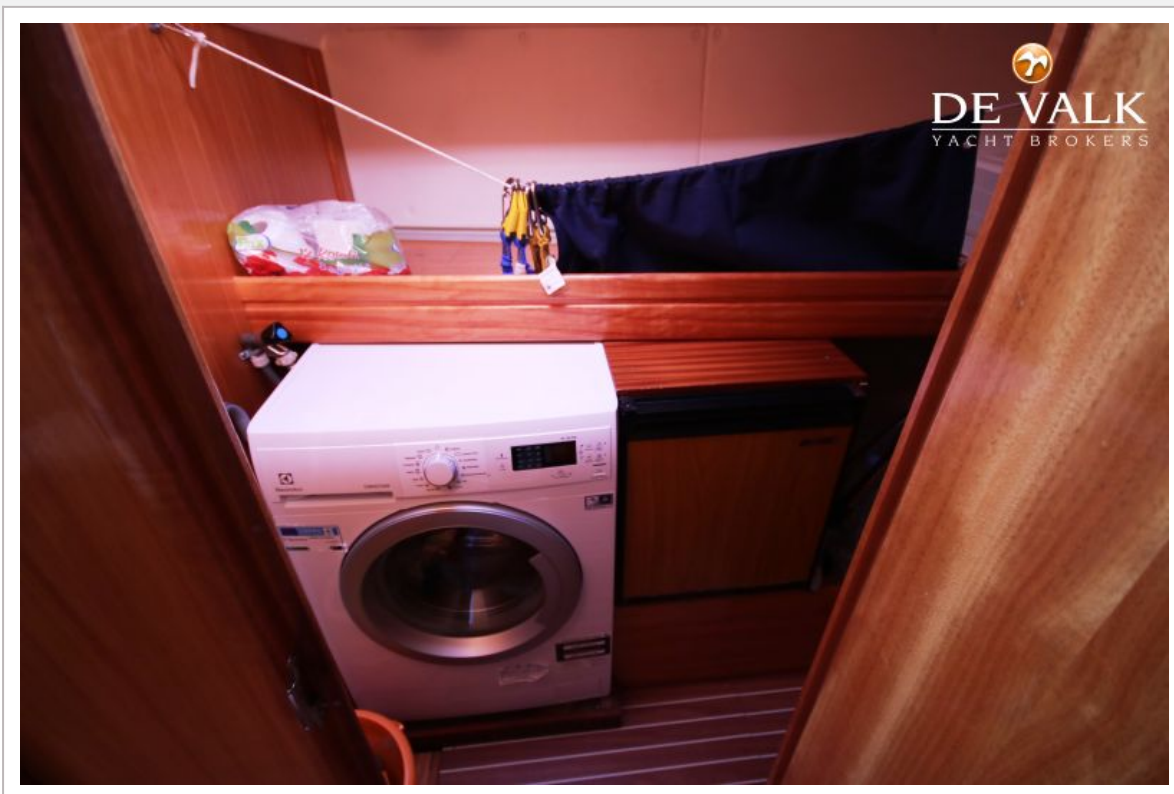
BAVARIA 46 CRUISER



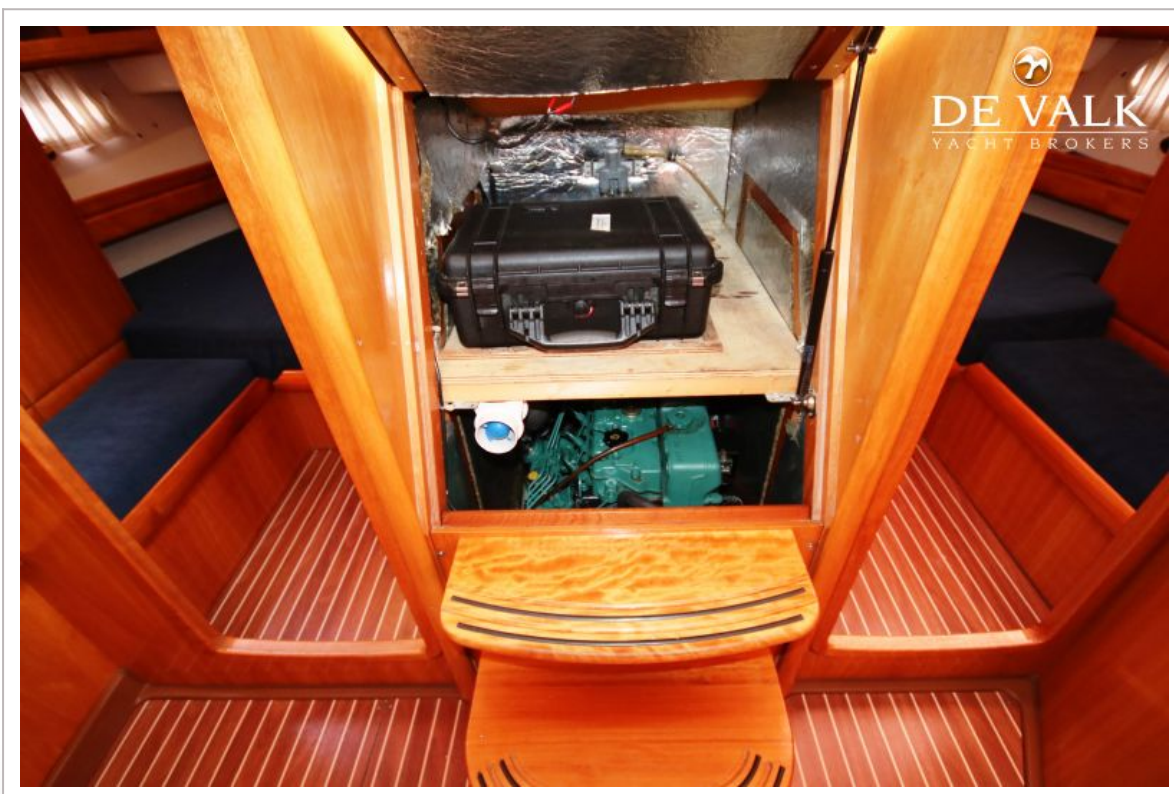
BAVARIA 46 CRUISER



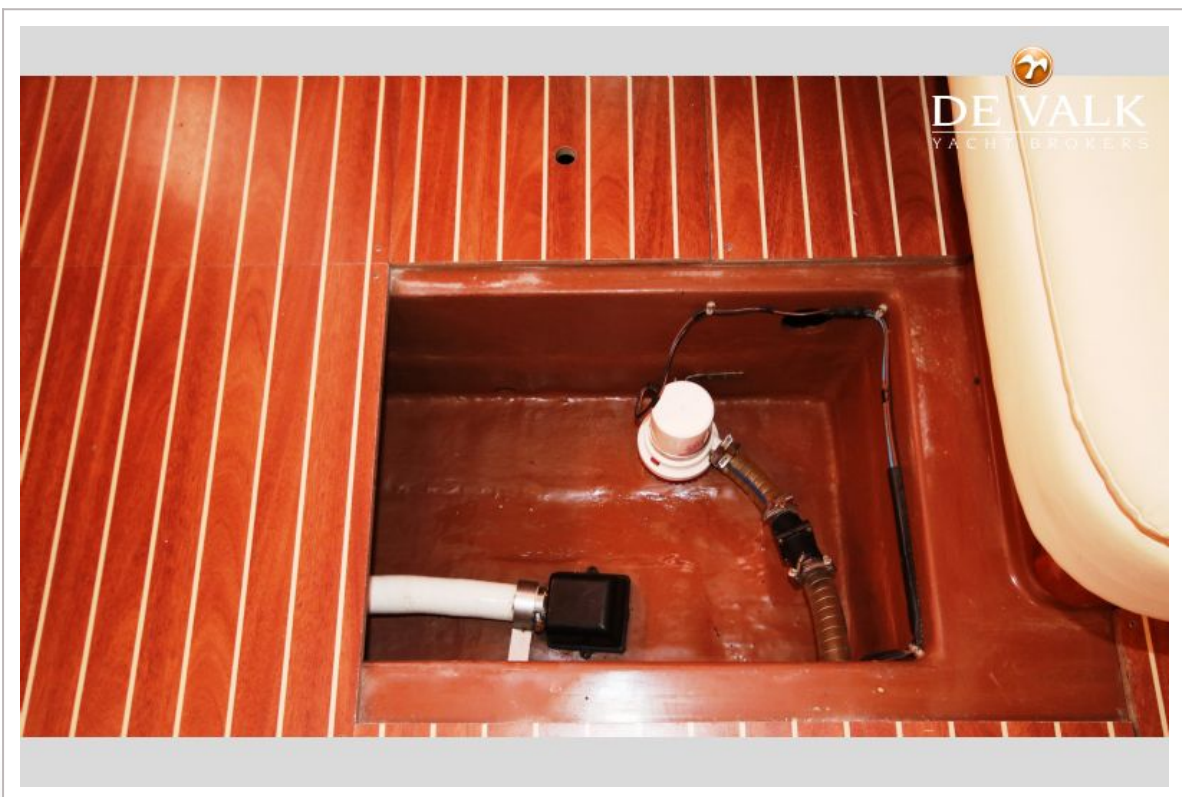
BAVARIA 46 CRUISER



BAVARIA 46 CRUISER



BAVARIA 46 CRUISER



BAVARIA 46 CRUISER

