



DE VALK
YACHT BROKERS



DE VRIES LENTSCH SY 1385



DE VALK
YACHT BROKERS

BROKER'S COMMENTS

This beautiful yacht, is designed by Oehlmann and built at the famous De Vries Lentsch yard 'Het Fort' . Owned by her current owner since 1981 ! Comfortable flush-deck in combination with a large sheltered cockpit and doghouse with panoramic view and 2nd helmsman position make this concept unique. Her interior with 2 cabins and leather sofa's breathes a rich, semi formal atmosphere. She is the ideal classic Gentleman's yacht for short-handed in-land and open sea cruises. She can be seen in our sales marina of Katwoude.

Sander van der Voorn

SPECIFICATIONS

Dimensions	13.85 x 3.85 x 1.85 (m)	Builder	Royal Beijnes, Het Fort de Vries Lentsch
Built	1968	Cabins	2
Material	Steel	Berths	7
Engine(s)	1 x Steyr M16 236B188,0 diesel	Hp/Kw	212.00 (hp), 155.82 (kw)
Asking price	sold (VAT)	Lying	at sales office

CONTACT

Sales office	De Valk Monnickendam	Telephone	+31 299 65 63 50
Address	Hoogedijk 6 1145 PM Katwoude The Netherlands	E-mail	monnickendam@devalk.nl

DISCLAIMER

These particulars are given in good faith as supplied but cannot be guaranteed.



GENERAL

Model	DE VRIES LENTSCH SY 1385
Type	sailing yacht
LOA (m)	13,85
LWL (m)	10,67
Beam (m)	3,85
Draft (m)	1,85
Air draft (m)	17,85
Headroom (m)	1,95
Year built	1968
Builder	Royal Beijnes, Het Fort de Vries Lentsch
Country	The Netherlands
Designer	Kurt Oehlmann, Travemunde
Displacement (t)	18
Ballast (tonnes)	lead 3
Gross tonnage	15
Net tonnage	4
Hull material	steel
Hull colour	white
Hull thickness (mm)	5 - 4 - 3 mm
Hull shape	round-bilged
Keel type	long keel
Superstructure material	teak Massive
Rubbing strake	steel
Deck material	steel 3 mm
Deck finish	teak 16 mm plywood + 15 mm teak, dry seam pieces
Antifouling (year)	2016-2017
Dorades	3 x stainless steel
Window material	tempered glass
Deckhatch	2
Portholes	Bronze Chrome frame



Fuel tank (litre)	steel 800
Fuel tank 2 (litre)	225 + 325
Level indicator (fuel tank)	gauge glass
Fuel daytank (litre)	2 x 75
Freshwater tank (litre)	500 + 150 + 230 + 200
Blackwater tank (litre)	polyethylene 60
Blackwater tank extraction	deck extraction + pump
Greywater tank (litre)	60
Wheel steering	hydraulic
Inside helm position	Elctr./ hydraulic
Emergency tiller	yes

ACCOMMODATION

Cabins	2
Berths	7
Interior	teak
Floor	teak and holly
Open cockpit	yes
Doghouse	yes
Saloon	yes
Headroom saloon (m)	1,95
Heating	diesel ducted hot air Webasto 500
Navigation center	under doghouse
Chart table	under doghouse
Dining room	yes
Dinette to convert into berth	yes
Sliding door to cockpit	yes
Galley	yes
Countertop	Duropal
Sink	stainless steel
Cooker	calor gas Taylors 2 burners and grill plate



Oven	yes
Extractor	yes
Fridge	yes
Hot water system	220V + engine
Water pressure system	electrical
Kettle	yes
Owners cabin	double bed + single bed
Bed length (m)	1,95
Wardrobe	hanging and drawers
Bathroom	separate
Toilet	shared
Toilet system	Sealand Vacuumflush + pump out
Wash basin	in the bathroom
Shower	shared
Guest cabin 1	double bed

MACHINERY

No of engines	1
Make	Steyr
Type	M16 236B188,0
HP	212
kW	155,82
Fuel	diesel
Year installed	2000
Maximum speed (kn)	8
Cruising speed (kn)	7
Consumption (l/hr)	6
Range (nm)	1000
Engine hours	1400
Engine cooling system	freshwater heat exchanger
Drive	shaft



Shaft seal	Double seals
Engine controls	bowden cable
Gearbox	hydraulic Hurth HWS 630 1:2,5
Exhaust	watercooled
Thrust bearing	Double seals
Propeller type	feathering Max prop 23 Inch
Propeller blades	3 Bronze Nr. 34221
Propeller shaft material	stainless steel 40 mm Federal / v Voorden OA 4061
Shaft lubrication	oilbath
Electric bilge pump	yes
Bilge alarm	yes
Electrical installation	12/24/220 Volt
Generator	silent separator Nothern Lights M673 4,8 kW
Running hours generator	112
Batteries	2002 - 2007
Start battery	12 V 150 Ah seaworthy stowed in stern compartment
Service battery	2 x 24 Volt consisting of 4 x 6 V 180 Ah seaworthy below salon
Windlass battery	1 x 12 V - 150 Ah gel
Battery monitor	Mastervolt energy controle
Battery charger	Mastervolt chargemaster 24/60 Ah - 3
Inverter	Mastervolt Mass 24/2500
Diode battery combiners	yes
Shorepower	with cable

NAVIGATION

Compass	CP2
Electric compass	B & G
Depth sounder	B & G
Log	B & G
Windset	B & G
Autopilot	Radio Zeeland Delta 510



Rudder angle indicator	yes
Radar	Furuno
GPS	B & G 330 hydra
Plotter	Cobra Marine
Plotter/GPS	Furuno GP 32

EQUIPMENT

Fixed windscreen	Lexan (Rhigo)
Fixed hardtop	yes
Cockpit cushions	yes
Cockpit table	yes
Boarding ladder	aluminum
Anchor	Pool 60 kg.
Anchor chain	50 mtr. 10 mm
Anchor 2	Fisherman 20 kg.
Windlass	electrical Simpson-Lawrence Francis E 400
Davits	stainless steel
Davits controls	manual
Sea railing	Massive Stainless + steel wire
Railing side opening gates	yes
Pushpit	stainless steel
Pulpit	stainless steel
Safety lines on deck	yes
Wiper	yes
Horn	electric
Radar reflector	Furuno
Spare parts	Filters
Radio-cd player	yes
Speakers in salon	yes
Clock - barometer	yes



RIGGING

Rigging	ketch-cutter
Standing rigging	Stainless Steel wire, completely renewed 2007
Brand mast	Proctor
Material mast	aluminium coated White
Spreaders	2
Mainsail	Arjen Kooij 40m2 Triradial 340g/sqm. (spare North 10 oz Dracron)
Mainsail cover	yes
Battcars	yes
Fully battened mainsail	yes
Cutterstay	De Vries 12m2 400 n2
Mizzen	Arjen Kooij 10 sqm 340 g/sqm(North 8 oz battened spare)
Mizzen sailcover	yes
Mizzen staysail	yes
Genoa	De Vries 50m2 340/310 g/sqm. Biradial
Genoa furler	Harken
Genoa cover	yes
Cutter furler	Harken MK III
Gennaker	North Sails 132 sqm. True Radial 1,5 Oz 132 gr with cover
Staysail	De Vries 12 sqm TQ 400 g/sqm
Staysail furler	Harken
Removable innerforestay	yes
Boomvang	gasspring Proctor
Primary sheet winch	2 x Enkes
Secondary sheet winch	2 x Harken, 1 electric 40 2 speed
Genoa sheetwinches	2 x Enkes
Halyard winches	Enkes - Harken
Spi-pole	aluminium 2 x
Extra info	Completely renewed standing rigging 2007.
Extra info	R.N.S wiring Sta-Lok tensioners



DE VRIES LENTSCH SY 1385



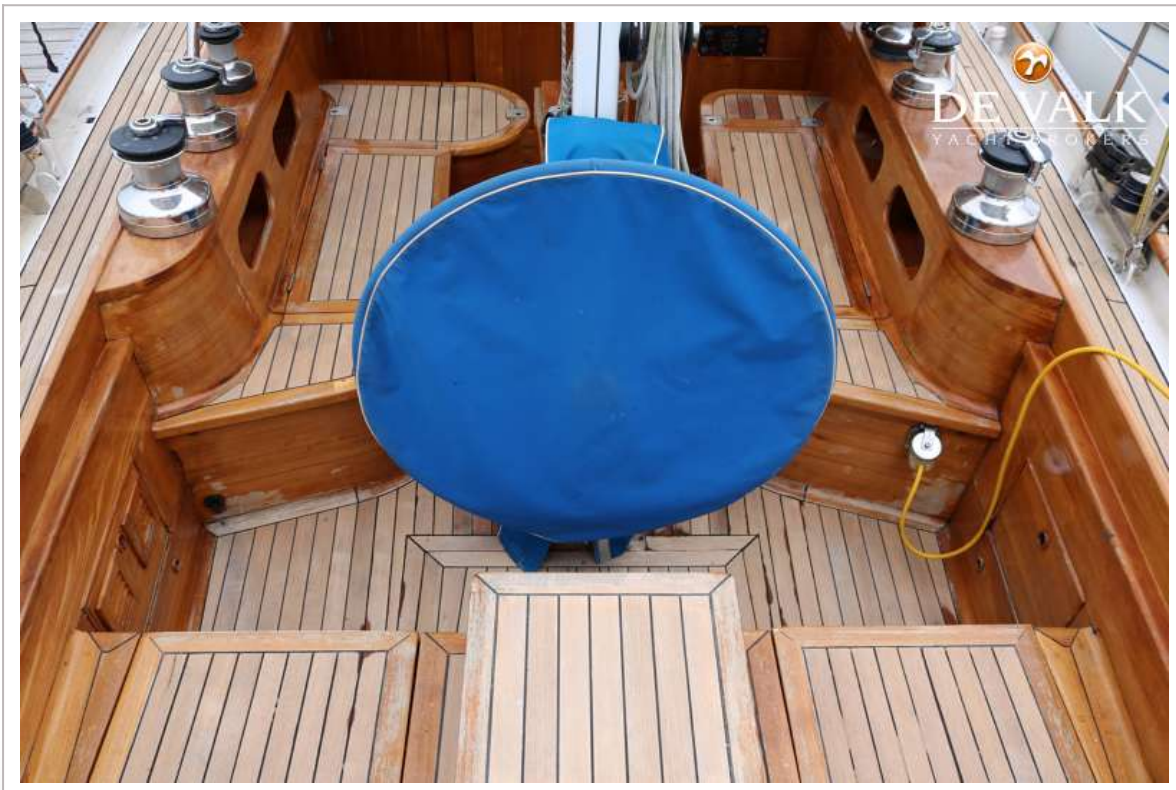
DE VRIES LENTSCH SY 1385



DE VRIES LENTSCH SY 1385



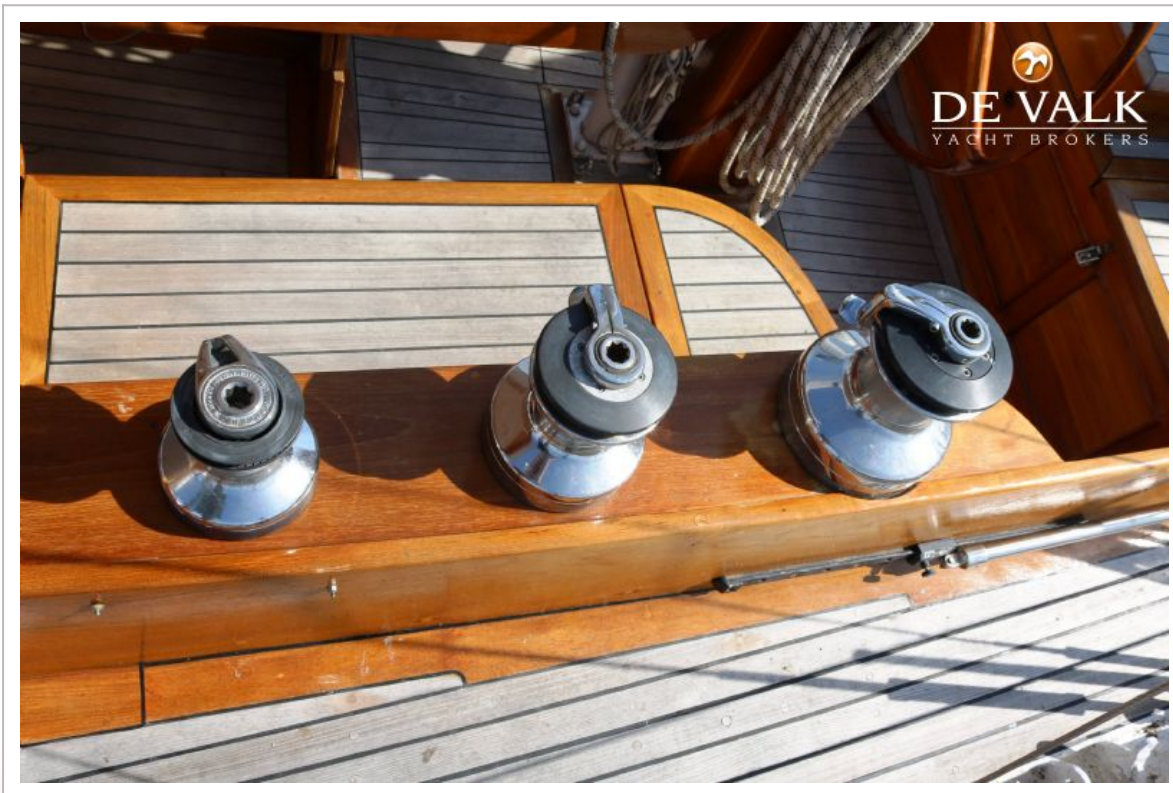
DE VRIES LENTSCH SY 1385



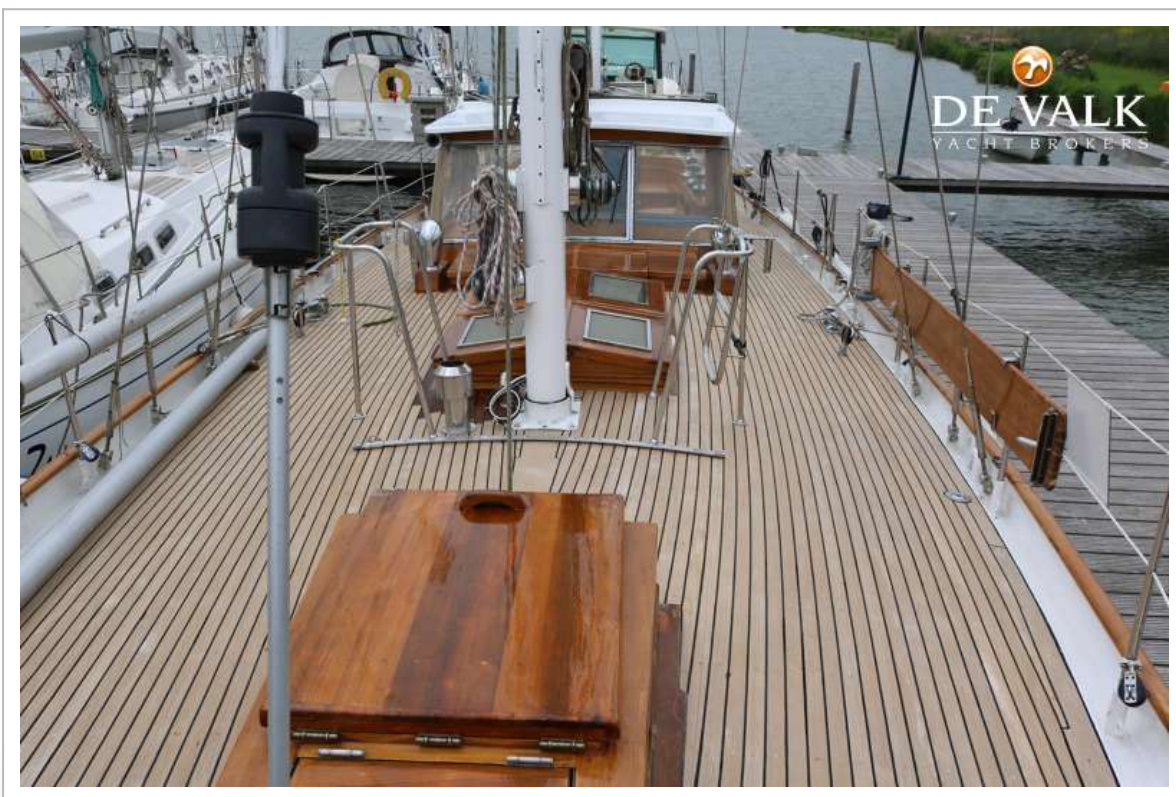
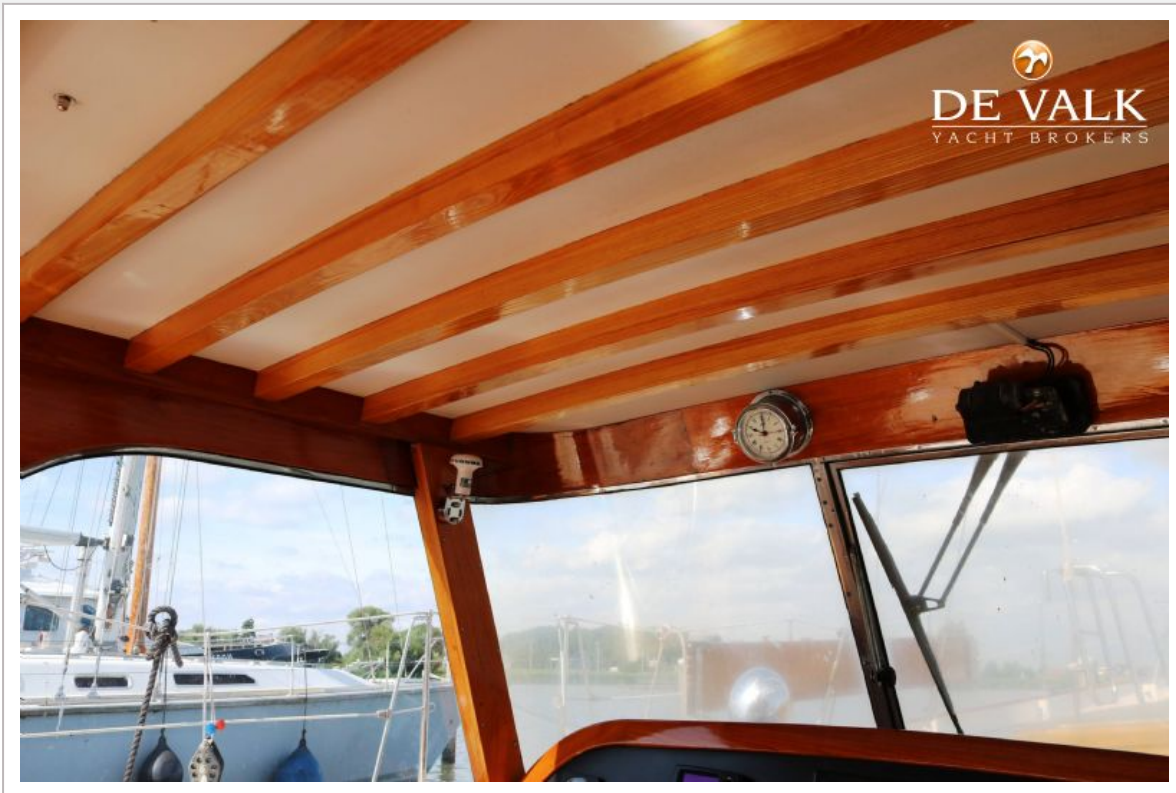
DE VRIES LENTSCH SY 1385



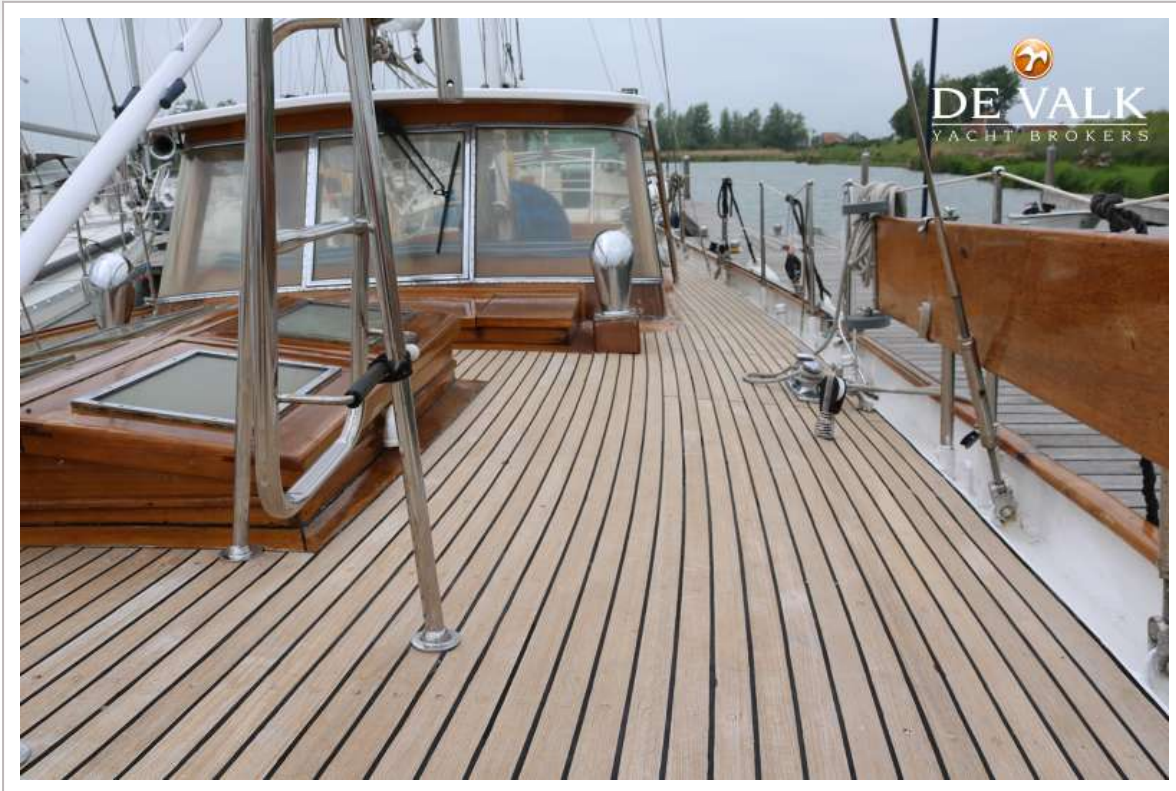
DE VRIES LENTSCH SY 1385



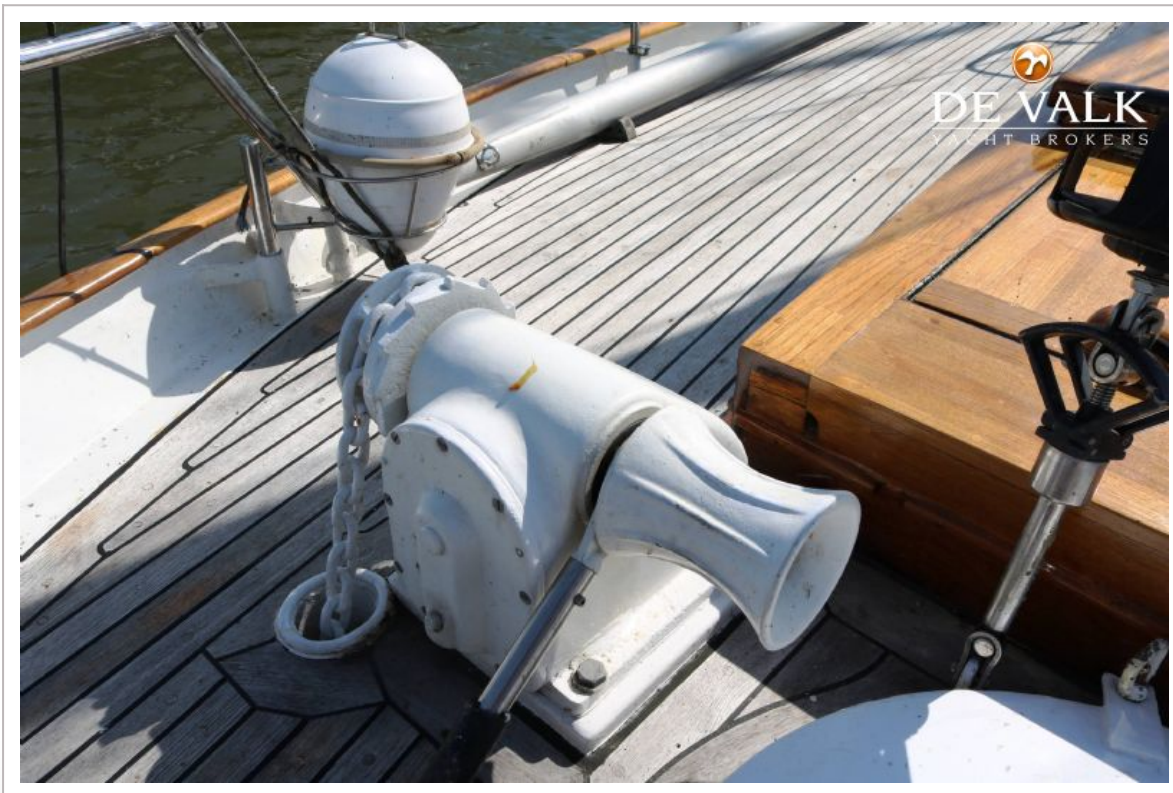
DE VRIES LENTSCH SY 1385



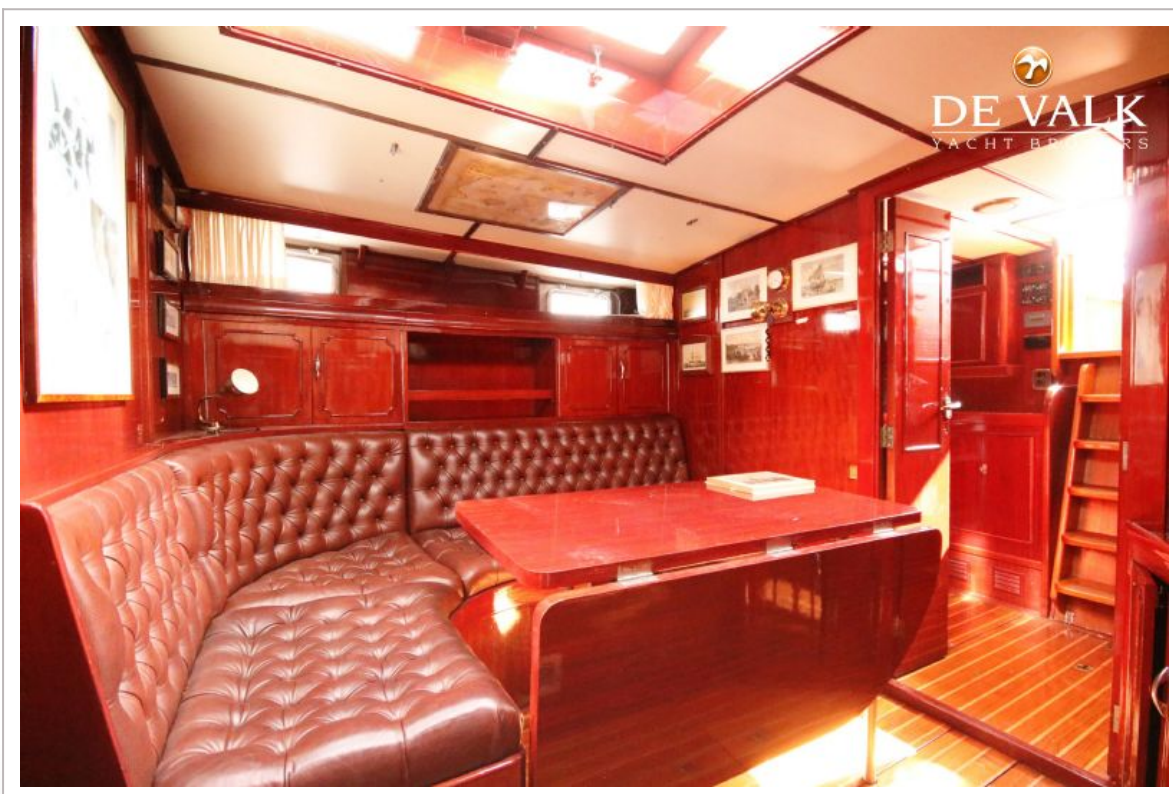
DE VRIES LENTSCH SY 1385



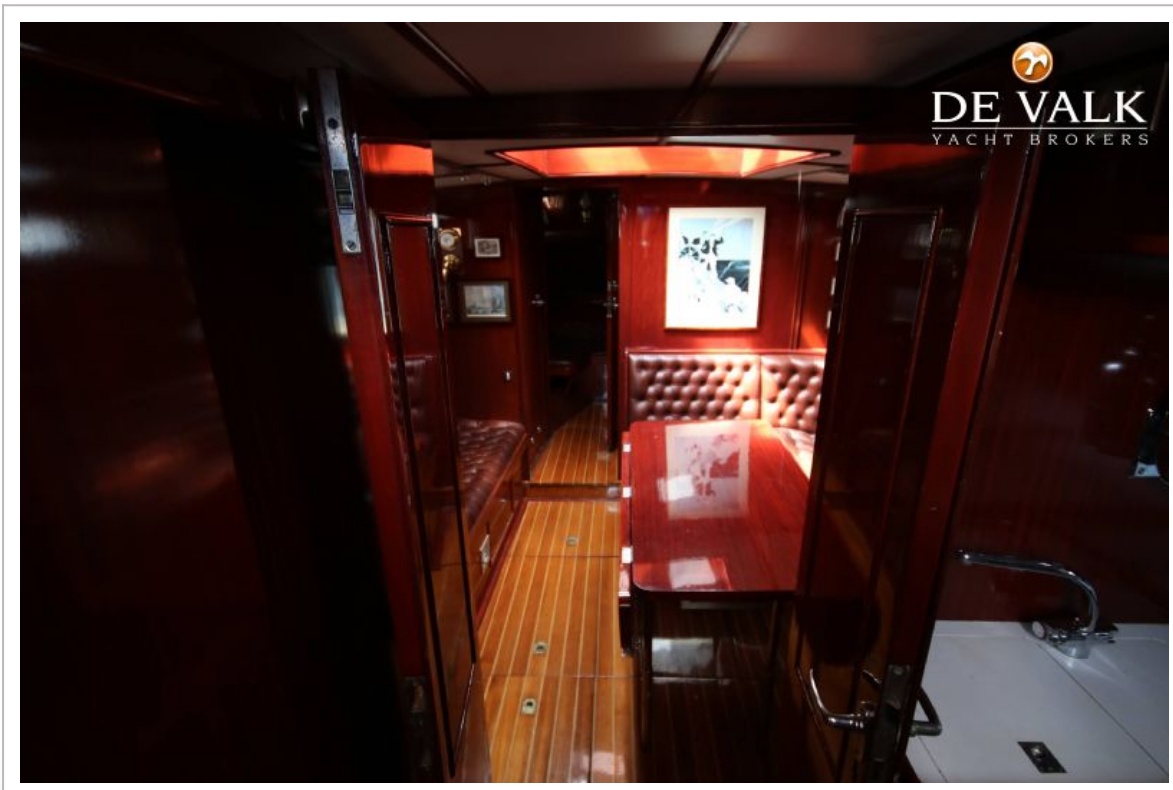
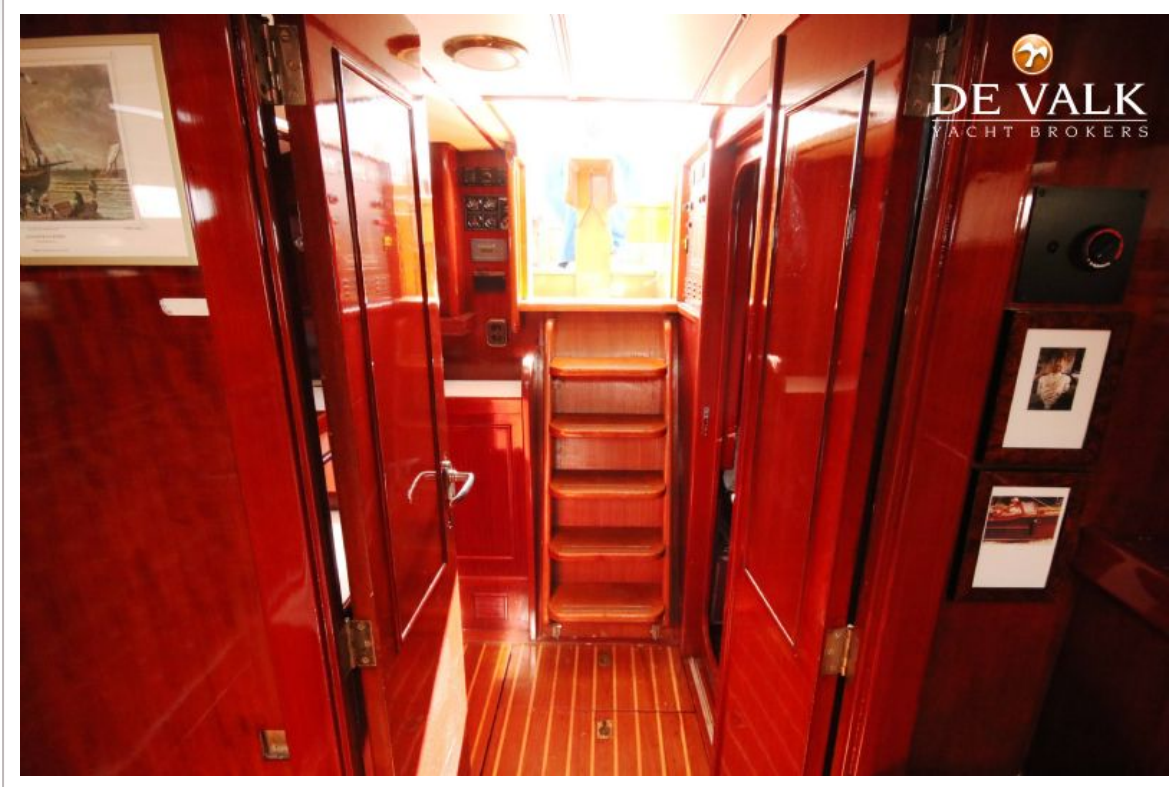
DE VRIES LENTSCH SY 1385



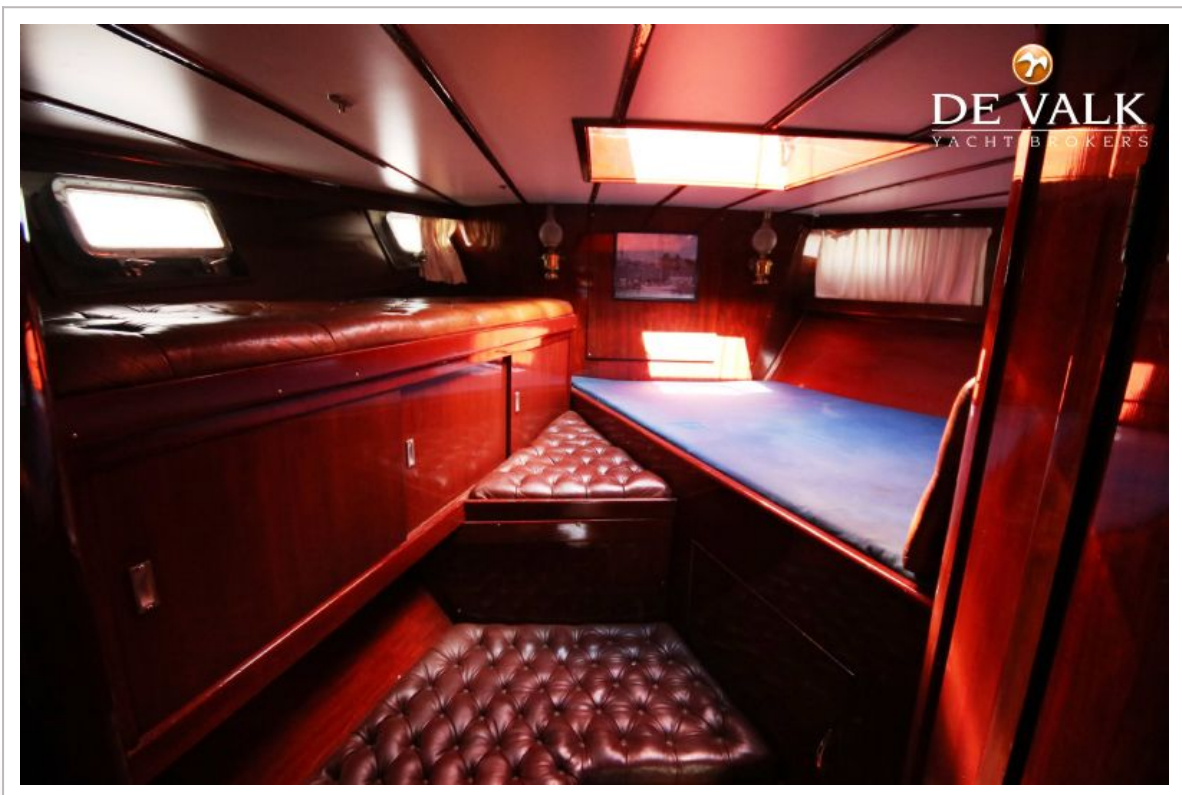
DE VRIES LENTSCH SY 1385



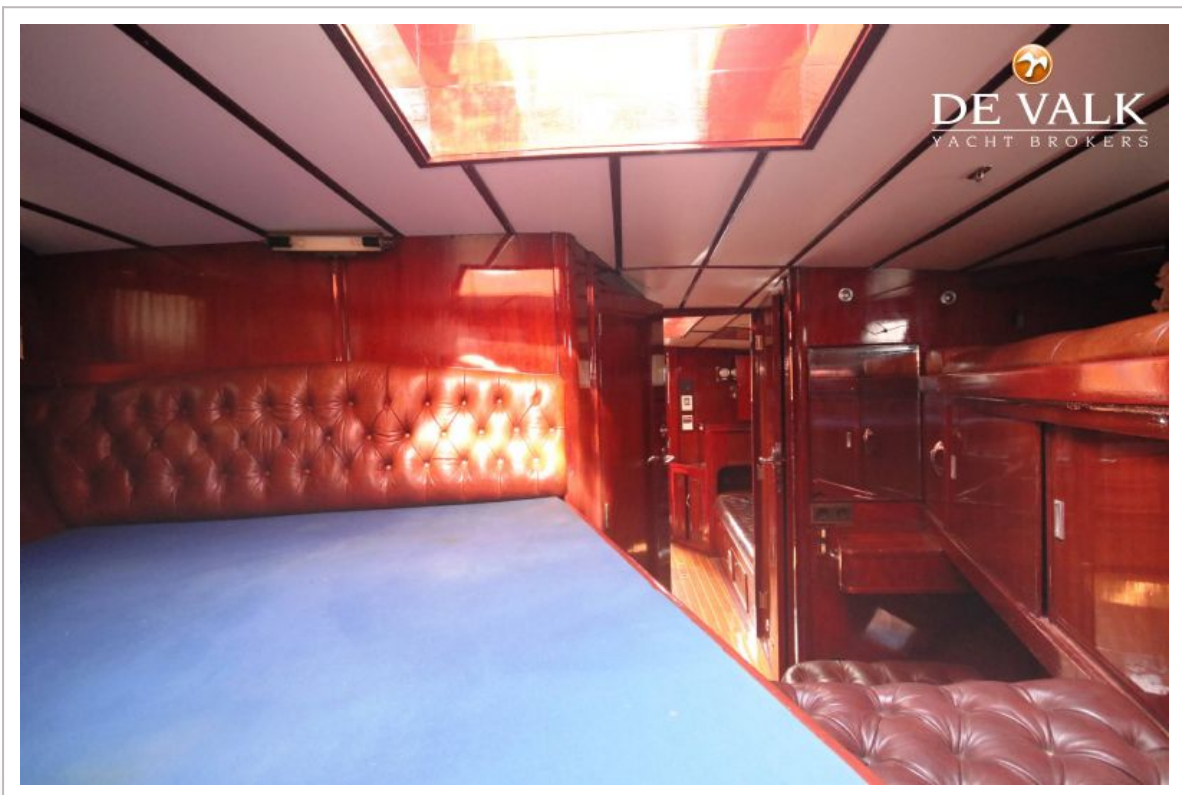
DE VRIES LENTSCH SY 1385



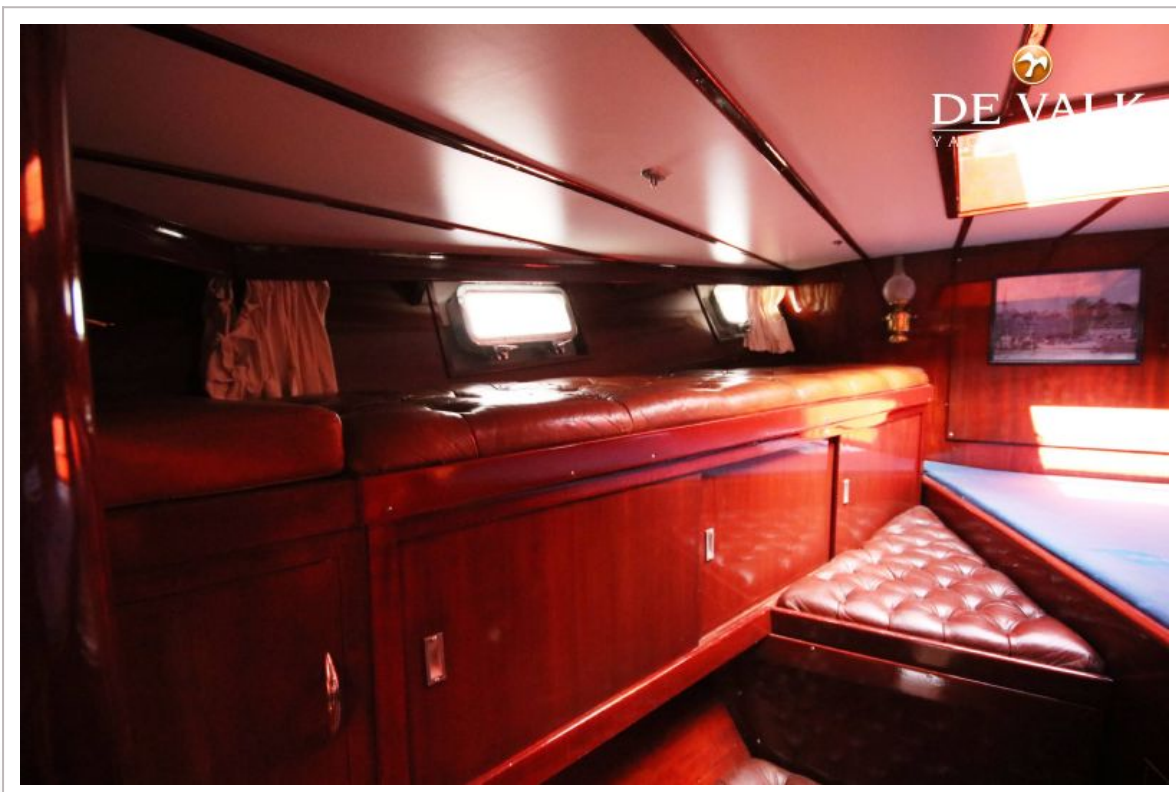
DE VRIES LENTSCH SY 1385



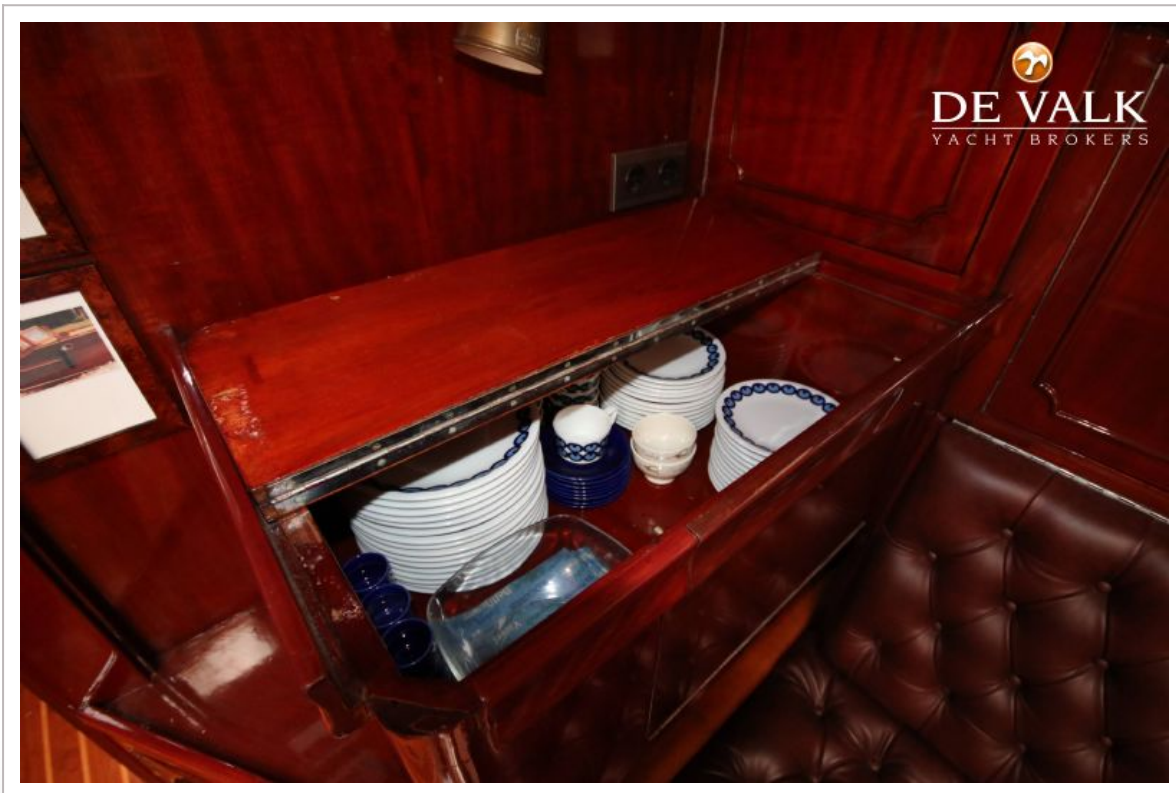
DE VRIES LENTSCH SY 1385



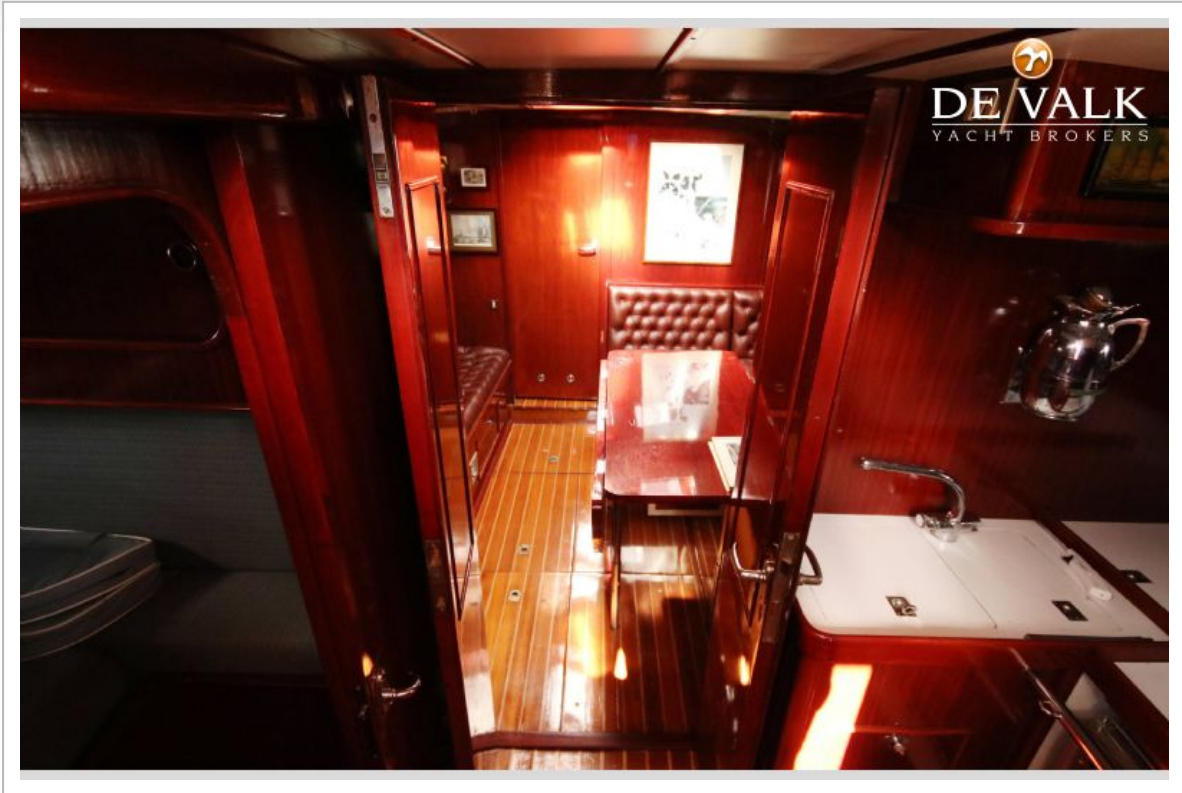
DE VRIES LENTSCH SY 1385



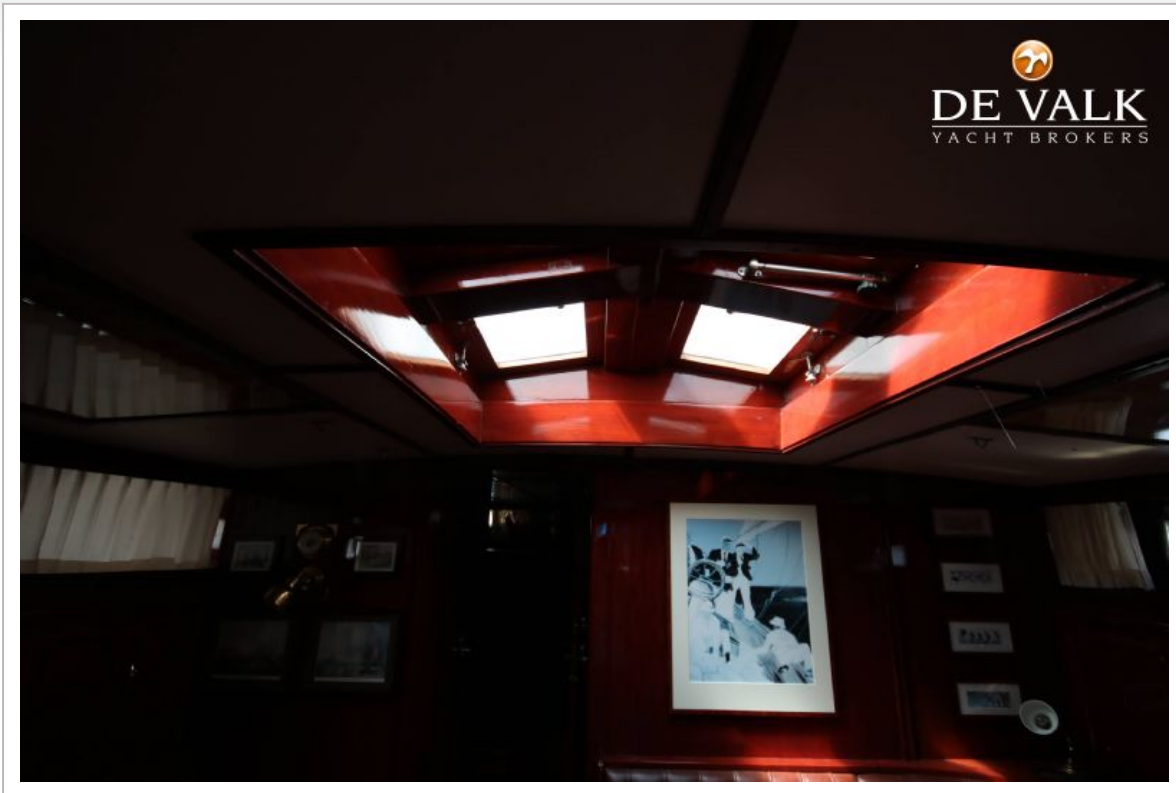
DE VRIES LENTSCH SY 1385

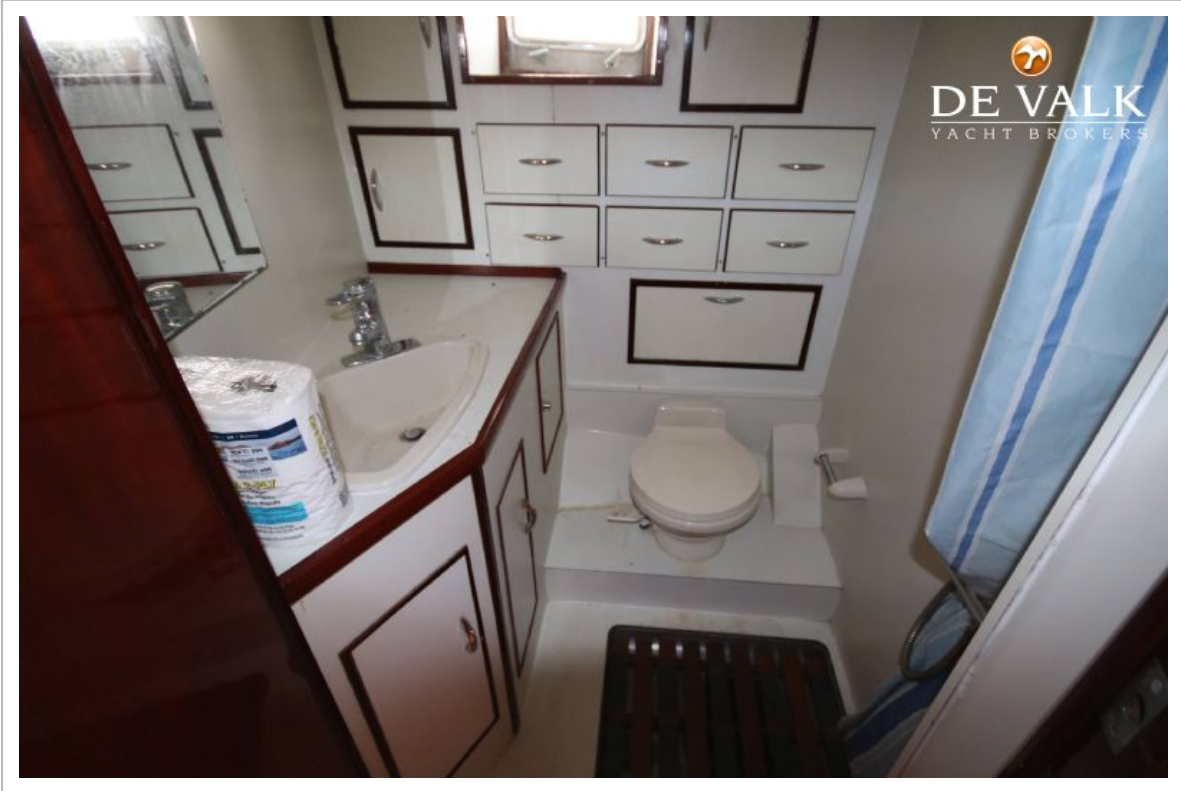


DE VRIES LENTSCH SY 1385



DE VRIES LENTSCH SY 1385





DE VRIES LENTSCH SY 1385

