



DE VALK
YACHT BROKERS



© FRANK HAENDLER PHOTOGRAPHY

FREEDOM 44



DE VALK
YACHT BROKERS

BROKERAGE | CHARTER | BERTHS | FINANCE | INSURANCE | YACHT MANAGEMENT

BROKER'S COMMENTS

The current owner brought the vessel over from America about 20 years ago. It has been in his possession ever since. The Freedom 44 first hit the market in the early 1980s, its flush-deck design provides more cabin space. The Freedom 44 "is a beautiful, fast cruiser that is easy for two to handle, but also accommodates the whole family". There is an active association of Freedom enthusiasts. This beautiful lady is for sale in our sales marina.

Harald Padberg

SPECIFICATIONS

Dimensions	13.41 x 3.66 x 1.83 (m)	Builder	Tillotson Pearson Inc,
Built	1982	Cabins	2
Material	GRP	Berths	6
Engine(s)	1 x Perkins 4.108 diesel	Hp/Kw	50.00 (hp), 36.75 (kw)
Asking price	sold (VAT)	Lying	at sales office

CONTACT

Sales office	De Valk Monnickendam B.V.	Telephone	+31 (0)299 65 63 50
Address	Hoogedijk 6 1145 PM Katwoude NL	E-mail	monnickendam@devalk.nl

DISCLAIMER

These particulars are given in good faith as supplied but cannot be guaranteed.



GENERAL

Model	FREEDOM 44
Type	sailing yacht
LOA (m)	13,41
LWL (m)	12,04
Beam (m)	3,66
Draft (m)	1,83
Headroom (m)	1,90
Year built	1982
Builder	Tillotson Pearson Inc,
Country	U.S.A.
Designer	Gary Hoyt/H. Herreshoff
Displacement (t)	11
Ballast (tonnes)	lead 3,175
CE norm	NA
Hull material	GRP
Hull shape	S-bilged
Keel type	fin keel
Superstructure material	GRP
Rubbing strake	stainless steel
Deck material	GRP
Deck finish	teak
Superstructure deck finish	teak
Deckhatch	5
Portholes	9
Fuel tank (litre)	aluminium 397
Level indicator (fuel tank)	yes
Freshwater tank (litre)	polyethylene 454
Wheel steering	cable steering
Extra info	2 x aluminium gas tanks in bunker



ACCOMMODATION

Cabins	2
Berths	6
Interior	teak
Layout	Entrance: stairs, portside pilot berth and navigation corner, starboard owners' cabin with double bed, bathroom with shower, toilet and washbasin, galley with large refrigerator on port side, saloon with sofas on both sides, guest cabin.
Floor	teak and holly
Open cockpit	yes
Saloon	yes
Headroom saloon (m)	Ca 1,95
Heating	stove diesel
Navigation center	yes
Chart table	yes
Dining room	yes
Galley	yes
Countertop	Duropal
Sink	stainless steel 2 x
Cooker	calor gas Force 10
Oven	Force 10
Gas alarm	yes
Fridge	2 x
Hot water system	220V
Water pressure system	electrical
Manual and/or foot pump	yes
Crockery	yes
Owners cabin	double bed *
Bed length (m)	Ca 2
Wardrobe	drawers
Bathroom	separate
Toilet	shared



Toilet system	manual Jabsco
Wash basin	
Shower	shared
Extra info	Neptune mattress *
Guest cabin 1	v-bed
Bed length (m)	* ca 1,90
Wardrobe	hanging and drawers
Extra info	Neptune mattress

MACHINERY

No of engines	1
Make	Perkins
Type	4.108
HP	50
kW	36,75
Fuel	diesel
Year of overhaul	2017
Maximum speed (kn)	6,5
Cruising speed (kn)	6
Engine cooling system	freshwater heat exchanger
Drive	shaft
Engine controls	bowden cable
Gearbox	mechanical
Exhaust	watercooled
Propeller type	folding Max prop Italy
Propeller blades	3
Propeller shaft material	stainless steel
Manual bilge pump	yes
Electric bilge pump	yes
Bilge alarm	yes
Electrical installation	12 / 110 / 220 volt



Start battery	1 x Gel ca. 2016
Service battery	1 x Gel ca. 2016
Battery monitor	Link 10
Battery charger	10 Amp.
Shorepower	with cable
Watermaker	disconnected

NAVIGATION

Compass	Ritchie
Depth sounder	Autohelm
Log	Autohelm
Windset	Autohelm
VHF	with AIS display, needs services Icom ICM 601
Autopilot	Autohelm 6000
Radar	Raytheon R10 XX Raster scan
GPS	Garmin GPS MAP 210
Plotter	yes
Plotter/GPS	B&G V7 ca 2018
Navigation lights	yes

EQUIPMENT

Sprayhood with grab rail	yes
Cockpit table	yes
Boarding ladder	stainless steel
Anchor	Rocna 25 KG
Anchor chain	80 meter
Windlass	electrical Simpson
Davits	aluminum
Sea railing	wire
Life raft	container
Life raft (pers)	6



Last life raft survey	2006
Radar reflector	yes
Fenders	yes
Mooring lines	yes
Spare parts	yes
Tools	various tools with English sizes
Clock - barometer	Wempe

RIGGING

Brand mast	2 x
Material mast	carbon
Keel stepped mast	yes
Mainsail	hardly used 2016
Mainsail cover	Lazy jacks
Mizzen	hardly used 2016
Mizzen sailcover	Lazy jacks
Booster	of age but still good
Stormjib	yes
Reefing System	quick-one-line-reefing
Boomvang	gasspring 2 x
Primary sheet winch	1x manual, 1 x electric Barient 23
Secondary sheet winch	1 x Barient 27 electric, 1 x harken 46 manual



FREEDOM 44



FREEDOM 44



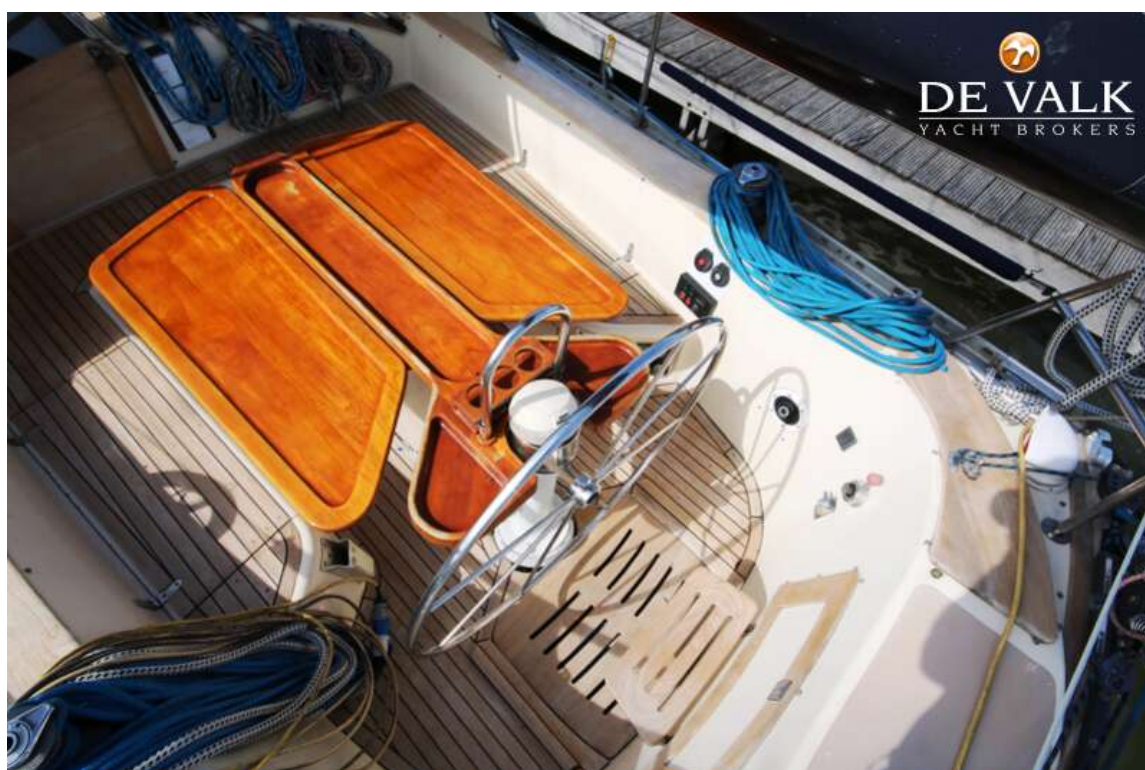
FREEDOM 44



FREEDOM 44



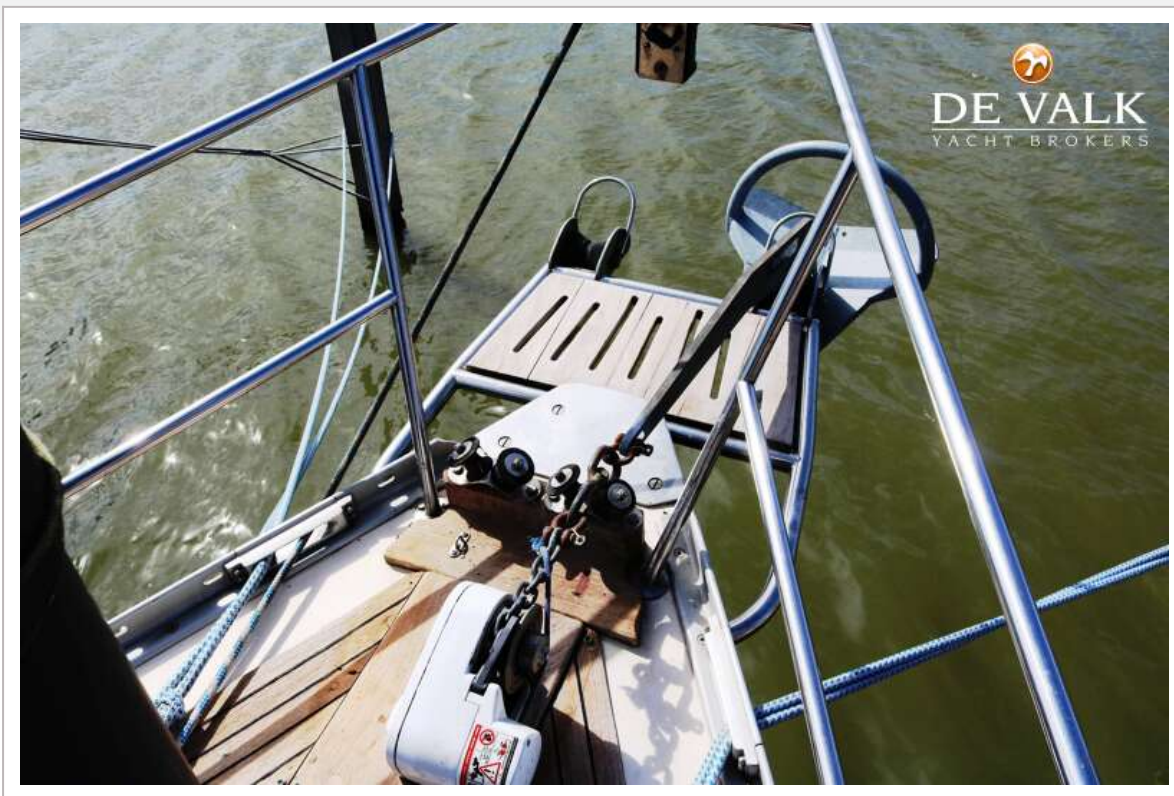
FREEDOM 44



FREEDOM 44



FREEDOM 44



FREEDOM 44



FREEDOM 44



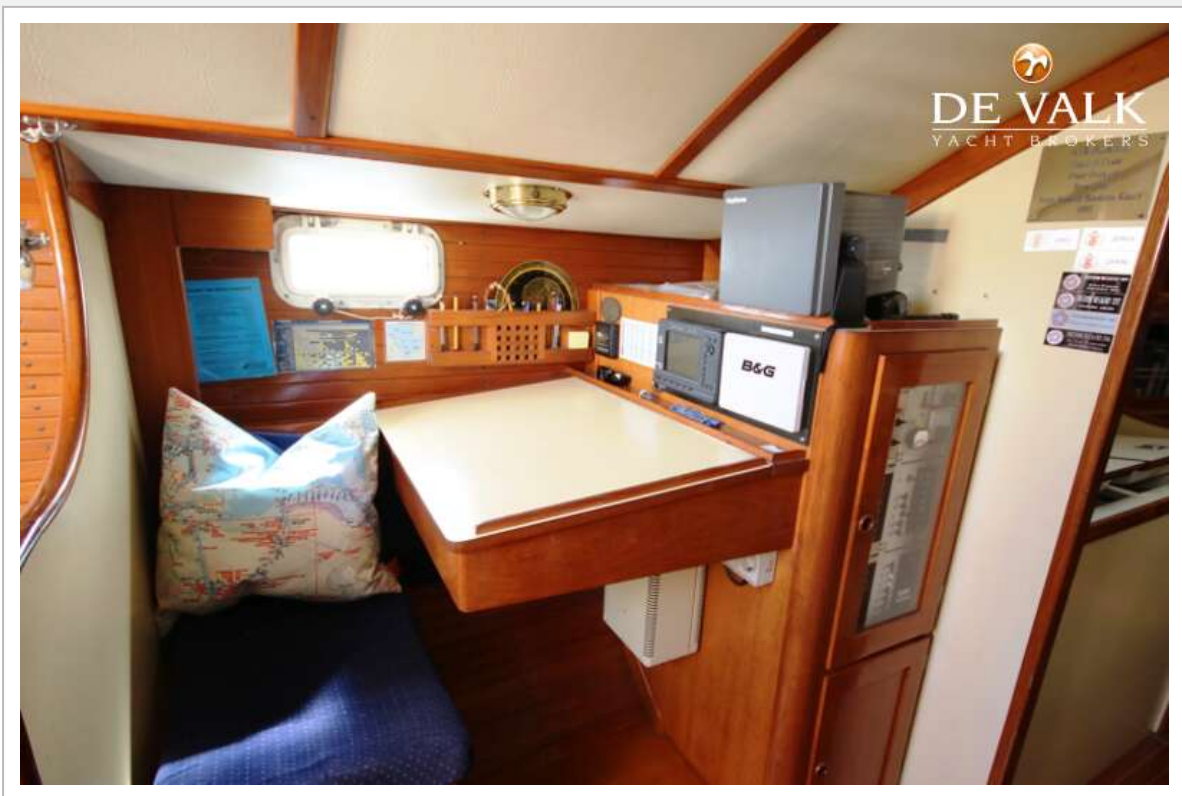
FREEDOM 44



FREEDOM 44



FREEDOM 44



FREEDOM 44



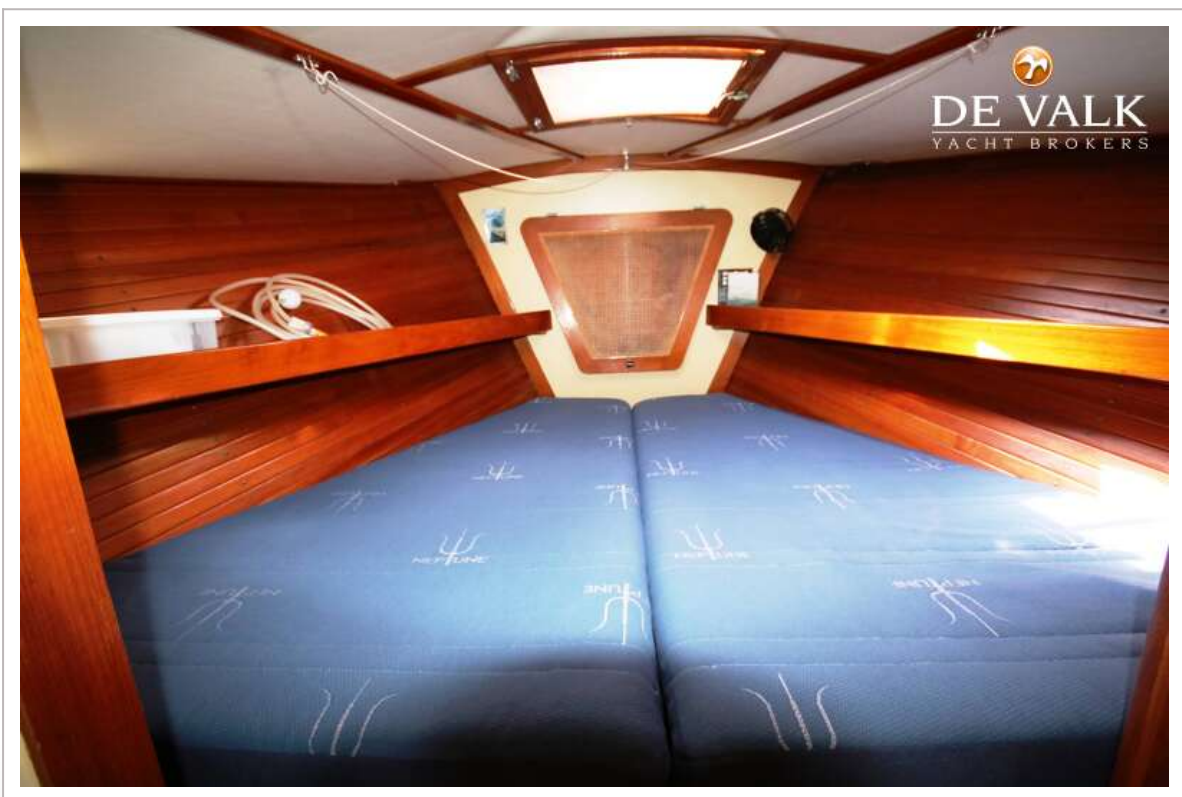
FREEDOM 44



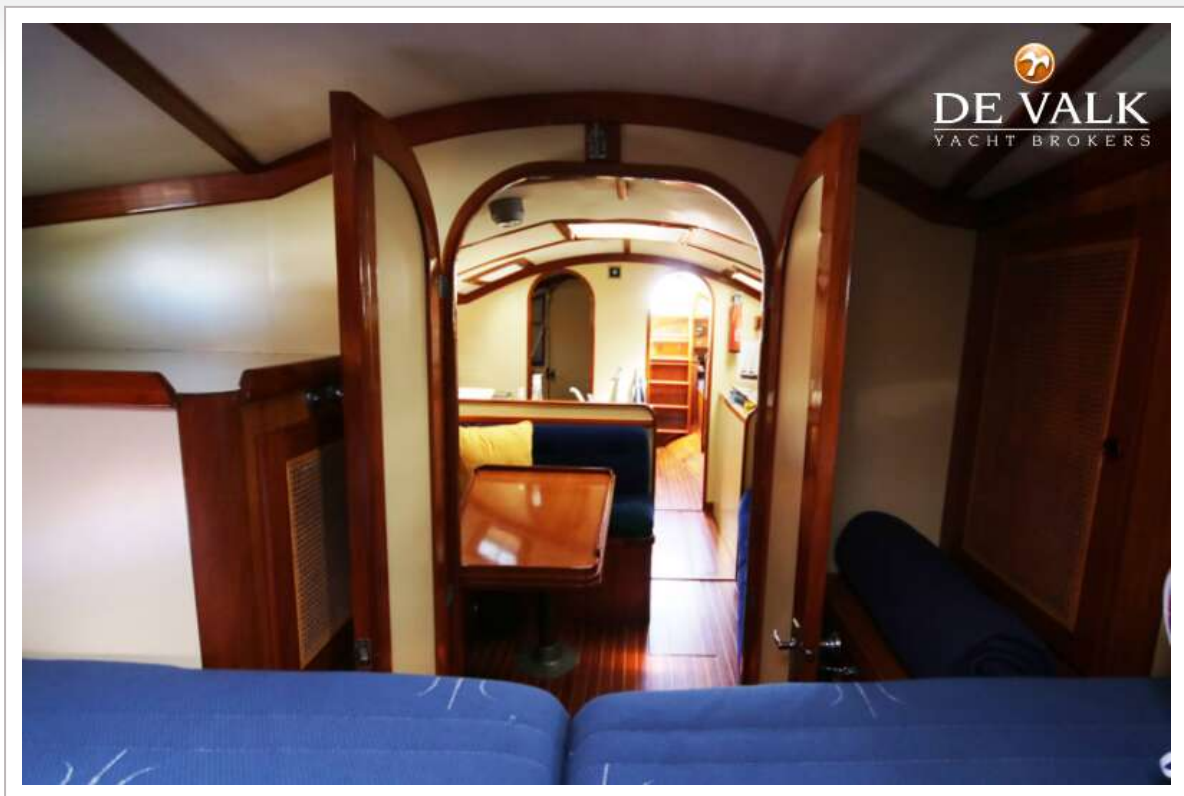
FREEDOM 44



FREEDOM 44



FREEDOM 44



FREEDOM 44

