



STENTOR 1600

STENTOR 1600

BROKER'S COMMENTS

Stentor 1600 "Via Vai" is designed by Vripack and launched at the Stentor shipyard in 2004. A real long range motor yacht (range approx 3750 nm @ 7.5 kn) with all the luxury for a comfortable time on board! Equipped with a 185 hp. Perkins diesel engine, hydraulic bow- & stern thruster, Kohler (11 Kva) generator & Vetus stabilizers. The double glazed windows, Kabola central heating, two cabins with both an ensuite bathroom makes a stay on board very comfortable. This Stentor is complete equipped, well maintained & ready to explore the world! Contact our office in Sneek for her current location.

Arne Doodeman

SPECIFICATIONS

Dimensions	16.00 x 4.65 x 1.30 (m)	Builder	Stentor Yachts SRL
Built	2004	Cabins	2
Material	Steel	Berths	6
Engine(s)	1 x Perkins Sabre M185C diesel	Hp/Kw	185.00 (hp), 135.98 (kw)
Asking price	sold (VAT)	Lying	elsewhere / Not at sales office

CONTACT

Sales office	De Valk Sneek	Telephone	+31 (0)515 42 80 30
Address	Zwolsmanweg 7 8606 KC Sneek NL	E-mail	sneek@devalk.nl

DISCLAIMER

These particulars are given in good faith as supplied but cannot be guaranteed.



STENTOR 1600

GENERAL

Model	STENTOR 1600
Type	motor yacht
LOA (m)	16,00
LWL (m)	14,95
Beam (m)	4,65
Draft (m)	1,30
Air draft (m)	3,25
Year built	2004
Launched	06-2004
Builder	Stentor Yachts SRL
Country	The Netherlands
Designer	Vripack
Displacement (t)	33
CE norm	A
Hull material	steel
Hull colour	off-white Awlgrip paint
Hull shape	multi hard chine
Keel type	long keel
Superstructure material	steel Teak on front cabin
Rubbing strake	stainless steel
Deck material	steel
Deck finish	non-skid paint
Cockpit deck finish	teak
Antifouling (year)	2017
Window frame	aluminium
Window material	double glazing Hora
Deckhatch	3x
Insulation	foam plates
Mast can be lowered	hydraulic
Fuel tank (litre)	steel 5000 l. (2x 2500 l.)



Level indicator (fuel tank)	VDO
Freshwater tank (litre)	stainless steel 2500 l. (2x 1250 l.)
Level indicator (freshwater)	VDO
Blackwater tank (litre)	stainless steel 325 l.
Greywater tank (litre)	stainless steel 430 l.
Wheel steering	hydraulic
Inside helm position	yes
Outside helm position	yes

ACCOMMODATION

Cabins	2
Berths	6
Interior	teak
Floor	teak and holly
Aft deck	yes
Saloon	yes
Heating	central heating Kabola B12 tap
Air-conditioning	Throughout the whole yacht
Dinette	yes
Dinette to convert into berth	yes
Opening door to aft deck	yes
Galley	yes
Countertop	corian
Sink	Double sink
Cooker	ceramic 4-burner Siemens
Extractor	Etna
Microwave/oven combi	Siemens Microwelle plus
Fridge	Siemens
Freezer	Siemens
Hot water system	on central heating
Water pressure system	electrical



STENTOR 1600

Dishwasher	Siemens
Owners cabin	French bed
Wardrobe	hanging/drawers/shelves
Bathroom	en suite
Toilet	en suite
Toilet system	electric
Wash basin	in the bathroom
Shower	en suite
Guest cabin 1	French bed
Wardrobe	hanging and drawers
Bathroom	en suite
Toilet	en suite
Toilet system	electric
Wash basin	in the bathroom
Shower	en suite
Washing machine/dryer combi	Miele Softtronic WT946S
Wet bar	sink and fridge on aftdeck

MACHINERY

No of engines	1
Make	Perkins Sabre
Type	M185C
HP	185,00
kW	135,98
Fuel	diesel
Maximum speed (kn)	9,5
Cruising speed (kn)	8
Consumption (l/hr)	10 l/hr @ 7,5 kn
Range (nm)	3750 @ 7,5 kn
Engine hours	3300
Engine cooling system	freshwater heat exchanger



STENTOR 1600

Drive	shaft
Engine controls	electrical ZF
Gearbox	hydraulic PRM Newage coventry with trolling valve
Bowthruster	hydraulic With remote control & proportional
Sternthruster	hydraulic With remote control & proportional
Exhaust	watercooled
Thrust bearing	yes
Propeller type	fixed
Propeller blades	5-bladed
Propeller shaft material	stainless steel
Shaft lubrication	water
Electric bilge pump	yes
Generator	silent separator Kohler 11 kVa, 1500 rpm
Running hours generator	674 hours (01-03-2018)
Start battery	2x 180 Ah Mastervolt Gel (2015)
Service battery	6x 200 Ah Mastervolt Gel (2015)
Generator battery	1x 80 Ah (2015)
Battery monitor	Matervolt BTM-1 battery monitor, Mastervolt charger control
Battery charger	Mastervolt Mass 24/100
Inverter	2x Mastervolt Mass Sine 24/2500
Shorepower	with cable
Insulation transformer	Mastervolt 4,5 kW with soft start
Stabilizers	fin Vetus Roll damping system
Extra info	double separ filter

NAVIGATION

Compass	Garmin LB100 liquid compass
Depth sounder	Raymarine ST60
Depth sounder/log	Raymarine Multi on the aft deck
Log	Raymarine ST 60
Windset	Raymarine ST60 on the aft deck



VHF	Radio Ocean RO 4800
VHF handheld	Radio Ocean P4800
Autopilot	Raymarine ST6001
Rudder angle indicator	in the autopilot and Raymarine ST60 on the aft deck
Radar	Raymarine
Plotter/GPS	Simrad NSS8 on the aft deck
Radar/GPS/plotter	2x Raymarine RL80C Pathfinder
Weather receiver	Radiotelex Weatherman
Navtex	ICS Nav 4
AIS receiver	Class B
AIS transponder	Class B
Navigation lights	yes
Searchlight	yes

EQUIPMENT

Cockpit cover	2x (red- and black colored)
Cockpit cushions	yes
Cockpit table	yes
Bathing platform	Finished wiht teak
Boarding ladder	stainless steel
Gangway	Stainless steel and teak
Deck shower	warm/cold
Anchor	Stainless steel
Anchor chain	100 m. stainless steel
Anchor 2	Stainless steel with rope
Windlass	hydraulic Vetus
Capstan	yes
Windlass aft	electrical
Deck wash	yes
Davits	stainless steel
Deck crane	hydraulic



STENTOR 1600

Sea railing	stainless steel
Grab rail (superstructure)	stainless steel
Railing side opening gates	3x
Life raft	valise (or bag) Needs service
Lifebuoy	yes
Danbuoy	yes
Wiper	6x
Horn	yes
Radar reflector	Serpe-lesm active radar reflector
Fenders	yes
Mooring lines	yes
TV	Samsung
TV receiver	M7 sat. receiver
TracVision ball	Intellian
Radio-cd player	Pioneer
DVD player	Sony
Fire extinguisher	yes
Extinguisher in engine room	yes
Extra info	central vacuum clean system



STENTOR 1600



STENTOR 1600



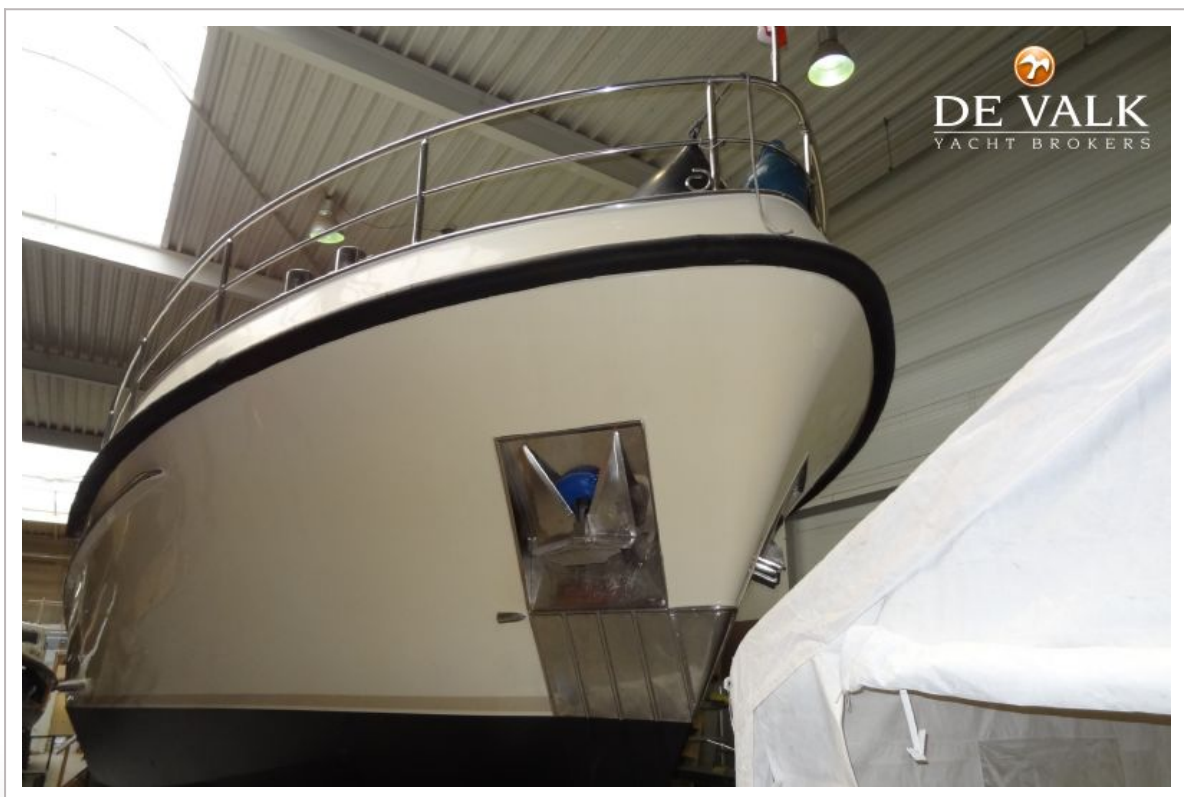
STENTOR 1600



STENTOR 1600



STENTOR 1600



STENTOR 1600



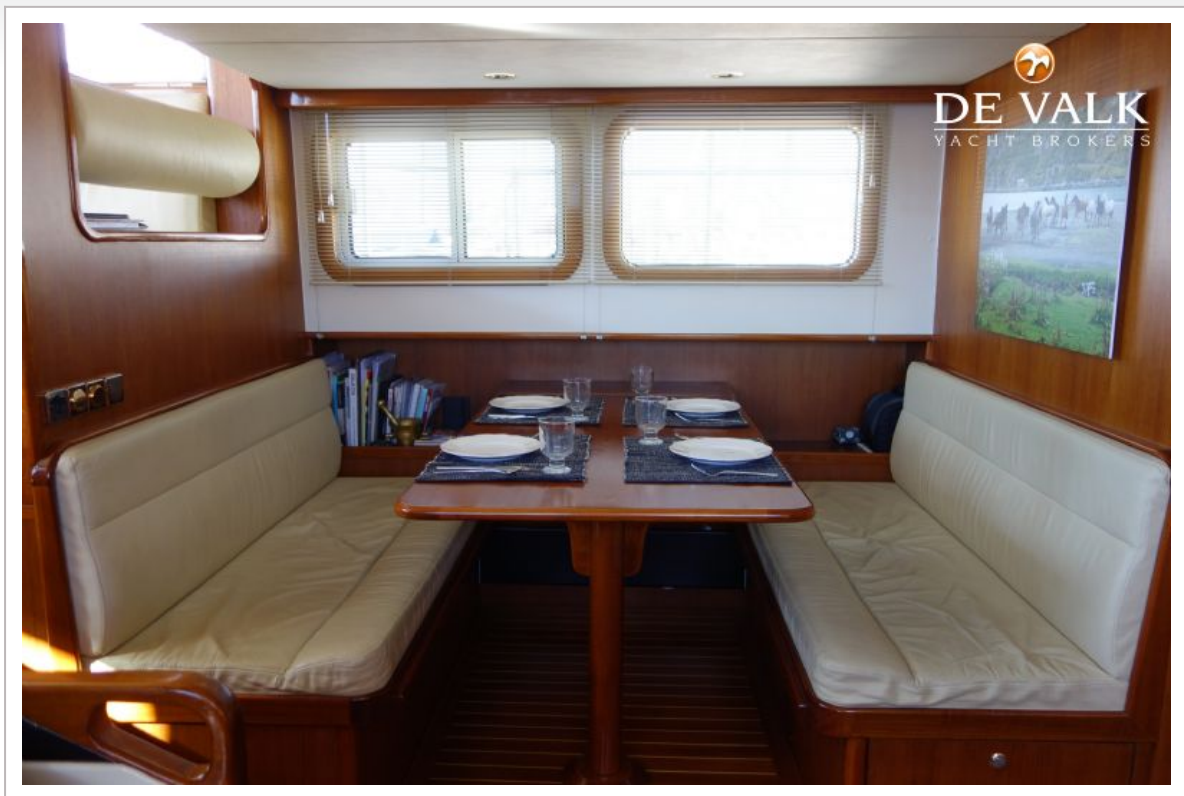
STENTOR 1600



STENTOR 1600



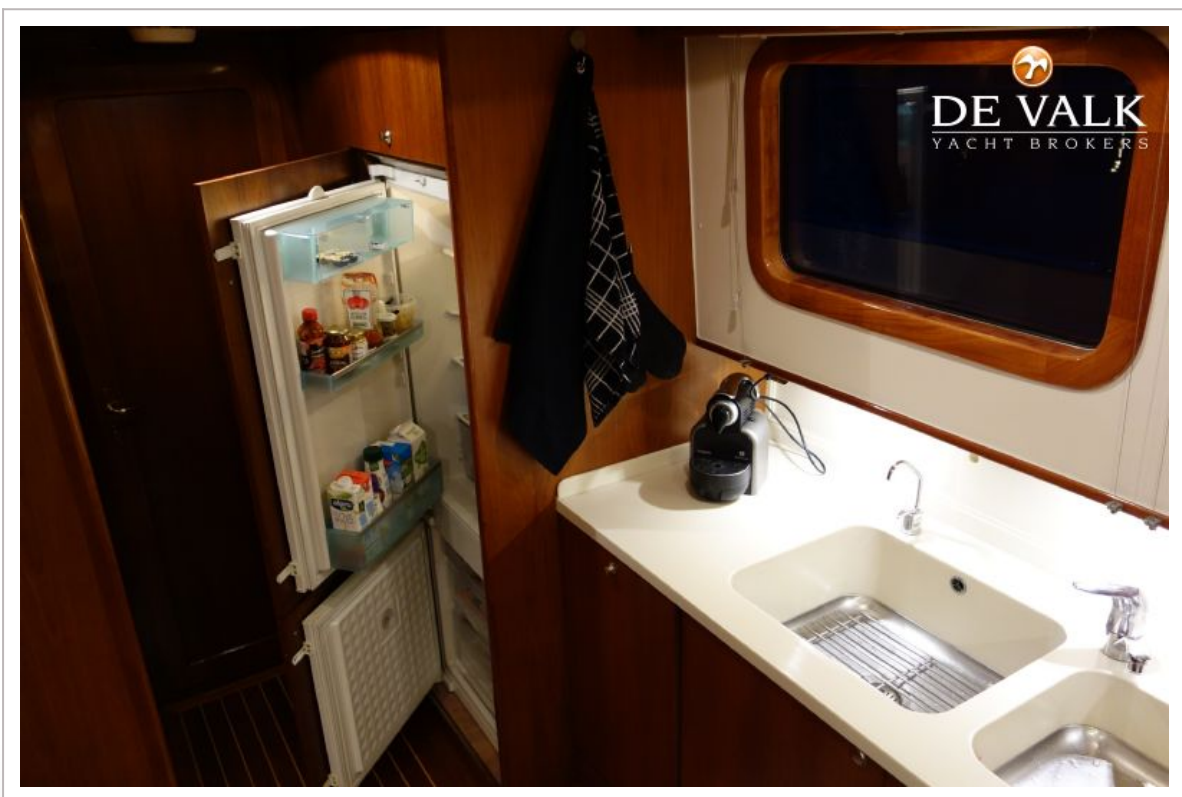
STENTOR 1600



STENTOR 1600



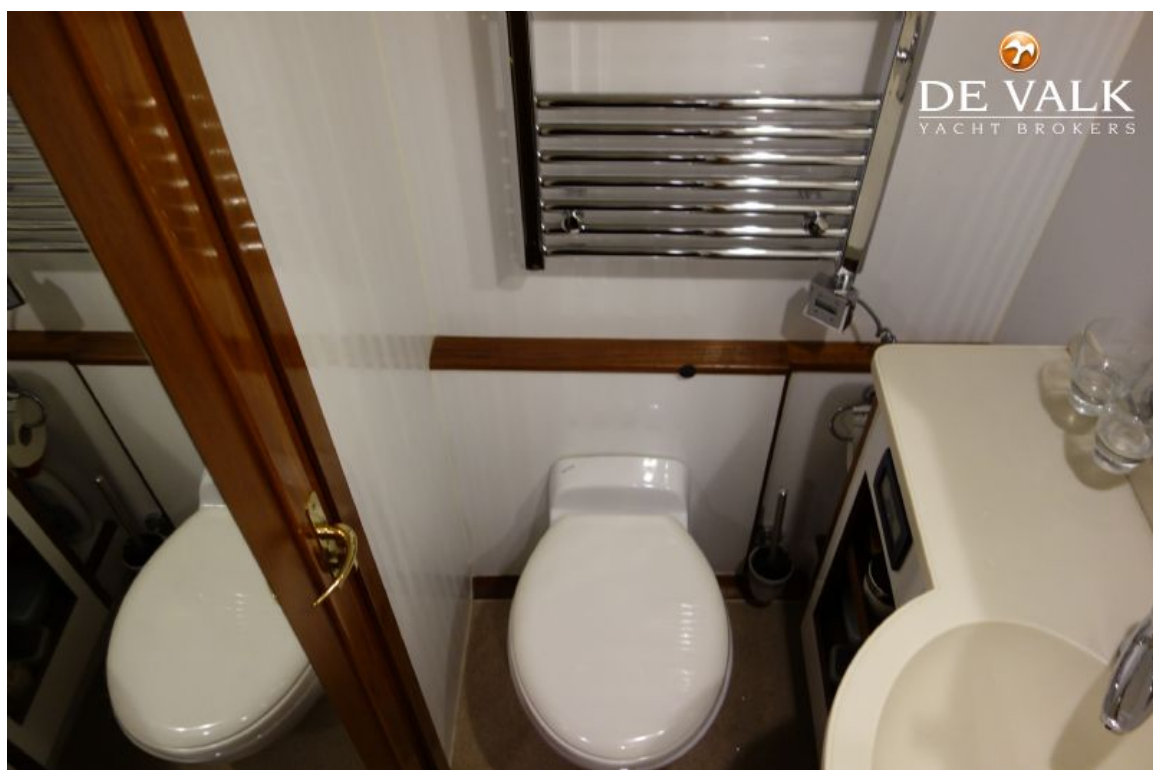
STENTOR 1600



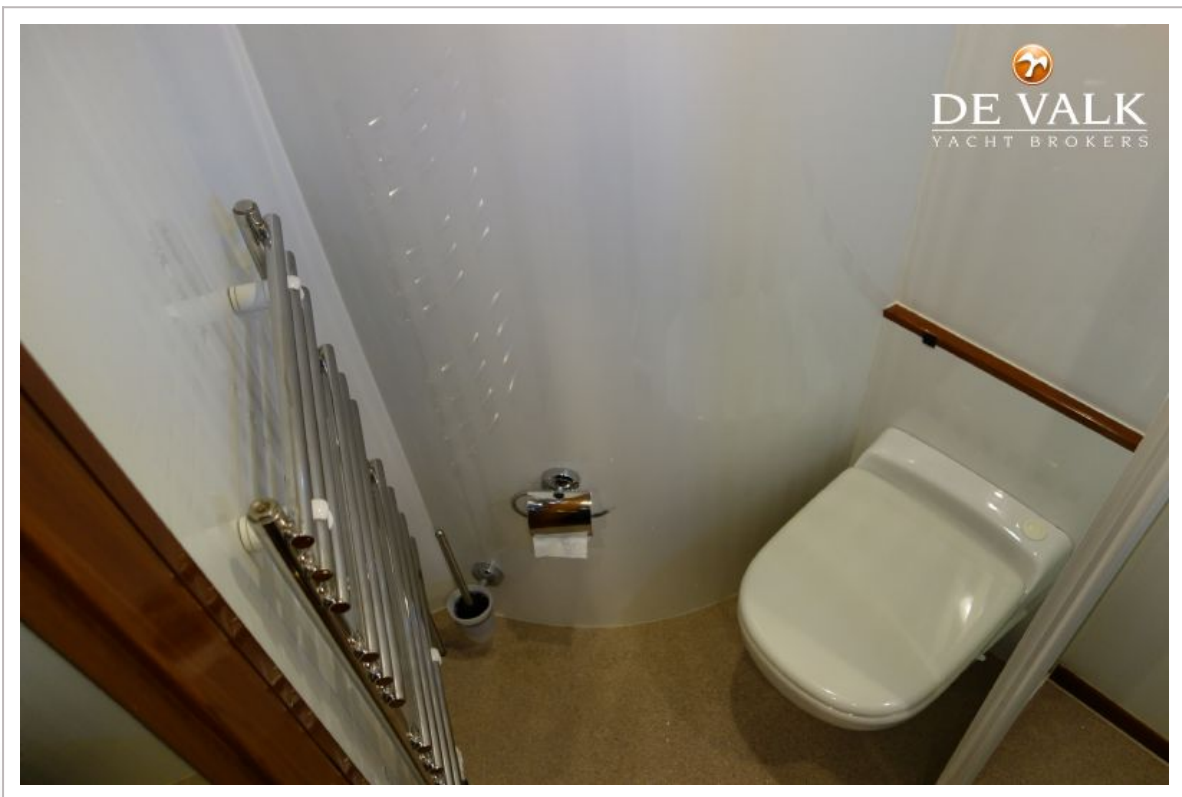
STENTOR 1600



STENTOR 1600



STENTOR 1600



STENTOR 1600



STENTOR 1600



STENTOR 1600



STENTOR 1600

