



DE VALK
YACHT BROKERS



BAVARIA 55 CRUISER



DE VALK
YACHT BROKERS

BAVARIA 55 CRUISER

BROKER'S COMMENTS

This Bavaria Cruiser 55 is selling by her first owner and ready to cruise with family or to race with friends. Clove Hitch is professionally maintained and fully equipped for Cat1 offshore racing to 2017 ISAF standards. Her spacious cockpit accommodates up to 10 people. The high freeboard ensures great vision for a seated helmsperson and the crew without blind spots. The salon impresses with a freestanding galley island, inviting settee and plenty of storage spaces. She is also outfitted with a generator, Air Conditioning system and an impressive list of navigational aids and safety equipment.

Harald Padberg

SPECIFICATIONS

Dimensions	16.75 x 4.76 x 2.35 (m)	Builder	Bavaria Yachtbau GmbH, Giebelstad
Built	2009	Cabins	4
Material	GRP	Berths	8
Engine(s)	1 x Volvo Penta D3-110 diesel	Hp/Kw	110.00 (hp), 80.85 (kw)
Asking price	sold (VAT)	Lying	contact Monnickendam

CONTACT

Sales office	De Valk Monnickendam B.V.	Telephone	+31 (0)299 65 63 50
Address	Hoogedijk 6 1145 PM Katwoude NL	E-mail	monnickendam@devalk.nl

DISCLAIMER

These particulars are given in good faith as supplied but cannot be guaranteed.



BAVARIA 55 CRUISER

GENERAL

Model	BAVARIA 55 CRUISER
Type	sailing yacht
LOA (m)	16,75
LWL (m)	14,96
Beam (m)	4,76
Draft (m)	2,35
Air draft (m)	23,25
Headroom (m)	2,06
Year built	2009
Launched	2010
Builder	Bavaria Yachtbau GmbH, Giebelstad
Country	Germany
Designer	Farr Yachts Design
Displacement (t)	20
Ballast (tonnes)	cast iron and lead 5
CE norm	A
Hull material	GRP
Hull colour	white
Hull shape	full bilged
Keel type	bulb keel
Superstructure material	GRP
Deck material	GRP
Deck finish	teak
Superstructure deck finish	non-skid moulded in
Cockpit deck finish	teak
Antifouling (year)	Sept. 2018
Window frame	aluminium
Window material	tempered glass
Deckhatch	13 x
Portholes	aluminium



BAVARIA 55 CRUISER

Insulation	foam
Fuel tank (litre)	polyethylene 380 L
Level indicator (fuel tank)	yes
Freshwater tank (litre)	700 L
Level indicator (freshwater)	yes
Blackwater tank (litre)	polyethylene 140 L
Level indicator (blackwater)	yes
Blackwater tank extraction	deck extraction
Wheel steering	cable steering
Emergency tiller	yes
More info on paintwork	Bottom paintwork scraped in May 2016 and coated with 4 layers VC Off-Shore coating. New anti fouling applied Sept. 2018
Extra info	Colve Hitch is berthed in Hong Kong. Please contact our sale office to make an appointment.
Extra info	Hong Kong VAT regulations : no VAT has to be paid. If a yacht is to remain longer than 6 months, a Hong Kong Pleasure Vessel Operator licence must be applied.

ACCOMMODATION

Cabins	4
Berths	8
Interior	mahogany
Air-conditioning	single cycle airco
Chart table	yes
Galley	yes
Countertop	
Sink	stainless steel 2 x
Cooker	calor gas 3 burner
Oven	yes
Microwave	yes
Fridge	185 L
Freezer	35 L in Fridge



BAVARIA 55 CRUISER

Hot water system	220V + engine
Water pressure system	electrical
Owners cabin	double bed
Wardrobe	hanging/drawers/shelves
Bathroom	en suite
Toilet	en suite
Toilet system	electric
Wash basin	at the toilet
Shower	en suite
Guest cabin 1	double bed
Wardrobe	hanging and drawers
Bathroom	shared
Toilet	shared
Toilet system	electric
Wash basin	at the toilet
Shower	shared
Guest cabin 2	double bed
Wardrobe	hanging and drawers
Toilet	shared
Toilet system	electric
Wash basin	at the toilet
Shower	shared
Guest cabin 3	bunk bed
Wardrobe	hanging
Extra info	sail storage in foreship 1 x 1,5 x 1,5m

MACHINERY

No of engines	1
Make	Volvo Penta
Type	D3-110
HP	110,00



BAVARIA 55 CRUISER

kW	80,85
Fuel	diesel
Year installed	2009
Maximum speed (kn)	9
Cruising speed (kn)	8
Consumption (l/hr)	8
Engine hours	1258
Engine cooling system	freshwater heat exchanger
Drive	shaft
Engine controls	bowden cable
Gearbox	hydraulic
Bowthruster	Side Power 8 HP electric
Propeller type	folding
Propeller blades	4
Propeller shaft material	stainless steel
Shaft lubrication	grease
Manual bilge pump	yes
Electric bilge pump	yes
Bilge alarm	yes
Electrical installation	yes
Generator	dry exhaust Fisher Panda 6kW
Running hours generator	1117
Start battery	100A - 2016
Service battery	300A - Dec. 2017
Bowthruster battery	2016
Battery monitor	yes
Battery charger	yes
Inverter	Victron Phoenix 230V Inverter 12/750 (700W)
Shorepower	with cable

NAVIGATION



BAVARIA 55 CRUISER

Compass	yes
Electric compass	yes
Depth sounder	yes
Log	yes
Windset	yes
Repeater	yes
VHF	IC-M422 & IC-M802
Autopilot	with remote control
Rudder angle indicator	yes
Radar	Raymarine RD418D
Radar/GPS/plotter	Raymarine E70 & E80
Navtex	Furuno NX300
AIS receiver	Easy TRX Class B
AIS transponder	Easy TRX Class B
Radio receiver	yes
EPIRB	GME Accusat MT403G

EQUIPMENT

Sprayhood	yes
Cockpit cover	yes
Bimini	yes
Cockpit cushions	yes
Cockpit table	yes
Bathing platform	hydraulic
Boarding ladder	stainless steel
Transom door	yes
Gangway	yes
Deck shower	yes
Anchor	Delta
Anchor chain	50m stainless steel
Anchor 2	Danforth



BAVARIA 55 CRUISER

Deck wash	yes
Sea railing	wire
Pushpit	yes
Pulpit	yes
Life raft (pers)	container 6 and 8 pers.
Last life raft survey	2016
Lifejackets	12
Safety harness	13
Lifebuoy	yes
Danbuoy	yes
Safety lines on deck	yes
Radar reflector	yes
Fenders	yes
Mooring lines	yes
Spare parts	yes
Tools	yes
TV	Samsung
DVD player	yes
Surround Sound System	yes
Sub-woofer	yes
Cockpit speakers	yes
Speakers in salon	yes
Fire extinguisher	yes

RIGGING

Rigging	sloop
Standing rigging	wire
Brand mast	Seldén
Material mast	aluminium
Spreaders	2 X
Mainsail	UK Sails - CXI 15 - Radial - new in Sept. 2018



BAVARIA 55 CRUISER

Mainsail cover	yes
Battcars	yes
Fully battened mainsail	yes
Genoa	UK Sails 2016
Genoa furler	Furlex
Code Zero	Elvstrom Sails 2010 with furler
Spinnaker	Doyle Sails 2011 with retrieval sock
Trysail	Doyle Sails 2011
Stormjib	Doyle Sails 2011
Backstay adjuster	mechanical
Boomvang	gasspring
Primary sheet winch	Lewmar
Secondary sheet winch	Lewmar
Genoa sheetwinches	Lewmar
Halyard winches	Lewmar
Spinnaker winch	Lewmar
Multifunctional winches	halyard/sheet winches 1 power winch



BAVARIA 55 CRUISER



BAVARIA 55 CRUISER



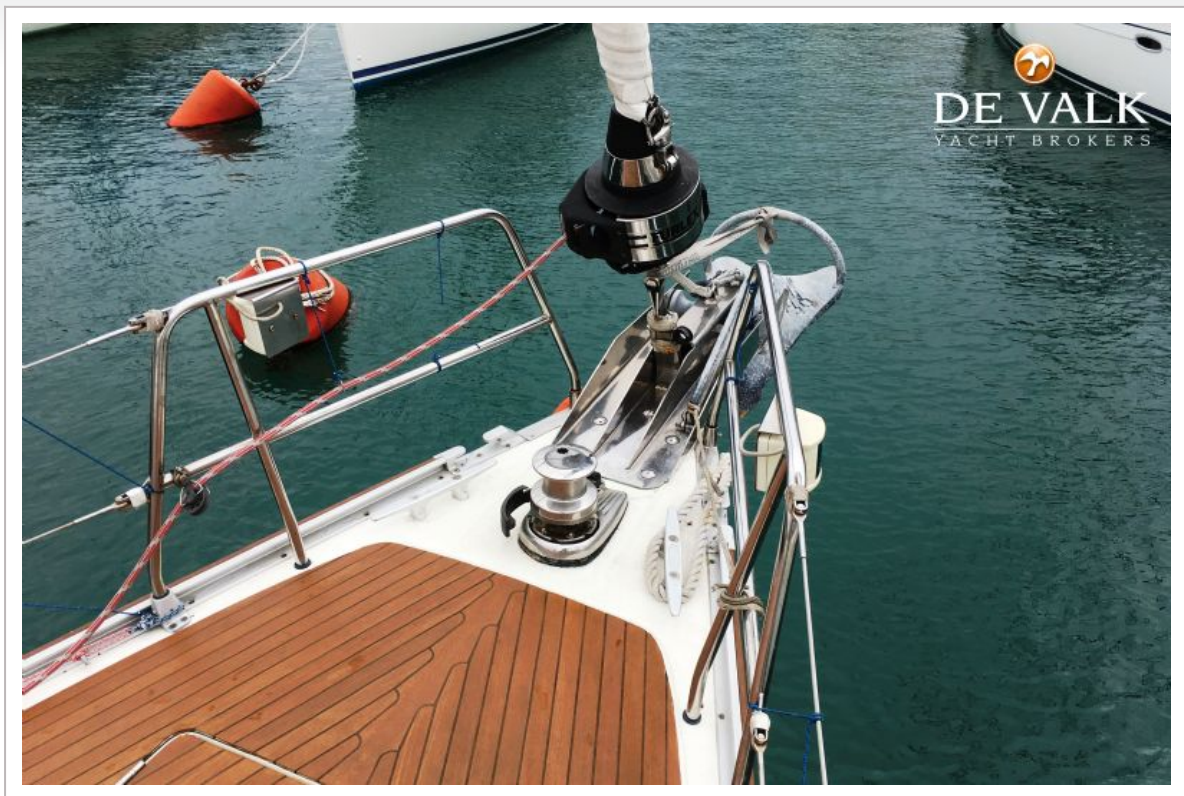
BAVARIA 55 CRUISER



BAVARIA 55 CRUISER



BAVARIA 55 CRUISER



BAVARIA 55 CRUISER



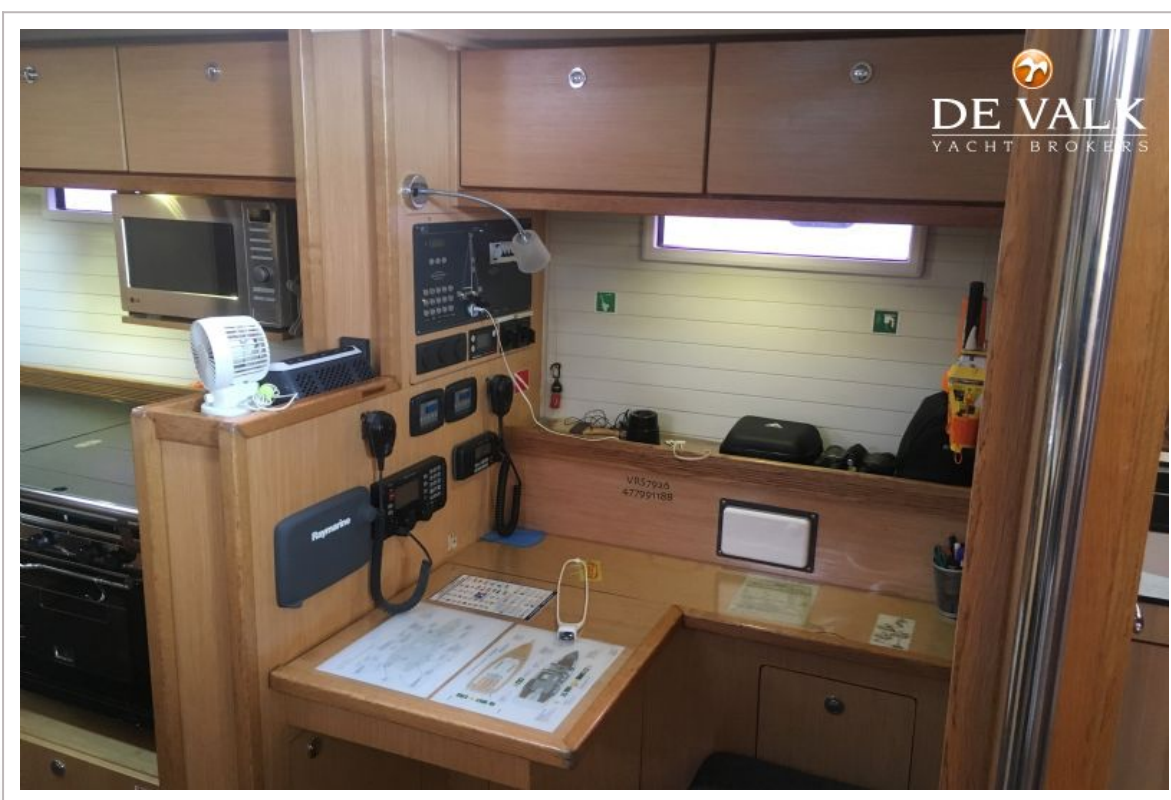
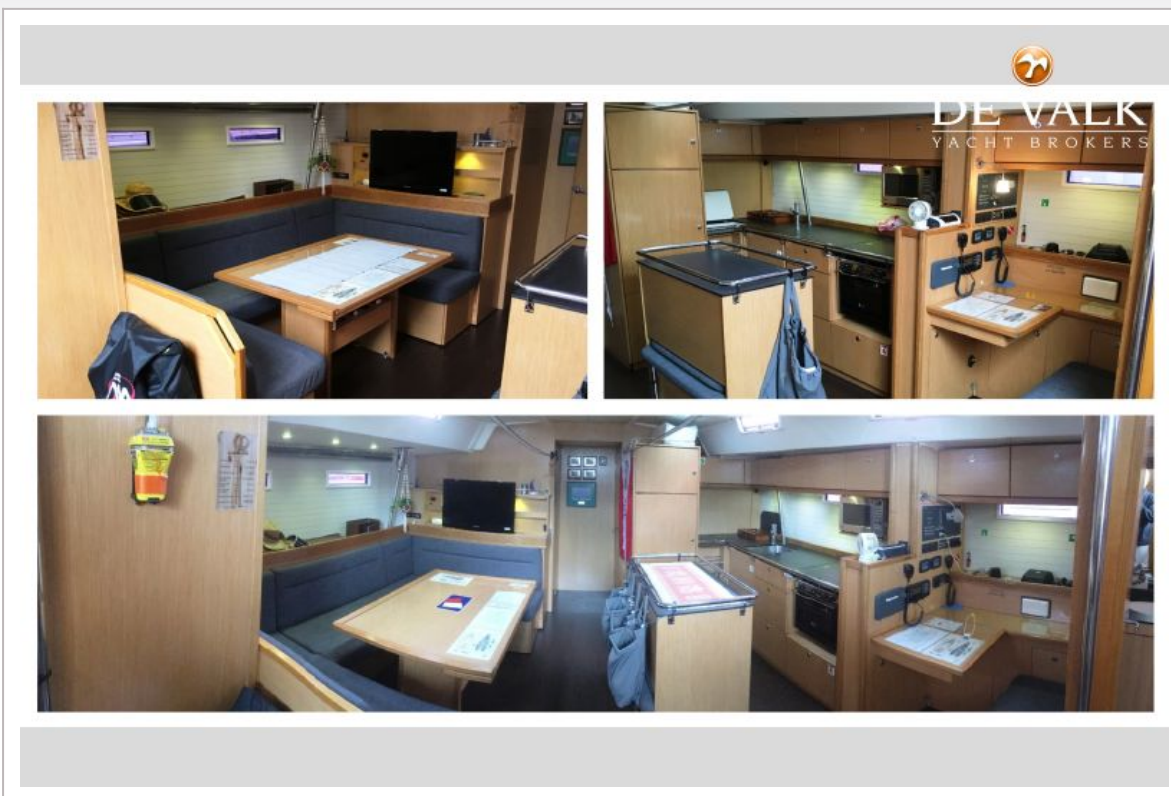
BAVARIA 55 CRUISER



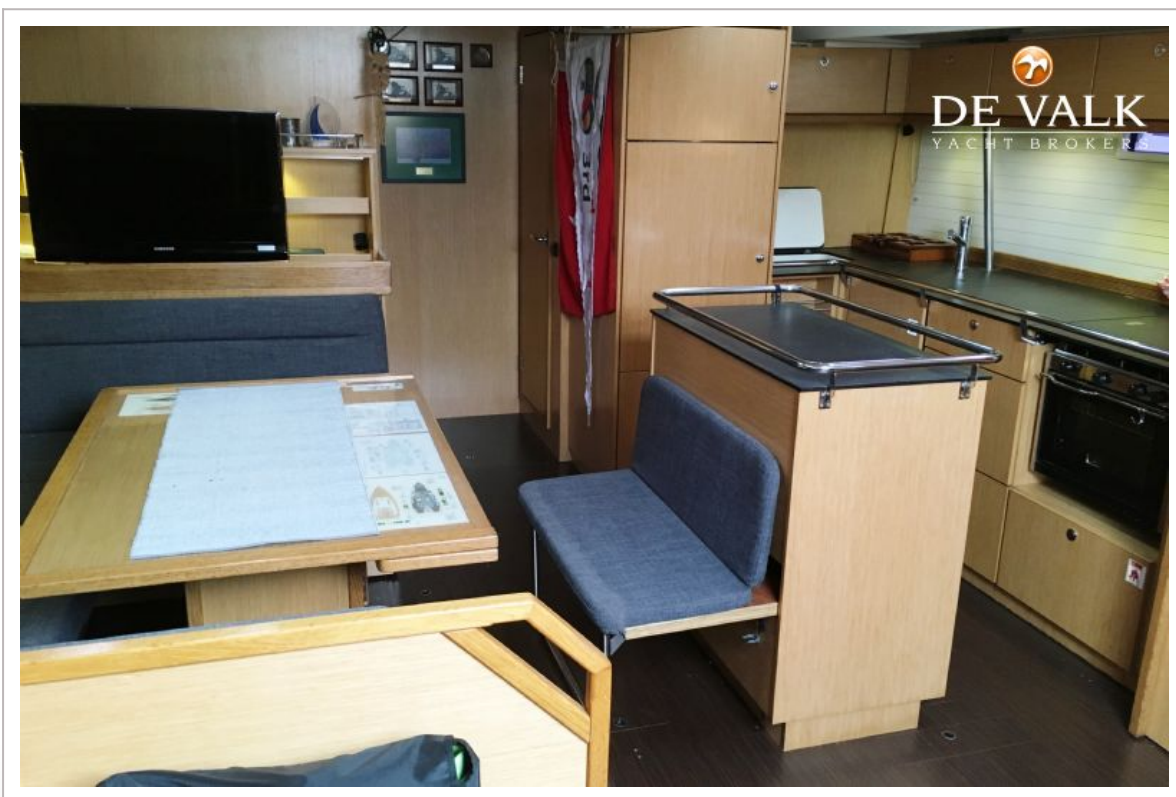
BAVARIA 55 CRUISER



BAVARIA 55 CRUISER



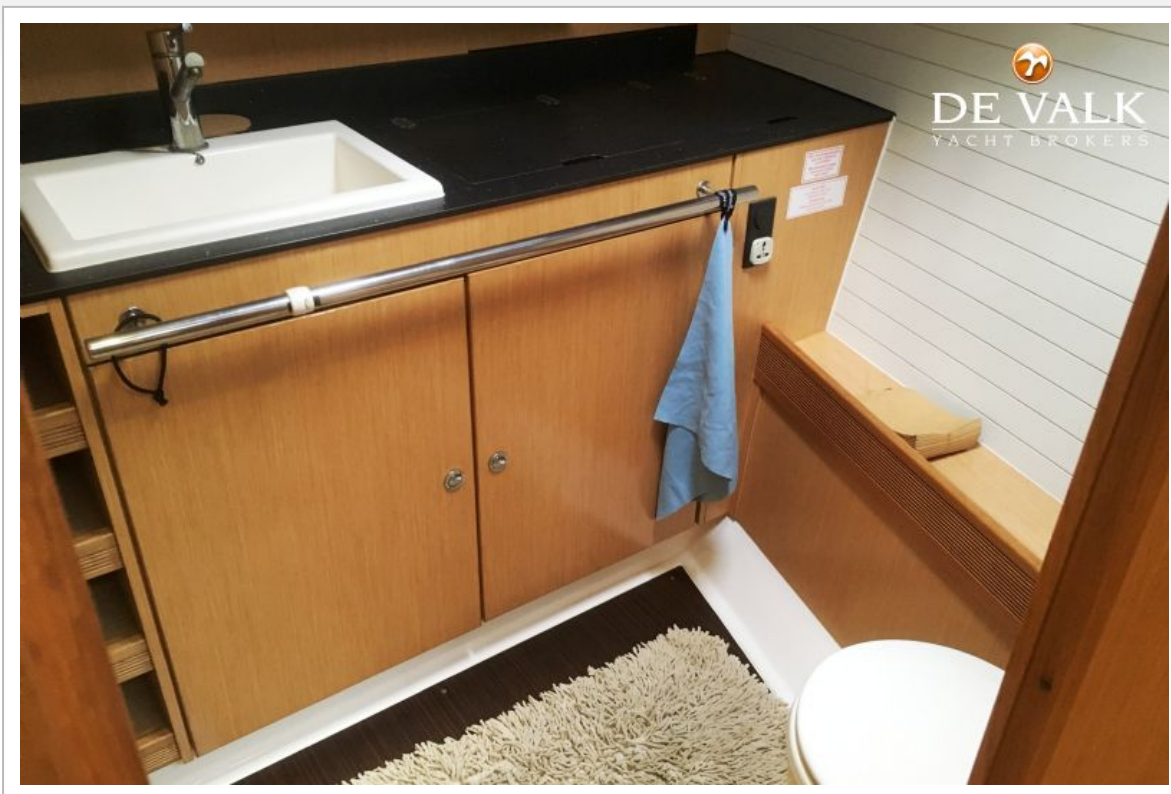
BAVARIA 55 CRUISER



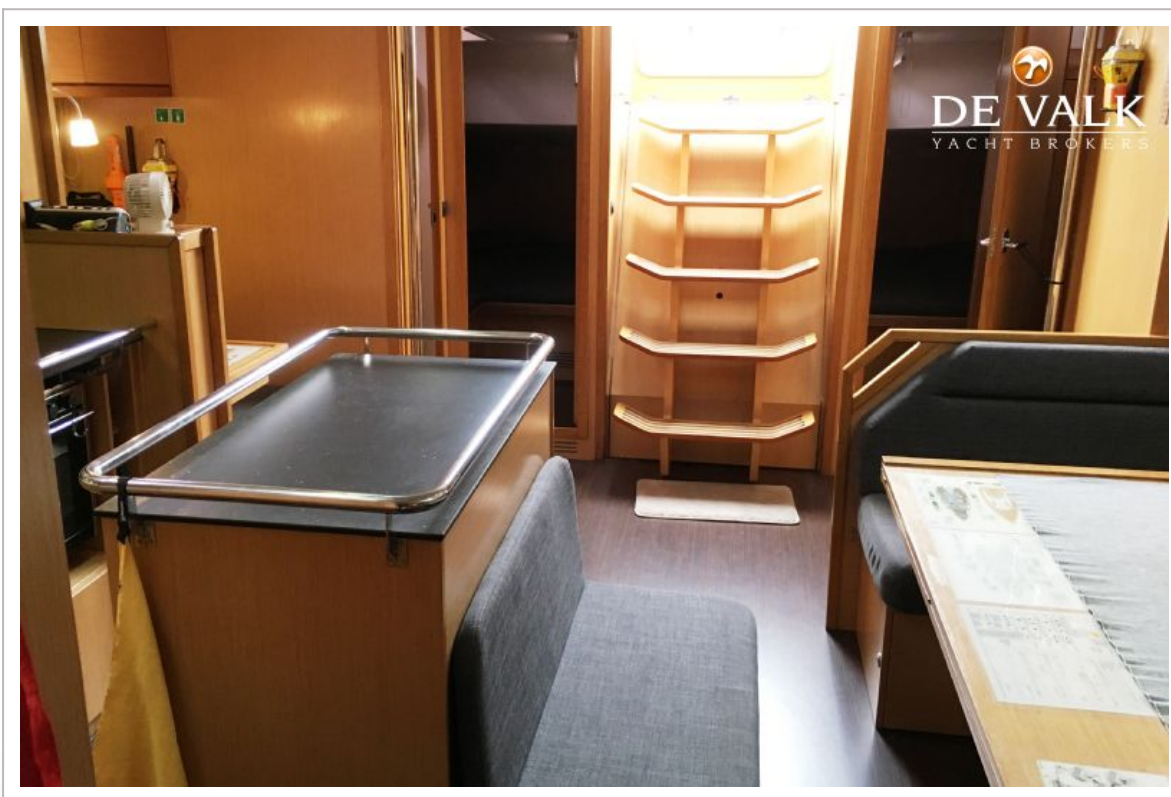
BAVARIA 55 CRUISER



BAVARIA 55 CRUISER



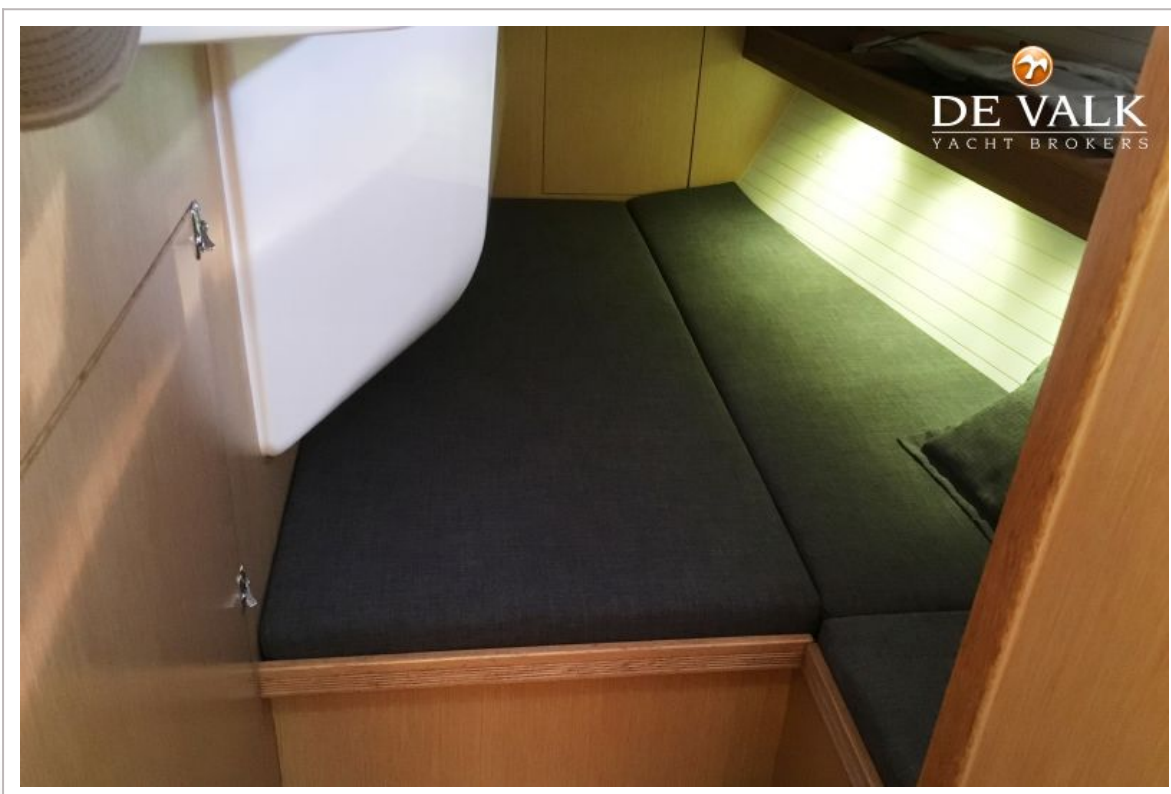
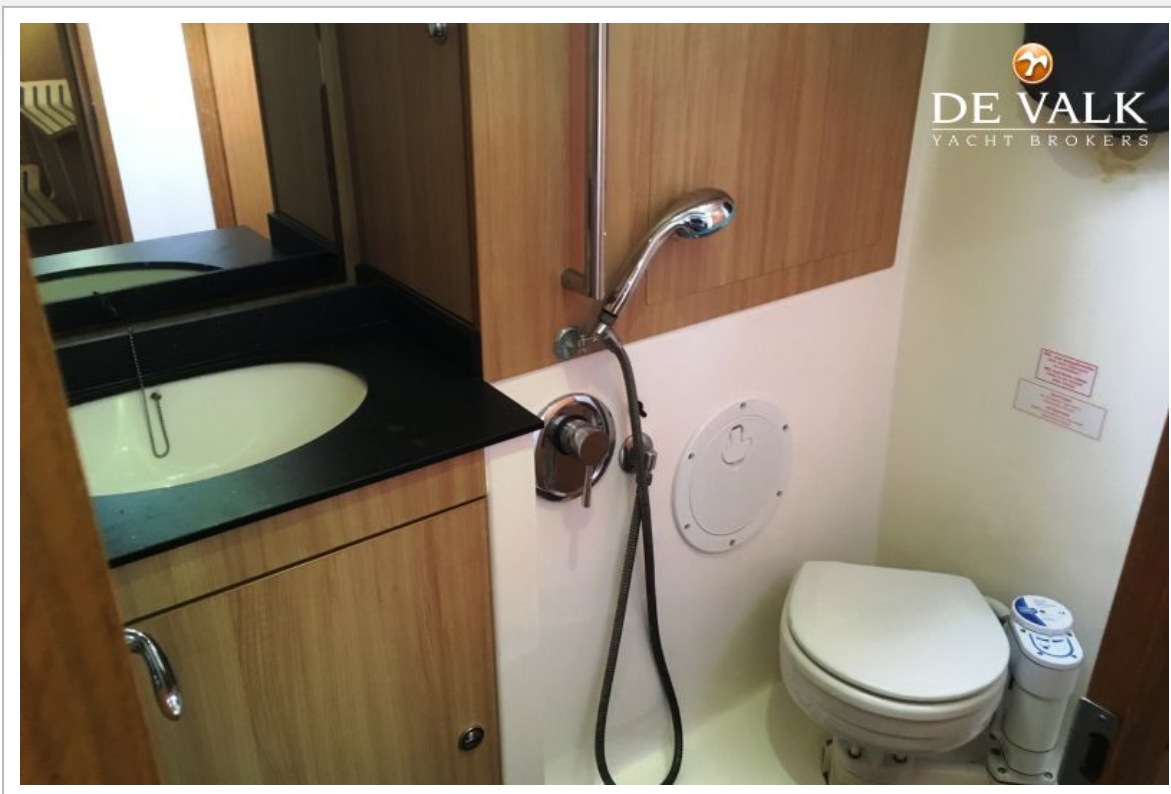
BAVARIA 55 CRUISER



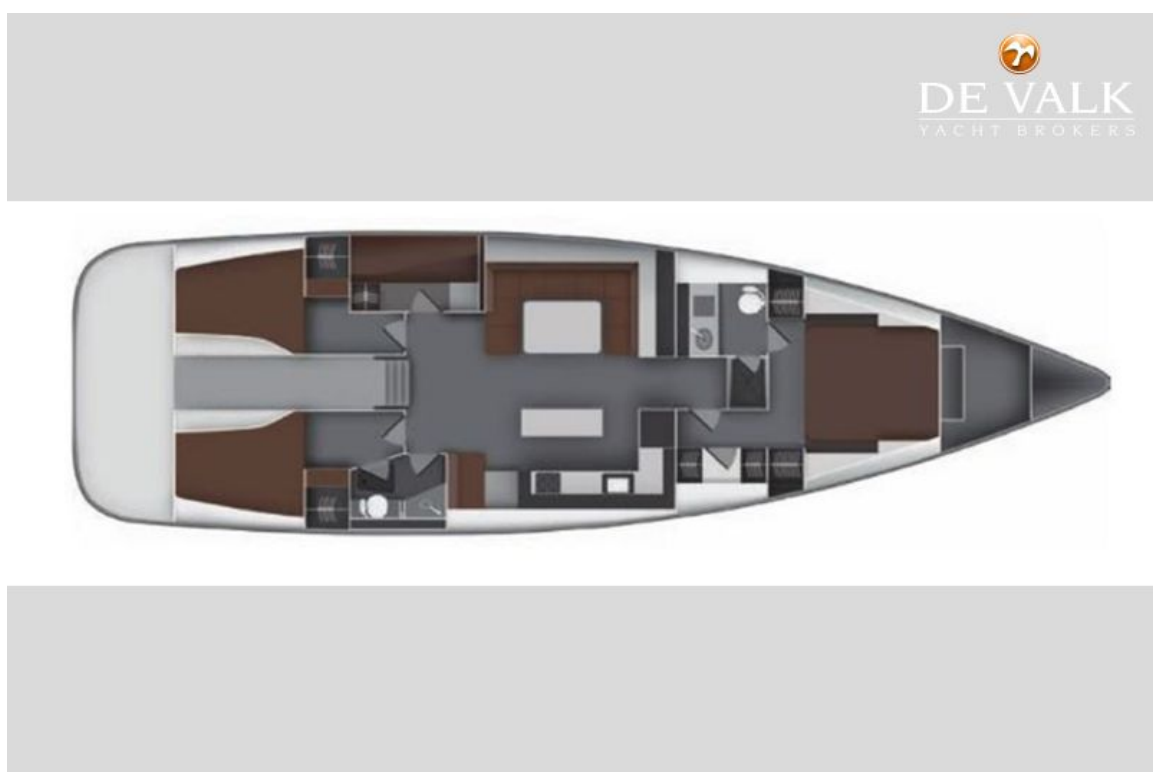
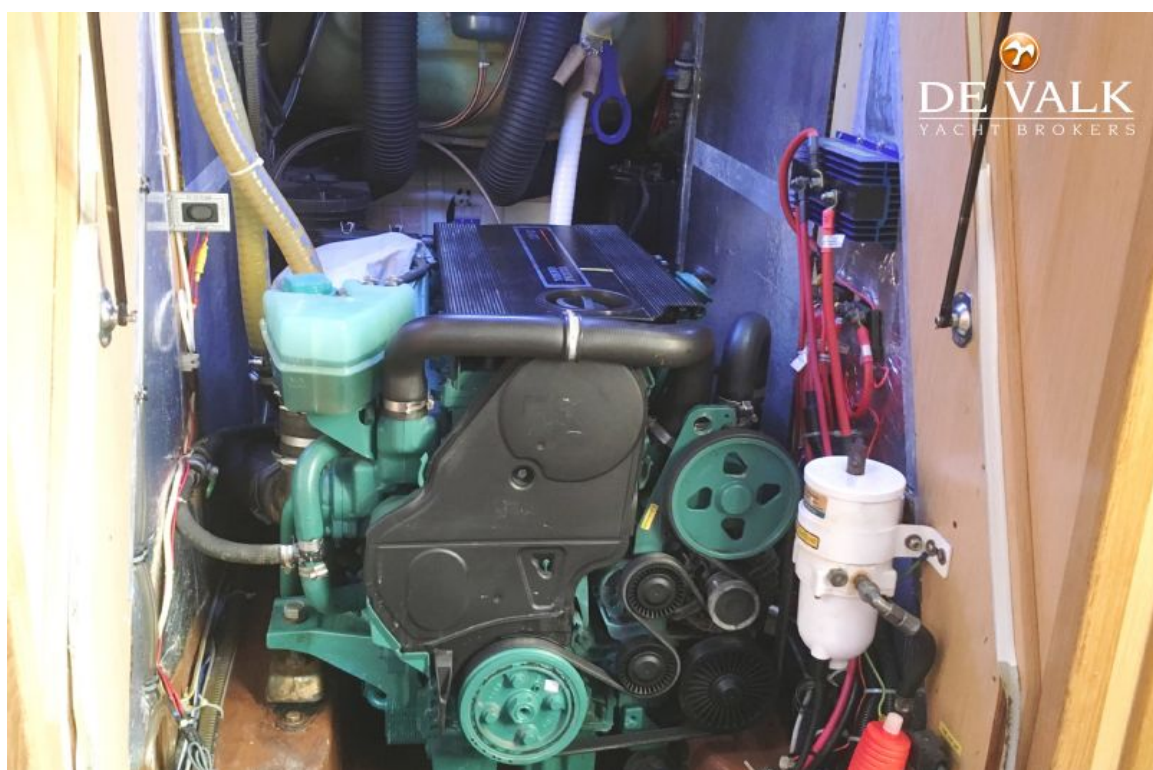
BAVARIA 55 CRUISER



BAVARIA 55 CRUISER



BAVARIA 55 CRUISER



BAVARIA 55 CRUISER

TECHNISCHE DATEN/TECHNICAL DATA



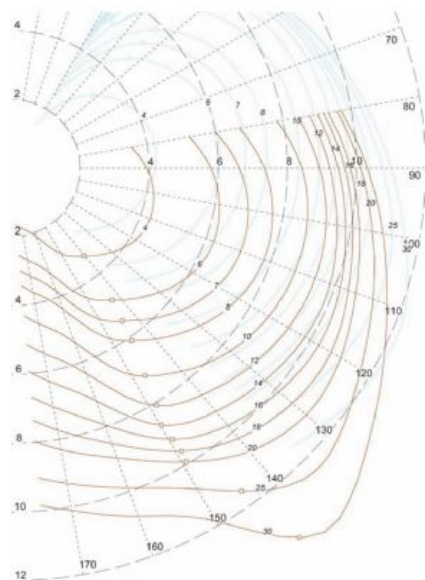
Deck layout./Deck plan.

Gesamtlänge	16,75 m	Length overall
Länge Rumpf	16,16 m	Length hull
Länge Wasserlinie	14,96 m	Length waterline
Gesamtbreite	4,87 m	Beam overall
Tiefgang Standard (ca.)	2,35 m	Draught standard (cast iron keel) (approx.)
Tiefgang Option (ca.)	1,90 m	Draught option (approx.)
Leergewicht (ca.)	17.200 kg	Unladen weight (approx.)
Ballast (ca.)	5.500 kg	Ballast (approx.)
Motor, Volvo-Penta Saildrive	03-110	Engine, Volvo-Penta Saildrive
KW/PS	81/110	KW/hp
Treibstofftank (ca.)	380 l	Fuel tank (approx.)
Wassertank (ca.)	700 l	Water tank (approx.)
Kabinen, Standardversion	3/4/5	Cabins
Kojen, Standardversion	6/8/10	Berths
Stehhöhe im Salon (ca.)	2,06 m	Height in salon (approx.)
Großsegel und Rollfock (ca.)	145 m²	Mainsail (battened) and fore sail, standard (approx.)
Masthöhe über Wasserlinie (ca.)	23,25 m	Height of mast above water line (approx.)

Alle Daten verbindlich und ohne Gewähr.

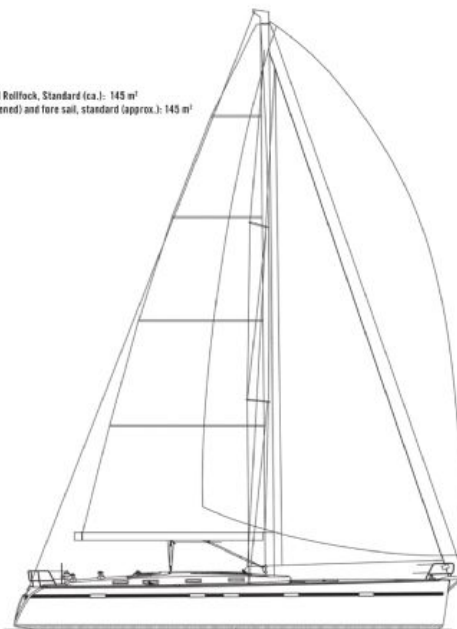
All data is subject to change without notice and given without warranty.

SEGELPLAN UND POLARDIAGRAMM/SAILPLAN AND POLAR DIAGRAM



Das Polardiagramm./The polar diagram.

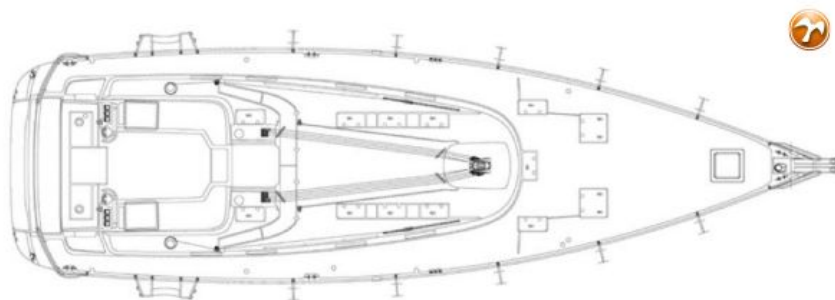
Großsegel und Rollfock, Standard (ca.): 145 m²
Mainsail (battened) and fore sail, standard (approx.): 145 m²



Der Segelplan./The sail plan.



BAVARIA 55 CRUISER



Deckslayout./ Deck layout.



Seitenansicht./Sideview.

