



DE VALK  
YACHT BROKERS



VAN DE STADT 57 ONE OFF



DE VALK  
YACHT BROKERS

BROKERAGE | CHARTER | BERTHS | FINANCE | INSURANCE | YACHT MANAGEMENT

# VAN DE STADT 57 ONE OFF

## BROKER'S COMMENTS

Spectacularly reduced! Really clean is best description for this simply fantastic "go anywhere in the world" built 57 feet Van Der Stadt. Honestly, hardly ever seen a better built yacht. Kept in incredible pristine condition since new. Superb safe strong sailor, great living space on board with two working desk area's as a bonus for work or navigation. Top outside view from salon and a kitchen with all the working space you need, but still safe under sail. Did I mention she is clean? Clean in design, deck, layout and interior. But also clean as you practically can eat from the bilge floor.

*Willem Koopmans*

## SPECIFICATIONS

<b>Dimensions</b>	17.30 x 4.52 x 2.20 (m)	<b>Builder</b>	Private built/Jachtbouw Vels & Partn.
<b>Built</b>	2003	<b>Cabins</b>	3
<b>Material</b>	GRP	<b>Berths</b>	6
<b>Engine(s)</b>	1 x Vetus Deutz DT43 diesel	<b>Hp/Kw</b>	106.00 (hp), 77.91 (kw)
<b>Asking price</b>	€ 295.000 (VAT Paid)	<b>Lying</b>	contact sales office

## CONTACT

<b>Sales office</b>	De Valk Costa Blanca	<b>Telephone</b>	+34 96 50 21 569
<b>Address</b>	Costa Blanca Region 03730 Javea Alicante ES	<b>E-mail</b>	costablanca@devalk.nl

## DISCLAIMER

These particulars are given in good faith as supplied but cannot be guaranteed.



# VAN DE STADT 57 ONE OFF

## GENERAL

Model	VAN DE STADT 57 ONE OFF
Type	sailing yacht
LOA (m)	17,30
LWL (m)	14,25
Beam (m)	4,52
Draft (m)	2,20
Air draft (m)	24,00
Headroom (m)	2,15
Year built	2003
Builder	Private built/Jachtbouw Vels & Partn.
Country	The Netherlands
Designer	Van De Stadt Design
Displacement (t)	19
Ballast (tonnes)	lead in steel 8,3
Gross tonnage	27
CE norm	NA
Hull material	GRP
Hull colour	white
Hull thickness (mm)	40 mm RedCedar, epoxy with Twaron reinforcement
Hull shape	round-bilged Building method gives strong and super isolating effect
Keel type	bulb keel
Bilge keels	yes
Superstructure material	composite Epoxy/foam/epoxy, warm in winter, cool in summer
Deck material	Epoxy
Deck finish	teak
Cockpit deck finish	teak
Antifouling (year)	2024
Dorades	yes
Window material	polycarbonate
Portholes	aluminium



Fuel tank (litre)	epoxy 800, laminated in hull
Level indicator (fuel tank)	yes
Freshwater tank (litre)	epoxy 550, laminated in hull
Level indicator (freshwater)	yes
Greywater tank (litre)	yes
Wheel steering	rack & pinion Edson
Emergency tiller	yes
Extra info	Teak deck is thick enough for re-caulking Sikaflex and sanding.
Extra info	Sanding and re-caulking is an expected job in the next years.

## ACCOMMODATION

Cabins	3
Berths	6
Interior	maple
Floor	Canadian maple
Open cockpit	yes
Deck saloon	Great outdoor view
Headroom saloon (m)	1,80/2,15
Heating	Kabola diesel
Chart table	yes
Aft Cabin	yes
Dinette	yes
Galley	yes
Sink	stainless steel
Cooker	ceramic Force 10
Oven	Force 10
Fridge	With freezing compartment
Hot water system	220V + engine Boiler (stainless steel)
Water pressure system	electrical
Kettle	yes
Coffee maker	yes



# VAN DE STADT 57 ONE OFF

Owners cabin	double bed
Bed length (m)	2
Wardrobe	hanging and shelves
Bathroom	en suite
Toilet	en suite Separate from bathroom
Toilet system	Sealock
Wash basin	in the bathroom
Shower	en suite
Guest cabin 1	double bed
Bathroom	shared
Toilet	shared Separate from bathroom
Toilet system	Sealock
Wash basin	in the bathroom
Shower	shared
Guest cabin 2	bunk bed
Bed length (m)	2
Bathroom	shared
Toilet	shared Separate from bathroom
Toilet system	yes
Wash basin	in the bathroom
Shower	shared

## MACHINERY

No of engines	1
Make	Vetus Deutz
Type	DT43
HP	106
kW	77.91
Fuel	diesel
Year installed	2003
Maximum speed (kn)	8,5



Cruising speed (kn)	6,5
Consumption (l/hr)	4
Engine hours	1633
Engine cooling system	freshwater heat exchanger
Drive	shaft
Shaft seal	yes
Engine controls	yes
Gearbox	mechanical Python coupling
Bowthruster	electric
Propeller type	folding Max Prop
Propeller blades	3
Propeller shaft material	stainless steel
Manual bilge pump	2x
Electric bilge pump	yes
Bilge alarm	yes
Electrical installation	12/24/228
Generator	silent separator Mastervolt Whisper 8000/3000
Running hours generator	631
Start battery	2018
Service battery	2018
Generator battery	yes
Bowthruster battery	yes
Windlass battery	yes
Battery monitor	yes
Battery charger	yes
Inverter	Will be renewed
Shorepower	with cable
Watermaker	Needs repair

## NAVIGATION

Compass	yes
---------	-----



Electric compass	On autopilot
Depth sounder/log	B&G
Windset	B&G H3000
VHF	Furuno
Autopilot	B&G
Rudder angle indicator	B&G
Plotter	Furuno Navionics Navnet
Radar/GPS	Furuno GP-31
Navtex	Furuno NX-300
Personal computer	yes
EPIRB	yes
Navigation lights	yes

## EQUIPMENT

Fixed windscreen	yes
Cockpit table	Removable, teak
Bathing platform	yes
Boarding ladder	yes
Bow ladder	yes
Gangway	yes
Deck shower	yes
Anchor	CQR Plough 27 kg
Anchor chain	yes
Anchor 2	Delta 25 kg
Anchor chain	80m galvanised , chain stopper and 2x 100 m rope
Windlass	electrical Lewmar 3 Gypsy/Capstan
Dinghy	yes
Outboard	yes
Sea railing	yes
Railing side opening gates	yes
Life raft	valise (or bag)



Life raft (pers)	6
Last life raft survey	Needs service
Lifejackets	yes
Lifebuoy	yes
Danbuoy	yes
Radar reflector	yes
Fenders	yes
Mooring lines	yes
TV	2x (salon, guest cabin)
Radio-cd player	yes
Speakers in salon	yes
Fire extinguisher	Needs data check
Extinguisher in engine room	yes

## RIGGING

Rigging	sloop
Brand mast	Hallspars
Material mast	aluminium coated White
Spreaders	3
Keel stepped mast	yes
Mainsail	80 m2 In furling boom, Leisurefurl Cruising Offshore, very good cond.
Mainsail cover	In-boom system
Furling boom	yes
Main staysail	23m2 Cruising Offshore
Jib	In good maintained condition
Genoa	61 m2 Cruising Offshore
Genoa furler	Reckmann
Cutter furler	Reckmann
Stormjib	17 m2 Trysail Cruising Offshore Heavy Duty
Reefing System	main in-boom furling



Boomvang

gasspring

Genoa sheetwinches

Electric

Spinnaker winch

yes

Extra info

Clean deck, all sheets below deck



# VAN DE STADT 57 ONE OFF



# VAN DE STADT 57 ONE OFF



# VAN DE STADT 57 ONE OFF

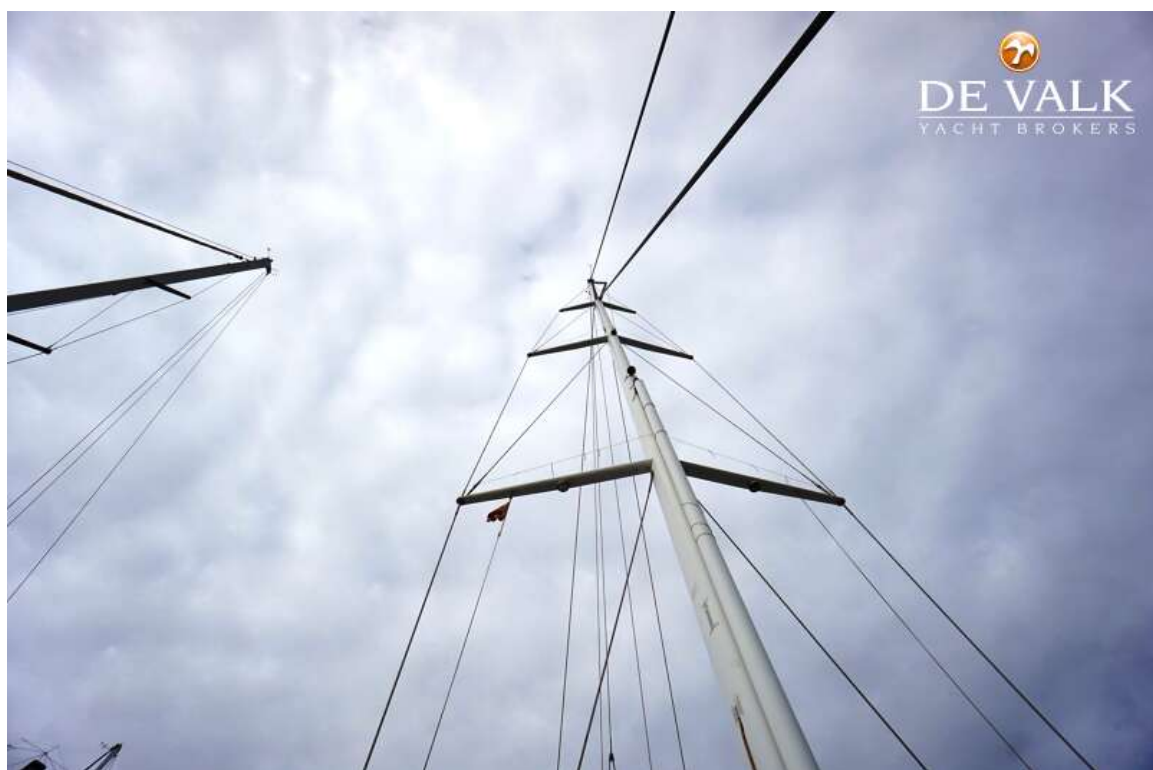


# VAN DE STADT 57 ONE OFF





# VAN DE STADT 57 ONE OFF





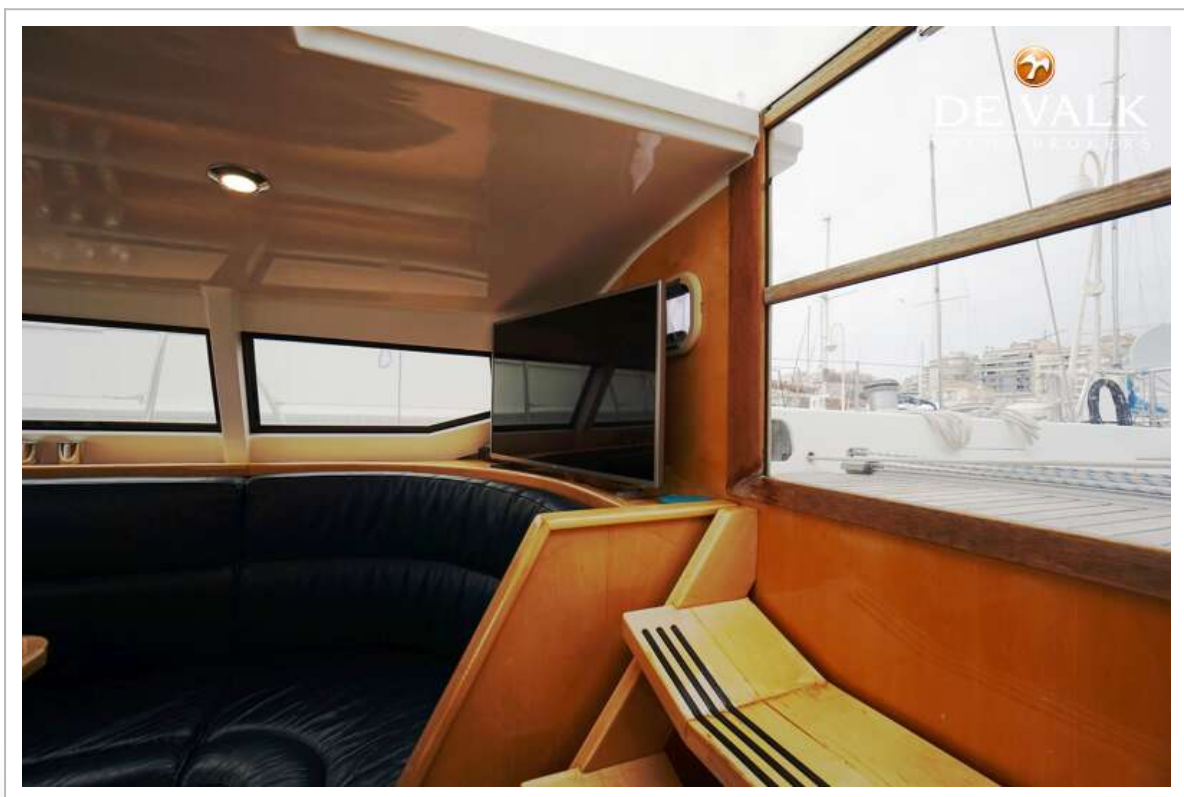
# VAN DE STADT 57 ONE OFF



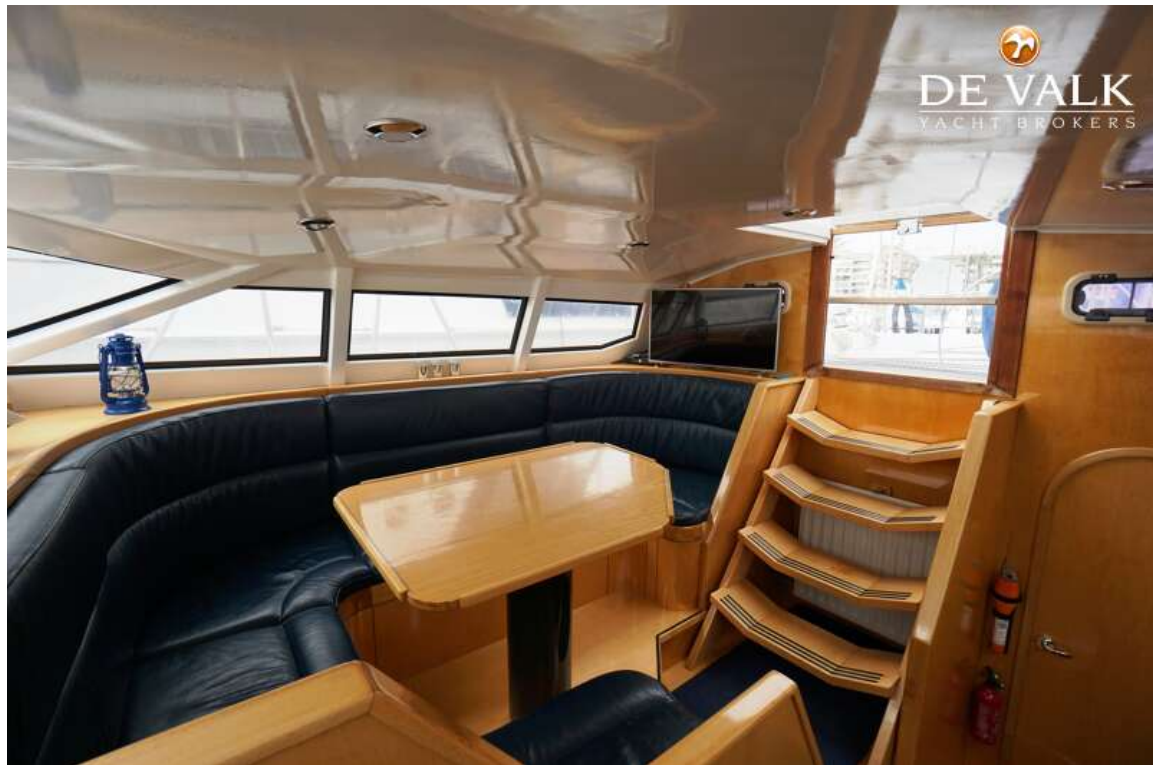
# VAN DE STADT 57 ONE OFF



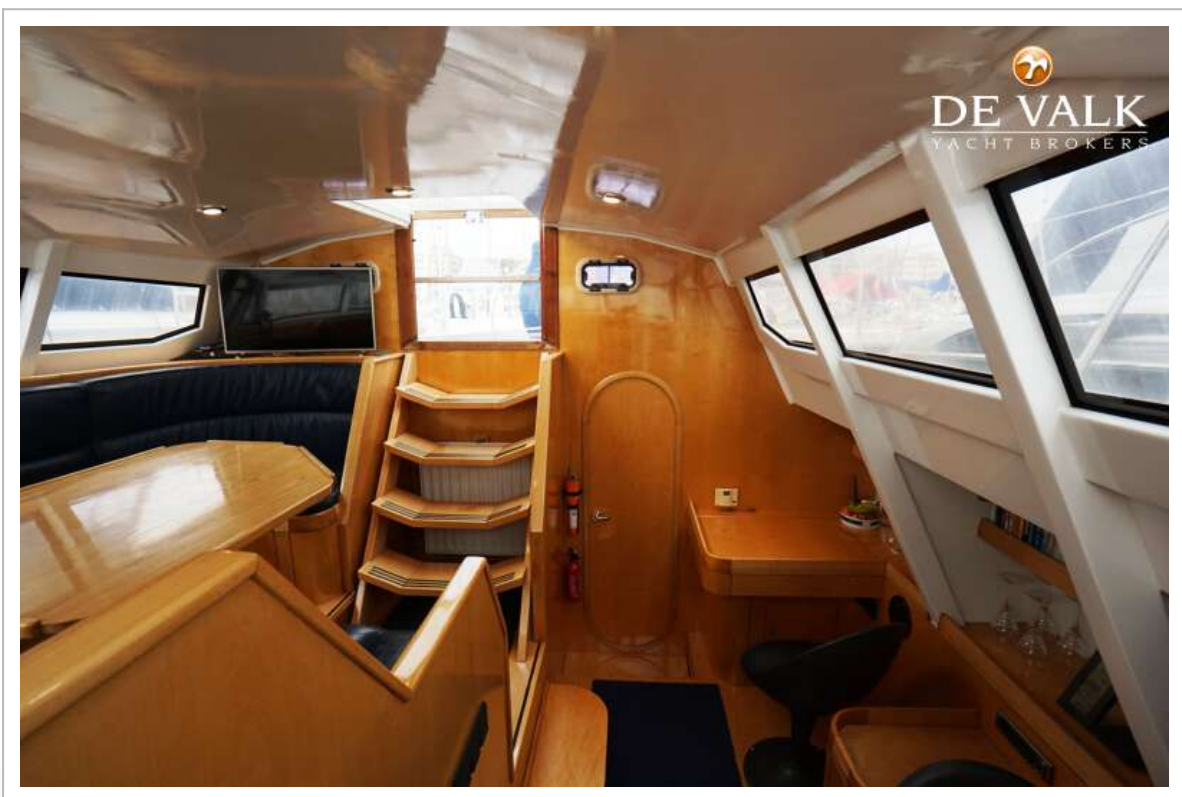
# VAN DE STADT 57 ONE OFF



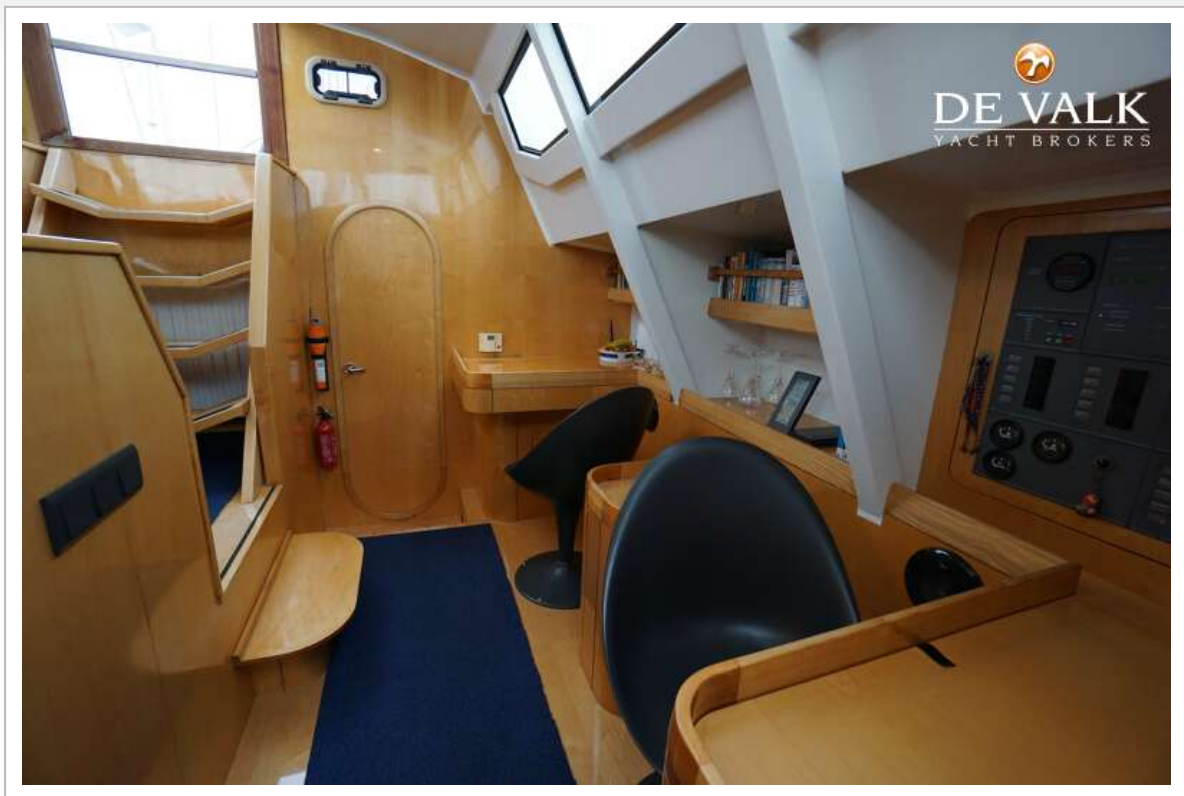
# VAN DE STADT 57 ONE OFF

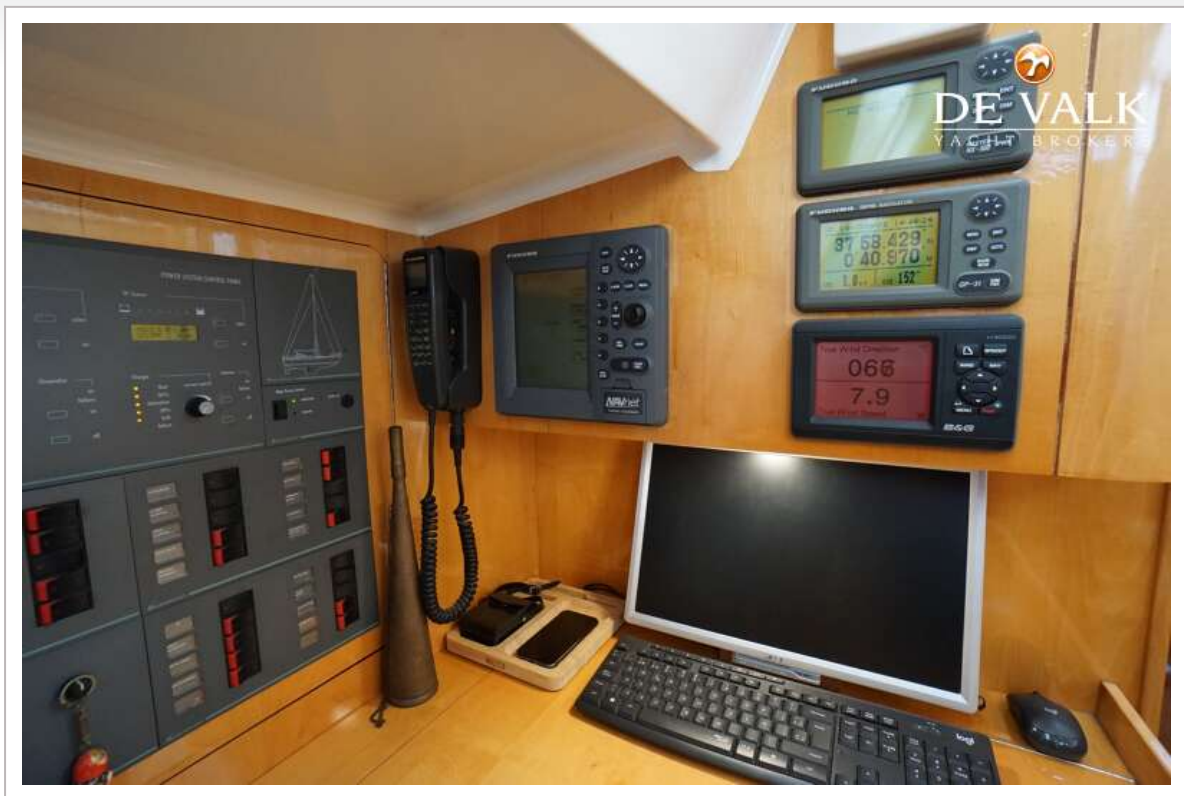


# VAN DE STADT 57 ONE OFF

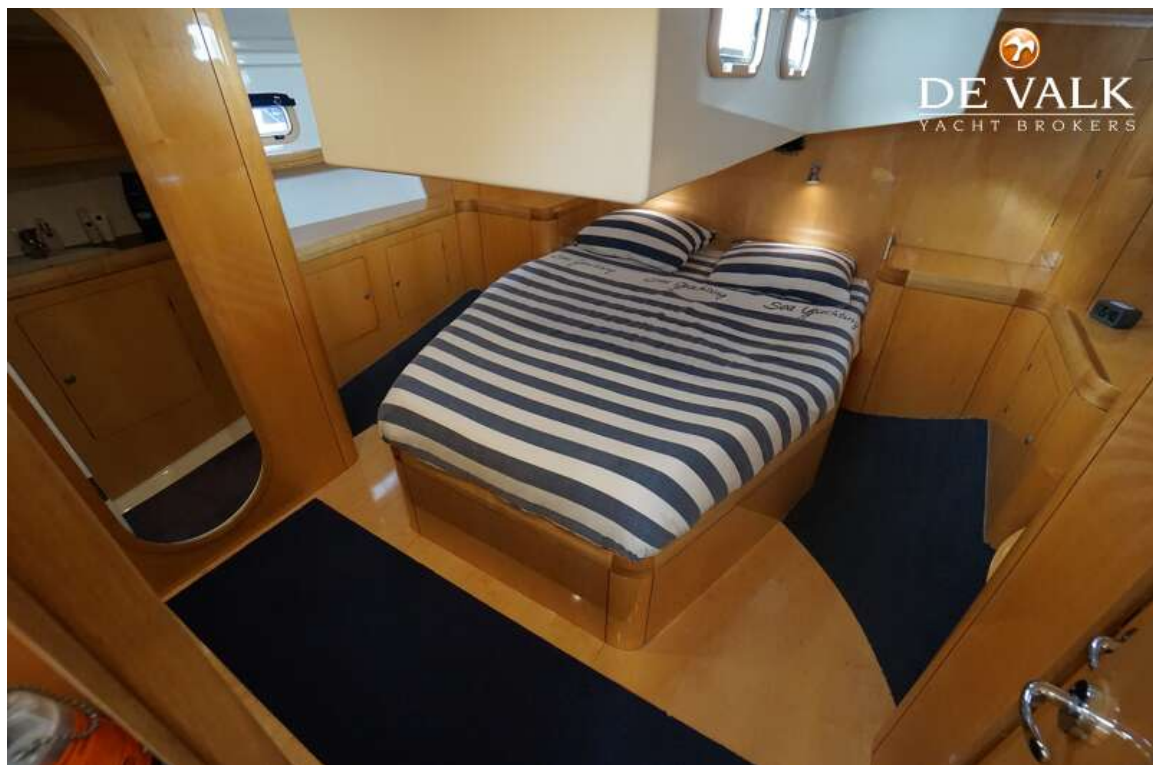


# VAN DE STADT 57 ONE OFF

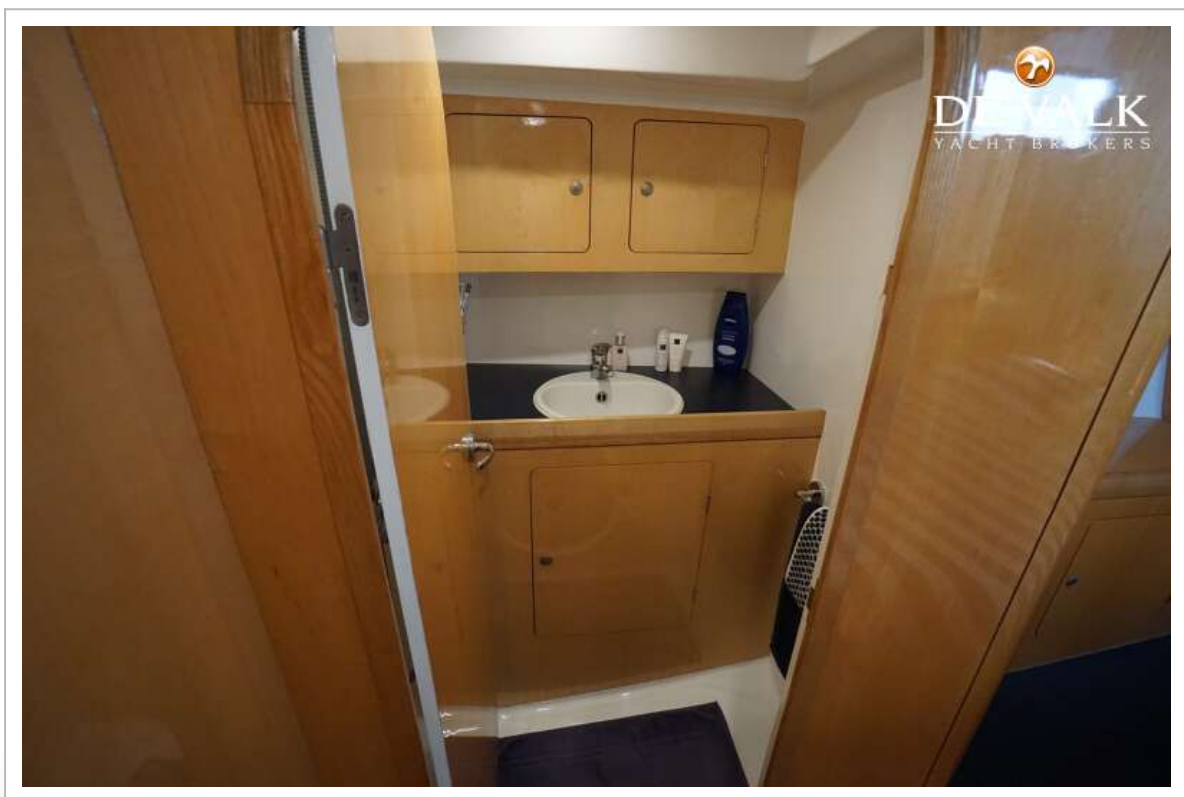
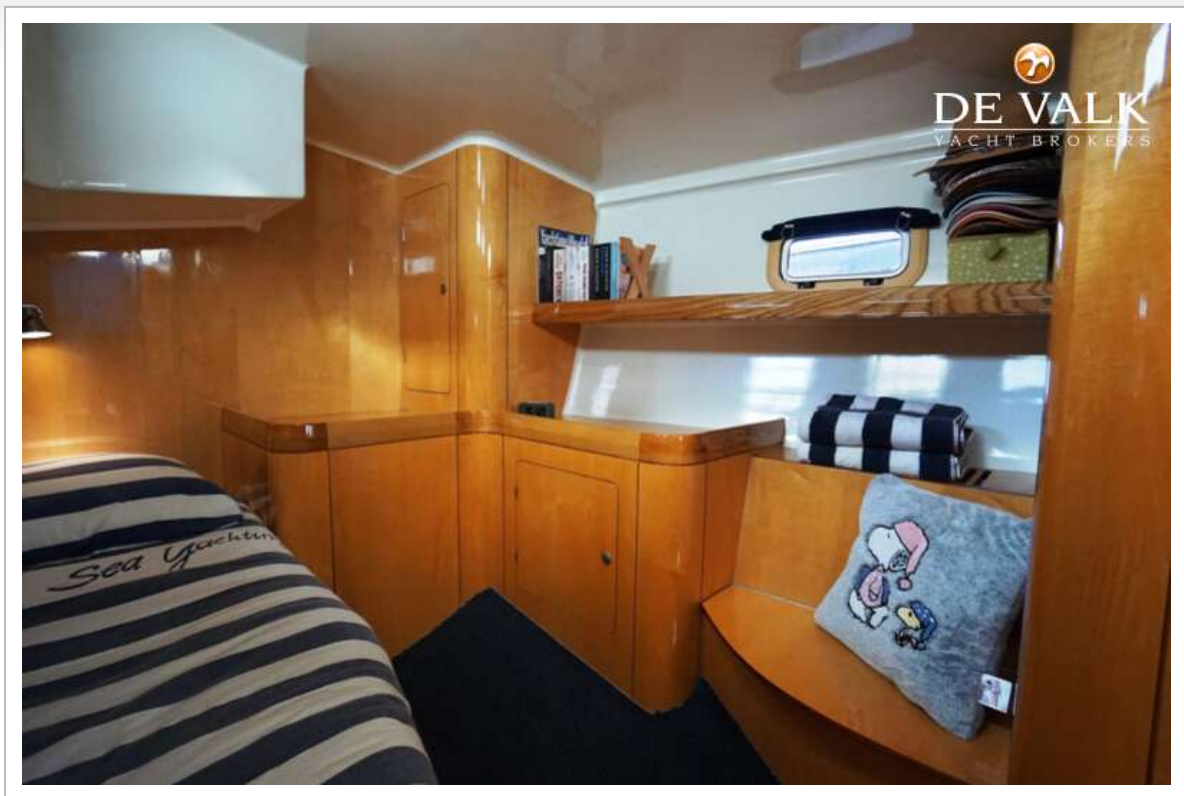




# VAN DE STADT 57 ONE OFF



# VAN DE STADT 57 ONE OFF



# VAN DE STADT 57 ONE OFF

