



DE VALK

YACHT BROKERS



HALLBERG RASSY 352



DE VALK
YACHT BROKERS

BROKERAGE | CHARTER | BERTHS | FINANCE | INSURANCE | YACHT MANAGEMENT

HALLBERG RASSY 352

BROKER'S COMMENTS

The Hallberg Rassy 352 is being sold by her third owner. This Hallberg Rassy 352 is a good example of excellent craftsmanship. She has good sailing qualities and a comfortable interior with walk through to the aft cabin under deck. 'Zeevlam' is equipped with a large aft cabin, a Volvo Penta 50HP diesel engine and lot's of upgrades.

Reinier van der Wolf

SPECIFICATIONS

Dimensions	10.54 x 3.38 x 1.67 (m)	Builder	Hallberg Rassy Varv AB
Built	1979	Cabins	2
Material	GRP	Berths	7
Engine(s)	1 x Volvo Penta MD 21 diesel	Hp/Kw	50.00 (hp), 36.75 (kw)
Asking price	sold (VAT)	Lying	at sales office

CONTACT

Sales office	De Valk Monnickendam B.V.	Telephone	+31 (0)299 65 63 50
Address	Hoogedijk 6 1145 PM Katwoude NL	E-mail	monnickendam@devalk.nl

DISCLAIMER

These particulars are given in good faith as supplied but cannot be guaranteed.



GENERAL

Model	HALLBERG RASSY 352
Type	sailing yacht
LOA (m)	10,54
LWL (m)	8,70
Beam (m)	3,38
Draft (m)	1,67
Headroom (m)	1,87
Year built	1979
Builder	Hallberg Rassy Varv AB
Country	Sweden
Designer	Christoph Rassy / Olle Enderlein
Displacement (t)	6,7
Ballast (tonnes)	cast iron 3
CE norm	NA
Hull material	GRP
Hull colour	white With blue stripping
Hull shape	S-bilged
Keel type	long keel
Superstructure material	GRP
Rubbing strake	Bronze
Deck material	GRP
Deck finish	teak
Superstructure deck finish	teak
Cockpit deck finish	teak 2010
Window frame	aluminium
Window material	perspex
Deckhatch	3x Gebo
Fuel tank (litre)	stainless steel
Level indicator (fuel tank)	VDO
Freshwater tank (litre)	stainless steel



Level indicator (blackwater)	VDO
Wheel steering	mechanical Edson
Emergency tiller	yes
Extra info	Teak cabin deck (front / back) replaced in 2010.

ACCOMMODATION

Cabins	2
Berths	7
Interior	mahogany
Floor	wood
Saloon	yes
Headroom saloon (m)	1,87
Chart table	yes
Aft Cabin	yes
Galley	yes
Countertop	plastic
Sink	stainless steel
Cooker	calor gas 3 burner Smev
Oven	Smev
Gas alarm	yes
Fridge	toploader
Hot water system	220V + engine Boiler (2012)
Water pressure system	electrical 2017
Manual and/or foot pump	yes
Owners cabin	double bed + single bed
Wardrobe	hanging
Bathroom	shared
Toilet	shared 2010
Toilet system	manual Jabsco
Wash basin	in the bathroom
Shower	shared



Guest cabin 1	v-bed
Wardrobe	hanging/drawers/shelves
Extra info	sofa cushions replaced in 2010. new mattresses in 2012. inside upholstery / interior 2010.

MACHINERY

No of engines	1
Make	Volvo Penta
Type	MD 21
HP	50,00
kW	36,75
Fuel	diesel
Year installed	1979
Year of overhaul	2010
Maximum speed (kn)	7,5
Cruising speed (kn)	6
Engine cooling system	freshwater heat exchanger
Drive	shaft
Gearbox	mechanical Volvo Penta
Exhaust	watercooled
Propeller type	yes
Propeller blades	yes
Propeller shaft material	stainless steel
Manual bilge pump	yes
Electric bilge pump	yes
Electrical installation	12/220V
Batteries	yes
Start battery	Optima Blue (2018)
Service battery	yes
Battery charger/inverter	Victron Phoenix Multi 12/1300/70
Shorepower	with cable



Extra info

engine compartment completely renewed and new electric wiring in 2010.

NAVIGATION

Compass

Sestrel

Electric compass

Raymarine ST80 Compass

Depth sounder

Raymarine ST60+ (2008)

Log

Raymarine ST60+

Windset

combined with Raymarine ST60 Raymarine ST60+

VHF

Sailor

Autopilot

+ smart controller (2013) Raymarine Smartpilot (2013)

Radar

Raymarine digital Radar (2013)

Plotter

Raymarine E80 (2008)

Electronis chart(s)

yes

AIS transponder

2013

Extra info

Router (2013)

Extra info

Navpod (2013)

EQUIPMENT

Fixed windscreen

yes

Sprayhood

yes

Cockpit cover

yes

Cockpit table

yes

Boarding ladder

stainless steel

Anchor

CQR Plough

Anchor chain

yes

Windlass

electrical Lewmar (2017)

Sea railing

wire

Pushpit

yes

Pulpit

yes

Life raft

container Plastimo Cruiser 6



Life raft (pers)	6
Last life raft survey	2014
Fenders	yes
Mooring lines	yes
Speakers in salon	not connected
Fire extinguisher	yes

RIGGING

Rigging	sloop
Standing rigging	wire
Brand mast	Seldén
Material mast	aluminium
Spreaders	2
Mainsail	2008
Stoway mast	yes
Genoa	2006
Genoa furler	Furlex
Genoa cover	yes
Spinnaker	hardly used
Backstay adjuster	mechanical
Boomvang	mechanical and tackle Selden
Genoa sheetwinches	2x Andersen 40 ST two speed
Multifunctional winches	2x Andersen 18 ST single speed
Spi-pole	aluminium



HALLBERG RASSY 352



HALLBERG RASSY 352



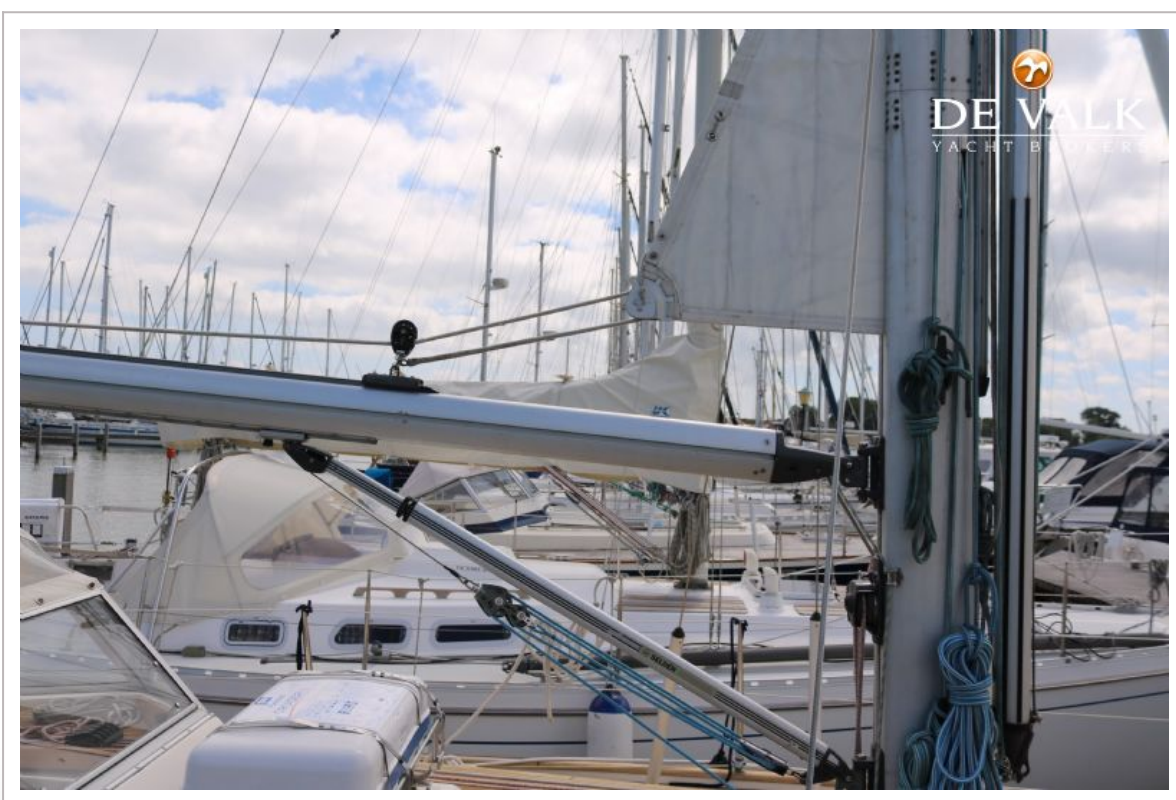
HALLBERG RASSY 352



HALLBERG RASSY 352



HALLBERG RASSY 352



HALLBERG RASSY 352



HALLBERG RASSY 352



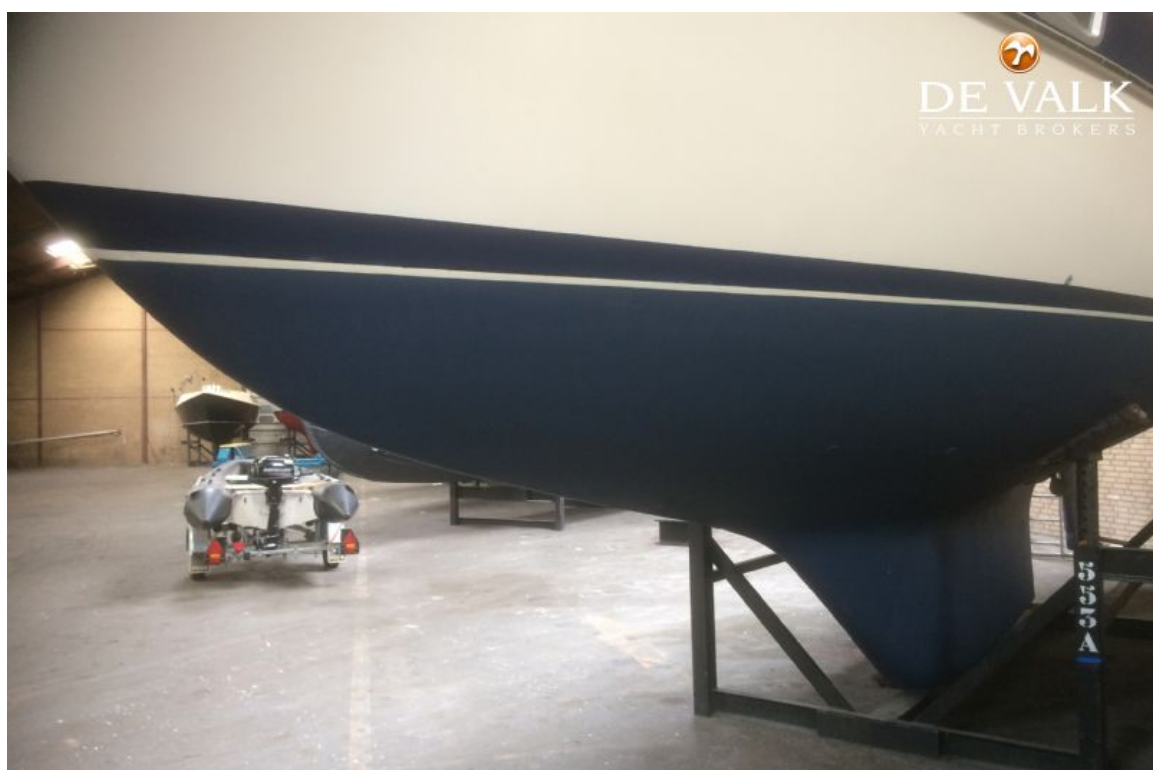
HALLBERG RASSY 352



HALLBERG RASSY 352



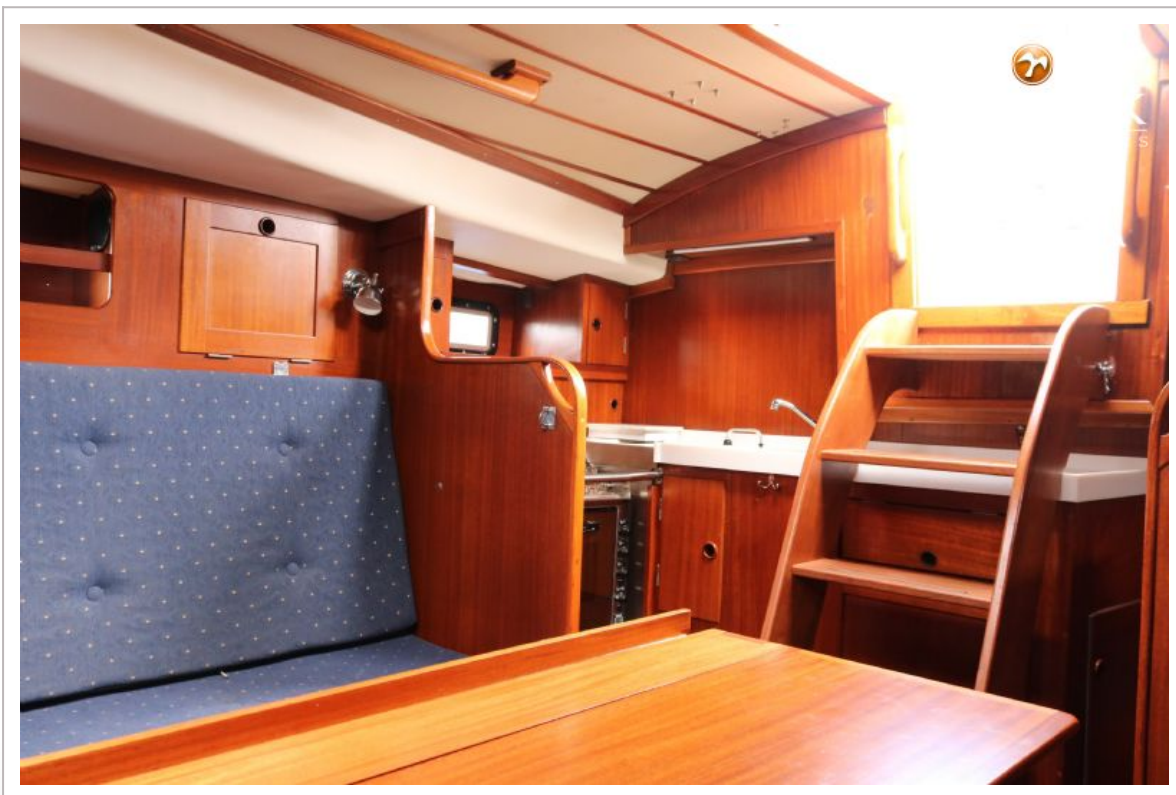
HALLBERG RASSY 352



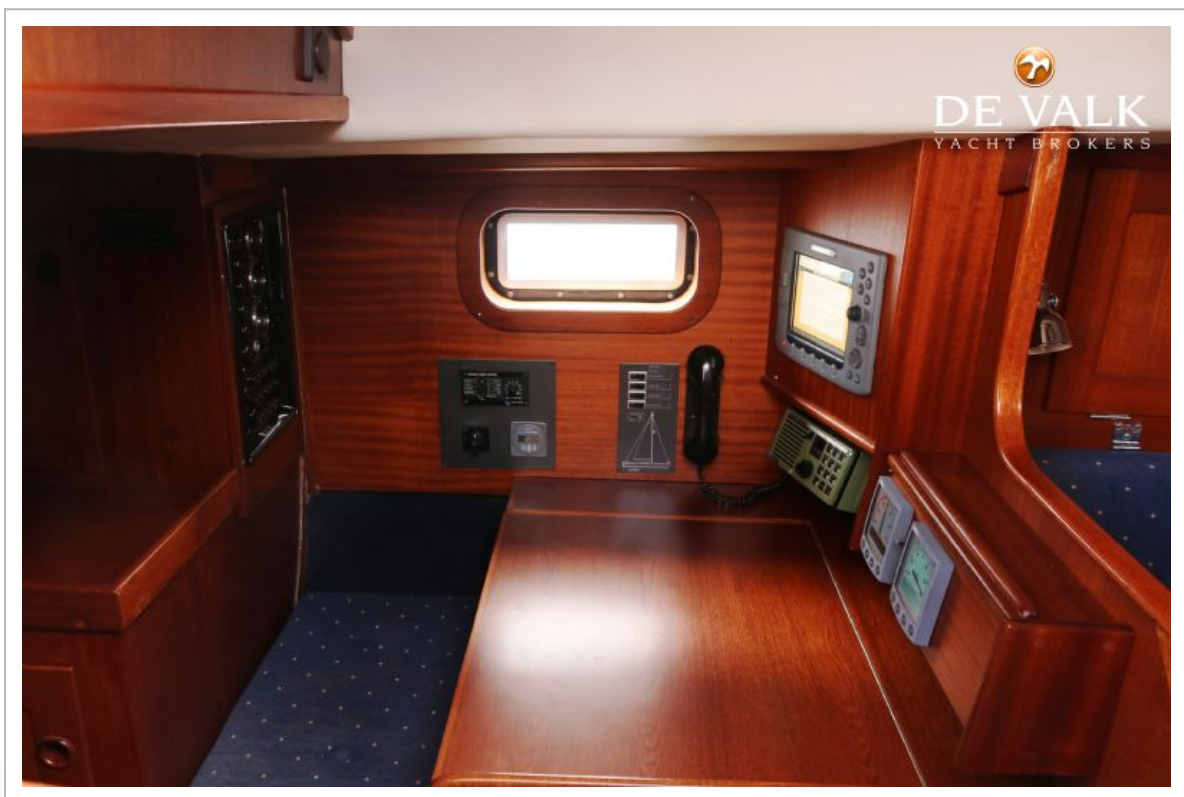
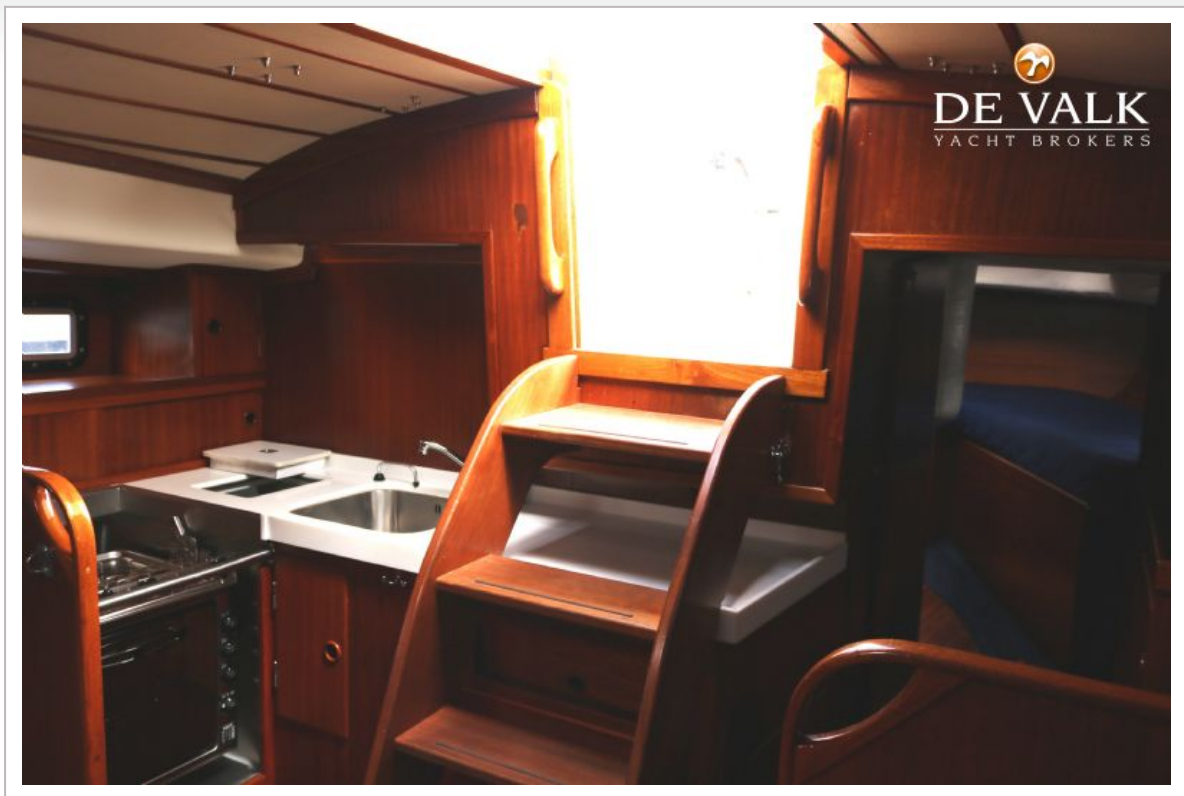
HALLBERG RASSY 352



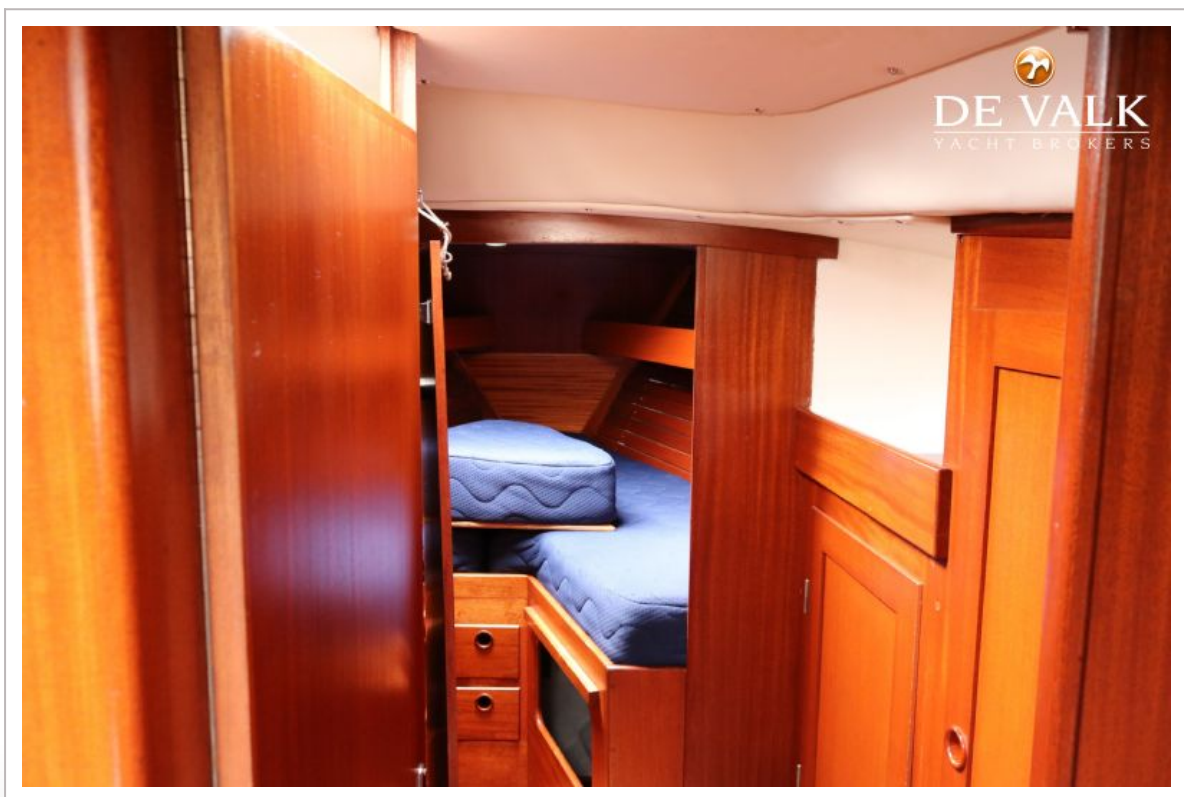
HALLBERG RASSY 352



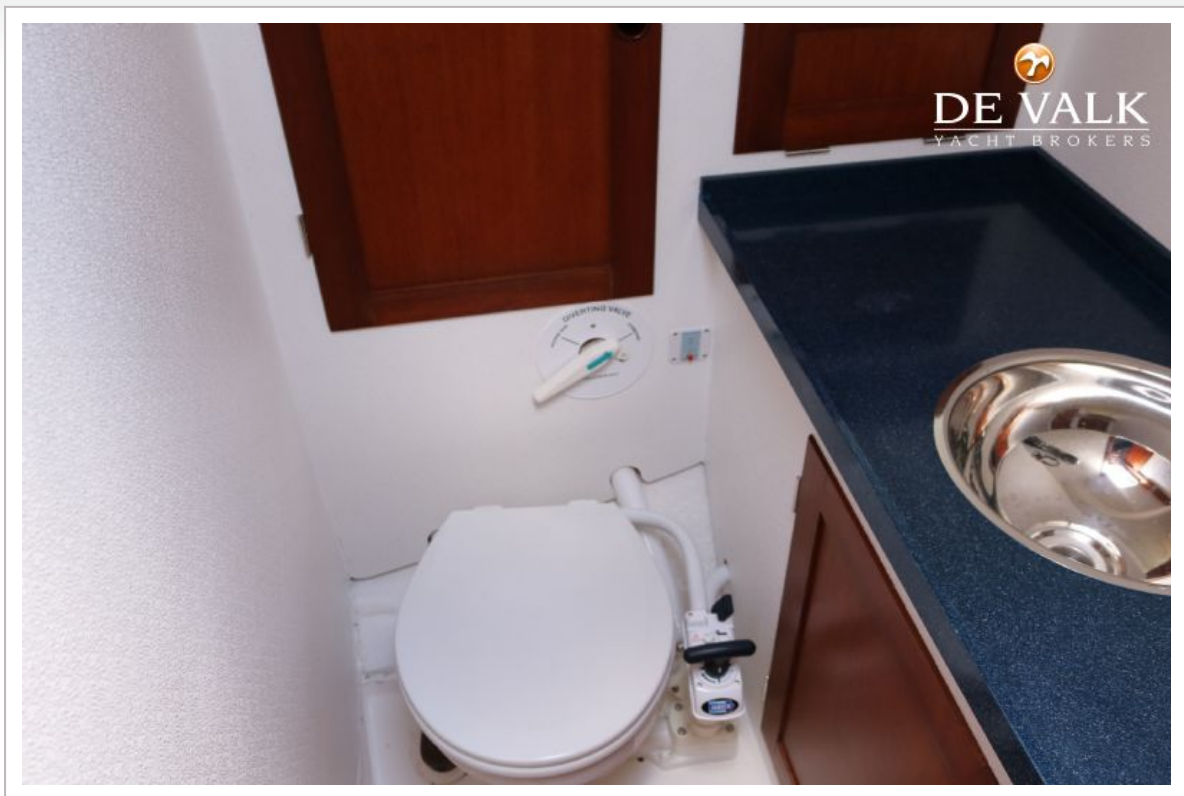
HALLBERG RASSY 352



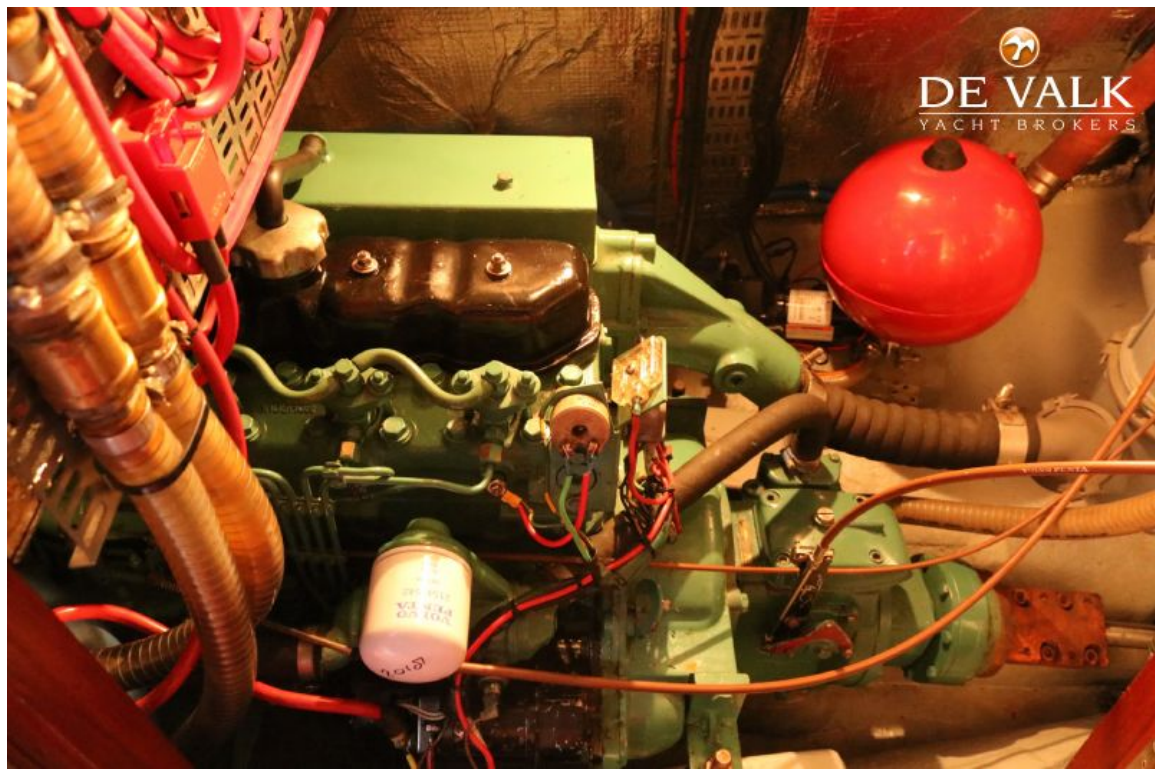
HALLBERG RASSY 352



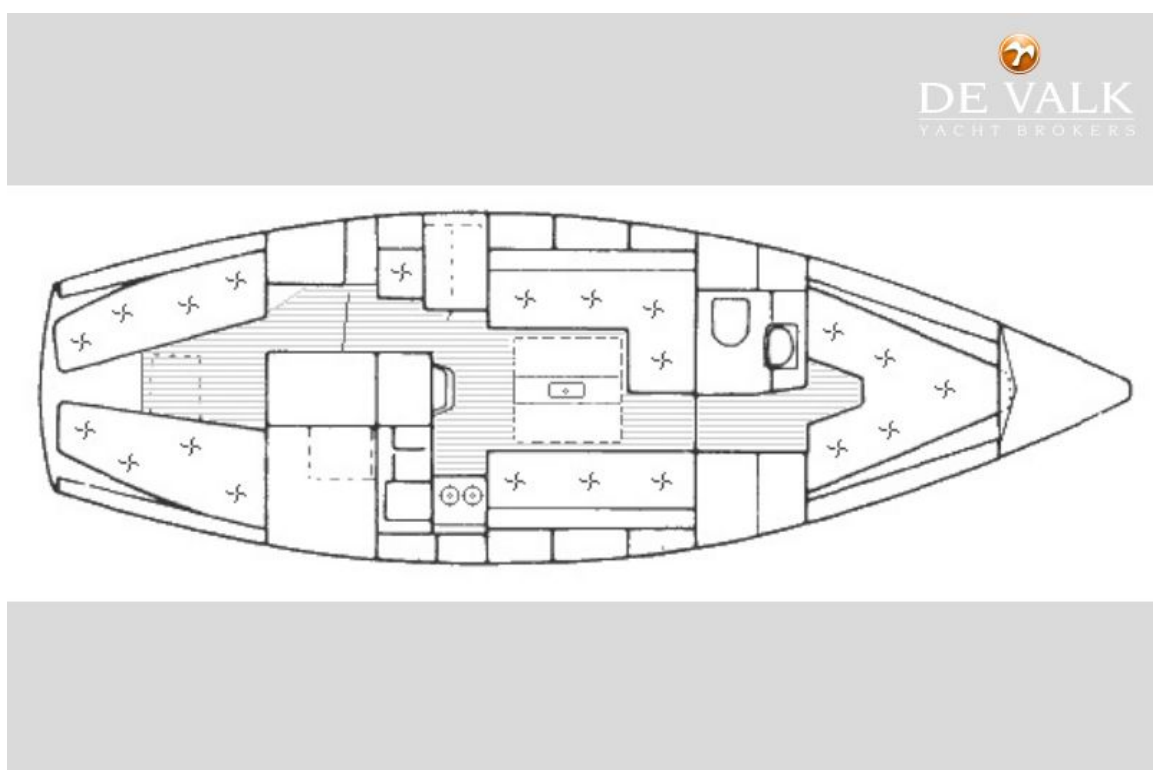
HALLBERG RASSY 352



HALLBERG RASSY 352



HALLBERG RASSY 352



HALLBERG RASSY 352

