



DE VALK
YACHT BROKERS



ALMARINE MY 18.50



DE VALK
YACHT BROKERS

ALMARINE MY 18.50

BROKER'S COMMENTS

Almarine 18.50 "Eureka" is a beautiful Dutch built, CE A certified motoryacht with all the luxury for a longer comfortable staying on board. Spacious and luxurious interior with 3-cabin lay-out, fully insulated, double glazing and equipped with central heating, hydraulic double steering (inside and flybridge), hydraulic bow and stern thruster, Kohler generator, auto pilot and other navigation equipment are just a few items of a long equipment list. Professionally and very well maintained, so in a ready to go condition. Viewing in Amsterdam is possible after appointment.

Harald Padberg

SPECIFICATIONS

Dimensions	18.50 x 5.40 x 0,90 / 1.78 (m)	Builder	De Treffer, Tilburg
Built	2009	Cabins	3
Material	Steel	Berths	8
Engine(s)	1 x Vetus Deutz DTA67805E diesel	Hp/Kw	286.00 (hp), 210.21 (kw)
Asking price	sold (VAT)	Lying	elsewhere / Not at sales office

CONTACT

Sales office	De Valk Monnickendam B.V.	Telephone	+31 (0)299 65 63 50
Address	Hoogedijk 6 1145 PM Katwoude NL	E-mail	monnickendam@devalk.nl

DISCLAIMER

These particulars are given in good faith as supplied but cannot be guaranteed.



GENERAL

Model	ALMARINE MY 18.50
Type	motor yacht
LOA (m)	18,50
LWL (m)	16,40
Beam (m)	5,40
Draft (m)	1,78
Draft min (m)	0,90
Year built	2009
Builder	De Treffer, Tilburg
Country	The Netherlands
Displacement (t)	50
Net tonnage	42
CE norm	A
Hull material	steel
Hull colour	blue
Hull thickness (mm)	6
Hull shape	multi hard chine
Superstructure material	steel
Superstructure (mm)	5
Deck plate thickness (mm)	4
Rubbing strake	stainless steel 6 mm
Deck material	steel
Deck finish	non-skid paint
Superstructure deck finish	non-skid paint
Antifouling (year)	July 2018
Window frame	aluminium
Window material	double glazing
Deckhatch	yes
Portholes	13
Insulation	glasswool 5 - 8 cm



Flybridge	yes
Mast can be lowered	hydraulic
Fuel tank (litre)	steel 3.800
Fuel tank 2 (litre)	steel 3.800
Level indicator (fuel tank)	yes
Fuel daytank (litre)	steel 800
Level indicator (daytank)	yes
Freshwater tank (litre)	polyethylene 2 x 450
Level indicator (freshwater)	yes
Blackwater tank (litre)	polyethylene 500
Level indicator (blackwater)	yes
Blackwater tank extraction	deck extraction + uw line
Greywater tank (litre)	polyethylene 500
Level indicator (greywater)	yes
Wheel steering	hydraulic
Inside helm position	yes
Outside helm position	with remote control
Flybridge helm position	hydraulic
Emergency tiller	yes
More info on paintwork	two-components system July 2018
Extra info	air draft 5.50 M - mast down

ACCOMMODATION

Cabins	3
Berths	8
Interior	teak
Floor	carpet
Saloon	yes
Headroom saloon (m)	2.10 M
Heating	central heating
Navigation center	in cockpit



Chart table	in cockpit
Opening door to cockpit	2 X
Opening door to aft deck	yes
Galley	yes
Countertop	marble
Sink	stainless steel
Cooker	electric 4-burner/4-pits/4-Brenner
Oven	Siemens
Microwave	Whirlpool
Fridge	Whirlpool
Freezer	100 L
Hot water system	on central heating
Water pressure system	electrical
Owners cabin	French bed
Bed length (m)	2.05 M
Wardrobe	yes
Bathroom	en suite
Toilet	en suite
Toilet system	electric
Wash basin	in the bathroom
Shower	en suite
Guest cabin 1	French bed
Bed length (m)	2.05 M
Wardrobe	yes
Bathroom	shared
Toilet	shared
Toilet system	electric
Wash basin	in the bathroom
Guest cabin 2	bunk bed 2 x
Bed length (m)	2.00 M
Wardrobe	yes
Bathroom	shared



Toilet	shared
Toilet system	electric
Wash basin	in the bathroom
Shower	shared
Washing machine	Siemens
Dryer	Siemens

MACHINERY

No of engines	1
Make	Vetus Deutz
Type	DTA67805E
HP	286,00
kW	210,21
Fuel	diesel
Maximum speed (kn)	10 kn
Cruising speed (kn)	8
Consumption (l/hr)	24 / 2000 rpm
Engine hours	361
Engine cooling system	freshwater heat exchanger Intercooling
Drive	shaft
Engine controls	electrical Glendinning
Gearbox	hydraulic Hurth
Bowthruster	300 kgf / 20kW hydraulic
Sternthruster	300 kgf / 20kW hydraulic
Thrust bearing	yes
Propeller type	fixed
Propeller blades	4
Propeller shaft material	stainless steel 5 mm
Shaft lubrication	water
Electric bilge pump	3 X
Bilge alarm	yes



Generator	Kohler 13 kW
Start battery	2 x 100 Ah 03-2017
Service battery	4 x 220 Ah 03-2017
Generator battery	1 x 100 Ah 03-2017
Battery monitor	Mastervolt
Battery charger	Mastervolt Mass Sine 24/75A
Inverter	Mastervolt Mass Sine 220 V 24/2500
Shorepower	with cable 32 + 16 Amp.

NAVIGATION

Compass	Cassebs & Plath
Electric compass	Furuno PG-1000
Depth sounder/log	Airmar 235 DST-MSE
Windset	yes
VHF	Icom IC-M503 + DSC-100 controller
VHF handheld	Icom IC-M72
Autopilot	Furuno FAP-300
Radar	Furuno 1944C-BB
GPS	Furun GPS-31 & GP-320B
Weather receiver	Icom PCR-1000
Navtex	Furuno NX-300
Personal computer	yes
EPIRB	yes
Camera	yes
Navigation lights	yes
Searchlight	yes
Loudhailer	Intercom LH-3000
Extra info	Meteocom 6 & Max Sea software
Extra info	Intercom system in all cabins

EQUIPMENT



Cockpit cushions	yes
Bathing platform	yes
Deck shower	at bathing platform
Anchor	Pool
Anchor chain	40 M - 10 mm
Anchor 2	Pool
Anchor chain	40 M - 10 mm
Windlass	hydraulic
Deck wash	yes
Sea railing	stainless steel
Railing side opening gates	2 X
Life raft (pers)	container 2 x 6
Last life raft survey	must be surveyed
Wiper	5 x
Horn	air pressure
Fenders	yes
Mooring lines	yes
TV	yes
TV receiver	Digitenne
Radio-cd player	yes
Surround Sound System	Bose
Sub-woofer	Bose
Speakers in salon	Bose
Clock - barometer	yes
Fire extinguisher	inspection expired 4 X
Extinguisher in engine room	inspection expired Co2 system



ALMARINE MY 18.50



ALMARINE MY 18.50







ALMARINE MY 18.50





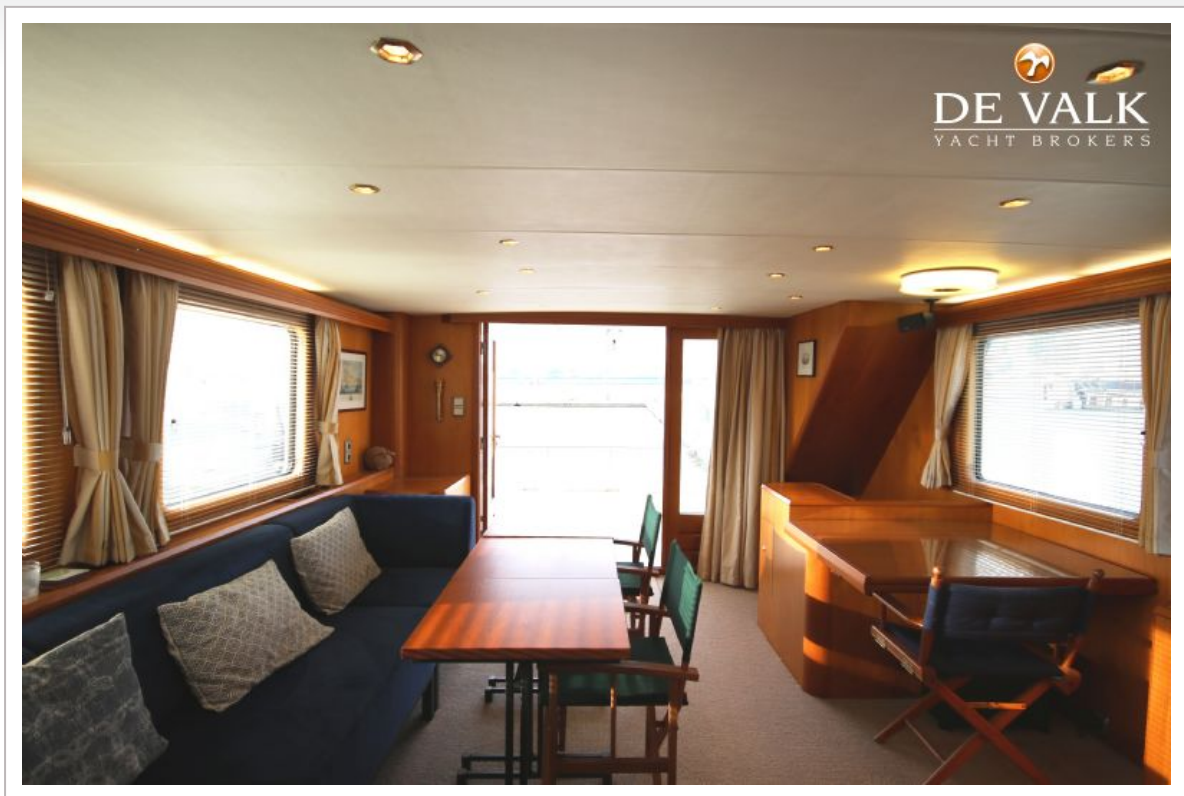
ALMARINE MY 18.50



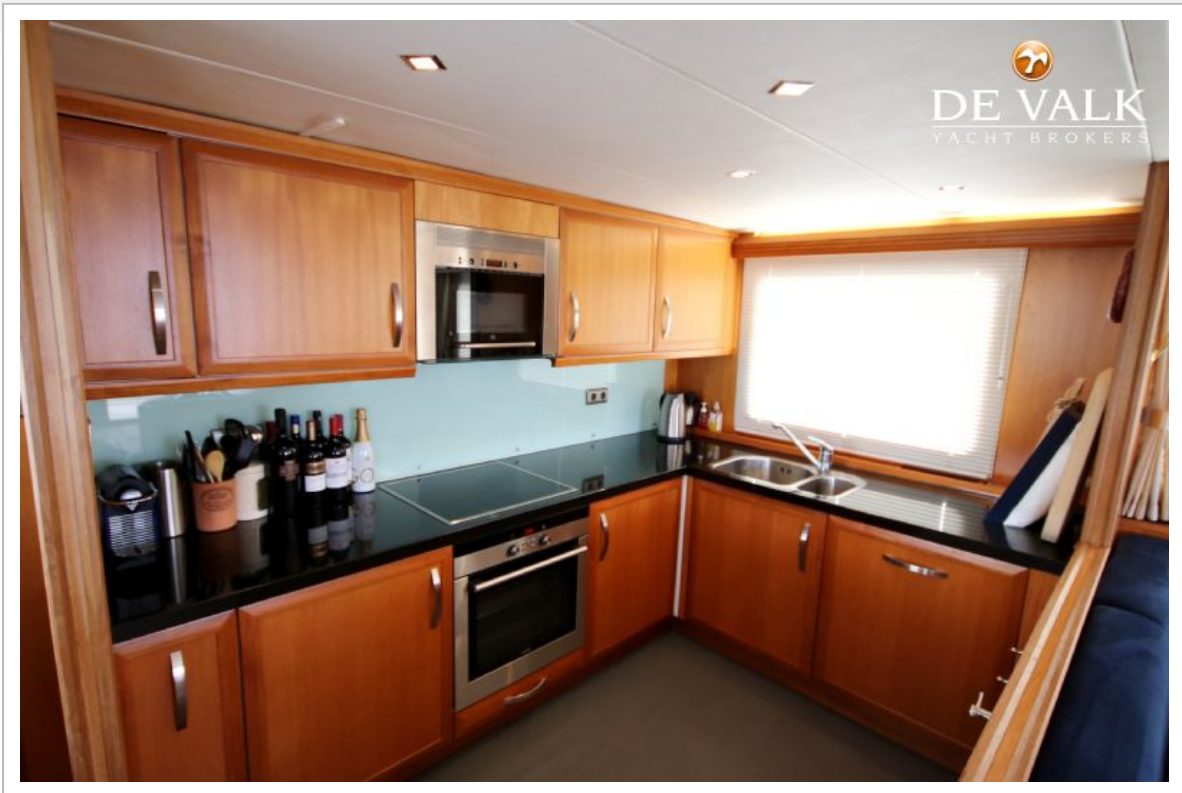
ALMARINE MY 18.50



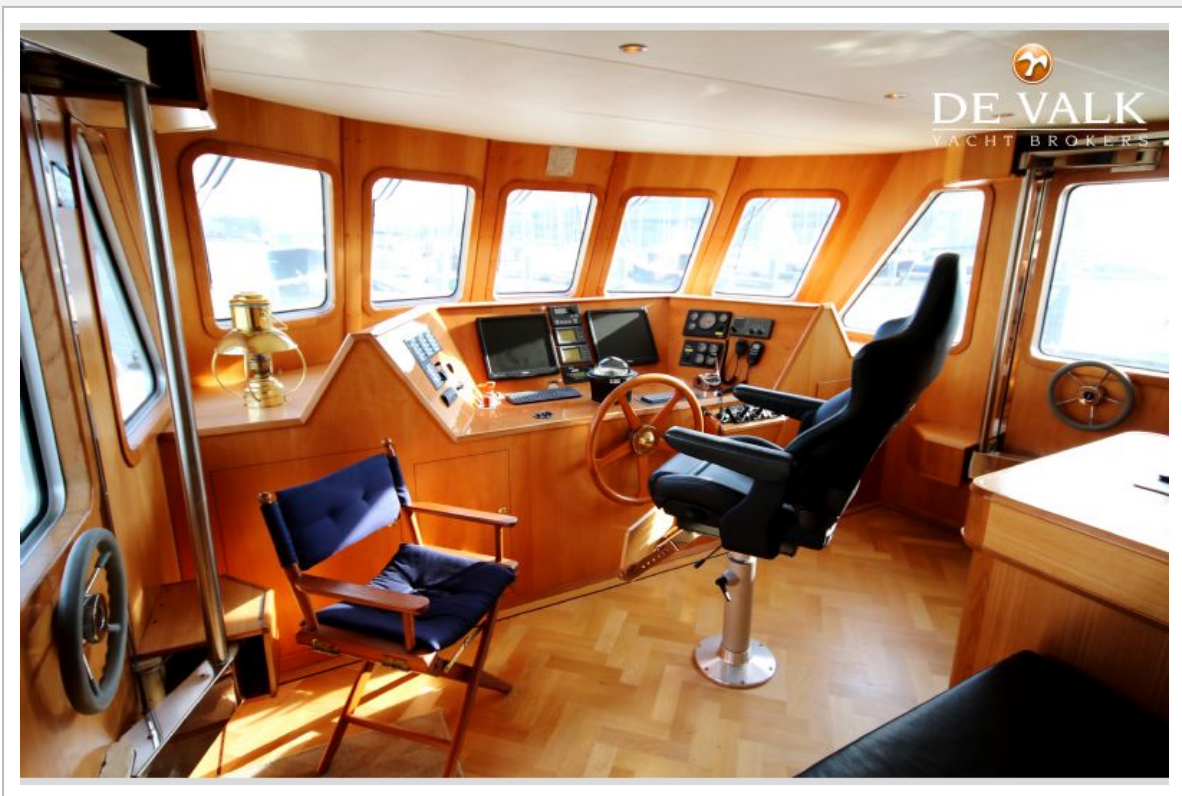




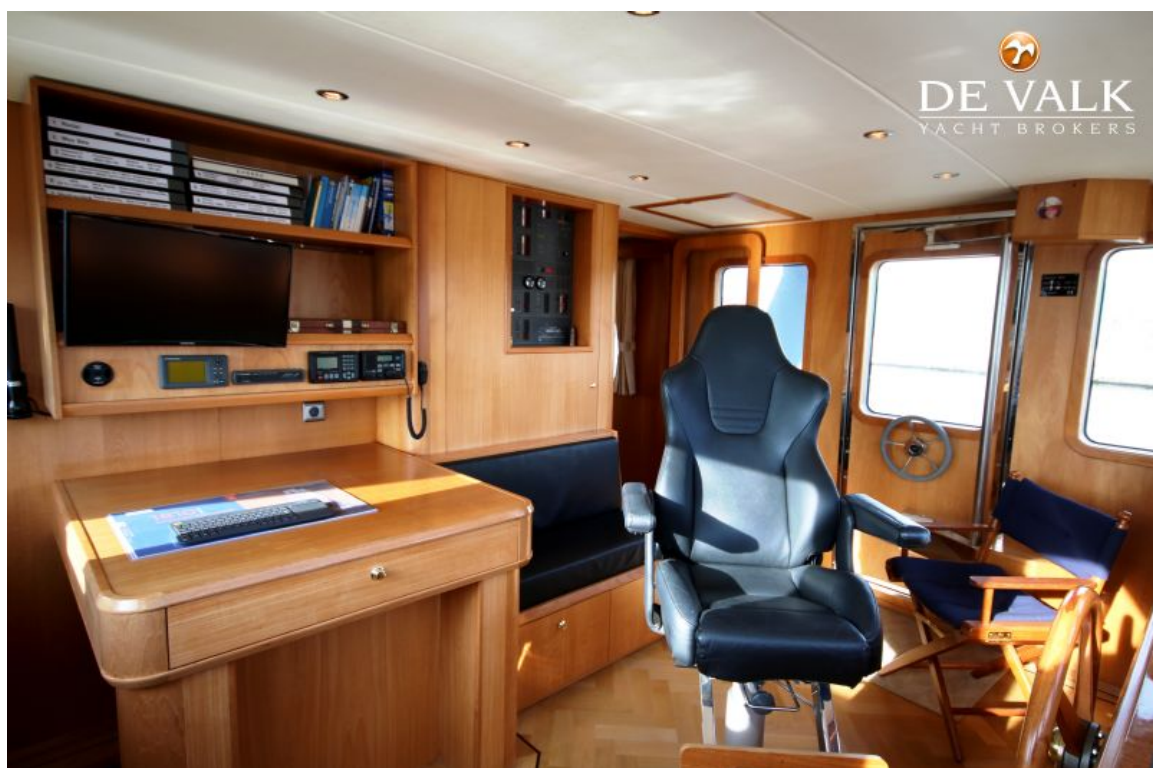
ALMARINE MY 18.50



ALMARINE MY 18.50

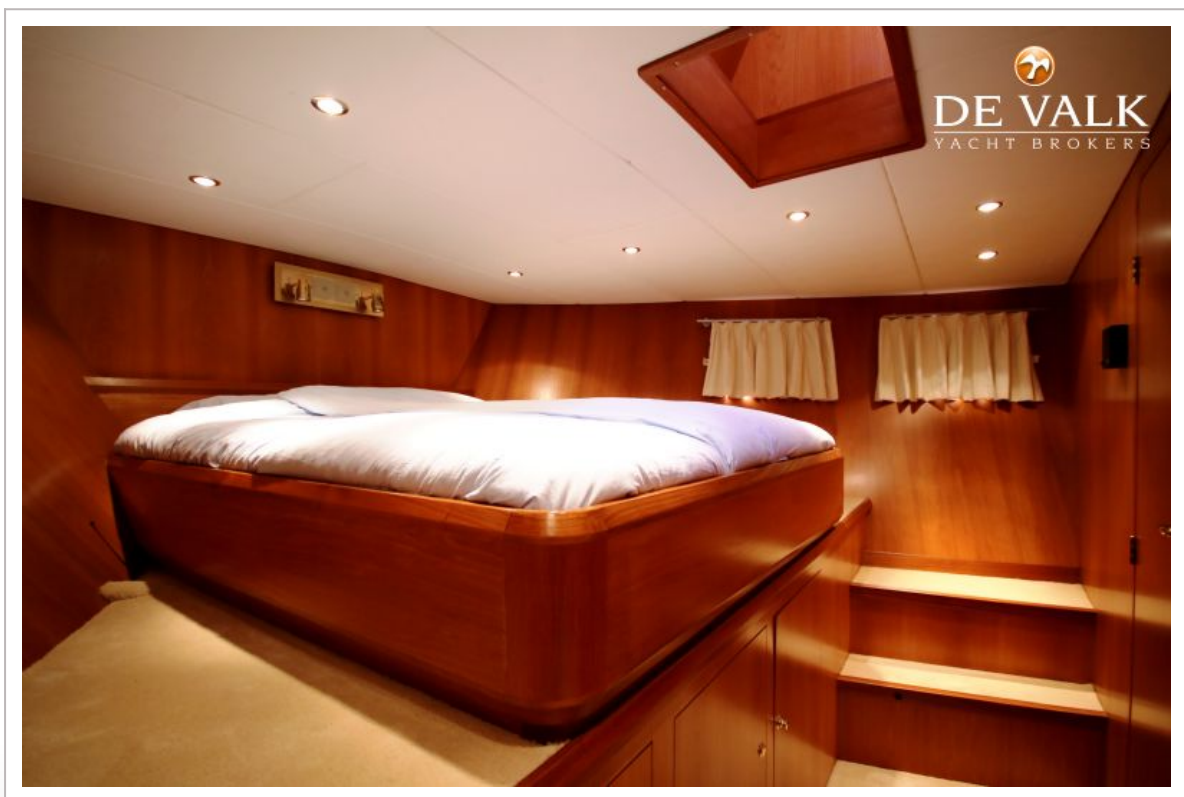
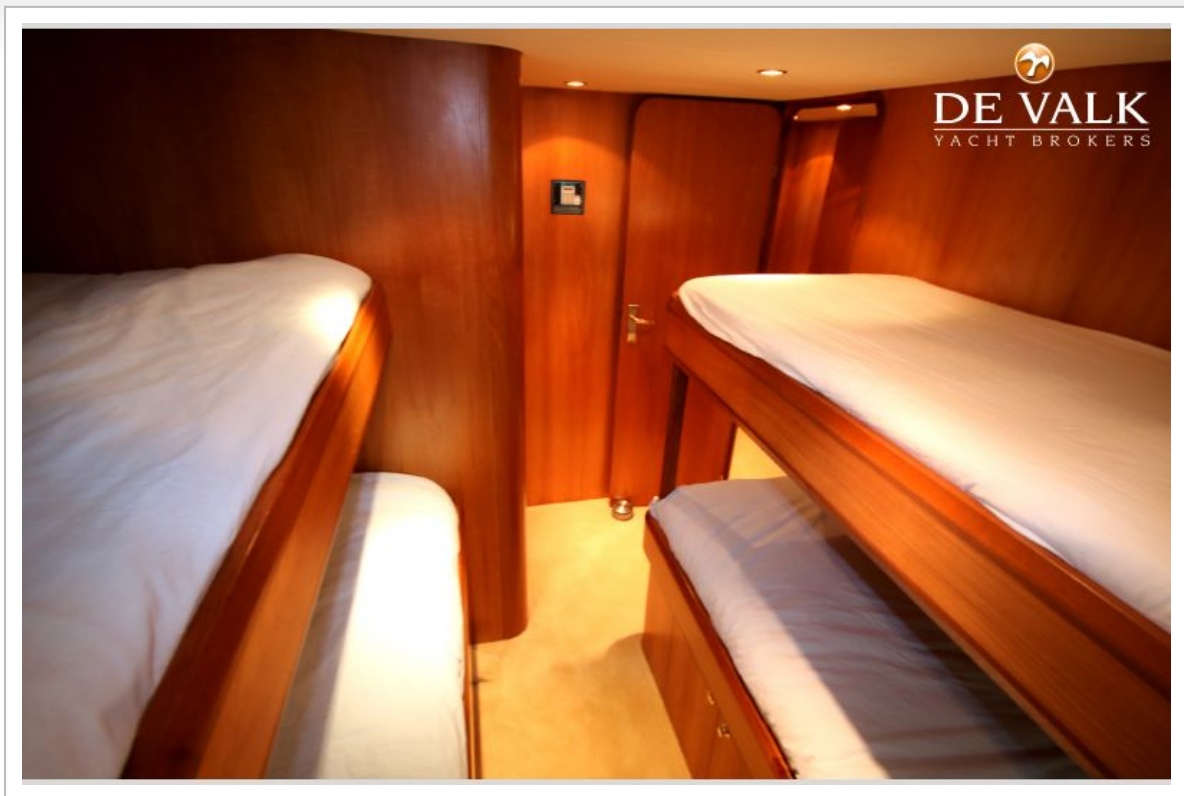


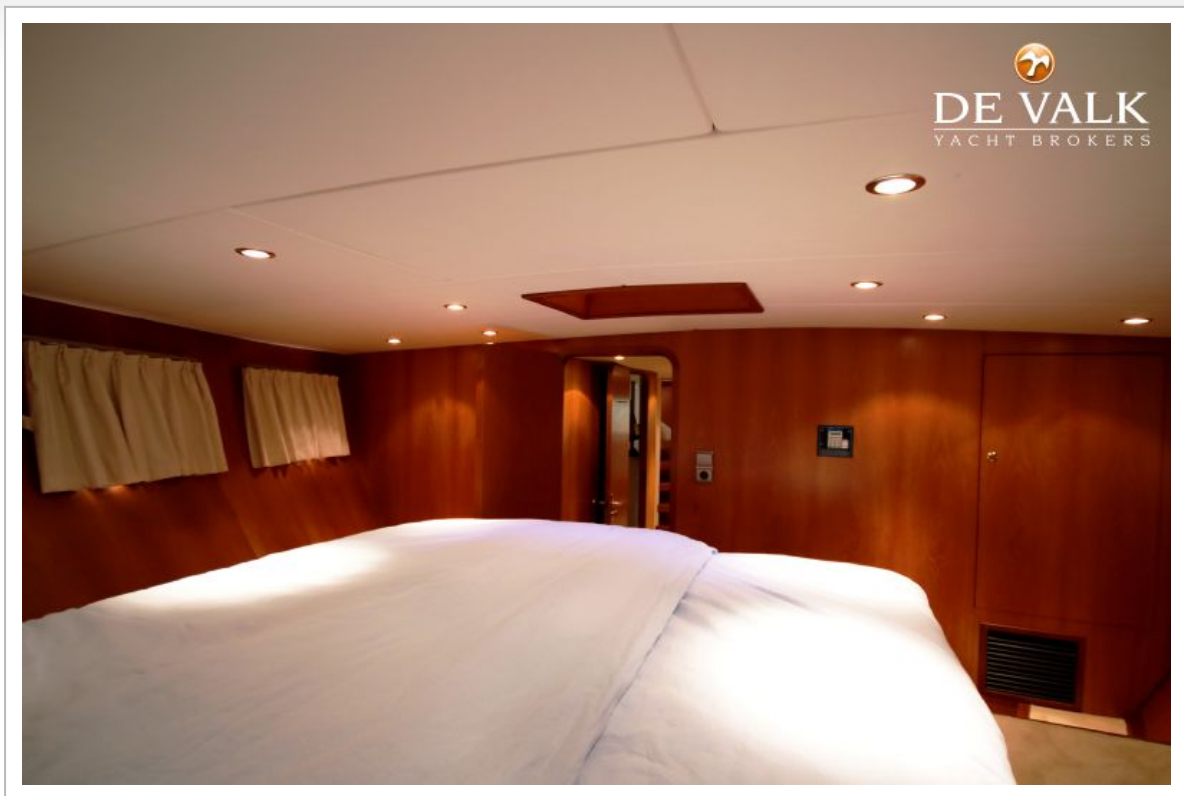
ALMARINE MY 18.50

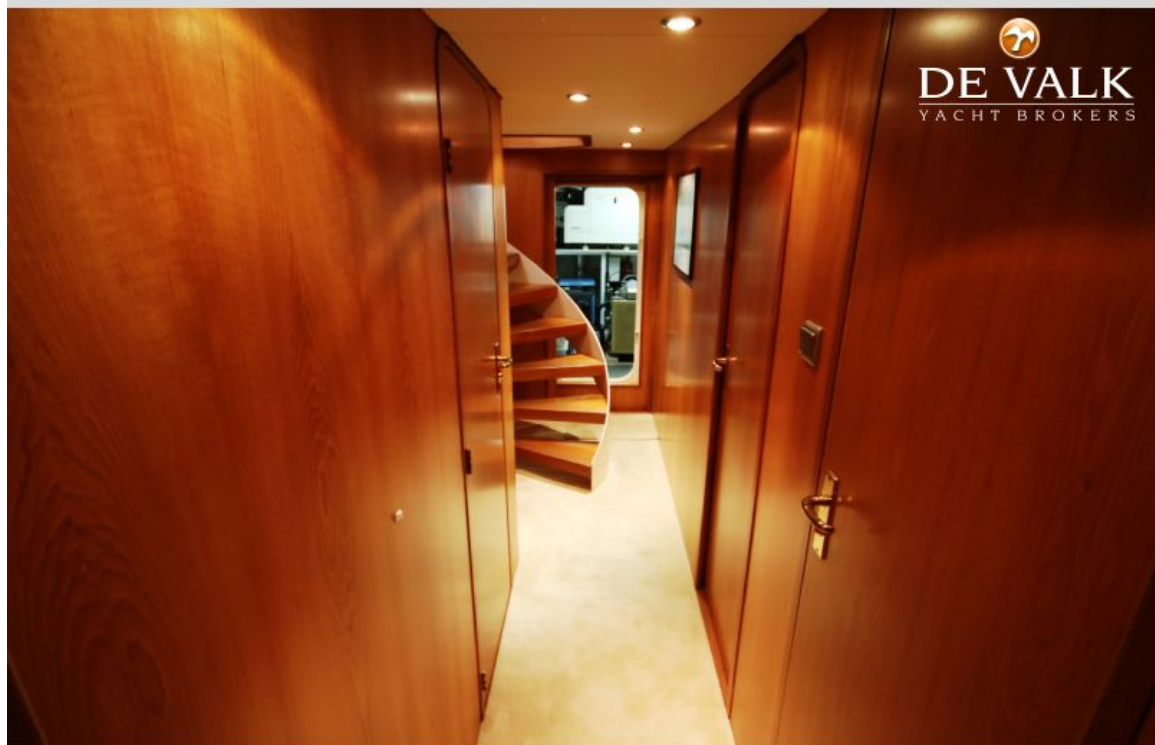


ALMARINE MY 18.50









ALMARINE MY 18.50



ALMARINE MY 18.50





ALMARINE MY 18.50



