



DE VALK
YACHT BROKERS



BAVARIA 40



DE VALK
YACHT BROKERS

BROKERAGE | CHARTER | BERTHS | FINANCE | INSURANCE | YACHT MANAGEMENT

BROKER'S COMMENTS

The Bavaria 40 offers a lot of yacht for the money. Three cabins, two bathrooms and a spacious saloon and cockpit. It has just been freshly antifouled, cleaned, polished and waxed and comes equipped with useful options such as Esthec artificial teak decking and a bow thruster. If you are looking for a an ideal family cruising yacht in a limited budget then look no further than this Bavaria 40.

Nick Lanting

SPECIFICATIONS

Dimensions	12.48 x 3.99 x 1.95 (m)	Builder	Bavaria Yachtbau GmbH
Built	2000	Cabins	3
Material	GRP	Berths	7
Engine(s)	1 x Volvo Penta MD22L BT diesel	Hp/Kw	40.00 (hp), 29.40 (kw)
Asking price	sold (VAT)	Lying	at sales office

CONTACT

Sales office	De Valk Sint Annaland B.V.	Telephone	+31 (0)166 601 000
Address	Koelhuisweg 4 4697 RM Sint Annaland NL	E-mail	sintannaland@devalk.nl

DISCLAIMER

These particulars are given in good faith as supplied but cannot be guaranteed.



GENERAL

Model	BAVARIA 40
Type	sailing yacht
LOA (m)	12,48
LWL (m)	10,95
Beam (m)	3,99
Draft (m)	1,95
Air draft (m)	17,05
Headroom (m)	1,99
Year built	2000
Launched	2001
Builder	Bavaria Yachtbau GmbH
Country	Germany
Designer	J & J Design
Displacement (t)	7,9
Ballast (tonnes)	cast iron 2,85
CE norm	A
Hull material	GRP
Hull colour	white
Hull shape	round-bilged
Keel type	fin keel
Superstructure material	GRP
Rubbing strake	stainless steel + teak
Deck material	GRP
Deck finish	synthetic teak Esthec (2015)
Superstructure deck finish	non-skid moulded in
Cockpit deck finish	synthetic teak Esthec (2015)
Antifouling (year)	2018
Dorades	1 x
Window frame	aluminium
Window material	perspex



Deckhatch	8 x
Portholes	yes
Fuel tank (litre)	polyethylene 150
Freshwater tank (litre)	polyethylene 2 x 150
Blackwater tank (litre)	polyethylene
Blackwater tank extraction	deck extraction + uw line
Wheel steering	cable steering
Outside helm position	cable steering
Emergency tiller	yes

ACCOMMODATION

Cabins	3
Berths	7
Interior	mahogany
Floor	teak and holly
Open cockpit	yes
Saloon	yes
Headroom saloon (m)	1,99
Heating	Webasto
Navigation center	yes
Chart table	yes
Aft Cabin	2 x
Dinette	yes
Galley	yes
Countertop	plastic
Sink	stainless steel 2 x
Cooker	calor gas
Oven	yes
Fridge	toploading Waeco
Hot water system	220V + engine
Water pressure system	electrical



Owners cabin	double bed
Bed length (m)	2,05 x 1,60
Wardrobe	hanging and shelves
Bathroom	en suite
Toilet	en suite
Toilet system	manual Jabsco
Wash basin	in the bathroom
Shower	en suite
Extra info	headroom 1,88 m
Guest cabin 1	double bed Portside
Bed length (m)	2,05 x 1,30
Wardrobe	hanging and shelves
Bathroom	shared
Toilet	shared
Toilet system	manual Jabsco
Wash basin	in the bathroom
Shower	shared
Extra info	headroom 1,97 m
Guest cabin 2	double bed Starboard
Bed length (m)	2,05 x 1,30
Wardrobe	hanging and shelves
Extra info	headroom 1,97 m

MACHINERY

No of engines	1
Make	Volvo Penta
Type	MD22L BT
HP	40,00
kW	29,40
Fuel	diesel
Year installed	2000



Maximum speed (kn)	8
Cruising speed (kn)	7
Consumption (l/hr)	3
Engine cooling system	freshwater heat exchanger
Drive	sail-drive
Saildrive seal	(2000)
Engine controls	bowden cable
Gearbox	mechanical
Bowthruster	electric Max-Power
Exhaust	watercooled
Propeller type	folding
Propeller blades	3
Manual bilge pump	1 x (cockpit)
Electrical installation	12V / 220V
Batteries	3 x
Start battery	1 x 105 Ah
Service battery	2 x 105 Ah
Battery charger	Victron Centaur 12V/20A
Diode battery combiners	yes
Shorepower	with cable Forward & aft

NAVIGATION

Compass	Suunto (defect)
Electric compass	In autopilot
Depth sounder/log	Raytheon TriData
Windset	Raytheon ST60
VHF	Shipmate RS8300
Autopilot	Raytheon ST6002
Radar/GPS/plotter	Raytheon RL70C
Navtex	(function unknown) Lo-Kata Navtex1
Navigation lights	yes



EQUIPMENT

Sprayhood with grab rail	2013
Cockpit cover	2013
Bimini	yes
Cockpit table	Teak
Bathing platform	yes
Boarding ladder	stainless steel
Transom door	yes
Deck shower	hot + cold
Anchor	CQR Plough
Anchor chain	yes
Windlass	electrical Lofrans 1000W
Deck wash	hot + cold
Sea railing	wire
Grab rail (superstructure)	stainless steel
Pushpit	yes
Pulpit	yes
Life raft	SeaGo RAFT-G-4
Life raft (pers)	4
Last life raft survey	08/2015
Lifejackets	yes
Fenders	yes
Mooring lines	yes
TV	Oppo 49 cm
Radio-cd player	Kenwood KDC-2024S
DVD player	In TV
Cockpit speakers	yes
Speakers in salon	yes
Fire extinguisher	2 x 2 kg
Latest extinguisher survey	unknown



RIGGING

Rigging	fractional
Standing rigging	wire
Brand mast	Seldén
Material mast	aluminium
Spreaders	2 x 2
Mainsail	Elvstrom (2015)
Stoway mast	yes
Genoa	2015
Genoa furler	Seldén Furlex 300S
Reefing System	main in-mast furling
Backstay adjuster	tackle
Boomvang	Seldén Rodkicker
Genoa sheetwinches	2 x Harken ST 44 2-speed
Spinnaker winch	1 x Harken ST
Multifunctional winches	halyard/sheet winches 2 x Harken ST 44 2-speed
Spi-pole	aluminium Seldén







BAVARIA 40



BAVARIA 40



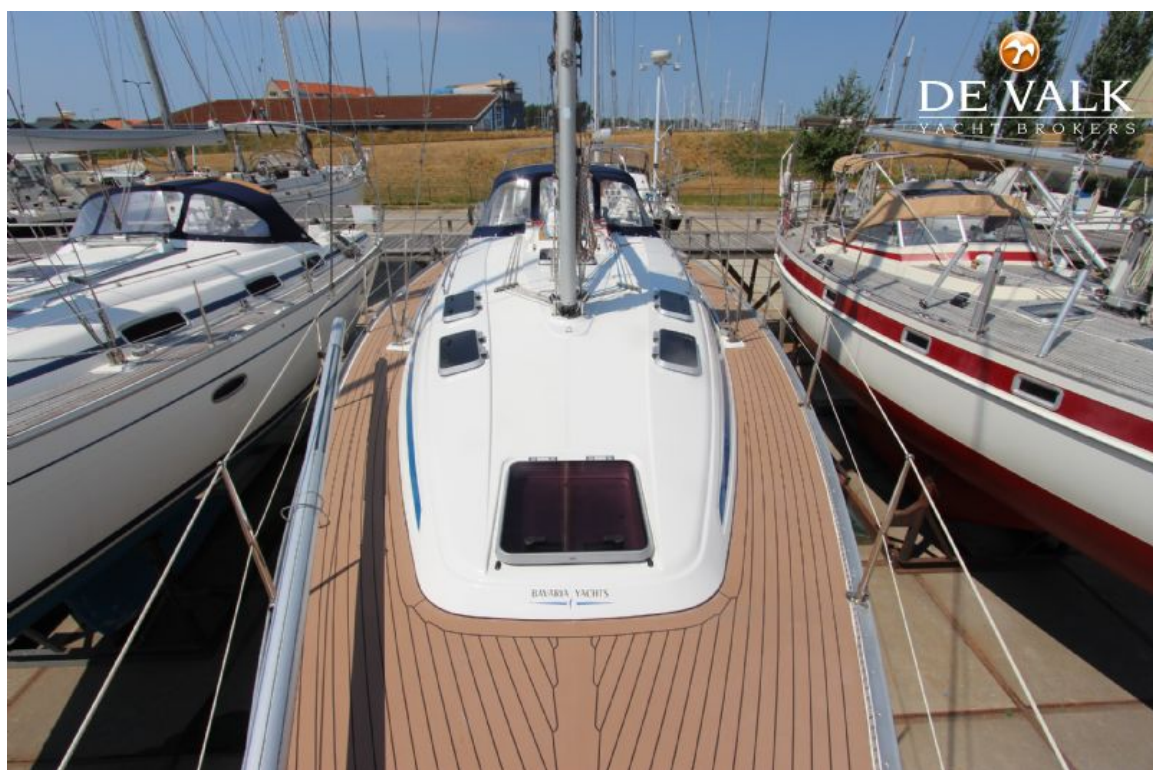
BAVARIA 40



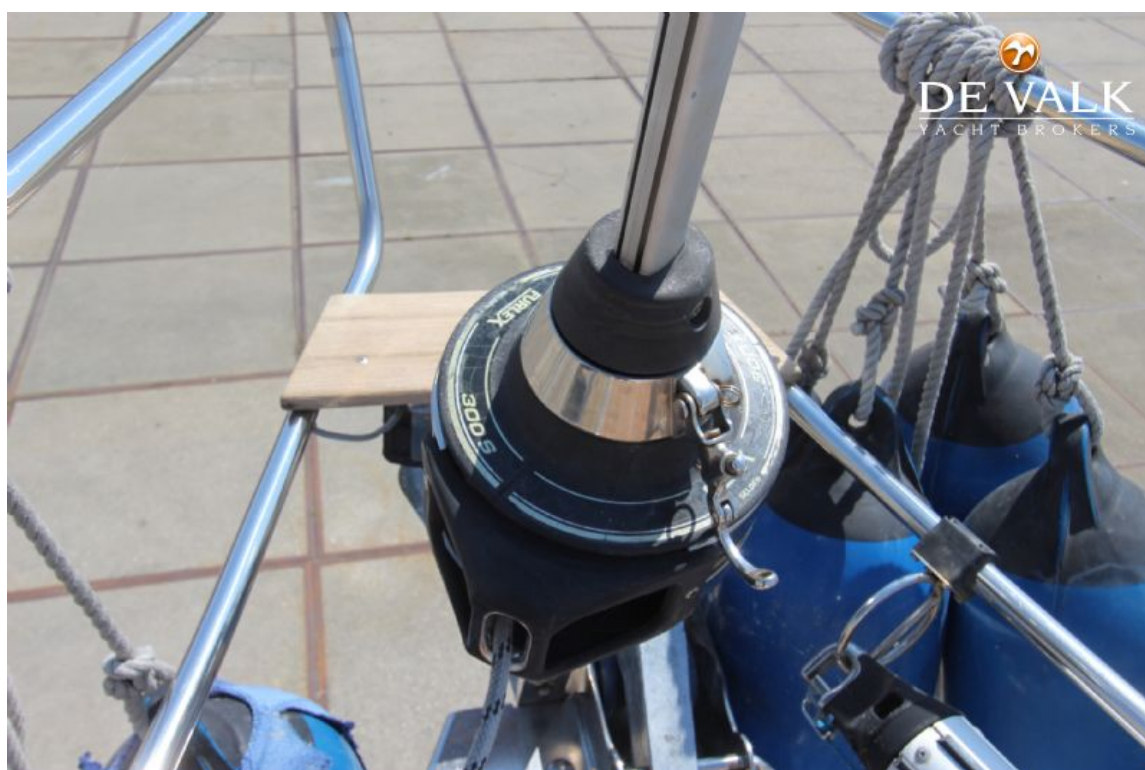
BAVARIA 40



BAVARIA 40



BAVARIA 40





BAVARIA 40



BAVARIA 40



BAVARIA 40



BAVARIA 40



BAVARIA 40



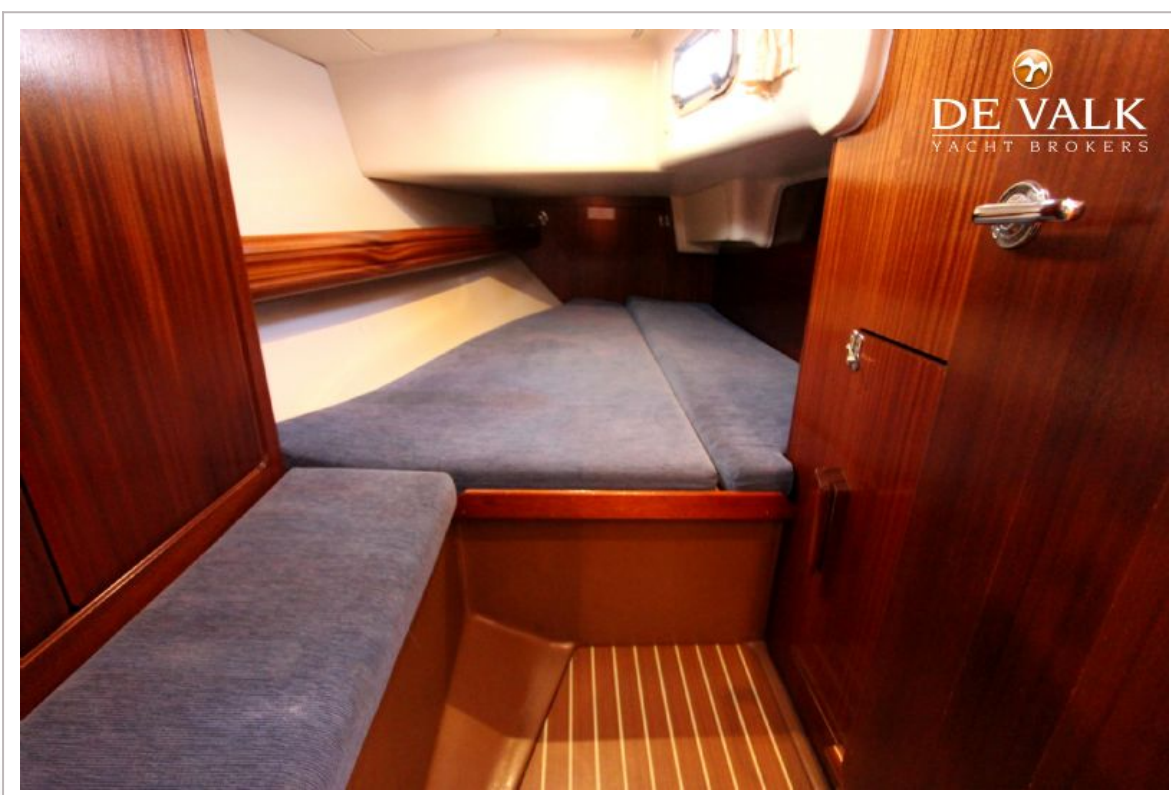
BAVARIA 40



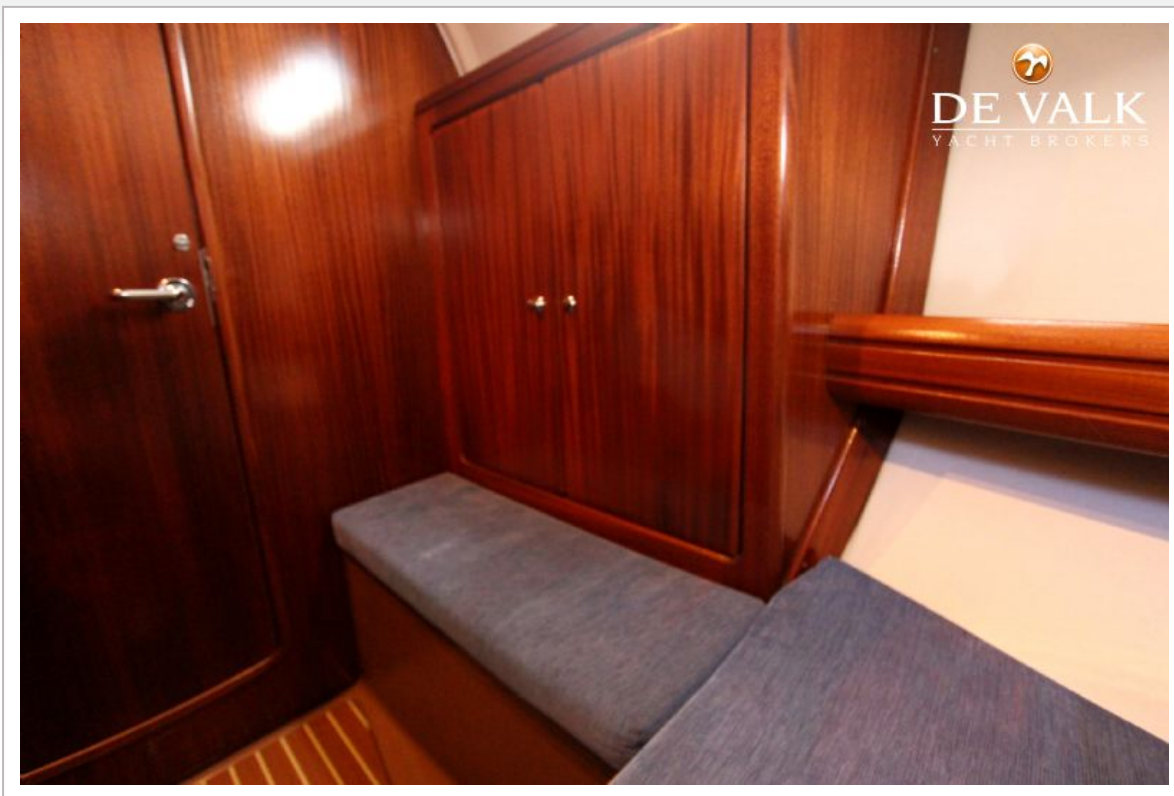
BAVARIA 40



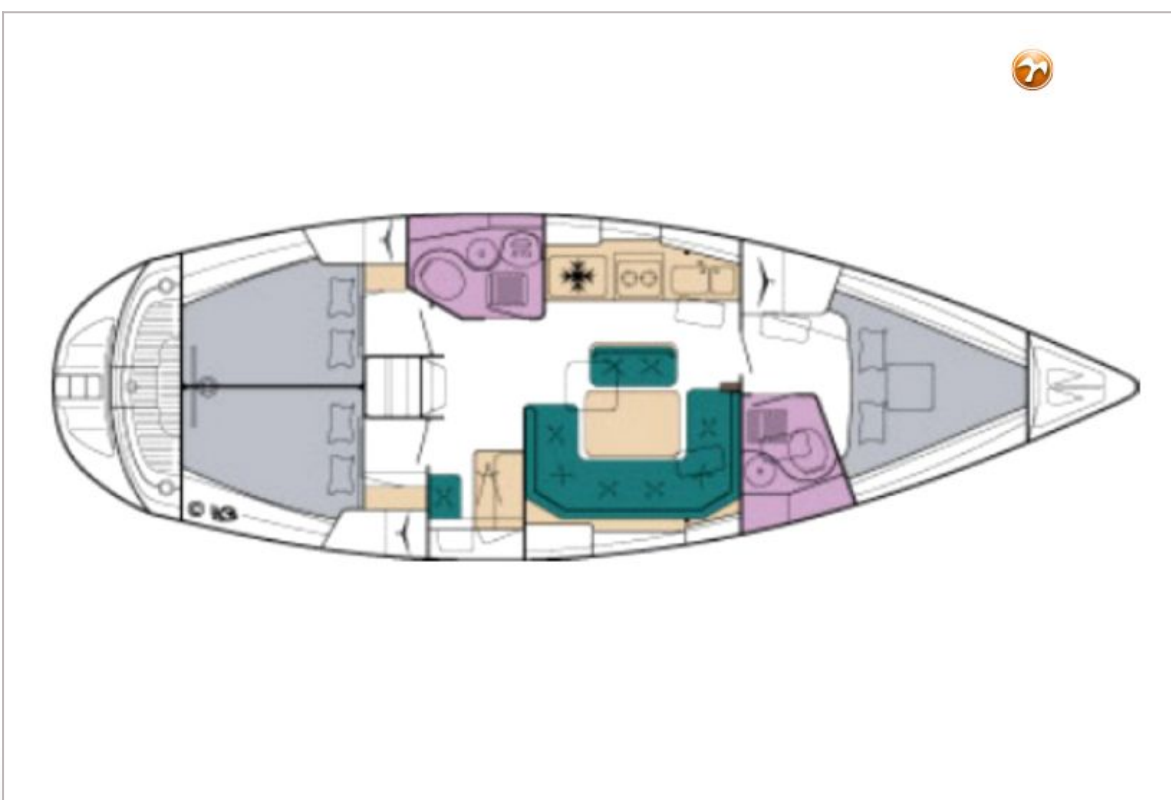
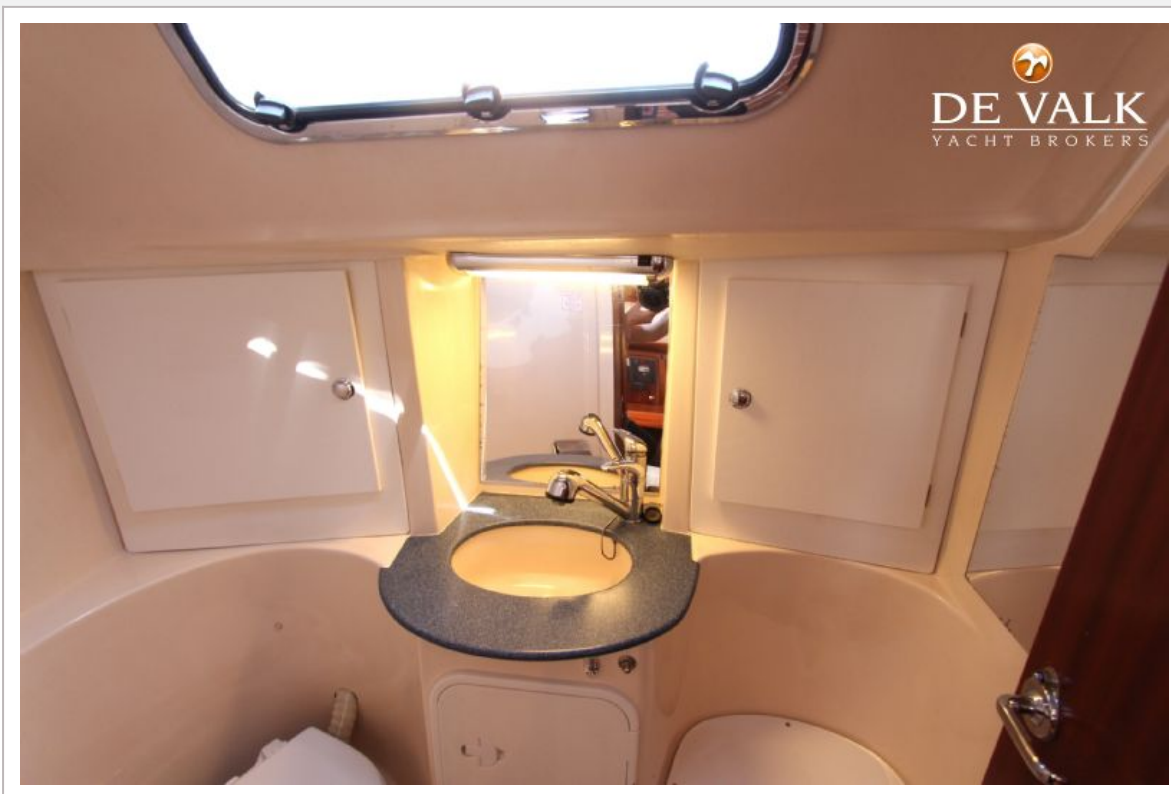
BAVARIA 40



BAVARIA 40



BAVARIA 40



BAVARIA 40

