



KOOPMANS 45 PILOTHOUSE

BROKER'S COMMENTS

The famous D. Koopmans Sr delivered a piece of art by drawing "Wende". A classic centerboard design with a lifting keel - 1.30/2.70 m - and cutter rig. As with all of his designs, this yacht excels in seaworthiness, cruising performance and safety. Very well thought interior layout what makes her perfect for longer sailing passages or live-a-board. She is equipped with an electric Genoa furler, diesel 9kVa diesel generator, recently overhauled diesel heating and toilet system and a Nanni 50 hp diesel engine, installed in 2001. Come over to our sales marina to inspect this magnificent Koopmans

Harald Padberg

SPECIFICATIONS

Dimensions	14.10 x 4.00 x 1,30 / 2.70 (m)	Builder	Kupedo Jachtbouw
Built	1986	Cabins	2
Material	Aluminium	Berths	8
Engine(s)	1 x Nanni 4.220 HE diesel	Hp/Kw	50.00 (hp), 36.00 (kw)
Asking price	sold (VAT)	Lying	at sales office

CONTACT

Sales office	De Valk Monnickendam B.V.	Telephone	+31 (0)299 65 63 50
Address	Hoogedijk 6 1145 PM Katwoude NL	E-mail	monnickendam@devalk.nl

DISCLAIMER

These particulars are given in good faith as supplied but cannot be guaranteed.



GENERAL

Model	KOOPMANS 45 PILOTHOUSE
Type	sailing yacht
LOA (m)	14,10
Beam (m)	4,00
Draft (m)	2,70
Draft min (m)	1,30
Air draft (m)	19,60
Headroom (m)	1,90
Year built	1986
Launched	1987
Builder	Kupedo Jachtbouw
Country	The Netherlands
Designer	D. Koopmans Sr.
Displacement (t)	16
Ballast (tonnes)	lead 7
CE norm	NA
Hull material	aluminium
Hull colour	Black / Dark Blue
Hull thickness (mm)	7 mm
Hull shape	S-bilged
Keel type	centreboard
Superstructure material	aluminium
Superstructure (mm)	5 mm
Rubbing strake	stainless steel
Deck material	aluminium
Deck finish	non-skid paint
Superstructure deck finish	synthetic teak
Cockpit deck finish	synthetic teak
Antifouling (year)	2018
Dorades	yes



KOOPMANS 45 PILOTHOUSE

Window frame	aluminium
Window material	perspex Green tinted
Deckhatch	3 X
Portholes	4 X
Radar arch	non collapsible
Fuel tank (litre)	stainless steel 250 L
Freshwater tank (litre)	stainless steel 250 L
Blackwater tank (litre)	70 L
Inside helm position	cable steering - is disconnected but can be connected easily within 10 minutes
Outside helm position	cable steering
Emergency tiller	June 2012
More info on hull	International Intertuf antifouling 2018
More info on paintwork	Epifanes paint system is a mix of Black and Dark Blue
Extra info	Superstructure windows are Green tinted
Extra info	at Starboard side is an extra 200L tank which has never been used, so can be used for either water or diesel.
Extra info	daggerboard case extra isolated

ACCOMMODATION

Cabins	2
Berths	8
Interior	teak
Floor	teak and holly
Pilot house/deck saloon	with steering position and 2 bench seats + one pilot berth underneath
Saloon	yes
Headroom saloon (m)	1,90 m
Heating	central heating Diesel
Heating 2	Truma 2014 - needs to be serviced.
Chart table	yes
Galley	U-shaped



KOOPMANS 45 PILOTHOUSE

Countertop	wood
Sink	stainless steel
Cooker	calor gas Force 10
Oven	Force 10
Fridge	Isotherm
Freezer	Isotherm
Hot water system	220V + engine Allpa boiler - 2006
Water pressure system	electrical
Owners cabin	double bed + single bed
Bed length (m)	yes
Wardrobe	hanging/drawers/shelves
Guest cabin 1	v-bed
Wardrobe	hanging and shelves
Extra info	Pilot berth at starboard side
Bathroom	shared
Toilet	shared
Toilet system	manual
Wash basin	in the bathroom
Shower	shared
Extra info	the floor is covered with isolation and carpet. Underneath you will find the original teak and holly. Carpet and isolation are not glued.
Extra info	diesel heating system is completely overhauled in 2017. New stainless steel exhaust pipe, new water separator and filter system added. 4 radiators throughout the ship. Front cabin is heated by the exhaust pipe.
Extra info	toilet system, incl. hoses is completely overhauled in the summer of 2017. Overboard valve can be switched to blackwater tank.
Extra info	Owners cabin bed size. Portside : 1,92 L X 1,30 W Starboard : 2,04 L X 0,75 W Middle : 0,75 L X 2,70 W
Extra info	Guest cabin bed size: 2,05 L X 1,85 W Pilot berth: 2,09 L X 0,50 W



MACHINERY

No of engines	1
Make	Nanni
Type	4.220 HE
HP	50
kW	36,00
Fuel	diesel
Year installed	2001
Engine hours	1606
Engine cooling system	freshwater heat exchanger
Drive	shaft
Gearbox	Velvet Drive hydraulic - overhauled in 2009
Propeller type	fixed
Propeller blades	3
Propeller shaft material	stainless steel 2012 -
Shaft lubrication	water
Generator	Mitsubishi 9kVa
Start battery	2016
Service battery	2 X 200Ah
Generator battery	1 X
Windlass battery	1 X 24V
Battery monitor	Victron BVM-501
Battery charger	Victron 60A - june 2016 + Mastervolt (24V)
Shorepower	with cable
Insulation transformer	Victron 3600W - 2006
Extra info	5,5 KN / 1.800 RPM - approx. 3L per hour. Engine is serviced in 2018.

NAVIGATION

Compass	Autonatic + Plastimo Mini Contest
Depth sounder	Autohelm



Log	Autohelm ST50
Windset	Autohelm ST50
VHF	Shipmate RS8300 + Atis
Autopilot	Raymarine hydraulic + SPX-30 course computer - 2011
Wind vane steering install.	Autohelm Maxview - 2008
Radar	Raymarine digital - 2011
GPS	Furuno - 2007
Plotter	Raymarine C90W - 2011
Personal computer	Shipton + monitor

EQUIPMENT

Cockpit table	yes
Boarding ladder	stainless steel
Anchor	CQR Plough
Anchor chain	50M
Anchor 2	Fortress
Windlass	electrical Maxwell Nilsson 24V
Capstan	yes
Sea railing	stainless steel
Pushpit	stainless steel
Pulpit	stainless steel
Fenders	yes
Mooring lines	yes
TV	2014
TV receiver	Glowmex digitenne
Radio-cd player	+ aux
DVD player	2014
iPod connection	yes
Speakers in salon	JBL
Clock - barometer	Schatz



RIGGING

Rigging	cutter
Standing rigging	wire
Brand mast	Sparcraft
Material mast	aluminium
Spreaders	2 sets
Mainsail	De Vries (2002)
Mainsail cover	yes
Fully battened mainsail	yes
Cutterstay	yes
Genoa	yes
Genoa furler	electric 24V Furlex 300E
Cutter furler	Furlex 300S
Spinnaker	yes
Yankee	yes
Reefing System	quick-one-line-reefing Dutchman lazy bag
Backstay adjuster	mechanical
Boomvang	mechanical and tackle
Genoa sheetwinches	2X Meisner ST30 Two Speed
Halyard winches	2X Meisner ST28 Two Speed
Spi-pole	aluminium
Jockey-pole	aluminium
Extra info	more winches: 3 X Meisner 27 Two-Speed on deck
Extra info	1 X Anderson 27ST Two-Speed on deck, 1 X Meisner 21 on the mast. Complete rig is renewed in 2006. All sails are checked by a sailmaker in 2017. Electr. Genoa furler to operate at steering pedestal.



KOOPMANS 45 PILOTHOUSE



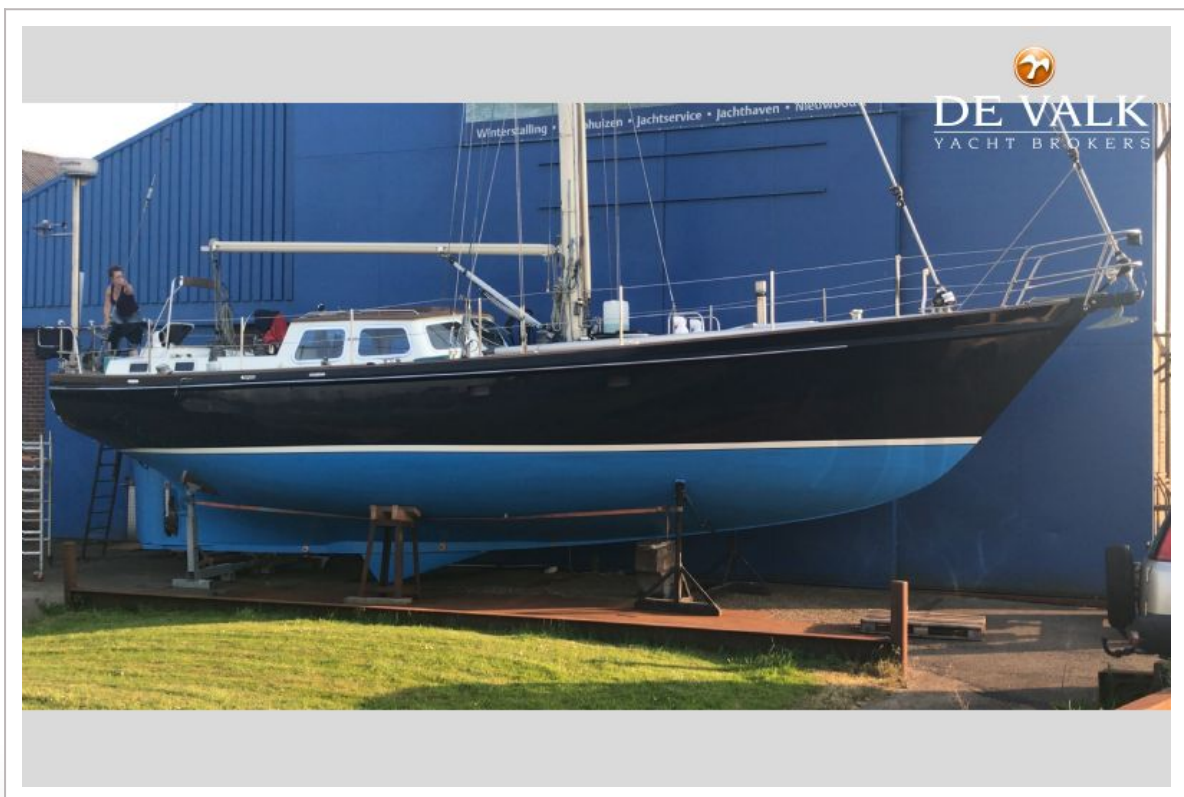
KOOPMANS 45 PILOTHOUSE



KOOPMANS 45 PILOTHOUSE



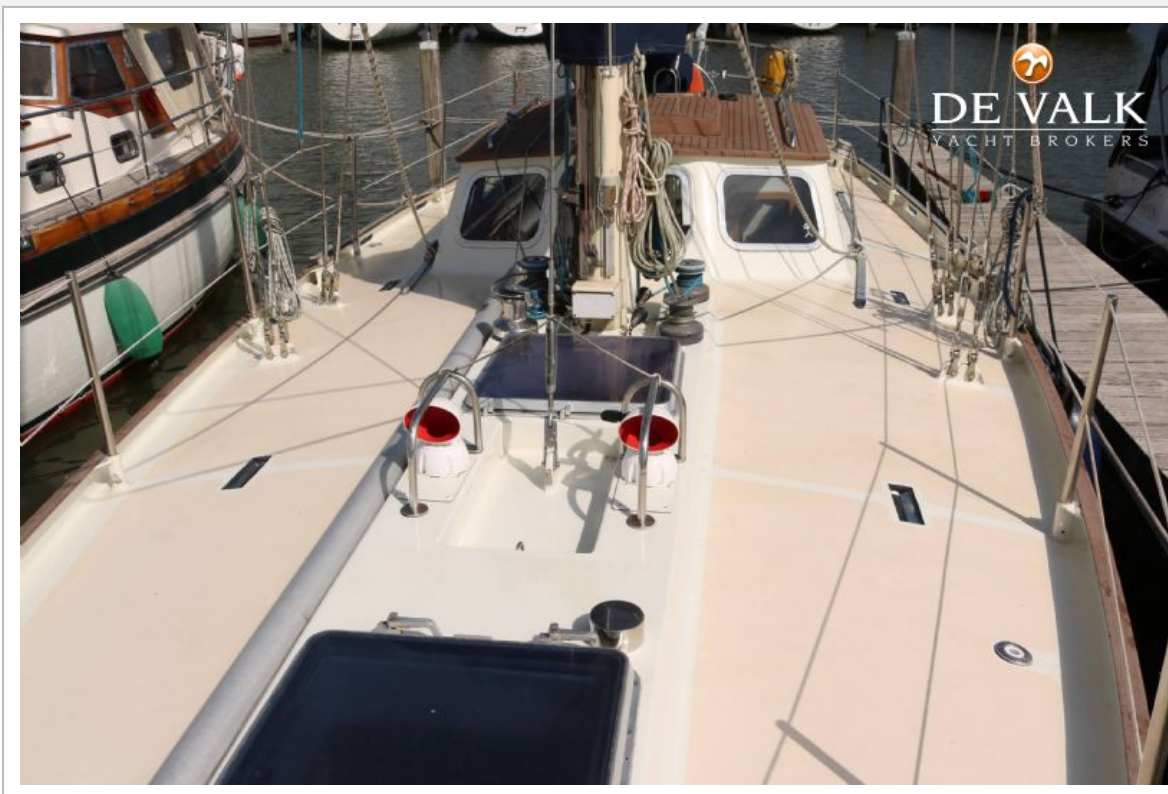
KOOPMANS 45 PILOTHOUSE



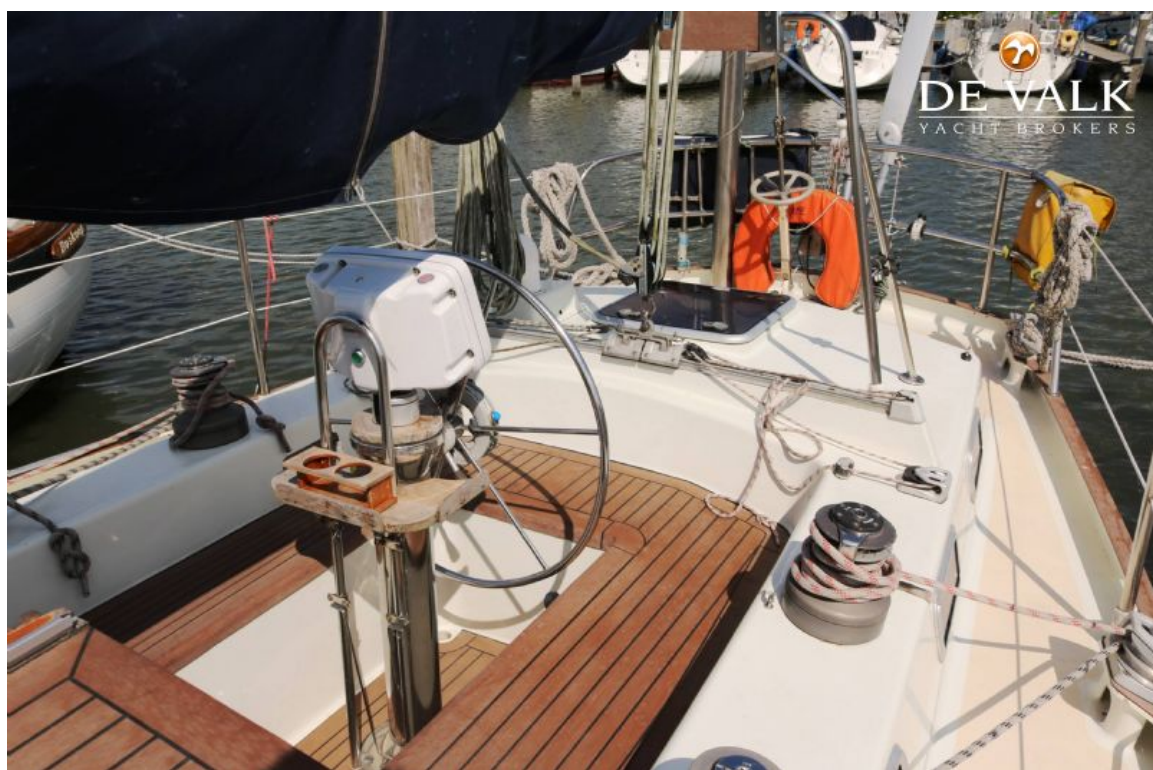
KOOPMANS 45 PILOTHOUSE



KOOPMANS 45 PILOTHOUSE



KOOPMANS 45 PILOTHOUSE



KOOPMANS 45 PILOTHOUSE



KOOPMANS 45 PILOTHOUSE



KOOPMANS 45 PILOTHOUSE



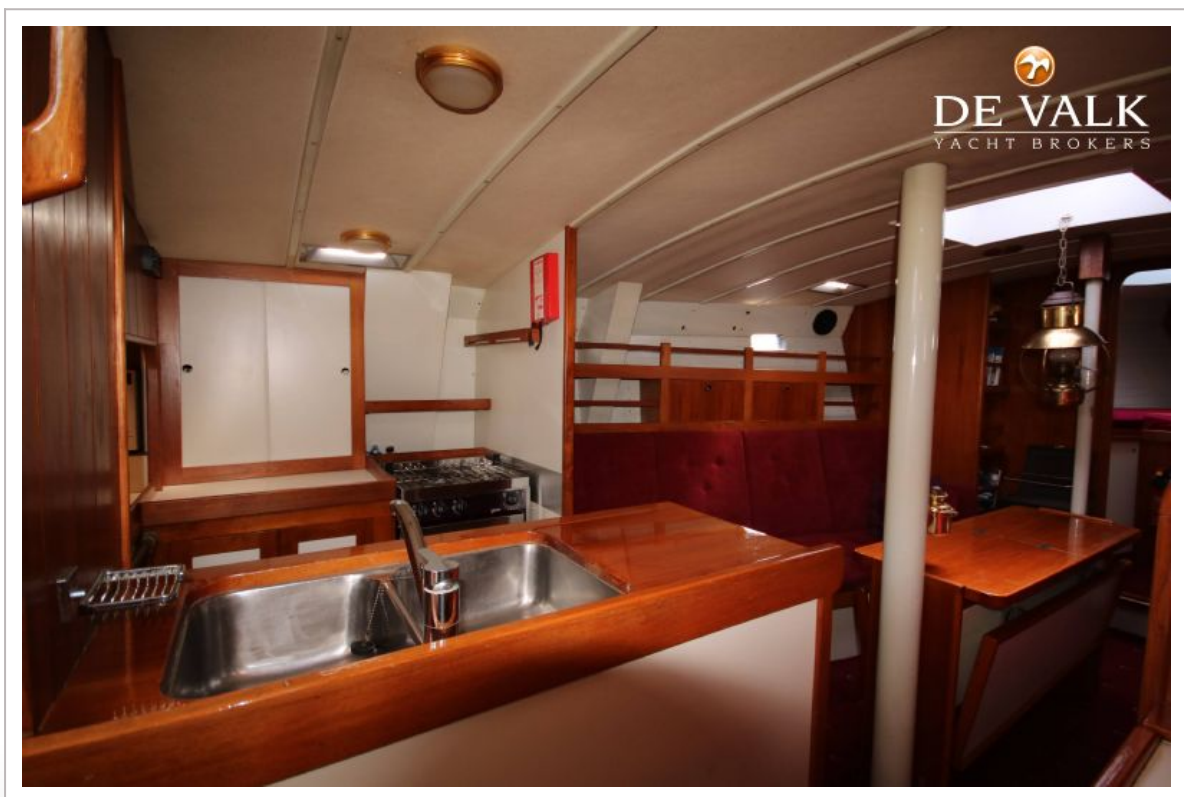
KOOPMANS 45 PILOTHOUSE



KOOPMANS 45 PILOTHOUSE



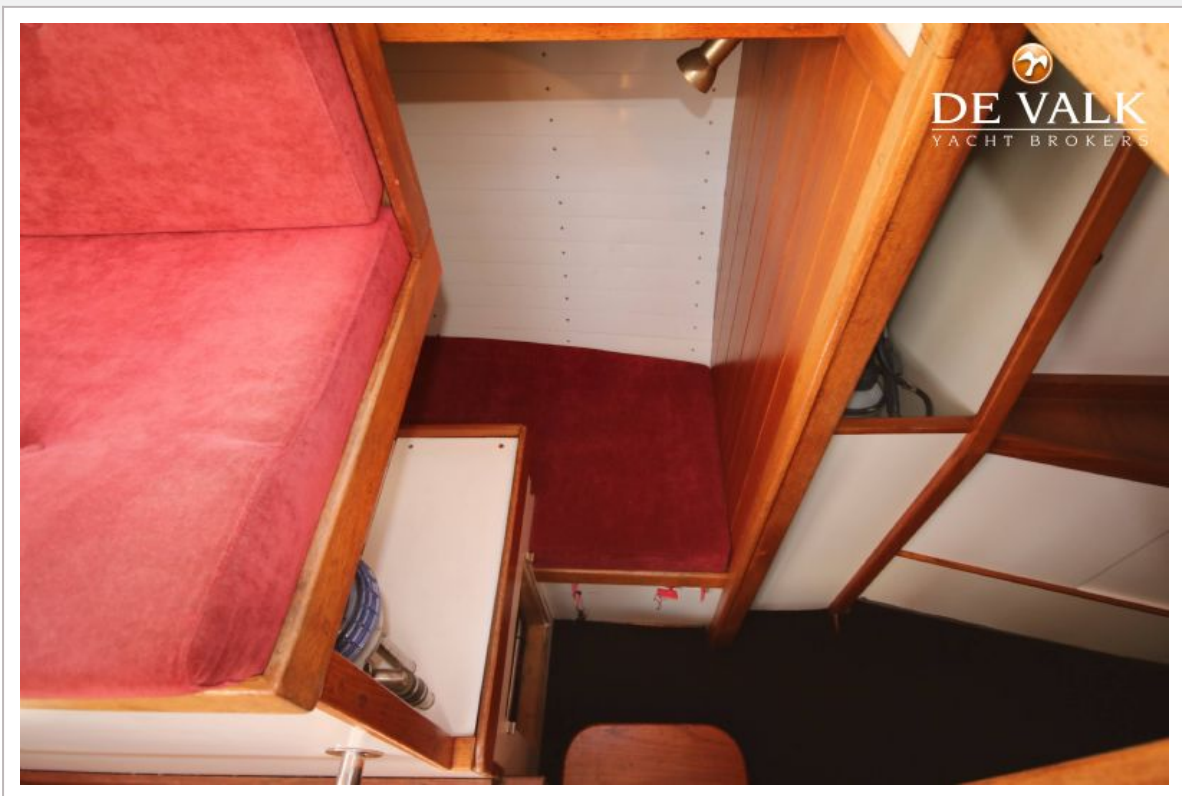
KOOPMANS 45 PILOTHOUSE



KOOPMANS 45 PILOTHOUSE



KOOPMANS 45 PILOTHOUSE



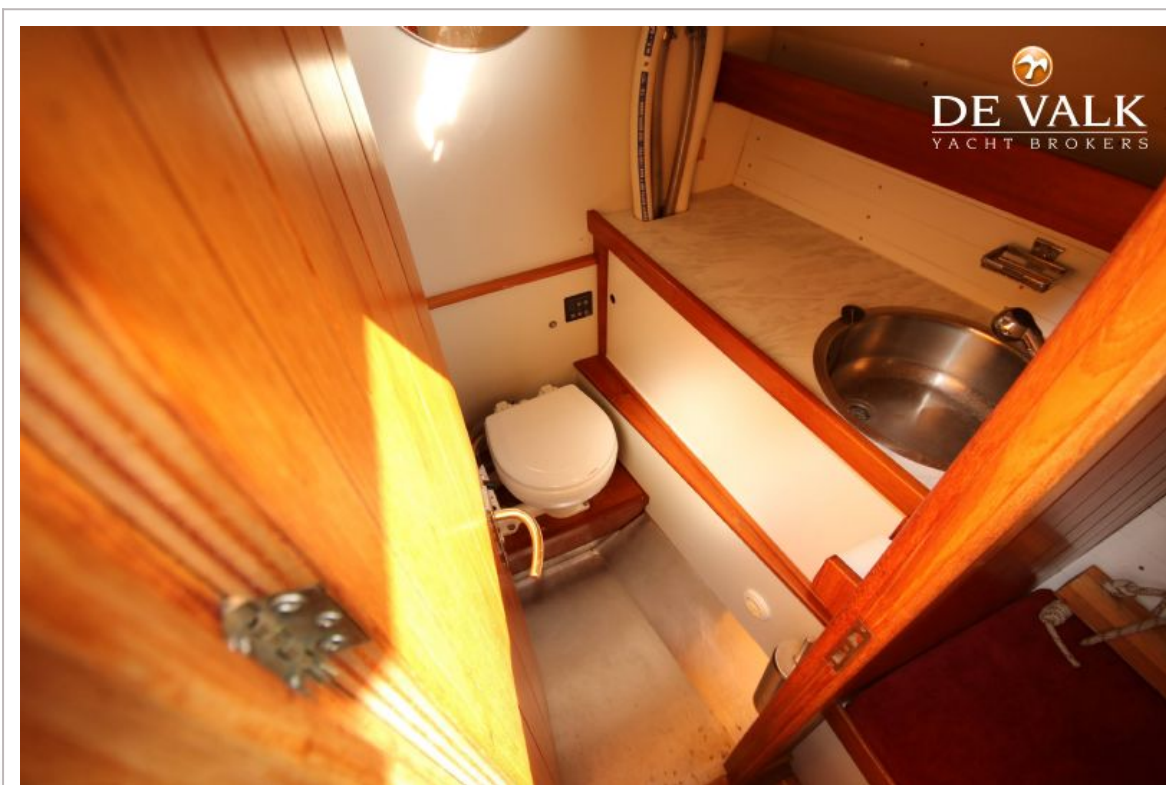
KOOPMANS 45 PILOTHOUSE



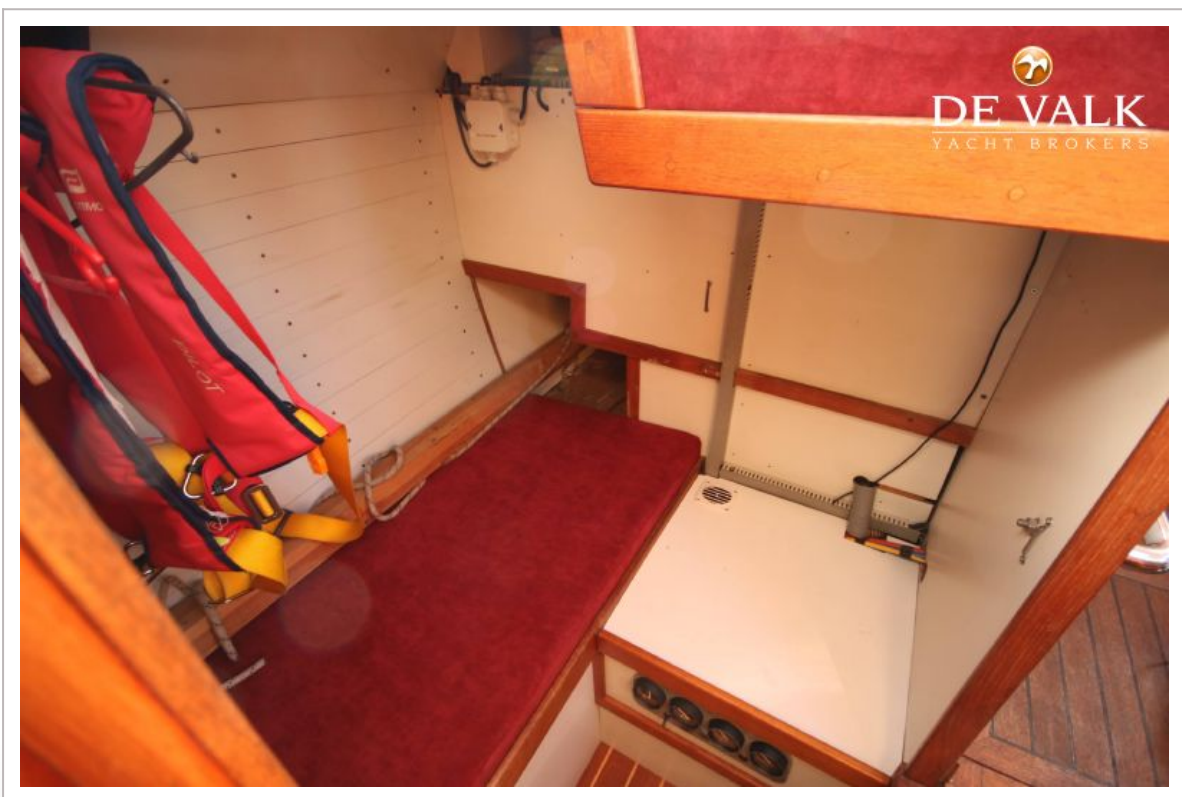
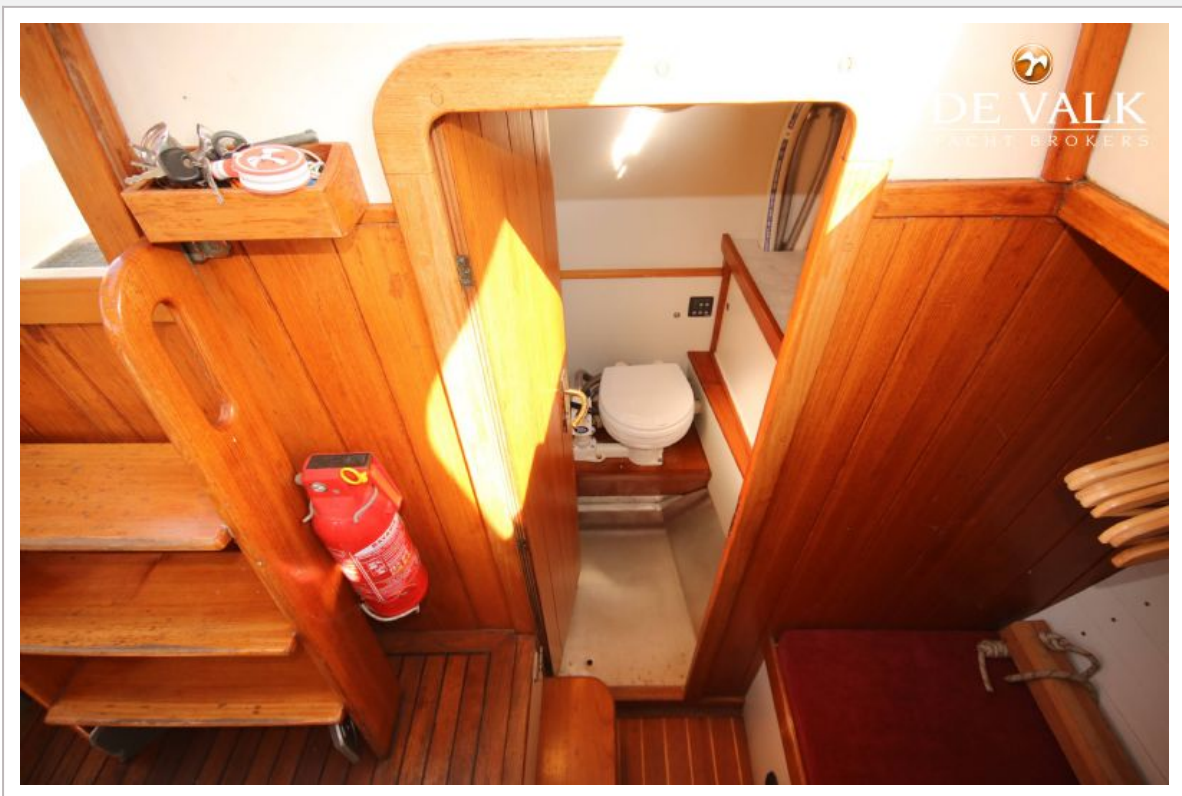
KOOPMANS 45 PILOTHOUSE



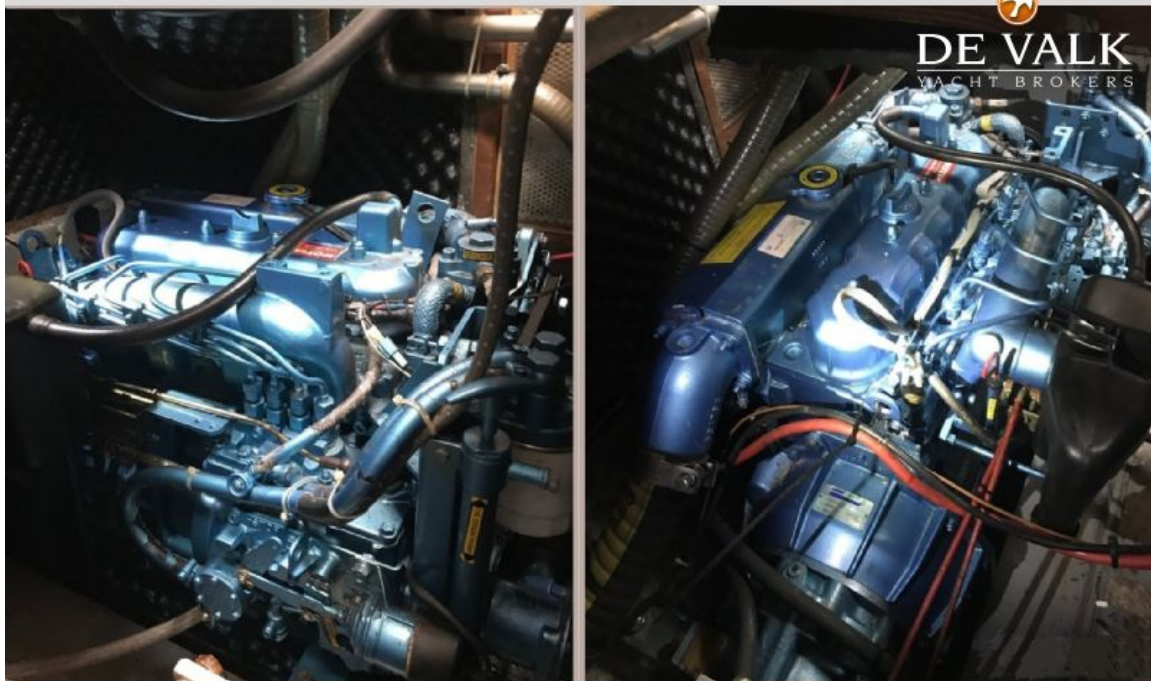
KOOPMANS 45 PILOTHOUSE



KOOPMANS 45 PILOTHOUSE



KOOPMANS 45 PILOTHOUSE



KOOPMANS 45 PILOTHOUSE

