



## SWEDEN YACHTS 45



## BROKER'S COMMENTS

When Quality, Space and Performance are your demands, look no further, the Sweden 45 is the answer to it all. When dreams turn in to yachts, this well maintained yacht reaches high standards in its sailing qualities and its living accommodation. These details, from the shape of the hull to the design, create a yacht that is elsewhere unmatched for serious sailing as well as for comfortable cruising. This yacht is based in Malta and can be viewed by appointment. We are available 7 days a week for more information.

*Reinier van der Wolf*

## SPECIFICATIONS

<b>Dimensions</b>	14.15 x 4.18 x 1.98 (m)	<b>Builder</b>	Sweden Yachts, Henan
<b>Built</b>	2002	<b>Cabins</b>	3
<b>Material</b>	GRP	<b>Berths</b>	6
<b>Engine(s)</b>	1 x Volvo Penta D2-75 diesel	<b>Hp/Kw</b>	75.00 (hp), 55.20 (kw)
<b>Asking price</b>	sold (VAT )	<b>Lying</b>	Malta

## CONTACT

<b>Sales office</b>	De Valk Monnickendam B.V.	<b>Telephone</b>	+31 (0)299 65 63 50
<b>Address</b>	Hoogedijk 6 1145 PM Katwoude NL	<b>E-mail</b>	monnickendam@devalk.nl

## DISCLAIMER

These particulars are given in good faith as supplied but cannot be guaranteed.



## GENERAL

Model	SWEDEN YACHTS 45
Type	sailing yacht
LOA (m)	14,15
LWL (m)	13,90
Beam (m)	4,18
Draft (m)	1,98
Headroom (m)	2,10
Year built	2002
Builder	Sweden Yachts, Henan
Country	Sweden
Designer	Peter Norlin - Jens Ostman
Displacement (t)	12,4
Ballast (tonnes)	lead 5.2
CE norm	A
Hull material	GRP
Hull colour	white
Hull shape	round-bilged - balsa core sandwich construction
Keel type	wing keel - with balanced rudder
Superstructure material	GRP
Deck material	GRP - end grain balsa core sandwich with moulded fibreglass
Deck finish	teak
Superstructure deck finish	teak
Cockpit deck finish	teak
Dorades	4x
Window frame	aluminium
Window material	perspex
Deckhatch	3x
Insulation	yes
Fuel tank (litre)	stainless steel - 2x 240 L
Freshwater tank (litre)	stainless steel - 2x 220 L



<b>Blackwater tank (litre)</b>	Forward Tektank 65l. (plastic) and Astern 55L (s/s)
<b>Wheel steering</b>	60' with rod linkage with cover
<b>Emergency tiller</b>	yes
<b>More info on hull</b>	solid laminate is used in high stress areas around keel, mast foot and in the joint between hull-halves. Bottom reinforcement are longitudinal and transversal solid laminate design. The hull and deck is bonded together using polyester filler
<b>Extra info</b>	rudders bearings new 2019
<b>Extra info</b>	all manuals and sea charts are included.

## ACCOMMODATION

<b>Cabins</b>	3
<b>Berths</b>	6
<b>Floor</b>	teak and holly
<b>Open cockpit</b>	yes
<b>Saloon</b>	Port side has 2 cupboards with book shelving. SB side has table between main bulkhead and nav. station with dedicated chart stowage, and there is 4 cupboards. Wine Storage under saloon table. - U-shaped
<b>Heating</b>	diesel ducted hot air - Eberspaecher Outlets: saloon,cabins and heads
<b>Aft Cabin</b>	2x
<b>Dinette</b>	Dinette arrangement with table on port side with one loose director's chair.
<b>Galley</b>	Drawer section, cutting board, dry food locker. Double overhead cupboards.
<b>Countertop</b>	corian
<b>Sink</b>	stainless steel - double. Waste bin and storage below sink.
<b>Cooker</b>	calor gas - GN-Espace Levante (2023) 3 with 2 gas bottles storage cockpit
<b>Extractor</b>	with overhead cooker light
<b>Microwave</b>	Bosch
<b>Fridge</b>	24v water cooled - 80l



Freezer	in GRP with plexiglass dividers between fridge and freeze area, drained to a separate sump. 24v water cooled. - 160l
Wine cooler	No cooler, just wine storage under saloon table.
Hot water system	220V + engine - 40 l.
Water pressure system	electrical
Manual and/or foot pump	fresh and salt
Crockery	yes
Owners cabin	double bed - Queen size with sprung mattress
Bed length (m)	2,10 m.
Wardrobe	hanging/drawers/shelves
Bathroom	en suite
Toilet	en suite
Toilet system	manual
Wash basin	in the bathroom
Shower	en suite - full standing space
Guest cabin 1	twin single
Bed length (m)	2,10 m.
Wardrobe	hanging - enclosed shelving
Bathroom	shared
Toilet	shared
Toilet system	manual
Wash basin	in the bathroom
Shower	shared
Guest cabin 2	twin single
Wardrobe	hanging and shelves
Extra info	interior and exterior LED lights. 2x Smoke/CO alarms

## MACHINERY

No of engines	1
Make	Volvo Penta
Type	D2-75



# SWEDEN YACHTS 45

HP	75
kW	55.20
Fuel	diesel
Year installed	2014
Maximum speed (kn)	8
Cruising speed (kn)	7
Consumption (l/hr)	4,5
Engine hours	Approx. 2000
Engine cooling system	freshwater heat exchanger
Drive	sail-drive
Saildrive seal	replaced February 2021 - Volvo Penta S150
Engine controls	mechanical
Bowthruster	electric - Maxpower 125
Exhaust	watercooled
Propeller type	folding
Propeller blades	4 VP 20x14
Manual bilge pump	yes
Electric bilge pump	2x
Bilge alarm	yes
Electrical installation	domestic and service system. - 24v/12v
Generator	wet exhaust - Paguro 3.5 kw
Batteries	7x
Start battery	1x 12v Mastervolt gel
Service battery	4x Mastervolt 200 Ah Gel
Generator battery	1 x 12V
Bowthruster battery	2x 12v
Battery charger/inverter	Mastervolt Mass
Solar panel	2x 145 W Solbian
Shorepower	with cable
Extra info	last engine service may 2023. Standard Volvo 12v alternator. 90amp 24v Alternator for domestic bank.



## NAVIGATION

Compass	Suunto
Depth sounder	Raymarine ST60
Log	at companionway - Raymarine ST60
Windset	at companionway - Raymarine ST60
Repeater	at nav station - Raymarine ST60 Multi
VHF	Shipmate RS 8400 DSC
VHF handheld	Simrad
Autopilot	Autohelm ST6000
Plotter	Raymarine Pathfinder
Radar/GPS/plotter	at helm and at nav station. - RL70C
Navtex	ICS Nav 6 navtex
AIS receiver	with WiFi relay - Simrad A150
EPIRB	yes
Personal MOB transmitter	yes

## EQUIPMENT

Sprayhood	yes
Cockpit cover	yes
Bimini	yes
Cockpit cushions	yes
Bathing platform	Electric operated fold down swim platform with remote control.
Boarding ladder	stainless steel
Deck shower	hot and cold
Anchor	15 kg Stern Anchor
Anchor 2	Fortress + Ultra s/s 27 kg bow Anchor
Anchor chain	70m 10mm galvanised chain with 30m rope + security stop
Windlass	electrical - Lewmar with remote
Deck wash	with hose
Dinghy	Honwave 2.3 m. 3 persons (2021)
Outboard	1103c Torqeedo electric



Deck crane	manual
Sea railing	wire
Grab rail (superstructure)	stainless steel
Railing side opening gates	yes
Pushpit	stainless steel
Pulpit	stainless steel - with step-through bow
Life raft	valise (or bag) - Eurovinyl Offshore with hammar release and sliphook
Life raft (pers)	6
Lifebuoy	with lights, drogues and whistle - 2x
Danbuoy	yes
Radar reflector	Seame active
Fenders	And warps
Mooring lines	yes
Spare parts	Boat related
Tools	yes
Radio-cd player	Panasonic CQ-RDP102N
Cockpit speakers	yes
Speakers in salon	yes
Fire extinguisher	6x
Extra info	bow, midship and stern quarter cleats plus additional Stern folding transom cleats
Extra info	Offshore flare pack: 4 x red flares, 4 x red parachute rockets, 2 x buoyant orange smoke signals, 4 collision warning white hand flares.
Extra info	2x mobile recovery ladders,

## RIGGING

Rigging	fractional - 9/10ths
Standing rigging	wire - new 2022
Brand mast	Seldén
Material mast	aluminium





<b>Spreaders</b>	Double
<b>Keel stepped mast</b>	yes
<b>Battcars</b>	- Ronstan Ballslide Series 8
<b>Fully battened mainsail</b>	with Dyneema lazy jacks (2021) - Bsails 2021
<b>Jib</b>	Sanders sails
<b>Genoa furler</b>	Furlex 300S
<b>Gennaker</b>	for standard and light weather for assymetric - with Profurl 5.0 furler
<b>Stormjib</b>	Sanders Sails
<b>Self tacking jib installation</b>	Harken
<b>Reefing System</b>	1 - 2 line reefing. Third reef can be set.
<b>Backstay adjuster</b>	hydraulic
<b>Boomvang</b>	gasspring - reconditioned 2021
<b>Primary sheet winch</b>	manual - 2x Anderson 56ST
<b>Secondary sheet winch</b>	manual - 2x Anderson 46ST
<b>Halyard winches</b>	electric - 2x Anderson 46ST
<b>Spi-pole</b>	aluminium
<b>Gennaker pole</b>	Selden, removable
<b>Extra info</b>	Stress areas where winches and major deck fittings are fixed, are reinforced by replacing the balsa core with plywood, or by using backing plates or large diameter washers depending on type of fitting.
<b>Extra info</b>	boom gooseneck bruhes replaced 2021



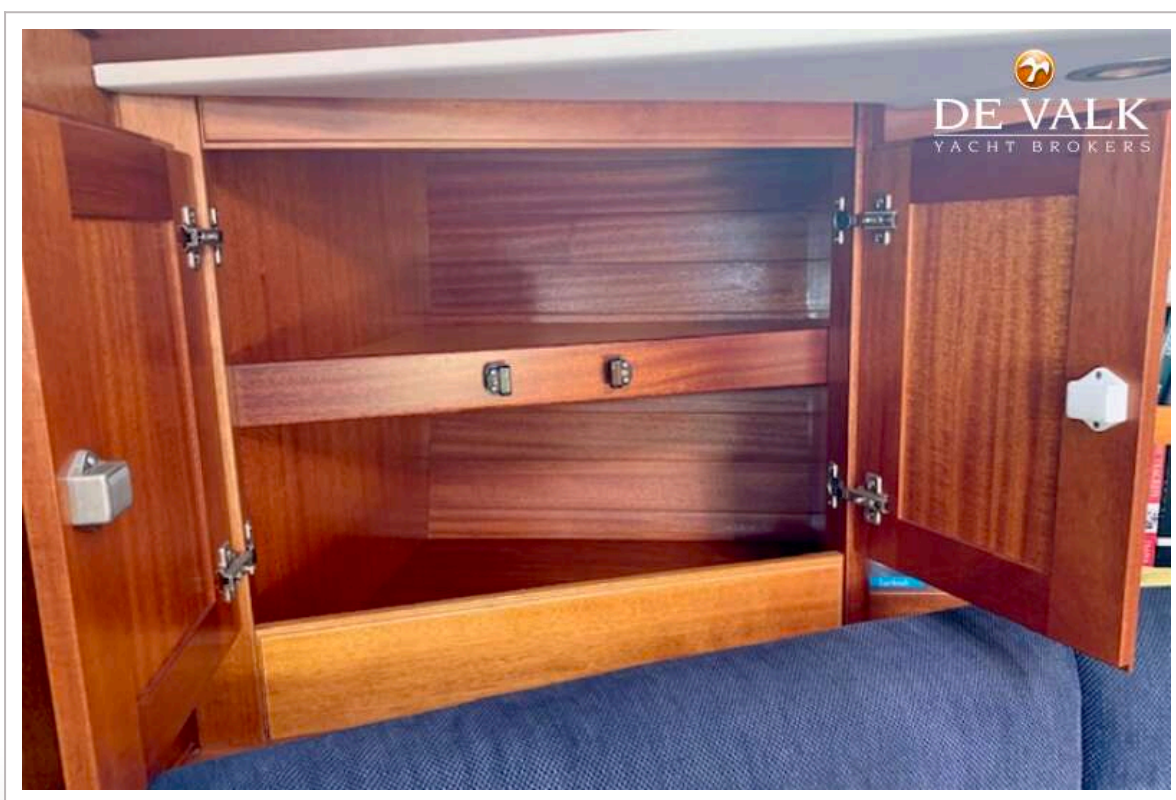
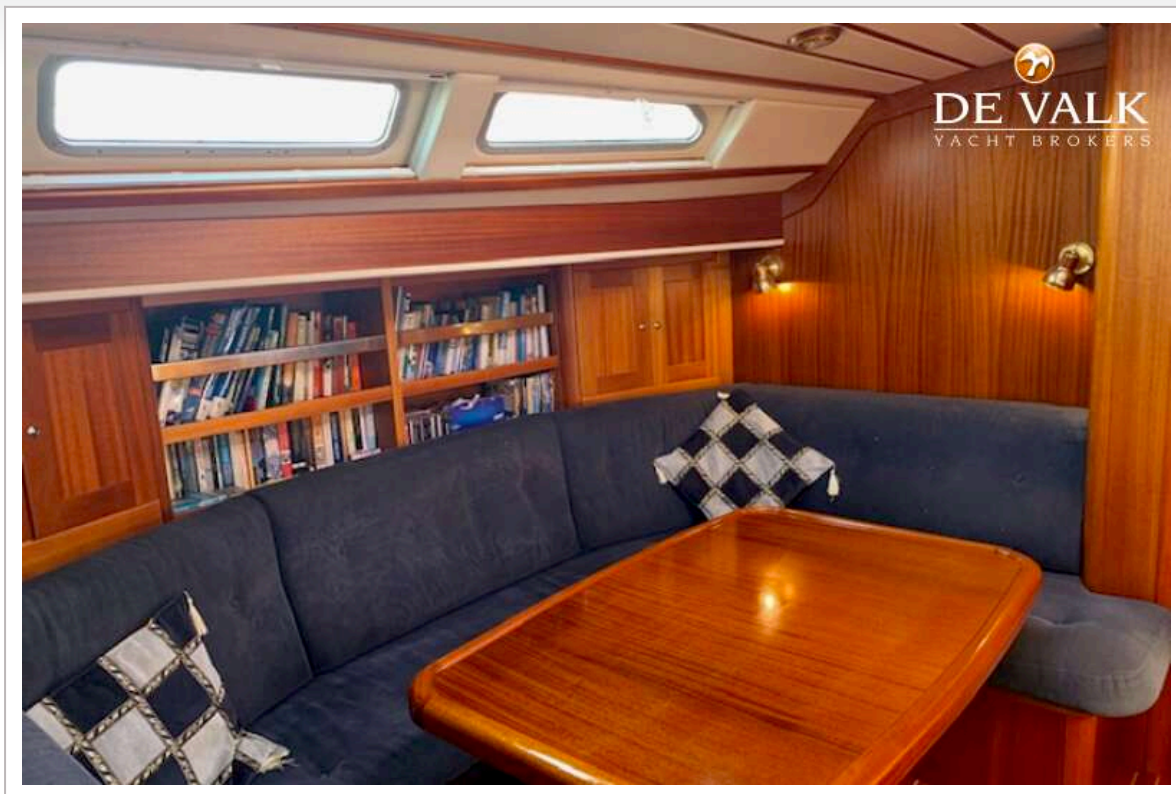






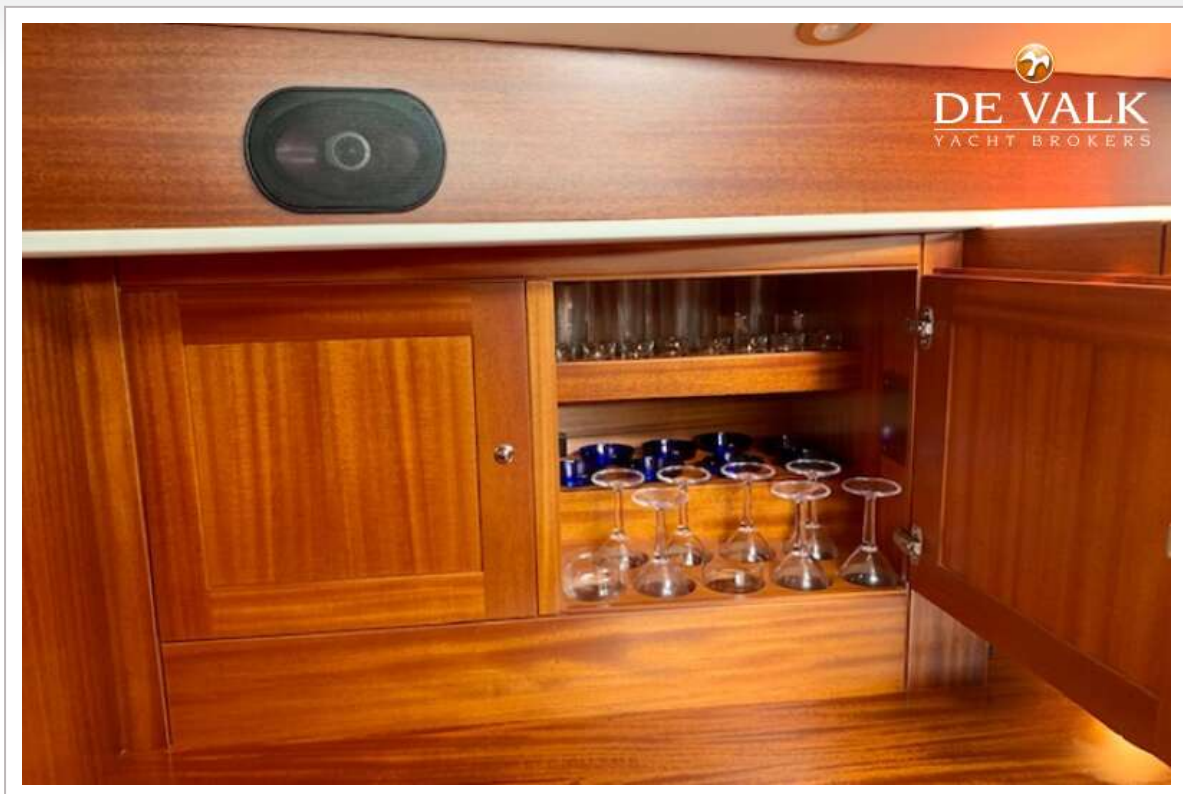


## SWEDEN YACHTS 45





## SWEDEN YACHTS 45



## SWEDEN YACHTS 45

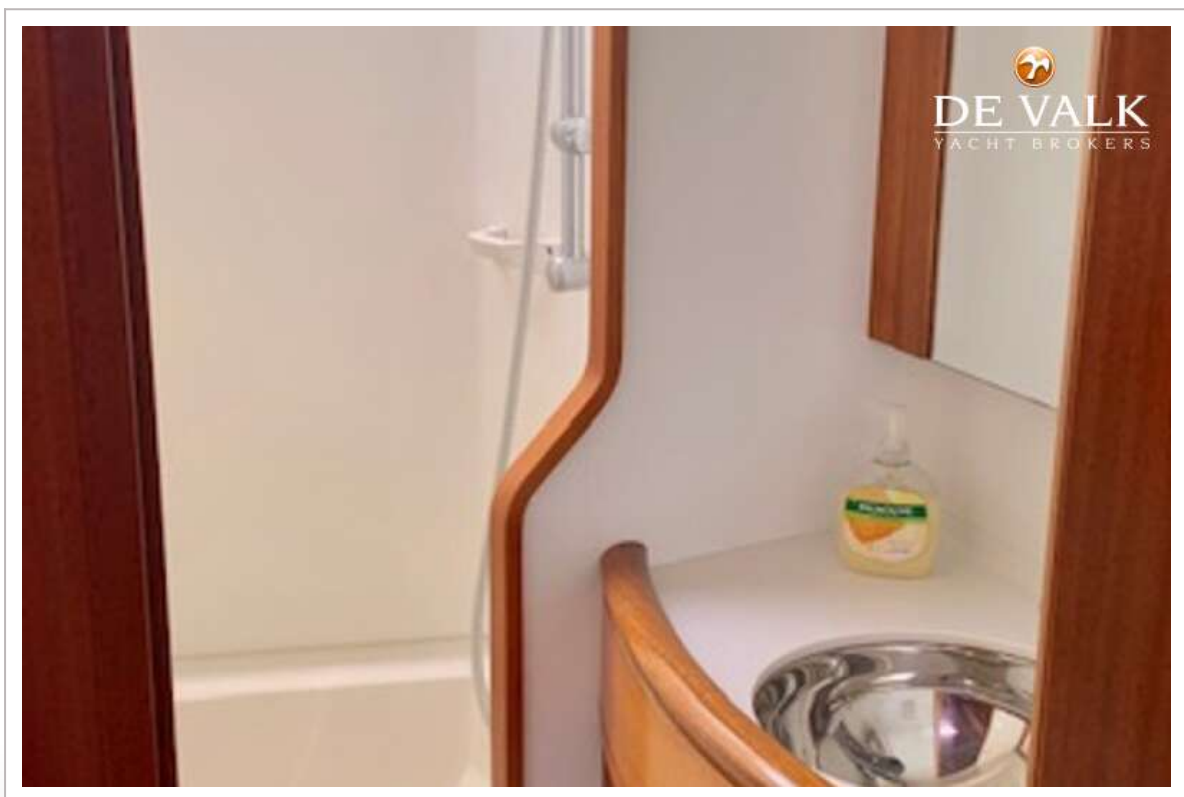
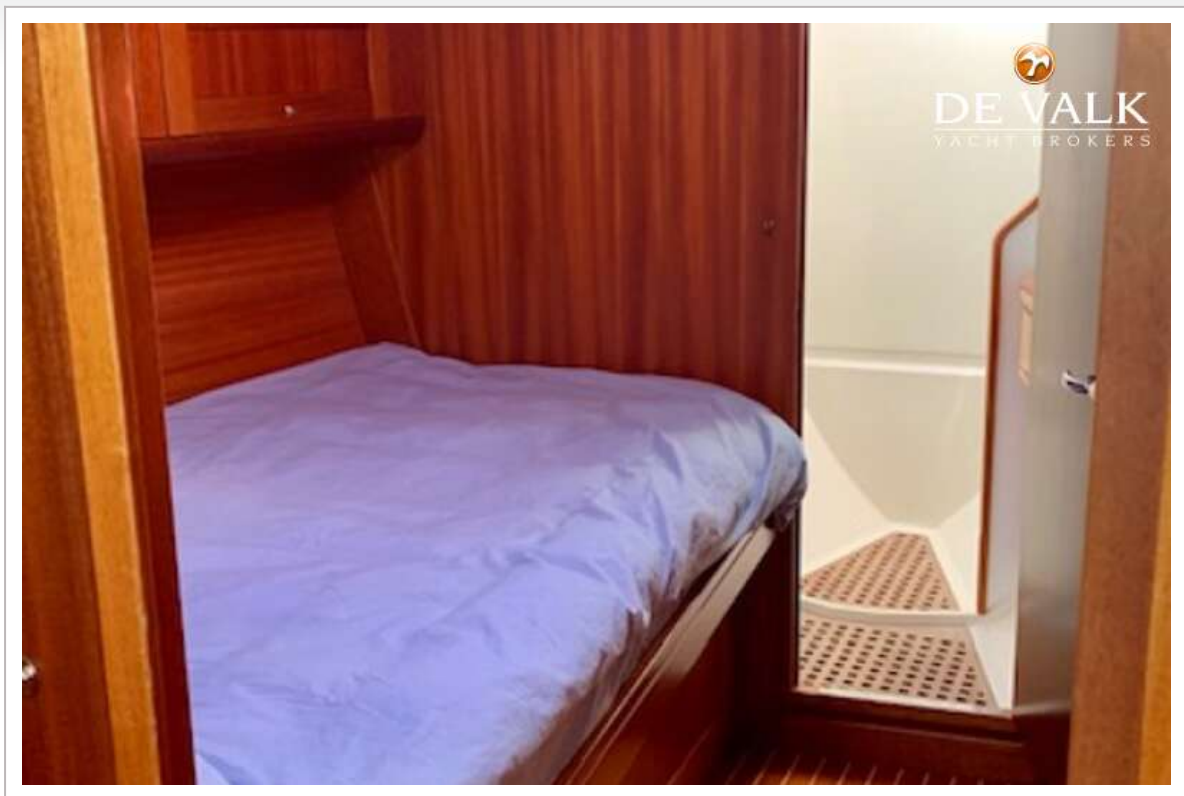


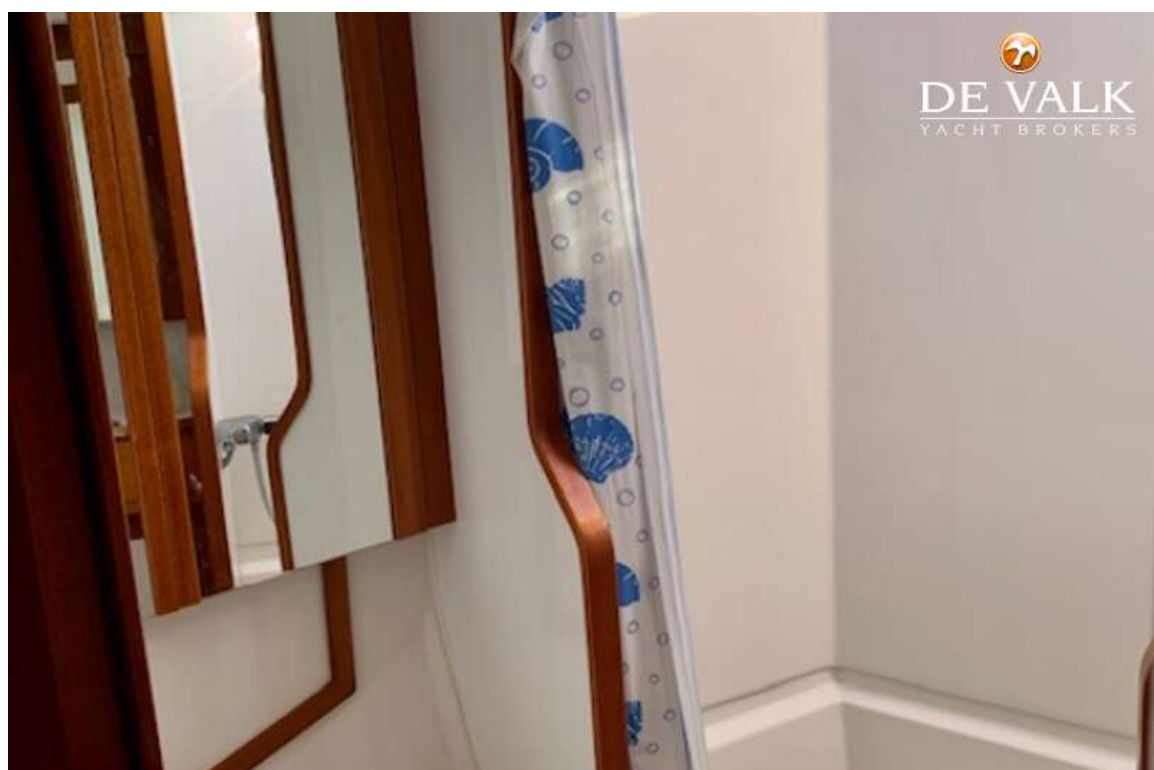


## SWEDEN YACHTS 45

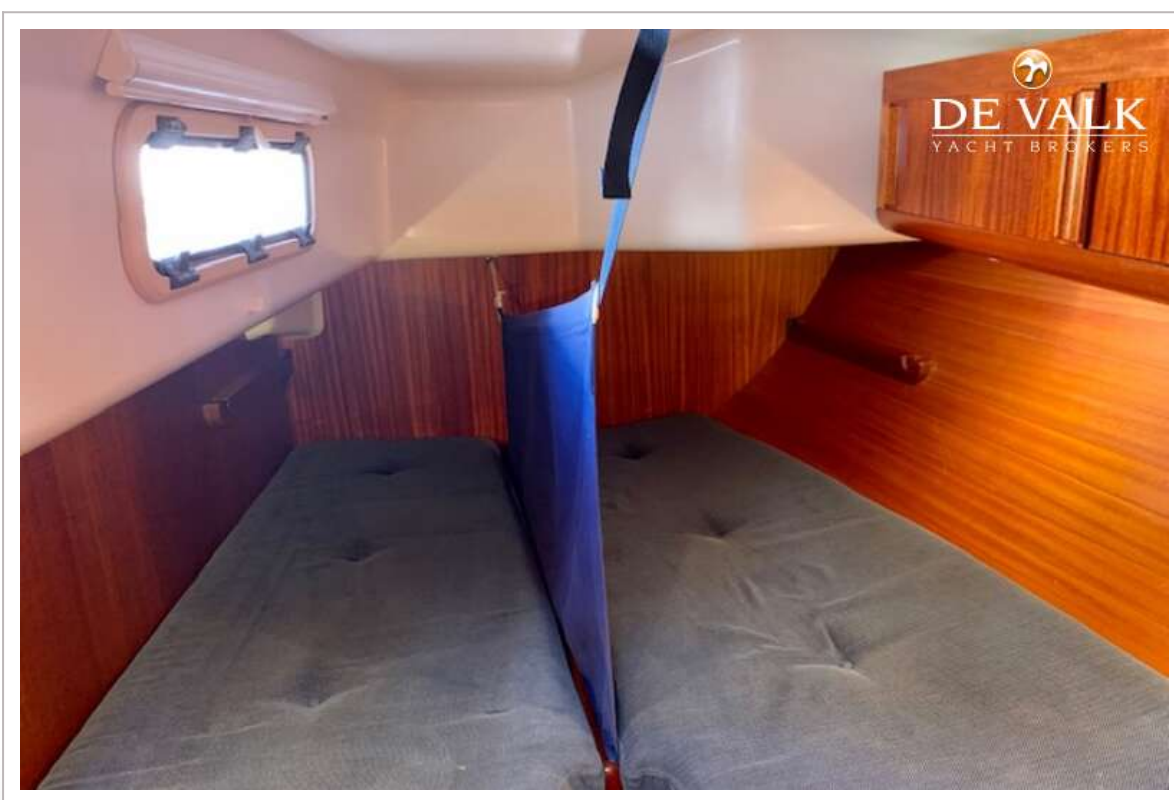
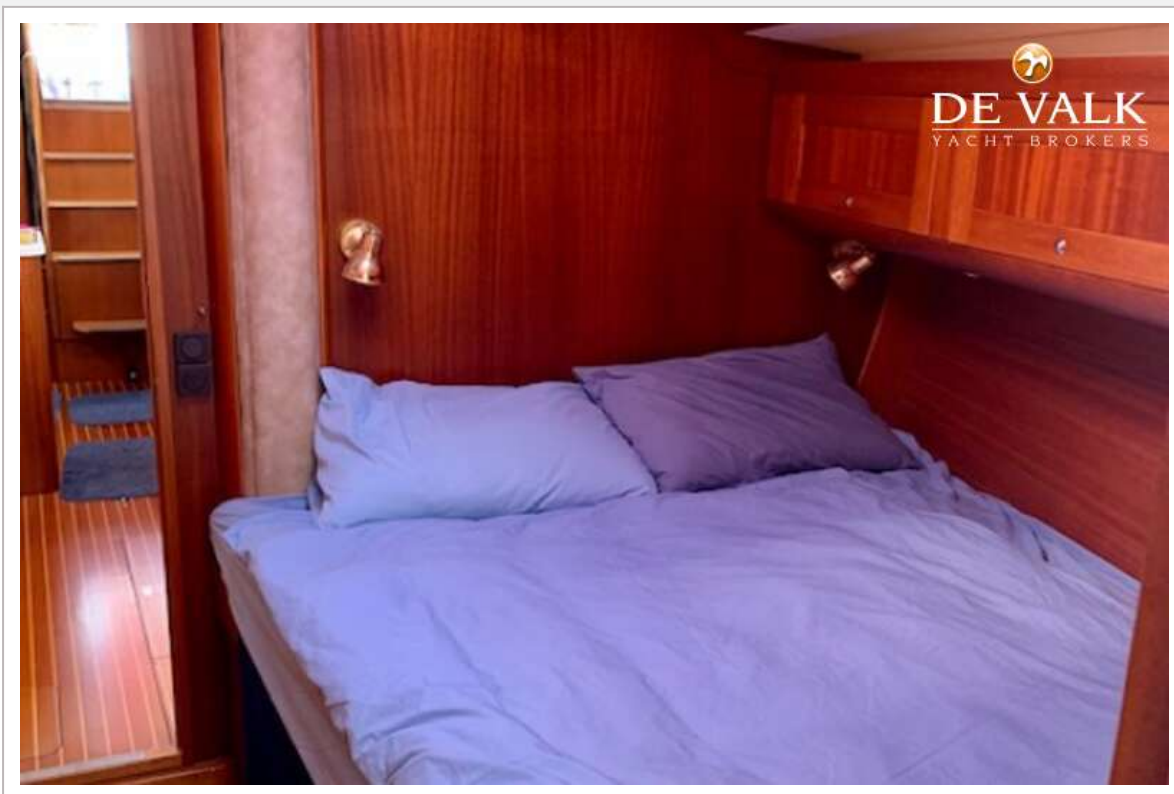








## SWEDEN YACHTS 45





## SWEDEN YACHTS 45



