



DE VALK
YACHT BROKERS



NORDICA 430 SD



DE VALK
YACHT BROKERS

NORDICA 430 SD

BROKER'S COMMENTS

This Nordica 430 SD (sun deck) is one of a series of three build by the famous Danish yard Nordica Yacht aps (since 1969). The unique lay-out of spacious, sheltered cockpit with targa roof, the good sailing (single handed) and steering characteristics makes this boat ideal for long distance sailing and a comfortable and save stay on board. Completely separated rear cabins. The 1st and the second owner has always had the boat professionally maintained (teak deck 2009 electronics 2011) and stored inside during winters. Viewing is possible 7 days a week in our sales marina in Katwoude.

Sander van der Voorn

SPECIFICATIONS

Dimensions	13.10 x 3.93 x 1.75 (m)	Builder	Nordica Yacht ApS
Built	1994	Cabins	3
Material	GRP	Berths	6
Engine(s)	1 x Volvo Penta TMD22 diesel	Hp/Kw	75.00 (hp), 55.13 (kw)
Asking price	sold (VAT)	Lying	elsewhere / Not at sales office

CONTACT

Sales office	De Valk Monnickendam B.V.	Telephone	+31 (0)299 65 63 50
Address	Hoogedijk 6 1145 PM Katwoude NL	E-mail	monnickendam@devalk.nl

DISCLAIMER

These particulars are given in good faith as supplied but cannot be guaranteed.



GENERAL

Model	NORDICA 430 SD
Type	sailing yacht
LOA (m)	13,10
LWL (m)	11,80
Beam (m)	3,93
Draft (m)	1,75
Air draft (m)	19,00
Headroom (m)	2,02
Year built	1994
Launched	1995
Builder	Nordica Yacht ApS
Country	Denmark
Designer	Rolf Eliasson
Displacement (t)	11
Ballast (tonnes)	lead 3,1
Net tonnage	8,9
Hull material	GRP
Hull colour	white
Hull thickness (mm)	Sandwichlaminanat with 30 mm diviny cell kern
Hull shape	round-bilged
Keel type	fin keel
Superstructure material	GRP
Deck material	GRP
Deck finish	teak 2010 replaced
Superstructure deck finish	non-skid moulded in
Antifouling (year)	2016
Dorades	4
Window frame	aluminium
Window material	polycarbonate
Deckhatch	2



Portholes	aluminium 2
Fuel tank (litre)	stainless steel 350 Cleaned 2015
Level indicator (fuel tank)	yes
Freshwater tank (litre)	stainless steel 600
Level indicator (freshwater)	yes
Blackwater tank (litre)	80
Blackwater tank extraction	pump
Wheel steering	yes
Outside helm position	cable steering Whitlock
Emergency tiller	yes

ACCOMMODATION

Cabins	3
Berths	6
Interior	teak
Floor	teak and holly
Open cockpit	yes
Aft deck	Sun deck
Pilot house/deck saloon	With cabrio roof
Saloon	yes
Headroom saloon (m)	2.02
Heating	diesel ducted hot air Ardic
Heating 2	diesel ducted hot air Ardic (2016)
Navigation center	yes
Chart table	yes
Aft Cabin	2 cabins
Dining room	yes
Dinette	yes
Dinette to convert into berth	yes
Opening door to cockpit	yes
Opening door to aft deck	yes



Galley	yes
Countertop	Duropol
Sink	stainless steel Double
Cooker	calor gas 3 burner
Oven	yes
Fridge	100 Litr.
Freezer	In fridge
Hot water system	220V/engine/heating
Water pressure system	electrical
Manual and/or foot pump	yes
Crockery	yes
Owners cabin	double bed
Bed length (m)	Slatted base 2,00
Wardrobe	hanging/drawers/shelves
Bathroom	separate
Toilet	shared
Toilet system	manual Jabsco
Wash basin	in the bathroom
Shower	shared
Guest cabin 1	double bed
Bed length (m)	Slatted base 1,90
Wardrobe	hanging/drawers/shelves
Bathroom	separate
Toilet	shared
Toilet system	manual Jabsco
Wash basin	in the bathroom
Shower	shared
Guest cabin 2	double bed
Bed length (m)	1,90
Wardrobe	hanging/drawers/shelves



MACHINERY

No of engines	1
Make	Volvo Penta
Type	TMD22
HP	75,00
kW	55,13
Fuel	diesel
Year installed	1994
Maximum speed (kn)	9,1
Cruising speed (kn)	7
Engine hours	2460
Engine cooling system	freshwater heat exchanger
Drive	shaft
Shaft seal	Vovo Penta
Engine controls	bowden cable
Gearbox	mechanical
Bowthruster	electric
Exhaust	watercooled
Propeller type	folding Gori with overdrive must be adjusted
Propeller blades	3
Propeller shaft material	stainless steel
Shaft lubrication	water
Manual bilge pump	yes
Electric bilge pump	yes
Electrical installation	12v / 220v
Start battery	Fullriver HC AGM 75 Ah
Service battery	3 x Fullriver AGM 210 Ah
Battery monitor	Philipi Battery computer BCM (2012)
Battery charger	2 x Sterling Procharge Ultra 12v- 40A (2012)
Shorepower	with cable
Watermaker	PUR



Extra info

Philipi Aktiver shunt 300A (2012)

Extra info

Double dynamo with Sterling Power dynamo Battery charger 130 A

NAVIGATION

Compass

yes

Electric compass

yes

Depth sounder/log

Autohelm Tridata

Windset

Autohelm

Fish finder

Lowrance HDS-8 (2011)

VHF

Simrad RS35 VHF (2015)

Autopilot

Autohelm ST 7000

Radar/GPS/plotter

Lowrance HDS-10m & Lowrance HDS-8 (2011)

Electronis chart(s)

Navionics Type Platium Plus XL3

AIS transponder

Receiver Comar AIS

Navigation lights

Three colour top light

Extra info

Airmar B744V Triducer

EQUIPMENT

Fixed windscreen

yes

Sprayhood

yes

Cockpit cover

yes

Cockpit cushions

yes

Cockpit table

yes

Bathing platform

Sun Deck

Boarding ladder

stainless steel

Deck shower

Hot water

Anchor

yes

Anchor chain

10 m stainless steel, 30 m galvanized steel 32 m robe

Anchor 2

yes

Anchor chain

50 m perpendicular line



Windlass	yes
Dinghy	inflatable Zodiac C2609
Outboard	Honda BF4
Sea railing	wire
Grab rail (superstructure)	stainless steel
Safety lines on deck	yes
Horn	electric
Radar reflector	yes
Fenders	yes
Mooring lines	yes
TV	yes
TracVision ball	Need services
Radio-cd player	Clarion CMD6
iPod connection	yes
Cockpit speakers	yes
Speakers in salon	yes
Speakers in cabin	yes

RIGGING

Rigging	sloop
Standing rigging	wire
Brand mast	Seldén
Material mast	aluminium
Spreaders	2
Keel stepped mast	yes
Mainsail	45,5 m2
Stoway mast	yes
Jib	16,5 m2
Genoa	45,7 m2
Genoa furler	Furlex (2014)
Genoa cover	(2014)



NORDICA 430 SD

Gennaker	95,0 m2
Stormjib	12,0
Backstay adjuster	hydraulic Navtec
Boomvang	gasspring
Primary sheet winch	2x Lewmar 54 2 speed
Secondary sheet winch	2x Lewmar 40 2 speed
Multifunctional winches	Lewmar 44 2 speed
Spi-pole	aluminium
Extra info	Portable baby stay



NORDICA 430 SD



NORDICA 430 SD



NORDICA 430 SD



NORDICA 430 SD



NORDICA 430 SD



NORDICA 430 SD



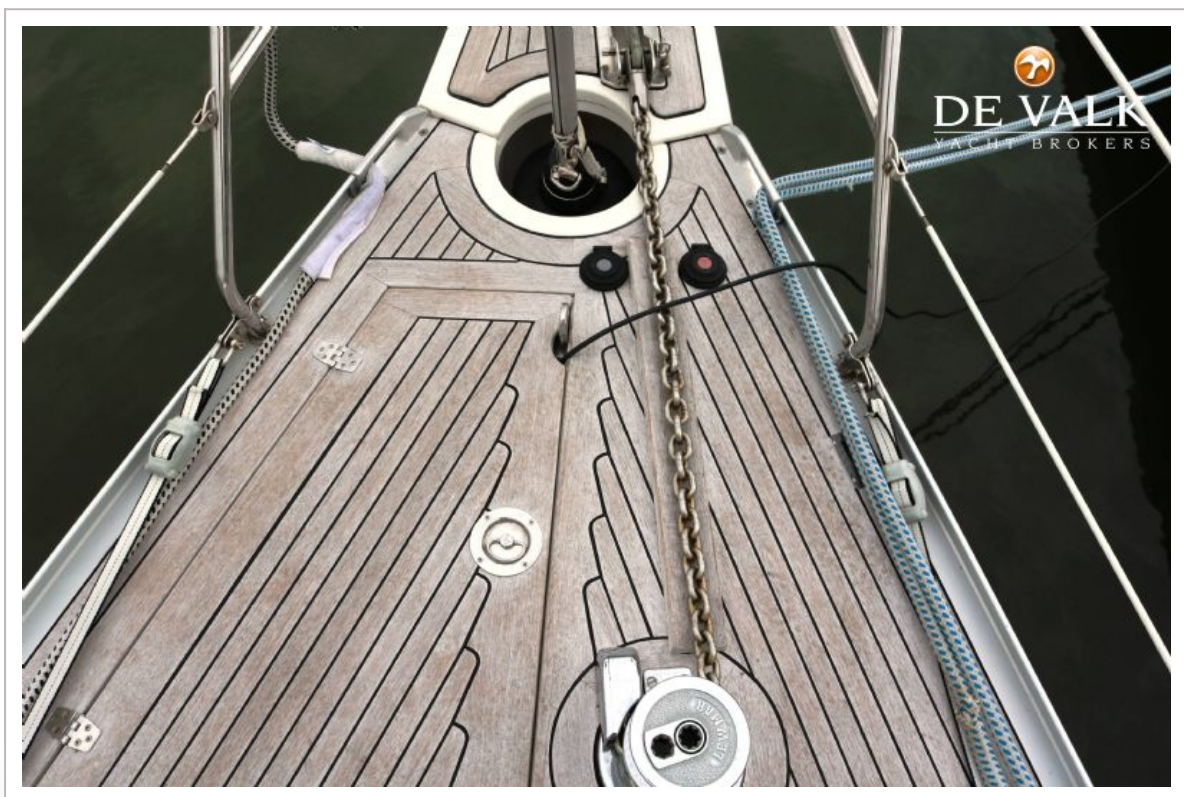
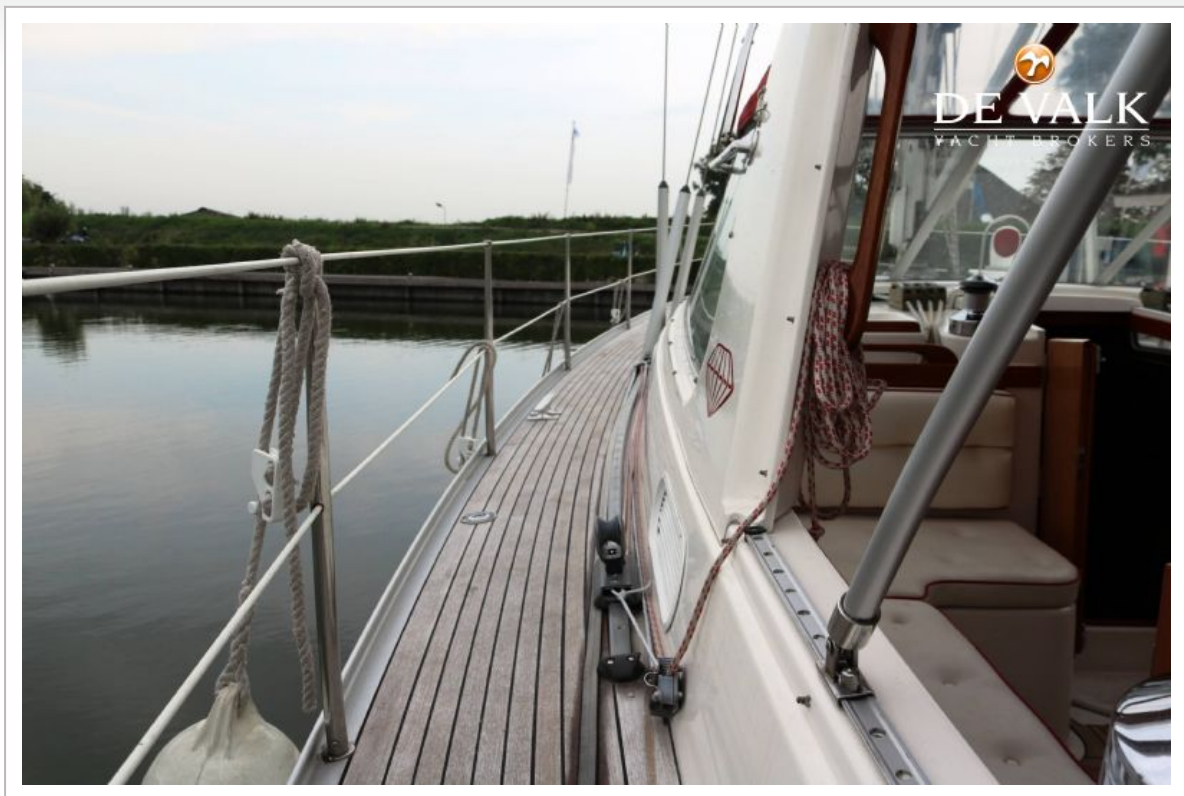
NORDICA 430 SD



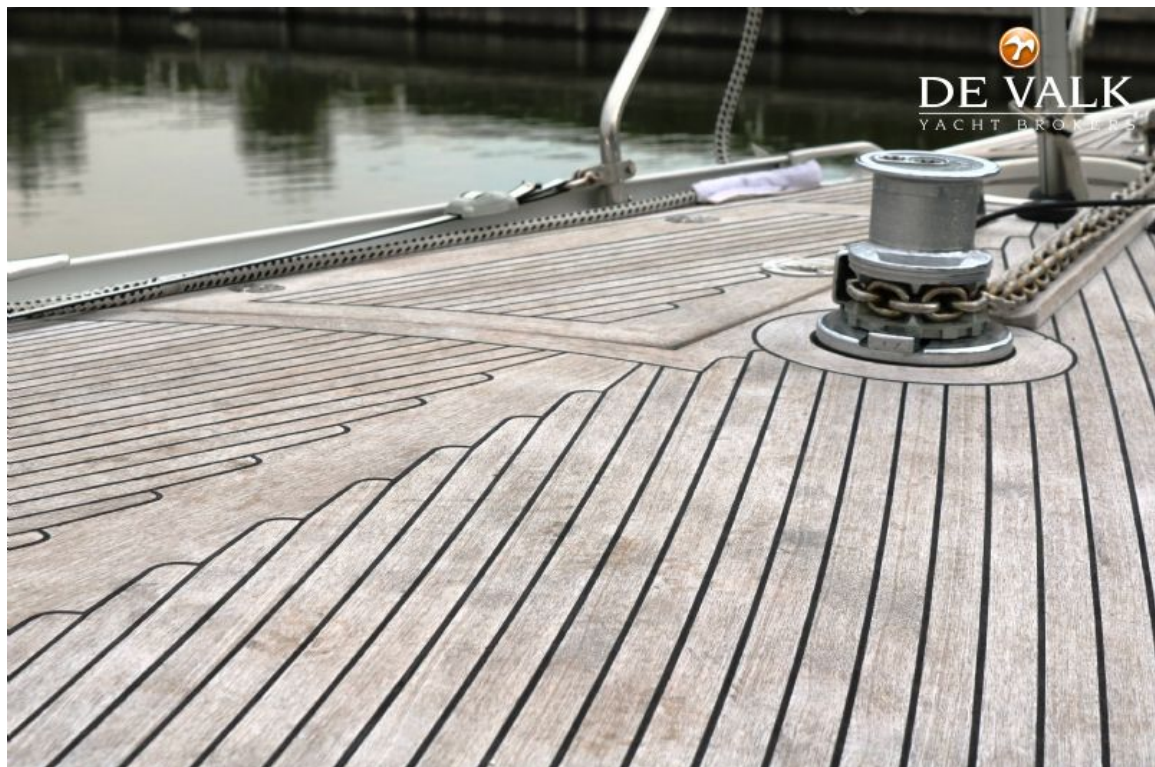
NORDICA 430 SD



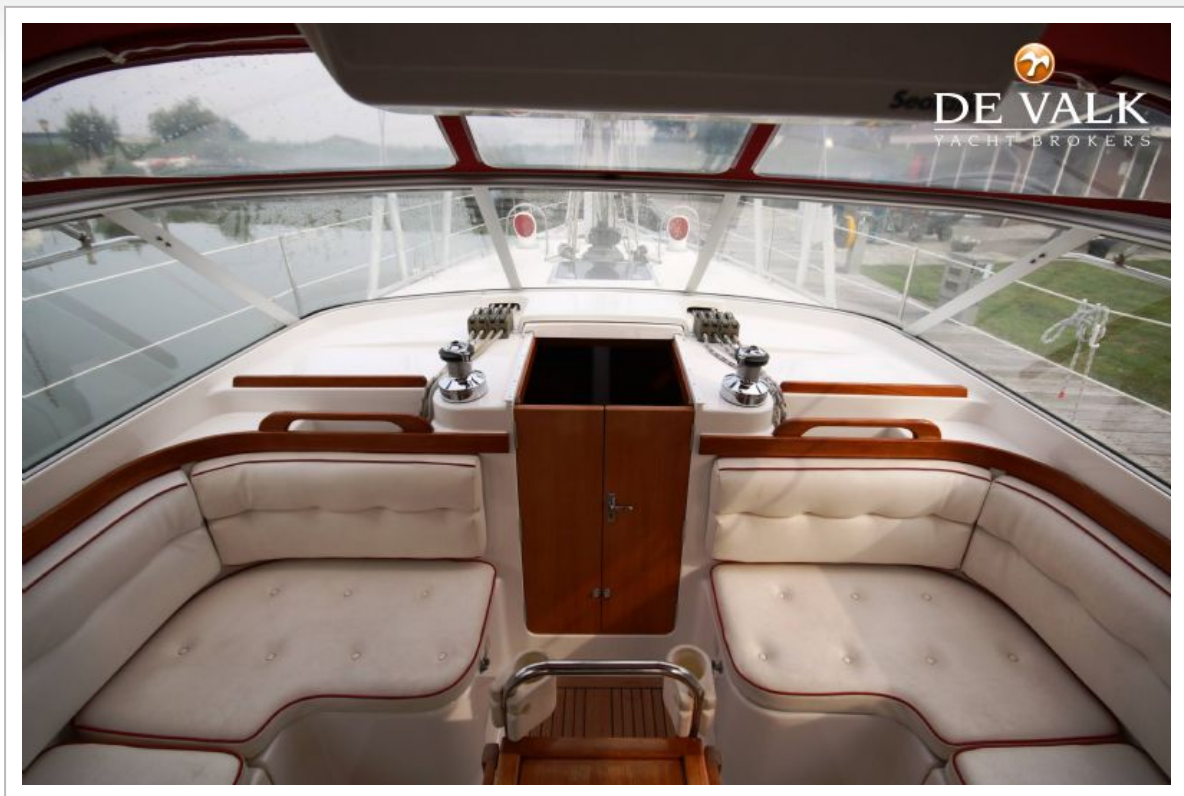
NORDICA 430 SD



NORDICA 430 SD



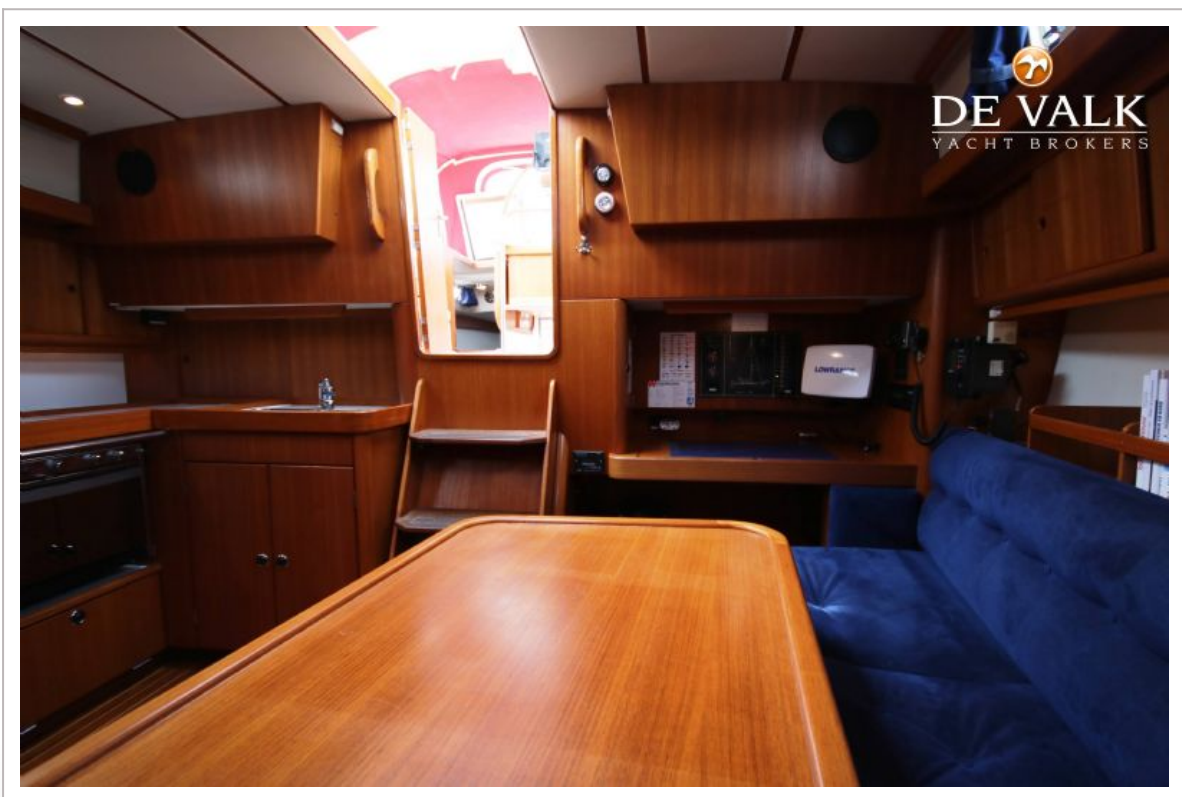
NORDICA 430 SD



NORDICA 430 SD



NORDICA 430 SD



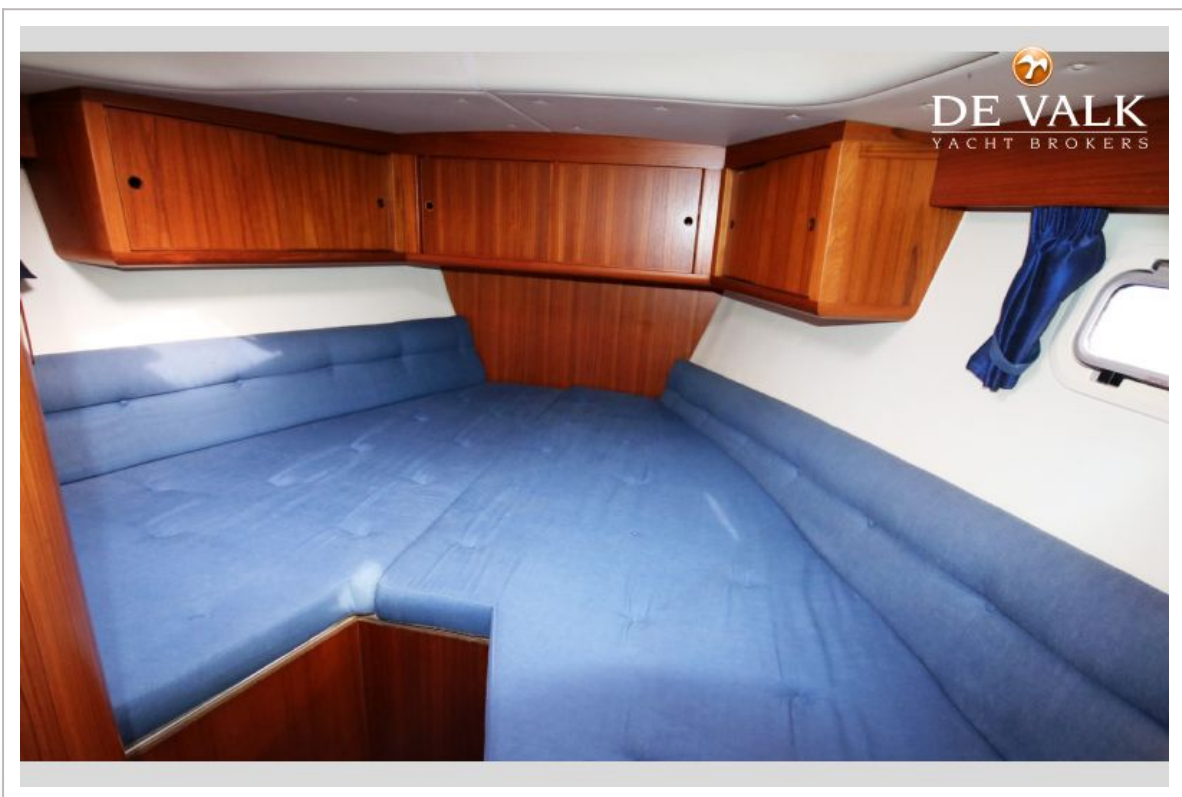
NORDICA 430 SD



NORDICA 430 SD



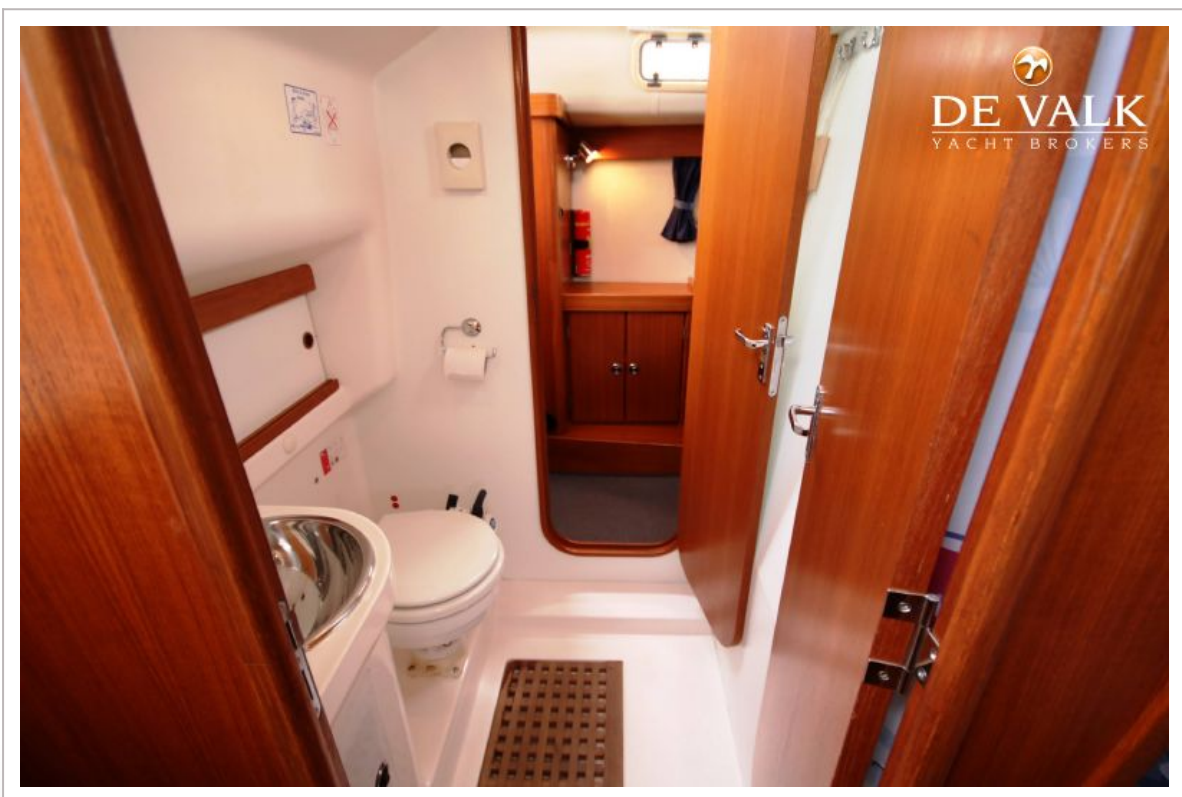
NORDICA 430 SD



NORDICA 430 SD



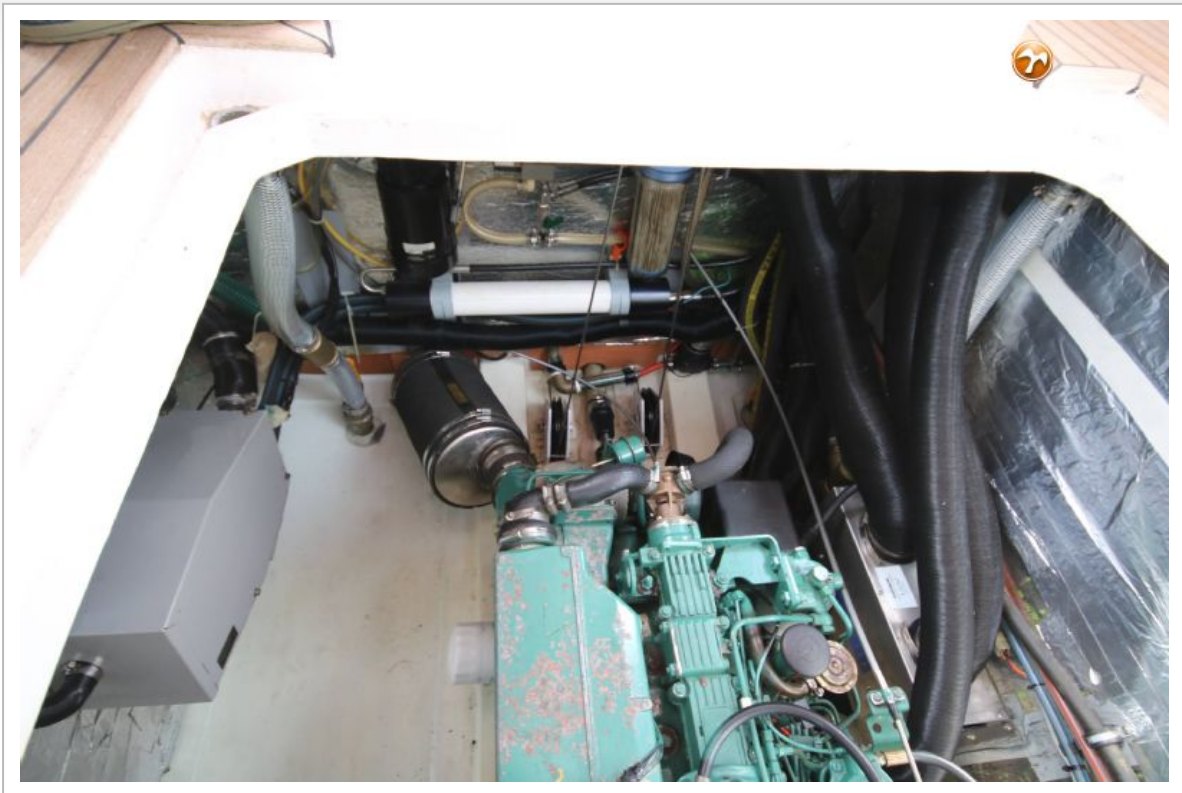
NORDICA 430 SD



NORDICA 430 SD



NORDICA 430 SD



NORDICA 430 SD



NORDICA 430 SD

