



HALLBERG RASSY 312 MKI



HALLBERG RASSY 312 MKI

BROKER'S COMMENTS

Introduced in 1979, the Hallberg Rassy 312 was designed by Christoph Rassy and Olle Enderlein. It was one of the most popular models Hallberg Rassy built, with almost 700 built during the long production run from 1979 to 1993. A small yacht made for big waters. This design is sturdy built with the comfort and luxury finish what you would expect from a Hallberg Rassy. Located in our sales marina in Monnickendam and ready for inspection. You can visit her 7 days a week.

Reinier van der Wolf

SPECIFICATIONS

| | | | |
|---------------------|--------------------------------|----------------|-----------------------------|
| Dimensions | 9.42 x 3.08 x 1.62 (m) | Builder | Hallberg-Rassy Varvs, Ellös |
| Built | 1985 | Cabins | 2 |
| Material | GRP | Berths | 5 |
| Engine(s) | 1 x Volvo Penta MD 2003 diesel | Hp/Kw | 28.00 (hp), 20.58 (kw) |
| Asking price | sold (VAT) | Lying | at sales office |

CONTACT

| | | | |
|---------------------|---------------------------------------|------------------|------------------------|
| Sales office | De Valk Monnickendam B.V. | Telephone | +31 (0)299 65 63 50 |
| Address | Hoogedijk 6 1145 PM Katwoude NL | E-mail | monnickendam@devalk.nl |

DISCLAIMER

These particulars are given in good faith as supplied but cannot be guaranteed.



GENERAL

| | |
|----------------------------|-----------------------------|
| Model | HALLBERG RASSY 312 MKI |
| Type | sailing yacht |
| LOA (m) | 9,42 |
| LWL (m) | 7,70 |
| Beam (m) | 3,08 |
| Draft (m) | 1,62 |
| Air draft (m) | 13,70 |
| Headroom (m) | 1,83 |
| Year built | 1985 |
| Builder | Hallberg-Rassy Varvs, Ellös |
| Country | Sweden |
| Designer | Olle Enderlein |
| Displacement (t) | 4,9 |
| Ballast (tonnes) | cast iron 2,2 |
| CE norm | NA |
| Hull material | GRP |
| Hull colour | white |
| Hull shape | round-bilged |
| Keel type | long keel |
| Superstructure material | GRP |
| Rubbing strake | Bonze |
| Deck material | GRP |
| Deck finish | teak 2006 |
| Superstructure deck finish | non-skid moulded in |
| Cockpit deck finish | teak |
| Dorades | 2x |
| Window frame | aluminium |
| Window material | polycarbonate |
| Deckhatch | with 2 covers 3x |
| Portholes | aluminium |



| | |
|------------------------------|-----------------------------------|
| Fuel tank (litre) | stainless steel 100 |
| Level indicator (fuel tank) | VDO |
| Freshwater tank (litre) | GRP 120 |
| Level indicator (freshwater) | Intermittent defective gauge. VDO |
| Blackwater tank (litre) | polyethylene |
| Blackwater tank extraction | deck extraction + pump |
| Tiller | yes |

ACCOMMODATION

| | |
|-------------------------|---|
| Cabins | 2 |
| Berths | 5 |
| Interior | mahogany |
| Floor | carpet Teak and holly + |
| Saloon | yes |
| Headroom saloon (m) | 1,85 |
| Heating | 240V. bulkhead electric heater (see extra info) |
| Navigation center | yes |
| Chart table | yes |
| Convertible berth | in saloon |
| Galley | yes |
| Countertop | wood |
| Sink | stainless steel 1x |
| Cooker | calor gas Optimus, 3 burner |
| Gas alarm | Pilot |
| Fridge | yes |
| Water pressure system | manual |
| Manual and/or foot pump | yes |
| Owners cabin | bunk bed |
| Bed length (m) | 2.00 |
| Bathroom | shared |
| Toilet | shared |



| | |
|---------------|--|
| Toilet system | manual Jabsco |
| Wash basin | in the bathroom |
| Shower | shared |
| Extra info | Heater fitted to end of saloon table, operating only shore power |
| Guest cabin 1 | |
| Wardrobe | drawers and shelves |
| Extra info | Ceeling lights, toilet,galley, chart table high and low setting. |

MACHINERY

| | |
|---------------------|---------------------|
| No of engines | 1 |
| Make | Volvo Penta |
| Type | MD 2003 |
| HP | 28,00 |
| kW | 20,58 |
| Fuel | diesel |
| Year installed | 1985 |
| Maximum speed (kn) | 6,5 |
| Cruising speed (kn) | 5,5 |
| Consumption (l/hr) | 1.2 at 2499 rpm |
| Range (nm) | 400 |
| Engine hours | 3665 |
| Drive | sail-drive |
| Saildrive seal | replaced April 2014 |
| Engine controls | bowden cable |
| Gearbox | mechanical |
| Exhaust | watercooled |
| Propeller type | folding |
| Propeller blades | 3 |
| Manual bilge pump | yes |
| Electric bilge pump | yes |
| Bilge alarm | yes |



| | |
|-------------------------|---|
| Electrical installation | 12V / 220V |
| Batteries | 3 |
| Start battery | May 2014 1 |
| Service battery | May 2014 2 |
| Battery monitor | yes |
| Battery charger | yes |
| Shorepower | with cable |
| Extra info | Engine has had a full service in March 2019 |
| Extra info | 1x 2 blade propeller as spare on board |

NAVIGATION

| | |
|-------------------|--------------------------------|
| Compass | yes |
| Depth sounder | yes |
| Windset | yes |
| Repeater | wind/gps/depth in cockpit |
| VHF | with speaker in cockpit Navman |
| Autopilot | Simrad TP32 |
| GPS | Garmin |
| Navtex | Navtex Pro-Plus |
| AIS receiver | yes |
| Navigation lights | yes |
| Searchlight | yes |

EQUIPMENT

| | |
|------------------|-------------------|
| Fixed windscreen | with grab handles |
| Sprayhood | yes |
| Cockpit cover | yes |
| Cockpit cushions | yes |
| Cockpit table | yes |
| Boarding ladder | stainless steel |
| Bow ladder | yes |



HALLBERG RASSY 312 MKI

| | |
|----------------------|--|
| Anchor | CQR Plough |
| Anchor chain | 55 m. |
| Anchor 2 | |
| Windlass | manual |
| Deck wash | yes |
| Sea railing | wire |
| Pushpit | yes |
| Pulpit | yes |
| Safety harness | yes |
| Lifebuoy | yes |
| Danbuoy | yes |
| Safety lines on deck | yes |
| Wiper | yes |
| Radar reflector | yes |
| Fenders | yes |
| Mooring lines | yes |
| Spare parts | yes |
| Speakers in salon | yes |
| Fire extinguisher | yes |
| Extra info | Included in the sale: brass clock, barometer, tidal clock. |
| Extra info | Included in the sale: thermometer and hygrometer (humidity). |

RIGGING

| | |
|------------------|--------------------------------------|
| Rigging | sloop |
| Standing rigging | wire |
| Brand mast | Seldén |
| Material mast | aluminium |
| Spreaders | yes |
| Mainsail | cleaned + stitching check March 2019 |
| Mainsail cover | yes |
| Jib | yes |



| | |
|-------------------------|-------------------------------------|
| Genoa | cleaned and repaired September 2018 |
| Genoa furler | Reckmann |
| Reefing System | slabreefing |
| Boomvang | tackle |
| Primary sheet winch | 2x Lewmar ST40 |
| Halyard winches | 2x |
| Reefing winch | 1x |
| Multifunctional winches | 1x Lewmar ST16 |
| Winchcovers | yes |
| Spi-pole | aluminium |
| Jockey-pole | aluminium |



HALLBERG RASSY 312 MKI



HALLBERG RASSY 312 MKI



HALLBERG RASSY 312 MKI



HALLBERG RASSY 312 MKI



HALLBERG RASSY 312 MKI



HALLBERG RASSY 312 MKI



HALLBERG RASSY 312 MKI



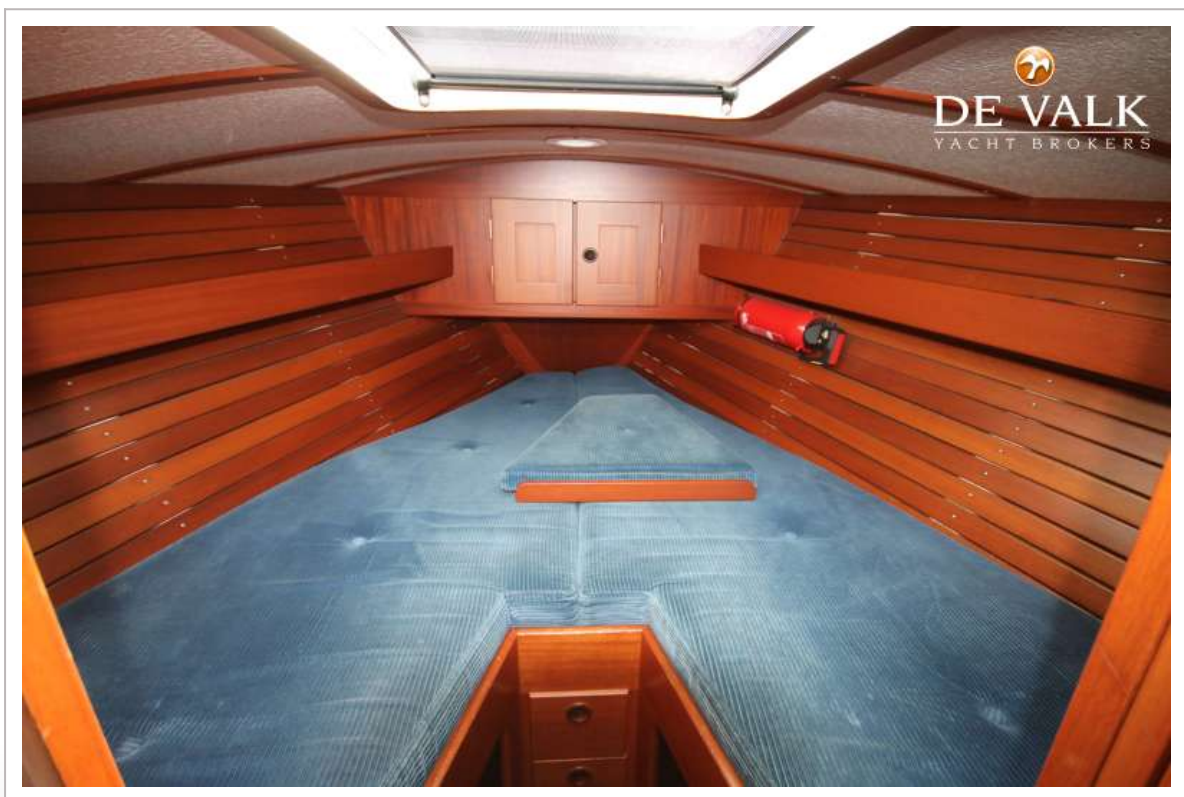
HALLBERG RASSY 312 MKI



HALLBERG RASSY 312 MKI



HALLBERG RASSY 312 MKI



HALLBERG RASSY 312 MKI



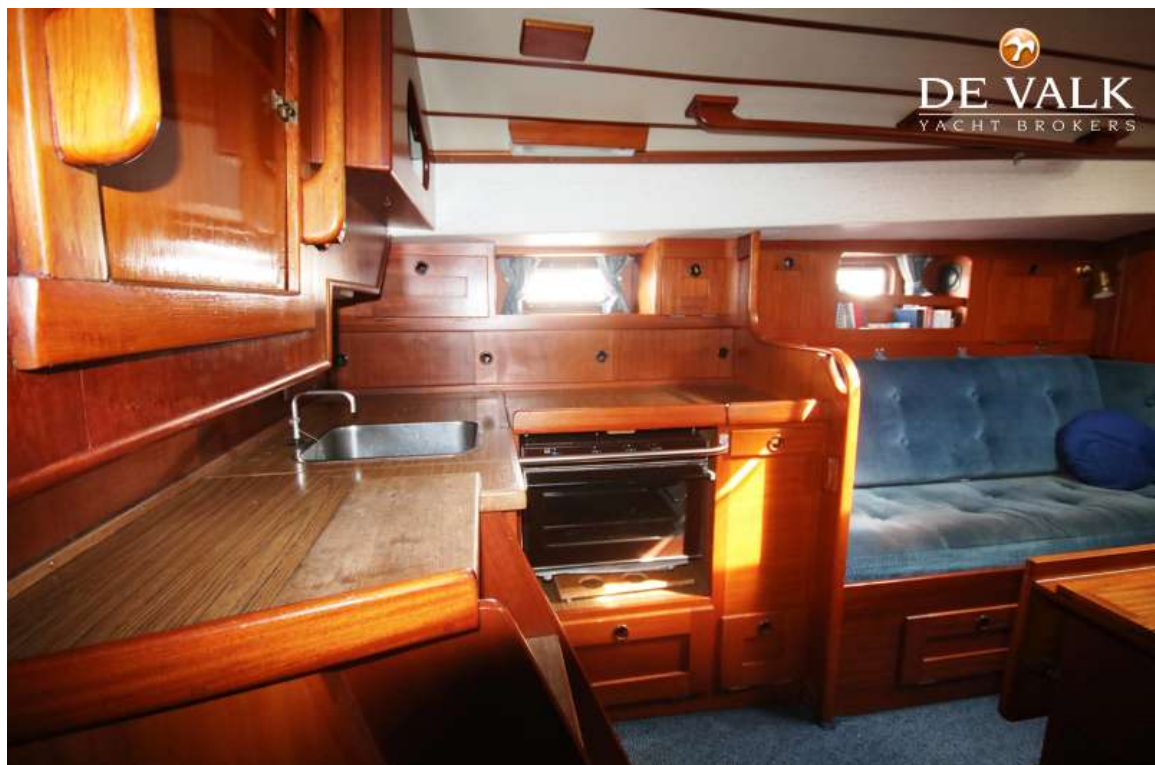
HALLBERG RASSY 312 MKI



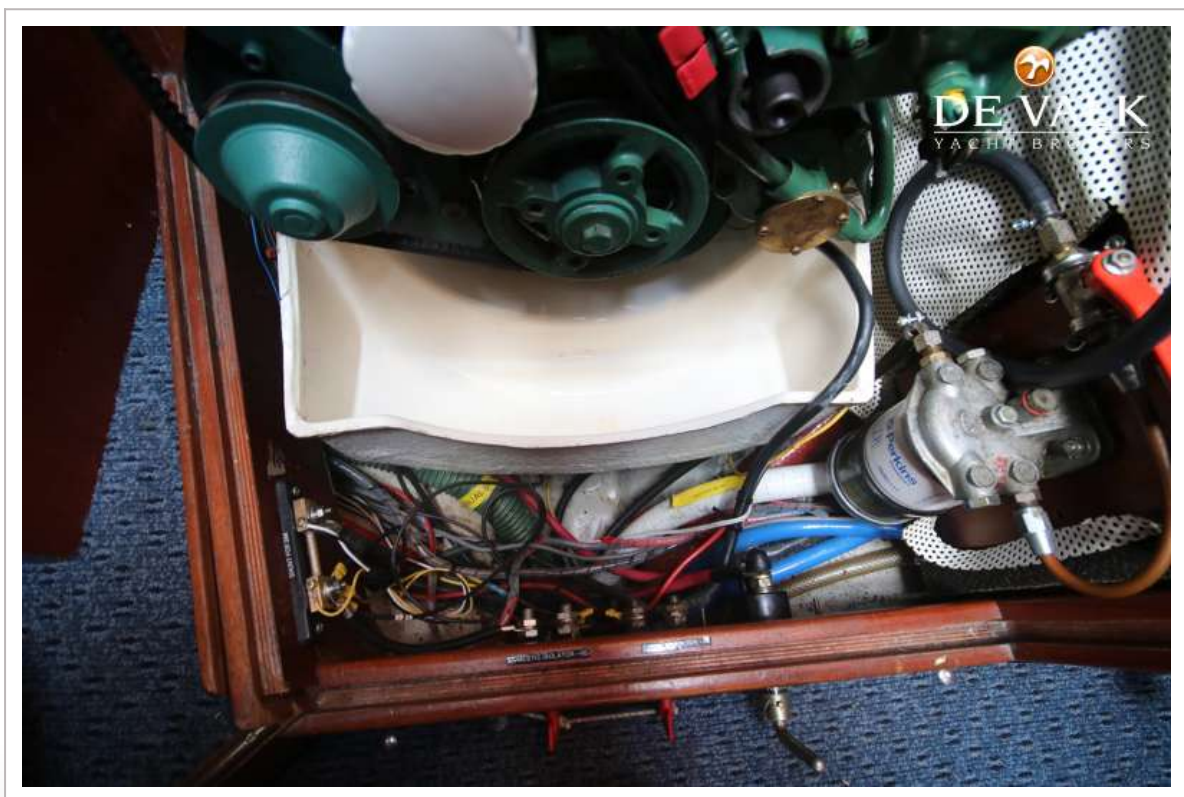
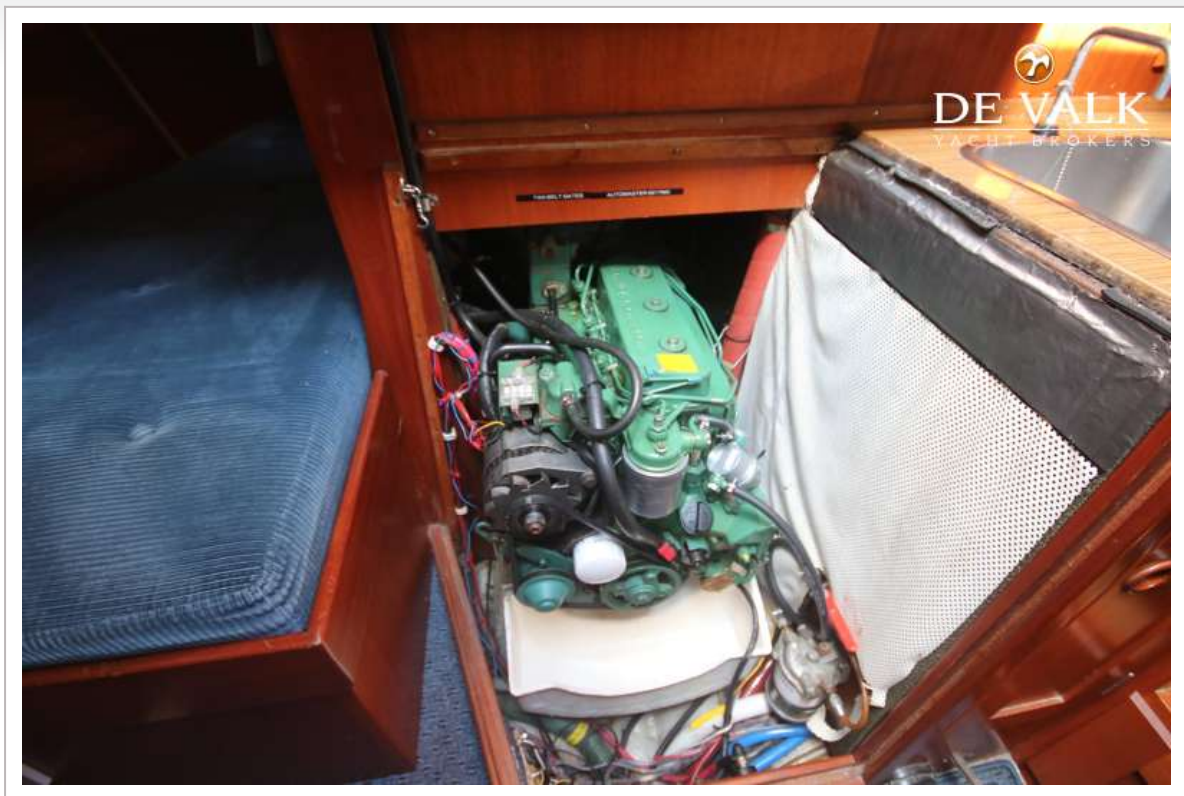
HALLBERG RASSY 312 MKI



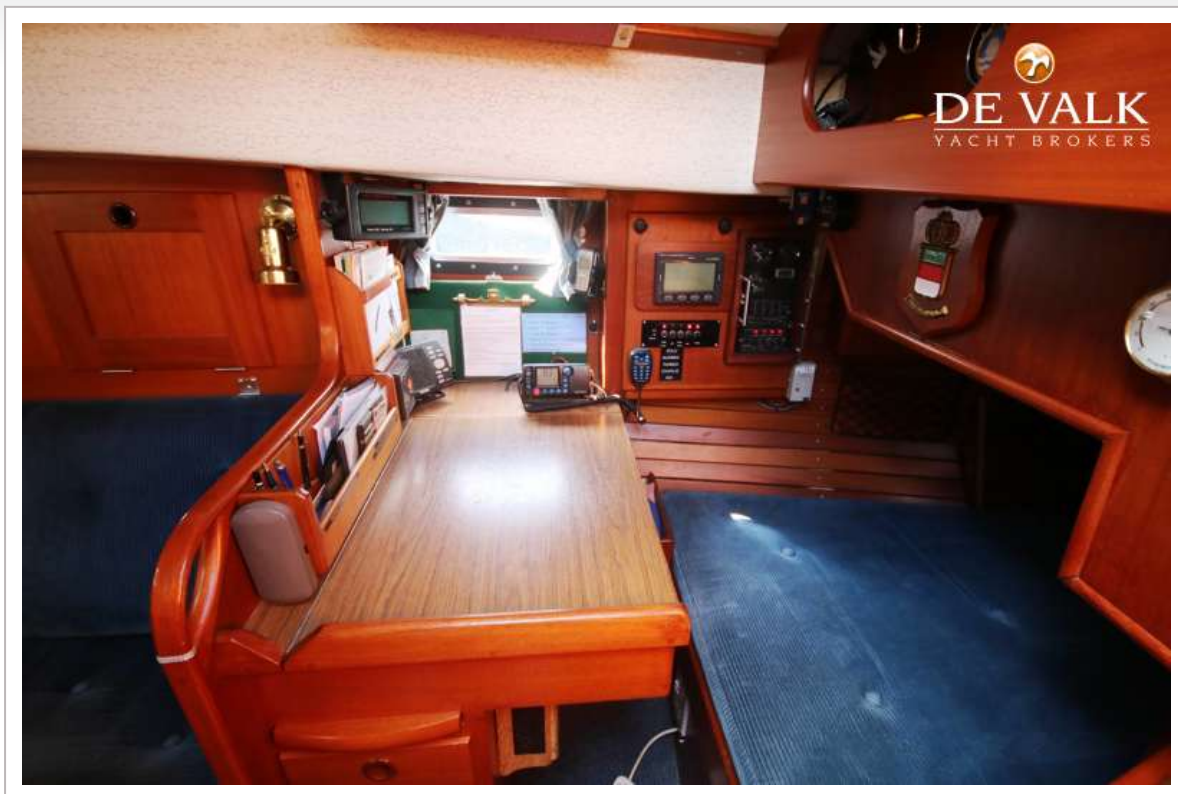
HALLBERG RASSY 312 MKI



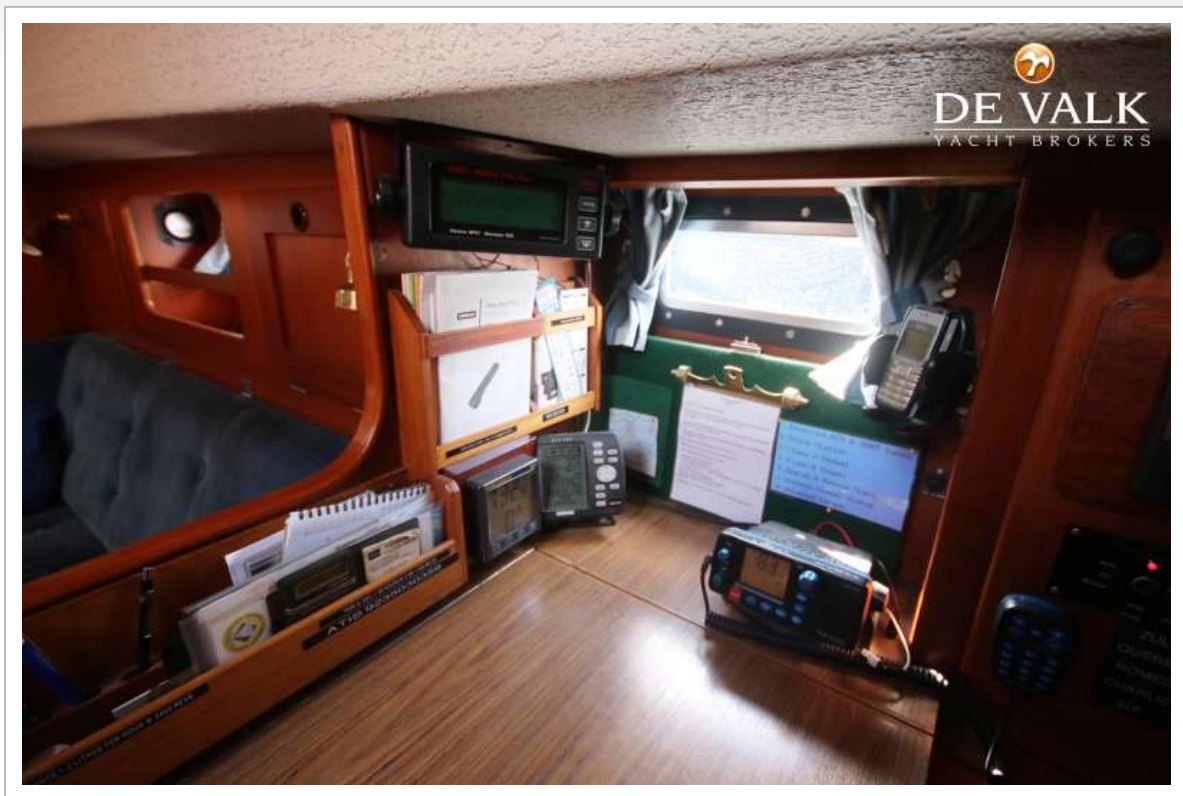
HALLBERG RASSY 312 MKI



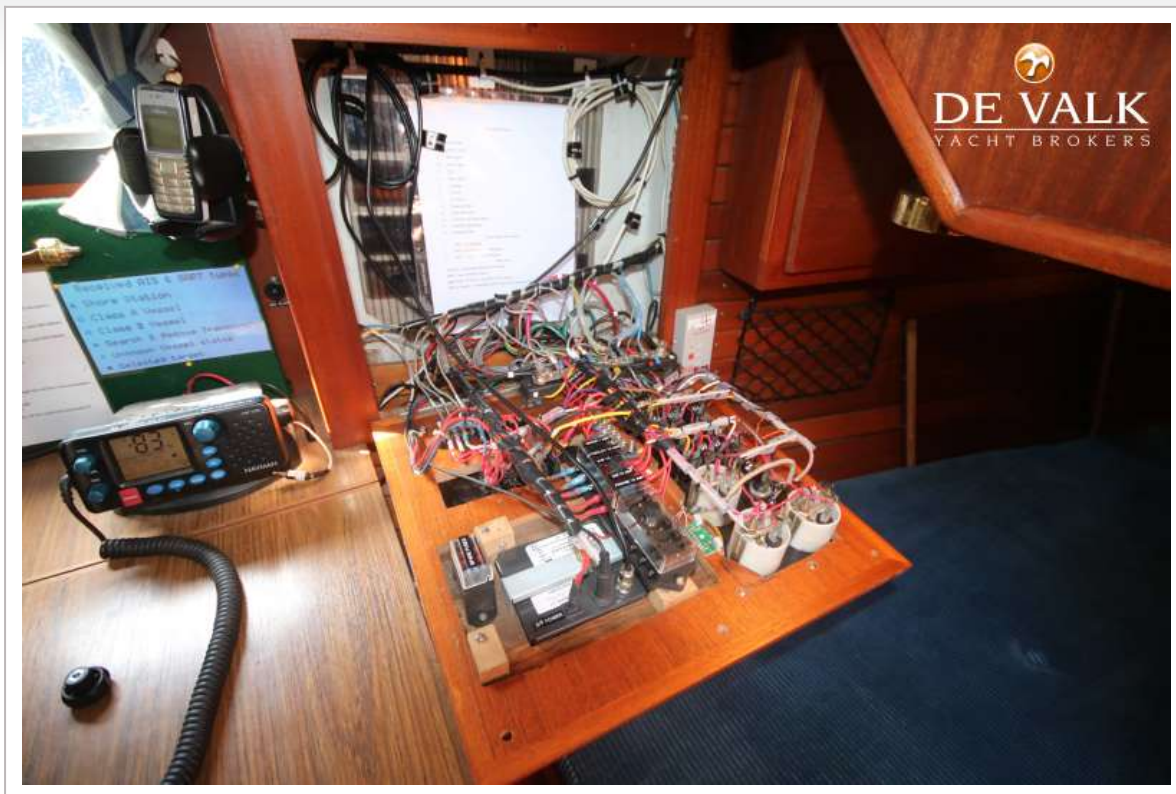
HALLBERG RASSY 312 MKI



HALLBERG RASSY 312 MKI



HALLBERG RASSY 312 MKI



HALLBERG RASSY 312 MKI

