



DE VALK
YACHT BROKERS



HANSE 411



DE VALK
YACHT BROKERS

BROKERAGE | CHARTER | BERTHS | FINANCE | INSURANCE | YACHT MANAGEMENT

BROKER'S COMMENTS

This Hanse 411 is in top condition and has a professional installed dockhouse. She has been equipped with 2 electric winches, a slightly heavier keel and for extra firmness a mast with 3 spreaders. The hull has been repainted in 2016. On deck there are 5 solar panels providing the yacht with all current necessary. This sporty family yacht has a berth in the north of Italy since 2012. For more information, please contact our office in Monnickendam.

Sander van der Voorn

SPECIFICATIONS

Dimensions	12.35 x 4.05 x 1.98 (m)	Builder	Hanse / Greifswald
Built	2005	Cabins	3
Material	GRP	Berths	6
Engine(s)	1 x Yanmar 4JH4E diesel	Hp/Kw	52.00 (hp), 38.22 (kw)
Asking price	sold (VAT)	Lying	elsewhere / Not at sales office

CONTACT

Sales office	De Valk Monnickendam B.V.	Telephone	+31 (0)299 65 63 50
Address	Hoogedijk 6 1145 PM Katwoude NL	E-mail	monnickendam@devalk.nl

DISCLAIMER

These particulars are given in good faith as supplied but cannot be guaranteed.



GENERAL

Model	HANSE 411
Type	sailing yacht
LOA (m)	12,35
LWL (m)	10,90
Beam (m)	4,05
Draft (m)	1,98
Air draft (m)	21,00
Headroom (m)	2,00
Year built	2005
Launched	2005
Builder	Hanse / Greifswald
Country	Germany
Designer	Judel & Vrolijk & Co
Displacement (t)	10
Ballast (tonnes)	lead in steel 3.4
CE norm	A
Hull material	GRP
Hull colour	blue 2016
Hull shape	round-bilged
Keel type	fin keel with bulb
Superstructure material	GRP
Rubbing strake	wood
Deck material	GRP
Deck finish	teak
Superstructure deck finish	non-skid moulded in
Cockpit deck finish	teak
Antifouling (year)	2018
Dorades	stainless steel 2
Window frame	aluminium
Window material	polycarbonate



Deckhatch	4
Fuel tank (litre)	stainless steel 100
Level indicator (fuel tank)	yes
Freshwater tank (litre)	polyethylene 240
Level indicator (freshwater)	yes
Blackwater tank (litre)	stainless steel 60
Blackwater tank extraction	deck extraction + pump
Wheel steering	mechanical
Emergency tiller	yes
Extra info	hull new sprayed/painted with 6 layers International 2016

ACCOMMODATION

Cabins	3
Berths	6
Interior	cherry
Floor	wood
Open cockpit	yes
Doghouse	Professional Custom made
Sliding roof	manual In Doghouse
Heating	diesel ducted hot air
Navigation center	yes
Chart table	yes
Aft Cabin	2 x
Dinette	yes
Galley	yes
Countertop	Duropal
Sink	stainless steel 2
Cooker	calor gas Force 10 !
Oven	Force 10
Fridge	yes
Hot water system	220V + engine Boiler 2018



Water pressure system	electrical
Coffee maker	yes
Owners cabin	double bed
Bed length (m)	2
Wardrobe	hanging/drawers/shelves
Bathroom	separate
Toilet	shared
Toilet system	manual Jabsco
Wash basin	in the bathroom
Shower	shared
Extra info	extra thick mattresses
Guest cabin 1	double bed
Bed length (m)	2
Wardrobe	hanging and shelves
Guest cabin 2	double bed
Bed length (m)	2
Wardrobe	hanging and shelves

MACHINERY

No of engines	1
Make	Yanmar
Type	4JH4E
HP	52,00
kW	38,22
Fuel	diesel
Year installed	2005
Maximum speed (kn)	8
Cruising speed (kn)	7
Consumption (l/hr)	2,5
Engine cooling system	freshwater heat exchanger
Drive	sail-drive



Saildrive seal	full service 2016
Engine controls	bowden cable
Gearbox	mechanical
Bowthruster	electric Vetus
Exhaust	watercooled
Propeller type	folding
Propeller blades	3
Propeller shaft material	stainless steel
Manual bilge pump	yes
Electric bilge pump	yes
Electrical installation	12/220 volt
Start battery	2012
Service battery	3 x 90 Ah 2017
Bowthruster battery	2012
Battery monitor	yes
Battery charger	yes
Solar panel	5
Shorepower	with cable

NAVIGATION

Compass	yes
Electric compass	on autopilot
Depth sounder/log	Simrad
Log	yes
Windset	Simrad
VHF	Shipmate RS8300
Autopilot	Simrad
Radar	Furuno
Plotter	Simrad
AIS receiver	yes
Radio receiver	yes



Navigation lights	yes
Searchlight	yes

EQUIPMENT

Fixed windscreen	yes
Fixed hardtop	yes
Cockpit cover	yes
Bimini	yes
Cockpit cushions	yes
Cockpit table	yes
Boarding ladder	stainless steel
Anchor	Rocna
Anchor chain	75 meter
Anchor 2	Delta
Anchor chain	Rope with lead
Windlass	electrical
Dinghy	rigid inflatable Zyphir
Outboard	Mariner 3.5 HP four stroke petrol 2011
Davits	stainless steel
Davits controls	manual
Sea railing	wire
Grab rail (superstructure)	wood
Railing side opening gates	yes
Pushpit	yes
Pulpit	yes
Life raft	valise (or bag)
Life raft (pers)	6
Last life raft survey	2015
Lifejackets	yes
Radar reflector	yes
Fenders	yes



Mooring lines	yes
Spare parts	yes
Tools	yes
TV	yes
TV receiver	yes
Radio-cd player	yes
DVD player	yes
iPod connection	yes
Cockpit speakers	yes
Speakers in salon	yes
Clock - barometer	yes
Fire extinguisher	yes

RIGGING

Rigging	sloop
Standing rigging	Rod
Brand mast	Sparcraft
Material mast	aluminium
Spreaders	pair 3
Mainsail	yes
Battcars	yes
Fully battened mainsail	partially
High aspect	Self tacking jib installation 33m2
Gennaker	yes
Self tacking jib installation	yes
Reefing System	quick-one-line-reefing
Backstay adjuster	tackle
Boomvang	gasspring
Primary sheet winch	electric 2 x Harken 42
Genoa sheetwinches	2 x Harken 45
Spi-pole	aluminium



Gennaker pole

aluminium

Extra info

spinnaker and gennaker pole is one, extendable



HANSE 411





HANSE 411

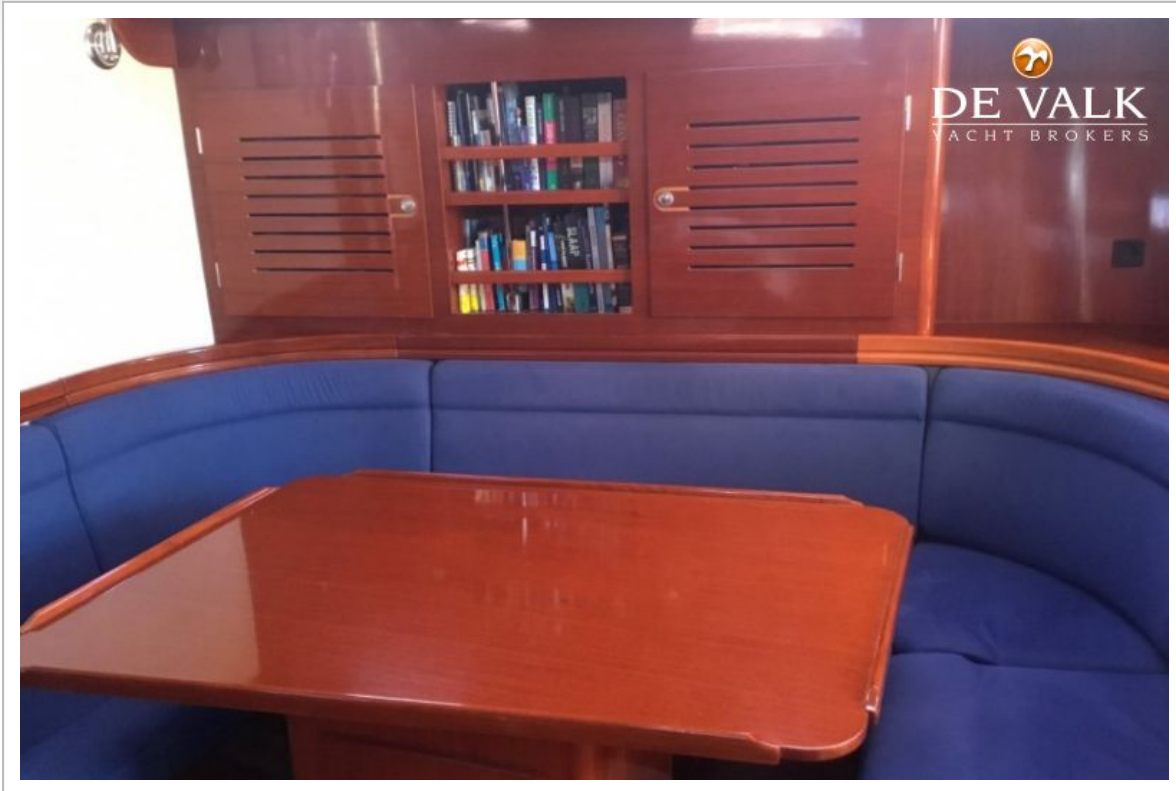


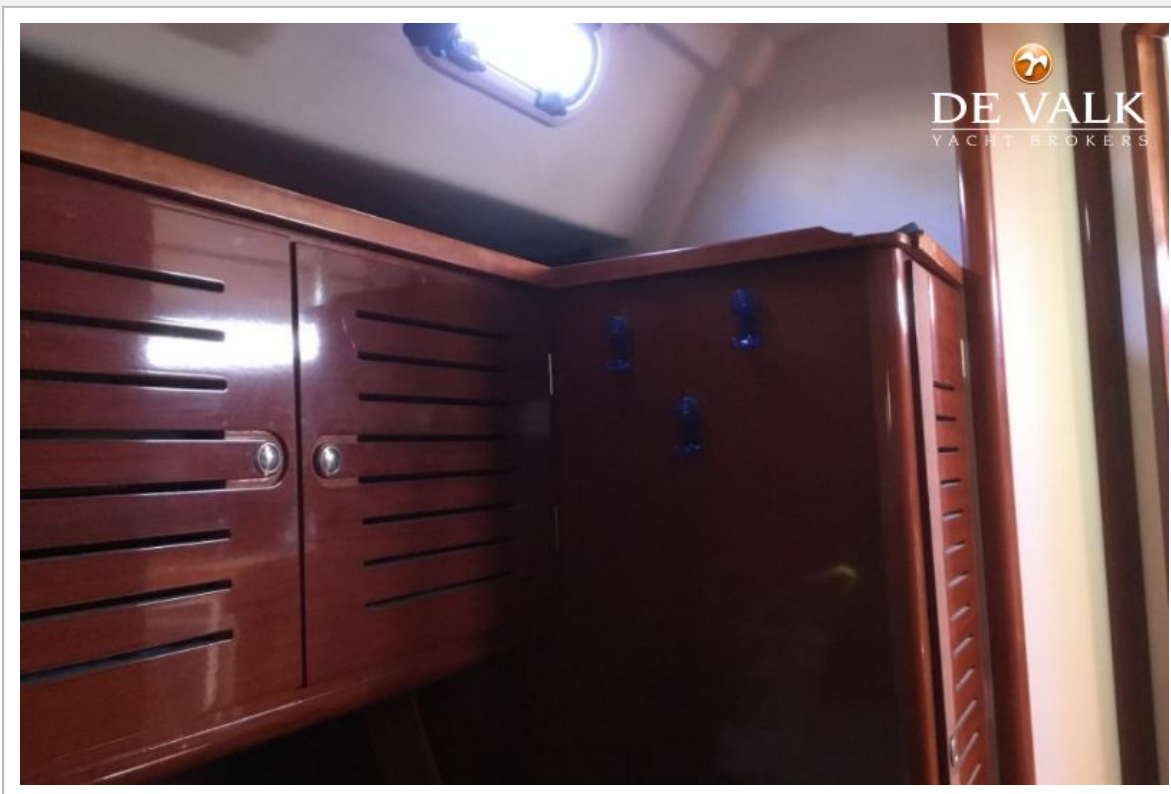
HANSE 411





HANSE 411





HANSE 411

