



DE VALK
YACHT BROKERS



DEHLER 29



DE VALK
YACHT BROKERS

BROKERAGE | CHARTER | BERTHS | FINANCE | INSURANCE | YACHT MANAGEMENT

BROKER'S COMMENTS

Designed as a small cruiser, day-sailer and or club racer, the Dehler 29 is certainly versatile. She was Germans Yacht of the Year, Designed by top designers Judel & Vrolijk, she has that modern angular look with her straight bow. Well equipped and well maintained by her first owner, she gives good value for one's money and certainly a lot of fun using her where she belongs; on the water! Just 275 engine hours!

Sander van der Voorn

SPECIFICATIONS

Dimensions	8.75 x 2.99 x 1.58 (m)	Builder	Dehler Yachtbau GmbH
Built	2007	Cabins	2
Material	GRP	Berths	4
Engine(s)	1 x Volvo Penta D1-13B diesel	Hp/Kw	12.24 (hp), 9.00 (kw)
Asking price	sold (VAT)	Lying	at sales office

CONTACT

Sales office	De Valk Monnickendam B.V.	Telephone	+31 (0)299 65 63 50
Address	Hoogedijk 6 1145 PM Katwoude NL	E-mail	monnickendam@devalk.nl

DISCLAIMER

These particulars are given in good faith as supplied but cannot be guaranteed.



GENERAL

Model	DEHLER 29
Type	sailing yacht
LOA (m)	8,75
LWL (m)	7,85
Beam (m)	2,99
Draft (m)	1,58
Air draft (m)	14,05
Headroom (m)	1,84
Year built	2007
Builder	Dehler Yachtbau GmbH
Country	Germany
Designer	Judel & Vrolijk
Displacement (t)	3
Ballast (tonnes)	cast iron and lead 1,120
CE norm	B
Hull material	GRP
Hull colour	blue RAL 5004
Hull shape	round-bilged
Keel type	bulb keel
Superstructure material	GRP
Rubbing strake	rubber
Deck material	GRP
Deck finish	non-skid moulded in
Superstructure deck finish	non-skid moulded in
Cockpit deck finish	non-skid moulded in
Window frame	aluminium
Window material	polycarbonate
Deckhatch	2
Fuel tank (litre)	stainless steel 63
Level indicator (fuel tank)	yes



Freshwater tank (litre)	polyethylene 100
Tiller	with extension 2018

ACCOMMODATION

Cabins	2
Berths	4
Interior	mahogany Mat
Floor	teak and holly
Open cockpit	yes
Saloon	yes
Headroom saloon (m)	1,84
Heating	diesel ducted hot air Webasto airtop 2000
Chart table	yes
Aft Cabin	yes
Dining room	yes
Sliding door to cockpit	System Dehler
Galley	yes
Countertop	corian
Sink	stainless steel
Cooker	calor gas
Fridge	Waeco SB 36 36 liter
Water pressure system	electrical
Owners cabin	double bed
Bed length (m)	2,10 x 1,50
Wardrobe	shelves
Bathroom	separate
Toilet	shared
Toilet system	manual Jabsco
Guest cabin 1	v-bed
Bed length (m)	2,00 x 1,40



MACHINERY

No of engines	1
Make	Volvo Penta
Type	D1-13B
HP	12,24
kW	9,00
Fuel	diesel
Year installed	2007
Engine hours	274
Engine cooling system	freshwater heat exchanger
Drive	sail-drive
Saildrive seal	yes
Engine controls	bowden cable
Gearbox	mechanical
Manual bilge pump	yes
Start battery	1 x 12v 55Ah
Service battery	1 x 12v 95Ah
Battery charger	Mastervolt 12v /25-3
Shorepower	with cable

NAVIGATION

Compass	Suunto B116 sail
Depth sounder/log	Raymarine ST60+ tridata
Windset	Raymarine ST60 wind
Autopilot	Raymarine ST2000+
Plotter	yes
Navigation lights	+ Tri colour toplight

EQUIPMENT

Sprayhood	Nautex 583
-----------	------------



Boarding ladder	stainless steel
Anchor	Danforth
Sea railing	wire
Fenders	yes
Mooring lines	yes
Radio-cd player	JVC
Speakers in salon	yes

RIGGING

Rigging	sloop 7/8
Standing rigging	Rod
Brand mast	Seldén
Material mast	aluminium
Spreaders	pair
Mainsail	26 m2 Dacron 310
Mainsail cover	Dehler maindrop system
Battcars	yes
Fully battened mainsail	yes
High aspect	105% 19 m2 270Dacron 310
Genoa furler	Furlex 100S
Genoa cover	Nautex 587
Primary sheet winch	Harken HB 32
Genoa sheetwinches	Harken HB 32



DEHLER 29





DEHLER 29





DEHLER 29

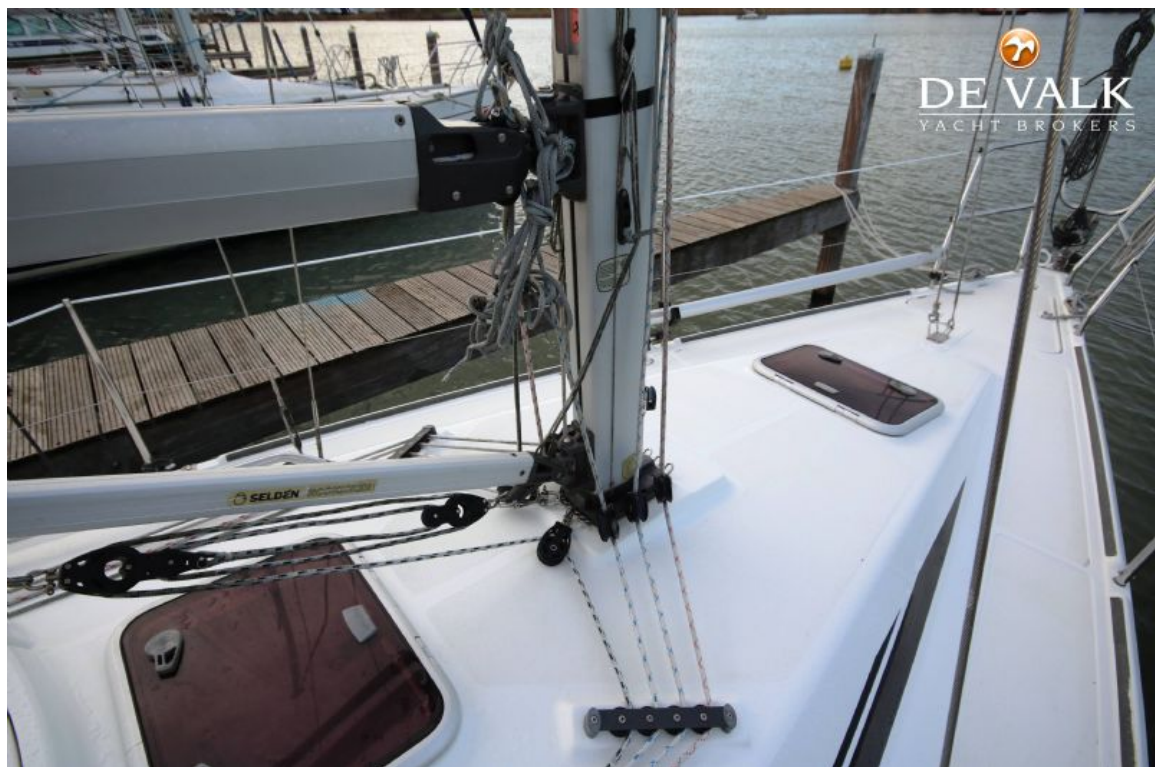


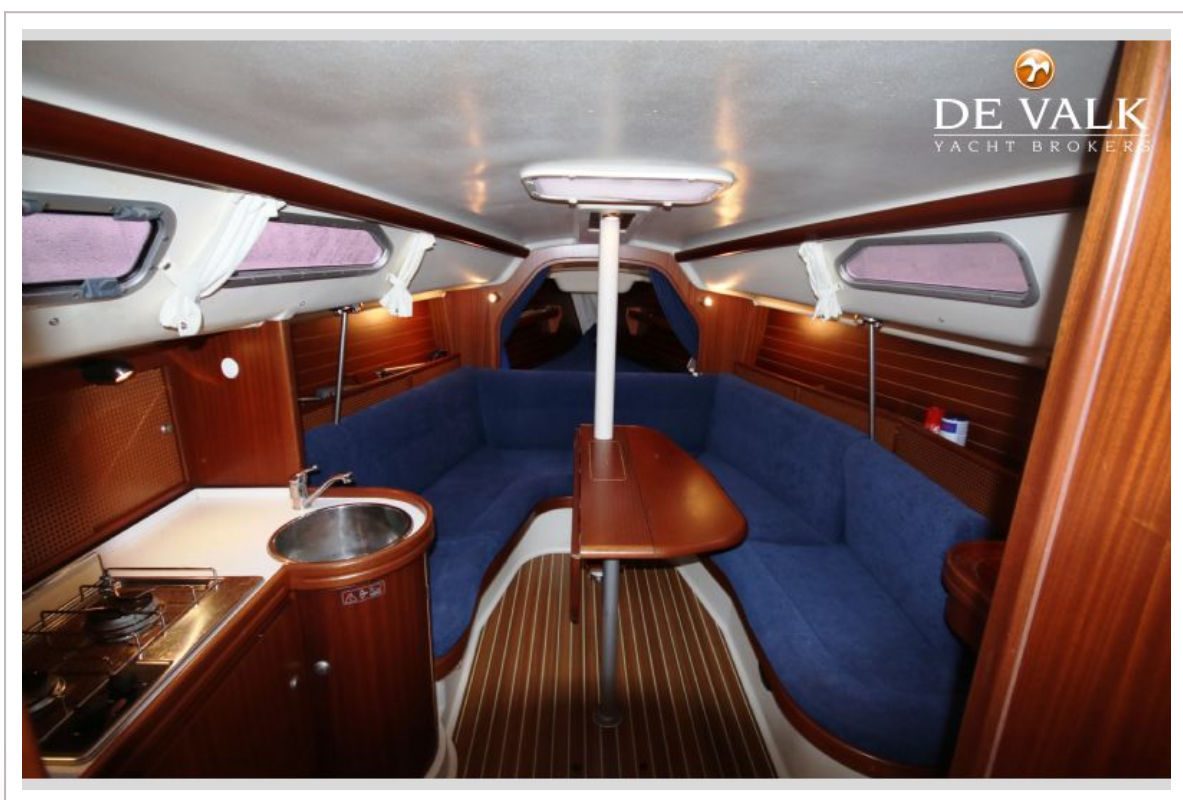






DEHLER 29





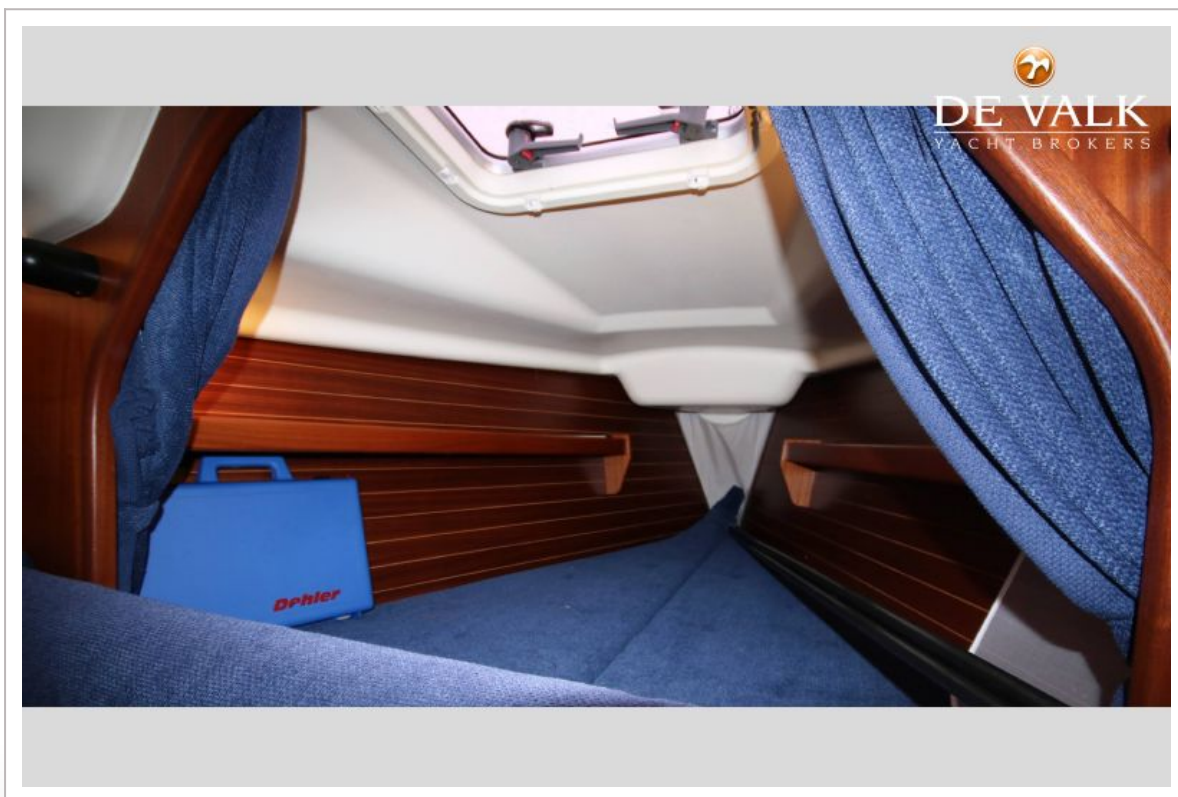
DEHLER 29

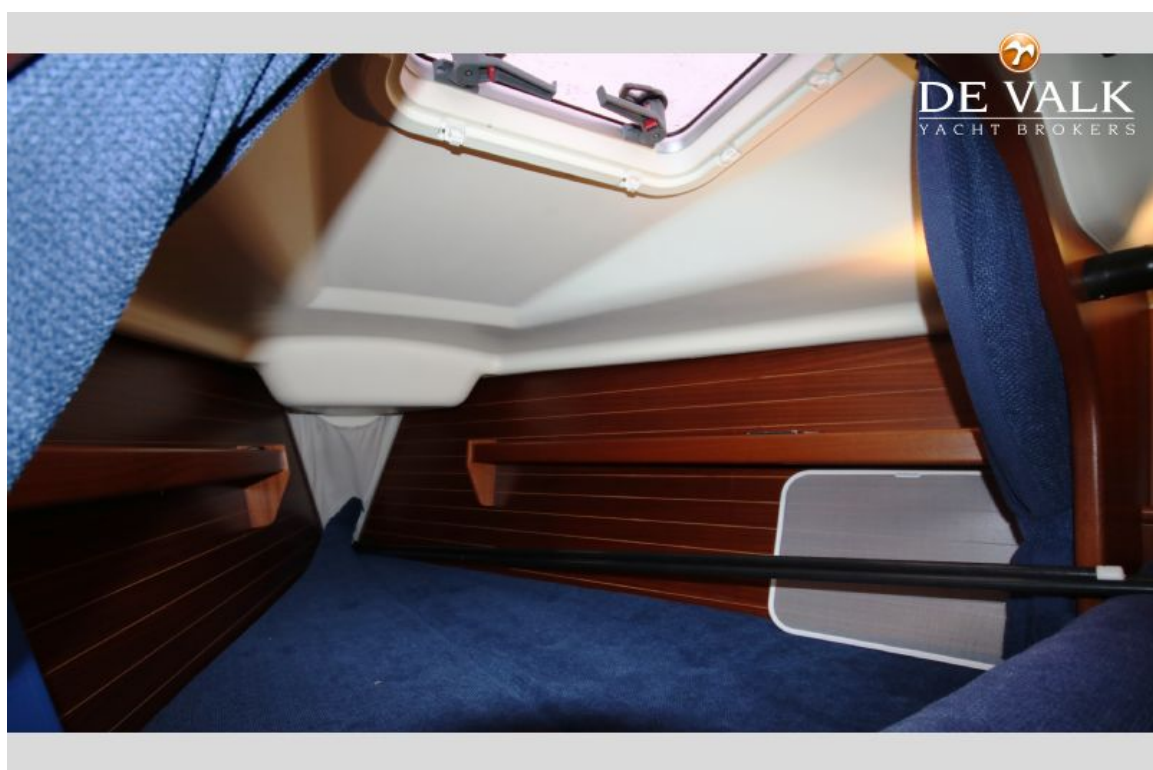


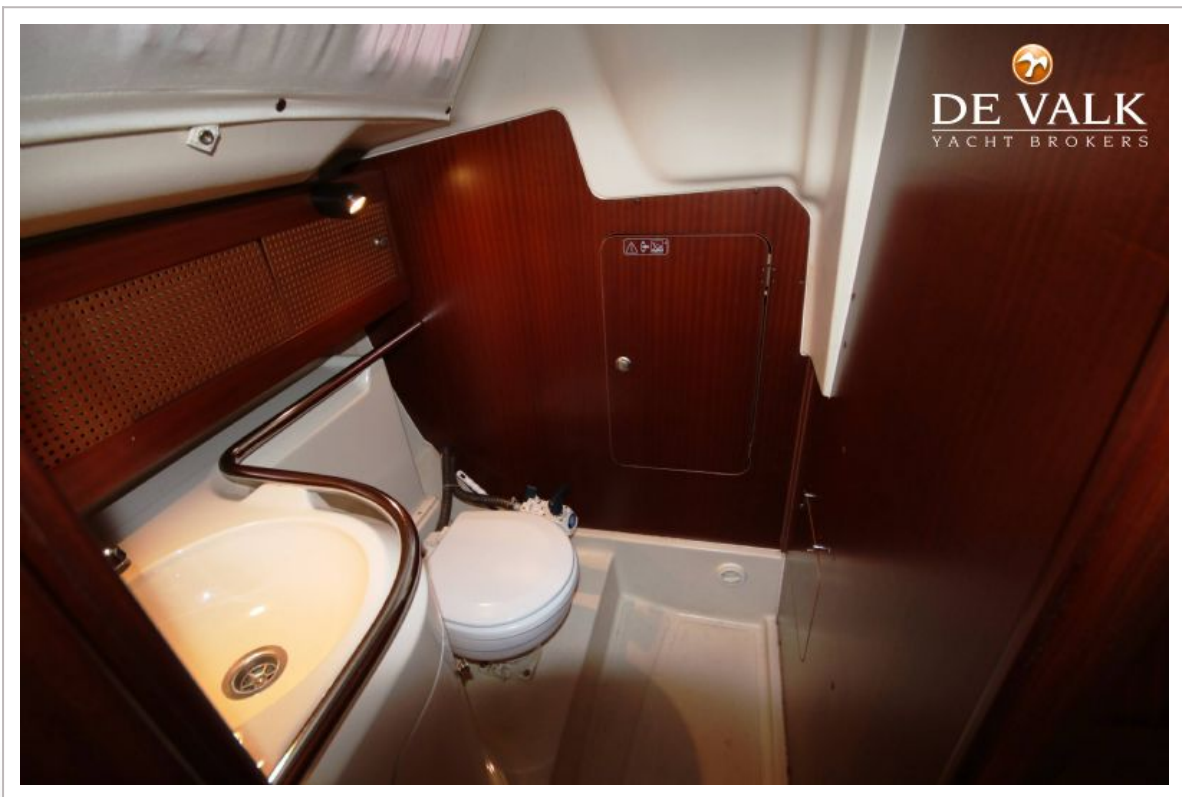
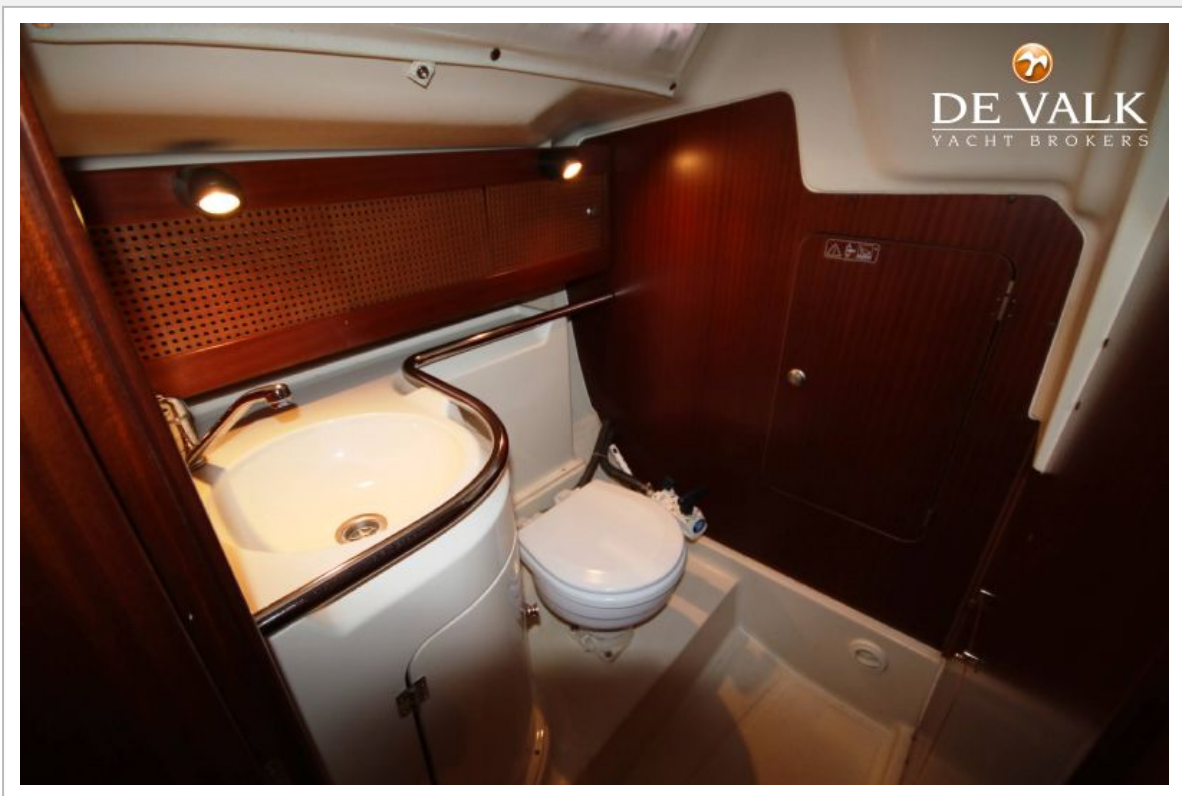
DEHLER 29

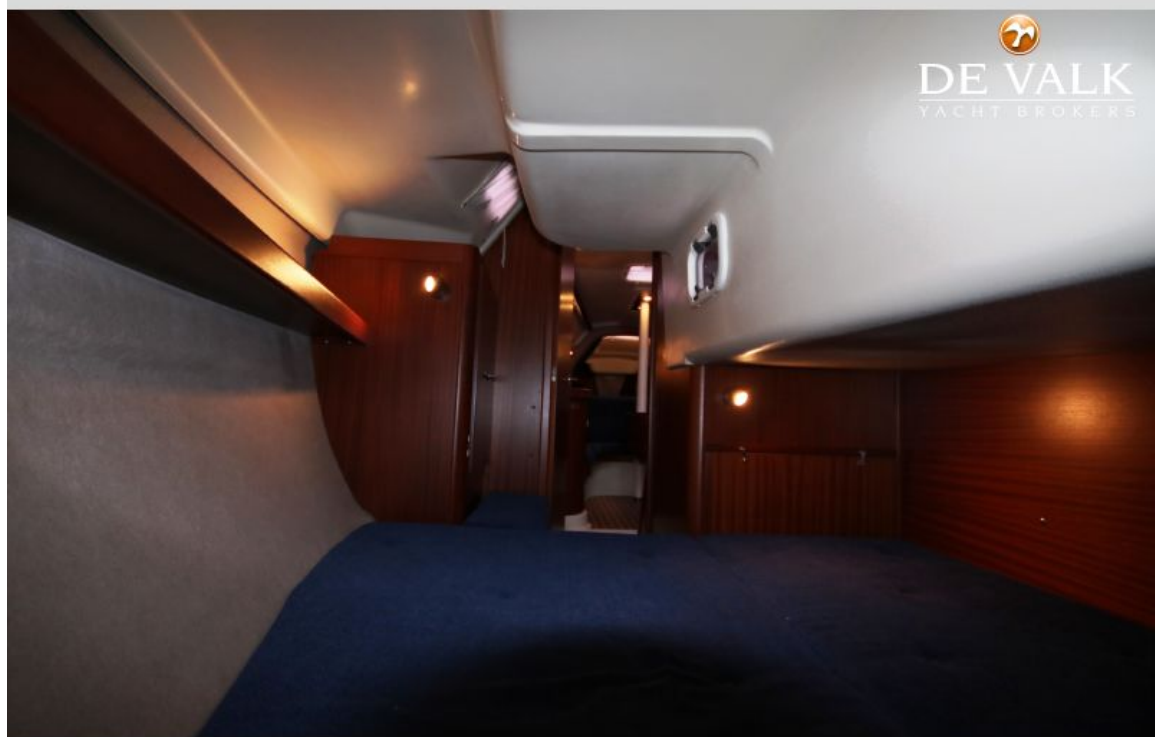
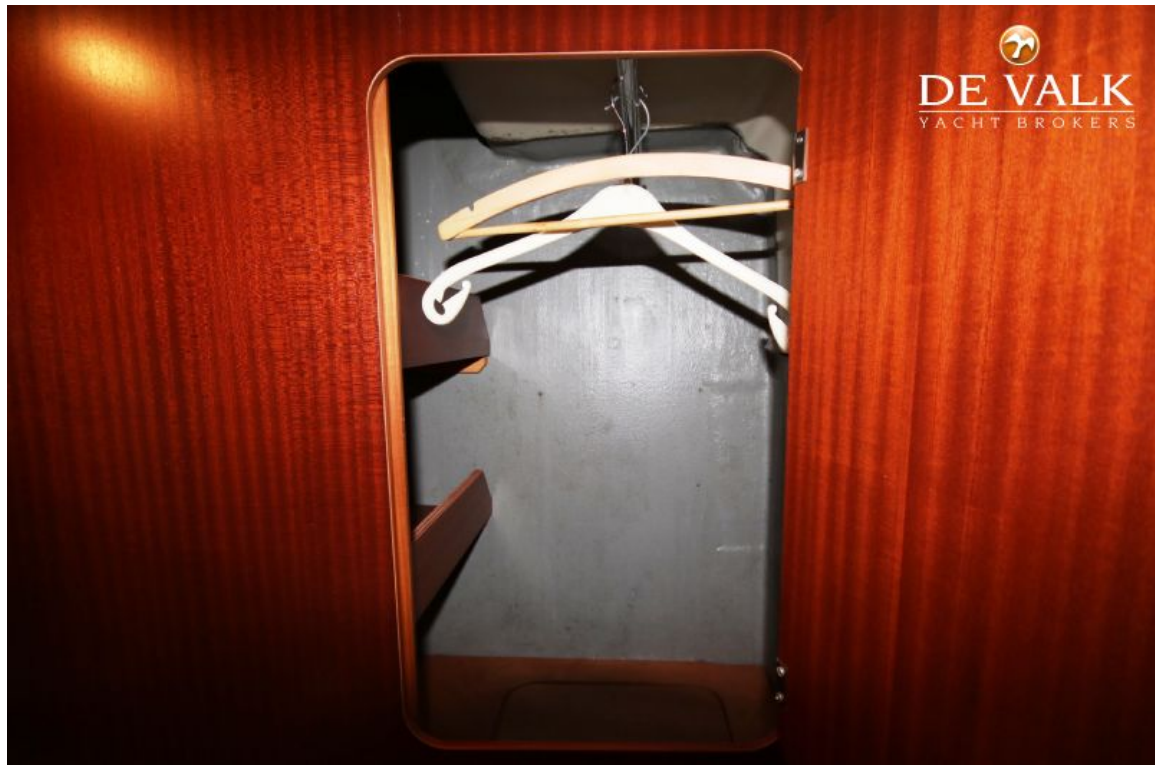


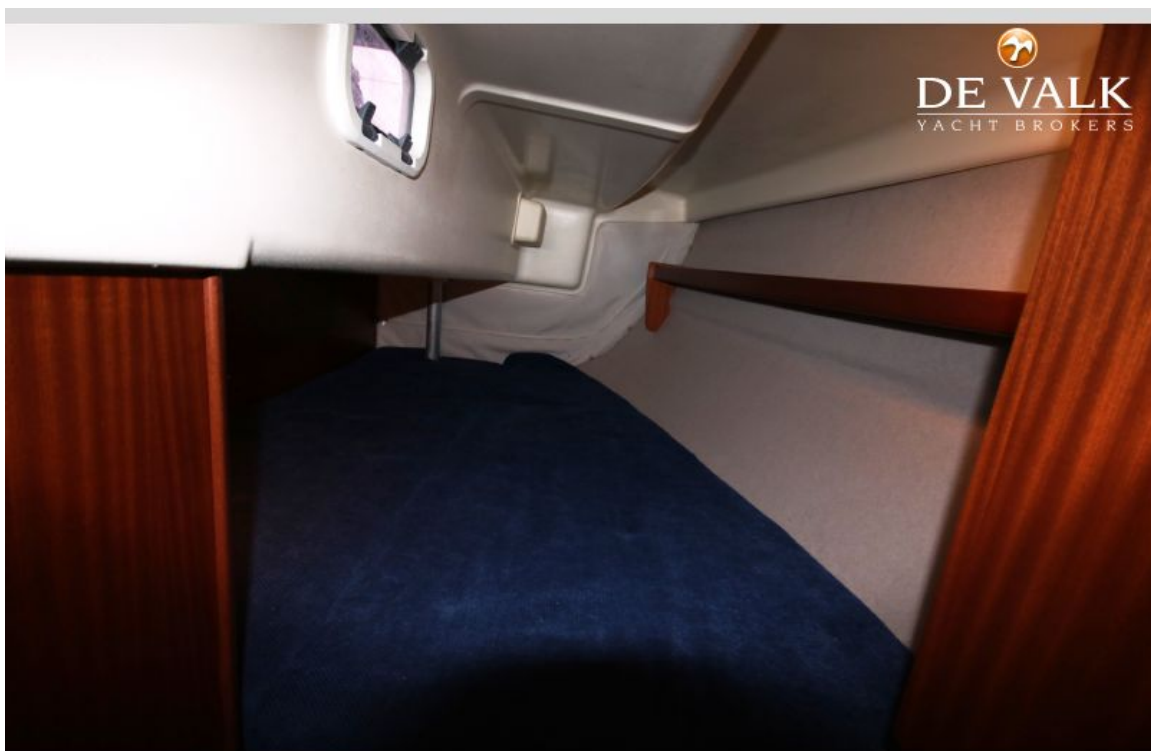
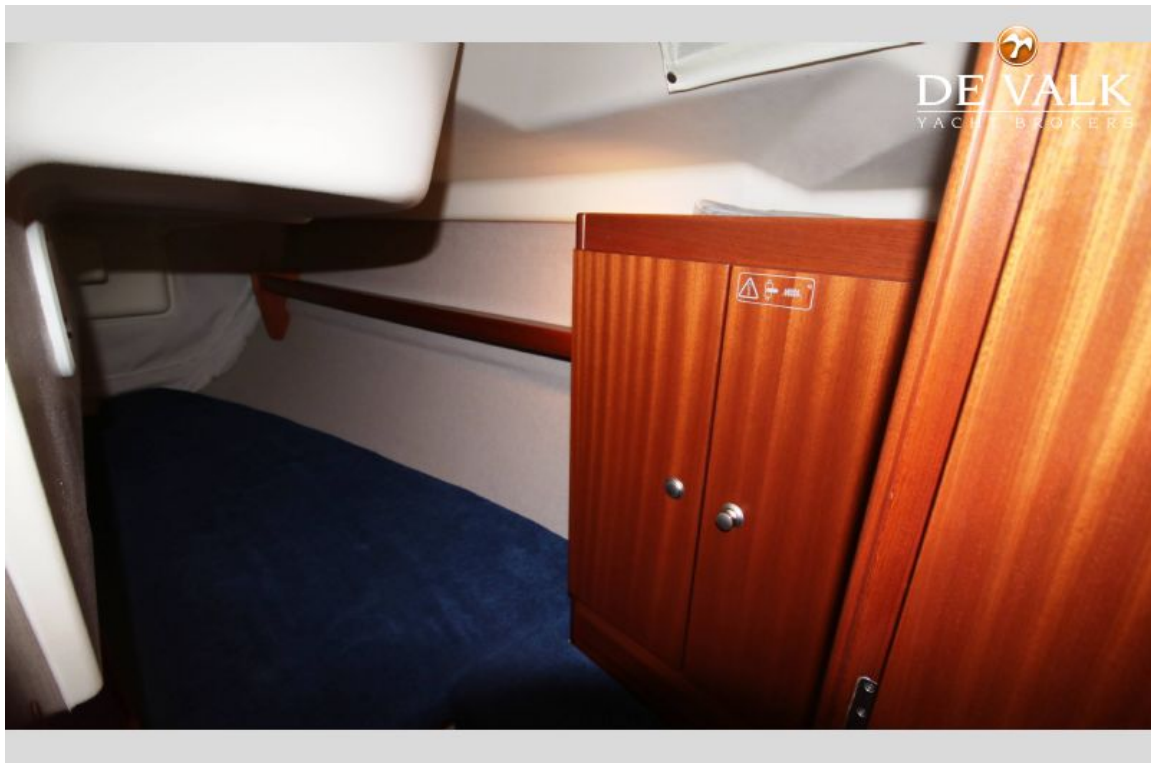
DEHLER 29

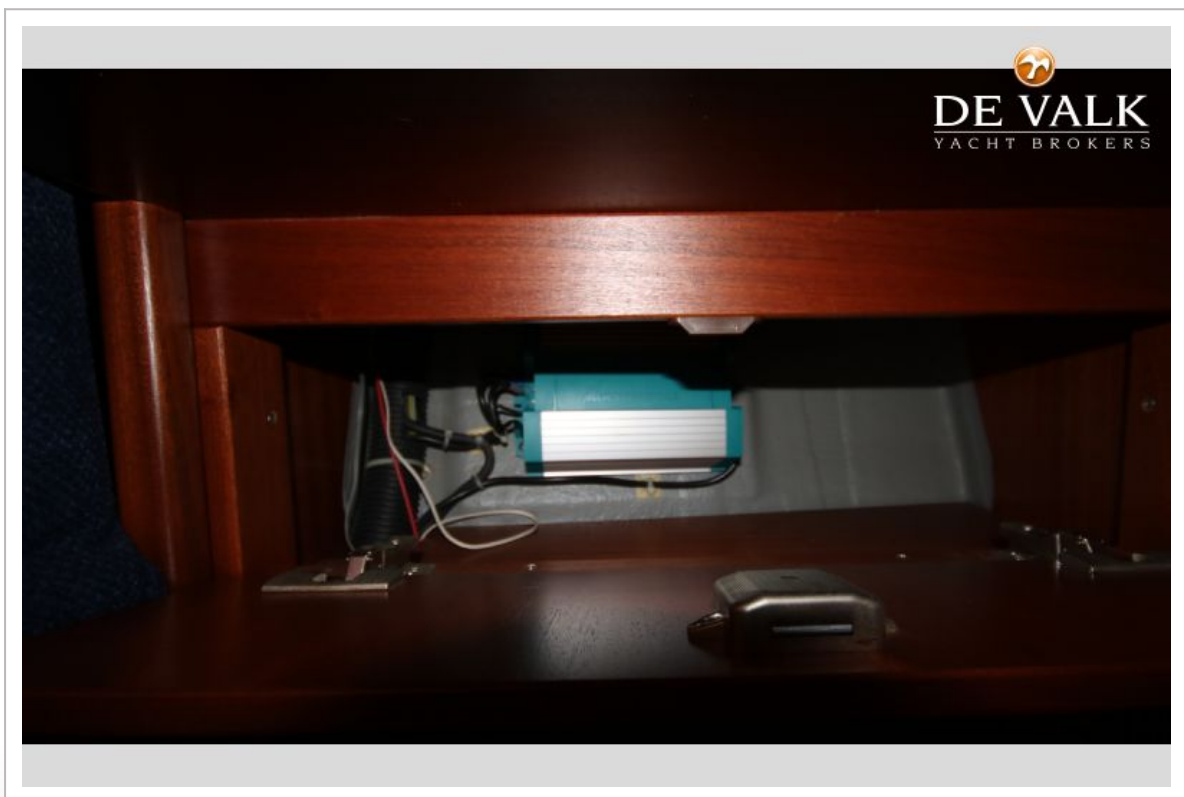












DEHLER 29

