



C-YACHT 1040

C-YACHT 1040

BROKER'S COMMENTS

Are you searching for an immaculate maintained blue water cruiser? Don't look any further. This C-Yacht 10.40 with her deep keel, offers you excellent sailing performance, safety, luxury and comfort. The spacious interior is designed for short and long holidays and is unique in it's class. The efficient galley has a huge amount of space. Also the owner's and front cabin are surprisingly large with ample storage possibilities. This C-Yacht is without a doubt ready to go. Come over to our sales marina in Katwoude / Monnickendam for a personal inspection. You won't be disappointed.

Reinier van der Wolf

SPECIFICATIONS

Dimensions	10.40 x 3.47 x 1.75 (m)	Builder	Jachtwerf Zaadnoordijk Yachtbuilders
Built	2003	Cabins	2
Material	GRP	Berths	6
Engine(s)	1 x Yanmar 3GM30 diesel	Hp/Kw	27.00 (hp), 19.85 (kw)
Asking price	sold (VAT)	Lying	at sales office

CONTACT

Sales office	De Valk Monnickendam B.V.	Telephone	+31 (0)299 65 63 50
Address	Hoogedijk 6 1145 PM Katwoude NL	E-mail	monnickendam@devalk.nl

DISCLAIMER

These particulars are given in good faith as supplied but cannot be guaranteed.



GENERAL

Model	C-YACHT 1040
Type	sailing yacht
LOA (m)	10,40
LWL (m)	8,30
Beam (m)	3,47
Draft (m)	1,75
Air draft (m)	16,00
Headroom (m)	1,90
Year built	2003
Builder	Jachtwerf Zaadnoordijk Yachtbuilders
Country	The Netherlands
Designer	Frans Maas
Displacement (t)	5,5
Ballast (tonnes)	lead 2,2
CE norm	A
Hull material	GRP
Hull colour	white
Hull shape	round-bilged
Keel type	fin keel
Superstructure material	GRP
Rubbing strake	rubber
Deck material	GRP
Deck finish	TBS non-skid profile mats
Superstructure deck finish	non-skid paint
Cockpit deck finish	teak
Antifouling (year)	chloride-rubber 2018
Dorades	2 X
Window frame	aluminium
Window material	tempered glass
Deckhatch	3 X



Portholes	aluminium
Fuel tank (litre)	stainless steel 100
Level indicator (fuel tank)	Wema
Freshwater tank (litre)	polyethylene 200
Level indicator (freshwater)	Wema
Blackwater tank (litre)	polyethylene 60
Level indicator (blackwater)	Wema
Blackwater tank extraction	deck extraction + uw line
Wheel steering	mechanical Jefa
Emergency tiller	yes
Extra info	several portholes have mosquito net inserts.

ACCOMMODATION

Cabins	2
Berths	6
Interior	teak
Floor	teak and holly
Saloon	yes
Headroom saloon (m)	1,90
Heating	calorgas ducted hot air Trumatic-E 4000
Navigation center	yes
Chart table	yes
Aft Cabin	yes
Dinette	yes
Galley	yes
Countertop	plastic
Sink	stainless steel 2 X
Cooker	calor gas 3-burner
Oven	yes
Gas alarm	yes
Fridge	12V



Water pressure system	electrical
Owners cabin	double bed
Bed length (m)	2.00 X 1.50
Wardrobe	hanging and shelves
Bathroom	separate
Toilet	shared
Toilet system	manual
Wash basin	in the bathroom
Extra info	matress with slatted bottom
Guest cabin 1	v-bed
Bed length (m)	2.15 X 1.80 / 0.40
Wardrobe	hanging and shelves
Extra info	Hatch shades + front cabin windows

MACHINERY

No of engines	1
Make	Yanmar
Type	3GM30
HP	27
kW	19,85
Fuel	diesel
Year installed	2003
Maximum speed (kn)	7,5
Cruising speed (kn)	6
Consumption (l/hr)	3
Engine hours	614
Engine cooling system	freshwater heat exchanger
Drive	sail-drive
Saildrive seal	new 2016
Engine controls	bowden cable
Gearbox	Yanmar



Manual bilge pump	yes
Electric bilge pump	yes
Electrical installation	12/220V
Start battery	12V / 62Ah
Service battery	12V / 150Ah
Battery monitor	Wema
Battery charger	Mastervolt IVO Smart 12/40
Shorepower	with cable

NAVIGATION

Compass	Plastimo
Depth sounder	Raymarine ST60
Log	Raymarine ST60
Windset	Raymarine ST60
VHF	Shipmate RS8300
GPS	Furuno GPS / Waas Navigator GP-32
Plotter	Raymarine Raynav 300
Navigation lights	yes

EQUIPMENT

Fixed windscreen	with 1 opening window
Sprayhood	De Vries
Cockpit cover	cockpit tent can be split into two parts De Vries
Winter cover	3 part with mast up
Cockpit table	yes
Anchor	Bruce
Anchor chain	yes
Windlass	manual Simpson Lawrence
Sea railing	wire
Grab rail (superstructure)	teak
Pushpit	yes



Pulpit	yes
Radar reflector	Tri-lens
Fenders	yes
Mooring lines	yes
Radio-cd player	+ 12-disc changer JVC KD-SX921R
Speakers in salon	2 X
Fire extinguisher	3 X
Extra info	Stainless Steel bow step with teak inlay

RIGGING

Rigging	fractional
Standing rigging	wire Original
Brand mast	Seldén
Material mast	aluminium
Spreaders	2 x
Mainsail cover	yes
Battcars	yes
Fully battened mainsail	UK De Vries 2018
High aspect	UK De Vries 2017
Genoa III	UK De Vries 2003
Genoa furler	Furlex
Reefing System	slabreefing
Backstay adjuster	mechanical
Boomvang	mechanical and tackle
Genoa sheetwinches	2 x Andersen 40 ST Two-Speed
Halyard winches	2 x Andersen 12 ST Single-Speed
Extra info	Furler drum cover for winter



C-YACHT 1040



C-YACHT 1040



C-YACHT 1040



C-YACHT 1040



C-YACHT 1040



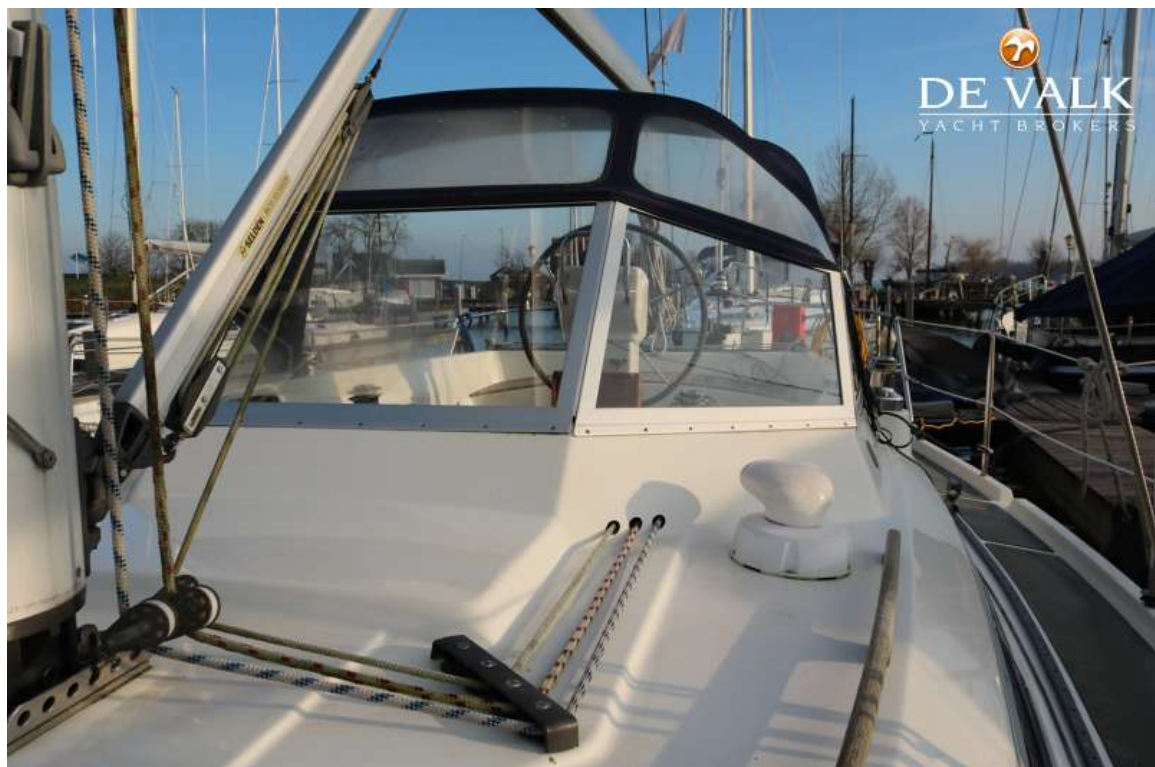
C-YACHT 1040



C-YACHT 1040



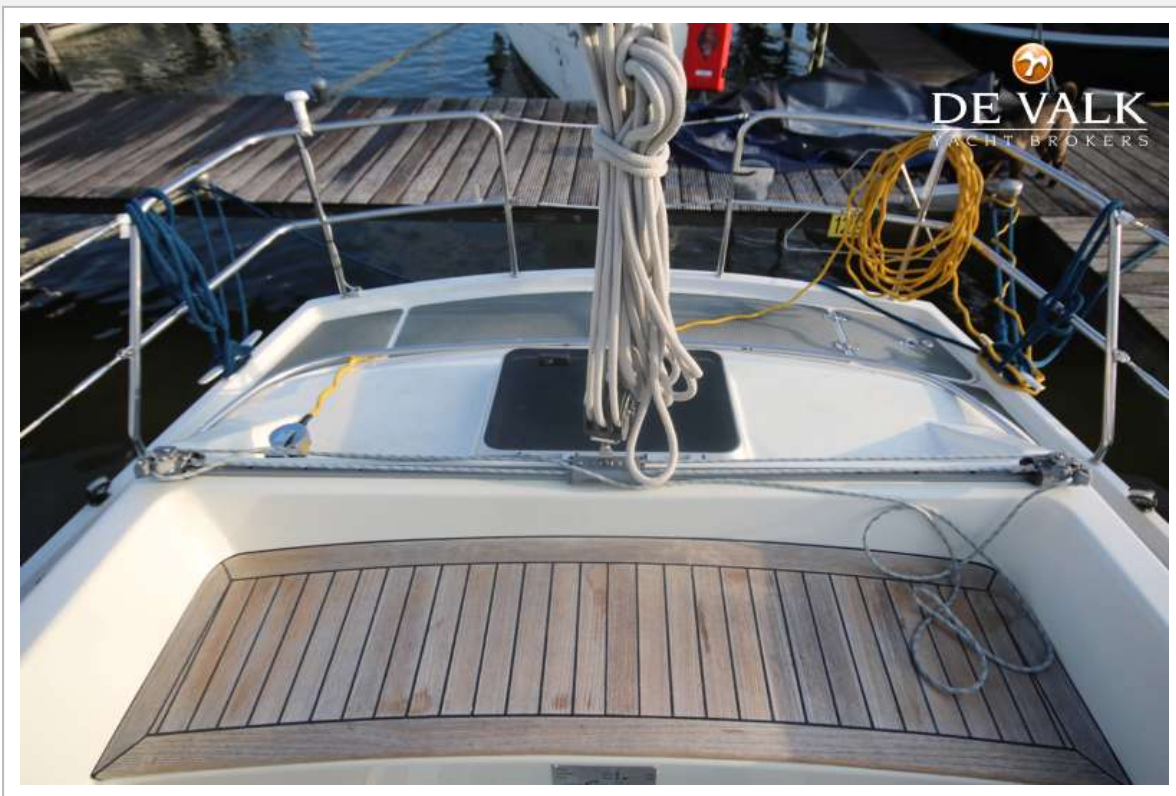
C-YACHT 1040



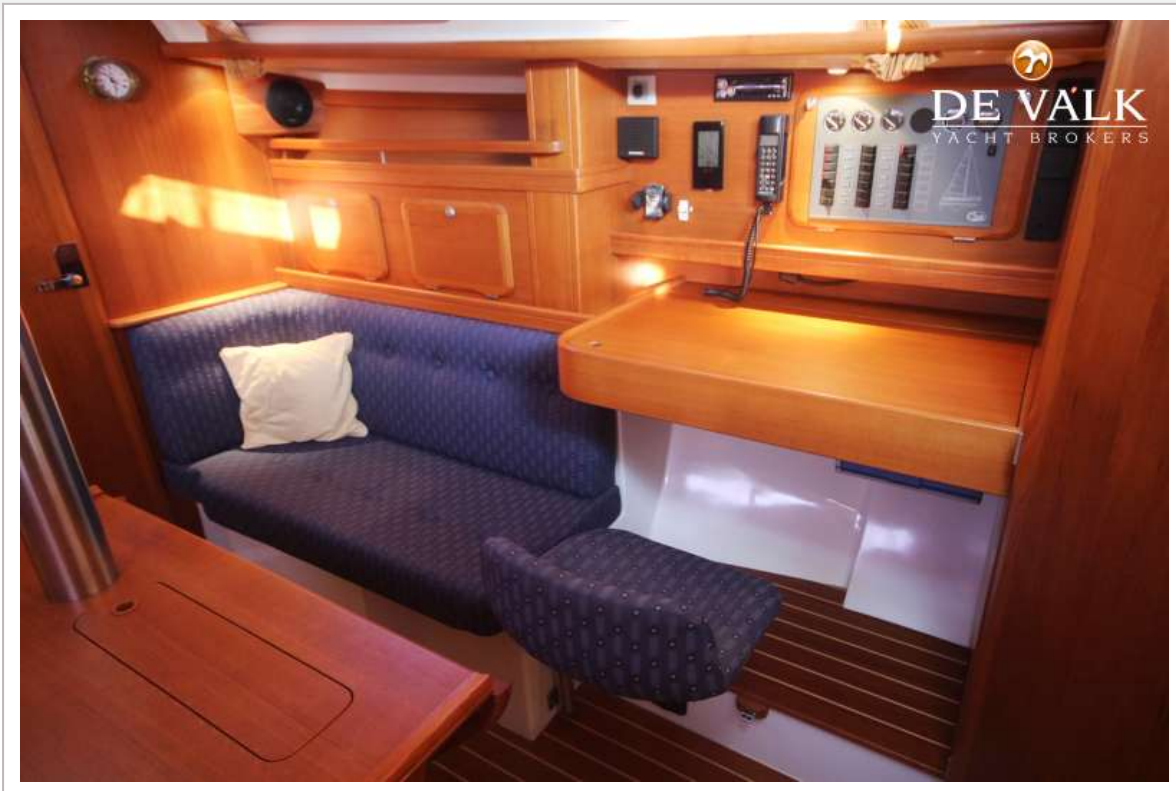
C-YACHT 1040



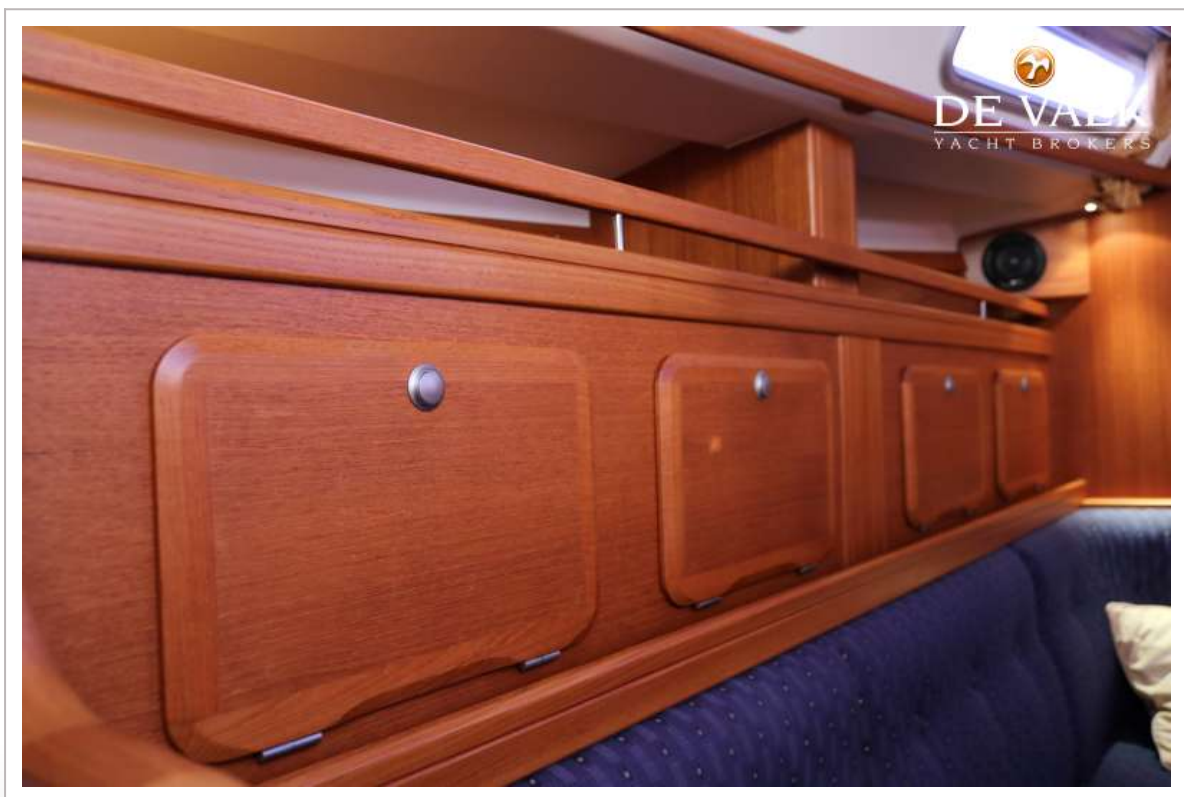
C-YACHT 1040



C-YACHT 1040



C-YACHT 1040



C-YACHT 1040



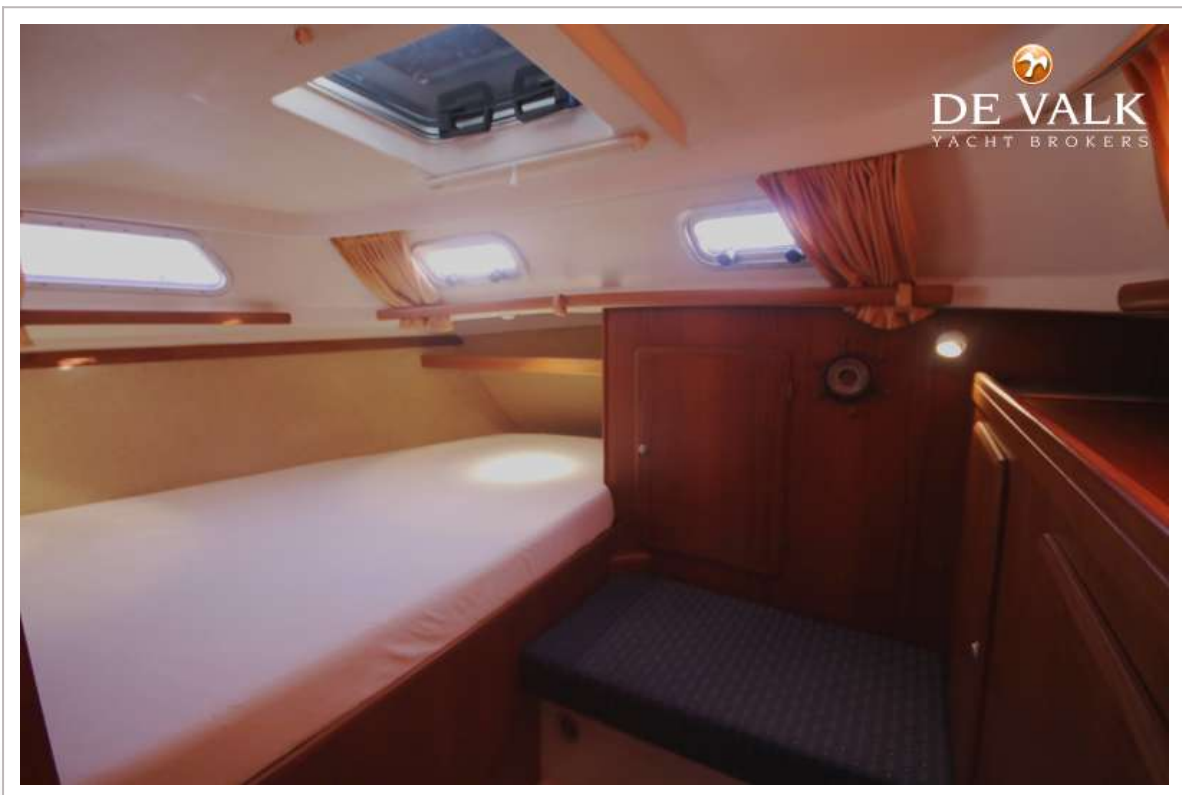
C-YACHT 1040



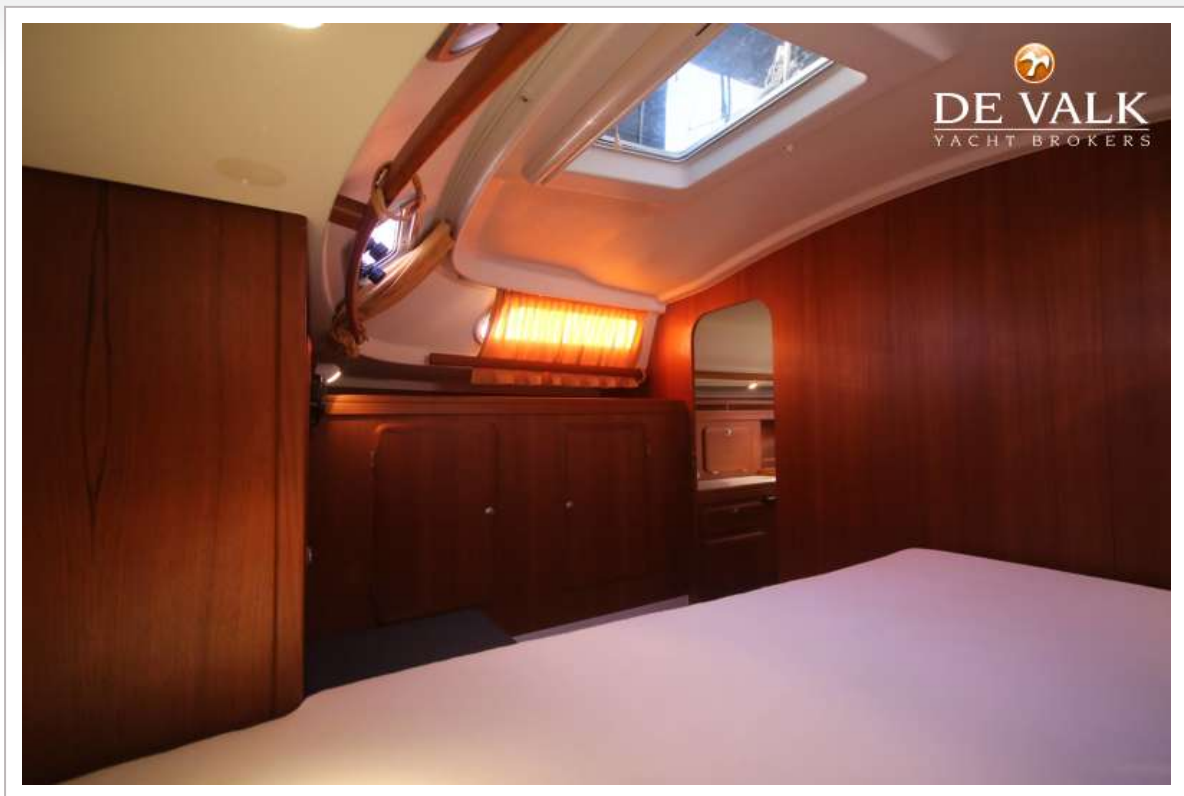
C-YACHT 1040



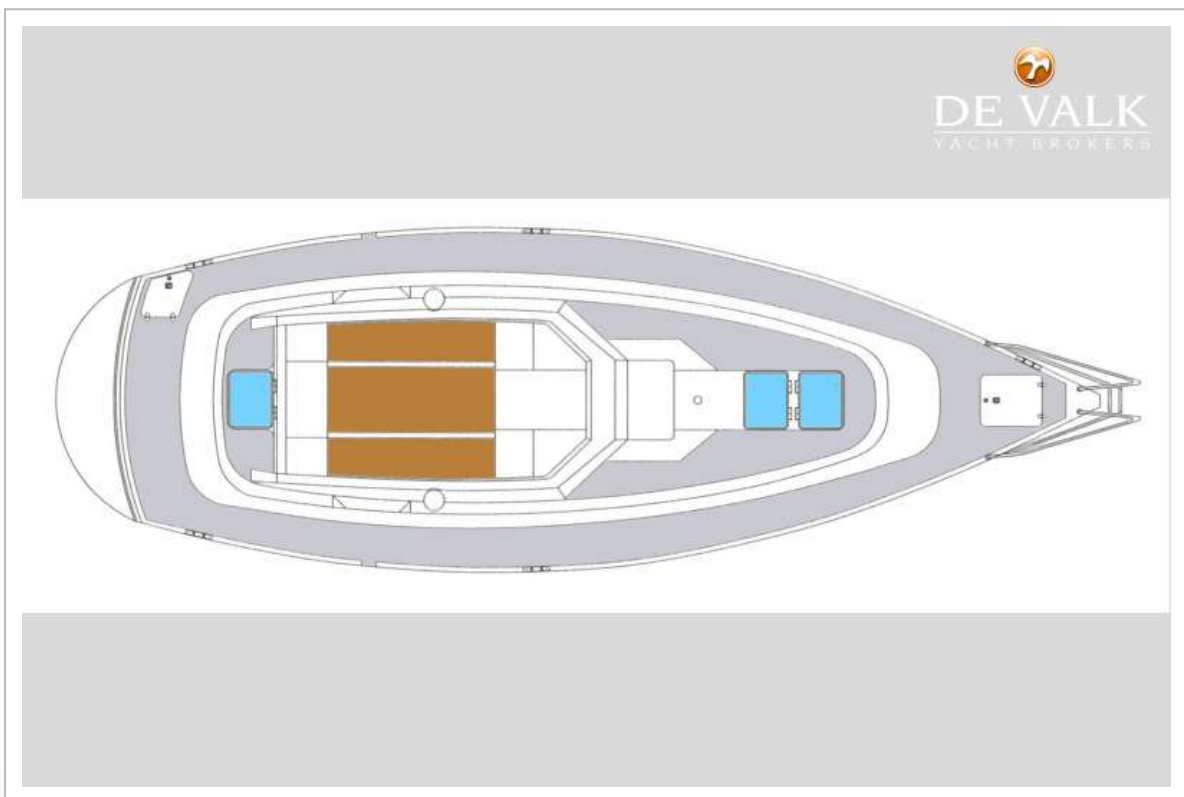
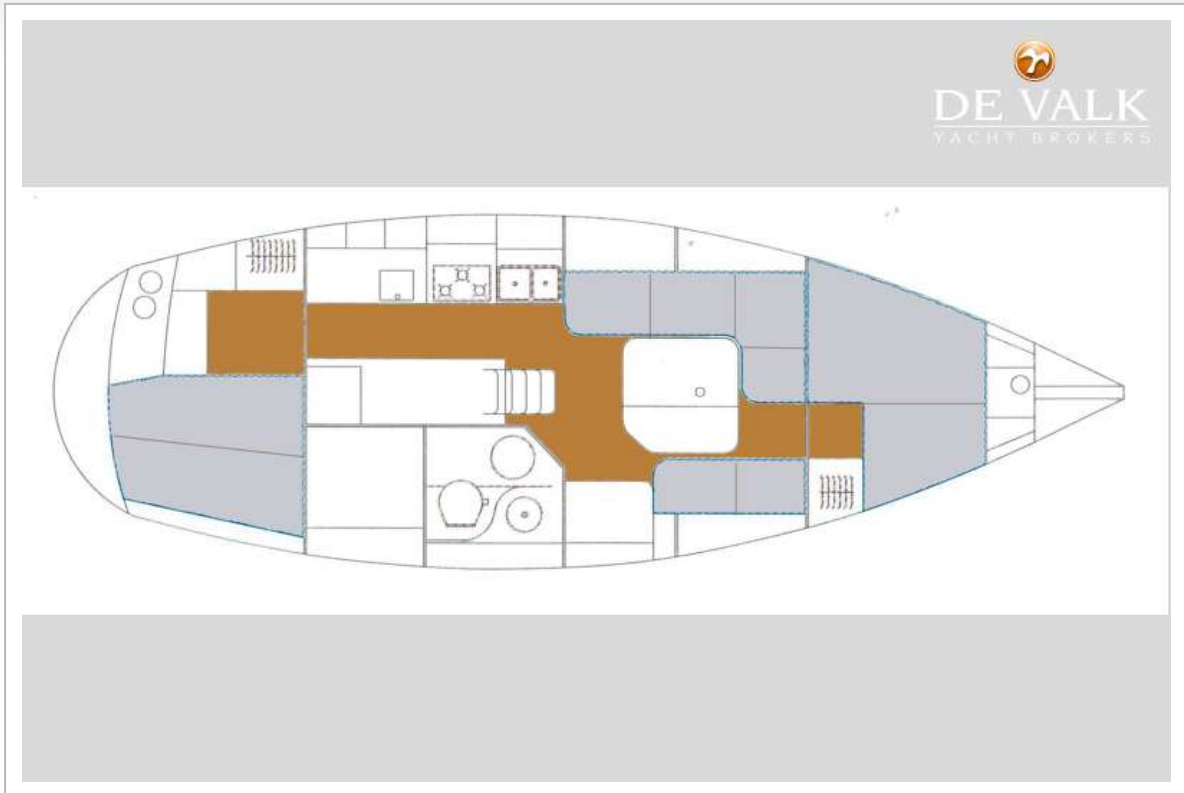
C-YACHT 1040



C-YACHT 1040



C-YACHT 1040



C-YACHT 1040

