



DE VALK
YACHT BROKERS



HALLBERG RASSY 352 SCANDINAVIA



DE VALK
YACHT BROKERS

HALLBERG RASSY 352 SCANDINAVIA

BROKER'S COMMENTS

Introduced in 1979 as the yacht for the future, the HR 352 is probably the most successful model of the famous Swedish yard. The much appreciated Swedish craftsmanship and quality remains plus seaworthy, sturdy and well balanced design by Olle Enderlein. Below decks non compromising accommodations for family and friends. The inside woodwork has been kept nicely and a third ownership carefully handled. A yacht that will bring her crew safely to any port of call. Become part of the Hallberg Rassy family, you will like it.

Reinier van der Wolf

SPECIFICATIONS

Dimensions	10.54 x 3.38 x 1.67 (m)	Builder	Hallberg-Rassy Varvs AB, Ellös
Built	1988	Cabins	2
Material	GRP	Berths	7
Engine(s)	1 x Volvo Penta 2003T diesel	Hp/Kw	43.00 (hp), 31.61 (kw)
Asking price	sold (VAT)	Lying	at sales office

CONTACT

Sales office	De Valk Monnickendam B.V.	Telephone	+31 (0)299 65 63 50
Address	Hoogedijk 6 1145 PM Katwoude NL	E-mail	monnickendam@devalk.nl

DISCLAIMER

These particulars are given in good faith as supplied but cannot be guaranteed.



HALLBERG RASSY 352 SCANDINAVIA

GENERAL

Model	HALLBERG RASSY 352 SCANDINAVIA
Type	sailing yacht
LOA (m)	10,54
LWL (m)	8,70
Beam (m)	3,38
Draft (m)	1,67
Air draft (m)	16,80
Headroom (m)	1,86
Year built	1988
Builder	Hallberg-Rassy Varvs AB, Ellös
Country	Sweden
Designer	Christoph Rassy / Olle Enderlein
Displacement (t)	6,7
Ballast (tonnes)	cast iron Moulded in and completely protected in GRP.
CE norm	NA
Hull material	GRP
Hull colour	white Marina blue decoration strip above the rubbing strake.
Hull thickness (mm)	GRP-sandwich construction 25 mm with polyvinyl cellular plastics
Hull shape	round-bilged
Keel type	long keel
Superstructure material	GRP
Rubbing strake	Bronze profile
Deck material	GRP
Deck finish	teak Refurbished in 2016
Superstructure deck finish	teak
Cockpit deck finish	teak
Dorades	3
Window frame	aluminium
Window material	tempered glass
Deckhatch	4x "Moonlight"



HALLBERG RASSY 352 SCANDINAVIA

Fuel tank (litre)	stainless steel 240 (150 + 90)
Level indicator (fuel tank)	yes
Freshwater tank (litre)	GRP 300
Level indicator (freshwater)	yes
Blackwater tank (litre)	GRP
Wheel steering	cable steering "Solimar"
Emergency tiller	yes
Extra info	Teak refurbished in 2016

ACCOMMODATION

Cabins	2
Berths	7
Interior	mahogany
Floor	carpet
Saloon	with L-shaped settee with opposite a bench
Headroom saloon (m)	1,89
Heating	diesel ducted hot air Webasto Air top 3500
Chart table	yes
Aft Cabin	yes
Galley	L-shaped
Countertop	Easy cleaned teak look plastic laminate.
Sink	stainless steel 2x
Cooker	calor gas 2 burner "Optimus"
Oven	yes
Fridge	Isothemp
Hot water system	220V + engine Boiler
Water pressure system	electrical
Manual and/or foot pump	yes
Owners cabin	double bed + single bed
Bed length (m)	2,05
Wardrobe	hanging



HALLBERG RASSY 352 SCANDINAVIA

Guest cabin 1	v-bed
Bed length (m)	2,05
Wardrobe	hanging and drawers
Bathroom	shared
Toilet	shared
Toilet system	electric
Wash basin	yes
Shower	shared

MACHINERY

No of engines	1
Make	Volvo Penta
Type	2003T
HP	43,00
kW	31,61
Fuel	diesel
Year installed	1988
Engine hours	3216
Engine cooling system	freshwater heat exchanger
Drive	shaft
Engine controls	bowden cable
Bowthruster	electric Maxpower
Gearbox	mechanical
Exhaust	watercooled
Propeller type	reversible
Propeller blades	3
Propeller shaft material	stainless steel
Shaft lubrication	water
Manual bilge pump	yes
Electric bilge pump	Jabsco
Electrical installation	12/220v



HALLBERG RASSY 352 SCANDINAVIA

Start battery	1
Service battery	1
Bowthruster battery	1
Battery monitor	Mastervolt
Battery charger	yes
Inverter	Victron 12/650
Shorepower	with cable

NAVIGATION

Compass	Suunto
Depth sounder	Raymarine Tridata ST60+
Log	Raymarine Tridata ST60+
Windset	Raymarine Wind ST60
VHF	Shipmate RS8000
Autopilot	Raymarine + handheld "Smart Controller"
Radar/GPS/plotter	Raymarine E80
Navtex	Lo-Kata Navtex 1
Wifi antenna	"Hubba"
Electronic chart(s)	Navionics (UK South -Hamburg)
Camera	Via Raymarine E80

EQUIPMENT

Fixed windscreen	With hardened glass in light alloy frames
Sprayhood	yes
Cockpit cover	yes
Cockpit cushions	yes
Cockpit table	yes
Bathing platform	yes
Boarding ladder	stainless steel
Bow ladder	yes
Anchor	yes



HALLBERG RASSY 352 SCANDINAVIA

Windlass	manual Lofrans
Deck wash	yes
Davits	stainless steel
Davits controls	manual
Sea railing	wire
Grab rail (superstructure)	teak
Pushpit	S/s
Pulpit	S/s
Life raft	container
Life raft (pers)	container 4
Last life raft survey	Needs service
Fenders	yes
Mooring lines	yes
Radio-cd player	Radio
Cockpit speakers	Need to be replaced
Speakers in salon	yes
Clock - barometer	yes
Fire extinguisher	yes

RIGGING

Rigging	sloop
Standing rigging	wire Original
Brand mast	Seldén
Material mast	aluminium
Spreaders	2
Mainsail	Original
Mainsail cover	yes
Genoa	Original
Stormjib	yes
Reefing System	quick-one-line-reefing
Backstay adjuster	mechanical Navtec



HALLBERG RASSY 352 SCANDINAVIA

Boomvang	mechanical and tackle
Genoa sheetwinches	2x Lewmar 43 ST
Multifunctional winches	1x Lewmar 16 ST
Spi-pole	aluminium



HALLBERG RASSY 352 SCANDINAVIA



HALLBERG RASSY 352 SCANDINAVIA



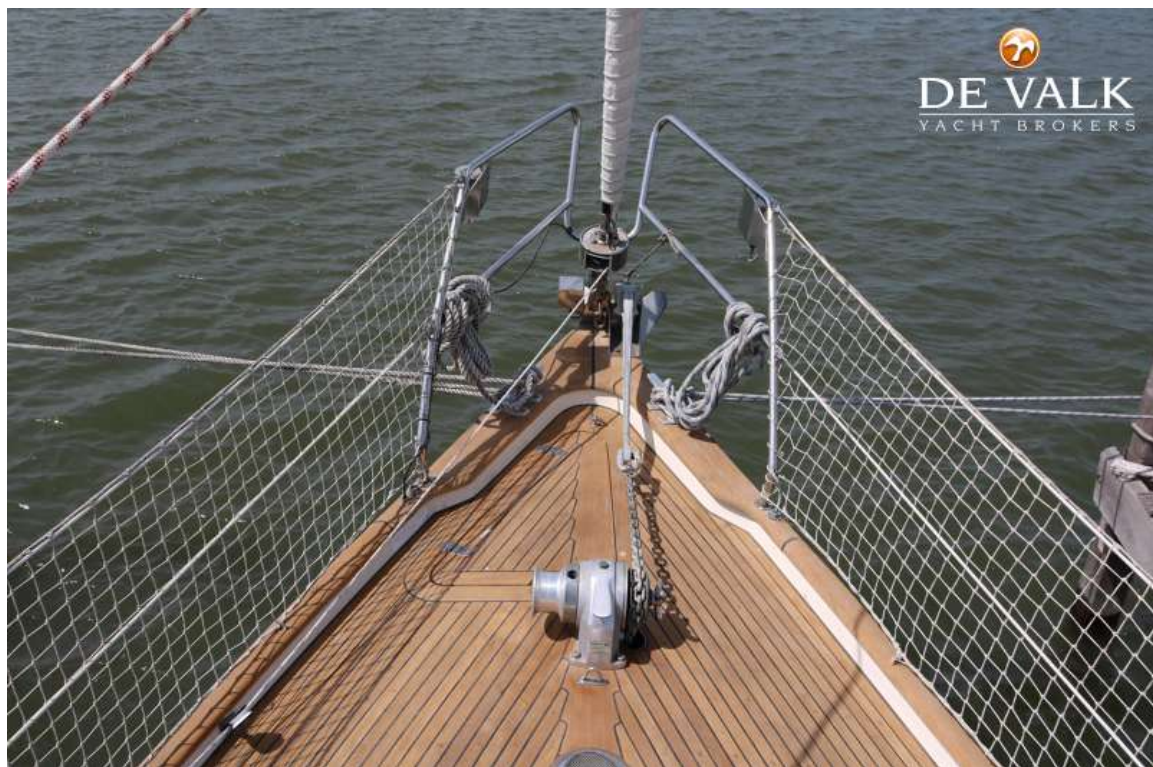
HALLBERG RASSY 352 SCANDINAVIA



HALLBERG RASSY 352 SCANDINAVIA



HALLBERG RASSY 352 SCANDINAVIA



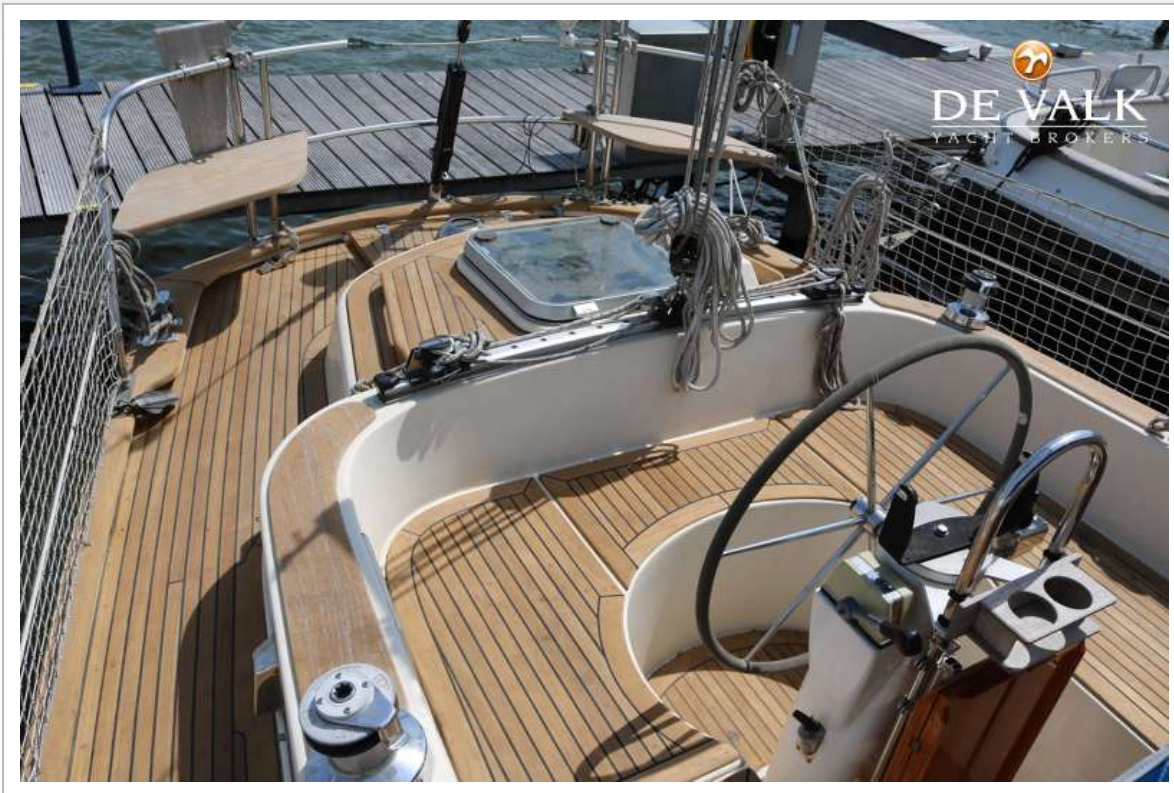
HALLBERG RASSY 352 SCANDINAVIA



HALLBERG RASSY 352 SCANDINAVIA



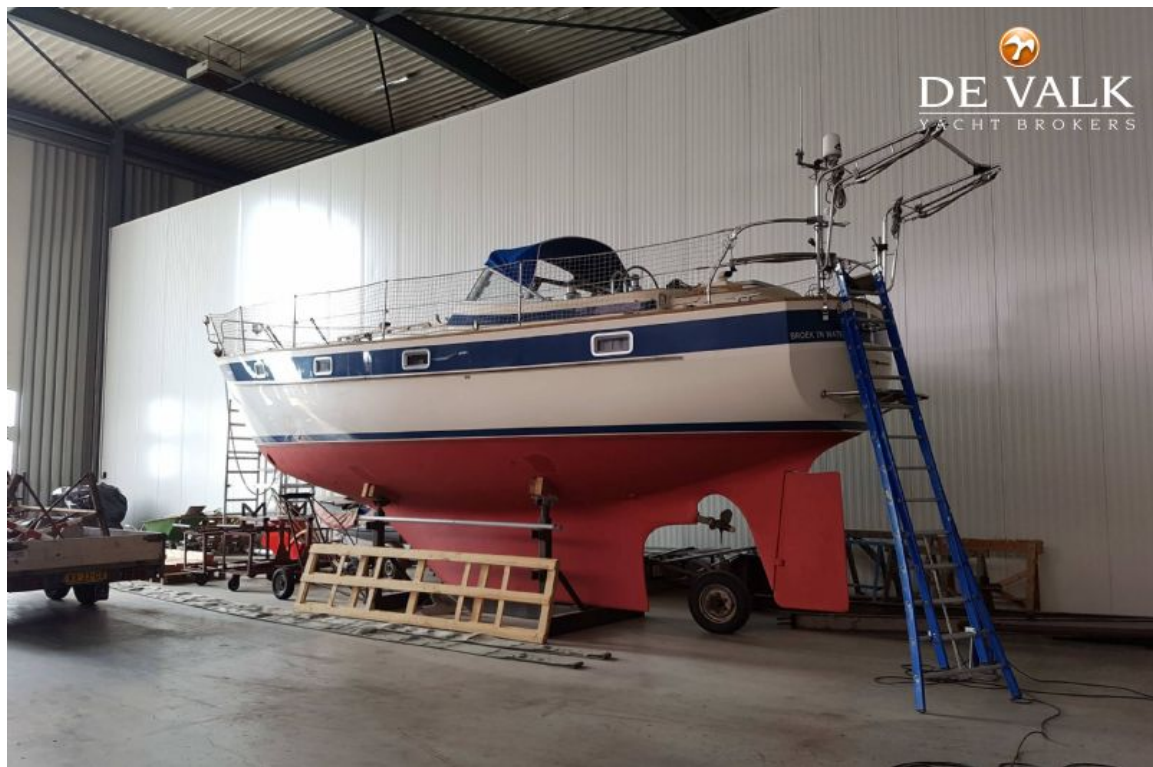
HALLBERG RASSY 352 SCANDINAVIA



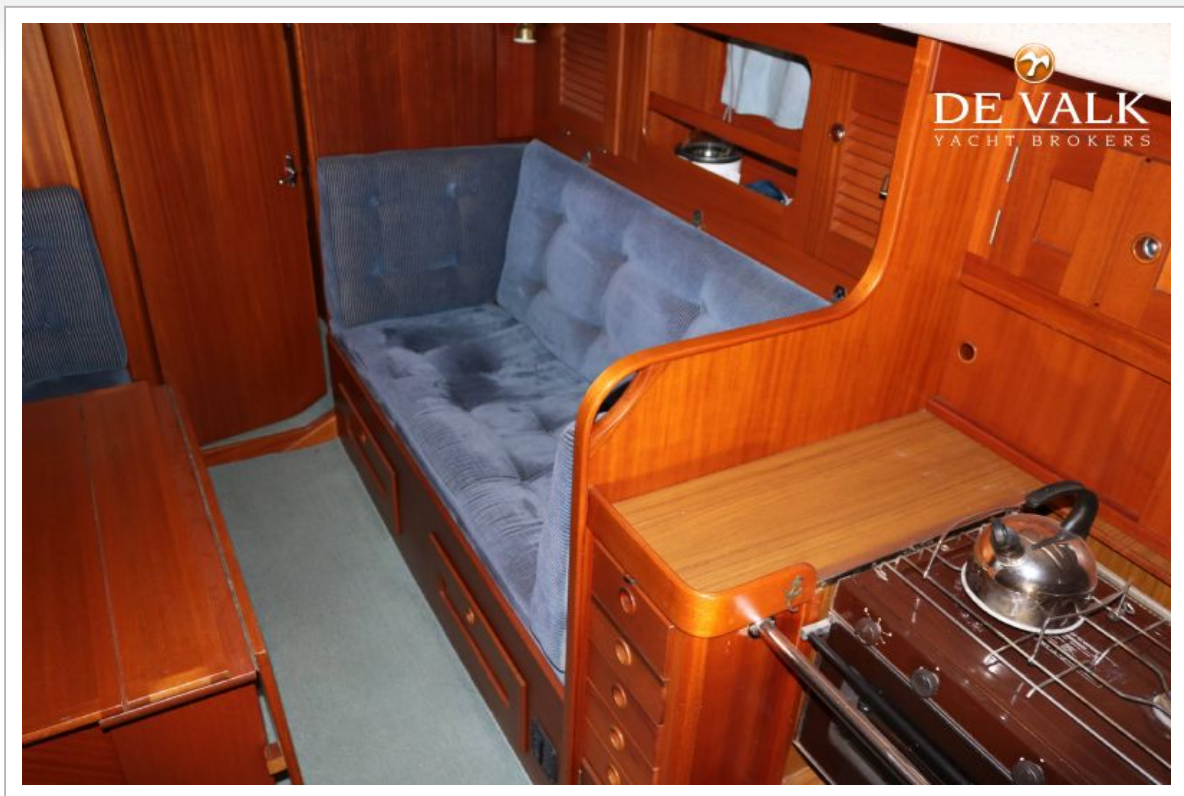
HALLBERG RASSY 352 SCANDINAVIA



HALLBERG RASSY 352 SCANDINAVIA



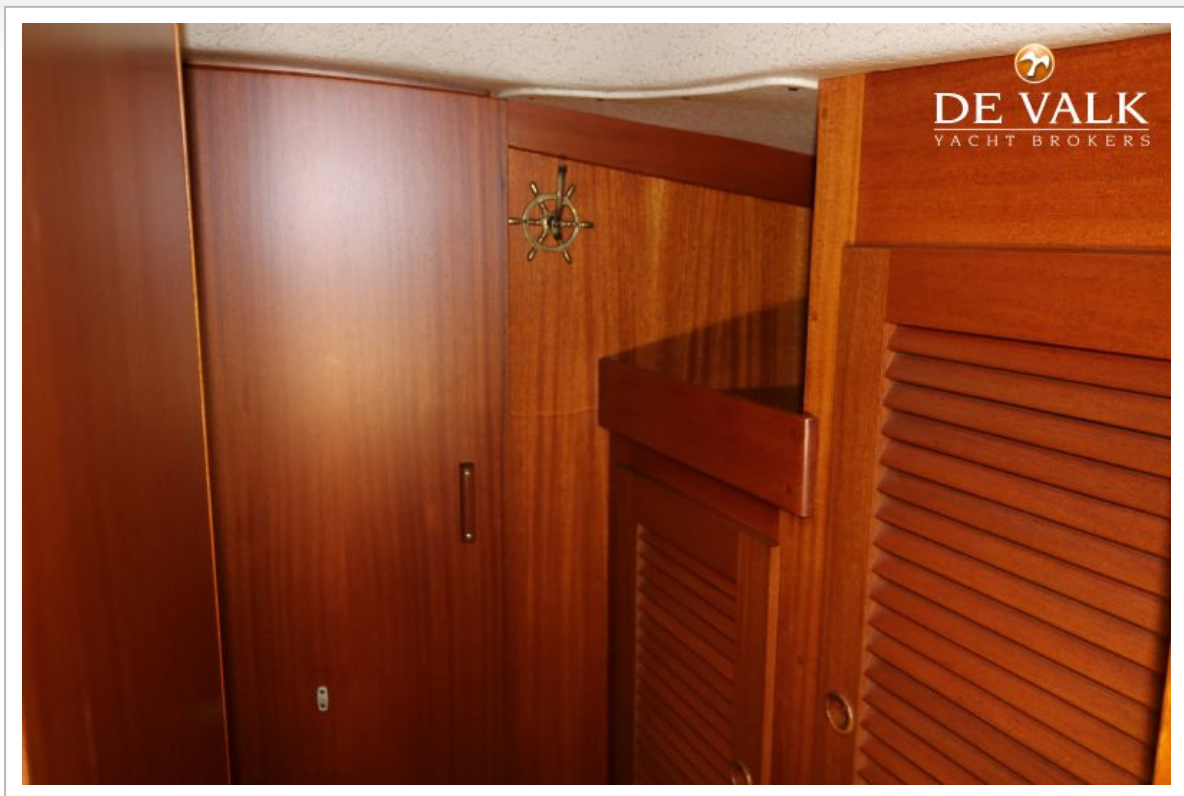
HALLBERG RASSY 352 SCANDINAVIA



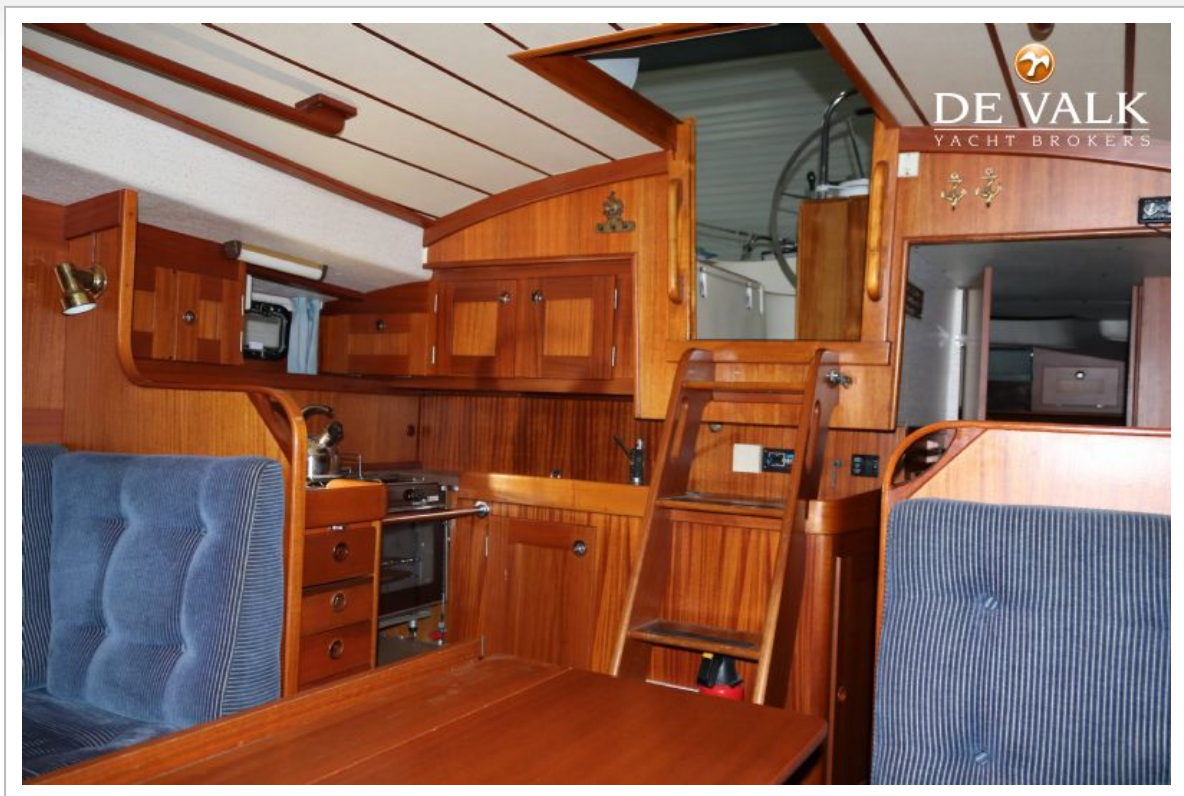
HALLBERG RASSY 352 SCANDINAVIA



HALLBERG RASSY 352 SCANDINAVIA



HALLBERG RASSY 352 SCANDINAVIA



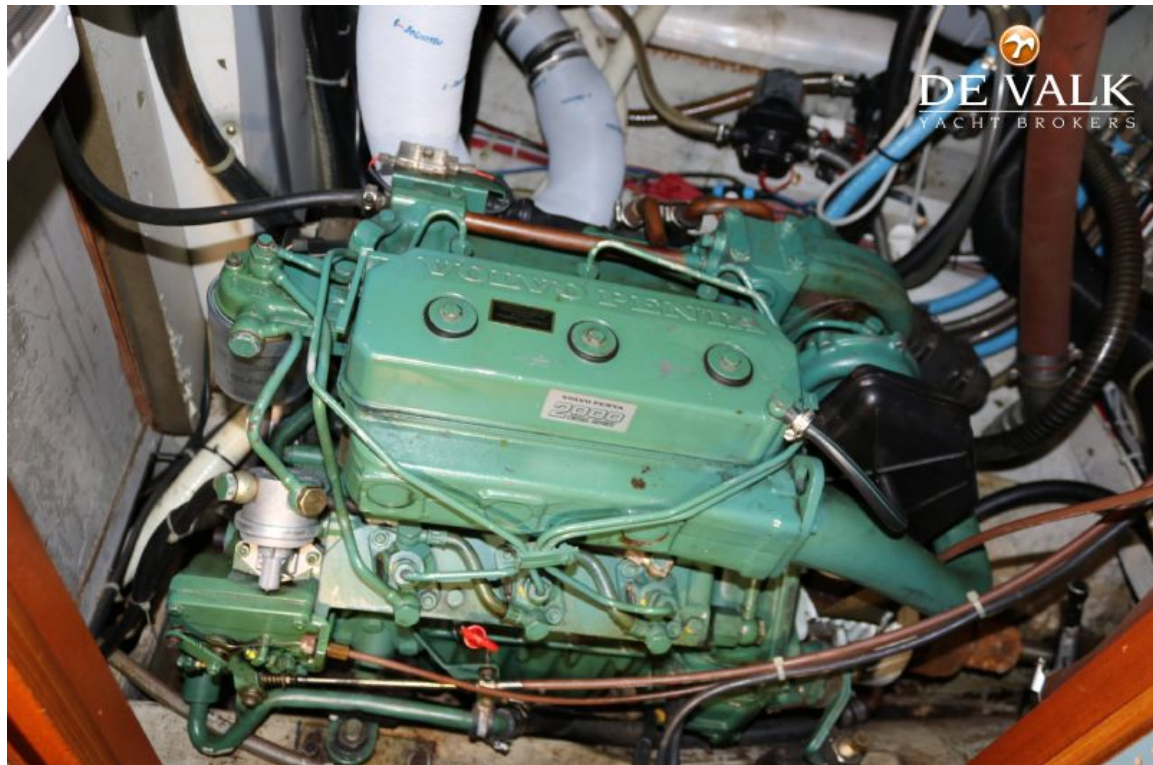
HALLBERG RASSY 352 SCANDINAVIA



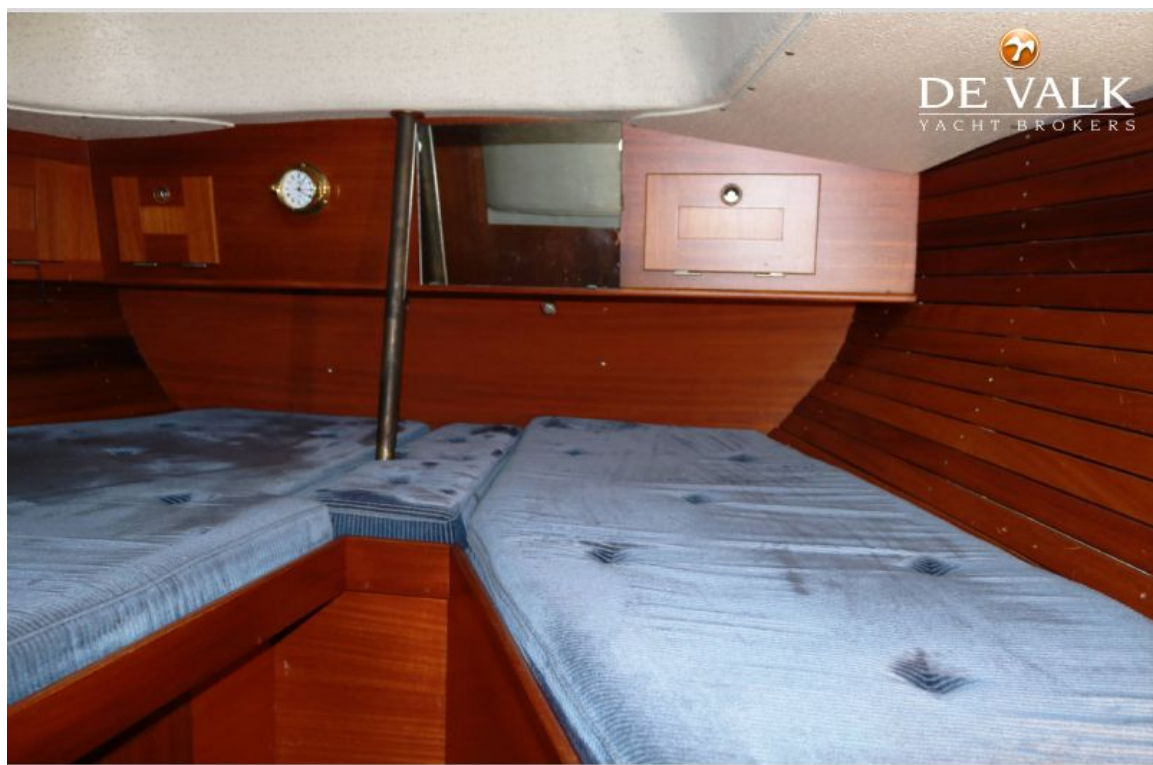
HALLBERG RASSY 352 SCANDINAVIA



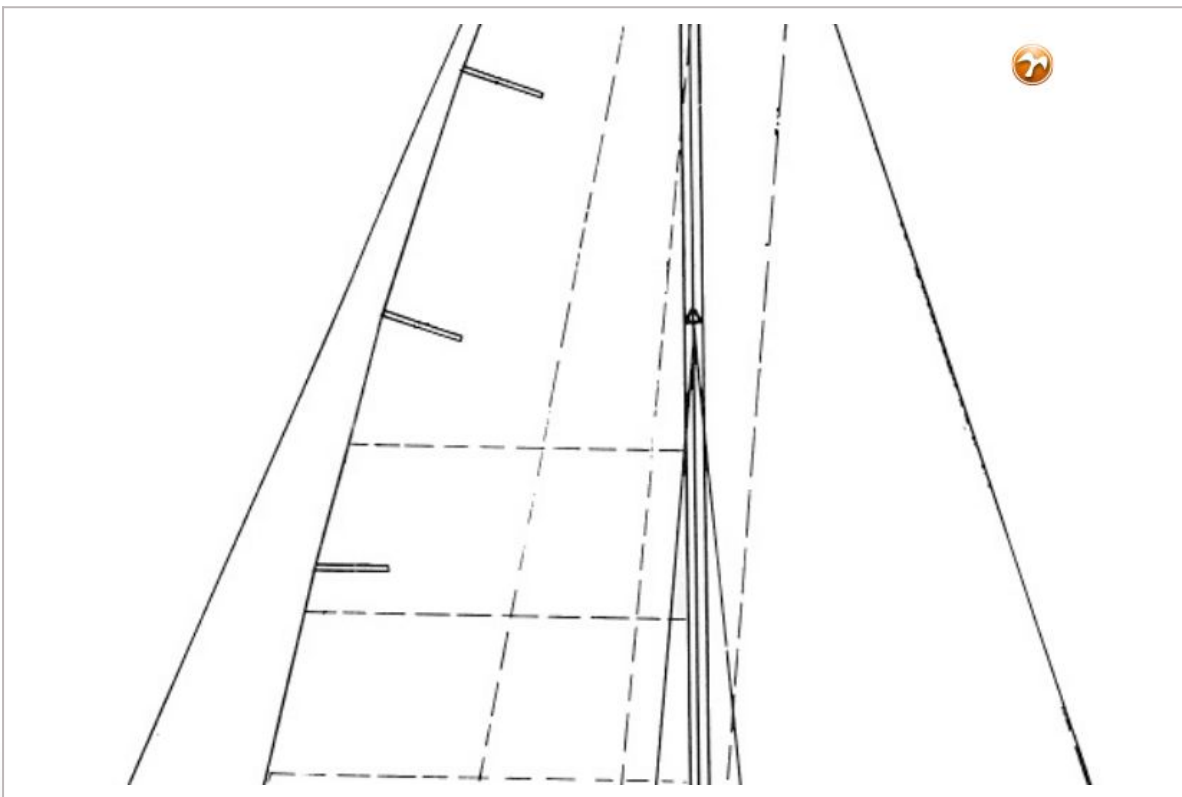
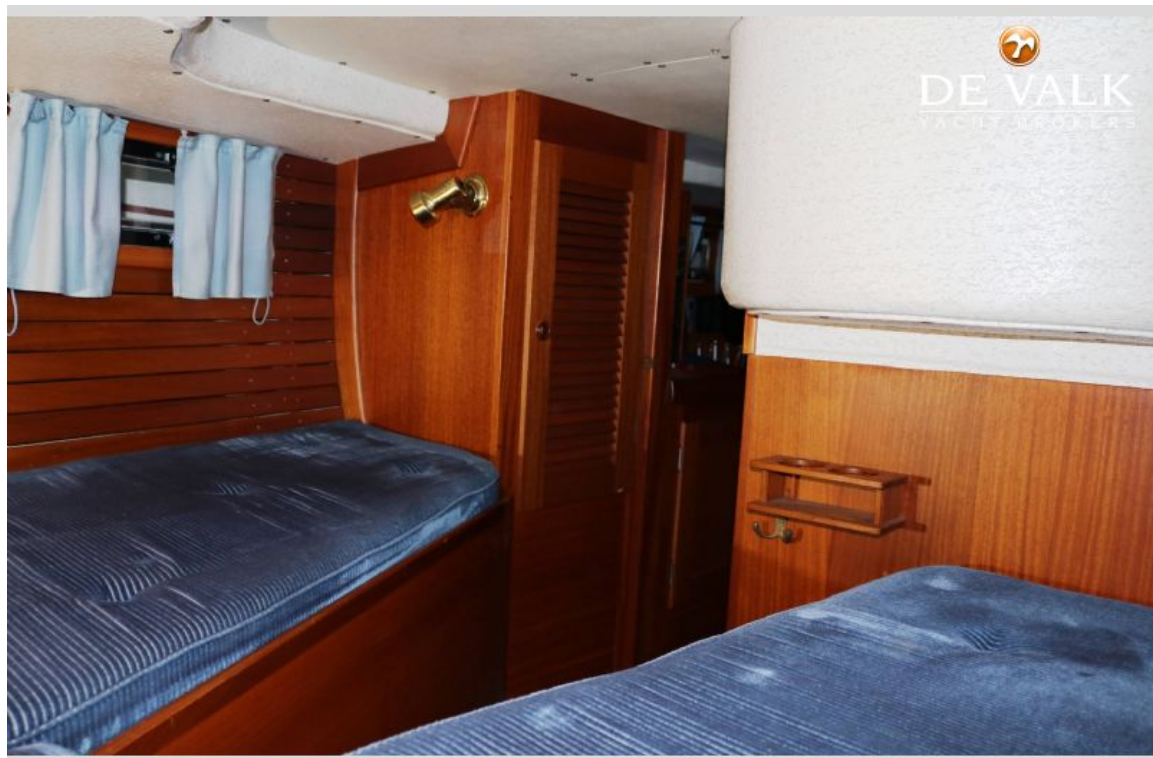
HALLBERG RASSY 352 SCANDINAVIA



HALLBERG RASSY 352 SCANDINAVIA

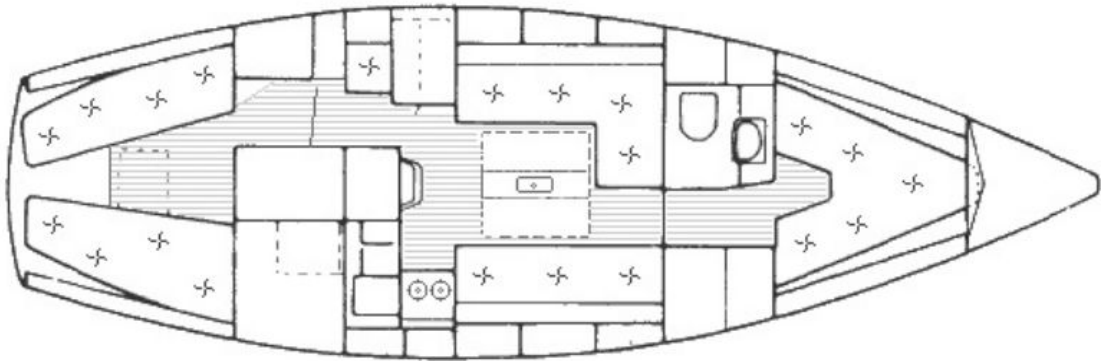


HALLBERG RASSY 352 SCANDINAVIA



HALLBERG RASSY 352 SCANDINAVIA


DE VALK
YACHT BROKERS




DE VALK
YACHT BROKERS

